



# Source details

## Pakistan Journal of Medical Sciences

Formerly known as: Specialist

[Open Access](#) ⓘ

Scopus coverage years: from 2000 to Present

Publisher: Professional Medical Publications

ISSN: 1682-024X E-ISSN: 1681-715X

Subject area: Medicine: General Medicine

Source type: Journal

CiteScore 2022

3.3



SJR 2022

0.453



SNIP 2022

0.894



[View all documents >](#)

[Set document alert](#)

[Save to source list](#) [Source Homepage](#)

[CiteScore](#) [CiteScore rank & trend](#) [Scopus content coverage](#)

### i Improved CiteScore methodology



CiteScore 2022 counts the citations received in 2019-2022 to articles, reviews, conference papers, book chapters and data papers published in 2019-2022, and divides this by the number of publications published in 2019-2022. [Learn more >](#)

CiteScore 2022

$$3.3 = \frac{4,751 \text{ Citations } 2019 - 2022}{1,445 \text{ Documents } 2019 - 2022}$$

Calculated on 05 May, 2023

CiteScoreTracker 2023 ⓘ

$$3.1 = \frac{4,001 \text{ Citations to date}}{1,293 \text{ Documents to date}}$$

Last updated on 05 May, 2023 • Updated monthly

## CiteScore rank 2022 ⓘ

Category	Rank	Percentile
Medicine		
General Medicine	#246/830	70th

[View CiteScore methodology >](#) [CiteScore FAQ >](#) [Add CiteScore to your site](#)



# Pakistan Journal of Medical Sciences

<p><b>COUNTRY</b></p> <p>Pakistan</p> <ul style="list-style-type: none"> <li>Universities and research institutions in Pakistan</li> <li>Media Ranking in Pakistan</li> </ul>	<p><b>SUBJECT AREA AND CATEGORY</b></p> <p>Medicine</p> <ul style="list-style-type: none"> <li>Medicine (miscellaneous)</li> </ul>	<p><b>PUBLISHER</b></p> <p>Professional Medical Publications</p>	<p><b>H-INDEX</b></p> <p>41</p>
<p><b>PUBLICATION TYPE</b></p> <p>Journals</p>	<p><b>ISSN</b></p> <p>1682024X, 1681715X</p>	<p><b>COVERAGE</b></p> <p>2000-2022</p>	<p><b>INFORMATION</b></p> <ul style="list-style-type: none"> <li>Homepage</li> <li>How to publish in this journal</li> <li>shaukat@pjms.org.pk</li> </ul>

### SCOPE

It is a peer reviewed medical journal published regularly since 1984. It was previously known as quarterly "SPECIALIST" till December 31st 1999. It publishes original research articles, review articles, current practices, short communications & case reports. It attracts manuscripts not only from within Pakistan but also from over fifty countries from abroad. Copies of PJMS are sent to all the import medical libraries all over Pakistan and overseas particularly in South East Asia and Asia Pacific besides WHO EMRO Region countries. Eminent members of the medical profession at home and abroad regularly contribute their write-ups, manuscripts in our publications. We pursue an independent editorial policy, which allows an opportunity to the healthcare professionals to express their views without any fear or favour. That is why many opinion makers among the medical and pharmaceutical profession use this publication to communicate their viewpoint.

Join the conversation about this journal

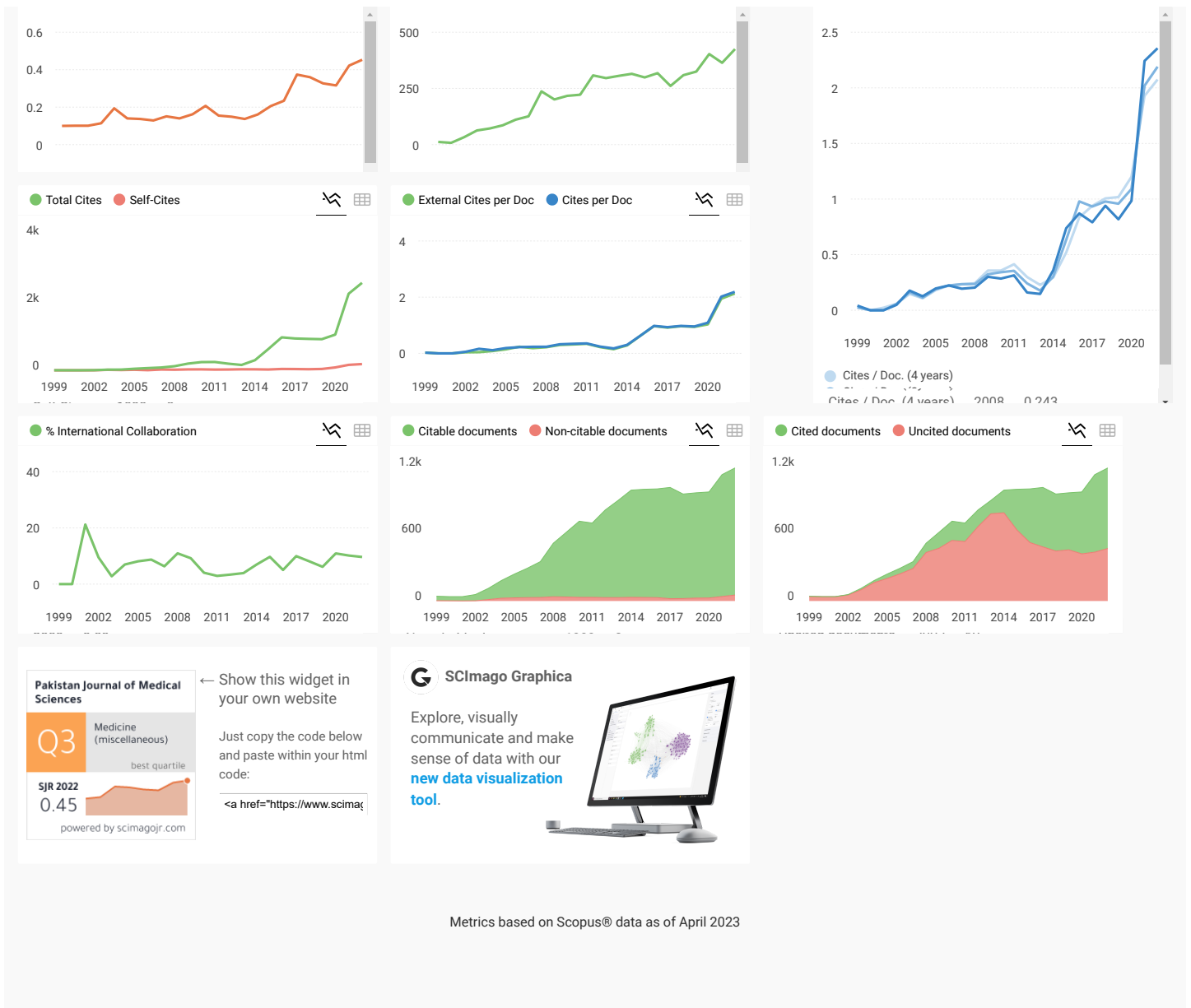
### Quartiles



### FIND SIMILAR JOURNALS

<p>1</p> <p><b>Pakistan Journal of Medical and Health Sciences</b></p> <p>PAK</p> <p>71% similarity</p>	<p>2</p> <p><b>Journal of the College of Physicians and Surgeons--</b></p> <p>PAK</p> <p>67% similarity</p>	<p>3</p> <p><b>Medical Forum Monthly</b></p> <p>CHE</p> <p>67% similarity</p>	<p>4</p> <p><b>JPMA. The Journal of the Pakistan Medical Association</b></p> <p>PAK</p> <p>65% similarity</p>	<p>5</p> <p><b>Rawal Medical Journal</b></p> <p>PAK</p> <p>6 similarity</p>
---	---	---	---	---

SJR
 Total Documents
 Citations per document



**Mohammed Ali Alnafea** 2 years ago

Greetings

I have tried several times to register but i could not and i do not know why?

← reply



**Melanie Ortiz** 2 years ago

SCImago Team

Dear Mohammed,  
 thank you for contacting us.  
 Unfortunately, we cannot help you with your request, we suggest you contact the journal's editorial staff , so they could inform you more deeply.  
 Best Regards, SCImago Team



**Hassan Ali** 3 years ago

Hi,  
 What the cost of paper publishing ?

← reply

# Pakistan Journal of Medical Sciences

Current Archives Past Issues (2013-2018) Past Issues (2002-2012) About

Advertising

Search

Home / Archives / Vol. 39 No. 1 (2023): January – February 2023

## Vol. 39 No. 1 (2023): January – February 2023



Pak J Med Sci Vol.39, No.1 2023

Published: 2022-11-12

### Editorial

Improving the quality of Peer Review and accelerating the peer review process

Shaukat Ali Jawaid



### Commentary

Writing far and beyond the Thesis by the medical community

Anam Zafar, Afifa Ehsan

 PDF

## Brief Communication

### **Development of an emergency airway response system for COVID-19 at a tertiary care hospital in resource limited country**

Faisal Shamim, Muhammad Faisal Khan, Khalid Samad, Asad Latif

 PDF

## Case Reports

### **Placenta increta in an unscarred and bicornute uterus**

Namia Nazir, Daniya Khan, Farah Deeba Nasrullah, Riffat Jaleel

 PDF

### **Eosinophilic Granulomatosis with Polyangiitis (EGPA): A case report with atypical presentation**

Khalid Mehmood, Nauman Ismat Butt, Fahmina Ashfaq, Sabeen Aftab

 PDF

### **PLA2G6-Associated Neurodegeneration: A Rare Case Report of Neurodegeneration with Brain Iron Accumulation in Children**

Nurani Widiанти, Meta Herdiana Hanindita, Nur Aisiyah Widjaja, Roedi Irawan

 PDF

## View Point

### **For the love of all that is holy, stop prescribing sodium valproate and carbamazepine together**

Wajid Jawaid

 PDF

[Make a Submission](#)

Office # 701, Seventh Floor, Business Center,  
PECHS, Shahrah-e-Faisal, Karachi-Pakistan.  
**Phones:** +92-021-34324732 & +92-021-34324733  
**Email:** pjms@pjms.org.pk

Platform &  
workflow by  
**OJS / PKP**

# Pakistan Journal of Medical Sciences

[Current](#) [Archives](#) [Past Issues \(2013-2018\)](#) [Past Issues \(2002-2012\)](#) [About](#)

Advertising

[Home](#) / [Editorial Team](#)

## Editorial Team

### Founder Chief Editor

- [Late Dr. Maqbool H Jafary \(FRCP\)](#), Pakistan

### Editorial Committee

#### Chief Editor

- [Shaukat Ali Jawaid](#), Chief Editor, Pakistan Journal of Medical Sciences, Karachi, Pakistan

#### Associate Editor

- [Prof. Shabih H Zaidi](#), United Kingdom
- [Dr. Masood Jawaid](#), Associate Editor, Pakistan Journal of Medical Sciences, Karachi, Pakistan

#### Assistant Editor

- [Prof. Dr. Anwar Ali Siddiqui](#), Former Professor, Department of Biological and Biomedical Sciences, Aga Khan University, Karachi, Pakistan
- [Dr. Syed Riazul Hasan](#), Head of Department, Department of Internal Medicine, Sindh Government Qatar Hospital, Orangi Town, Karachi, Pakistan.
- [Prof Dr. Imran Ijaz Haider](#), Professor of Psychiatry & Behavioural Sciences, Fatima Memorial Hospital, Shadman, Lahore, Pakistan.

#### International Editor Section Haematology

- [Dr. Younis Abdelwahab Skaik](#), Karl-Wiechert-Allee-15, Apartment number 133, 30625, Hannover, Germany

### **Publication Editor**

- [Mr. Mubarak Ali](#), Production Editor, Professional Medical Publications, Karachi, Pakistan

### **Bibliographer**

- [Dr. Nighat Bakhtiar](#), Dow University of Health Sciences, Karachi, Pakistan

### **Advisors / Reviewers**

- [Prof. Dr. Ata Mahmoodpoor](#), Professor of Anesthesiology, Director of ICU, Tabriz University of Medical Sciences, Tabriz, Iran, Islamic Republic Of
- [Prof. Dr. Abdul Haque](#), Rector, Akhuwat FIRST (Faisalabad Institute for Research Science and Technology), Faisalabad, Pakistan.
- [Prof. Dr. Ambreen Usmani](#), Professor & HOD-Anatomy Department, Department of Anatomy & Medical Education, Bahria University Medical and Dental College, Near PNS Shifa, Karachi, Pakistan
- [Prof. Dr. Anjum Jalal](#), Professor of Cardiac Surgery and Executive Director, Rawalpindi Institute of Cardiology, Rawalpindi, Pakistan
- [Dr. Ahmed Badar](#), Associate Professor, Department of Physiology, College of Medicine, Dammam University, Dammam, Saudi Arabia
- [Prof. Dr Amjad Hussain Wyne](#), Head, Pediatric Dentistry Department, CMH Lahore Medical College, Lahore, Pakistan
- [Prof. Bader Faiyaz Zuberi](#), Dow University of Health Sciences, Karachi, Pakistan
- [Prof. Dr. Bobby Joseph](#), Professor and Head, Community Health, St. John's Medical College, Bangalore, India
- [Prof. Ejaz Ahmed Vohra](#), Professor & Chairperson, Department of General Medicine, Ziauddin University, Karachi, Pakistan
- [Prof. Dr. Faisal Nazeer Hussain](#), Professor, Department of Orthopedics, Avicenna Medical College, Lahore, Pakistan
- [Dr. Faraz Shafiq](#), Associate Professor, Department of Anaesthesiology, Aga Khan University, Karachi, Pakistan
- [Dr. Fahim Vohra](#), Associate Professor, Prosthodontics, Department of Prosthetic Dental Sciences, College of Dentistry, King Saud University, Riyadh, Saudi Arabia
- [Dr. Farrokh Habibzadeh](#), Chief Editor, The International Journal of Occupational and Environmental Medicine, The IJOEM Editorial Office, Shiraz NIOC Polyclinics, Eram Blvd, Shiraz, Iran, Islamic Republic Of



- [Prof. H.R Ahmad](#), Department of Biological and Biomedical Sciences, Aga Khan University, Karachi, Pakistan
- [Prof. Dr. Humaira Zafar](#), Professor of Pathology, Al Nafees Medical College & Hospital, Islamabad, Pakistan
- [Dr. Iftikhar A Jan](#), Consultant & Chief of Pediatric Surgery, Mafraq Hospital, Abu Dhabi UAE, United Arab Emirates
- [Dr. Imtiaz Khalid](#), Assistant Professor, Department of Medicine, Ziauddin University, Karachi, Pakistan
- [Prof. Dr. Jose Florencio F. Lapena JR](#), Professor, Department of Otorhinolaryngology, Ward 10, Philippine General Hospital, University of the Philippines Manila, Taft Avenue, Ermita Manila 1000, Philippines
- [Prof. Dr. Jahan Ara Ainuddin](#), Professor, Department of Gynae / Obstetrics, Dow Medical College, Dow University of Health and Sciences, Karachi, Pakistan
- [Prof. Dr. Md Abdus Salam](#), Department of Basic Medical Sciences, Faculty (Kulliyah) of Medicine, International Islamic University Malaysia (IIUM), Kuantan, Pahang, Malaysia.
- [Prof. Mohammad Perwaiz Iqbal](#), (Former Professor of Biochemistry, Aga Khan University, Karachi), Lahore, Pakistan
- [Prof. Mohammad Akbar Chaudhry](#), Principle & Professor of Medicine, Azra Naheed Medical College Lahore, Pakistan
- [Dr. Musarrat Riaz](#), Associate Professor, Department of Medicine, Baqai Institute of Diabetology and Endocrinology, Baqai Medical University, Karachi, Pakistan
- [Dr. M. Afzal Javed](#), Consultant Psychiatrist, The Medical Centre, Manor Court Avenue, Nuneaton, CV11 5HX, United Kingdom
- [Prof. Dr. Mohammad Bagher Rokni](#), Professor, Department of Medical Parasitology & Mycology, School of Public Health, Tehran University of Medical Sciences, Tehran, Iran, Islamic Republic Of
- [Dr. Muhammad Waqar Azeem](#), Chair of the Department of Psychiatry, Sidra Medical & Research Center, Doha, Qatar
- [Prof. Dr. Mukhtiar Baig](#), Professor of Clinical Biochemistry & Head of Assessment Unit, Faculty of Medicine, Rabigh, King Abdulaziz University, Jeddah, Saudi Arabia
- [Prof. Dr. Nasir Khokhar](#), Professor and Chairman, Department of Medicine, Director, Division of Gastroenterology, Shifa International Hospital, Islamabad, Pakistan
- [Prof. Dr. Nazli Hossain](#), Professor, Department of Obstetrics & Gynecology, Dow University of Health Sciences, Karachi, Pakistan
- [Dr. Noor-i-Kiran Haris](#), Medical Education Consultant, Virtual Learning Facilitator, Subfertility Consultant, Australian Concept Infertility Centre, Faisalabad, Pakistan
- [Dr. Sahrai Saeed](#), Consultant Cardiologist, Department of Heart Disease, Haukeland University Hospital, Bergen, Norway

- [Prof. Dr. Sajid Malik](#), Professor, Department of Animal Sciences, Quaid-i-Azam University, Islamabad, Pakistan
- [Prof. Dr. Sameen Afzal Junejo](#), Chairman and Professor, Department of Ophthalmology, Liaquat University of Medical & Health Sciences (LUMHS), Hyderabad, Pakistan
- [Prof. Dr. Stephen Onwere](#), Department of Obstetrics & Gynaecology, College of Medicine, Abia State University Teaching Hospital, PMB 7004, Aba, Abia State, Nigeria
- [Prof. Shaikh Qamaruddin Nizami](#), Professor, Department of Paediatrics, The Aga Khan University and Hospital, Karachi, Pakistan
- [Prof. Tahereh Changiz](#), Professor of Medical Education, Educational Development Centre, Isfahan University of Medical Sciences, Isfahan, Iran
- [Prof. Dr. Waris Qidwai](#), Chairman and Professor, Family Medicine Department, The Aga Khan University, Karachi, Pakistan
- [Dr. Wajid Jawaid](#), Senior Registrar Neurology, Department of Neurology, Dow Medical College & Dr. Ruth K.M Pfau Civil Hospital, Karachi, Pakistan
- [Dr. Younis Abdelwahab Skaik](#), Karl-Wiechert-Allee-15, Apartment number 133, 30625, Hannover, Germany

[Make a Submission](#)

**Pak J Med Sci  
at PubMed Central**



## PLA2G6-Associated Neurodegeneration: A Rare Case Report of Neurodegeneration with Brain Iron Accumulation in Children

Nurani Widiati<sup>1</sup>, Meta Herdiana Hanindita<sup>2</sup>,  
Nur Aisiyah Widjaja<sup>3</sup>, Roedi Irawan<sup>4</sup>

### SUMMARY

This report aimed to describe and review the clinical features, neuroimaging findings, and PLA2G6 mutations identified in a 34-month-old girl with regression of developmental milestones.

A 34 months old girl came to Dr. Soetomo Hospital's outpatient clinic, Surabaya, with a developmental regression for six months, and got worse until she could not do any activity and was followed by recurrent seizures. She had a sibling who had similar problems and symptoms and then died at five years of age. The head MRI revealed brain atrophy, the possibility of an early sign of metabolic disorder, and a white matter lesion at the globus pallidus bilateral that supports the encephalopathy metabolic view. The genetic test revealed a positive homozygous such as a pathogenic variant in the PLA2G6 gene, which confirmed the diagnosis. PLA2G6-Associated with Neurodegeneration (PLAN) should be considered as a diagnosis in children with developmental regression.

**KEYWORDS:** Developmental regression, NBIA, PLAN, Inherited metabolic diseases.

doi: <https://doi.org/10.12669/pjms.39.1.6801>

**How to cite this:** Widiati N, Hanindita MH, Widjaja NA, Irawan R. PLA2G6-Associated Neurodegeneration: A Rare Case Report of Neurodegeneration with Brain Iron Accumulation in Children. *Pak J Med Sci.* 2023;39(1):310-313. doi: <https://doi.org/10.12669/pjms.39.1.6801>

This is an Open Access article distributed under the terms of the Creative Commons Attribution License (<http://creativecommons.org/licenses/by/3.0>), which permits unrestricted use, distribution, and reproduction in any medium, provided the original work is properly cited.

### INTRODUCTION

Over the past two decades, nearly all Neurodegeneration with Brain Iron Accumulation (NBIA) disorders have been elucidated, particularly with a focus on the basal ganglia and globus pallidus.<sup>1</sup> NBIA is a set of life-threatening rare monogenic diseases characterized by focal iron accumulation in the brain, with a prevalence of less than 1/1,000,000 in the general population and considered a "rare" disease.<sup>2</sup> NBIA is divided into four types: pantothenate kinase-associated

neurodegeneration (PKAN); phospholipase A2-associated neurodegeneration (PLAN); mitochondrial membrane protein-associated neurodegeneration (MPAN); and beta-propeller protein-associated neurodegeneration (BPAN). Each type gives a different presentation and prognosis.<sup>2</sup>

The present paper reports a case of NBIA PLAN type in a 34-month-old girl. To the best of our knowledge, this is the first reported case of neurodegeneration with brain iron accumulation in Indonesia. The purpose of this case report was to report and review the disease. This report emphasizes the importance of correct diagnosis for a rare case of neurodegeneration with brain iron accumulation in a child, thus we can monitor the patient better, reduce the mortality rate, improve the patient's quality of life and estimate their prognosis better.

### CASE PRESENTATION

A 34-month-old girl came to Dr. Soetomo Hospital's outpatient clinic, Surabaya, on 14 June 2021, with a chief complaint of developmental regression since she was eighteen months old. The problems worsened until she could not do any activity when she was 24 months old. She experienced recurring seizures without fever twice a month.

Her four-years-older-sibling died at the age of five after showing similar signs and symptoms. The patient was delivered by C-section at 38 weeks of gestational

1. Nurani Widiati,
  2. Meta Herdiana Hanindita,
  3. Nur Aisiyah Widjaja,
  4. Roedi Irawan,
- 1-4: Department of Child Health, Faculty of Medicine, Universitas Airlangga, Dr. Soetomo General Hospital, Surabaya, Indonesia.

Correspondence:

Nur Aisiyah Widjaja, MD.  
Department of Child Health,  
Faculty of Medicine, Universitas Airlangga,  
Dr. Soetomo General Hospital,  
Surabaya Mayjen Prof. Dr. Moestopo No. 6-8,  
Surabaya, Indonesia.  
Email: [nuraisyahwidjaja@gmail.com](mailto:nuraisyahwidjaja@gmail.com)

- \* Received for Publication: June 27 2022
- \* Revision Received: November 10, 2022
- \* Revision Accepted: November 15, 2022

age, and the indication of breech presentation with birth weight, length, and head circumference were 2900 grams, 47 cm, and 32 cm, respectively. The patient had completed the basic immunization. According to her nutritional history, the mother breastfed her until she was 18 months old, continued with the formula milk via spoon until 32 months old, and then enteral from 33 months old until now.

She could smile at two months old, prone at four months old, babble at six months old, say "mama" specifically, and clap hands at nine months old. At nine months old, she could not sit down, head up, prone herself, or reach toys. At 18 months old, her babbling was decrement, and she fell while sitting, prone rarely but still could head up and reach a toy. At 24 months old, she could not head up, inability to be prone by herself, could not reach toys, there was no babbling but still could cry, and her eyes still could follow a motion. The upper extremities could move flexion, and the lower extremities could move laterally. Furthermore, day by day, she could only cry softly.

The vital sign and physical examination showed no remarkable findings. A BCG scar was found on the right arm. Her neurological status revealed apathy, isochoric pupils of 3mm/3mm, positive light reflex, and no sign of meningeal irritation. Physiological reflex decreased +1 for all extremities and no pathological reflex. The motor examination resulted in +1 for all extremities and flaccid muscle tone.

The laboratory finding revealed that Hb 11.6 g/dl, Hct 35.8 g/dl, MCV 71.6 fL, MCH 23.2 pg, MCHC 32.4 g/dL, leucocyte 9290 uL, thrombocyte 532000 uL, erythrocyte 5000000 uL, Ca 9.6 mg/dL, sodium 137.2 mmol/L, potassium 3.81 mmol/L, chloride 105.7 mmol/L, pH

7.42, pCO<sub>2</sub> 23.4 mmHg, pO<sub>2</sub> 79 mmHg, SO<sub>2</sub> 96%, BE -9 mmol/L, T 37.5C, and lactic acid 4.7 mmol/L, and ammonia 62.2 mmol/L.

The amino profile-19 examination showed a decrement in aspartic acid (ASP) and an increment in glutamic acid (GLU). The first head MRI on December 2019 revealed slight brain atrophy, which had the possibility of an early sign of a metabolic disorder of the brain. At this time, there are no pathognomonic signs of metabolic disease in the brain parenchymal yet. The second head MRI was performed one year later and revealed a white matter lesion at globus pallidus bilateral that supports the encephalopathy metabolic view (new lesion), subdural fluid collection on bilateral frontal regions, focal brain atrophy fronto-temporo-parietal bilateral lobe, cerebellum, and brain stem (increasing process), and microcephalic with brachycephalic skull type. (Fig.1).

The electroencephalography on December 2nd 2020 showed abnormal EEG III, spike-wave in the left mid-temporal, and excessive beta activity. The impression of abnormal EEG during recording indicated an epileptogenic potential in the left mid-temporal region.

A genetic test was performed on April 1st 2021. The interpretation was that a homozygous possible pathogenic variant was identified in the PLA2G6 gene. She was diagnosed with Neurodegeneration with Brain Iron Accumulation (NBIA): PLA2G6-Associated Neurodegeneration (PLAN) type. Symptomatic treatment was administered to the patient. Informed consent for the publication of clinical data has been obtained from this patient.

## DISCUSSION

In this case, a 34 months old girl came with a chief complaint of developmental regression. Careful and

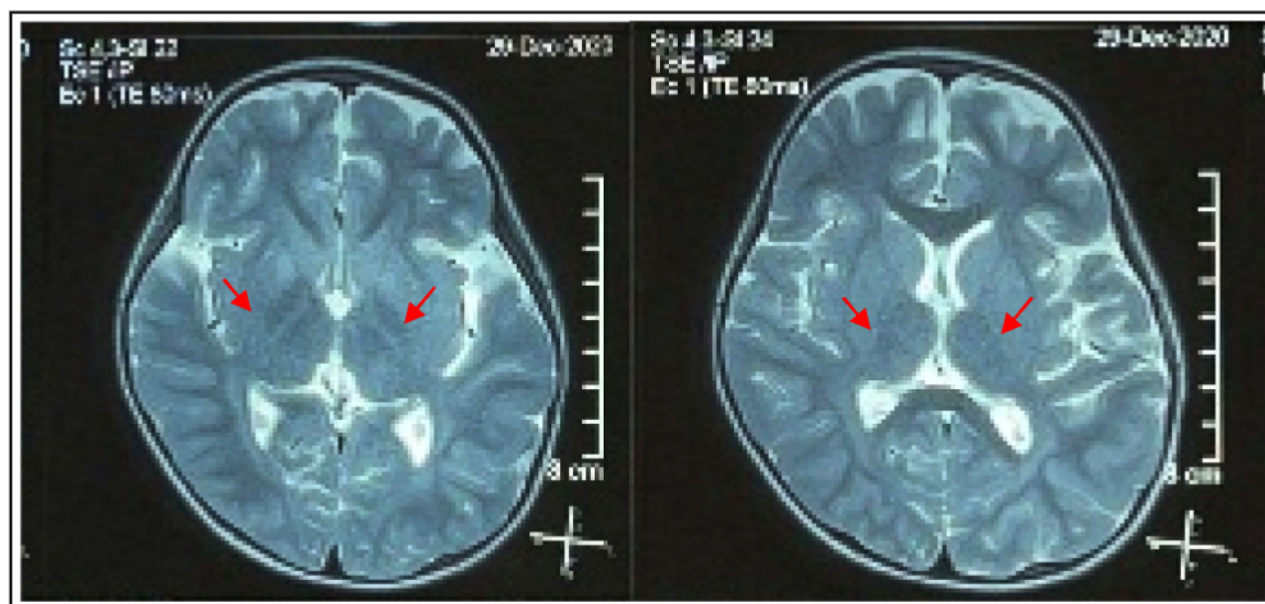


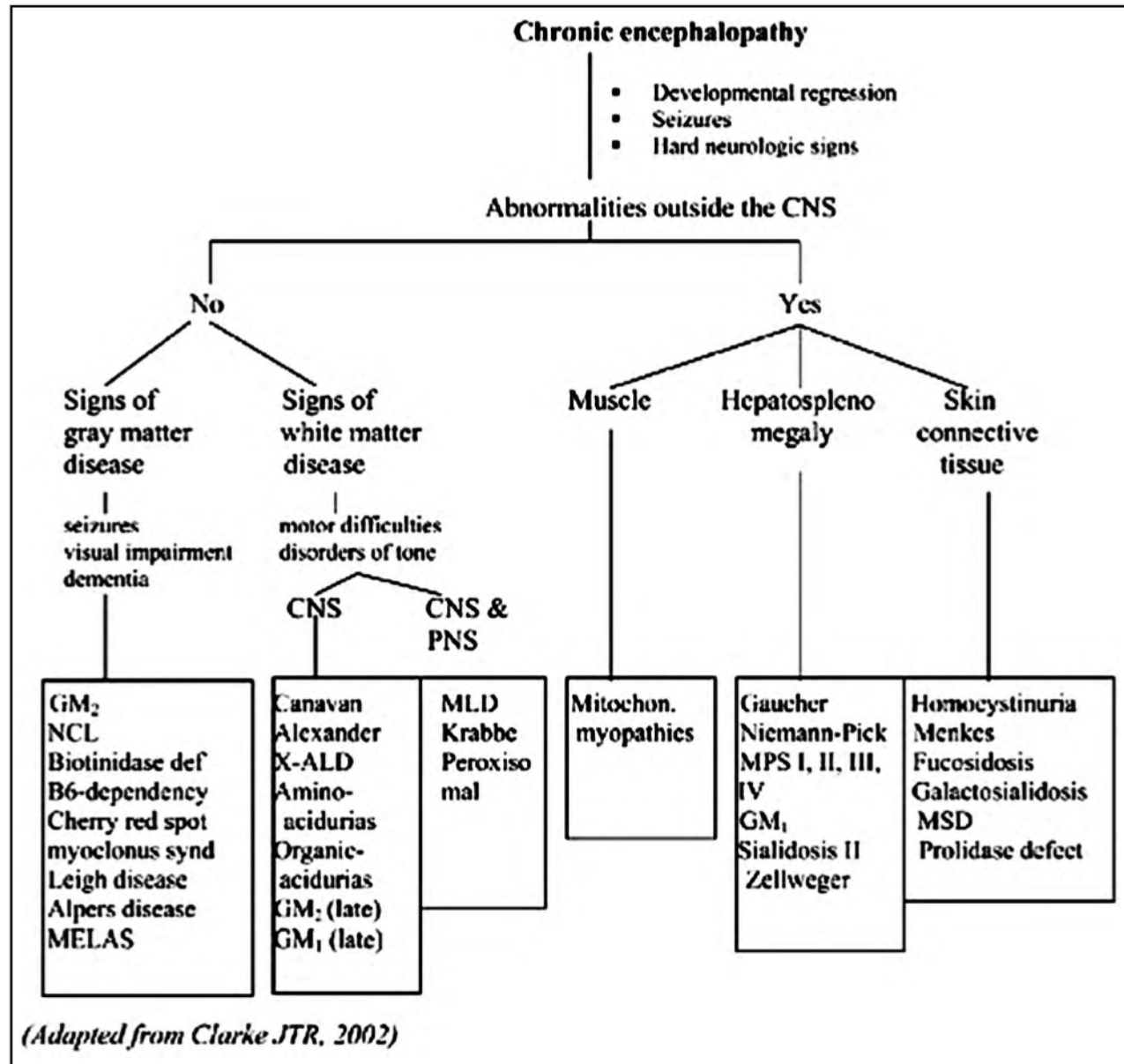
Fig.1: The second head MRI showed a white matter lesion at globus pallidus bilateral that supports the encephalopathy metabolic view (new lesion), subdural fluid collection on bilateral frontal regions, focal brain atrophy fronto-temporo-parietal bilateral lobe, cerebellum, and brain stem (increasing process), and microcephalic with brachycephalic skull type.



comprehensive clinical assessment, imaging studies, electrophysiologic investigation, and histopathologic and ultrastructural information from selected biopsies help establish the distribution and type of abnormalities within the nerve system. Retinitis pigmentosa, hepatocellular dysfunction, and renal tubular dysfunction in a child with psychomotor retardation, muscle weakness, and seizures strongly suggest the possibility of a mitochondrial defect. While hepatosplenomegaly without significant hepatocellular dysfunction in a child with slowly progressive psychomotor retardation and ataxia without seizure may suggest lysosomal storage

diseases.<sup>3</sup> Neurologic symptoms such as global cognitive disabilities, developmental delay, loss of previously acquired skills, or psychomotor retardation are the presenting and most major clinical problems associated with many inherited metabolic disorders.<sup>3</sup> (Fig.2)

Our patient had a sibling who died at five years old with similar signs and symptoms. Most mutations cause diseases transmitted as autosomal recessive disorders.<sup>3</sup> Seven of the ten genetically defined types of NBIA are inherited autosomal recessive, except neuroferritinopathy, mitochondrial membrane protein-associated neurodegeneration (MPAN), and beta-



propeller protein-associated neurodegeneration (BPAN).<sup>4</sup> NBIA diagnosis is based on a genetic test. A biochemical test is performed to rule out a differential diagnosis, while an MRI is performed as an additional examination to confirm the diagnosis.

Patients with a movement disorder, extrapyramidal features, or developmental regression were recommended, including iron-sensitive sequences in diagnostic MRI studies of the brain, although iron, resembling the eye of the tiger sign, might be visible only later in the disease course.<sup>4</sup> The appearance of specific MRI patterns depends on the stage of the disease and the patient's age at evaluation.<sup>5</sup> In all PLAN forms, iron accumulation might be absent or subtle early in the disease course.

Optic atrophy can be seen in up to 85% of patients with PLA2G6 mutation.<sup>2</sup> A case series from India present a girl with rotatory and horizontal nystagmus with optic disc atrophy in both eyes and a boy with nystagmus with bilateral disc pallor.<sup>6</sup> Another study in 2021 presented a girl with bilateral optic nerve atrophy (without retinal hyperpigmentation).<sup>7</sup> An abnormal iron deposition follows a specific pattern of almost symmetrical involvement of the deep grey matter nuclei of the brain in NBIA.<sup>8</sup> Neurodegeneration with brain iron accumulation (NBIA) encompasses a group of inherited disorders that share the clinical features of an extrapyramidal movement disorder accompanied by varying degrees of intellectual disability and abnormal iron deposition in the basal ganglia (e.g., globus pallidus mainly).<sup>2</sup> A case study from Hungary showed the development of severe spastic paraparesis with moderate ataxia in two girls diagnosed with PLAN.<sup>7</sup>

Mutations in the calcium-independent phospholipase A2 gene *PLA2G6*, which plays a critical role in cell membrane phospholipid homeostasis, are responsible for PLAN. To date, all defective proteins in the NBIA disorders are known or suspected to be essential for mitochondrial function, but only two have a known role in iron homeostasis: ferritin light chain and ceruloplasmin.<sup>1</sup>

As whole-exome sequencing emerged, many cases of PLAN have been recognized.<sup>1</sup> Iron is an essential element for many brain functions<sup>9</sup>, particularly for myelination. However, high amounts of iron cause neural damage due to the ability of labile forms of iron to induce oxidative stress and provide a variety of neurodegenerative diseases.<sup>10</sup> NBIA involves several genetic disorders caused by mutations in genes directly involved in an iron metabolic pathway.<sup>9</sup> The four most common NBIA disorders include PKAN due to mutations in *PANK2*, phospholipase A2-associated neurodegeneration caused by a mutation in *PLA2G6*, mitochondrial membrane protein-associated neurodegeneration from mutations in *C19orf12*, and beta-propeller protein-associated neurodegeneration due to mutations in *WDR45*.<sup>1</sup>

Childhood-onset PLAN encompasses a more slowly progressive psychomotor disorder that is clinically distinct from the infantile and adult-onset PLAN forms. These children may initially be diagnosed with autism, eventually developing motor features; most have some degree of intellectual disability.<sup>1</sup> Movement disorders

may be alleviated using anticholinergics, tetrabenazine, and baclofen dopaminergic drugs. Surgical procedures, thalamotomy, pallidotomy, or deep brain stimulation might be beneficial in about 30% (for review of reported cases).<sup>11</sup> When the individual could no longer maintain an adequate diet orally, gastrostomy tube placement is indicated to prevent aspiration pneumonia.<sup>4</sup>

The possibility of chelating iron accumulated in specific brain regions remains an open question,<sup>10</sup> but there are three reports on chelating treatment in idiopathic NBIA patients with clinical benefit, thus unknown diagnosis may not necessarily prevent initiation of chelating treatment.<sup>10,12</sup> It is appropriate to offer genetic counselling (including discussion of potential risks to offspring and reproductive options) to young adults who are affected, are heterozygous, or are at risk of being heterozygous. When the NBIA-causing pathogenic variant(s) have been identified in an affected family member, prenatal testing for a pregnancy at increased risk is highly recommended.<sup>4</sup>

NBIA is a very rare case and it is very challenging to make the diagnosis. However, it is important to make a diagnosis as early as possible so that patients can get treated and monitored better (especially in ferritin levels as an iron deposition). This condition will also reduce the mortality rate, improve quality of life, and help us to estimate their prognosis better.

**Acknowledgement:** We wish to thank our staff in the Pediatric Ward, the doctors, nurses, and the administrator for granting us permission and necessary support to conduct our research.

**Disclosure:** The authors declare that (s) he has no relevant or material financial interests that relate to the research described in this paper. The authors declare no conflict of interest.

## REFERENCES

- Hayflick SJ, Kurian MA, Hogarth P. Neurodegeneration with brain iron accumulation. *Handb Clin Neurol*. 2018;147:293-305. doi: 10.1016/B978-0-444-63233-3.00019-1.
- Hogarth P. Neurodegeneration with Brain Iron Accumulation: Diagnosis and Management. *J Mov Disord*. 2015;8:1-13.
- Clarke JTR. *A Clinical Guide to Inherited Metabolic Diseases*. Cambridge University Press: Cambridge, 2005. doi: 10.1017/CBO9780511544682
- Gregory A, Hayflick S. Neurodegeneration with Brain Iron Accumulation Disorders Overview. 1993.
- Lee J-H, Yun JY, Gregory A, Hogarth P, Hayflick SJ. Brain MRI Pattern Recognition in Neurodegeneration With Brain Iron Accumulation. *Front Neurol*. 2020;11. doi: 10.3389/fneur.2020.01024
- Kulkarni SD, Garg M, Sayed R, Patil VA. Two unusual cases of PLA2G6-associated neurodegeneration from India. *Ann Indian Acad Neurol*. 2016;19:115.
- Toth-Bencsik R, Balicza P, Varga ET, Lengyel A, Rudas G, Gal A, et al. New Insights of Phospholipase A2 Associated Neurodegeneration Phenotype Based on the Long-Term Follow-Up of a Large Hungarian Family. *Front Genet*. 2021;12. doi:10.3389/FGENE.2021.628904
- Lehéricy S, Roze E, Goizet C, Mochel F. MRI of neurodegeneration with brain iron accumulation. *Curr Opin Neurol*. 2020;33:462-473.
- Dusek P, Jankovic J, Le W. Iron dysregulation in movement disorders. *Neurobiol Dis*. 2012;46:1-18.
- Abbruzzese G, Cossu G, Balocco M, Marchese R, Murgia D, Melis M, et al. A pilot trial of deferiprone for neurodegeneration with brain iron accumulation. *Haematologica*. 2011;96:1708-1711.
- Schneider SA. Neurodegeneration with Brain Iron Accumulation. *Curr Neurol Neurosci Rep*. 2016;16:9.
- Kwiatkowski A, Rycckewaert G, Jissendi Tchofo P, Moreau C, Vuillaume J, et al. Long-term improvement under deferiprone in a case of neurodegeneration with brain iron accumulation. *Parkinsonism Relat Disord*. 2012;18:110-112.