

The Effect of Green Tea with EGCG Active Compound in Enhancing the Expression of M2 Microglia Marker (CD206)

by Abdulloh Machin

Submission date: 19-Apr-2023 06:11PM (UTC+0800)

Submission ID: 2069211388

File name: The_Effect_of_Green_Tea_with_EGCG.pdf (8.08M)

Word count: 4730

Character count: 24744

La Renon

Pbren

Pregabalin Capsules 50 mg / 75 mg / 150 mg

Pbren-M

Pregabalin Capsules with Methylcobalamin 75 mg & 750 mcg

Pbren-ET

Pregabalin 75 mg (As Prolonged Release) & Etoricoxib 60 mg Tablets



Levigress

Levetiracetam 250 mg, 500 mg, 750 mg Tablets, 1000 mg PR Tablets

100 mg/ml Syrup and 500 mg / 5 ml Injection



La Renon

Neurology India

Official Publication of the Neurological Society of India

March-April 2022 / Vol 70 / Issue 2



Neurology India • Volume 70 • Issue 2 • March-April 2022 • Pages xxx-xxx

ISSN 0028-3886

www.neurologyindia.com

A premier Journal for Neurosurgery, Neurology & Allied Sciences
Impact Factor of 2.128 (Clarivate Analytics @ 2020)

Wolters Kluwer

Medknow

Access this article online

Quick Response Code:



Website:

www.neurologyindia.com

DOI:

10.4103/0028-3886.344631

The Effect of Green Tea with EGCG Active Compound in Enhancing the Expression of M2 Microglia Marker (CD206)

Abdulloh Machin, Dinda Divamillenia¹, Nurmawati Fatimah², Imam Susilo³, D Agus Purwanto⁴, Imam Subadi⁵, Paulus Sugianto⁶, Muhammad Hamdan⁶, O Galuh Pratiwi¹, Dyah Fauziah⁷, Kenia Izzawa⁸

Neurologist Consultant, Universitas Airlangga, Dr. Soetomo General Hospital, Universitas Airlangga Hospital, Surabaya, Indonesia, ¹Undergraduate, Universitas Airlangga, Surabaya, Indonesia, ²Magister of Science, Universitas Airlangga, Surabaya, ³Anatomical Pathology Consultant, Universitas Airlangga, Dr. Soetomo General Hospital, Surabaya, ⁴Professor, Universitas Airlangga General Hospital, Surabaya, ⁵Physical Medicine and Rehabilitation Consultant, Dr. Soetomo General Hospital, Surabaya, ⁶Neurologist Consultant, Dr. Soetomo General Hospital, Surabaya, ⁷Anatomical Pathology Consultant, Universitas Airlangga, Surabaya, ⁸General Doctor, Universitas Airlangga, Dr. Soetomo General Hospital, Surabaya, Indonesia

Address for correspondence:
Dinda Divamillenia,
Jojoran 1 Street Number
25, Mojo, Gubeng,
Surabaya, Indonesia.
E-mail: dinda.
divamillenia-2018@
fk.unair.ac.id

Abstract:

Background: Stroke is a neurological deficit due to vascular disorders. Microglia are the first line of defense against brain injury. Anti-inflammatory cytokines activate M2 microglia, which upregulate CD206. EGCG is abundant in green tea, which has an anti-inflammatory effect.

Objective: To know the effect of green tea with its active compound EGCG on CD206 expression.

Settings and Design: True experimental trial design.

Material and Methods: *Rattus Norvegicus* were divided into six groups: a negative control group (Sham), a positive control group (P0), MCAO mice given 10 mg/kg BW EGCG (P1), 20 mg/kg BW EGCG (P2), 30 mg/kg BW EGCG (P3), and 30 mg/kg BW standardized green tea extract (P4). CD206 expression was measured using immunohistochemistry and scored according to the Allred scoring guidelines.

Statistical Analysis Used: Descriptive test, Levine test, Kolmogorov-Smirnov test, Independent sample *t* test, Pearson correlation test

Results: We discovered that there is a significant difference in CD206 expression between the Sham and P0 groups ($P < 0.05$). In addition, there are significant differences in expression between the sham group and the other two groups (P1 and P2) ($P < 0.05$). Furthermore, when we compared the P0 group with each treatment group, we found that CD206 expression between P0–P2, P0–P3, P0–P4 are significantly different. There is a significant correlation between green tea with its active compound EGCG and CD206 expression enhancement. The correlation is positive.

Conclusions: Green tea with EGCG active compound increases CD206 expression as an M2 marker in the *Rattus norvegicus* with MCAO model.

Key Words:

CD206, EGCG, M2, MCAO, standardized green tea extract

Key Messages:

This study provides a new understanding of the green tea (*Camellia sinensis*) mechanism of action for stroke therapy. This research can be continued further via clinical trials in humans to determine the effect of *Camellia sinensis* on cerebral infarction.

Stroke is the second leading cause of death and the third leading cause of disability worldwide in adults.^[1] Ischemic stroke is the most common type of stroke, accounting for approximately 87% of all stroke cases.^[2] The incidence of stroke increases sharply, with 5–12 per 1,000 population.^[3] The prevalence of stroke increases twofold in low- and middle-income

countries.^[4] Stroke also has a sizeable economic impact, because of stroke burden.^[5]

The first-line defense against brain injury is microglia. During an acute stroke, microglia and peripheral macrophages rapidly go to the

This is an open access journal, and articles are distributed under the terms of the Creative Commons Attribution-NonCommercial-ShareAlike 4.0 License, which allows others to remix, tweak, and build upon the work non-commercially, as long as appropriate credit is given and the new creations are licensed under the identical terms.

For reprints contact: WKHLRPMedknow_reprints@wolterskluwer.com

How to cite this article: Machin A, Divamillenia D, Fatimah N, Susilo I, Purwanto DA, Subadi I, et al. The Effect of Green Tea with EGCG Active Compound in Enhancing the Expression of M2 Microglia Marker (CD206). *Neurol India* 2022;70:530-4.

Submitted: 20-Mar-2021 **Revised:** 16-Aug-2021
Accepted: 23-Sep-2021 **Published:** 03-May-2022

injury site to initiate the release of effector molecules and recruit other immune cells.^[6] Microglia also have the capability to change their morphology. Activated microglia release various cytokines and contribute to increased cell damage, or in later cases, these are also involved in cell repair. During an ischemic stroke, microglia polarizes into the M1 or M2 phenotypes depending on their signaling pattern.^[7] Activation of microglia into M1 phenotypes occurs after infection or injury. M1 phenotypes are characterized by the presence of pro-inflammatory cytokines and high levels of free radicals. Contrary to M1 phenotypes, M2 phenotypes are activated by anti-inflammatory cytokines such as interleukin-4 (IL-4) and IL-13. These are also activated by T-helper 2 (Th2), which further upregulate scavenger receptors on M2 cell surfaces such as the mannose receptor (MRC1/CD206), and M2 phenotypes secrete anti-inflammatory cytokines such as resolution molecules.^[8,9]

The cluster of differentiation 206 (CD206; mannose receptor) is part of the C lectin type. It is a transmembrane glycoprotein and acts as a pattern recognition receptor (PRR).^[10,11] CD206 is expressed in response to increased macrophage levels, particularly M2 macrophages, and M2 microglia are also activated in this case. CD206 is considered a reliable marker for M2 activation in mice and humans because it is expressed mainly in M2 phenotypes. CD206 in M2 increases significantly, when M2 is given IL-4, IL-13, IL-10, or glucocorticoids, while CD206 decreases if there are interferon-gamma (IFN γ) and lipopolysaccharide (LPS).^[12,13] M2 microglia can inhibit inflammation, increase tissue repair and healing, and play a role in neurogenesis and functional repair.^[7,14] Recent studies have shown that M2 microglia assist neurogenesis in a post-stroke model; thus, so it is suitable for functional recovery.^[15]

Thrombolysis using iv-rTPA is the only drug approved by the Food and Drug Administration (FDA), but its efficacy and safety are limited because the time limit for giving iv-rTPA is narrow; thus, only a few acute stroke patients can receive it.^[16] Green tea, with its abundant bioactive polyphenols, including epigallocatechin-3-gallate (EGCG), is the second most common drink in the world, and its consumption is associated with health benefits.^[17,18] EGCG has been shown to prevent pro-inflammatory mediator production and strongly inhibits leukocyte elastase. EGCG also inhibits the activation of inflammation inducers such as matrix metalloproteinase-2 (MMP-2) and MMP-9. Therefore EGCG acts as an anti-inflammatory agent. It also affects phenotype transition from M1 to M2.^[8,19,20] Moreover, EGCG can inhibit IFN γ -inducing expression and LPS regulation while increasing IL-10 and IL-13.^[14,21-23] Therefore, EGCG should boost CD206 stimulator and decrease CD206 inhibitor. According to this information, it is important to know the effect of green tea with its active compound EGCG on increasing CD206 expression as an M2 marker.

Subjects and Methods

Animal

We used a 4-month-old healthy Wistar male mice (*Rattus norvegicus*) weighing 175–225 g (from Gadjah Mada University breeding center, Indonesia) after getting proper acclimatization

in the animal house conditions (12-h lighting cycle) for 1 week with free access to water and standard rodent chow. We performed all experimental procedures according to the ethical standards approved by the Institutional Animal Ethics Committee guidelines for animal care and use, Universitas Airlangga, Indonesia. We divided the animals randomly into six groups. The first group is the negative control group (Sham), the healthy mice. The second group is a positive control group (P0) and included mice that were given water. The third group was treated with 10-mg/kg BW EGCG (P1). The fourth group (P2) was treated with 20-mg/kg BW EGCG. The fifth group was treated with 30-mg/kg BW EGCG (P3). The sixth group (P4) was treated with 30-mg/kg BW standardized green tea extract.

Middle cerebral artery occlusion model

We performed middle cerebral artery occlusion (MCAO) on animals before giving the treatment. First, we anesthetized *Rattus norvegicus* with 80-mg/kg BW ketamine and 10-mg/kg BW xylazine intraperitoneally. Then, we made an incision in the right neck until the common carotid artery was exposed. After finding the internal carotid artery, the artery was clamped using a small bulldog brace for 180 min. We looked at mouse consciousness and whether or not a stroke model emerged.^[24] We performed this model because the technique is easier and the ischemic model in *Rattus norvegicus* can be achieved.

Intervention

We gave the treatment to the mice with EGCG (Xi'an Rongsheng Biotechnology CO., LTD, Keji 3rd Road, Xi'an, China) or green tea extract (PT. Dharma Putra Airlangga, Tegalsari, Surabaya, Indonesia) diluted in aquades with a concentration of 1 mg/ml for seven consecutive days once daily every morning before having a meal. All groups received equivalent volumes using rat sonde. Then, we sacrificed mice after anesthetizing them with 0.1 mg/100 gr BW propofol. Subsequently, we performed an incision on the coronal section of infarcted hemispheric brain tissue from each mouse with a thickness of 1.5 cm before and behind the bregma for immunohistochemical examination. The tissue was preserved in a paraffin block.^[24]

Immunohistochemistry

The paraffin block was placed on a slide, dipped in xylene, and then in ethanol 100%, 95%, and 70% for rehydration. Then, we used 3% peroxide solution to eliminate peroxidase activity. Next, we diluted anti-CD206 mAb (Lsbio ABIN1861753). The slide was then given conjugate enzyme antibodies and dissolved in TBS with 1% BSA before being incubated at room temperature. Chromogen was given for 10 min and rinsed. We provided counterstain if needed. After the slides were dried, we read the expression using a light microscope with 400 \times magnification.

We assessed IHC in a semiquantitative manner based on D.C. Allred, MD guideline scoring. The assessment of proportion score was as follows: 0 = no positive cells, 1 = 0%–1% positive cells, 2 = 1%–10%, 3 = 10%–33%, 4 = between 33%–66%, and 5 = 66%–100% positive cells. There is an assessment of the intensity score based on the average staining intensity, with 0 = negative, 1 = weak, 2 = moderate, and 3 = strong. Allred's score is the total score obtained when the proportion score is added up by the intensity score, with a value that can be 0 or between 2 and 8. Scores of 0 and 2 are interpreted as negative.^[25]

42

Statistical analysis

All the data were analyzed using a descriptive test and then tested for homogeneity using the Levine test, and for normality using the Kolmogorov–Smirnov test. The differences in CD206 expression between the two groups were assessed using an independent sample *t* test. Then, we used the Pearson correlation test to examine the correlation between two variables, which are green tea with its active compound EGCG and CD206 expression enhancement.

Results

Independent sample *t* tests were used to differentiate CD206 expression between every two groups shown in Table 1. We discovered that there is a significant difference in CD206 expression between the Sham and P0, with $P < 0.05$. There are also significant differences between the sham group and the other two groups (P1 and P2) with $P < 0.05$. Furthermore, when we compared the P0 group to each treatment group, we found that CD206 expression between P0–P2, P0–P3, P0–P4 are significantly different.

In addition, we discovered that both EGCG and standardized green tea extract can increase CD206 expression, but standardized green tea extract outperforms EGCG, as shown in Figures 1 and 2a–c. The following section of the analysis, as shown in Table 2, was concerned with determining the correlation between two variables using the Pearson correlation test. As a result, there is a significant correlation between green tea with its active compound EGCG and CD206 expression enhancement. The correlation is positive.

Discussion

Ischemic stroke occurs when the supply of oxygen to the brain is blocked, often caused by a blood clot.^[26] The middle cerebral artery (MCA) is the most frequent area (approximately 80%) to experience occlusion; thus, this artery has been used as a stroke model in experimental animals.^[27] In normal brain conditions, microglia are considered as “resting microglia,” but recent findings have shown that microglia are the brain’s most sensitive sensors. These continuously scan and monitor the parenchyma environment. Once the presence of a brain lesion or dysfunction is detected, the microglial cells are “activated,” displaying inflammatory and phagocytic

features.^[28] When an ischemic stroke occurs, through different signals, microglia can be polarized into the M1 phenotype or M2 phenotype.^[7]

The effect of green tea with EGCG active compounds on CD206 M2 marker expression

In some studies, tea has been ranked second as the most consumed beverage after water.^[29] Among the many tea types, green tea has the largest number of polyphenols and the least amount of caffeine.^[30] Green tea contains abundant EGCG. EGCG can cross the blood–brain barrier and reach the brain parenchyma, which has attracted many researchers.^[31,32]

Based on independent sample *t* test, we found that sham and P0 significantly differ in CD206 expression. This was also observed for Sham–P1 and Sham–P2. Meanwhile, the analysis results for Sham–P3 and Sham–P4 did not show significant differences in CD206 expression. Microglia is always “active” even though there is no pathological condition. In normal and healthy conditions, microglia do not distinguish precisely the way between inflammatory and anti-inflammatory phenotypes. In contrast, the microglia shift slightly toward the anti-inflammatory phenotype, which is beneficial for brain homeostasis. Even without stimulation, microglia are an essential source of neuro-supportive cytokines such as insulin-like growth factor 1 (IGF-1) and brain-derived neurotrophic factor (BDNF). In other words, M2 also acts as an anti-inflammatory in normal brain conditions.^[33] There is a significant difference in CD206 expression between sham and P0. In this study, the sham group consisted of healthy mice, which did not experience a brain infarct, dissimilar to the P0 group. Therefore, the amount of CD206 in sham is higher than in P0. Meanwhile, when CD206 expression was compared between Sham and P3, it showed that the expression is not significantly different. It also happened when CD206 expression of sham compared with P4. In other words, the CD206 level of Sham, P3, and P4 are all high. We compared the P0 group (MCAO mice were given water) with the treatment groups. CD206 expression differs significantly between P0 and P2 (MCAO mice were given EGCG 20 mg/kg BW), P0 and P3 (MCAO mice were given EGCG 30 mg/kg BW), and P0 and P4 (MCAO mice were given standardized green tea extract 30 mg/kg BW). This result shows that the addition of

Table 1: Comparison of median, mean CD206 expression, and significance of the independent *t* test*

Groups (Aim: CD206 expression)	Median (Minimum-Maximum)	Mean±SEM [†]	P [‡]	P [§]
Sham	6 (5-8)	6,18±0,352	-	0.000
P0	3 (0-3)	1,82±1,250	0.000	-
P1	2.5 (0-5)	2,73±1,618	0,000	0.156
P2	4 (3-6)	4,64±0,924	0,003	0,000
P3	5 (5-8)	6,09±1,221	0,860	0,000
P4	6 (5-8)	6,27±1,104	0,853	0,000

*The comparison between Sham or P0 to the treatment groups. [†]SEM: Standard Error of Mean. [‡]The significance of the independent *t* test in comparison to a sham. [§]The significance of the independent *t* test in comparison to a P0

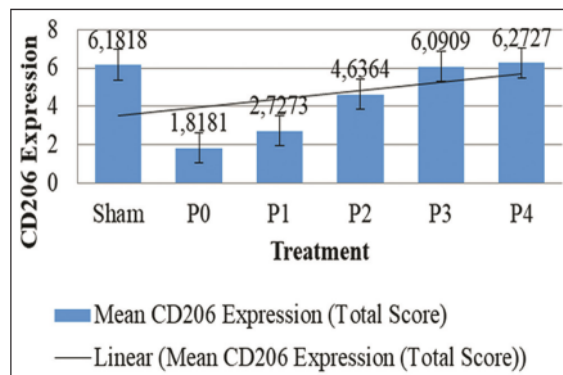


Figure 1: Comparison of the mean CD206 expression (total score) between the P0, P1, P2, P3, P4, and Sham groups

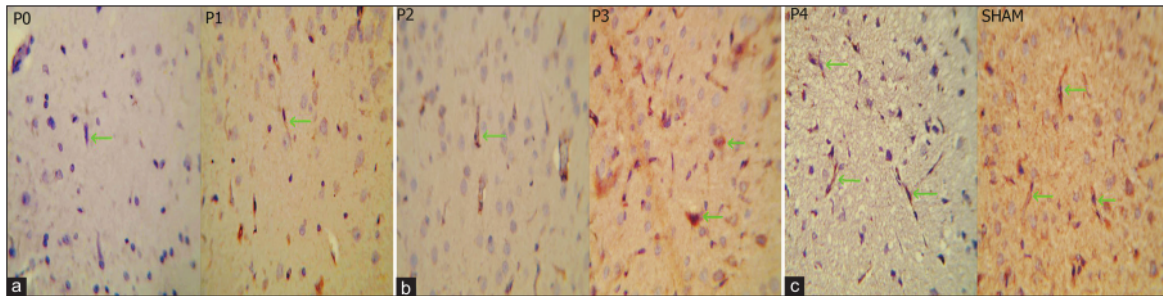


Figure 2: (a) The CD206 expression on M2 microglia of the P0 and P1 groups mice was examined with immunohistochemistry at 400× magnification. Microglia are flat and have long, branched angular projections. The nucleus of microglia is oval or flat. The expression of CD206 is marked by a dark-brownish color on microglia, which is pointed out by the arrow. (b) The CD206 expression on M2 microglia of the P2 × P3 groups mice at 400× magnification. The arrow indicates CD206 expression on microglia, which is marked by a dark-brownish color. (c) The CD206 expression on M2 microglia of the P4 and Sham groups mice at 400 × magnification. A dark-brownish color on microglia indicates CD206 expression, as pointed by the arrow.

Camellia sinensis can increase CD206 expression compared with giving water only.

Our results show that CD206 is abundant in ischemic brains treated with 30-mg/kg BW EGCG and 30-mg/kg BW standardized green tea extract. EGCG can inhibit nitrite oxide, which causes oxidative stress.^[8,19] EGCG has also shown its ability to prevent pro-inflammatory mediators' production and strongly inhibit leukocyte elastase; thus, the activation of inflammation inducers (MMP-2 and MMP-9) cannot be mediated. This process inhibits M1 polarization and increases polarization changes in M2 phenotypes.^[8,19,20] CD206 acts as a marker of M2 microglia; thus, its expression enhancement signifies increased polarization of M2.^[34] EGCG enables increased CD206 expression by enhancing IL-10 and IL-13. EGCG also inhibits IFN γ -induced expression and LPS regulation.^[14,21-23] IL-4, IL-13, and IL-10 are stimulators of CD206 expression, while IFN γ and LPS are its inhibitors.^[12,13] M2 is capable of assisting in tissue repair, remodeling, and wound healing.^[8] It is synergistic with the anti-inflammatory effect of M2 for repairing the post-stroke brain. M2 can inhibit inflammation as well as participate in neurogenesis and functional repair.^[7,14]

Green tea has four leading polyphenol derivatives (known as catechins) due to their structure, namely epigallocatechin-3-gallate (EGCG), epicatechin gallate (ECG), epigallocatechin (EG), and epicatechin (EC).^[24,35] Interestingly, EGCG is very abundant in brewed green tea, with 60%–65% of 240–320-mg catechins.^[18,29,36] According to the comparison of CD206 expression mean total score, we found a significant enhancement of marker expression. However, standardized green tea extract (P4) has a better effect on it than EGCG itself. It may have occurred because standardized green tea extract's compounds work synergistically rather than EGCG individually, which has a better effect and potential for improving cognition post-MCAO.

After we performed the Pearson correlation test, we got the result that there is a significant correlation between green tea with its active compound EGCG and CD206 expression enhancement with positive correlation characteristics. The positive correlation shows that increasing the dose of EGCG or standardized green tea extract enhances the expression of CD206. CD206 itself has a role in resolving inflammation by clearing inflammatory molecules from the blood, as evidenced by the lack of CD206 improving

Table 2: Correlation between the treatment and CD206 expression

	R*	P
Camellia Sinensis vs [†] CD206	0.349	0.004

*R: The Pearson's correlation coefficient. †The significance of the Pearson correlation test. ‡Vs: Versus

inflammatory protein serum levels.^[37] In addition, our study's results are in line with research conducted by Zhang *et al.*^[14] Therefore, data analysis results show that green tea with EGCG active compound increases CD206 expression as an M2 marker in the *Rattus norvegicus* with MCAO model. Our research has the advantage that biased factors affecting the research results can be controlled because it is a true experimental design. Moreover, this study can be applied to humans because both stroke and MCAO pathology occur in the brain. Our study's limitation is the semi-quantitative characteristic of the immunohistochemistry method, and that experimental animals do not accurately have the same biological mechanisms as humans.

Conclusion

Green tea with EGCG active compound increases CD206 expression as an M2 marker in the *Rattus norvegicus* with MCAO model.

Acknowledgements

The author would like to thank the Head of the Department of Pathology, Faculty of Medicine, Universitas Airlangga, the Head of the Department of Neurology, Faculty of Medicine, Universitas Airlangga, and the Head of the Department of Pharmacy Chemistry, Faculty of Pharmacy, Universitas Airlangga. This research was supported by the Ministry of Education and Culture, Universitas Airlangga, Institute for Research and Innovation [grant number 281/UN3.14/PT/2020].

Financial support and sponsorship

This research was supported by the Ministry of Education and Culture, Universitas Airlangga, Institute for Research and Innovation [grant number 281/UN3.14/PT/2020]. Equipment supported by Department of Neurology, Department of Pathology, Faculty of Medicine, Universitas Airlangga, and Department of Pharmacy Chemistry, Faculty of Pharmacy, Universitas Airlangga.

Conflicts of interest

There are no conflicts of interest.

References

- WHO.int. Jenewa: World Health Organization; c2020. Available from: <https://www.who.int/news-room/fact-sheets/detail/the-top-10-causes-of-death>. [Last accessed on 2021 Sep 12].
- Mozaffarian D, Benjamin EJ, Go AS, Arnett DK, Blaha MJ, Cushman M, et al. Heart disease and stroke statistics-2016 update: A report from the American heart association. *Circulation* 2016;133:e38-60.
- Philip-Ephraim E. Emergency management of acute ischaemic stroke. In: Alsheikhly AS, editor. *Essentials of Accident and Emergency Medicine*. London: IntechOpen; 2019. p. 230-46.
- Johnson W, Onuma O, Owolabi M, Sachdev S. Stroke: A global response is needed. *Bull World Health Organ* 2016;94:634-634A.
- Benesch C, Holloway RG. Economic impact of stroke and implications for interventions. *CNS Drugs* 1998;9:29-39.
- Hu X, Li P, Guo Y, Wang H, Leak RK, Chen S, et al. Microglia/macrophage polarization dynamics reveal novel mechanism of injury expansion after focal cerebral ischemia. *Stroke* 2012;43:3063-70.
- Choi JY, Kim JY, Park J, Lee WT, Lee JE. M2 phenotype microglia-derived cytokine stimulates proliferation and neuronal differentiation of endogenous stem cells in ischemic brain. *Exp Neurobiol* 2017;26:33-41.
- Scodeller P, Simón-Gracia L, Kopanchuk S, Tobi A, Kilk K, Säälk P, et al. Precision targeting of tumor macrophages with a CD206 binding peptide. *Sci Rep* 2017;7:14655.
- Saqib U, Sarkar S, Suk K, Mohammad O, Baig MS, Savai R. Phytochemicals as modulators of M1-M2 macrophages in inflammation. *Oncotarget* 2018;9:17937-50.
- Suzuki Y, Shirai M, Asada K, Yasui H, Karayama M, Hozumi H, et al. Macrophage mannose receptor, CD206, predict prognosis in patients with pulmonary tuberculosis. *Sci Rep* 2018;8:13129.
- Azad AK, Rajaram MV, Metz WL, Cope FO, Blue MS, Vera DR, et al. γ -tilmanocept, a new radiopharmaceutical tracer for cancer sentinel lymph nodes, binds to the mannose receptor (CD206). *J Immunol* 2015;195:2019-29.
- Wang S, Cao M, Xu S, Shi J, Mao X, Yao X, et al. Luteolin alters macrophage polarization to inhibit inflammation. *Inflammation* 2020;43:95-108.
- Martinez-Pomares L. The mannose receptor. *J Leukoc Biol* 2012;92:1177-86.
- Zhang J-C, Xu H, Yuan Y, Chen J-Y, Zhang Y-J, Lin Y, et al. Delayed treatment with green tea polyphenol EGCG promotes neurogenesis after ischemic stroke in adult mice. *Mol Neurobiol* 2017;54:3652-64.
- Shin JA, Lim SM, Jeong SI, Kang JL, Park EM. Noggin improves ischemic brain tissue repair and promotes alternative activation of microglia in mice. *Brain Behav Immun* 2014;40:143-54.
- Schwamm LH, Ali SF, Reeves MJ, Smith EE, Saver JL, Messe S, et al. Temporal trends in patient characteristics and treatment with intravenous thrombolysis among acute ischemic stroke patients at get with the guidelines-stroke hospitals. *Circ Cardiovasc Qual Outcomes* 2013;6:543-9.
- Suzuki Y, Miyoshi N, Isemura M. Health-promoting effects of green tea. *Proc Jpn Acad Ser B Phys Biol Sci* 2012;88:88-101.
- Graham HN. Green tea composition, consumption, and polyphenol chemistry. *Prev Med* 1992;21:334-50.
- Zhong Y, Chiou YS, Pan MH, Shahidi F. Anti-inflammatory activity of lipophilic Epigallocatechin gallate (EGCG) derivatives in LPS-stimulated murine macrophages. *Food Chem* 2012;134:742-8.
- Singh NA, Mandal AK, Khan ZA. Potential neuroprotective properties of epigallocatechin-3-gallate (EGCG). *Nutr J* 2016;15:60.
- Hagiwara M, Matsushita K. Epigallocatechin gallate suppresses LPS endocytosis and nitric oxide production by reducing Rab5-caveolin-1 interaction. *Biomed Res* 2014;35:145-51.
- Giunta B, Obregon D, Hou H, Zeng J, Sun N, Nikolic V, et al. EGCG mitigates neurotoxicity mediated by HIV-1 proteins gp120 and Tat in the presence of IFN-gamma: Role of JAK/STAT1 signaling and implications for HIV-associated dementia. *Brain Res* 2006;1123:216-25.
- Bao J, Liu W, Zhou HY, Gui YR, Yang YH, Wu MJ, et al. Epigallocatechin-3-gallate alleviates cognitive deficits in APP/PS1 mice. *Curr Med Sci* 2020;40:18-27.
- Machin A, Purwanto DA, Nasronuddin, Sugianto P, Aulanni'am A, Subadi I, et al. Camellia sinensis with its active compound EGCG can decrease necroptosis via inhibition of HO-1 expression. *Eurasia J Biosci* 2020;14:1813-20.
- Allred DC, Harvey JM, Berardo M, Clark GM. Prognostic and predictive factors in breast cancer by immunohistochemical analysis. *Mod Pathol* 1998;11:155-68.
- CDC.gov. Georgia: Centers for Disease Control and Prevention; c2021. Available from: https://www.cdc.gov/stroke/types_of_stroke.htm. [Last accessed on 2021 Sep 12].
- Chiang T, Messing RO, Chou W-H. Mouse model of middle cerebral artery occlusion. *J Vis Exp* 2011;2761. doi: 10.3791/2761.
- Fernández-Arjona MD, Grondona JM, Granados-Durán P, Fernández-Llebrez P, López-Ávalos MD. Microglia morphological categorization in a rat model of neuroinflammation by hierarchical cluster and principal components analysis. *Front Cell Neurosci* 2017;11:235.
- Habtemariam S. The chemical and pharmacological basis of tea (*Camellia sinensis* (L.) Kuntze) as potential therapy for type 2 diabetes and metabolic syndrome. In: Habtemariam S, editor. *Medicinal Foods as Potential Therapies for Type-2 Diabetes and Associated Diseases*. 1st ed. London: Academic Press; 2019. p. 839-906.
- Sharma N, Vashist H, Kumar A. Reputation of herbal drugs in treatments of liver cancer. *Innov Int J Med Pharm Sci* 2018;3:9-16.
- Ortiz-López L, Márquez-Valadez B, Gómez-Sánchez A, Silva-Lucero MD, Torres-Pérez M, Téllez-Ballesteros RI, et al. Green tea compound epigallocatechin-3-gallate (EGCG) increases neuronal survival in adult hippocampal neurogenesis *in vivo* and *in vitro*. *Neuroscience* 2016;322:208-20.
- Wang Y, Li M, Xu X, Song M, Tao H, Bai Y. Green tea epigallocatechin-3-gallate (EGCG) promotes neural progenitor cell proliferation and sonic hedgehog pathway activation during adult hippocampal neurogenesis. *Mol Nutr Food Res* 2012;56:1292-303.
- Cherry JD, Olschowka JA, O'Banion MK. Are "Resting" microglia more "M2"? *Front Immunol* 2014;5:594.
- Xu ZJ, Gu Y, Wang CZ, Jin Y, Wen XM, Ma JC, et al. The M2 macrophage marker CD206: A novel prognostic indicator for acute myeloid leukemia. *Oncoimmunology* 2020;9:1683347.
- Yu J, Jia Y, Guo Y, Chang G, Duan W, Sun M, et al. Epigallocatechin-3-gallate protects motor neurons and regulates glutamate level. *FEBS Lett* 2010;584:2921-5.
- Itoh T, Imano M, Nishida S, Tsubaki M, Mizuguchi N, Hashimoto S, et al. (-)-Epigallocatechin-3-gallate increases the number of neural stem cells around the damaged area after rat traumatic brain injury. *J Neural Transm (Vienna)* 2012;119:877-90.
- Röszer T. Understanding the mysterious M2 macrophage through activation markers and effector mechanisms. *Mediators Inflamm* 2015;2015:816460.

The Effect of Green Tea with EGCG Active Compound in Enhancing the Expression of M2 Microglia Marker (CD206)

ORIGINALITY REPORT

18%

SIMILARITY INDEX

14%

INTERNET SOURCES

13%

PUBLICATIONS

5%

STUDENT PAPERS

PRIMARY SOURCES

1	mafiadoc.com Internet Source	1%
2	www.researchgate.net Internet Source	1%
3	repository.unair.ac.id Internet Source	1%
4	ogma.newcastle.edu.au Internet Source	1%
5	www.frontiersin.org Internet Source	1%
6	María del Mar Fernández-Arjona, Jesús M. Grondona, Pablo Granados-Durán, Pedro Fernández-Llebrez, María D. López-Ávalos. "Microglia Morphological Categorization in a Rat Model of Neuroinflammation by Hierarchical Cluster and Principal Components Analysis", <i>Frontiers in Cellular Neuroscience</i> , 2017 Publication	1%

7	www.journalijar.com Internet Source	1 %
8	www.mdpi.com Internet Source	1 %
9	<p>Gallagher, Emily J., Derek LeRoith, Rebeca Franco, Irimi Markella Antoniou, Anupma Nayak, Jennifer Livaudais-Toman, and Nina Bickell. "Metabolic syndrome and pre-diabetes contribute to racial disparities in breast cancer outcomes: hypothesis and proposed pathways : Metabolic Syndrome in Cancer Disparities", <i>Diabetes/Metabolism Research and Reviews</i>, 2016.</p> Publication	1 %
10	<p>Jung-Hwan Kim, Tae-Jin Park, Jin-Soo Park, Min-Seon Kim, Won-Jae Chi, Seung-Young Kim. "Luteolin-3'-O-Phosphate Inhibits Lipopolysaccharide-Induced Inflammatory Responses by Regulating NF-κB/MAPK Cascade Signaling in RAW 264.7 Cells", <i>Molecules</i>, 2021</p> Publication	<1 %
11	www.tandfonline.com Internet Source	<1 %
12	synapse.koreamed.org Internet Source	<1 %

13	www.naturalnews.com Internet Source	<1 %
14	neurologyindia.com Internet Source	<1 %
15	Grace Ampem, Hind Azegrouz, Árpád Bacsadi, Lajos Balogh, Susanne Schmidt, Julianna Thuróczy, Tamás Röszer. "Adipose tissue macrophages in non-rodent mammals: a comparative study", Cell and Tissue Research, 2015 Publication	<1 %
16	Submitted to University of Southampton Student Paper	<1 %
17	digital.library.adelaide.edu.au Internet Source	<1 %
18	Polytimi Paschalidi, Ioannis Gkouveris, Akrivoula Soundia, Evangelos Kalfarentzos et al. "The role of M1 and M2 macrophage polarization in progression of medication-related osteonecrosis of the jaw", Clinical Oral Investigations, 2020 Publication	<1 %
19	academic.oup.com Internet Source	<1 %
20	www.j-stroke.org Internet Source	<1 %

21 Cherry, Jonathan D., John A. Olschowka, and M. Kerry O'Banion. "Are Resting Microglia More M2?", *Frontiers in Immunology*, 2014.

Publication

<1 %

22 Ja Yong Choi, Jong Youl Kim, Jae Young Kim, Joohyun Park, Won Taek Lee, Jong Eun Lee. "M2 Phenotype Microglia-derived Cytokine Stimulates Proliferation and Neuronal Differentiation of Endogenous Stem Cells in Ischemic Brain", *Experimental Neurobiology*, 2017

Publication

<1 %

23 Wang, Guohua, Jia Zhang, Xiaoming Hu, Lili Zhang, Leilei Mao, Xiaoyan Jiang, Anthony Kian-Fong Liou, Rehana K Leak, Yanqin Gao, and Jun Chen. "Microglia/macrophage polarization dynamics in white matter after traumatic brain injury", *Journal of Cerebral Blood Flow & Metabolism*, 2013.

Publication

<1 %

24 www.nature.com
Internet Source

<1 %

25 Chunbao Guo, Xianqing Jin. "Chemoprotection Effect of Multidrug Resistance 1 (MDR1) Gene Transfer to Hematopoietic Progenitor Cells and Engrafted in Mice with Cancer Allows

<1 %

Intensified Chemotherapy", Cancer Investigation, 2009

Publication

26

Ling Ding, Hong Ye, Long-dian Gu, An-qing Du, Xin-lu Yuan. "Echinacoside Alleviates Cognitive Impairment in Cerebral Ischemia Rats through α 7nAChR-Induced Autophagy", Chinese Journal of Integrative Medicine, 2022

Publication

<1 %

27

d-nb.info

Internet Source

<1 %

28

garuda.kemdikbud.go.id

Internet Source

<1 %

29

www.ebi.ac.uk

Internet Source

<1 %

30

www.nuvancehealth.org

Internet Source

<1 %

31

www.talkingaboutthescience.com

Internet Source

<1 %

32

"Infectious cost of leisure (Keynote lecture)", Clinical Microbiology and Infection, 4/2001

Publication

<1 %

33

Pablo Scodeller, Lorena Simón-Gracia, Sergei Kopanchuk, Allan Tobi et al. "Precision Targeting of Tumor Macrophages with a

<1 %

CD206 Binding Peptide", Scientific Reports,
2017

Publication

34

S. Moyanova, L. Kortenska, R. Kirov, I. Iliev.
"Quantitative Electroencephalographic
Changes Due To Middle Cerebral Artery
Occlusion By Endothelin 1 In Conscious Rats",
Archives of Physiology and Biochemistry, 2008

Publication

<1 %

35

atrium.lib.uoguelph.ca

Internet Source

<1 %

36

bmccgenomdata.biomedcentral.com

Internet Source

<1 %

37

bsdwebstorage.blob.core.windows.net

Internet Source

<1 %

38

eresources.uin-malang.ac.id

Internet Source

<1 %

39

ntnuopen.ntnu.no

Internet Source

<1 %

40

www.research.uky.edu

Internet Source

<1 %

41

www.thieme-connect.com

Internet Source

<1 %

42

www.wjgnet.com

Internet Source

<1 %

43

"Cellular and Molecular Approaches to Regeneration and Repair", Springer Science and Business Media LLC, 2018

Publication

<1 %

44

Aitor Rementería, Fernando Abaitua, Roberto García-Tobalina, Fernando Hernando, José Pontón, María Jesús Sevilla. "Resistance to candidiasis and macrophage activity in chitin-treated mice", FEMS Immunology & Medical Microbiology, 2006

Publication

<1 %

45

Byung Joo Chae, Ja Seong Bae, Hyeon Woo Yim, Ahwon Lee, Byung Joo Song, Hae Myung Jeon, Myung Hoon Chun, Sang Seol Jung. "Measurement of ER and PR status in breast cancer using the QuantiGene2.0 assay", Pathology, 2011

Publication

<1 %

46

Qi Chen, Xuebo Shao, Yanyan He, Enkui Lu, Lijun Zhu, Weidong Tang. "Norisoboldine Attenuates Sepsis-Induced Acute Lung Injury by Modulating Macrophage Polarization *via* PKM2/HIF-1 α /PGC-1 α Pathway", Biological and Pharmaceutical Bulletin, 2021

Publication

<1 %

Exclude quotes Off

Exclude matches Off

Exclude bibliography On

The Effect of Green Tea with EGCG Active Compound in Enhancing the Expression of M2 Microglia Marker (CD206)

GRADEMARK REPORT

FINAL GRADE

/100

GENERAL COMMENTS

Instructor

PAGE 1

PAGE 2

PAGE 3

PAGE 4

PAGE 5

PAGE 6
