



World Journal of Advanced Research and Reviews

WJARR ISSN Approved International Journal with High Impact Factor for fast publication of Research and Review articles

[HOME](#) [ABOUT US](#) [VIEW ARTICLES](#) [AUTHOR'S GUIDELINES](#) [JOIN US](#)

[DOWNLOADS](#) [CONTACT US](#)

Important Links

[Submit Manuscript](#)

[Call for Special Issue](#)

[Article Processing Fee](#)

[Track Manuscript](#)

[Journals Policies](#)

[Publication Ethics and Malpractice Statement](#)

Call for Paper

[Vol. 18, Issue 3, June 2023](#)

Editorial Board of International Journal: World Journal of Advanced Research and Review

Editor in chief

[Dr. Ashok P. Hegade](#), (Ph.D. Pharmaceutics)
editor@wjarr.com

Editorial Board Members

[Dr. Satya Ranjan Sarker](#), Associate Professor, Department of Biotechnology and Genetic Engineering, Jahangirnagar University, Savar Upazila, Dhaka (Bangladesh)

[Dr. Refat Abd El Samie Sadek](#), Professor and Head, Department of Medical Microbiology, Faculty of Medicine, Port Said University, Port Said (Egypt)

[Dr. Jithesh Madhavan](#), Professor and Head, Department of Kayachikista and PG studies in Manas roga, Vaidyaratnam PS varier Ayurveda College, Kottakkal, Kerala (India)

[Dr. U. Srinivasa](#), Professor and Head, Department of Pharmacognosy and Phytochemistry, Srinivas College of Pharmacy, Valachil, Arkula, Karnataka (India)

[Dr. Vildan Mevsin](#), Professor, Department of Family Medicine, Dokuz Eylul University School of Medicine, Izmir, Turkey

[Dr. Waheed Ali Panhwar](#), Assistant Professor, Department of Zoology, Shah Abdul Latif University, Khairpur, Sindh (Pakistan)

Submission : up to 25th June

Editorial decision: 48 hrs

[Call for paper details](#)

Journal Indexing



[Dr. Badmanaban R.](#), Professor and Head, Department of Pharmacognosy, Nirmala College of Pharmacy, Muvattupuzha, Ernakulam, Kerala-686661, (INDIA)

[Dr. Angelo R. Santos](#), Associate Professor Head, ISO-Quality Management System Nueva Ecija University of Science and Technology, Cabanatuan City (Philippines).

[Dr. Luay Abdulwahid Shihab](#), Assistant Professor, College of Nursing, University of Basrah, Basrah (Iraq).

Join Editorial Board of WJARR an International Journal (2023-2024)

World Journal of Advanced Research and Reviews (WJARR) is committed to have dynamic and potential Editorial board members. We are currently expanding our editorial board for the year 2023-2024. To act as Editorial Board Members, the active researcher with excellent background in all the subject area falling within our journals scope can [Join us](#).



Important Links

[Submit Manuscript](#)

[Call for Special Issue](#)

[Article Processing Fee](#)

[Track Manuscript](#)

[Journals Policies](#)

[Publication Ethics and Malpractice Statement](#)

Call for Paper

[Vol. 18, Issue 3, June 2023](#)

Volume 18 - Issue 3 (June 2023)

Attendance system based on facial recognition using multi-task convolutional neural network

Lance Andrew Rolon, Caye Angelica Lusing, John Bryan Aquino, Criselle Centeno, Ariel Antwaun Rolando Sison

Article DOI: 10.30574/wjarr.2023.18.3.0971 <https://doi.org/10.30574/wjarr.2023.18.3.0971>

[View Abstract](#)

[Download PDF](#)

Effect of motor relearning programme on neurological functions and level of disability on upper limb activity in post-stroke patients

Anmol Narang, Reena Arora, Lalit Arora

Article DOI: 10.30574/wjarr.2023.18.3.0961 <https://doi.org/10.30574/wjarr.2023.18.3.0961>

[View Abstract](#)

[Download PDF](#)

Relationship between latrine access with stunting in 20 villages of stunting focus, Pasuruan district

Nurul Izzah Ramadhani

Article DOI: 10.30574/wjarr.2023.18.3.1000 <https://doi.org/10.30574/wjarr.2023.18.3.1000>

[View Abstract](#)

Submission : up to 25th June

Editorial decision: 48 hrs

[Call for paper details](#)

[Download PDF](#)

Nutrition and Helicobacter pylori infection in gastric disease

Selma İrem SÖZEN, Hafize Kovanci, Muhammed Said Daikılıç, Selim SÖZEN

Article DOI: 10.30574/wjarr.2023.18.3.1005 <https://doi.org/10.30574/wjarr.2023.18.3.1005>

[View Abstract](#)

[Download PDF](#)

A rare association between Xeroderma pigmentosum and diffuse large B-cell lymphoma: A case report

Yasmina Benhalima, Fatima zahra Lahlimi, Ilias Tazi

Article DOI: 10.30574/wjarr.2023.18.3.1037 <https://doi.org/10.30574/wjarr.2023.18.3.1037>

[View Abstract](#)

[Download PDF](#)

Community policing and security management in Nigeria: A study of Abuja arterial routes and satellite settlements-Lugbe and Chika

ADELANI Sunday Isaac, ZAMANI Andrew E, ADEDAYO Lisa Oritseshemeye, MBA Ukweni, AMAKIRI Helen Omavuyayen, ADAMA Mustapha Ahmed

Article DOI: 10.30574/wjarr.2023.18.3.0879 <https://doi.org/10.30574/wjarr.2023.18.3.0879>

[View Abstract](#)

[Download PDF](#)

Risk Factors for Cumulative Trauma Disorders (CTDs) Complaints

Suherdin Suherdin, Tiara Puspita Seri, Ratna Dian Kurniawati

Article DOI: 10.30574/wjarr.2023.18.3.1016 <https://doi.org/10.30574/wjarr.2023.18.3.1016>

[View Abstract](#)

[Download PDF](#)

Theory and practice in secure software development lifecycle: A comprehensive survey

Journal Indexing





Martin Otieno, David Odera, Jairus Ekume Ounza

Article DOI: 10.30574/wjarr.2023.18.3.0944 DOI url: <https://doi.org/10.30574/wjarr.2023.18.3.0944>

[View Abstract](#)

[Download PDF](#)

Job opportunities of employees in the context of digital transformation

Yen Thi Doan, Hong Thi Nguyen

Article DOI: 10.30574/wjarr.2023.18.3.1033 DOI url: <https://doi.org/10.30574/wjarr.2023.18.3.1033>

[View Abstract](#)

[Download PDF](#)

Flexural strength of 3D printed posterior dental restorations: A Narrative review of the literature

José Enrique Orellana Vélez, Sebastián Anthony Gavilanes Samiento, Daniela Andrea Astudillo-Rubio

Article DOI: 10.30574/wjarr.2023.18.3.1013 DOI url: <https://doi.org/10.30574/wjarr.2023.18.3.1013>

[View Abstract](#)

[Download PDF](#)

Influencing factors of smoking behavior among adolescents: A literature review

A'al Puspita, Sinta Nuriyah Khilwatul Ilmiyah

Article DOI: 10.30574/wjarr.2023.18.3.1020 DOI url: <https://doi.org/10.30574/wjarr.2023.18.3.1020>

[View Abstract](#)

[Download PDF](#)

Some issues of the formation of microbial Cenosis in infants

Shorena Khetsuriani

Article DOI: 10.30574/wjarr.2023.18.3.1041 DOI url: <https://doi.org/10.30574/wjarr.2023.18.3.1041>

[View Abstract](#)

[Download PDF](#)

Condyloma of the urethra in women: A case report

Nabil Alaoui Mhammedi, Rhyan Alami Ouaddane, Mohammed Fadi Taxi, Mohammed Jamal El Fassi, Moulay Hassan Farih

Article DOI: 10.30574/wjarr.2023.18.3.0602 DOI url: <https://doi.org/10.30574/wjarr.2023.18.3.0602>

[View Abstract](#)

[Download PDF](#)

Mitigating the impact of global recession on construction projects: Exploring potential solutions

Taiwo Anthony Arowolo *, Oluwaseun Ebenezer Olowolayemo, Olaosebikan Clement Babalola, Olumuyiwa Michael Alabi and Martins Olugbenga Popoola

Article DOI: 10.30574/wjarr.2023.18.3.1029 DOI url: <https://doi.org/10.30574/wjarr.2023.18.3.1029>

[View Abstract](#)

[Download PDF](#)

Phytochemical screening and effects of aqueous extracts of *Cymbopogon citratus*(DC) *Staptand Origanum vulgare* (LINN) on the biochemical and haematological profile of Wistar strain albino rats

Aminat Omope Yusuf, Emily Akubia Nzeribe, Patience Ogbenyeanu Nwadiaro, Timothy Olugbenga Ogundeko, Ethel Ihemjiaba Ekam, Ene Patricia Ejembi, Festus Chukwuemeka Onwuliri, Cornelius Sunday SaliuBello

Article DOI: 10.30574/wjarr.2023.18.3.0415 DOI url: <https://doi.org/10.30574/wjarr.2023.18.3.0415>

[View Abstract](#)

[Download PDF](#)

Innovative strategies for the development of business model canvas in coconut charcoal export companies: A case study of Yogyakarta

Safiya Iskandarovna Muininova, Bulan Prabawani, Andi Wijayanto

Article DOI: 10.30574/wjarr.2023.18.3.1025 DOI url: <https://doi.org/10.30574/wjarr.2023.18.3.1025>

[View Abstract](#)[Download PDF](#)

Improving knowledge of antemortem dental records through community empowerment programs in disaster-prone areas of Indonesia

Beta Novia Rizky, Arofi Kurniawan, Beshlina Fitri Widayanti Roosyanto
Prakoewa, An'nisaa Chusida, Aulia Ramadhani, Aula Husna Nisrinaningtyas,
Azra Rahma Yuniar, Mieke Sylvia Margaretha

Article DOI: 10.30574/wjarr.2023.18.3.0967 DOI url:
<https://doi.org/10.30574/wjarr.2023.18.3.0967>

[View Abstract](#)[Download PDF](#)

One phase prosthetic and orthodontic treatment in children: Case study

Sindy Cornelia Nelwan, Seno Pradopo, Betadion Rizki Sinaredi, Barnabas
Bonardo, Brian Maulani, Puspita Ayuningtyas

Article DOI: 10.30574/wjarr.2023.18.3.0921 DOI url:
<https://doi.org/10.30574/wjarr.2023.18.3.0921>

[View Abstract](#)[Download PDF](#)

Development of novel real-time intranet-based food ordering system

S. V. Viraktamath, Raghavendra Kowtal, Akash Patilkulkarni, Rachit Alagundagi,
Afreen Baddurkhan

Article DOI: 10.30574/wjarr.2023.18.3.1015 DOI url:
<https://doi.org/10.30574/wjarr.2023.18.3.1015>

[View Abstract](#)[Download PDF](#)

Anxiety levels of ICU patients at tertiary referral hospital using Visual Analog Scale for Anxiety (VAS-A)

Amatullah Hayyatunnopus, Bambang Pujo Samedri, Khairina, Royke Tony Kalalo

Article DOI: 10.30574/wjarr.2023.18.3.1024 DOI url:
<https://doi.org/10.30574/wjarr.2023.18.3.1024>

[View Abstract](#)[Download PDF](#)

Announcement of accounting performance variables predatory power on share prices of listed deposit money banks in Nigeria

Ane Ojobo Jacob, Sunday Egbe Idaka, Gabriel Femi Goodwill

Article DOI: 10.30574/wjarr.2023.18.3.1006 DOI url:
<https://doi.org/10.30574/wjarr.2023.18.3.1006>

[View Abstract](#)[Download PDF](#)

Factors associated with premarital sexual behavior in adolescents at SMA X Kendari City in 2023

Farit Reza, Fithria, Novi Hasdamayanti

Article DOI: 10.30574/wjarr.2023.18.3.1023 DOI url:
<https://doi.org/10.30574/wjarr.2023.18.3.1023>

[View Abstract](#)[Download PDF](#)

Artificial intelligence: Its impact on employability

Gomes Rickardo, Santos Moiriele

Article DOI: 10.30574/wjarr.2023.18.3.1056 DOI url:
<https://doi.org/10.30574/wjarr.2023.18.3.1056>

[View Abstract](#)[Download PDF](#)

Prevention dental caries by improving oral hygiene through a high-fiber diet in children with mixed dentition: Experimental study in Kediri, East Java, Indonesia

Moh. Khafid, Alvi Annisa Ananda Putri Triharsono, Danik Iga Prasiska

Article DOI: 10.30574/wjarr.2023.18.3.1049 DOI url:
<https://doi.org/10.30574/wjarr.2023.18.3.1049>

[View Abstract](#)[Download PDF](#)

Comprehensibility of wasei eigo among native speakers teaching English as a foreign language in Japan

Joselito Bayya Bisenio, Esperval Cozhar H. Cadio

Article DOI: 10.30574/vjarr.2023.18.3.0996 DOI url:
<https://doi.org/10.30574/vjarr.2023.18.3.0996>

[View Abstract](#)[Download PDF](#)

The effect of government roles, family education, and community attitudes on juvenile delinquency in Gorontalo City, Indonesia

Fitri Parman, Evi P. Hulukatli, Abdul Haris Panai, Novianty Djafri

Article DOI: 10.30574/vjarr.2023.18.3.1057 DOI url:
<https://doi.org/10.30574/vjarr.2023.18.3.1057>

[View Abstract](#)[Download PDF](#)

Patient motivation, satisfaction and attitudes towards involvement in inter-professional collaborative practice: A cross-sectional study

Shamima Akter, Saddam Hossain, Sk. Moniruzzaman, Sultana Nasreen

Article DOI: 10.30574/vjarr.2023.18.3.1035 DOI url:
<https://doi.org/10.30574/vjarr.2023.18.3.1035>

[View Abstract](#)[Download PDF](#)

Correlation between hypothyroidism and type 2 diabetes: A cross-sectional study

Muznah Tayyab, Hamnah Tayyab, Syed Murtaza Haider Zaidi, Amna Shamim, Aima Javaid, Amna Zafar, Israr ul Haque Toor

Article DOI: 10.30574/vjarr.2023.18.3.1040 DOI url:
<https://doi.org/10.30574/vjarr.2023.18.3.1040>

[View Abstract](#)[Download PDF](#)

Perceptions of hospitality management students of Nueva Ecija University of Science and Technology to different learning modalities

May Nerissa S. Lopez, Ralph Christopher M. Ramos

Article DOI: 10.30574/vjarr.2023.18.3.1047 DOI url:
<https://doi.org/10.30574/vjarr.2023.18.3.1047>

[View Abstract](#)[Download PDF](#)

The role of leadership programs in shaping social skills of college students in Nueva Ecija

John Rowell T. Obligado, Rita L. Cajucom, Rhandelle M. Santos, Don King V. Dalusong

Article DOI: 10.30574/vjarr.2023.18.3.1046 DOI url:
<https://doi.org/10.30574/vjarr.2023.18.3.1046>

[View Abstract](#)[Download PDF](#)

Development of cardiac phantom which mimics the heart function using a 4.7t preclinical MRI system for cardiac imaging

Eze BE, Ettah EB, Ushie, PO, Bassey AE, Igomah GO

Article DOI: 10.30574/vjarr.2023.18.3.0463 DOI url:
<https://doi.org/10.30574/vjarr.2023.18.3.0463>

[View Abstract](#)[Download PDF](#)

Stability indicating RP-HPLC method development and validation of Terbinafine in pure and pharmaceutical formulation

M. Lakshmi Surekha, M. Uma Sampada, T. Yuvasaidurgamouli, Y. SatyaNarayana, T. BharathTeja

Article DOI: 10.30574/vjarr.2023.18.3.0156 DOI url:
<https://doi.org/10.30574/vjarr.2023.18.3.0156>

[View Abstract](#)[Download PDF](#)

Comparison of knowledge and behavior on genital care between health and non-health faculty students at Universitas Airlangga

Rahma Ananda Zhafrah, Endyka Erye Frety, Eighty Wardiyan Kurniawati

Article DOI: 10.30574/vjarr.2023.18.3.1051 DOI url:
<https://doi.org/10.30574/vjarr.2023.18.3.1051>

[View Abstract](#)[Download PDF](#)

Experience with a medium chain triglyceride complex and changes in mental focus and score in different modes of golf transport and play

Neil Ernest Wolkodoff, Gerald Martin Haase, Reginald Wade Kapteyn

Article DOI: 10.30574/wjarr.2023.18.3.1014
https://doi.org/10.30574/wjarr.2023.18.3.1014

[View Abstract](#)

[Download PDF](#)

Demographic features of patients seeking cosmetic surgery in southern Nigeria

Kingsley Okechukwu Opara, Anthony Onyekachi Uzoho

Article DOI: 10.30574/wjarr.2023.18.3.1053
https://doi.org/10.30574/wjarr.2023.18.3.1053

[View Abstract](#)

[Download PDF](#)

Surgical approach techniques for extraction of impacted or retained mesiodens: Literature review

Jonathan Antonio Pasaco González, Yuliana del Cisne Luzuriaga Torres, Mario Esteban Calderón Calle

Article DOI: 10.30574/wjarr.2023.18.3.0997
https://doi.org/10.30574/wjarr.2023.18.3.0997

[View Abstract](#)

[Download PDF](#)

The time of making a strategic decision in transport management: Own, outsourced or mixed fleet?

Gomes Rickardo, Silva Bruno

Article DOI: 10.30574/wjarr.2023.18.3.1079
https://doi.org/10.30574/wjarr.2023.18.3.1079

[View Abstract](#)

[Download PDF](#)

The characteristic and sensory evaluation of arabica Semendo coffee in high-speed stirring cold brew and common brew

Pipit Pajarwati, Agus Wijaya, Budi Santoso

Article DOI: 10.30574/wjarr.2023.18.3.1061
https://doi.org/10.30574/wjarr.2023.18.3.1061

[View Abstract](#)

[Download PDF](#)

Legal consequences of making of electronic notary deeds on the authenticity of the deed

Siti Malikhatun Badriyah, Marjo, R. Suharto, Mas'ut

Article DOI: 10.30574/wjarr.2023.18.3.1071
https://doi.org/10.30574/wjarr.2023.18.3.1071

[View Abstract](#)

[Download PDF](#)

Nexus between environmental qualities, institutional quality and FDI inflows in Lower-income Countries

Md. Qamruzzaman

Article DOI: 10.30574/wjarr.2023.18.3.1045
https://doi.org/10.30574/wjarr.2023.18.3.1045

[View Abstract](#)

[Download PDF](#)

Evaluation of burden of polypharmacy and potential drug related problems in patients with chronic kidney disease

Likhitha R Bhandari, Megha Mariyam Thomas, Reeba Roy, Sheba Mariam Varughese, Sruthi Viswanathan

Article DOI: 10.30574/wjarr.2023.18.3.1059
https://doi.org/10.30574/wjarr.2023.18.3.1059

[View Abstract](#)

[Download PDF](#)

The effect of gargling with green tea extract solution (Camelia sinensis) in efforts to prevent caries incidence: A systematic review

Gilang Ratri Sakti, Karina Lawindra, Tantiiana

Article DOI: 10.30574/wjarr.2023.18.3.1031
https://doi.org/10.30574/wjarr.2023.18.3.1031

[View Abstract](#)

[Download PDF](#)

Epidemiology of intestinal parasitosis in the population of Agadir City, Morocco

Imane Ouahidi, Krza BARKATE, Ayoub RAFEI, EL Mostafa ELMEZOUARI, Redouane MOUTAJ

Article DOI: 10.30574/wjarr.2023.18.3.1070
<https://doi.org/10.30574/wjarr.2023.18.3.1070>

[View Abstract](#)[Download PDF](#)

On the virtue of practicality for scientists

Wu Wenqing

Article DOI: 10.30574/wjarr.2023.18.3.0551
<https://doi.org/10.30574/wjarr.2023.18.3.0551>

[View Abstract](#)[Download PDF](#)

Students unrest in Nigerian universities: Types, causes and administrative strategies to the challenges

Joseph Efe, Anho, Jane Golohor Kporhobo, Juliet Ufuoma Aweto

Article DOI: 10.30574/wjarr.2023.18.3.1072
<https://doi.org/10.30574/wjarr.2023.18.3.1072>

[View Abstract](#)[Download PDF](#)

Determination the lipid profiles and the impact of anti-mullerian hormone on the levels of ovarian reserve in infertile women

Hanan Kareem Mohammed Al-Jaf, Volkan Eyüpoğlu, Shifa Jaber Sahal

Article DOI: 10.30574/wjarr.2023.18.3.1060
<https://doi.org/10.30574/wjarr.2023.18.3.1060>

[View Abstract](#)[Download PDF](#)

Strategic revamping of natural rubber (*Hevea brasiliensis*) production system: Implications for livelihood sustainability in Delta state, Nigeria

Felix Odemero ACHOJA, Sunday Oba AKPAROBI

Article DOI: 10.30574/wjarr.2023.18.3.1021
<https://doi.org/10.30574/wjarr.2023.18.3.1021>

[View Abstract](#)[Download PDF](#)

Face recognition based physical layer security system for next-generation wireless communication

Md. Ariful Islam, Md. Tofail Ahmed, Md. Inran Hossain, Md. Humaun Kabir, Sujit Roy

Article DOI: 10.30574/wjarr.2023.18.3.1099
<https://doi.org/10.30574/wjarr.2023.18.3.1099>

[View Abstract](#)[Download PDF](#)

Typical target lesion with a central blister in erythema multiforme major caused by drug allergy in a toddler

Aisyah Az Zahra, Dewi Nurarifah, Afif Nurul Hidayati, Yuri Widia, Novianti Rizky Reza, Regitta Indra Agusni, Arnyta Denissafitri

Article DOI: 10.30574/wjarr.2023.18.3.1077
<https://doi.org/10.30574/wjarr.2023.18.3.1077>

[View Abstract](#)[Download PDF](#)

Risk factors and prevention measurements of central line-associated bloodstream infections

Shorena Khetsuriani

Article DOI: 10.30574/wjarr.2023.18.3.1089
<https://doi.org/10.30574/wjarr.2023.18.3.1089>

[View Abstract](#)[Download PDF](#)

A case of delayed diagnosis of Williams-Beuren syndrome

Bouchra Aabbassi, Fatma Manoudi

Article DOI: 10.30574/wjarr.2023.18.3.1087
<https://doi.org/10.30574/wjarr.2023.18.3.1087>

[View Abstract](#)

[Download PDF](#)

The interaction between neuroendocrine and immune systems in infants and children during under nutrition

Ashraf Sollman, Nada Alsaaraj, Doaa K Yassin, Alan D. Rogol

Article DOI: 10.30574/wjarr.2023.18.3.1104 DOI url:
<https://doi.org/10.30574/wjarr.2023.18.3.1104>

[View Abstract](#)
[Download PDF](#)

Children in-conflict chatbot system using natural language processing technique

Paolo Miguel Romilla, Jayson Matuguinas, Arvidaz Jandale Santiago, Criselle Centeno, Ariel Antwaun Rolando Sison, Mark Anthony Mercado

Article DOI: 10.30574/wjarr.2023.18.3.1107 DOI url:
<https://doi.org/10.30574/wjarr.2023.18.3.1107>

[View Abstract](#)
[Download PDF](#)

Assessment of physiochemical properties and bacteriological diversity of Otamiri river in Owerri eastern Nigeri

Ngazi Frank-Ogu, Jude Nnama Ogbulie, Sylvester Ifunanya Okorodu, Campbell Akujobi

Article DOI: 10.30574/wjarr.2023.18.3.0952 DOI url:
<https://doi.org/10.30574/wjarr.2023.18.3.0952>

[View Abstract](#)
[Download PDF](#)

Associated risk factors of renal failure among patients attending Hemodialysis center at Al-Thwara Authority Hospital in IBB city, Yemen: A cross sectional study

Sadiq Kaid Al-Mohani, Raafat Hamoud Abdo Al-Awadi, Malak Essa Tajaldeen, Aisha Mohammad Al-Mogammer, Mosa Mohammed Al-Shaghdari, Osama Foud Alshopi, Basem Mohammed Al-Rymani

Article DOI: 10.30574/wjarr.2023.18.3.1038 DOI url:
<https://doi.org/10.30574/wjarr.2023.18.3.1038>

[View Abstract](#)
[Download PDF](#)

Essential thrombocythemia masked by vitamin B 12 deficiency megaloblastic anemia: A case report

Yasmina Benhalima, Benmoussa Amine, Fatima Ezzahra Lahlimi, Ilias Tazi

Article DOI: 10.30574/wjarr.2023.18.3.1095 DOI url:
<https://doi.org/10.30574/wjarr.2023.18.3.1095>

[View Abstract](#)
[Download PDF](#)

Effect of extrinsic reward system on employee's productivity in deposit money banks in Nigeria

Iyke-Ofoedu Maureen Ifeoma, Nwankwo Ernest Chukwuebuka, Okechukwu Stanley Chidinna

Article DOI: 10.30574/wjarr.2023.18.3.1092 DOI url:
<https://doi.org/10.30574/wjarr.2023.18.3.1092>

[View Abstract](#)
[Download PDF](#)

Analysis of the relationship between Good Corporate Governance (GCG) and financial performance before and after the covid 19 pandemic in pharmaceutical companies going public

Nurul Amalia Nandasarfi, Ngatno, Hari Susanta Nugraha

Article DOI: 10.30574/wjarr.2023.18.3.1080 DOI url:
<https://doi.org/10.30574/wjarr.2023.18.3.1080>

[View Abstract](#)
[Download PDF](#)

How government expenditures and economic growth works on labor absorption

Gede Santanu, Kadek Dian Jati Wardani

Article DOI: 10.30574/wjarr.2023.18.3.1076 DOI url:
<https://doi.org/10.30574/wjarr.2023.18.3.1076>

[View Abstract](#)
[Download PDF](#)

Workplace learning in an effort to get recognition of Indonesian qualifications framework for career enhancement and employee competitiveness

Mada Aditia Wardhana, Ida Aju Brahmasari, Ida Aju Brahma Ratih

Article DOI: 10.30574/vjarr.2023.18.3.1094 DOI url: <https://doi.org/10.30574/vjarr.2023.18.3.1094>

[View Abstract](#)

[Download PDF](#)

Analysis of community perspectives regarding the hygiene-sanitation and socio-economic factors influencing the occurrence of diarrhea in toddlers: A literature review

Arij Salsabila, Pradita Setiawan

Article DOI: 10.30574/vjarr.2023.18.3.1085 DOI url: <https://doi.org/10.30574/vjarr.2023.18.3.1085>

[View Abstract](#)

[Download PDF](#)

The Relationship between the growth in Automated Teller Machine (ATM) terminal and values of ATM services in Nigeria

Umar Halidi Ahmad

Article DOI: 10.30574/vjarr.2023.18.3.1108 DOI url: <https://doi.org/10.30574/vjarr.2023.18.3.1108>

[View Abstract](#)

[Download PDF](#)

EEG workload estimation for simultaneous task using deep learning algorithm

Ariful Islam, Imran Hossain, Tofail Ahmed, Humaun Kabir, Sujit Roy

Article DOI: 10.30574/vjarr.2023.18.3.1142 DOI url: <https://doi.org/10.30574/vjarr.2023.18.3.1142>

[View Abstract](#)

[Download PDF](#)

KaSAYSAYan: The integration of Philippine history as an interactive and informative mobile game application using unity game engine

CENTENO CRISSELLE J, MASANGKAY MIGUEL T, MENDOZA HANNAH ROSE S, MERCADO MARK ANTHONY S, NULUD MARY GRACE D, PACHECO MA SOFIA I

Article DOI: 10.30574/vjarr.2023.18.3.1105 DOI url: <https://doi.org/10.30574/vjarr.2023.18.3.1105>

[View Abstract](#)

[Download PDF](#)

Specificity of cellular communication, from signal to functional response

Bruno Riccardi

Article DOI: 10.30574/vjarr.2023.18.3.1093 DOI url: <https://doi.org/10.30574/vjarr.2023.18.3.1093>

[View Abstract](#)

[Download PDF](#)

PE-M: Prediction of malnutrition of Barangay 35 Tondo Manila using random forest algorithm

Nathaniel David Martinez Alcantara, Louis Angelo Briones Arenque, Jhonniel Zafra Sical

Article DOI: 10.30574/vjarr.2023.18.3.1130 DOI url: <https://doi.org/10.30574/vjarr.2023.18.3.1130>

[View Abstract](#)

[Download PDF](#)

Comparison of Gravoply plate barcode embedding in Complete Denture Prosthesis (CDP) to lamination barcode embedding for forensic identification purposes

Basma Rosandi Prakosa, Radon Aditya Wisnu Wardhana, Annisa Putri, Emy Khuironi, Wahyu Agung Pramukti

Article DOI: 10.30574/vjarr.2023.18.3.1122 DOI url: <https://doi.org/10.30574/vjarr.2023.18.3.1122>

[View Abstract](#)

[Download PDF](#)

Addison's disease with marfanoid features

AKSHATA T C, N K KAALAPPANAVAR

Article DOI: 10.30574/vjarr.2023.18.3.0440 DOI url: <https://doi.org/10.30574/vjarr.2023.18.3.0440>

[View Abstract](#)[Download PDF](#)

Dynamically selected watermark insertion using machine learning

Soppari, Kavitha, T Sri Vinay, G Sai Teja, P H Rohith

Article DOI: 10.30574/wjarr.2023.18.3.1078 DOI url: <https://doi.org/10.30574/wjarr.2023.18.3.1078>

[View Abstract](#)[Download PDF](#)

Comparison of the effectiveness of giving warm compresses and cold compresses in handling dysmenorrhea: Systematic review

Melania Safitri, Ratna Dwi Jayanti, Endyka Eryo Frety

Article DOI: 10.30574/wjarr.2023.18.3.1096 DOI url: <https://doi.org/10.30574/wjarr.2023.18.3.1096>

[View Abstract](#)[Download PDF](#)

Breastfeeding in peripartum cardiomyopathy mothers: A systematic review

Dike Izza Maulsadianovi, Fatimah Zahra Almahur

Article DOI: 10.30574/wjarr.2023.18.3.1127 DOI url: <https://doi.org/10.30574/wjarr.2023.18.3.1127>

[View Abstract](#)[Download PDF](#)

The Polopalo cultural art learning revitalization model at Junior High Schools in Bone Bolango, Gorontalo Province

La Ode Karlan, Asna Aneta, Evi P. Hulukati, Novianty Djafri

Article DOI: 10.30574/wjarr.2023.18.3.1084 DOI url: <https://doi.org/10.30574/wjarr.2023.18.3.1084>

[View Abstract](#)[Download PDF](#)

Experience with Lipoabdominoplasty in a cosmetic surgery center in southern Nigeria

Kingsley Okechukwu Opara, Anthony Onyekachi Uzoho, Stanley Aham Okoro

Article DOI: 10.30574/wjarr.2023.18.3.1083 DOI url: <https://doi.org/10.30574/wjarr.2023.18.3.1083>

[View Abstract](#)[Download PDF](#)

The future of work: AI, automation, and the changing dynamics of developed economies

Mohd Faishal, Saju Mathew, Kelengol Neikha, Khriemenuo Pusa, Tonoli Zhimomi

Article DOI: 10.30574/wjarr.2023.18.3.1086 DOI url: <https://doi.org/10.30574/wjarr.2023.18.3.1086>

[View Abstract](#)[Download PDF](#)

Exploring the influence of profitability analysis on SME financing: A conceptual view

Shahad Tahseen Mohammed Ali

Article DOI: 10.30574/wjarr.2023.18.3.0966 DOI url: <https://doi.org/10.30574/wjarr.2023.18.3.0966>

[View Abstract](#)[Download PDF](#)

Modelling of bulk modulus from sand [API <75]-shale [API >75] lithology for XA field in the Niger Delta Basin

Atat JG, Esslett AA, Ekpo SS, Umar S

Article DOI: 10.30574/wjarr.2023.18.3.1018 DOI url: <https://doi.org/10.30574/wjarr.2023.18.3.1018>

[View Abstract](#)[Download PDF](#)

The effect of bokashi fertilizer from agricultural waste contain Trichoderma to improve soybean production, growth, and resistance against plant diseases

Gusnawaty HS, Muhammad Taufik, Novita Pramahsari Putri

Article DOI: 10.30574/wjarr.2023.18.3.0965 DOI url: <https://doi.org/10.30574/wjarr.2023.18.3.0965>

[View Abstract](#)

[Download PDF](#)

Road construction analysis using regression technique

JHERIMAE C. ANCHETA, PRIMO IVAN D. LAZO, LLOVELYN B. MEDINA,
CRISELLE J. CENTENO, ARIEL ANTWAUN ROLANDO C. SISON, MARK
ANTHONY S. MERCADO

Article DOI: 10.30574/vjarr.2023.18.3.1125 DOI url:
<https://doi.org/10.30574/vjarr.2023.18.3.1125>

[View Abstract](#)[Download PDF](#)

Relationship between Scabies and Quality of Life in Islamic Boarding School X Surabaya

Audhia Rizqita Salsabilla, Zulfa Labibah

Article DOI: 10.30574/vjarr.2023.18.3.0993 DOI url:
<https://doi.org/10.30574/vjarr.2023.18.3.0993>

[View Abstract](#)[Download PDF](#)

Big data and machine learning and the impact on education

Panagiotis Leliopoulos, Sotiris Stavridis, Athanasios Drigas

Article DOI: 10.30574/vjarr.2023.18.3.1054 DOI url:
<https://doi.org/10.30574/vjarr.2023.18.3.1054>

[View Abstract](#)[Download PDF](#)

Monocytic HLA-DR expression in type 2 diabetes mellitus: Impact on disease susceptibility

Dyahati Wahyurini, Heri Wibowo

Article DOI: 10.30574/vjarr.2023.18.3.1115 DOI url:
<https://doi.org/10.30574/vjarr.2023.18.3.1115>

[View Abstract](#)[Download PDF](#)

The Relationship between Individual Characteristics, Work Shift and Mental Workload with Work Fatigue in Nurses at Wava

Husada Hospital

Meytri Dinda Mustika

Article DOI: 10.30574/vjarr.2023.18.3.1116 DOI url:
<https://doi.org/10.30574/vjarr.2023.18.3.1116>

[View Abstract](#)[Download PDF](#)

Examining the influence of sibling structure on academic performance: A comparative study of younger and elder siblings

Felix. C. Aguboshim, Obinna. O. Otuu

Article DOI: 10.30574/vjarr.2023.18.3.1131 DOI url:
<https://doi.org/10.30574/vjarr.2023.18.3.1131>

[View Abstract](#)[Download PDF](#)

A systematic review of the linkages between corporate governance systems and procurement practices in public procurement entities

Manpaya M, Owusu-Manu D, Balden BK, Edwards DJ, Ashayeri I

Article DOI: 10.30574/vjarr.2023.18.3.1173 DOI url:
<https://doi.org/10.30574/vjarr.2023.18.3.1173>

[View Abstract](#)[Download PDF](#)

The historical role of scholars and public intellectuals in Uganda's post-independence politics: A critical study of the gang of four

Serunjogi Charles Dickens

Article DOI: 10.30574/vjarr.2023.18.3.1103 DOI url:
<https://doi.org/10.30574/vjarr.2023.18.3.1103>

[View Abstract](#)[Download PDF](#)

The role of maternal serum alpha-fetoprotein in preterm birth: A literature review

Sophia Zahra, Mahendra Tri Arif Sampurna, Aditiawarman

Article DOI: 10.30574/vjarr.2023.18.3.1158

DOI url: <https://doi.org/10.30574/wjarr.2023.18.3.1158>[View Abstract](#)[Download PDF](#)

Diagnosis and treatment of Combined Pulmonary Fibrosis and Emphysema (CPFE)

Made Agustya Darma Putra WesnawaArticle DOI: [10.30574/wjarr.2023.18.3.1147](https://doi.org/10.30574/wjarr.2023.18.3.1147) DOI url: <https://doi.org/10.30574/wjarr.2023.18.3.1147>[View Abstract](#)[Download PDF](#)

State of the art of biological thickness in deep margin restorations

Antonella Nicole López, Milton Fabricio Lafebre, Miriam Nataly RamónArticle DOI: [10.30574/wjarr.2023.18.3.1109](https://doi.org/10.30574/wjarr.2023.18.3.1109) DOI url: <https://doi.org/10.30574/wjarr.2023.18.3.1109>[View Abstract](#)[Download PDF](#)

The impact of experiencing sexual violence against women in Sidoarjo city

Septishiya Tri Charisma DewiArticle DOI: [10.30574/wjarr.2023.18.3.1143](https://doi.org/10.30574/wjarr.2023.18.3.1143) DOI url: <https://doi.org/10.30574/wjarr.2023.18.3.1143>[View Abstract](#)[Download PDF](#)

Application of chitosan-gelatin-carbonate hydroxy apatite scaffold toward the number of osteoblasts in alveolar bone defects in Wistar Rats

Devi Rianti, Noor Zain Salsabilla Prabowo, Maryama Aflaha, Tittien Hary Agustantina, Adriansyah syahromArticle DOI: [10.30574/wjarr.2023.18.3.0840](https://doi.org/10.30574/wjarr.2023.18.3.0840) DOI url: <https://doi.org/10.30574/wjarr.2023.18.3.0840>[View Abstract](#)[Download PDF](#)

Hippocampal Volumetry among Sudanese Patients attending Elmoalem Hospital, Sudan; structural MRI study (2021-2022)

Omer Taha Ahmed Elmukashfi, Taha Ahmed Elmukashfi Eishelkh, Eishelkh Aljayli Taha Ahmed Elmukashfi, Mohamed AbdelSalam NureinArticle DOI: [10.30574/wjarr.2023.18.3.1128](https://doi.org/10.30574/wjarr.2023.18.3.1128) DOI url: <https://doi.org/10.30574/wjarr.2023.18.3.1128>[View Abstract](#)[Download PDF](#)

Hypophyseal acetylcholinesterase, and growth hormones of broiler chicken fed Ficus carica and vitamin C supplemented diets

David Olawale Ayodele, Clement Oluwafemi Osowe, Olufemi Adesanya Adu, Clifford Adinma ChinekeArticle DOI: [10.30574/wjarr.2023.18.3.1117](https://doi.org/10.30574/wjarr.2023.18.3.1117) DOI url: <https://doi.org/10.30574/wjarr.2023.18.3.1117>[View Abstract](#)[Download PDF](#)

eISSN: 2581-9615

CODEN(USA): WJARAI

Impact Factor 7.8

GIF

Value 90.12

World Journal of Advanced Research and Reviews (WJARR) is licensed under a Creative Commons Attribution-NonCommercial-ShareAlike 4.0 International license. Permissions beyond the scope of this license may be available at www.wjarr.com This site can be best viewed in modern browser like Google chrome.

Copyright © 2023, World Journal of Advanced Research and Reviews

Designed by [VS Infosolution](#)

The effect of *Abelmoschus esculentus* pods ethanol extract on mice (*Mus musculus*) preantral follicle, antral follicle, and corpus luteum numbers exposed to carbon black

Mohamad Raviansyah Jawindra, Widjiati Widjiati, Yeni Dhamayanti, Tita Damayanti Lestari, Eduardus Bimo Aksono Herupradoto, Rochmah Kurnijasanti and Hani Plumeriastuti *

Department of Veterinary Medicine, Faculty of Veterinary Medicine, Universitas Airlangga, Campus C, Mulyorejo, Surabaya, Indonesia.

World Journal of Advanced Research and Reviews, 2023, 18(03), 807–814

Publication history: Received on 04 May 2023; revised on 15 June 2023; accepted on 17 June 2023

Article DOI: <https://doi.org/10.30574/wjarr.2023.18.3.1141>

Abstract

Introduction: This study aims to determine the preventive effect of okra (*Abelmoschus esculentus*) pods ethanol extract on the mice (*Mus musculus*) preantral follicle, antral follicle, and corpus luteum numbers exposed to carbon black.

Material and Methods: This study used 25 mice which were divided into 5 groups. The negative control group (C-) and the positive control group (C+) were given Na-CMC 0.5% solution orally, while the treatments groups T1, T2, and T3 were pretreated with okra pods ethanol extract orally with a dose of 4 mg/20gBW, 8mg/20gBW and 16 mg/20gBW. Later the C+, T1, T2, and T3 were exposed to 1064 mg/m³ carbon black for 6 hours/day for 30 days.

Results: The results of the study showed that there was a significant difference between control group C- (18.20^c±2.28; 11.20^d±0.83), C+ (8.60^a±1.14; 5.00^a±1.00), treatment group T1 (12.60^b±2.70; 8.00^b±1.22), T2 (15.20^{bc}±4.76; 8.80^{bc}±2.04) and T3 (17.80^c±2.77; 9.80^{cd}±0.83) (p<0.05) in ovarian preantral and antral follicle numbers, while there was not shown any significant difference between the corpus luteum numbers (p>0.05) in all treatment groups.

Conclusion: It can be concluded that okra pods (*Abelmoschus esculentus*) ethanol extract can maintain the preantral and antral follicle numbers in mice exposed to carbon black.

Keywords: Carbon Black; Okra; Ovarian Follicles; Reproductive Health

1. Introduction

One of the health problems that occur around us is air pollution. Hendrawan et al. [10] stated that sources of air pollution possibly come from various activities, including industry, transportation, and housing, as well as various natural disasters, such as forest fires, volcanic eruptions, and toxic natural gas. Air pollution that comes from various sources can be in the form of particles of dust, gas, lead, and combustion products called Particulate Matter (PM). One of the main particles of PM is in the form of carbonaceous particles, which is known as carbon black.

Carbon black is one of the aerodynamic particles measuring 0.1 μm (100 nm) or less that enters through the respiratory tract and can penetrate the alveolar-capillary, thus being distributed throughout the body through the circulatory system

* Corresponding author: Hani Plumeriastuti .

[14]. Niranjana and Thakur [19] mentioned that carbon black particles can induce an increase in inflammatory cytokines in the body. The amount of carbon black deposited in the lungs can increase Reactive Oxygen Species (ROS) production [10]. Niwa et al. [20] and Li et al. [16] explained carbon black in the lungs causes mitochondrial abnormalities in alveolar macrophages and alveolar epithelial cells, leading to increase ROS production. Proinflammatory cytokines and increased intracellular ROS are released into the bloodstream and cause systemic disturbances.

Agarwal et al. [2] explained that an increase in ROS production may result in oxidative stress in the body. Oxidative stress can cause various health problems and is known to harm women's reproductive health. Further PM exposure also affects women's reproductive health and is closely related to the process of folliculogenesis. The research of Luderer et al. [18] concluded that exposure to PM resulted in a reduction in the number of developing follicles, inducing cell death due to DNA damage and increased cell apoptosis. Previous studies on PM exposure to ovarian function and folliculogenesis in mice have shown a decrease in fertility, an increase in the incidence of irregular estrous cycles, and a reduction in the number of follicles [26].

Abelmoschus esculentus is known to have many health benefits. The *A. esculentus* plant belongs to the Malvaceae family originating from Africa but has been widely planted in other areas such as Asia, Southern Europe, and America with tropical, subtropical, and warm climates. All parts of this plant have various uses, with the main part often used being the pods [5]. *Abelmoschus esculentus* pods and seeds contain flavonoid active ingredients such as procyanidin B2, procyanidin B1, rutin, quercetin, catechin, and epicatechin which function as antioxidants [12]. Shui and Peng [25] reported about 70% of the antioxidant effect of *A. esculentus* in the form of quercetin. Quercetin can reduce oxidative stress conditions and induce antioxidant enzymes in the body [13].

The antioxidant effect in *A. esculentus* is expected to prevent the production of ROS in the body exposed to carbon black. Therefore, the study was conducted to observe the effect of *A. esculentus* in preventing oxidative stress caused by exposure to carbon black and maintaining the number of preantral-antral follicles in the ovaries.

2. Material and methods

2.1. Sample and materials

The study used 25 female mice (*Mus musculus*), aged 8 weeks with 20-25 grams bodyweight and obtained from a Rat-mice breeder. The Materials for daily mice maintenance are water given ad libitum and feed in the form of Hi-Pro-Vite Medicated pellets 594. The materials for treatment are *A. esculentus* pods ethanol extract and carbon black. The *A. esculentus* pods were obtained from farmers in Ngemplak Village, Sambikerep District, Surabaya City, East Java, Indonesia. The *A. esculentus* pods were extracted by maceration method using 96% ethanol solution with three levels of preventive doses. The carbon black exposure used the Vulcan N330 and Carbon Black Inhalation Chamber as the inductor.

2.2. Experimental design

This study used an experimental principle, by applying the Completely Random Design (CRD) method. Mice were divided into 5 treatment groups, where each group consisted of 5 mice and then acclimatized for 7 days in a homogeneous state. Then, a vaginal smear of the mice was conducted to determine the estrous cycle of the mice [1]. The negative control (C-) group was given Na-CMC 0.5% solution (Aquadest added with Na-CMC 0.5% powder) orally without being exposed to carbon black and the positive control (C+) group was given Na-CMC 0.5% solution (Aquadest added with Na-CMC 0.5% powder) orally and exposed to carbon black. Based on Shintaningrum [24], the dose of *A. esculentus* pods ethanol extract was divided into Treatment 1 (T1), Treatment 2 (T2), and Treatment 3 (T3). Each group was given *A. esculentus* pods ethanol extract at doses of 4mg/20gBW, 8mg/20gBW, and 16mg/20gBW orally. The C+, T1, T2, and T3 groups were then exposed to carbon black at a dose of 1064mg/m³ [11] and inhaled 6 hours/day for 30 days.

2.3. Histopathological examination

On the 31st day, the mice were then euthanized, and the ovarium samples were collected to be made for histopathological preparation using Hematoxylin-Eosin (HE) staining. The histopathological preparations were observed using Nikon Eclipse E-100 using a 100x magnification microscope equipped with an optical camera connected to a computer. The counting is manually done with the Image Raster Application on the computer. Five different fields of view were taken by image using

the computer and were calculated. The calculation was done by identifying the number of preantral follicles, antral follicles, and corpus luteum.

Preantral follicles consist of primary and secondary follicles. The primary follicle is an oocyte surrounded by a layer of cuboid granulosa cells. The secondary follicle is an oocyte covered by a few layers of cuboid granulosa cells. Antral follicles consist of tertiary and de Graaf follicles. The tertiary follicle is an oocyte covered by granulosa cells and begins to form an antrum filled with follicular fluid which are called Call-Exner bodies. Graafian follicle is an oocyte that has begun to pull over to one side, surrounded by cumulus oophorus, heca interna and theca externa cells, and corona radiata, and has a wider antrum compared to the tertiary follicle. The Corpus luteum is a structure composed of theca lutein cells and lutein cells, originating from ovulated Graafian follicles [9, 7].

2.4. Statistical analysis

The data was analyzed using Statistical Product and Service Solution (SPSS). Data on the number of follicles from the five treatment groups were analyzed using descriptive statistical tests, different tests using one-way ANOVA, and Duncan's test with a significance of 0.05.

3. Results and discussion

The data was gathered by examining the histopathological preparations of the mice ovaries (*Mus musculus*). The variables observed were preantral follicles (primary and secondary follicles), antral follicles (tertiary and Graafian follicles), and corpus luteum (Figure 1). Histopathological assessment was performed on five different visual fields for each variable in one preparation. The average value and Standard Deviation (SD) are shown in Table 1 and Figure 2.

The results showed the calculation of preantral follicle, antral follicle, and corpus luteum numbers. One-way ANOVA analysis of the number of preantral and antral follicles showed a significant difference ($p < 0.05$). Table 1 showed Duncan's analysis, where it was shown that all treatments have significantly different results ($p < 0.05$) between groups C- (18.20 ± 2.28 and 11.20 ± 0.83), C+ (8.60 ± 1.14 and 5.00 ± 1.00), T1 (12.60 ± 2.70 and 8.00 ± 1.22), and T2 (15.20 ± 4.76 and 8.80 ± 2.04) on the number of preantral and antral follicles. The C- (18.20 ± 2.28 and 11.20 ± 0.83) and C+ group (8.60 ± 1.14 and 5.00 ± 1.00) showed significant differences between each other ($p < 0.05$) indicating there is an effect of carbon black exposure to the number of the preantral and antral follicle, but showed no significant difference ($p > 0.05$) between groups T3 (17.80 ± 2.77 and 9.80 ± 0.83) and C- (18.20 ± 2.28 and 11.20 ± 0.83). For the number of corpus luteum, it was found that there was no significant difference ($p > 0.05$) between all treatment groups, but the C+ (2.80 ± 0.83) group has the lowest average number compared to the other treatment groups.

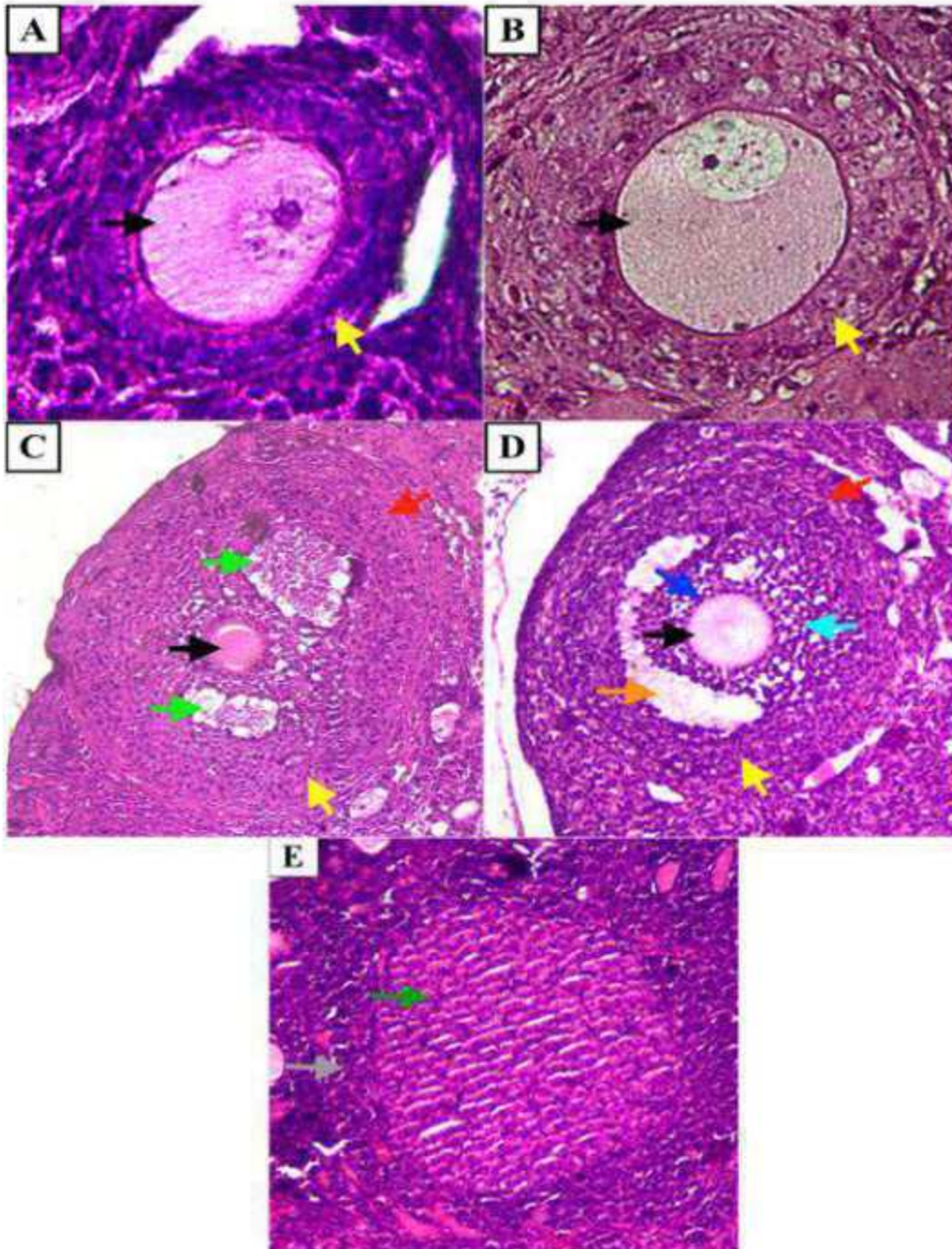


Figure 1 Follicle identification ovarian histopathology of mice (*Mus musculus*) which was given *A. esculentus* pods ethanol extract as preventive medicine against exposure to carbon black with HE staining. Preantral follicle (A: primary follicle; B: secondary follicle; 400x magnification), Antral follicle (C: tertiary follicle; D: Graafian follicle; 100x magnification), and corpus luteum (E: 100x magnification). Black arrows show oocytes, yellow arrows show granulosa cell membrane, light green arrows show Call-Exner bodies, red arrows show corona radiata, orange arrows show follicular antrum, dark green arrows show lutein cells and grey arrows show theca lutein cells.

Table 1 The average preantral follicle, antral follicle, and corpus luteum numbers in each group (Mean \pm SD).

Group	Preantral Follicle Number (Mean \pm SD)	Antral Follicle Number (Mean \pm SD)	Corpus Luteum Number (Mean \pm SD)
C-	18.20 ^c \pm 2.28	11.20 ^d \pm 0.83	7.40 ^a \pm 3.64
C+	8.60 ^a \pm 1.14	5.00 ^a \pm 1.00	2.80 ^a \pm 0.83
T1	12.60 ^b \pm 2.70	8.00 ^b \pm 1.22	7.20 ^a \pm 3.96
T2	15.20 ^{bc} \pm 4.76	8.80 ^{bc} \pm 2.04	5.60 ^a \pm 4.61
T3	17.80 ^c \pm 2.77	9.80 ^{cd} \pm 0.83	6.20 ^a \pm 4.08

Notes: different superscripts in one column showed significant differences ($p < 0.05$).

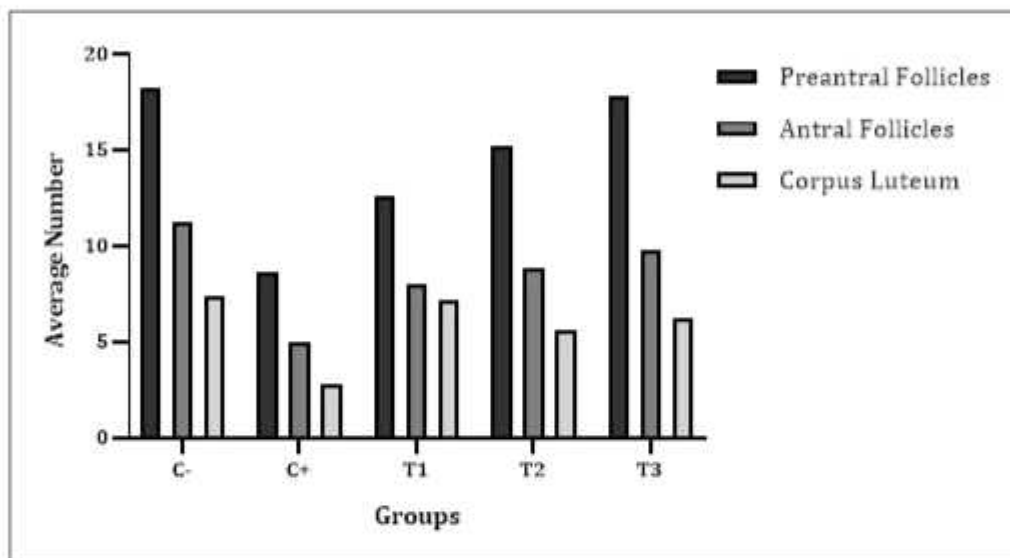


Figure 2 Bar chart of the mean number of preantral follicles, antral follicles, and corpus luteum in 5 groups of mice (*Mus musculus*).

From Figure 2, the graphic of preantral and antral follicle numbers shows a decrease between the C- and C+ groups, while showing an increase after the treatment of *A. esculentus* pods ethanol extract with three levels of doses (T1, T2, and T3). The graphic of the corpus luteum numbers showed that the C+ group was also having the lowest graphic average number (2.80 ± 0.83), followed by the T2 group (5.60 ± 4.61), T3 group (6.20 ± 4.08), T1 group (7.20 ± 3.96), and C- group (7.40 ± 3.64) as the highest corpus luteum average number.

The preantral follicles are known to be gonadotropin independent, in which the growth and the differentiation of the follicles are affected by growth factors such as Transforming Growth Factor- β (TGF- β) superfamily and Insulin-like Growth Factor 1 (IGF-1). These growth factors stimulate the recruitment of primordial follicles to differentiate into preantral follicles and also stimulates the proliferation of granulosa cells. While undergoing the transition to antral follicles, many of the growing follicles died and formed atretic follicles.

The antral follicles are gonadotropin dependent, marked by the rapid growth of their size affected by the Follicle Stimulating Hormone (FSH), Luteinizing Hormone (LH), and other growth factors which would affect the gonadotropin activities. Estrogen will mainly be produced inside the transitioning antral follicles, and forming the antral cavities which would increase the size of antral follicles. This explained that in the result, only the preantral (Primary and secondary) follicles undergo a significant increase in number, while the antral (tertiary and de Graaf) follicles undergo an increase in size [1, 27]. Increased LH production will eventually make the ovulation happen inside the ovary, thus leaving behind a structure called corpus luteum [7].

The corpus luteum numbers in all groups are shown to be insignificantly different from each other's but showed a decrease in the average number of C+ group if compared to other groups. The decrease happened because the preantral and antral follicles in the C+ group showed a significant decrease following the carbon black exposure, thus having a lower follicle number to be ovulated if compared to the C- group (without the exposure of carbon black) and the treatment groups (T1, T2, and T3).

Based on research by Niwa et al. [20] and Li et al. [16], The interaction between carbon black and cells in the lungs will trigger an inflammatory response in the body. The occurring inflammatory response is the secretion of pro-inflammatory cytokines IL-1 β and IL-8 in the bronchiolar epithelium. Continued exposure might affect the secretion of other inflammatory marker proteins such as MPC-1, IL-6, and CRP, which will also increase circulation. This inflammatory response will increase the production of TNF- α , which induces the release of ROS in mitochondrial cells. Lu et al. [17] stated that excessive ROS production causes an imbalance between oxidation and antioxidants, causing oxidative stress in the body. As the carbon black exposure continued, the inflammation responses and the production of ROS will also continue. The decrease in the follicle number has been stated in the study of Luderer et al. [18], in which ROS adversely affects folliculogenesis and increases the risk of infertility.

Granulosa cells strongly influence the development of follicles in the ovary. The granulosa cells are known to be the receptor of FSH and LH from the bloodstream, regulating the release of estrogen hormone, the formation of the corpus luteum, and nurse cells that provide nutrition to oocytes inside the ovarium [7]. The release of the inflammatory responses and ROS is known to affect the integrity of cell membranes, reducing cell viability, and eventually leading to cell death [19, 4]. Luderer et al. [18] also stated that oxidative stress will eventually cause the death of granulosa cells, leading to oocyte death caused by apoptosis and the follicle will degenerate into an atretic follicle. Cell death is caused by the activation of caspase-3 in the ovary. Caspase-3 is known to be a major caspase in the regulation of cell apoptosis [27]. The decrease in follicular number in all treatments exposed to carbon black may also cause a decrease in the formation of the corpus luteum, following the decrease in the antral follicle, and thus having lesser mature oocytes to be ovulated.

Abelmoschus esculentus pods are known to have many benefits, including as an anti-inflammatory and antioxidant). About 70% of the antioxidant activity of *A. esculentus* comes from quercetin (a type of flavonoid) [25]. Granado-Serrano et al. [8] explained that quercetin can interact with cellular defense systems and induce antioxidant enzymes and Glutathione (GSH). Induction of the release of antioxidant enzymes and glutathione in the body can counter the increase in ROS production in the body and keep levels low. In addition, Quercetin can bind directly to ROS [23]. Li et al. [15] explained that quercetin, as a major active substance in the *A. esculentus* pods, inhibits the release of pro-inflammatory cytokines by inhibiting the lipopolysaccharide-Induced TNF- α production in the macrophage.

Flavonoid content in *A. esculentus* can also give an antioxidant effect by inhibiting the excess production of ROS, directly scavenging ROS, or indirectly increasing endogenous antioxidant enzymes [3]. *Abelmoschus esculentus* extract contains various antioxidant compounds such as flavonoids, quercetin, and phenolic acids that can donate H⁺ from antioxidant compounds to ROS compounds [6]. Yang et al. [28] mentioned that quercetin may inhibit the activation of caspase-9 and caspase-3 from endoplasmic reticulum stress of buffalo ovarian granulosa cells and reduce ROS activities. Rashidi et al. [22] explained that quercetin could reduce apoptosis of granulosa cells through Nuclear Factor (erythroid-derived 2)-like 2 (Nrf2)/Antioxidant Response Element (ARE) pathway and Thioredoxin (Trx) system. Nrf2 is a key regulator of phase II antioxidant enzyme expression through binding to the ARE. In the normal states, Nrf2 is disabled in the cytosol by binding to Kelch-like ECH-Associated Protein 1 (Keap1). But the Keap1-Nrf2 complex is separated under oxidative stress and Nrf2 is transferred into the nucleus where it connects to the ARE region. It was reported before that quercetin stimulates Nrf2-mediated ARE activity and cytoprotective genes.

4. Conclusion

The studies above can explain that the bar chart of the T1, T2, and T3 treatment group seems to have an increase in both preantral follicle, antral follicle, and corpus luteum numbers and maintain their healthy count when compared to the C+ group. The Conclusion showed that *Abelmoschus esculentus* pods ethanol extract administration can maintain the number of preantral follicles, antral follicles, and corpus luteum of mice (*Mus musculus*) exposed to carbon black. Further studies are needed to explain more about the adverse effect of *Abelmoschus esculentus* pods ethanol extract's active components as the exact mechanism are still poorly understood.

Compliance with ethical standards

Acknowledgments

The authors express their gratitude to Dr. Annise Proboningrat, DVM., M.Sc. for editing the final manuscript.

Disclosure of conflict of interest

All authors declare no conflict of interest in the manuscript.

Statement of ethical approval

The research was conducted appropriately following the ethics in using experimental animals and has been approved by the ethics committee of the Faculty of Veterinary Medicine, Universitas Airlangga, No. 1.KE.138.12.2021 on 12th December 2021.

References

- [1] Abdullah, A., T. I. Restiadi., N. D. R. Lastuti., T. Damayanti., and E. Safitri. 2017. Insulin-Like Growth Factor-I (IGF-I) from Crossbred Pregnant Mare Serum to Increase Follicle Number of Mice (*Mus musculus*). *KnE Life Sciences*, 658-667.
- [2] Agarwal, A., S. Gupta., and R.K. Sharma. 2015. Role of oxidative stress in female reproduction. *Reproductive biology and endocrinology*, 3(1): 1-21.
- [3] Akhlaghi, M. and B. Bandy. 2009. Mechanisms of Flavonoid Protection Against Myocardial Ischemia-Reperfusion Injury. *Journal of Molecular and Cellular Cardiology*, 46(3): 309- 317.
- [4] de Almeida Rodolphoa, J. M., K. F. de Godoy., P. Brassolatti., B. D. de Lima Fragelli., C. A. de Castro., M. Assis., and F. de Freitas Anibal. 2021. Apoptosis and Oxidative Stress Triggered by Carbon Black Nanoparticle In The LA-9 Fibroblast. *Cell Physiol Biochem*, 55: 364-377.
- [5] Durazzo, A., M. Lucarini., E. Novellino., E.B. Souto., P. Daliu., and A. Santini. 2018. *Abelmoschus esculentus* (L.): Bioactive Components' Beneficial Properties-Focused on Antidiabetic Role-For Sustainable Health Applications. *Molecules*, Basel, Switzerland, 24(1). Vol: 38.
- [6] Flora, G., D. Gupta., and A. Tiwari. 2012. Toxicity of Lead: A Review with Recent Updates. *Interdisciplinary toxicology*, 5(2): 47-58.
- [7] Goodman, H. M. 2009. Chapter 13: hormonal control of reproduction in the female: the menstrual cycle. *Basic medical endocrinology*, 257-275.
- [8] Granado-Serrano, A. B., M. A. Martín., L. Bravo, L. Goya, and S. Ramos. 2012. Quercetin modulates Nrf2 and glutathione-related defenses in HepG2 cells: Involvement of p38. *Chemico-Biological Interactions*, 195(2): 154-164.
- [9] Griffin, J., B. R. Emery., I. Huang., C. M. Peterson., and D. T. Carrell. 2006. Comparative analysis of follicle morphology and oocyte diameter in four mammalian species (mouse, hamster, pig, and human). *Journal of experimental and clinical assisted reproduction*, 3(1): 1-9.
- [10] Hendrawan, V. F., D. Wulansari., and Y. Oktanella. 2018. Effectiveness of chlorogenic acid supplementation on VEGF serum and placental MAP kinase expression in carbon Black- Exposed pregnant *Rattus norvegicus*. *Research Journal of Pharmacy and Technology*, 11(5): 1830-1834.
- [11] Juliprihanto, A., V. F. Hendrawan., D. Wulansari., Y. Oktanella., and Widjiati. 2019. Placental cells number and caspase-9 expression in white rat (*Rattus norvegicus*) apoptosis exposed with carbon black. *Research Journal of Pharmacy and Technology*, 12(4): 1935-1942.
- [12] Khomsug, P., W. Thongjaroenbuangam., N. Pakdeenarong., M. Suttajit., and P. Chantiratikul. 2010. Antioxidative Activities and Phenolic Content of Extracts from Okra (*Abelmoschus esculentus* L.). *Research Journal of Biological Sciences*, 5(4): 310-313.
- [13] Kobori, M., Y. Takahashi., Y. Akimoto., and M. Sakurai., I. Matsunaga., H. Nishimuro., K. Ippoushi., H. Oike., M. Ohnishi-Kameyama. 2015. Chronic high intake of quercetin reduces oxidative stress and induces expression of

the antioxidant enzymes in the liver and visceral adipose tissues in mice. *Journal of Functional Foods*. 15: 551-560.

- [14] Kwon, H., M. Ryu., and C. Carlsten. 2020. Ultrafine particles: unique physicochemical properties relevant to health and disease. *Experimental & Molecular Medicine*. 52.
- [15] Li, Y., J. Yao., C. Han., J. Yang., Chaudhry, M. T., Wang, S., and Yin, Y. 2016. Quercetin, inflammation, and immunity. *Nutrients*, 8(3): 167.
- [16] Li, Y., M. Yang., T. Meng., Y. Niu., Y. Dai., L. Zhang, X. Zhang., P. Jalava., G. Dong., W. Gao., and Y. Zheng. 2020. Oxidative stress induced by ultrafine carbon black particles can elicit apoptosis in vivo and vitro. *Science of The Total Environment*. 709. 135802.
- [17] Lu, J., Z. Wang., J. Cao., Y. Chen., and Y. Dong. 2018. A novel and compact review on the role of oxidative stress in female reproduction. *Reproductive Biology and Endocrinology*. 16(1): 1-18
- [18] Luderer, U., J. Lim., L. Ortiz., J.D. Nguyen., J.H. Shin., B.D. Allen., L.S. Liao., K. Malott., V. Perraud., L.M. Wingen., R.J. Arechavala., B. Bliss., D.A. Herman., and M.T. Kleinman. 2022. Exposure to environmentally relevant concentrations of ambient fine particulate matter (PM2.5) depletes the ovarian follicle reserve and causes sex-dependent cardiovascular changes in apolipoprotein E null mice. *Part Fibre Toxicol*. 19(1): 1-21.
- [19] Niranjana, R., and A. K. Thakur. 2017. The toxicological mechanisms of environmental soot (black carbon) and carbon black: focus on oxidative stress and inflammatory pathways. *Frontiers in immunology*. 8. 763.
- [20] Niwa, Y., Y. Hiura, H. Sawamura, and N. Iwai. 2008. Inhalation exposure to carbon black induces inflammatory response in rats. *Circulation Journal*, 72(1), 144-149.
- [21] Rajkovic, A., S. A. Pangas., and M. M. Matzuk. 2006. Follicular development: mouse, sheep, and human models. *Knobil and Neill's physiology of reproduction*, 1: 383-424.
- [22] Rashidi, Z., A. Aleyasin., M. Eslami., S. Nekoonam., A. Zendedel., M. Bahramrezaie., and F. Amidi. 2019. Quercetin protects human granulosa cells against oxidative stress via thioredoxin system. *Reproductive biology*, 19(3): 245-254.
- [23] Rashidi, Z., Z. Khosravizadeh., A. Talebi., K. Khodamoradi., R. Ebrahimi., and F. Amidi. 2021. Overview of biological effects of Quercetin on ovary. *Phytotherapy Research*, 35(1): 33- 49.
- [24] Shintaningrum, P., Rimayanti., dan W. Widjiati 2019. The Effect of OCRA (*Abelmoschus esculentus*) Ethanolic Extract on Leydig Cells in *Mus musculus*. *Indian Veterinary Journal*, 96(2), 19-20.
- [25] Shui, G., and L.L. Peng. 2004. An improved method for the analysis of major antioxidants of *Hibiscus esculentus* Linn. *Journal of Chromatography A*, 1048(1), 17–24.
- [26] Veras, M.M., N.R. Damaceno-Rodrigues., R.M. Guimarães Silva., J.N. Scoriza., S.P.H. Nascimento., C.E. Garcia., et al. 2009. Chronic exposure to fine particulate matter emitted by traffic affects reproductive and fetal outcomes in mice. *Environ Res*. 109:536- 43.
- [27] Widjiati, W., Faizah, Z., Darsini, N., Hendrawan, V. F., Karima, H. N., Chotimah, C., Sumitro, S. B., & Luqman, E. M. 2020. Identification of caspase 3 intensity in Kacang Goat oocyte post vitrification using confocal laser scanning microscopy. *Adv. Anim. Vet. Sci*, 8(12): 1362-1366.
- [28] Yang, W., R. Liu., Q. Sun., X. Huang., J. Zhang., L. Huang., and Q. Fu. 2022. Quercetin Alleviates Endoplasmic Reticulum Stress-Induced Apoptosis in Buffalo Ovarian Granulosa Cells. *Animals*, 12(6): 787.