

# Clinacanthus nutans L Extracts Reduce the Serum Tumor Necrosis Factor- $\alpha$ , Malondialdehyde, and Interleukin-6 Levels and Improve the Langerhans Islet Area in Diabetic Rat Models

*by Arifa Mustika*

---

**Submission date:** 11-Sep-2023 02:49PM (UTC+0800)

**Submission ID:** 2162928980

**File name:** Artikel\_Tambahan\_2.pdf (1M)

**Word count:** 5394

**Character count:** 30274

# *Clinacanthus nutans* L Extracts Reduce the Serum Tumor Necrosis Factor- $\alpha$ , Malondialdehyde, and Interleukin-6 Levels and Improve the Langerhans Islet Area in Diabetic Rat Models

Clinical Medicine Insights:  
Endocrinology and Diabetes  
Volume 16: 1–7  
© The Author(s) 2023  
Article reuse guidelines:  
sagepub.com/journals-permissions  
DOI: 10.1177/11795514231196462



Arifa Mustika<sup>1</sup>, Nurmawati Fatimah<sup>1</sup>, Indri Safitri<sup>2</sup>, Nurlaili Susanti<sup>3</sup> and Nurul Shahfiza Noor<sup>4</sup>

<sup>1</sup>Anatomy, Histology, and Pharmacology Department, Faculty of Medicine, Universitas Airlangga, Surabaya, East Java, Indonesia. <sup>2</sup>Biochemistry Department, Faculty of Medicine, Universitas Airlangga, Surabaya, East Java, Indonesia. <sup>3</sup>Biomedical Department, Faculty of Medicine and Health Science, Maulana Malik Ibrahim State Islamic University, Malang, East Java, Indonesia. <sup>4</sup>Toxicology Department, Advanced Medical and Dental Institute, Universiti Sains Malaysia, Kubang Kerian, Kelantan, Malaysia.

## ABSTRACT

**BACKGROUND:** Diabetes mellitus-induced hyperglycemia increases oxidative stress and inflammatory cytokine production, which play a significant role in the damage and apoptosis of pancreatic  $\beta$  cells. Therefore, the administration of medications that can reduce oxidative stress and inflammation plays an important role in diabetes treatment.

**OBJECTIVE:** To probe the *Clinacanthus nutans* leaf extract effect on oxidative stress and inflammatory markers and the Langerhans islet area in diabetic rat models.

**DESIGN:** An experimental laboratory in the animal model.

**METHODS:** Twenty-five diabetic rat models were randomly assigned into 5 clusters. Clusters 1, 2, and 3 were administered with *C. nutans* leaf extract in aqueous suspension with vehicle 1% Na-CMC at 75 mg/kg body weight (BW), 150 mg/kg BW, and 300 mg/kg BW, respectively. Cluster 4 was diabetic control rats administered with metformin at a 21 mg/rat dose. Cluster 5 was a control diabetic rat only administered with 1% Na-CMC suspension. Treatment was administered orally for 14 days. On the 15th day, the rats were sacrificed to obtain blood samples and pancreatic tissues. Serum interleukin (IL)-6, malondialdehyde (MDA), and tumor necrosis factor (TNF- $\alpha$ ) were measured using the enzyme-linked immunosorbent assay (ELISA) method. Histopathological examination was performed by counting the Langerhans islet areas.

**RESULTS:** The average IL-6, MDA, and TNF- $\alpha$  levels declined in the cluster receiving *C. nutans* extract and were significantly different from the untreated cluster ( $P < .05$ ). Histopathological examination revealed a significant upsurge in the Langerhans islets area in diabetic rats receiving *C. nutans* extract at doses of 75 and 150 mg/kg ( $P < .05$ ).

**CONCLUSION:** *C. nutans* leaf extract reduced the serum MDA, TNF- $\alpha$ , and IL-6 levels, and increased the Langerhans islets area in a diabetic rat model.

**KEYWORDS:** Diabetes, medicine, tumor necrosis factor- $\alpha$ , malondialdehyde, interleukin-6, Langerhans islet, *Clinacanthus nutans* L

**RECEIVED:** February 22, 2023. **ACCEPTED:** July 27, 2023.

**TYPE:** Original Research

**FUNDING:** The author(s) disclosed receipt of the following financial support for the research, authorship, and/or publication of this article: The authors thank Rector Universitas Airlangga for the financial support (Grant no. 1408/UN3/2019).

**COMPETING INTERESTS:** The author(s) declared no potential conflicts of interest with respect to the research, authorship, and/or publication of this article.

**CORRESPONDING AUTHOR:** Arifa Mustika, Anatomy, Histology, and Pharmacology Department, Faculty of Medicine, Universitas Airlangga, Pucangan I No. 4, Surabaya, East Java 60282, Indonesia. Email: arifa-m@fk.unair.ac.id

## Introduction

Diabetes mellitus (DM) has emerged as a global health issue in recent decades due to its increasing prevalence. The number of patients with DM is increasing from 463 million (8.3%) in 2019 to 537 (10.5%) in 2021, and if no intervention is implemented, 783 million (12.2%) people are estimated to have DM by 2045. Indonesia ranks fifth (9.5 million) among countries with the highest number of people with DM, and this number has increased compared to 2019 at seventh (10.7 million).<sup>1,2</sup>

The primary problems associated with DM are high blood glucose levels due to a shortcoming in insulin production from

pancreatic  $\beta$  cells and insulin resistance activity in peripheral tissues.<sup>3,4</sup> Persistent hyperglycemia increases the formation of free radicals that cause oxidative stress.<sup>5,6</sup> Several studies reported that the oxidant-antioxidant status of the diabetic rat model can be observed by the increased malondialdehyde (MDA) levels.<sup>7-9</sup> Oxidative stress induces low-grade chronic inflammation characterized by an increase in various cytokines, such as interleukin-6 (IL-6), interferon- $\gamma$  (IFN- $\gamma$ ), tumor necrosis factor- $\alpha$  (TNF- $\alpha$ ), and interleukin-1 $\beta$  (IL-1 $\beta$ ).<sup>10,11</sup> It causes  $\beta$ -cell dysfunction and insulin production and secretion defects and exacerbates hyperglycemia.<sup>12</sup> The Langerhans



Creative Commons Non-Commercial CC BY-NC. This article is distributed under the terms of the Creative Commons Attribution-NonCommercial 4.0 License (<https://creativecommons.org/licenses/by-nc/4.0/>) which permits non-commercial use, reproduction and distribution of the work without further permission provided the original work is attributed as specified on the SAGE and Open Access pages (<https://us.sagepub.com/en-us/nam/open-access-at-sage>).

islets are a cluster of pancreatic cells consisting of a few to several thousands of endocrine cells, and concurrently they assemble up to 2% of the total mass of the pancreas. The cell types of the islet are as follows:  $\alpha$  (30%),  $\beta$  (60%),  $\delta$  (10%),  $\epsilon$ , and pancreatic polypeptide cells. Reducing the number of  $\beta$  cells will decrease the area of the Langerhans islets.<sup>13</sup> Oxidative stress is closely related to proinflammatory cytokines on impaired function and  $\beta$ -cell death. Therefore, intervention in the inflammatory pathway is expected to be a therapeutic approach to treat DM. Herbal plants with antioxidant and anti-inflammatory properties are currently developed for this purpose.<sup>14</sup>

*Clinacanthus nutans* Lindau, from the Acanthaceae family, is commonly cultivated in tropical Asian countries, such as Indonesia, China, Malaysia, and Thailand.<sup>15</sup> This plant is traditionally mixed with fresh juices and vegetables or with concoctions and is used to treat skin problems, insect bites, cancer, inflammatory disorders, and DM.<sup>16</sup> The examination of toxicity revealed that *C. nutans* extracts did not imply any toxicity; thus, they can be used to produce potent medicinal medicine for various diseases.<sup>17,18</sup> The plant contains many phytochemicals, including flavonoids, glycosides, pheophytin, flavones, sulfur-containing glycosides, triterpenoids, phytosterol, and alkaloids.<sup>19</sup> Previous studies found that *C. nutans* polar extract has anti-inflammatory, antiviral, anticancer, immunomodulatory, and antidiabetic activity; its semipolar extract has wound-healing, anticancer, and antiviral properties; and its nonpolar extract has anticancer properties.<sup>20</sup> Previous studies reported that *C. nutans* can be used as an antidiabetic drug. The *C. nutans* extract has been found to reduce fasting blood glucose levels in diabetic rats<sup>21,22</sup>; regardless, the proof of its effectiveness in reducing diabetic complications is restricted. Some studies also demonstrated that the extract can increase the serum insulin grade and improve lipid profiles in diabetic rats.<sup>23-25</sup> However, no studies reported its effect in modulating inflammation and repairing pancreatic beta-cell dysfunction. Hence, this study was designed to explore the effects of *C. nutans* extracts on lipid peroxidation, proinflammatory cytokines TNF- $\alpha$  and IL-6, and Langerhans islets areas.

## Material and Methods

### Plant material

*C. nutans* leaves were obtained and determined from Balai Materia Medica Batu, Indonesia. The leaves were ground to a fine powder. For 3 days, *C. nutans* leaf powder was soaked in 70% ethanol using the maceration method and incubated at room temperature with gentle shaking. The extract was concentrated using a rotary evaporator (Buchi, Flawil, Switzerland), forming a thick extract.

### Chemical

Streptozotocin (STZ) was purchased from Sigma-Aldrich Chemicals (Singapore), stored at  $-20^{\circ}\text{C}$ , and protected from

sunlight. The enzyme-linked immunosorbent assay (ELISA) kits for IL-6 (Multi science, catalog number EK306/2) and TNF- $\alpha$  (Multi science, catalog product number EK382/2) were purchased from Multi science distributor. All other chemicals were obtained from Brataco. Corp.

### Animals

Male Wistar rats weighing 150 to 200 g were used as experimental animals in this study. All rats were housed in collective cages at the Laboratory of Pharmacology, Faculty of Medicine, Universitas Airlangga, under controlled temperature with a 12/12-hours light/dark cycle. Standard rodent food and water were provided to all rats ad libitum before and during the experiment. All processes were guided by the principles in the Guide for Care and Use of Laboratory Animals by the National Academics of Science. Ethical clearance was obtained from the ethics committee in the Faculty of Medicine, Universitas Airlangga (Ethics number: 146/EC/KEPK/FKUA/2019).

### Diabetic induction

Rats fasted for 4 hours before induction to empty their stomach and reduce the risk of aspiration. Rats were induced with STZ intraperitoneally at a dose of 50 mg/kg body weight (BW) dissolved in 0.1 M sodium citrate buffer and at a pH of 4.5. After the STZ injection, the rats were administered a 10% dextrose solution overnight to avoid sudden hypoglycemic post-injection. Blood glucose levels were measured from the tail vein 2 days post-injection using a glucometer. Rats with fasting blood glucose grades of  $\geq 200$  mg/dL were considered in diabetic rat models and utilized for this experiment.<sup>6,20,26</sup> Fasting blood glucose levels were measured in all diabetic rat models before starting the experiment.

### Experimental treatment

The Federer formula  $\{(t-1)(r-1) > 15\}$  has been used to determine the sample size, which considers the number of treatment groups ( $t$ ) and the number of replications or sample size ( $r$ ). The formula resulted in a minimum sample size of 4.75 for our study with 5 treatment groups.

Twenty-five diabetic rat models were randomly assigned into 5 clusters comprising 5 animals. Clusters 1, 2, and 3 were administered with *C. nutans* leaf extract in aqueous suspension with vehicle 1% Na-CMC at 75 mg/kg BW, 150 mg/kg BW, and 300 mg/kg BW. Cluster 4 comprising diabetic control rats was administered with metformin at a 21 mg/rat dose. Cluster 5 comprising a control diabetic rat was administered with 1% Na-CMC suspension. Treatment was provided intragastrically for 14 days. BW was measured at pre- and post-treatment.

### Determination of proinflammatory cytokine and lipid peroxidation

At the end of the experiment, after a 12-hour fast, the rats were decapitated. Blood specimens were extracted through cardiac puncture and centrifuged at 4000g, at 4°C for 15 minutes to collect the serum. The serum IL-6 and TNF concentrations were determined using a rat ELISA kit. MDA levels were calorimetrically evaluated using the Thiobarbituric acid reactive substance technique.

### Histopathologic examination

The pancreas was rapidly cleared, cleaned with normal saline, and fixed in 10% buffered formalin for histological examination. The tissue was embedded in paraffin using a tissue-embedding technique, sectioned at 3 to 5 µm thickness, and dyed with hematoxylin and eosin (HE). All tissue slices were visualized using an optical microscope Olympus CX31. Histological analysis was conducted by counting the Langerhans islets area using cell SENS and ImageJ software. The Langerhans islet was observed on each slide at 400× magnification. The total of all Langerhans islet areas per slide was calculated to determine the general area.

### Statistical analysis

All data were analyzed by one-way analysis of variance, followed by a post hoc test using Statistical Package for the Social Sciences Statistics for Windows, Version 27.0.1.0 (IBM Corp., NY, USA) statistic software. Significant differences between clusters are set at  $P < .05$ .

## Results

### Effects of *C. nutans* extract on BW in diabetic rats

A standard indicator of DM is decreased BW. In this study, diabetic rats displayed a declined BW, similar to rats administered with metformin and *C. nutans* extract, except at a dose of 75 mg/kg, a slight gain in BW is observed (Table 1).

### Effects of *C. nutans* extracts on MDA, TNF- $\alpha$ , and IL-6 serum levels in diabetic rats

In diabetic rats, the IL-6, MDA, and TNF- $\alpha$  serum levels were upregulated. Treatment with *C. nutans* extracts significantly reduced lipid peroxidase levels in all clusters as compared to untreated diabetic rats (p cluster 1 = .004, p cluster 2 = .007, p cluster 3 = .001), and in the cluster receiving metformin (p cluster 4 = .002). No significant differences were observed between clusters 1, 2, and 3 (Figure 1a). The grade of proinflammatory cytokines TNF- $\alpha$  in clusters treated with *C. nutans* extract and metformin was significantly lower than that of control diabetic rats (p cluster 1 = .005, p cluster 2 = .001, p cluster 3 = .000, p cluster 4 = .08) (Figure 1b). Similarly, the proinflammatory

**Table 1.** Body weight (BW) at pre- and post-treatment.

CLUSTER	BW AT PRE-TREATMENT (G)	BW AT POST-TREATMENT (G)
1	169.6 ± 23.6	173.0 ± 17.0
2	182 ± 15.4	165.1 ± 31.6
3	173.8 ± 9.6	150.2 ± 12.0
4	183 ± 13.9	161.3 ± 14.9
5	173 ± 13.9	165.6 ± 26.6

Data are presented as means ± standard deviations. Cluster 1, diabetic rats administered. with *C. nutans* leaf extract at doses of 75 mg/kg; Cluster 2, diabetic rats administered. with *C. nutans* leaf extract at doses of 150 mg/kg; Cluster 3, diabetic rats administered. with *C. nutans* leaf extract at doses of 300 mg/kg; Cluster 4, diabetic rat model administered. with metformin at doses of 21 mg/rat; Cluster 5, control diabetic rat.

cytokine IL-6 level in clusters treated with *C. nutans* extract and metformin was significantly lower than that of the control diabetic rats (p cluster 1 = .73 p cluster 2 = .73, p cluster 3 = .01, p cluster 4 = .08). These results suggest that *C. nutans* extract may reduce oxidative damage and inflammation (Figure 1c).

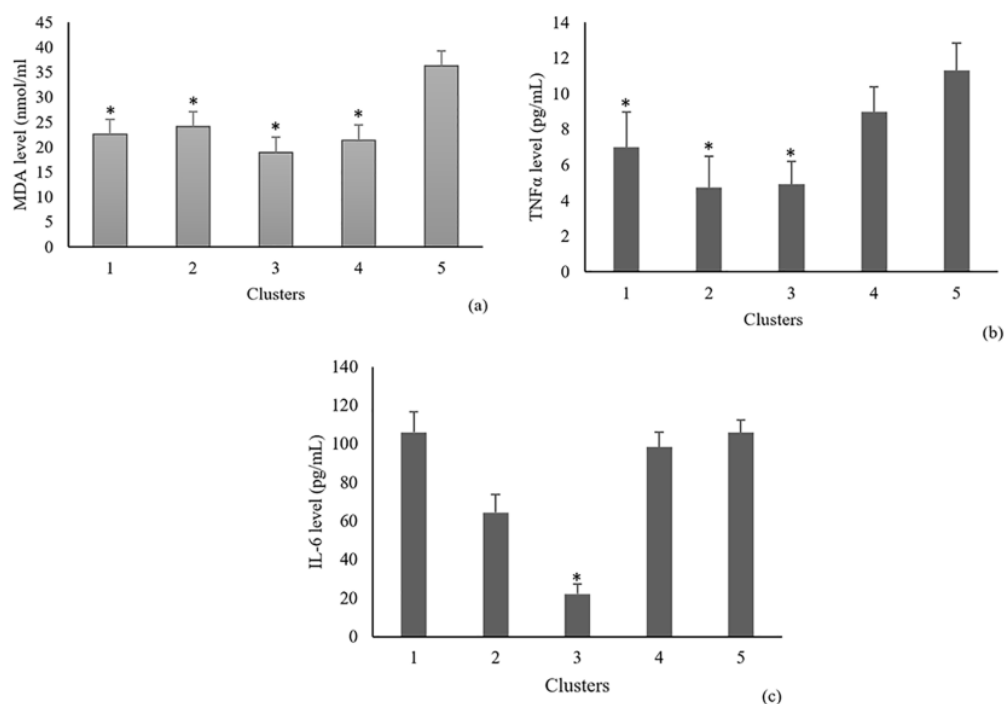
### Effects of *C. nutans* extracts on the Langerhans islet area in diabetic rats

Diabetic rats had damage and pancreatic atrophy, which reduced the size of the Langerhans islets. Nevertheless, the cluster treated with *C. nutans* extract had a significantly higher area of Langerhans islets than diabetic rats not receiving treatment (p cluster 1 = .005, p cluster 2 = .002) (Figure 2). The findings demonstrated that *C. nutans* effectively repaired the area of damaged islets in diabetic rats.

## Discussion

As previously described, hyperglycemia causes oxidative stress and inflammation<sup>27-30</sup> and induces mitochondria and endoplasmic reticulum to produce free radicals, reactive oxygen species (ROS), and reactive nitrogen species. Oxidative stress occurs due to an imbalance between a large number of free radicals and the inability of endogenous antioxidants, such as glutathione peroxidase, catalase, and superoxide dismutase.<sup>11</sup> MDA is a byproduct of lipid peroxidation, which may be defined as the oxidative degradation of polyunsaturated lipids.<sup>31</sup> This study indicated a notable accumulation of the MDA level in the diabetic rat model, indicating the presence of oxidative damage, and providing an appropriate model to assess the anti-diabetic activity of *C. nutans* extract. This study confirmed that *C. nutans* extract significantly decreased the serum IL-6, MDA, and TNF- $\alpha$  levels. Although MDA levels slightly increased in cluster 2, the increase was not significant; thus, this might be due to physiological processes. The result was corroborated by an earlier in vivo study that showed comparable results. MDA and TNF- $\alpha$  levels were markedly decreased in the aortic tissue





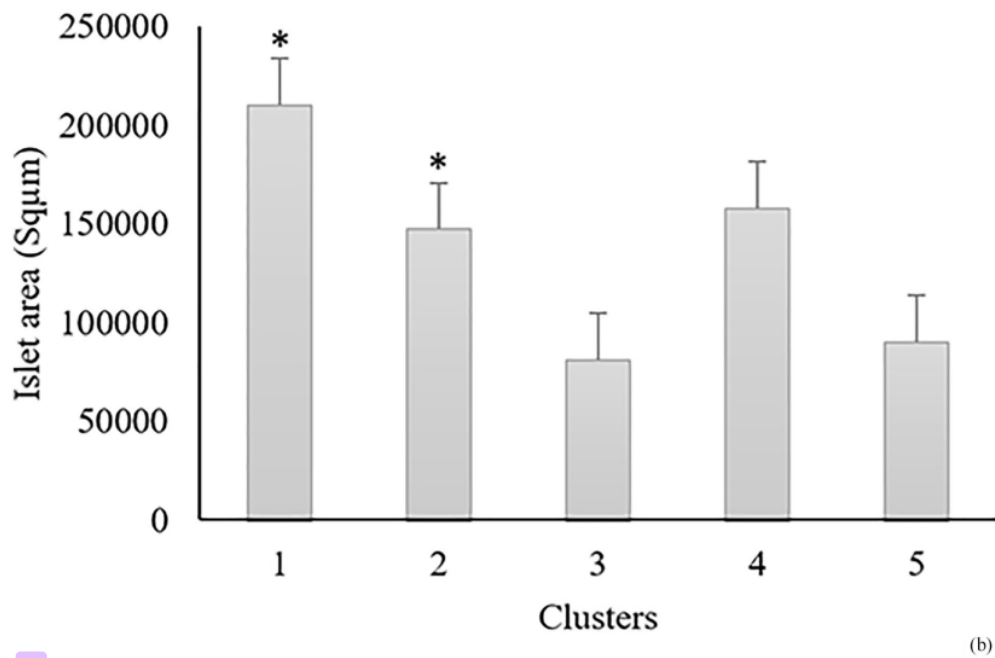
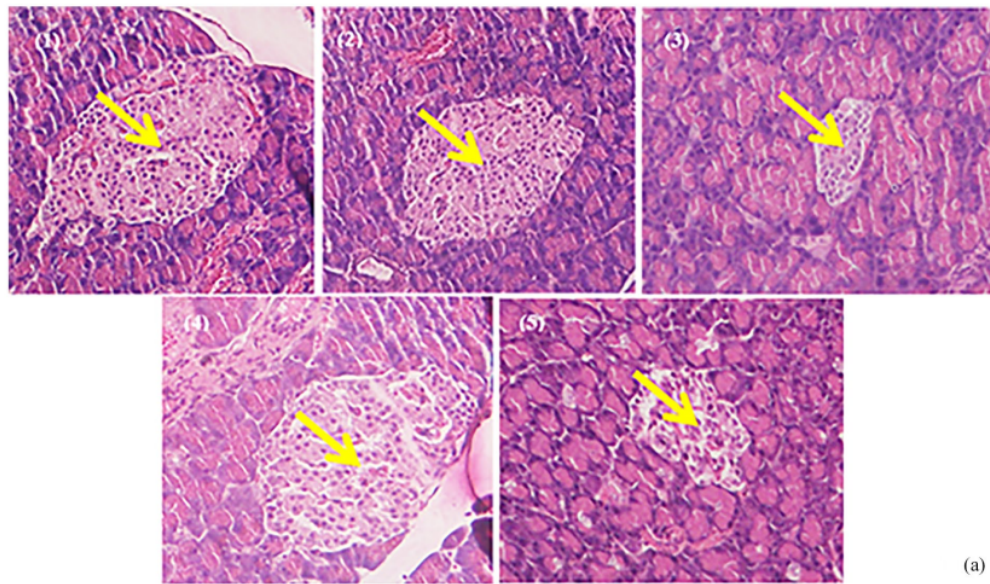
**Figure 1.** MDA (a), TNF- $\alpha$  (b), and IL-6 (c) serum levels post-treatment with *C. nutans* extract in diabetic rats model. Data are presented as means  $\pm$  standard deviations. Cluster 1, diabetic rats administered. with *C. nutans* leaf extract at doses of 75 mg/kg; Cluster 2, diabetic rats administered. with *C. nutans* leaf extract at doses of 150 mg/kg; Cluster 3, diabetic rats administered. with *C. nutans* leaf extract at doses of 300 mg/kg; Cluster 4, diabetic rat model administered. with metformin at doses of 21 mg/rat; Cluster 5, control diabetic rat. \*Different to cluster 5 (diabetic control). A significant difference in MDA and TNF- $\alpha$  level were observed in clusters treated with *C. nutans* at all doses compared to diabetic control. Whereas a significant difference in IL-6 level was only observed in the cluster treated with *C. nutans* dose 300 mg/kg BW compared to diabetic control.

of diabetic rats treated with *C. nutans* methanolic extract.<sup>32</sup> These effects of *C. nutans* extract in diabetic rats were comparable to those of metformin, indicating that *C. nutans* extract has antioxidant activity in the rat DM model. Several plants, such as *Nigella sativa*, *Mulberry juice*, *chicory*, *chamomile tea*, *bell pepper*, and golden sea cucumber, can reduce blood glucose levels through their antioxidant properties.<sup>33,34</sup>

Oxidative stress initiates inflammation via Nf- $\kappa$ B and c-Jun N-kinases (JNK).<sup>35</sup> The production of proinflammatory cytokines IL-6 and TNF- $\alpha$  was regulated by a transcription factor, NF- $\kappa$ B.<sup>36</sup> DM increases JNKs, which are significant regulators of inflammation. TNF- $\alpha$  overexpression is a potent JNK regulator.<sup>37</sup> Diabetic animals display significantly increased proinflammatory cytokine marker levels, such as IL-1 $\beta$ , IL-6, and TNF- $\alpha$ . These recent results showed that the administration of *C. nutans* extracts in diabetic rats significantly reduced serum levels of proinflammatory cytokines TNF- $\alpha$  and IL-6, as did metformin. The current study results are similar to that of the previous *in vitro* study demonstrating lowered TNF- $\alpha$  in lipopolysaccharide-induced inflammation of RAW264.7 cells via *C. nutans* leaf extract.<sup>38</sup> Abdulwahid et al observed decreased IL-6 production in high-fat diet mice

that could be attributed to the phenolic compound in *C. nutans* extract.<sup>39</sup> In obesity, an increased body mass index increased proinflammatory mediators, including IL-6, and corresponds with insulin resistance and an increased risk of type 2 DM.<sup>29</sup> Therefore, the findings of the current study indicated that *C. nutans* leaf extract could be a potential antidiabetic medicine as it demonstrated a comparable therapeutic outcome to metformin.

Oxidative stress has a crucial role in the cell cycle of pancreatic  $\beta$  cells. ROS accumulation suppresses the cyclins D1 and D2 expressions, which are proteins responsible for inducing cell proliferation, and increases the p21, and p27 expressions, which inhibit cyclin D1. Meanwhile, ROS caused FoxO1 translocation, a nuclear activator, from the cytoplasm into the nucleus and inhibited Pdx1. Likewise, ROS also instantly downregulates transcription factors MafA, Pdx-1, Ngn3, and Nkx6.1 and reduces  $\beta$ -cell differentiation and proliferation.<sup>27,40</sup> This study shows that DM reduces the Langerhans islet area. Pancreatic  $\beta$  cells are susceptible to oxidative stress and inflammation, causing cell damage, and apoptosis. Therefore, antioxidant supplementation is a promising therapeutic approach for  $\beta$ -cell regeneration through neogenesis and proliferation.<sup>11,27</sup>



**Figure 2.** Effects of *C. nutans* Extracts on the Langerhans Islet Area in Diabetic Rats based on histopathological examination of the pancreas [HE stain, 400x]. Histopathological image of the Langerhans islet area (yellow arrow) (a), Langerhans islet area calculation (b). Cluster 1, diabetic rats administered with *C. nutans* leaf extract at doses of 75 mg/kg; Cluster 2, diabetic rats administered with *C. nutans* leaf extract at doses of 150 mg/kg; Cluster 3, diabetic rats administered with *C. nutans* leaf extract at doses of 300 mg/kg; Cluster 4, diabetic rat model administered with metformin at doses of 21 mg/rat; Cluster 5, control diabetic rat.

\*Different to cluster 5 (diabetic control). Significant increases in Langerhans islet area was observed in the *C. nutans*-treated clusters at doses of 75 and 150 mg/kg BW compared to diabetic controls.

The potential of *C. nutans* extract in reducing oxidative stress and inflammation in diabetic rats is related to its various phytochemical contents. Phytochemical tests found high phenolic and flavonoid contents in this extract with polar solvents.<sup>41,42</sup> Furthermore, in vitro antioxidant activity tests showed that *C. nutans* extract has strong antioxidant potential through mechanisms including scavenging free radicals 2,2-diphenyl-1-picrylhydrazyl,<sup>42,43</sup> inhibition of production of free radicals in macrophage cells, and elimination of nitric oxide and hydrogen peroxide.<sup>44,45</sup>

The computational simulation confirmed the mechanism of action of *C. nutans* extract as an antioxidant and anti-inflammatory medication. The compounds apigenin, 3,3-di-O-Methylelagic acid, Clinacoside, and Vitexin show high binding affinity to Aldose reductase, an enzyme crucial in the polyol pathway and trigger ROS accumulation<sup>46,47</sup>. Conversely, Clinacoside, Shaftoside, Vitexin, Orientin, Isovitexin, and Isoorientin exhibit an affinity for nitric oxide synthase, an enzyme that catalyzes the nitric oxide production by the vasculature, which plays an important role in triggering oxidative stress in inflammatory conditions.<sup>48</sup>

By proving the effectiveness of herbal plants, their safety should be ensured before administering them to humans. Evaluation of the toxicity of *C. nutans* extract has been widely reported in several studies. The acute toxicity test did not show any toxicity to vital organs, such as the liver, kidneys, heart, lungs, spleen, or other essential organs, and did not result in mortality.<sup>48,49</sup> Similarly, the sub-chronic toxicity test showed no significant changes in all hematological, biochemical, and histopathological parameters.<sup>49,50</sup> Meanwhile, a sub-chronic toxicity test discovered liver and kidney damage at 1000 mg/kg BW for 28 days.<sup>51</sup> Therefore, its use must still be cautiously administered.

It is important to mention that this study only used animal models and further clinical studies are necessary to confirm the effects of *C. nutans* leaf extract on humans with DM. Additionally, the study did not comprehensively compare the effects of *C. nutans* leaf extract with other standard DM treatments, so more research is needed to determine if it can be used on its own or in conjunction with other treatments. Furthermore, the study did not include power analysis for sample size calculation, which can result in issues such as insufficient statistical power, a higher likelihood of type II errors, uncertainties in effect size estimation, and concerns about the generalizability of the findings.

## Conclusion

This study revealed that the *Clinacanthus nutans* L extracts reduce serum levels of tumor necrosis factor- $\alpha$  (TNF- $\alpha$ ), malondialdehyde (MDA), and interleukin-6 (IL-6), which are known to be elevated in diabetes and contribute to inflammation and oxidative stress in the diabetic rat model induced with STZ. This result affirms that the extracts demonstrate potential anti-inflammatory and antioxidant properties. Furthermore, the study discovered that *Clinacanthus nutans* L extracts improve

the Langerhans islet area, which is significant in diabetes as it is responsible for insulin production. The enhancement of the Langerhans islet area suggests that the extracts positively impact pancreatic function and insulin secretion. The results suggest that extracts of *Clinacanthus nutans* L have therapeutic potential in managing diabetes, as they may help regulate blood sugar levels, reduce inflammation and oxidative stress, and improve pancreatic function.

## Declarations

### Ethics approval and consent to participate

The study protocol was approved by the ethics committee in the Faculty of Medicine, Universitas Airlangga (approval code 146/EC/KEPK/FKUA/2019). Consent to participate not applicable for this animal model study.

### Consent for publication

Not applicable.

### Author contributions

Arifa Mustika: Conceptualization; Data curation; Formal analysis; Investigation; Methodology; Supervision; Validation; Writing – original draft; Writing—review & editing. Nurmawati Fatimah: Funding acquisition; Investigation; Resources; Validation; Writing—original draft; Writing—review & editing. Indri Safitri: Conceptualization; Formal analysis; Investigation; Methodology; Writing—original draft; Writing—review & editing. Nurlaili Susanti: Data curation; Formal analysis; Visualization; Writing—original draft; Writing—review & editing. Nurul Shahfiza Noor: Formal analysis; Resources; Validation; Writing—original draft; Writing—review & editing.

### Acknowledgements

None

### Availability of data and materials

N/A.

### ORCID iD

Arifa Mustika  <https://orcid.org/0000-0001-6461-5782>

## REFERENCES

1. Saeedi P, Petersohn I, Salpea P, et al. Global and regional diabetes prevalence estimates for 2019 and projections for 2030 and 2045: results from the International Diabetes Federation Diabetes Atlas, 9th edition. *Diabetes Res Clin Pr*. 2019;157:107843.
2. Sun H, Saeedi P, Karuranga S, et al. IDF Diabetes Atlas: global, regional and country-level diabetes prevalence estimates for 2021 and projections for 2045. *Diabetes Res Clin Pract*. 2022;183:109119-109213.
3. World Health Organization. *Classification of Diabetes Mellitus 2019*. WHO; 2019:36.
4. Sukarno DA, Mustika A, Rejeki PS. Effect of celery extract on fructose induced insulin resistance *Rattus norvegicus*. *Folia Med Indones*. 2020;56:269-274.
5. Yuan T, Yang T, Chen H, et al. New insights into oxidative stress and inflammation during diabetes mellitus-accelerated atherosclerosis. *Redox Biol Internet*. 2019;20:247-260.



6. Mustika A, Fatimah N, Meinar Sari G. The self-nanoemulsifying drug delivery system of *Petiveria alliacea* extract reduced the homeostatic model assessment-insulin resistance value, interleukin-6, and tumor necrosis factor- $\alpha$  level in diabetic rat models. *Vet World*. 2021;14:3229-3234.
7. Desai NK, Bhabhor PH, Domadia D, Bhatt JD. Role of antioxidant therapy in the management of type-2 diabetes mellitus. *Natl J Integr Res Med*. 2015;4:128-133.
8. Kılıçarslan G, Dönmez N. The effects of quercetin on antioxidant system and some blood parameters in experimental diabetic rats. *Bull Env Pharmacol Life Sci*. 2016;5:28-32.
9. Hanchang W, Khamchan A, Wongmanee N, Seedadee C. Hesperidin ameliorates pancreatic  $\beta$ -cell dysfunction and apoptosis in streptozotocin-induced diabetic rat model. *Life Sci*. 2019;235:1-9.
10. Halim M, Halim A. Commentary: the effects of inflammation, aging, and oxidative stress on the pathogenesis of type II diabetes. *J Heal Care Res*. 2020;1:119-124.
11. Darenskaya MA, Kolesnikova LI, Kolesnikov SI. Oxidative stress: Pathogenetic role in diabetes mellitus and its complications and therapeutic approaches to correction. *Bull Exp Biol Med*. 2021;171:179-189.
12. Böni-Schnetzler M, Meier DT. Islet inflammation in type 2 diabetes. *Semin Immunopathol*. 2019;41:501-513.
13. Da Silva Xavier G. The cells of the islets of Langerhans. *J Clin Med*. 2018;7:1-17.
14. Alam S, Sarker MMR, Sultana TN, et al. Antidiabetic phytochemicals from medicinal plants: prospective candidates for new drug discovery and development. *Front Endocrinol*. 2022;13:800714-800735.
15. Alam A, Ferdosh S, Ghafoor K, et al. *Clinacanthus nutans*: a review of the medicinal uses, pharmacology and phytochemistry. *Asian Pac J Trop Med*. 2016;9:402-409.
16. Kamarudin MNA, Sarker MMR, Kadir HA, Ming LC. Ethnopharmacological uses, phytochemistry, biological activities, and therapeutic applications of *Clinacanthus nutans* (Burm. f.) Lindau: a comprehensive review. *J Ethnopharmacol*. 2017;206:245-266.
17. Roslan NA, Kassim NII, Lim V, Jemon K. Subacute toxicity study of *Clinacanthus nutans* ethanolic extract in vivo. *Int Postgr Symp Biotechnol*. 2017;2017:3-6.
18. Tan LTH, Khaw KY, Ong YS, Khan TM, Lee LH. An overview of *Clinacanthus nutans* (Burm. f.) Lindau as a medicinal plant With diverse pharmacological values. In: Swamy MK ed. *Plant-derived Bioactives Production, Properties and Therapeutic Applications*. Springer; 2020;461-492.
19. Khoo LW, Audrey Kow S, Lee MT, et al. A comprehensive review on phytochemistry and pharmacological activities of *Clinacanthus nutans* (Burm.f.) Lindau. *Evid-Based Complement Altern Med*. 2018;2018:1-39.
20. Dewinta NR, Mukono IS, Mustika A. Pengaruh Pemberian Ekstrak Dandang Gendis (*Clinacanthus nutans*) terhadap Kadar glukosa Darah pada Tikus Wistar model diabetes mellitus. *J Med Vet*. 2020;3:76.
21. Mas'ulun MJ, Mustika A, Qurnianingsih E. The effect of Dandang Gendis extract (*Clinacanthus nutans*) on kidney histopathological features of diabetic rats model. *Health Notions*. 5:2021:19-22.
22. Sarega N, Imam MU, Ooi DJ, et al. Phenolic rich extract from *Clinacanthus nutans* attenuates hyperlipidemia-associated oxidative stress in rats. *Oxid Med Cell Longev*. 2016;2016:4137908-4137916.
23. Umar Imam M, Ismail M, George A, Chinnappan SM, Yusof A. Aqueous leaf extract of *Clinacanthus nutans* improved metabolic indices and sorbitol-related complications in type II diabetic rats (T2D). *Food Sci Nutr*. 2019;7:1482-1493.
24. Azemi AK, Mokhtar SS, Rasool AHG. *Clinacanthus nutans* leaves extract reverts endothelial dysfunction in type 2 diabetes rats by improving protein expression of eNOS. *Oxid Med Cell Longev*. 2020;2020:7572892-7572910.
25. Islam MS, Wilson RD. Experimentally induced rodent models of type 2 diabetes. *Animal Models in Diabetes Research*. Springer Science+Business Media, LLC; 2012;161-174.
26. Wang J, Wang H. Oxidative stress in pancreatic beta cell regeneration. *Oxid Med Cell Longev*. 2017;2017:1930261.
27. Eguchi N, Vaziri ND, Dafoe DC, Ichii H. The role of oxidative stress in pancreatic  $\beta$  cell dysfunction in diabetes. *Int J Mol Sci*. 2021;22:1509-1518.
28. Gunawan VA, Soetjipto H, Mustika A. Hypoglycemic and antioxidant activity of *Petiveria alliacea* in diabetic rat models. *Biomol Heal Sci J*. 2020;3:19.
29. Montane J, Cadavez L, Novials A. Stress and the inflammatory process: A major cause of pancreatic cell death in type 2 diabetes. *Diabetes Metab Syndr Obes*. 2014;7:25-34.
30. Nisar N, Sultana M, Waiz H, et al. Experimental study on the effect of vitamin C administration on lipid peroxidation and antioxidant enzyme activity in rats exposed to chlorpyrifos and lead acetate. *Vet World*. 2013;6:461-466.
31. Azemi AK, Mokhtar SS, Sharif SET, Rasool AHG. *Clinacanthus nutans* attenuates atherosclerosis progression in rats with type 2 diabetes by reducing vascular oxidative stress and inflammation. *Pharm Biol*. 2021;59:1432-1440.
32. Setiyorini E, Qomaruddin MB, Wibisono S, et al. Complementary and alternative medicine for glycemic control of diabetes mellitus: a systematic review. *J Public Health Res*. 2022;11:22799036221106582.
33. Purwanto B, Wiyashati SI, Masyitha PA, Wigati KW, Irwadi I. Golden sea cucumber extract revives glucose transporter-4 and interleukin-6 protein level in diabetic mouse muscle. *Vet World*. 2019;12:684-688.
34. Boarescu PM, Boarescu I, Pop RM, et al. Evaluation of oxidative stress biomarkers, Pro-Inflammatory cytokines, and histological changes in experimental hypertension, dyslipidemia, and type 1 diabetes mellitus. *Int J Mol Sci*. 2022;23:1-17.
35. Yapıslar H, Hacıosmanoglu E, Sarioglu T, et al. Anti-inflammatory effects of melatonin in rats with induced type 2 diabetes mellitus. *Life*. 2022;12:1-18.
36. Roy S, Metya SK, Sannigrahi S, Rahaman N, Ahmed F. Treatment with ferulic acid to rats with streptozotocin-induced diabetes: effects on oxidative stress, pro-inflammatory cytokines, and apoptosis in the pancreatic  $\beta$  cell. *Endocrine*. 2013;44:369-379.
37. Han X, Tao YL, Deng YP, et al. Metformin ameliorates insulinitis in STZ-induced diabetic mice. *Peetf*. 2017;5:e3155;1-13.
38. Mai CW, Yap KS, Kho MT, et al. Mechanisms underlying the anti-inflammatory effects of *Clinacanthus nutans* Lindau extracts: inhibition of cytokine production and toll-like receptor-4 activation. *Front Pharmacol*. 2016;7:7-11.
39. Abdulwahid SJ, Ebrahimi M, Goh Y, Adeyemi KD, Ismail H, Hashim Z. Methanolic extract of *Clinacanthus nutans* leaves can alter adipocyte cellularity, inflammation and acetyl cholinesterase activity in male obese mice. *J Obes Weight Loss Ther*. 2017;07:1-10.
40. Khoo LW, Mediani A, Zolkeflee NKZ, et al. Phytochemical diversity of *Clinacanthus nutans* extracts and their bioactivity correlations elucidated by NMR based metabolomics. *Phytochem Lett*. 2015;14:123-133.
41. Susanti N, Mustika A, Khotib J, Muti'ah R, Rochmanti M. Phytochemical, metabolite compound, and antioxidant activity of *Clinacanthus nutans* leaf extract from Indonesia. *Indones J Sci Technol*. 2023;8:38-44.
42. Ghasemzadeh A, Nasiri A, Jaafar HZ, Baghdadi A, Ahmad I. Changes in phytochemical synthesis, chalcone synthase activity and pharmaceutical qualities of sabah snake grass (*Clinacanthus nutans* L.) in relation to plant age. *Molecules*. 2014;19:17632-17648.
43. Pannangpetch P, Laupattarakasem P, Kukongviriyapan V, Kukongviriyapan U, Kongyingyoes B, Aromdee C. Antioxidant activity and protective effect against oxidative hemolysis of *Clinacanthus nutans* (Burm.f) Lindau. *Songklanakarin J Sci Technol*. 2007;29:1-9.
44. Yong YK, Tan JJ, Teh SS, et al. *Clinacanthus nutans* Extracts are antioxidant with antiproliferative effect on cultured human cancer cell lines. *Evid-Based Complement Altern Med*. 2013;2013:1-8.
45. Wong FC, Yong AL, Ting EP, Khoo SC, Ong HC, Chai T-T. Antioxidant, metal chelating, anti-glucosidase activities and phytochemical analysis of selected tropical medicinal plants. *Iran J Pharm Res*. 2014;13:1409-1415.
46. Putri SRD, Bella I, Khaerunnisa S, Susanti N, Mustika A. In silico analysis effect of potential antidiabetic from dandang gendis extract on aldose reductase, glucokinase, and GSK3 $\beta$  for type 2 diabetes mellitus. *Curr Intern Med Res Pr Surabaya J*. 2023;4:10-19.
47. Narayanaswamy R, Isha A, Wai LK, Ismail IS. Molecular docking analysis of selected *clinacanthus nutans* constituents as xanthine oxidase, nitric oxide synthase, human neutrophil elastase, matrix metalloproteinase 2, matrix metalloproteinase 9 and squalene synthase inhibitors. *Pharmaogn Mag*. 2016;12:S21-S26.
48. P'ng XW, Akowuah GA, Chin JH. Acute oral toxicity study of *Clinacanthus nutans* in mice. *Int J Pharm Sci Res*. 2012;3:4202-4205.
49. Zakaria ZA, Abdul Rahim MH, Moharrudin N, et al. Acute and sub-chronic oral toxicity studies of methanol extract of *clinacanthus nutans* in mice. *Afr J Tradit Complement Altern Med*. 2016;13:210-222.
50. P'ng XW, Akowuah GA, Chin JH. Evaluation of the sub-acute oral toxic effect of methanol extract of *Clinacanthus nutans* leaves in rats. *J Acute Dis Internet*. 2013;2:29-32.
51. Aliyu A, Shaari MR, Ahmad Sayuti NS, et al. Subacute oral administration of *Clinacanthus nutans* ethanolic leaf extract induced liver and kidney toxicities in ICR mice. *Molecules*. 2020;25:1-27.



# Clinacanthus nutans L Extracts Reduce the Serum Tumor Necrosis Factor- $\alpha$ , Malondialdehyde, and Interleukin-6 Levels and Improve the Langerhans Islet Area in Diabetic Rat Models

## ORIGINALITY REPORT

19%

SIMILARITY INDEX

15%

INTERNET SOURCES

14%

PUBLICATIONS

4%

STUDENT PAPERS

## PRIMARY SOURCES

1	<a href="http://portlandpress.com">portlandpress.com</a> Internet Source	1%
2	Submitted to The University of Texas at Arlington Student Paper	1%
3	<a href="http://journals.plos.org">journals.plos.org</a> Internet Source	1%
4	<a href="http://www.omicsonline.org">www.omicsonline.org</a> Internet Source	1%
5	<a href="http://f1000researchdata.s3.amazonaws.com">f1000researchdata.s3.amazonaws.com</a> Internet Source	1%
6	<a href="http://www.hindawi.com">www.hindawi.com</a> Internet Source	1%
7	Wanthanee Hanchang, Aree Khamchan, Navinee Wongmanee, Chananchida Seedadee. "Hesperidin ameliorates pancreatic $\beta$ -cell dysfunction and apoptosis in	1%

streptozotocin-induced diabetic rat model",  
Life Sciences, 2019

Publication

---

8	<a href="https://bmcpregnancychildbirth.biomedcentral.com">bmcpregnancychildbirth.biomedcentral.com</a> Internet Source	1 %
9	Ramona Nasr, Eman Swaidan, Chadia Haddad, Wissam Jre, Joanne Karam. "The Impact of Self-Care and Distress on Diabetic Patients in Lebanon During the Multiple Crisis", Research Square Platform LLC, 2023 Publication	<1 %
10	Muhamad Noor Alfarizal Kamarudin, Md. Moklesur Rahman Sarker, Habsah Abdul Kadir, Long Chiau Ming. "Ethnopharmacological uses, phytochemistry, biological activities, and therapeutic applications of Clinacanthus nutans (Burm. f.) Lindau: A comprehensive review", Journal of Ethnopharmacology, 2017 Publication	<1 %
11	<a href="http://banglajol.info">banglajol.info</a> Internet Source	<1 %
12	<a href="http://phcogj.com">phcogj.com</a> Internet Source	<1 %
13	<a href="http://www.unboundmedicine.com">www.unboundmedicine.com</a> Internet Source	<1 %
14	<a href="http://pesquisa.bvsalud.org">pesquisa.bvsalud.org</a> Internet Source	<1 %

---

15 [phcog.com](http://phcog.com) Internet Source <1 %

---

16 [s3-eu-west-1.amazonaws.com](http://s3-eu-west-1.amazonaws.com) Internet Source <1 %

---

17 [e-journal.unair.ac.id](http://e-journal.unair.ac.id) Internet Source <1 %

---

18 [www.cell.com](http://www.cell.com) Internet Source <1 %

---

19 Zi-Cheng Zhang, Guan-Hua Su, Chun-Li Luo, Ya-Lu Pang, Lin Wang, Xing Li, Jia-Hao Wen, Jiu-Liang Zhang. "Effects of anthocyanins from purple sweet potato (*Ipomoea batatas* L. cultivar Eshu No. 8) on the serum uric acid level and xanthine oxidase activity in hyperuricemic mice", *Food & Function*, 2015  
Publication <1 %

---

20 [www.scribd.com](http://www.scribd.com) Internet Source <1 %

---

21 A. A. Hamza. "Red Cabbage (*Brassica oleracea*) Ameliorates Diabetic Nephropathy in Rats", *Evidence-based Complementary and Alternative Medicine*, 12/01/2006  
Publication <1 %

---

22 [mail.phcogj.com](http://mail.phcogj.com) Internet Source <1 %

---

[prod--journal.elifesciences.org](http://prod--journal.elifesciences.org)



23

Internet Source

<1 %

---

24

[psychiatry-psychopharmacology.com](http://psychiatry-psychopharmacology.com)

Internet Source

<1 %

---

25

[www.jimmunol.org](http://www.jimmunol.org)

Internet Source

<1 %

---

26

Submitted to Udayana University

Student Paper

<1 %

---

27

[gsconlinepress.com](http://gsconlinepress.com)

Internet Source

<1 %

---

28

[ijlr.org](http://ijlr.org)

Internet Source

<1 %

---

29

[www.wjgnet.com](http://www.wjgnet.com)

Internet Source

<1 %

---

30

[downloads.hindawi.com](http://downloads.hindawi.com)

Internet Source

<1 %

---

31

[www.spandidos-publications.com](http://www.spandidos-publications.com)

Internet Source

<1 %

---

32

Ipsita Banerjee. "ECM-based scaffolds for pancreas bioengineering", Elsevier BV, 2020

Publication

<1 %

---

33

[all-imm.com](http://all-imm.com)

Internet Source

<1 %

---

34

[innovareacademics.in](http://innovareacademics.in)

Internet Source

<1 %

35

[mscm.acadmed.my](http://mscm.acadmed.my)

Internet Source

<1 %

36

[strathprints.strath.ac.uk](http://strathprints.strath.ac.uk)

Internet Source

<1 %

37

M. Munirah, S.H Ahmad, H.M Ghazali, T.M.M Mahmud, B.R Ketaren, N.I.A Shukor, N.E Tajidin. "PLANT VEGETATIVE STAGES AND DRYING METHODS AFFECT THE FLAVONOID CONTENT OF CLINACANTHUS NUTANS EXTRACTS", African Journal of Traditional, Complementary and Alternative Medicines, 2018

Publication

<1 %

38

Submitted to University of Sydney

Student Paper

<1 %

39

[academicjournals.org](http://academicjournals.org)

Internet Source

<1 %

40

[www.animbiosci.org](http://www.animbiosci.org)

Internet Source

<1 %

41

[www.intechopen.com](http://www.intechopen.com)

Internet Source

<1 %

42

Chandrasekaran Sankaranarayanan, Karunanithi Kalaivani. "Isopulegol, A Dietary Monoterpene Mitigates Hyperglycemia

<1 %

MediatedOxidative and Endoplasmic Reticulum Stress in HFD/STZ InducedDiabetic Rats", Archives of Medical Research, 2020

Publication

43

Intan Soraya Che Sulaiman, Mahiran Basri, Hamid Reza Fard Masoumi, Siti Efliza Ashari, Hamidon Basri, Maznah Ismail. " Predicting the optimum compositions of a transdermal nanoemulsion system containing an extract of leaves (L.) for skin antiaging by artificial neural network model ", Journal of Chemometrics, 2017

Publication

<1 %

44

Nadeeya Mad-adam, Sirinapa Dokduang, Siriporn Taraporn, Jirakrit Saetang et al. "Piper nigrum extract retards tumor growth by reducing tumor-promoted cytokines/chemokines and modulating immune cells in blood circulation", Research Square Platform LLC, 2023

Publication

<1 %

45

[biomedpharmajournal.org](http://biomedpharmajournal.org)

Internet Source

<1 %

46

[rdo.psu.ac.th](http://rdo.psu.ac.th)

Internet Source

<1 %

47

[stemcellres.biomedcentral.com](http://stemcellres.biomedcentral.com)

Internet Source

<1 %



48

[translational-medicine.biomedcentral.com](https://translational-medicine.biomedcentral.com)

Internet Source

&lt;1 %

49

[www.vetmedmosul.com](http://www.vetmedmosul.com)

Internet Source

&lt;1 %

50

Chin Theng Ng, Lai Yen Fong, Jun Jie Tan, Nor Fadilah Rajab et al. "Water extract of Clinacanthus nutans leaves exhibits in vitro, ex vivo and in vivo anti-angiogenic activities in endothelial cell via suppression of cell proliferation", BMC Complementary and Alternative Medicine, 2018

Publication

&lt;1 %

51

Hande Yapislar, Ebru Haciosmanoglu, Turkan Sarioglu, Sevgin Degirmencioglu, Ibrahim Sogut, Michael Poteser, Cem Ekmekcioglu. "Anti-Inflammatory Effects of Melatonin in Rats with Induced Type 2 Diabetes Mellitus", Life, 2022

Publication

&lt;1 %

52

Phiwayinkosi V Dlodla, Sihle E Mabhida, Khanyisani Ziqubu, Bongani B Nkambule et al. "Pancreatic  $\beta$ -cell dysfunction in type 2 diabetes: Implications of inflammation and oxidative stress", World Journal of Diabetes, 2023

Publication

&lt;1 %

53

"Functional Food and Human Health",  
Springer Science and Business Media LLC,  
2018

Publication

&lt;1 %

54

Dramane Diallo, Shan Sun, Anou Moise  
Somboro, Bocar Baya et al. "Metabolic and  
Immune Consequences of Antibiotic Related  
Microbiome Alterations during first-line  
Tuberculosis Treatment in Bamako, Mali",  
Research Square Platform LLC, 2023

Publication

&lt;1 %

55

Nur Mazidah Haji Noor Mohamed, Vuanghao  
Lim, Rafeezul Mohamed, Ida Shazrina Ismail.  
"Regulation of the macrophage cellular  
response by Clinacanthus nutans extracts in  
J774.2 macrophages", Journal of Herbal  
Medicine, 2022

Publication

&lt;1 %

56

Yun Jin Kim, Linchao Qian, Muhammad  
Shahzad Aslam. "Bibliographic analysis of  
Clinacanthus nutans papers in Scopus  
database (2000–2019)", F1000Research, 2021

Publication

&lt;1 %

57

[research.library.mun.ca](https://research.library.mun.ca)

Internet Source

&lt;1 %

Exclude quotes Off

Exclude matches Off

Exclude bibliography On



# Clinacanthus nutans L Extracts Reduce the Serum Tumor Necrosis Factor- $\alpha$ , Malondialdehyde, and Interleukin-6 Levels and Improve the Langerhans Islet Area in Diabetic Rat Models

---

GRADEMARK REPORT

---

FINAL GRADE

GENERAL COMMENTS

**/0**

---

PAGE 1

---

PAGE 2

---

PAGE 3

---

PAGE 4

---

PAGE 5

---

PAGE 6

---

PAGE 7

---