

# pla2g6-aSSOCIATED

*by Nur Aisyah Widjaja*

---

**Submission date:** 16-Oct-2023 11:15AM (UTC+0800)

**Submission ID:** 2196905531

**File name:** pla2g6-aSSOCIATED.pdf (472.68K)

**Word count:** 2568

**Character count:** 14487

## PLA2G6-Associated Neurodegeneration: A Rare Case Report of Neurodegeneration with Brain Iron Accumulation in Children

Nurani Widiati<sup>1</sup>, Meta Herdiana Hanindita<sup>2</sup>,  
Nur Aisiyah Widjaja<sup>3</sup>, Roedi Irawan<sup>4</sup>

### SUMMARY

This report aimed to describe and review the clinical features, neuroimaging findings, and PLA2G6 mutations identified in a 34-month-old girl with regression of developmental milestones.

A 34 months old girl came to Dr. Soetomo Hospital's outpatient clinic, Surabaya, with a developmental regression for six months, and got worse until she could not do any activity and was followed by recurrent seizures. She had a sibling who had similar problems and symptoms and then died at five years of age. The head MRI revealed brain atrophy, the possibility of an early sign of metabolic disorder, and a white matter lesion at the globus pallidus bilateral that supports the encephalopathy metabolic view. The genetic test revealed a positive homozygous such as a pathogenic variant in the PLA2G6 gene, which confirmed the diagnosis. PLA2G6-Associated with Neurodegeneration (PLAN) should be considered as a diagnosis in children with developmental regression.

**KEYWORDS:** Developmental regression, NBIA, PLAN, Inherited metabolic diseases.

doi: <https://doi.org/10.12669/pjms.39.1.6801>

**How to cite this:** Widiati N, Hanindita MH, Widjaja NA, Irawan R. PLA2G6-Associated Neurodegeneration: A Rare Case Report of Neurodegeneration with Brain Iron Accumulation in Children. *Pak J Med Sci.* 2023;39(1):310-313. doi: <https://doi.org/10.12669/pjms.39.1.6801>

This is an Open Access article distributed under the terms of the Creative Commons Attribution License (<http://creativecommons.org/licenses/by/3.0>), which permits unrestricted use, distribution, and reproduction in any medium, provided the original work is properly cited.

### INTRODUCTION

Over the past two decades, nearly all Neurodegeneration with Brain Iron Accumulation (NBIA) disorders have been elucidated, particularly with a focus on the basal ganglia and globus pallidus.<sup>1</sup> NBIA is a set of life-threatening rare monogenic diseases characterized by focal iron accumulation in the brain, with a prevalence of less than 1/1,000,000 in the general population and considered a "rare" disease.<sup>2</sup> NBIA is divided into four types: pantothenate kinase-associated

neurodegeneration (PKAN); phospholipase A2-associated neurodegeneration (PLAN); mitochondrial membrane protein-associated neurodegeneration (MPAN); and beta-propeller protein-associated neurodegeneration (BPAN). Each type gives a different presentation and prognosis.<sup>2</sup>

The present paper reports a case of NBIA PLAN type in a 34-month-old girl. To the best of our knowledge, this is the first reported case of neurodegeneration with brain iron accumulation in Indonesia. The purpose of this case report was to report and review the disease. This report emphasizes the importance of correct diagnosis for a rare case of neurodegeneration with brain iron accumulation in a child, thus we can monitor the patient better, reduce the mortality rate, improve the patient's quality of life and estimate their prognosis better.

### CASE PRESENTATION

A 34-month-old girl came to Dr. Soetomo Hospital's outpatient clinic, Surabaya, on 14 June 2021, with a chief complaint of developmental regression since she was eighteen months old. The problems worsened until she could not do any activity when she was 24 months old. She experienced recurring seizures without fever twice a month.

Her four-years-older-sibling died at the age of five after showing similar signs and symptoms. The patient was delivered by C-section at 38 weeks of gestational

1. Nurani Widiati,
  2. Meta Herdiana Hanindita,
  3. Nur Aisiyah Widjaja,
  4. Roedi Irawan,
- 1-4: Department of Child Health, Faculty of Medicine, Universitas Airlangga, Dr. Soetomo General Hospital, Surabaya, Indonesia.

#### Correspondence:

Nur Aisiyah Widjaja, MD.  
Department of Child Health,  
Faculty of Medicine, Universitas Airlangga,  
Dr. Soetomo General Hospital,  
Surabaya Mayjen Prof. Dr. Moestopo No. 6-8,  
Surabaya, Indonesia.  
Email: [nuraisyahwidjaja@gmail.com](mailto:nuraisyahwidjaja@gmail.com)

- |                             |                   |
|-----------------------------|-------------------|
| * Received for Publication: | June 27 2022      |
| * Revision Received:        | November 10, 2022 |
| * Revision Accepted:        | November 15, 2022 |

age, and the indication of breech presentation with birth weight, length, and head circumference were 2900 grams, 47 cm, and 32 cm, respectively. The patient had completed the basic immunization. According to her nutritional history, the mother breastfed her until she was 18 months old, continued with the formula milk via spoon until 32 months old, and then enteral from 33 months old until now.

She could smile at two months old, prone at four months old, babble at six months old, say "mama" specifically, and clap hands at nine months old. At nine months old, she could not sit down, head up, prone herself, or reach toys. At 18 months old, her babbling was decrement, and she fell while sitting, prone rarely but still could head up and reach a toy. At 24 months old, she could not head up, inability to be prone by herself, could not reach toys, there was no babbling but still could cry, and her eyes still could follow a motion. The upper extremities could move flexion, and the lower extremities could move laterally. Furthermore, day by day, she could only cry softly.

The vital sign and physical examination showed no remarkable findings. A BCG scar was found on the right arm. Her neurological status revealed apathy, isochoric pupils of 3mm/3mm, positive light reflex, and no sign of meningeal irritation. Physiological reflex decreased +1 for all extremities and no pathological reflex. The motor examination resulted in +1 for all extremities and flaccid muscle tone.

The laboratory finding revealed that Hb 11.6 g/dl, Hct 35.8 g/dl, MCV 71.6 fL, MCH 23.2 pg, MCHC 32.4 g/dL, leucocyte 9290 uL, thrombocyte 532000 uL, erythrocyte 5000000 uL, Ca 9.6 mg/dL, sodium 137.2 mmol/L, potassium 3.81 mmol/L, chloride 105.7 mmol/L, pH

7.42, pCO<sub>2</sub> 23.4 mmHg, pO<sub>2</sub> 79 mmHg, SO<sub>2</sub> 96%, BE -9 mmol/L, T 37.5C, and lactic acid 4.7 mmol/L, and ammonia 62.2 mmol/L.

The amino profile-19 examination showed a decrement in aspartic acid (ASP) and an increment in glutamic acid (GLU). The first head MRI on December 2019 revealed slight brain atrophy, which had the possibility of an early sign of a metabolic disorder of the brain. At this time, there are no pathognomonic signs of metabolic disease in the brain parenchymal yet. The second head MRI was performed one year later and revealed a white matter lesion at globus pallidus bilateral that supports the encephalopathy metabolic view (new lesion), subdural fluid collection on bilateral frontal regions, focal brain atrophy fronto-temporo-parietal bilateral lobe, cerebellum, and brain stem (increasing process), and microcephalic with brachycephalic skull type. (Fig.1).

The electroencephalography on December 2nd 2020 showed abnormal EEG III, spike-wave in the left mid-temporal, and excessive beta activity. The impression of abnormal EEG during recording indicated an epileptogenic potential in the left mid-temporal region.

A genetic test was performed on April 1st 2021. The interpretation was that a homozygous possible pathogenic variant was identified in the PLA2G6 gene. She was diagnosed with Neurodegeneration with Brain Iron Accumulation (NBIA): PLA2G6-Associated Neurodegeneration (PLAN) type. Symptomatic treatment was administered to the patient. Informed consent for the publication of clinical data has been obtained from this patient.

## DISCUSSION

In this case, a 34 months old girl came with a chief complaint of developmental regression. Careful and

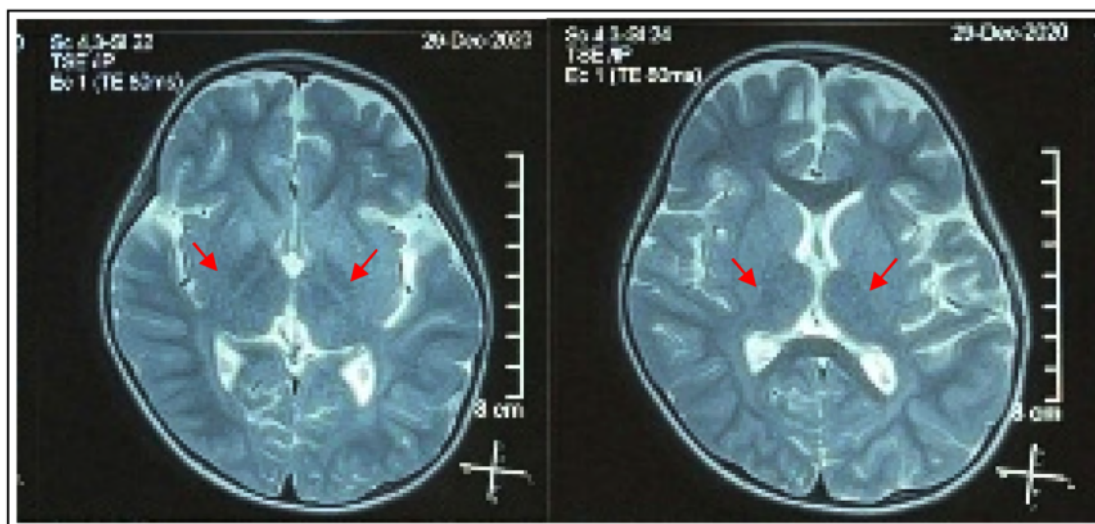


Fig.1: The second head MRI showed a white matter lesion at globus pallidus bilateral that supports the encephalopathy metabolic view (new lesion), subdural fluid collection on bilateral frontal regions, focal brain atrophy fronto-temporo-parietal bilateral lobe, cerebellum, and brain stem (increasing process), and microcephalic with brachycephalic skull type.

comprehensive clinical assessment, imaging studies, electrophysiologic investigation, and histopathologic and ultrastructural information from selected biopsies help establish the distribution and type of abnormalities within the nerve system. Retinitis pigmentosa, hepatocellular dysfunction, and renal tubular dysfunction in a child with psychomotor retardation, muscle weakness, and seizures strongly suggest the possibility of a mitochondrial defect. While hepatosplenomegaly without significant hepatocellular dysfunction in a child with slowly progressive psychomotor retardation and ataxia without seizure may suggest lysosomal storage

diseases.<sup>3</sup> Neurologic symptoms such as global cognitive disabilities, developmental delay, loss of previously acquired skills, or psychomotor retardation are the presenting and most major clinical problems associated with many inherited metabolic disorders.<sup>3</sup> (Fig.2)

Our patient had a sibling who died at five years old with similar signs and symptoms. Most mutations cause diseases transmitted as autosomal recessive disorders.<sup>3</sup> Seven of the ten genetically defined types of NBIA are inherited autosomal recessive, except neuroferritinopathy, mitochondrial membrane protein-associated neurodegeneration (MPAN), and beta-

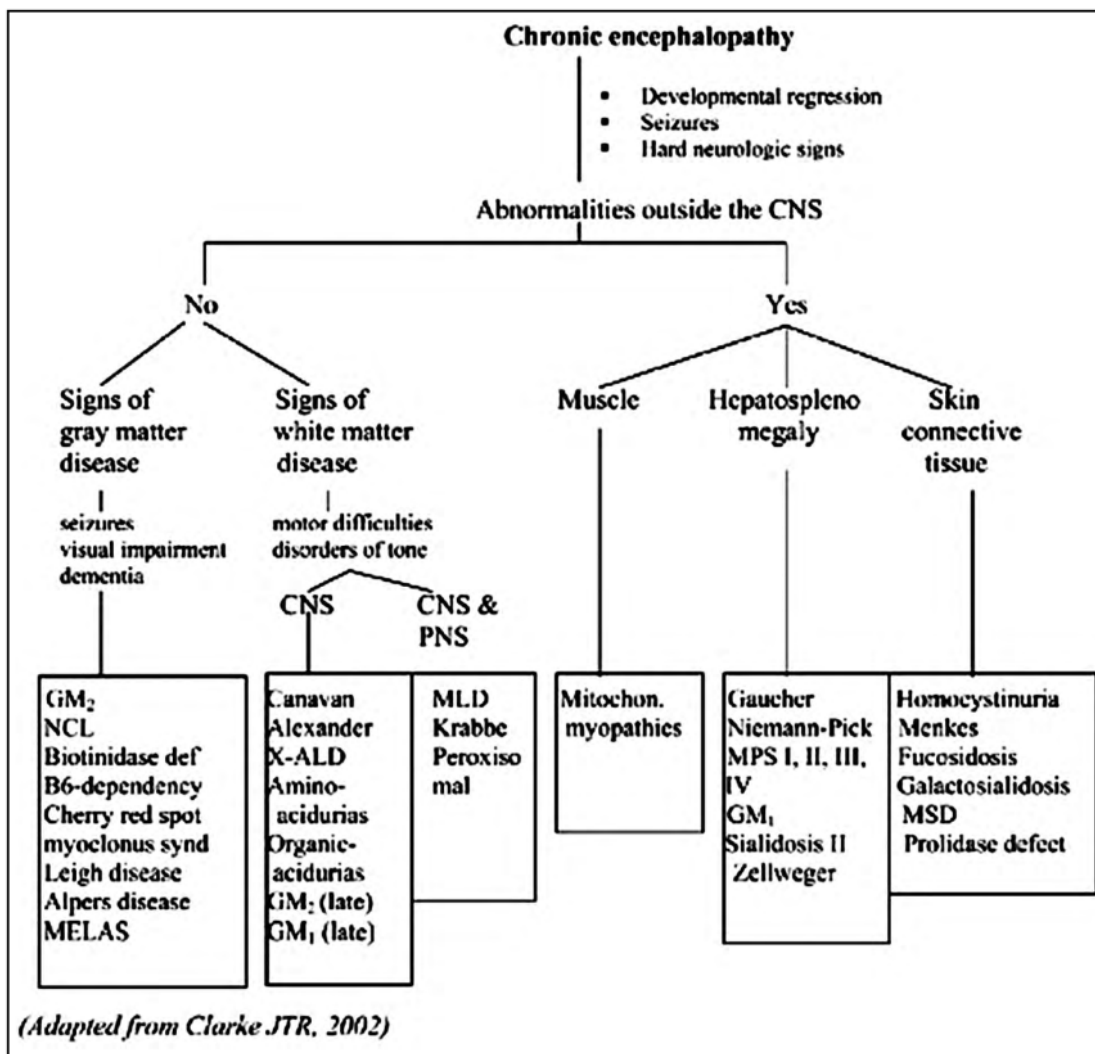


Fig.2: Approach to inherited metabolic diseases with chronic encephalopathy.<sup>3</sup>

Abbreviations: GM<sub>2</sub>: gangliosidosis, GM<sub>1</sub>: gangliosidosis, NCL: neuronal ceroidlipofuscinosis, MELAS: mitochondrial encephalopathy lactic acidosis syndrome, X-ALD: X-adrenoleukodystrophy, MLD: metachromatic leukodystrophy, MPS: mucopolysaccharidosis, MSD: multiple sulfatase deficiency.

propeller protein-associated neurodegeneration (BPAN).<sup>4</sup> NBIA diagnosis is based on a genetic test. A biochemical test is performed to rule out a differential diagnosis, while an MRI is performed as an additional examination to confirm the diagnosis.

Patients with a movement disorder, extrapyramidal features, or developmental regression were recommended, including iron-sensitive sequences in diagnostic MRI studies of the brain, although iron, resembling the eye of the tiger sign, might be visible only later in the disease course.<sup>4</sup> The appearance of specific MRI patterns depends on the stage of the disease and the patient's age at evaluation.<sup>5</sup> In all PLAN forms, iron accumulation might be absent or subtle early in the disease course.

Optic atrophy can be seen in up to 85% of patients with PLA2G6 mutation.<sup>2</sup> A case series from India present a girl with rotatory and horizontal nystagmus with optic disc atrophy in both eyes and a boy with nystagmus with bilateral disc pallor.<sup>6</sup> Another study in 2021 presented a girl with bilateral optic nerve atrophy (without retinal hyperpigmentation).<sup>7</sup> An abnormal iron deposition follows a specific pattern of almost symmetrical involvement of the deep grey matter nuclei of the brain in NBIA.<sup>8</sup> Neurodegeneration with brain iron accumulation (NBIA) encompasses a group of inherited disorders that share the clinical features of an extrapyramidal movement disorder accompanied by varying degrees of intellectual disability and abnormal iron deposition in the basal ganglia (e.g., globus pallidus mainly).<sup>2</sup> A case study from Hungary showed the development of severe spastic paraparesis with moderate ataxia in two girls diagnosed with PLAN.<sup>7</sup>

Mutations in the calcium-independent phospholipase A2 gene *PLA2G6*, which plays a critical role in cell membrane phospholipid homeostasis, are responsible for PLAN. To date, all defective proteins in the NBIA disorders are known or suspected to be essential for mitochondrial function, but only two have a known role in iron homeostasis: ferritin light chain and ceruloplasmin.<sup>1</sup>

As whole-exome sequencing emerged, many cases of PLAN have been recognized.<sup>1</sup> Iron is an essential element for many brain functions<sup>9</sup>, particularly for myelination. However, high amounts of iron cause neural damage due to the ability of labile forms of iron to induce oxidative stress and provide a variety of neurodegenerative diseases.<sup>10</sup> NBIA involves several genetic disorders caused by mutations in genes directly involved in an iron metabolic pathway.<sup>9</sup> The four most common NBIA disorders include PKAN due to mutations in *PANK2*, phospholipase A2-associated neurodegeneration caused by a mutation in *PLA2G6*, mitochondrial membrane protein-associated neurodegeneration from mutations in *C19orf12*, and beta-propeller protein-associated neurodegeneration due to mutations in *WDR45*.<sup>1</sup>

Childhood-onset PLAN encompasses a more slowly progressive psychomotor disorder that is clinically distinct from the infantile and adult-onset PLAN forms. These children may initially be diagnosed with autism, eventually developing motor features; most have some degree of intellectual disability.<sup>1</sup> Movement disorders

may be alleviated using anticholinergics, tetrabenazine, and baclofen dopaminergic drugs. Surgical procedures, thalamotomy, pallidotomy, or deep brain stimulation might be beneficial in about 30% (for review of reported cases).<sup>11</sup> When the individual could no longer maintain an adequate diet orally, gastrostomy tube placement is indicated to prevent aspiration pneumonia.<sup>4</sup>

The possibility of chelating iron accumulated in specific brain regions remains an open question,<sup>10</sup> but there are three reports on chelating treatment in idiopathic NBIA patients with clinical benefit, thus unknown diagnosis may not necessarily prevent initiation of chelating treatment.<sup>10,12</sup> It is appropriate to offer genetic counselling (including discussion of potential risks to offspring and reproductive options) to young adults who are affected, are heterozygous, or are at risk of being heterozygous. When the NBIA-causing pathogenic variant(s) have been identified in an affected family member, prenatal testing for a pregnancy at increased risk is highly recommended.<sup>4</sup>

NBIA is a very rare case and it is very challenging to make the diagnosis. However, it is important to make a diagnosis as early as possible so that patients can get treated and monitored better (especially in ferritin levels as an iron deposition). This condition will also reduce the mortality rate, improve quality of life, and help us to estimate their prognosis better.

**Acknowledgement:** We wish to thank our staff in the Pediatric Ward, the doctors, nurses, and the administrator for granting us permission and necessary support to conduct our research.

**Disclosure:** The authors declare that (s) he has no relevant or material financial interests that relate to the research described in this paper. The authors declare no conflict of interest.

## REFERENCES

- Hayflick SJ, Kurian MA, Hogarth P. Neurodegeneration with brain iron accumulation. *Handb Clin Neurol*. 2018;147:293-305. doi: 10.1016/B978-0-444-63233-3.00019-1.
- Hogarth P. Neurodegeneration with Brain Iron Accumulation: Diagnosis and Management. *J Mov Disord*. 2015;8:1-13.
- Clarke JTR. A Clinical Guide to Inherited Metabolic Diseases. Cambridge University Press: Cambridge, 2005 doi: 10.1017/CBO9780511544682
- Gregory A, Hayflick S. Neurodegeneration with Brain Iron Accumulation Disorders Overview. 1993.
- Lee J-H, Yun JY, Gregory A, Hogarth P, Hayflick SJ. Brain MRI Pattern Recognition in Neurodegeneration With Brain Iron Accumulation. *Front Neurol*. 2020;11. doi:10.3389/fneur.2020.01024
- Kulkarni SD, Garg M, Sayed R, Patil VA. Two unusual cases of PLA2G6-associated neurodegeneration from India. *Ann Indian Acad Neurol*. 2016;19:115.
- Toth-Bencsik R, Balicza P, Varga ET, Lengyel A, Rudas G, Gal A, et al. New Insights of Phospholipase A2 Associated Neurodegeneration Phenotype Based on the Long-Term Follow-Up of a Large Hungarian Family. *Front Genet*. 2021;12. doi:10.3389/fgene.2021.628904
- Lehéricy S, Roze E, Goizet C, Mochel F. MRI of neurodegeneration with brain iron accumulation. *Curr Opin Neurol*. 2020;33:462-473.
- Dusek P, Jankovic J, Le W. Iron dysregulation in movement disorders. *Neurobiol Dis*. 2012;46:1-18.
- Abbruzzese G, Cossu G, Balocco M, Marchese R, Murgia D, Melis M, et al. A pilot trial of deferiprone for neurodegeneration with brain iron accumulation. *Haematologica*. 2011;96:1708-1711.
- Schneider SA. Neurodegeneration with Brain Iron Accumulation. *Curr Neurol Neurosci Rep*. 2016;16:9.
- Kwiatkowski A, Ryckewaert G, Jissendi Tchoufo P, Moreau C, Vuillaume I, et al. Long-term improvement under deferiprone in a case of neurodegeneration with brain iron accumulation. *Parkinsonism Relat Disord*. 2012;18:110-112.

# pla2g6-aSSOCIATED

---

## ORIGINALITY REPORT

---

16%

SIMILARITY INDEX

10%

INTERNET SOURCES

14%

PUBLICATIONS

%

STUDENT PAPERS

---

## PRIMARY SOURCES

---

- 1** Mette Ejrnaes, Matthias G. von Herrath, Urs Christen. "Cure of Chronic Viral Infection and Virus-Induced Type 1 Diabetes by Neutralizing Antibodies", Clinical and Developmental Immunology, 2006  
Publication 1%
- 2** [www.dovepress.com](http://www.dovepress.com)  
Internet Source 1%
- 3** [www.researchgate.net](http://www.researchgate.net)  
Internet Source 1%
- 4** [dspace.sctimst.ac.in](http://dspace.sctimst.ac.in)  
Internet Source 1%
- 5** [pure.eur.nl](http://pure.eur.nl)  
Internet Source 1%
- 6** [sportedu.org.ua](http://sportedu.org.ua)  
Internet Source 1%
- 7** [perpustakaan.poltekkes-malang.ac.id](http://perpustakaan.poltekkes-malang.ac.id)  
Internet Source 1%
- 8** [pubmed.ncbi.nlm.nih.gov](http://pubmed.ncbi.nlm.nih.gov)  
Internet Source

1 %

9

Limin Li, Choong Yi Fong, Chee Geap Tay, Sok Kun Tae, Hisato Suzuki, Kenjiro Kosaki, Meow-Keong Thong. "Infantile neuroaxonal dystrophy in a pair of Malaysian siblings with progressive cerebellar atrophy: Description of an expanded phenotype with novel PLA2A6 variants", *Journal of Clinical Neuroscience*, 2019

Publication

1 %

10

Celanie K. Christensen, Laurence Walsh. "Movement Disorders and Neurometabolic Diseases", *Seminars in Pediatric Neurology*, 2018

Publication

1 %

11

Sen Guo, Liu Yang, Huijie Liu, Wei Chen, Jinchen Li, Ping Yu, Zhong Sheng Sun, Xiang Chen, Jie Du, Tao Cai. "Identification of Novel Compound Mutations in PLA2G6-Associated Neurodegeneration Patient with Characteristic MRI Imaging", *Molecular Neurobiology*, 2016

Publication

1 %

12

[dspace.library.uvic.ca](https://dspace.library.uvic.ca)

Internet Source

1 %

13 "The  $\alpha$ ,  $\beta$ ,  $\delta$  and  $\gamma$  Thalassaemias and Related Conditions", Wiley, 2006 <1 %  
Publication

---

14 Susanne A. Schneider. "Neurodegeneration with brain iron accumulation", Elsevier BV, 2020 <1 %  
Publication

---

15 TobiasB. Haack, Erika Ignatius, Javier Calvo-Garrido, Arcangela Iuso et al. "Absence of the Autophagy Adaptor SQSTM1/p62 Causes Childhood-Onset Neurodegeneration with Ataxia, Dystonia, and Gaze Palsy", The American Journal of Human Genetics, 2016 <1 %  
Publication

---

16 [www.unboundmedicine.com](http://www.unboundmedicine.com) <1 %  
Internet Source

---

17 "NADPH Oxidases Revisited: From Function to Structure", Springer Science and Business Media LLC, 2023 <1 %  
Publication

---

18 Derya Guclu, Elif N. Unlu, Hayri Ogul. "Membranous Nasopharyngeal Stenosis: Case Report", Ear, Nose & Throat Journal, 2022 <1 %  
Publication

---

19 Renata Toth-Bencsik, Peter Balicza, Edina Timea Varga, Andras Lengyel, Gabor Rudas, <1 %



Aniko Gal, Maria Judit Molnar. "New Insights of Phospholipase A2 Associated Neurodegeneration Phenotype Based on the Long-Term Follow-Up of a Large Hungarian Family", *Frontiers in Genetics*, 2021

Publication

---

20

[onlinelibrary.wiley.com](https://onlinelibrary.wiley.com)

Internet Source

<1 %

---

21

"Acute myeloid leukaemia with tell-tale computed tomography scans", *Postgraduate Medical Journal*, 11/1/2001

Publication

<1 %

---

22

Claire MacIver, Dafydd Morgan, Kathryn J. Peall. "Molecular basis of movement disorders", Elsevier BV, 2020

Publication

<1 %

---

23

Dusek, P.. "Iron dysregulation in movement disorders", *Neurobiology of Disease*, 201204

Publication

<1 %

---

24

Macerollo, A., R. Perry, M. Stamelou, A. Batla, A. A. Mazumder, M. E. Adams, and K. P. Bhatia. "Susceptibility-weighted imaging changes suggesting brain iron accumulation in Huntington's disease: an epiphenomenon which causes diagnostic difficulty", *European Journal of Neurology*, 2014.

Publication

---

<1 %

25 Schneider, Susanne A.. "Neurodegeneration with Brain Iron Accumulation", Rosenberg s Molecular and Genetic Basis of Neurological and Psychiatric Disease, 2015. <1 %

Publication

---

26 [www.spandidos-publications.com](http://www.spandidos-publications.com) <1 %

Internet Source

---

27 [www.thieme-connect.de](http://www.thieme-connect.de) <1 %

Internet Source

---

28 Frauke Hornemann, Diana Le Duc, Christian Roth, Roland Pfäffle, Dagmar Huhle, Andreas Merkenschlager. "Childhood Dystonia-Parkinsonism Following Infantile Spasms—Clinical Clue to Diagnosis in Early Beta-Propeller Protein-Associated Neurodegeneration", Neuropediatrics, 2019 <1 %

Publication

---

29 J. Waller, L. A. V. Marlow, J. Wardle. "The association between knowledge of HPV and feelings of stigma, shame and anxiety", Sexually Transmitted Infections, 2006 <1 %

Publication

---

30 Steven Nobile, Salini Thulasirajah, Sunita Venkateswaran. "A Novel c19orf12 Mutation in Mitochondrial Membrane Protein-Associated Neurodegeneration", Canadian <1 %

31

Jillian Alderson, Partha S. Ghosh. "Clinical Reasoning: Seven-year-old girl with progressive gait difficulties", *Neurology*, 2020

Publication

<1 %

32

Jinghui Xu, Xiaofei He, Yunqi Xu, Xi Chen, Mingyue Li, Liying Zhang, Xiaodi Fu, Mengqiu Pan, Qun Wang, Xiquan Hu. "Characteristics of systemic inflammation and brain iron deposition in Parkinson's disease patients", *Annals of Clinical and Translational Neurology*, 2022

Publication

<1 %

33

Susanne A. Schneider. "Neurodegeneration with Brain Iron Accumulation", *Current Neurology and Neuroscience Reports*, 2016

Publication

<1 %

Exclude quotes  On

Exclude matches  Off

Exclude bibliography  On

# pla2g6-aSSOCIATED

---

GRADEMARK REPORT

---

FINAL GRADE

GENERAL COMMENTS

**/100**

---

PAGE 1

---

PAGE 2

---

PAGE 3

---

PAGE 4

---