

Dissolved organic matter and its correlation with phytoplankton abundance for monitoring surface water quality

by Sucipto Hariyanto

Submission date: 13-Dec-2022 05:28PM (UTC+0800)

Submission ID: 1980073802

File name: b2-GJESM.pdf (945.89K)

Word count: 8523

Character count: 47356



ORIGINAL RESEARCH PAPER

9
Dissolved organic matter and its correlation with phytoplankton abundance for monitoring surface water quality

O.H. Cahyonugroho^{1,2}, S. Hariyanto^{3,*}, G. Supriyanto⁴

¹Mathematics and Natural Sciences Doctoral Program, Universitas Airlangga, Kampus C Mulyorejo, Surabaya, Indonesia

²Department of Environmental Engineering, Universitas Pembangunan Nasional Veteran Jawa Timur, Raya Rungkut Madya, Surabaya, Indonesia

³Department of Biology, Universitas Airlangga, Kampus C Mulyorejo, Surabaya, Indonesia

⁴Department of Chemistry, Universitas Airlangga, Kampus C Mulyorejo, Surabaya, Indonesia

22
ARTICLE INFO

Article History:

Received 04 April 2021

Revised 17 July 2021

Accepted 20 August 2021

Keywords:

Correlation

Dissolved organic matter

Fluorescence spectroscopy

Phytoplankton

77
ABSTRACT

BACKGROUND AND OBJECTIVES: Dissolved organic matter has a fundamental role in supporting phytoplankton abundance and growth in aquatic environments. However, these organisms produce dissolved organic matter with varied quantities or characteristics depending on the nutrient availability and the species composition. Therefore, this study aims to assess the characteristic of dissolved organic matter on surface water and its correlation with phytoplankton abundance for monitoring water quality.

METHODS: The sample was obtained at four Kali Surabaya river stations for further dissolved organic matter analysis and phytoplankton species analysis. The analysis was presented through bulk parameters of total organic, ultraviolet at 254 nm wavelength, specific ultraviolet absorbance value, and fluorescence spectroscopy using excitation-emission matrices with fluorescence regional integration analysis.

FINDINGS: The results showed the bulk parameters of dissolved organic matter at all stations were significantly different, as Station 1 and 2 were higher, while 3 and 4 had a lower concentration. Furthermore, the fluorescence spectroscopy identified four components of dissolved organic matter at all stations, namely aromatic proteins-like, humic acid-like, soluble microbial by-products-like, and fulvic acid-like, which is the unit of fluorescence spectra in arbitrary unit. Also, stations 1 and 2 were grouped in the high percentage fluorescence regional integration of humic substance (fulvic acid-like and humic acid-like), while 3 and 4 were classified in the high percentage fluorescence regional integration of non-humic substances (aromatic proteins-like and soluble microbial by-products-like).

CONCLUSION: The main phytoplankton species, namely Plectonema sp., Pinularia sp., Nitzschia sp., Navicula sp., had the highest abundance at Stations 1, 3, and 4, respectively. A strong correlation between dissolved organic matter analysis and phytoplankton abundance led to the usage of these methods for monitoring surface water quality.

DOI: 10.22034/gjesm.2022.01.0*

2
© 2022 GJESM. All rights reserved.



NUMBER OF REFERENCES

55



NUMBER OF FIGURES

8



NUMBER OF TABLES

2

*Corresponding Author:

Email: sucipto-h@fst.unair.ac.id

Phone: +62821 3907 0704

ORCID: 0000-0002-0712-9259

Note: Discussion period for this manuscript open until April 1, 2022 on GJESM website at the "Show Article."

INTRODUCTION

Human, industrial and agricultural activities have significantly changed aquatic ecosystems due to high organic and inorganic wastewater discharge. This runoff has appeared in the eutrophication of rivers and tributary (Conley *et al.*, 2009; Bhattacharya and Osburn, 2017) causing blooming phytoplankton and consequently, and the environmental issues (Paerl *et al.*, 2008; Heisler *et al.*, 2008; Biggs, 2000). It is eminent that phytoplankton community dynamics (i.e., taxonomic composition, abundance, and biomass) regard the quantity of inorganic phosphorus and nitrogen in the aquatic surrounding (Cao *et al.*, 2016; Cuvin-Aralar *et al.*, 2004). Furthermore, the impact of the organic pollutants contributes to the quantity or quality of dissolved organic matter in surface water. Allochthonous and autochthonous with effluent organic matter are the source of dissolved organic matter (DOM) in the surface water, since allochthonous could be generated from the upstream, midstream and the downstream. The upstream was found to be covered with perennial vegetation; the midstream is used for agriculture and covered with least forest; the downstream was mainly used for residential and utilized for different forms of agriculture (Dumago *et al.*, 2018). In addition, biogeochemical cycles will affect the quality and quantity of DOM from the surrounding environment. Also, DOM has an essential role in supporting phytoplankton abundance and growth in aquatic surroundings (Kissman *et al.*, 2017; Burpee *et al.*, 2016) due to its usage as an organic nutrient source. It can be used by these micro-organisms as a source of nitrogen, phosphorus, and carbon when inorganic phosphorus and nitrogen are unavailable (Burpee *et al.*, 2016). The primary producers were proposed as an important source that influences its composition in surface water (Biddanda and Benner, 1997). Conversely, DOM can be produced by phytoplankton (Thornton, 2014), with varied characteristics and quantity which are mostly dependent on nutrient availability (Myklestad, 1995), composition of phytoplankton type (Biddanda and Benner, 1997), and bacterial interaction (Ramanan *et al.*, 2016). According to previous studies, various types of DOM have been found and released by different taxonomic groups of phytoplankton (Fukuzaki *et al.*, 2014; Romera-Castillo *et al.*, 2010). Phytoplankton production, microbial metabolism, residue from

microbial degradation after their death and other processes, release protein-like materials as one of DOM components (Liu *et al.*, 2019; Mangal *et al.*, 2016). The fluorescence spectroscopy fingerprints, identified the signals of protein-like and humic-like materials released from extracellular *Microcystis aeruginosa* (Ziegmann *et al.*, 2010). In addition, the DOM which is closely related to the phytoplankton community dynamics, mainly consist of humic-like and protein-like materials (Suksomjit *et al.*, 2009; Zhang *et al.*, 2014) and exhibits their blooming (Altman and Paerl, 2012; Hounshell *et al.*, 2017). The qualitative and quantitative methods for characterizing organic matter analysis have been implemented to clarify the types of DOM transformation through the treatment process or in source water and their following removal. For example, using the bulk parameters of dissolved organic carbon (DOC) concentration, UV/vis at 254 nm wavelength to measure the aromaticity degree of organic matter and specific ultraviolet absorbance (SUVA) (Edzwald *et al.*, 1985; Lai *et al.*, 2015; Hidayah *et al.*, 2017), high-performance size exclusion chromatography (HPSEC) with ultraviolet detector (UVD) or an on-line organic carbon detector (OCD) (Jiao *et al.*, 2014; Lai *et al.*, 2015), fluorescence spectroscopy as well as fluorescence excitation-emission matrices (FEEM) (Hidayah *et al.*, 2017; Ho *et al.*, 2019). These procedures have been previously applied in observing the contribution of phytoplankton degradation to DOM as chromophoric by using fluorescent spectroscopy (Zhang *et al.*, 2009), to characterize DOM excreted by phytoplankton (Chari *et al.*, 2013), and to reveal its relationship with the community (Liu *et al.*, 2021). The use of bulk parameters and fluorescence spectroscopy methods, simultaneously for characterizing organic matter considering the phytoplankton abundance, have been rarely observed. Therefore, resulting in poor implementation of optimal water quality control measures. Furthermore, using these techniques to characterize organic matter and its correlation with phytoplankton abundance for monitoring surface water quality seems to urgently need implementation. Hence, this study aims to assess the characteristic of dissolved organic matter on surface water, as well as its correlation with phytoplankton abundance using the bulk parameters and fluorescence spectroscopy to monitor surface water quality. This study was conducted in the Kali Surabaya River, Surabaya, Indonesia, in 2021.

MATERIALS AND METHODS

Data collection

This study used water from the Kali Surabaya River in Surabaya city, a surface water source for public supply. The position of station 1 to station 4 is as shown in Table 1 and Fig. 1. The sample was collected twice per week from January to March 2021, and the

DOM analysis, as well as phytoplankton abundance was measured through the bulk parameters and fluorescence spectroscopy. The parameters include TOC, UV₂₅₄, SUVA value, while fluorescence spectroscopy identified aromatic proteins-like (AP-like), humic acid-like (HA-like), soluble microbial products-like (SMPs-like), and fulvic acid-like (FA-like).

Table 1: The study sampling location characteristics

No.	Sampling station	Coordinate	Climate	Environmental condition
1	Rolag Telu dam	7°26'40" S 112°27'25" E	- Tropical - Sunny weather - Temperature 29°C	- Downstream of the Brantas river - Stagnant water - No residential
2	Wringin Anom district	7°24'21" S 112°30'27" E	- Tropical - Sunny weather - Temperature 29°C	- Agricultural land - There are residential - There are domestic activities (bathing, washing, latrine)
3	Cangkir district	7°22'04" S 112°37'47" E	- Tropical - Sunny weather - Temperature 29°C	- Industrial area - Densely populated - Temporary dump site
4	Karang Pilang drinking water company inlet	7°20'54" S 112°40'51" E	- Tropical - Sunny weather - Temperature 29°C	- Industrial area - There are residential - There are domestic activities (bathing, washing, latrine)



Fig. 1: Geographic location of the study area in the Kali Surabaya River, Indonesia

As this study targeted on dissolved organic matter in source water, 0.45 m filter paper was used to filter the collected source water (Millipore Corporation, USA) to eliminate suspended particles before analysis the parameters. Furthermore, the ultraviolet absorbance at 254 nm (UV_{254}) and total organic carbon (TOC) concentration of the water was measured for common physicochemical characteristics based on Standard Methods procedures (APHA *et al.*, 2012).

TOC was quantified using TOC-500 Model (Shimadzu, Japan), while UV_{254} was detected by UV/vis spectrophotometer Model U-2001 (Hitachi, Japan). The SUVA value showed the dissolved organics were contained in hydrophilic fraction as calculated from measurements of UV_{254} and DOC samples. Perkin Elmer LS-55 spectrometer with excitation-emission wavelength pair was used to measure the fluorescence in the source water. Moreover, the excitation-emission matrix (EEM) were resulted for each sample by skimming overexcitation (Ex) wavelengths between 230 and 400 nm at an interval of 10 nm with emission (Em) wavelengths between 300 and 547.5 nm at 0.5 nm interval (Murphy *et al.*, 2013; Hidayah *et al.*, 2017). Counting of fluorescence regional integration (FRI) analysis was used to provide the cumulative fluorescence reaction of organic matter with identical characteristic in selected regions by integration beneath EEMs (Chen *et al.*, 2003). The phytoplankton sampling was conducted using a plankton net mesh size 60 mm as much as 100 liters. Meanwhile, its identification was carried out in the laboratory using a binocular microscope with 10 x 10 magnification (AmScope B100B-MS). Also, the abundance was calculated using Sedgewick-Rafter Counting Chamber for three replications (Marienfeld GmbH).

Analytical framework

The Kolmogorov-Smirnov, one-way Analysis of Variance (ANOVA), and Pearson correlations were applied utilizing SPSS Statistics 17.0 software (IBM, Armonk, NY, USA). The Kolmogorov-Smirnov test opposed the empirical cumulative distribution function of bulk parameters data and the results of FRI analysis with the distribution expected when the data were standard. When the observed difference is adequately significant, the test will reject the hypothesis of bulk parameters data, the results of FRI analysis data, and phytoplankton abundance

normality. However, when the p-value of this test is less than 5%, it can be concluded that the bulk parameters data, the results of FRI analysis data, and phytoplankton abundance are non-normal. The one-way ANOVA was applied to determine whether any statistically significant differences between the means of bulk parameters and the results of FRI data. It was also used to determine at least two groups of the parameters data as the results of FRI analysis were different. In addition, The Pearson correlation coefficients measured the strength of the linear relationship variables among TOC, UV_{254} , SUVA value, AP-like, FA-like, SMPs-like, HA-like, and phytoplankton abundance.

RESULTS AND DISCUSSION

The bulk parameters of dissolved organic matter in the river segment.

The distribution data for the bulk parameters of dissolved organic matter in the river segment as tested by Kolmogorov-Smirnov showed the TOC concentration ($P > 0.15$), UV_{254} concentration ($P > 0.15$), and SUVA value ($P > 0.15$) was normal. Furthermore, the normal distribution data was performed using ANOVA testing to know the differences in mean concentrations of TOC and UV_{254} , as well as SUVA value. ANOVA with the Tukey 95% confidence interval also determined whether there were statistically significant or non-significance differences. The results indicated statistically significant differences in the mean concentration of the bulk parameters among the river segment with a p-value of 0.011, 0.001, and 0.004 in TOC, UV_{254} , and SUVA values, respectively. Moreover, enough evidence was provided, which concluded that the average of the bulk organic matter parameters at all stations was significantly different. The Tukey analysis classified the bulk parameters concentration at each station into two main groups. Station 1 and 2 were grouped in the high concentration, while 3 and 4 were classified in the bulk parameters' low concentration, which means the former had averages significantly different from the latter. The average TOC concentration for stations 1 and 2 was about a value 10.1-11.7 mg/L, while 3 and 4 were between 9.8-10.9 mg/L. The average UV_{254} concentration for stations 1 and 2 was in the range of 10.1-11.7 mg/L, while 3 and 4 were in between 9.8-10.9 mg/L. The average UV_{254} concentration for stations 1 and 2 was in the range of

0.65-0.8/cm, while 3 and 4 were 0.39-0.65/cm. The average SUVA concentration of stations 1 and 2 was 5.3-6.4 L/mg/m, while 3 and 4 were 4.0-5.3 L/mg/m. Furthermore, statistical box plot analysis presented the pattern for the bulk parameters of dissolved organic matter in the surface water. Figs. 2, 3, and 4 show a box plot of the average concentration of TOC, UV₂₅₄, and average SUVA value respectively. Fig. 2 shows that the highest average TOC concentration occurred at Station 2 with a varying range. In comparison, the lowest average TOC concentration with a low range occurred at station 4. In addition, the results showed the average concentration from the highest to the lowest was found at stations 2, 1, 3, and 4. The surface water used in this study contained 7.36 – 15.50 mg/L TOC concentration, which was typically associated with the DOC range. River water has a typical concentration about 2 to 10 mg/L of dissolved organic carbon, which was much higher than groundwater and seawater. Variation in average concentrations of TOC indicated various physical or ecological drivers, chemical processes, spatial changes, which can significantly affect on organic matters dynamics (Maie et al., 2006). The organic matter compositional changes could be induced by biophysical controls, such as changes in composition, which likely result in bioavailability, photoreactivity,

12
nutrient cycling, or chelating capacity and can affect carbon fluxes consequentially ecological drivers not accounted for (Jaffe, 2008). In addition, the hydrology dynamics of surface runoff contributed to the surface water stream (Hood et al., 2006).

Fig. 3 describes the concentration of UV₂₅₄, which corresponded to the organic compounds with an aromatic structure, double bonds of C=C (Matilainen et al., 2011). In this study, the concentration of UV₂₅₄ for surface water was 0.148 – 1.524/cm, which was within the typical range of river (0.085 – 0.4/cm) (Edzwald et al., 1985). The results showed that the average highest aromatic compound was detected at Station 1, while Station 4 had the average lowest concentration. Therefore, Station 1 contained higher humic matter with conjugated C=C double structural bonds than the others. Meanwhile, Station 4 contained lower humic matter than the others. As well known, organic compounds of humic matter contain unsaturated carbon bonds (double or triple) or aromatic rings in their molecular structure. Hence, it absorbs an amount of UV light through the water sample (Her et al., 2002).

Fig. 4. Shows the hydrophobicity of organic matter characteristic or specific UV-absorbance (SUVA) value. The results revealed a value between 1.45 – 9.36 L/mg/m. However, it was mostly higher

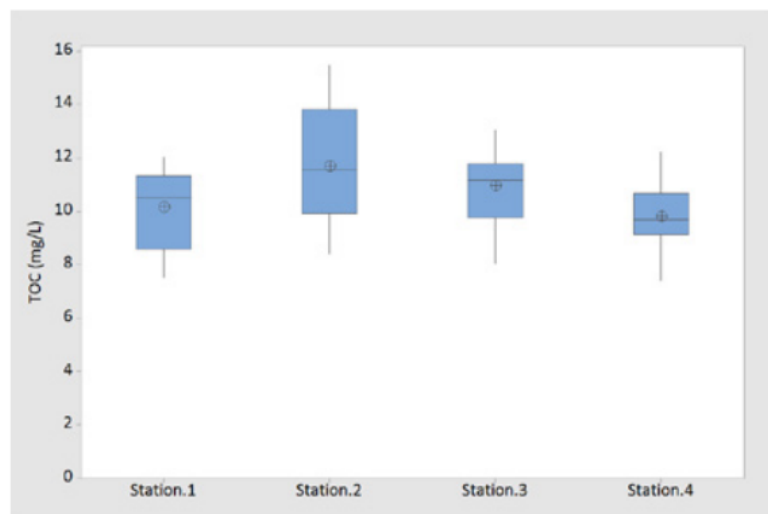


Fig. 2: The average TOC concentration in the river segment at various stations.

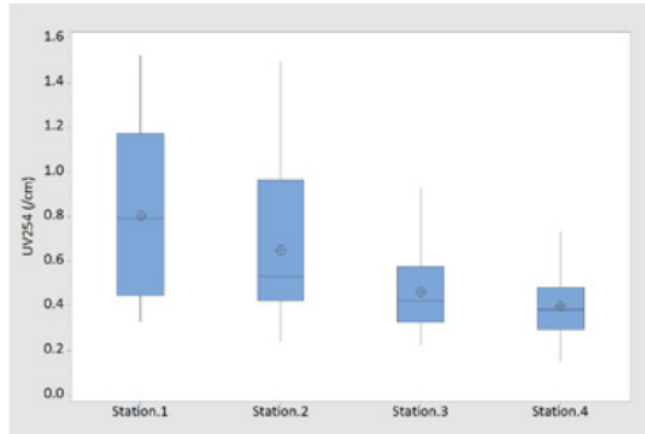


Fig. 3: The average UV_{254} concentration in the river segment at various station

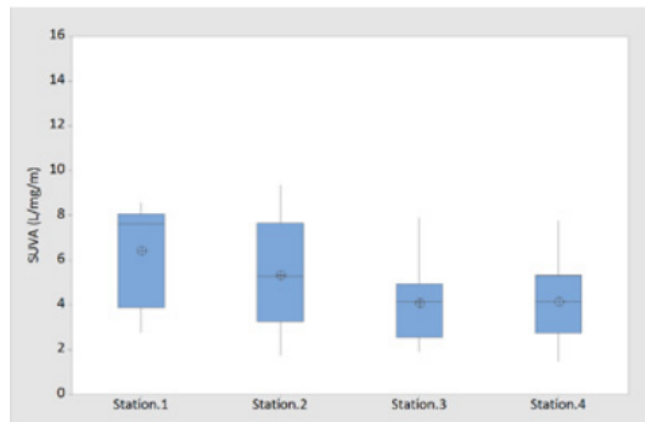


Fig. 4: The average SUVA value in the river segment at various station4

than 4 along the river segment, which means that the organic matter is mainly consists of humic, hydrophobic, and high molar mass organic material. According to Edzwald and Tobiason (2011), SUVA is a parameter of the organic matter composition in water. Source water with SUVA values ≥ 4 indicated that natural organic matter composed mainly of humic or hydrophobic matter, while those < 2 contained mainly non-humic or hydrophilic natural organic matter. The results were consistent with the high concentration of UV_{254} (0.148 – 1.524/cm). The

values typically ranged from 1.0 to 6.0 L/mg/m for surface water. However, values greater than 6.0 were revealed for interstitial waters dominated by a solid terrestrial signature (Jaffe et al., 2008). According to previous studies, these higher values can be as a result of the absorption at 254 nm from colloids, iron, or other components in the sample (Weishaar et al., 2003; Hudson et al., 2007). Combining the bulk parameters of TOC, UV_{254} , and SUVA value led to characterize the organic matter in the river. Station 2 was mainly composed of the highest TOC with lower

aromatic and hydrophobic than 1, and vice versa. Also, station 4 was mainly composed of lower bulk parameters than 3. Therefore, 2 contained more aliphatic organic matter that does not absorb at 254 nm than the others. The lower SUVA value among all stations indicated the mixtures of aquatic humics, hydrophobic and hydrophilic, and molecular weights of organic matter.

75
Characteristic of fluorescence dissolved organic matter in the river segment through volumetric fluorescence distribution.

Fig. 5. Illustrates the fluorescence excitation-emission matrices (FEEMs) for dissolved organic matter in the river segment at a different station, taken on the first week sampling time. Dissolved organic carbon was classified into four regions based on its excitation/emission wavelengths (Ex/Em), namely Region 1 indicated the aromatic proteins-like (AP-like), such as tyrosine and tryptophan, at Ex/Em <250 nm/<350 nm. Region 2 identified the fulvic acid-like (FA-like) substances at Ex/Em <250 nm/>380 nm, Region 3 was corresponded to the soluble microbial

20
by products-like (SMPs-like) substances at Ex/Em 250-280 nm/<380 nm, while Region 4 was identified as the humic acid-like (HA-like) substances with Ex/Em >280 nm/>380 nm (Chen et al., 2003).

This study shows that the fluorescence component from FEEM analysis has consistent results with previous studies (Her et al., 2003; Yao et al., 2016; Moradi et al., 2018; Hidayah et al., 2020). Generally, HA-like and FA-like correlated with aromatic compounds. They mainly exist as carboxylic and phenolic functional groups in natural dissolved organic matter. These fluorescence structures are mostly present as a significant percentage of humic substances, which typically represent over 50% of natural organic matter (Shon et al., 2012). In addition, source water may contain protein-like materials which microbial activities can generate. The amount, characteristics, and properties of dissolved organic matter in the aquatic system depend on their origin and environmental biochemical cycles. Sources of organic matter are classified as allochthonous (generated from a terrestrial watershed) and autochthonous (produced by organism activities,

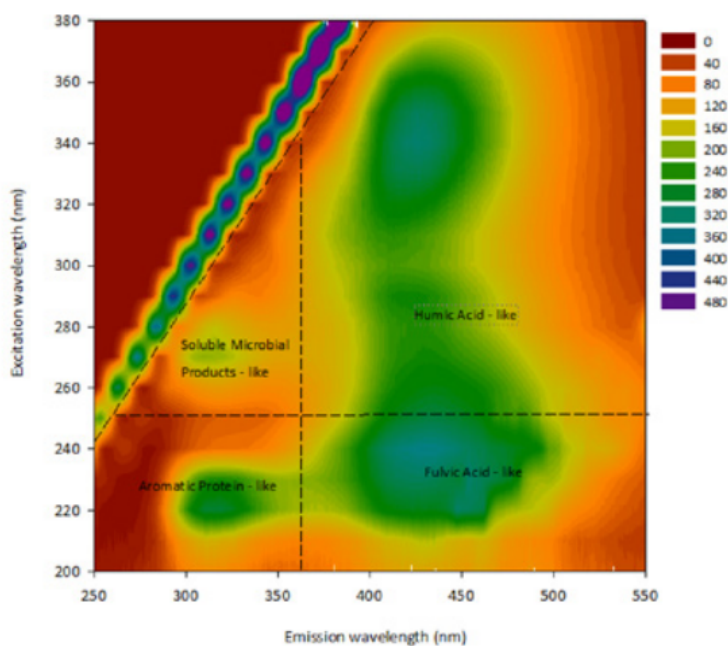


Fig. 5: Spectrum of fluorescence spectrometer analysis in the river segment

Dissolved organic matter and its correlation

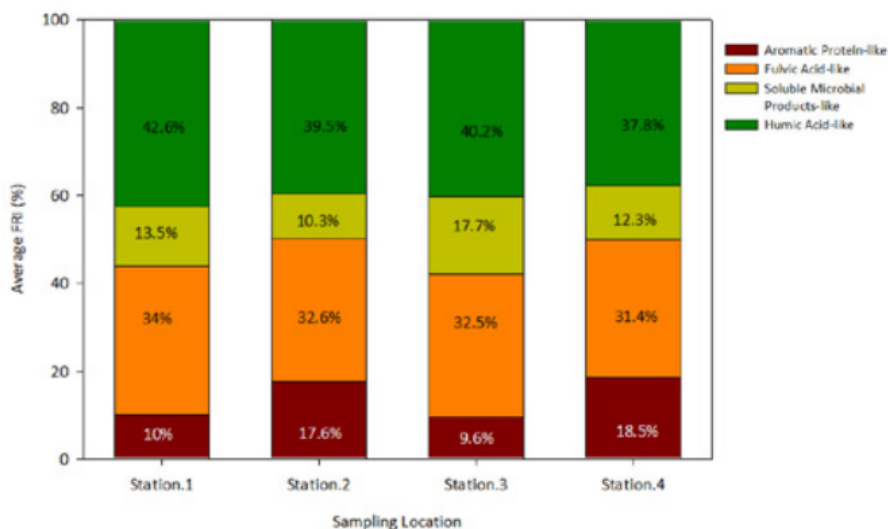


Fig. 6: FRI distribution of fractionated organic matter from the various river segment

such as phytoplankton activities) (Chari *et al.*, 2013; Zhang *et al.*, 2009; Haraguchi *et al.*, 2019). Terrestrial watershed is mainly composed of humic substances such as fulvic and humic acids as well as humin, which are primarily hydrophobic and rich in aromatic carbon. The autochthonous source material is microbially derived organic, such as algal-derived and effluent organic matter (Kelso and Baker, 2020). Fig. 6 showed the percentage fluorescence response, which was calculated by Fluorescence Regional Integration (FRI) method. The percentage of fluorescence distribution indicated the four fractions quantity of fluorescence organic matter. This study classified the fraction into humic and non-humic substances-like. The first was represented by Region 2 (FA-like) and 4 (HA-like), while the second one by Region 1 (AP-like) and 3 (SMPs-like). Firstly, the results showed the highest total percentage of FRI in Region 2 and 4 was at Station 1 (76.6%), and the lowest total percentage for humic substances-like was at Station 4 (69.2%). Both components are classified as humic substances and are mainly composed of aromatic compounds with high to medium molecular weight (Watson *et al.*, 2018; Hua *et al.*, 2020). Their total percentage FRI showed a consistent UV_{254} concentration and SUVA value. Furthermore, Station 1 had the highest bulk parameters, while 4 had the lowest. Secondly,

the highest total percentage FRI of Region 1 and 3 (30.8%) was identified at Station 4, with the lowest at 1 (23.4%). This indicated that Station 4 contained abundant proteins substances and microbial-like fluorescence than the others and followed the lowest SUVA value of Station 4 with the highest for Station 1. Region 1 and 3 correlated with high molecular weight protein-like, which had chemical properties related to aromatic amino acids, tryptophan or tyrosine-like (Yamashita *et al.*, 2008; Hua *et al.*, 2020) and low molecular weight microbial humic-like as well as less conjugated double bond organic matter (Nguyen *et al.*, 2013; Hua *et al.*, 2020).

The distribution data for the fluorescence of dissolved organic matter in the river segment was tested by Kolmogorov–Smirnov and the bulk parameters. The results showed distribution data for percentage FRI of Region 1 (AP-like), 2 (FA-like), 3 (SMPs-like), and Region 4 (HA-like) with $P > 0.000$, 0.007, 0.000 and 0.013 respectively were normal. Furthermore, Analysis of Variance (ANOVA) testing was carried out to determine the differences in mean percentage FRI for each region. The statistical analysis ANOVA One-Way with the Tukey 95% confidence interval also determined whether statistically significant or non-significance differences in percentage FRI of AP-like, FA-like, SMPs-like, and HA-

like among all stations. The results showed statistically significant differences in the mean percentage FRI of all fluorescence organic fractions at all stations with $p = 0.000, 0.007, 0.000,$ and 0.013 in AP-like, FA-like, SMPs-like, HA-like, respectively. The results provided enough evidence to conclude that the mean percentage FRI of all fluorescence organic fractions at all stations was significantly different. Moreover, the Tukey analysis classified their percentage FRI at each station into two main groups. Station 1 and 2 were grouped in the high percentage FRI of humic substance-like (FA-like and HA-like), while 3 and 4 were classified in the low percentage. This means the former had an average percentage FRI of FA-like and HA-like, which were significantly different from the latter. In addition, stations 3 and 4 were grouped in the high percentage FRI of non-humic substance-like

(AP-like and SMPs-like), while stations 3 and 4 were grouped in the low percentage. This showed both had average percentage FRI of AP-like and SMPs-like, which were significantly different from stations 1 and 2. Moreover, statistical box plot analysis presented the pattern of the fluorescence organic matter in the river segments. Fig. 7a to 7d presented box plot with average percentage FRI of the organic matter. Firstly, a comparison among all fluoresces organic compounds showed the average FRI of HA-like was much higher and much lower for SMPs-like than the others. However, HA-like, located at Region 4 of the fluorescence spectra, had the most extensive range of excitation and emission wavelengths. Therefore, the humic acid substances-like region had the most extensive volume distribution of FRI when compared to others (Chen *et al.*, 2003). Meanwhile, SMPs-

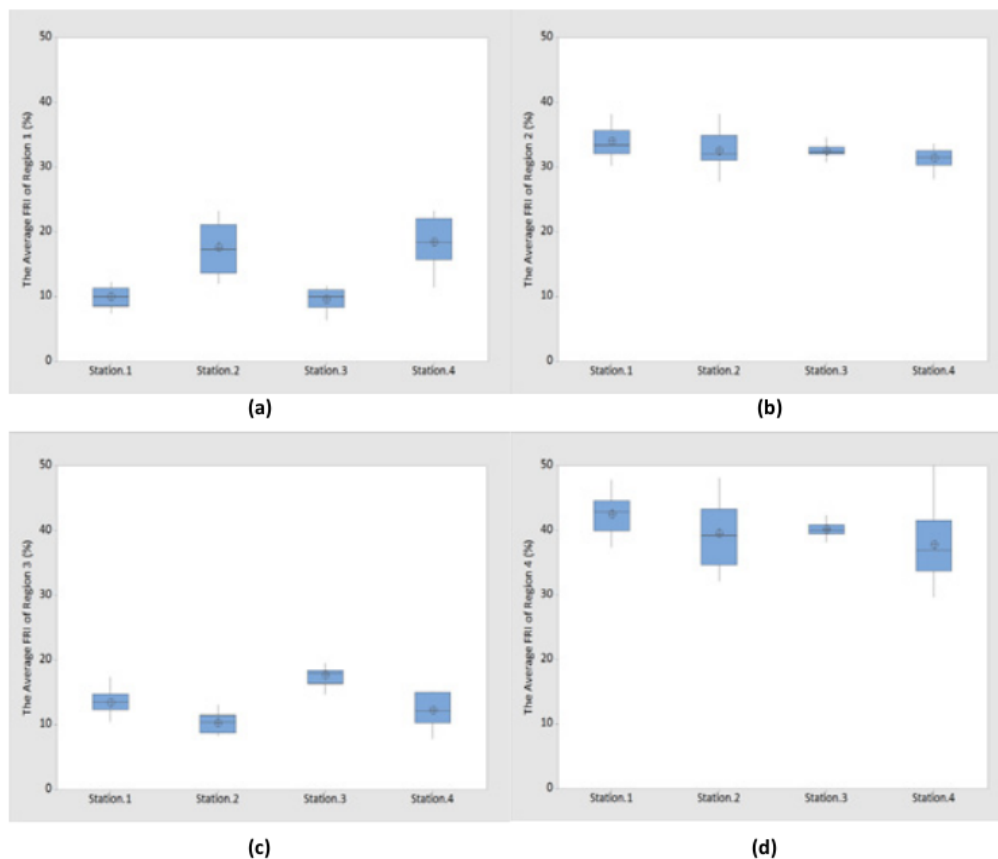


Fig. 7: The average percentage FRI of fluorescence organic matter in the river segment at various stations

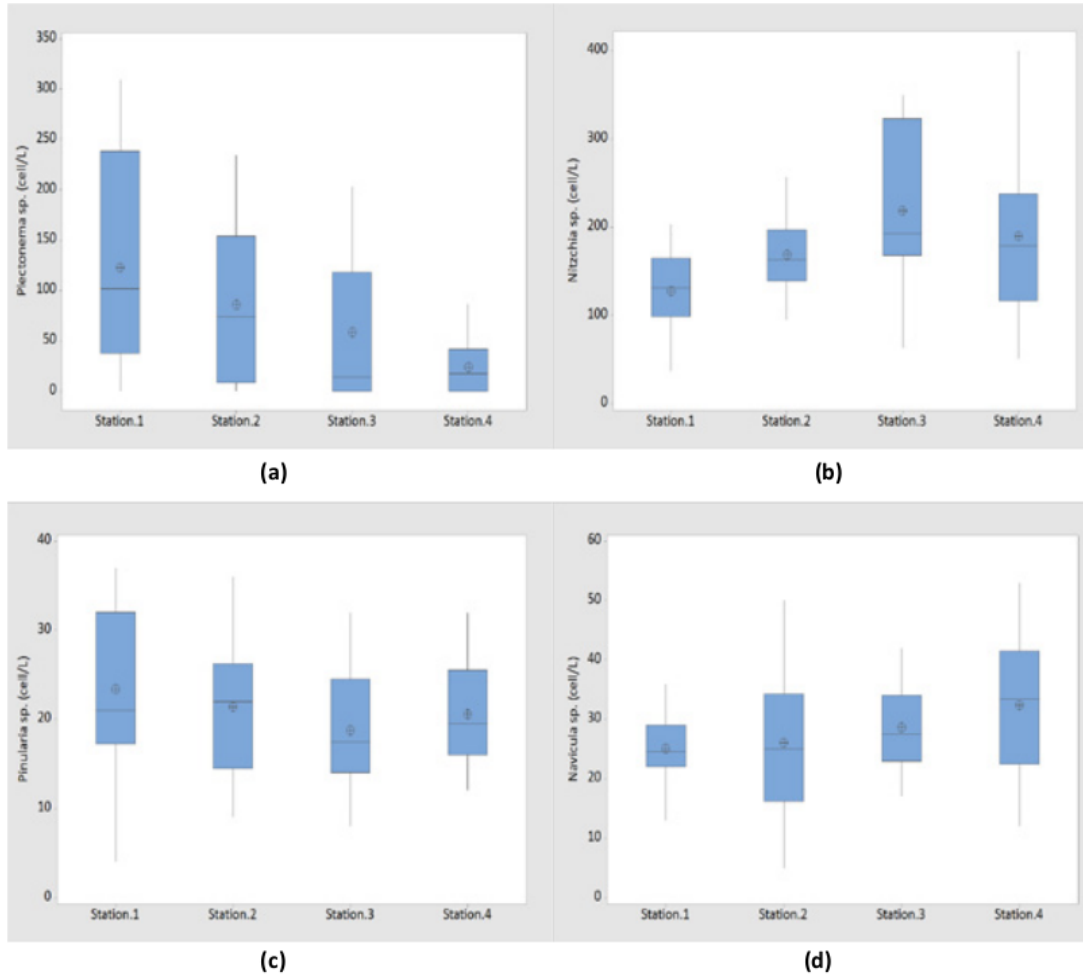


Fig. 8: The average of phytoplankton abundance in the river segment at various station

like or Region 3 comprised a dominant percentage of the fluorescence in wastewater treatment plant effluent (Chen *et al.*, 2003) and was closely related to the phytoplankton activities (Liu *et al.*, 2021; Hua *et al.*, 2020). Second, the average percentage FRI of the organic matter indicated different quantities and quality at each station. The non-humic substances-like fluorescence as presented by AP-like, SMPs-like, with statistical analysis, had a higher percentage FRI at stations 3 and 4 than the others. It was likely that Station 3 and 4 had a higher percentage of extracellular biological organic matter fraction than

the other river segments. The fraction was supposed to contain soluble microbial products of amino acids and carbohydrates. Tryptophan and tyrosine which are aromatic amino acids, were confirmed as biological activity products in natural systems and exhibited a distribution of fluorescence response similar to AP-like and SMPs-like of this study (Coble 2007; Determann *et al.*, 1998). The humic substances-like fluorescence as presented by FA-like and HA-like had a higher percentage FRI at stations 1 and 2 than others and were tested by ANOVA One-Way. Combining the bulk parameters of TOC, UV₂₅₄, SUVA

74
value, and fluorescence spectroscopy convinced the characteristic of organic matter in the river. Station 1 and 2 had high UV₂₅₄ concentration, SUVA value, high percentage FRI of FA-like and HA-like substances. It was conjectured that stations 1 and 2 were mainly composed of aromatic, hydrophobic, humic substances organic matter, which may be generated from terrestrial systems.

Station 3 and 4 had lower UV concentration and SUVA values, with a high percentage FRI of AP-like and SMPs-like than the others. There was a lower SUVA value among all stations indicates in the mixtures of aquatic humics, hydrophobic and hydrophilic, as well as molecular weights of organic matter. This showed that Station 3 and 4 comprised more autochthonous and sources of organic matter from anthropogenic activities. The river ecosystem, which source is terrestrial, autochthonous, and anthropogenic, provided hotspots for storing, transporting, and transforming organic matter. The sources proportions were primarily and terrestrially derived with increased autochthonous inputs from macrophytes. In addition, the sources of dissolved organic matter are a mixture of terrestrial, autochthonous, or primarily from wastewater effluent (Kelso and Baker, 2020).

6
Contribution of phytoplankton abundance to fluorescence dissolved organic matter in the river segment.

This study discovered four main phytoplankton species with various abundance in the river segments, namely Plectonema sp., Nitzschia sp., Navicula sp., and Pinularia sp. The distribution data of the phytoplankton abundance in this segment was tested by Kolmogorov–Smirnov. The results showed a usual distribution data for Plectonema sp., Nitzschia sp., Navicular sp., and Pinularia sp. as abundance $P > 0.000$, 0.007 , 0.000 , and 0.013 , respectively. Furthermore, ANOVA testing was carried out to determine the differences in the mean phytoplankton abundance of the river segments. The statistical analysis ANOVA One-Way with the Tukey 95% confidence interval determined whether there were statistically significant or non-significance differences in the abundance of the species among all stations. According to the results, there were statistically significant differences in the mean abundance of phytoplankton at all stations with p-value = 0.006 and 0.01 in Plectonema sp. and

Nitzschia sp. abundance, respectively. Meanwhile, the analysis generated p-value = 0.156 and 0.412 for Navicula sp. and Pinularia sp. abundance, respectively, therefore, classified as only one group of phytoplankton abundance. This showed that there were non-significantly differences in both species abundance among all stations. The Tukey analysis classified Plectonema sp. and Nitzschia sp. abundance at each station into two main groups. Station 1 and 2 were grouped in the high Plectonema sp. and low Nitzschia sp. abundance, while Station 3 and 4 were classified in the low Plectonema sp. and high Nitzschia sp. abundance. Furthermore, the statistical box plot analysis presented the pattern of the phytoplankton abundance in the river segments.

Fig. 8a to 8d present box plots of their average abundance. Firstly, a comparison among the species at all stations conjectured that Nitzschia sp. had a higher abundance, and Pinularia sp. was lower than the others. Meanwhile, Plectonema sp. had the highest at Station 1 and the lowest at 4. Nitzschia sp. had a higher abundance at Station 3 and lower at 1. Moreover, Navicula sp. had the highest abundance at Station 4 and the lowest at Station 1. Pinnularia sp. gave the highest at Station 1, with the lowest at Station 3. This phytoplankton abundance was strongly influenced by migration, which can occur due to population density and physical environmental conditions, such as changes in temperature and currents (Basu and Mackey, 2018). Secondly, Station 1 was likely to contain a similar abundance in Plectonema sp. and Nitzschia sp., and the same for Navicula sp. and Pinularia sp. Stations 2 and 3 showed that the abundance of Nitzschia sp. was primarily dominant than others. However, Navicular sp. was similar to Pinularia sp. Station 4 identified a similar abundance of Plectonema sp., Navicular sp., and Pinularia sp. There is competition in several phytoplankton species that use the same resource lacking in availability, or even regardless of sufficient availability, and competition still occurs when they take advantage of the resource, with one attacking the other or vice versa (Burson et al., 2018).

The relationship among the bulk parameters, organic fluorescence parameters, and phytoplankton abundance

The degree correlation between the bulk parameters, fluorescence organic matter, and

Table 2: The degree correlation among the bulk parameters, fluorescence organic matter, and phytoplankton abundance*

Parameters	TOC	UV ₂₅₄	SUVA	AP-like	FA-like	SMPs-like	HA-like	Navicula sp.	Plectonem a sp.	Pinnularia sp.
UV ₂₅₄	0.085 0.502									
SUVA	-0.044 0.729	0.887 0.000								
AP-like	-0.287 0.022	-0.440 0.000	-0.373 0.002							
FA-like	0.254 0.042	0.105 0.411	0.047 0.710	-0.249 0.048						
SMPs-like	-0.038 0.764	-0.198 0.116	-0.228 0.070	0.638 0.000	-0.085 0.505					
HA-like	-0.035 0.786	0.344 0.005	0.344 0.005	-0.674 0.000	-0.022 0.862	-0.348 0.005				
Navicula sp.	-0.109 0.392	-0.331 0.007	-0.289 0.021	0.193 0.126	-0.102 0.422	0.090 0.480	-0.082 0.521			
Plectonema sp.	0.271 0.030	0.137 0.281	0.131 0.303	-0.346 0.005	0.293 0.019	-0.057 0.652	0.110 0.386	0.166 0.189		
Pinnularia sp.	-0.097 0.448	-0.239 0.058	-0.292 0.470	-0.245 0.051	0.142 0.263	-0.268 0.032	0.220 0.080	0.137 0.279	0.320 0.010	
Nitzschia sp.	-0.243 0.053	-0.283 0.023	-0.203 0.108	0.160 0.205	-0.203 0.107	0.176 0.164	0.070 0.585	0.168 0.184	0.035 0.785	0.174 0.170

*Cell Contents description; Pearson correlation (the first row of the number of correlation between parameters); P-value (the second row of the number of correlation between parameters)

phytoplankton abundance was examined, as shown in Table 2. Correlation analysis was carried out using TOC and UV₂₅₄ concentrations, SUVA value with percentage FRI of AP-like, FA-like, SMPs-like, or HA-like, as well as the abundance of Plectonema sp., Nitzschia sp., Navicula sp., and Pinnularia sp. Firstly, based on the correlations of the bulk parameters, TOC concentration was positively higher with Region 1 (AP-like) and Region 2 (FA-like). In addition, UV₂₅₄ concentration and SUVA value were significantly correlated with Region 1 (AP-like) and Region 4 (HA-like). The results showed fluorescence spectroscopy, which fractionated AP-like, FA-like, SMPs-like, and HA-like could be used to identify the quantity and quality of organic matter in the source water.

This result was expected since TOC measured all organic carbon, including humic and non-humic substances, as presented by AP-like and FA-like. Secondly, a strong positive correlation between UV₂₅₄ concentration and SUVA value indicated that higher aromatic conjugated double bond corresponded to higher molecular weight organic, more hydrophobic, and content of humic substances. These results are consistent with the Pearson correlation between

bulk parameters of UV₂₅₄ correlation, SUVA, and fluorescence organic matters of AP-like and HA-like. Furthermore, it was conjectured that fluorescence spectroscopy could be used to assess the properties of organic matter existing in the source water. Thirdly, the results showed that TOC had a stronger correlation with AP-like than HA-like. This was probably because the humic structure may incorporate protein-like-fluorophores due to weak interactions based on x-x or van der Waals forces between the dissolved organic matter components. Previous studies indicated that proteins and humic supramolecules containing specific structures attained from phenol or aniline might contribute to the fluorescence. Fourth, this study discovered a strong correlation between DOM and phytoplankton abundance. Plectonema sp. correlated with TOC, AP-like, and FA-like, while Navicula sp. and Nitzschia sp. correlated with UV₂₅₄ and Pinnularia sp. with SMPs-like. The existence of phytoplankton was likely to enhance the quantity and characteristics of DOM in the aquatic environment. The production of marine-like fluorophores accompanied phytoplankton degradation as a significant source of autochthonous DOM (Wada et al., 2007). In addition,

higher molecular weight compounds such as protein (tryptophan)-like fluorescence were presented in exudates when phytoplankton grows (Chari *et al.*, 2013). The combination of the bulk parameters (TOC, UV_{254} , and SUVA value), fluorescence spectroscopy, and phytoplankton abundance convinced the quality of organic matter in the surface water. However, it could be eventually used to monitor the water's quality.

CONCLUSION

This study showed that the quality and quantity of DOM at all stations were significantly different, as classified into two groups with higher bulk parameters at stations 1 and 2 and a lower concentration at 3 and 4. The average TOC concentration for stations 1 and 2 was about a value 10.1-11.7 mg/L, while 3 and 4 were in between 9.8-10.9 mg/L. The average UV_{254} concentration for stations 1 and 2 was in the range of 10.1-11.7 mg/L, while 3 and 4 were between 9.8-10.9 mg/L. The average UV_{254} concentration for stations 1 and 2 was 0.65-0.8/cm, while 3 and 4 were 0.39-0.65/cm. The average SUVA concentration of stations 1 and 2 was in the range 5.3-6.4 L/mg/m, while 3 and 4 were 4.0-5.3 L/mg/m. In addition, fluorescence spectroscopy with FRI analysis showed stations 1 and 2 were grouped in the high percentage FRI of humic substance-like (FA-like and HA-like) about 74.35%. It was conjectured that stations 1 and 2 were mainly composed of aromatic, hydrophobic, humic substances organic matter, which may be generated from terrestrial systems, while stations 3 and 4 were classified in high percentages non-humic substances-like (AP-like and SMPs-like) about 29.05%. This showed that Station 3 and 4 comprised more autochthonous and sources of organic matter from anthropogenic activities. According to phytoplankton abundance, Station 1 had a high abundance of Plectonema sp. (238.5 cell/L) and Pinularia sp. (32 cell/L), while stations 2 and 3 mainly consisted of Nitzschia sp. (197.5 cell/L and 322.75 cell/L), and Navicula sp. (41.5 cell/L) was dominant at Station 4. The Pearson correlation showed a strong relationship between DOM and phytoplankton abundance. Therefore, Plectonema sp. was in correlation with TOC (0.271), AP-like (-0.346), and FA-like (0.293), while Navicula sp. and Nitzschia sp. correlated with UV_{254} (-0.331 and -0.283), and Pinularia sp. correlated with SMPs-like (-0.268). This study conjectured that the bulk

30
parameters of DOM, fluorescence spectroscopy, and phytoplankton abundance could be used to assess the characteristic of DOM, while the combination of these methods could be used to monitor the surface water quality. Future work should be conducted on the laboratory scale for phytoplankton observation in order to identify the characteristic of organic matter that a kind of phytoplankton species has released. Therefore, it could be used to predict the amount of DOM derived by phytoplankton, DOM derived in the aquatic, and DOM from the terrestrial watershed.

AUTHOR CONTRIBUTIONS

O.H. Cahyonugroho performed the experimental design, analyzed the data, and prepared the manuscript text as well as the literature review. S. Hariyanto and G. Supriyanto interpreted the data and helped in manuscript preparation.

ACKNOWLEDGEMENT

This study was supported by the Directorate of Research and Community Service, Deputy for Strengthening Research and Development of the Ministry of Research and Technology/National Research and Innovation Agency through Postgraduate Research – Doctoral Dissertation Research Scheme for multi-year, with Contract No. [489/UN3.15/PT/2021].

CONFLICT OF INTEREST

8
The authors declare no potential conflict of interest regarding the publication of this work. Also, ethical issues, including plagiarism, informed consent, misconduct, data fabrication and/or falsification, double publication and submission, as well as redundancy, have been entirely witnessed by the authors.

OPEN ACCESS

2
This article is licensed under a Creative Commons Attribution 4.0 International License, which permits use, sharing, adaptation, distribution and reproduction in any medium or format, as long as you give appropriate credit to the original author(s) and the source, provide a link to the Creative Commons license, and indicate if changes were made. The images or other third party material in this article are included in the article's Creative Commons license, unless indicated otherwise in a credit line to the

material. If material is not included in the article's Creative Commons license and your intended use is not permitted by statutory regulation or exceeds the permitted use, you will need to obtain permission directly from the copyright holder. To view a copy of this license, visit: <http://creativecommons.org/licenses/by/4.0/>

ABBREVIATIONS

%	Percent
/cm	Per centimeter
ANOVA	Analysis of variance
AP-like	Aromatic proteins-like
C=C	Carbon chain double bonds
cell/L	The number of phytoplankton cell per liter
DOC	Dissolved organic carbon
DOM	Dissolved organic matter
Em	Emission wavelength
Ex	Excitation wavelength
FA-like	Fulvic acid-like
FEEM	Fluorescence spectroscopy using excitation-emission matrices
FRI	Fluorescence regional integration
HA-like	Humic acid-like
L/mg/m	Liter per miligrams per meter
mg/L	Miligrams per liter
mm	Milimeter
µm	Micrometer
<i>Navicula sp.</i>	<i>Navicula</i> species
<i>Nitzchia sp.</i>	<i>Nitzchia</i> species
NOM	Natural organic matter
nm	Nanometer
OCD	Organic carbon detector
P >	Probability value more than
P =	Probability value equal
<i>Pinnularia sp.</i>	<i>Pinnularia</i> species
<i>Plectonema sp.</i>	<i>Plectonema</i> species
P-value	Probability value
SMPs-like	Soluble microbial by products-like
SUVA	Specific ultraviolet absorbance

TOC	Total organic carbon
UV ₂₅₄	Ultraviolet at 254 nm wavelength
UVD	Ultraviolet detector
UV/vis	Ultraviolet visible

REFERENCES

- Altman, J.C.; Paerl, H.W., (2012). Composition of inorganic and organic nutrient sources influences phytoplankton community structure in the New River Estuary, North Carolina. *Aquat. Ecol.*, 46(3): 269-282 (14 pages).
- APHA, (2012). *Standard Methods for the Examination of Water and Wastewaters*, 21th ed. American Public Health Association: Washington, DC.
- Basu, S.; Mackey, K.R.M., (2018). Phytoplankton as key mediators of the biological carbon pump: their responses to a changing climate. *J. Sustainability*, 10(3): 1-18 (18 pages).
- Bhattacharya, R.; Osburn, C.L., (2017). Multivariate analyses of phytoplankton pigment fluorescence from a freshwater river network. *Environ. Sci. Technol.*, 51(12): 6683-6690 (8 pages).
- Biddanda, B.; Benner, R., (1997). Carbon, nitrogen, and carbohydrate fluxes during the production of particulate and dissolved organic matter by marine phytoplankton. *Limnol. Ocean.*, 42: 506-518 (13 pages).
- Biggs, B.J.F., (2000). Eutrophication of streams and rivers: dissolved nutrient chlorophyll relationships for benthic algae. *J. North Am. Benthol. Soc.*, 19(1): 17-31 (15 pages).
- Burpee, B.; Saros, J.E.; Northington, R.M.; Simon, K.S., (2016). Microbial nutrient limitation in Arctic lakes in a permafrost landscape of southwest Greenland. *Biogeosci.*, 13(2): 365-374 (10 pages).
- Burson A.; Stomp M.; Greenwell E.; Grosse J.; Huisman J. (2018). Competition for nutrients and light: testing advances in resource competition with a natural phytoplankton community. *J. Ecol.* 99(5): 1108 – 1118 (11 pages).
- Cao, X.; Wang, J.; Liao, J.; Sun, J.; Huang, Y., (2016). The threshold responses of phytoplankton community to nutrient gradient in a shallow eutrophic Chinese lake. *Ecol. Indic.*, 61: 258-267 (10 pages).
- Chari, N.V.H.K.; Keerthi, S.; Sarma, N.S.; Pandi, S.R.; Chiranjeevulu, G.; Kiran, R.; Koduru, U., (2013). Fluorescence and absorption characteristics of dissolved organic matter excreted by phytoplankton species of western Bay of Bengal under axenic under laboratory condition. *J. Exp. Mar. Biol. Ecol.*, 445: 148-155 (8 pages).
- Chen, W.; Westerhoff, P.; Leenheer, J.A.; Booksh, K., (2003). Fluorescence excitation-emission matrix regional integration to quantify spectra for dissolved organic matter. *J. Environ. Sci. Technol.*, 37: 5701-5710 (10 pages).
- Coble, P.G., (2007). Marine chemical biogeochemistry: the chemistry of ocean color. *Chem. Rev.*, 107: 402-418 (17 pages).
- Conley, D.J.; Paerl, H.W.; Howarth, R.W.; Boesch, D.F.; Seitzinger, S.P.; Havens, K.E.; Lancelot, C.; Likens, G.E., (2009). Controlling eutrophication: nitrogen and phosphorus. *J. Sci.*, 323(5917): 1014-1015 (2 pages).
- Cuvin-Aralar, M.L.; Focken, U.; Becker, K.; Aralar, E.V., (2004). Effects of low nitrogen phosphorus ratios in the phytoplankton community in Laguna de Bay, a shallow eutrophic lake in the Philippines.

- Aquat. Ecol. 38(3): 387-401 **(15 pages)**.
- Determann, S.; Lobbes, J.M.; Reuter, R.; Rullkötter, J., (1998). Ultraviolet fluorescence excitation and emission spectroscopy of marine algae and bacteria. *Mar. Chem.*, 62(1-2): 137-156 **(19 pages)**.
- Dumago, S.W.L.; Puno, G.R.; Ingotan, S.S., (2018). Water quality assessment in various land use and land cover of Muleta Watershed Bukidnon, Philippines. *J. Bio. Environ. Sci.*, 112(3): 201-209 **(8 pages)**.
- Edzwald, J.K.; Becker, W.C.; Wattier, K.L., (1985). Surrogate parameters for monitoring organic matter and THM precursors. *J. Am. Water Works Assn.*, 77(4): 122-131 **(10 pages)**.
- Edzwald, J.K.; Tobiasson, J.E., (2011). Chemical principles, source water composition, and watershed protection. In *Water Quality & Treatment: A handbook on drinking water*; Edzwald, J.K., Eds. New York: AWWA McGraw-Hill.
- Fukuzaki, K.; Imai, I.; Fukushima, K.; Ishii, K.I.; Sawayama, S.; Yoshioka, T., (2014). Fluorescent characteristics of dissolved organic matter produced by bloom-forming coastal phytoplankton. *J. Plankton. Res.*, 36: 685-694 **(10 pages)**.
- Haraguchi, R.; Asmala, E.; Jakobsen, H.H.; Carstensen, J., (2019). Composition of natural phytoplankton community has minor effects on autochthonous dissolved organic matter characteristics. *Mar. Biol. Res.*, 1-19 **(19 pages)**.
- Heisler, J.; Gilbert, P.M.; Burkholder, J.M.; Anderson, D.M.; Cochlan, W.; Dennison, W.C.; Dortch, Q.; Gobler, C.J.; Heil, C.A.; Humphries, E.; Lewitus, A.; Magnien, R.; Marshall, H.G.; Sellner, K.; Stockwell, D.A.; Stoecker, D.K.; Suddleson, M., (2008). Eutrophication and harmful algal blooms: a scientific consensus. *Harmful Algae*. 8(1): 3-13 **(11 pages)**.
- Her, N.; Amy, G.; Foss, D.; Cho, J.; Yoon, Y.; Kosenka, P., (2002). Optimization of method for detecting and characterizing NOM by HPLC-size exclusion chromatography with UV and on-line DOC detection. *Environ. Sci. Technol.*, 36: 1069-1076 **(8 pages)**.
- Her, N.; Amy, G.; McKnight, D.; Sohn, J.; Yoon, Y., (2003). Characterization of DOM as a function of MW by fluorescence EEM and HPLC-SEC using UVA, DOC, and fluorescence detection. *Water Res.*, 37: 4295-4303 **(9 pages)**.
- Hidayah, E.N.; Chen, Y.C.; Yeh, H.H., (2017). Comparison between HPSEC-OCD and F-EEMs for assessing DBPs formation in water. *J. Environ. Sci. Health. Part A*, 52(4): 391-402 **(12 pages)**.
- Hidayah, E.N.; Pachwarya, R.B.; Cahyonugroho, O.H.; Ramanathan, A.L., (2020). Characterization of molecular weight-based fluorescent organic matter and its removal in combination of constructed wetland with activated sludge process. *Water Air Soil Pollut.*, 231(41): 1-12 **(12 pages)**.
- Ho, H.H.; Cao, J.W.; Kao, C.M.; Lai, W.L., (2019). Characterization of released metabolic organics during AOC analyses by P17 and NOX strains using 3-D fluorescent signals. *Chemosphere*. 222: 205-213 **(9 pages)**.
- Hood, E.; Gooseff, M.N.; Johnson, S.L., (2006). Changes in the character of streamwater dissolved organic carbon during flushing in three small watersheds, Oregon. *J. Geophys. Res.*, 111 (G01007): 1-8 **(8 pages)**.
- Hounshell, A.G.; Peierls, B.L.; Osburn, C.L.; Paerl, H.W., (2017). Stimulation of phytoplankton production by anthropogenic dissolved organic nitrogen in a coastal plain estuary. *Environ. Sci. Technol.*, 51(22): 13104-13112 **(9 pages)**.
- Hua, L.C.; Chao, S.J.; Huang, K.; Huang, C.P., (2020). Characteristics of low and high SUVA precursors: Relationships among molecular weight, fluorescence, and chemical composition with DBP formation. *Sci. Total Environ.*, 727: 1-10 **(10 pages)**.
- Hudson, N.; Baker, A.; Reynolds, D., (2007). Fluorescence analysis of dissolved organic matter in natural, waste and polluted waters- a review. *River Res. Appl.*, 23: 631-649 **(19 pages)**.
- Jaffe, R.; McKnight, D.; Maie, N.; Cory, R.; McDowell, W.H.; Campbell, J.L., (2008). Spatial and temporal variations in DOM composition in ecosystems: The importance of long-term monitoring of optical properties. *J. Geo. Res.*, 113(G04032): 1-15 **(15 pages)**.
- Jiao, R.; Chow, C.W.K.; Xu, H.; Yang, X.; Wang, D., (2014). Organic removal assessment at full-scale treatment facilities using advanced organic characterization tools. *Environ. Sci. Processes Impacts*, 16: 2451-2459 **(9 pages)**.
- Kelso, J.E.; Baker, M.A., (2020). Organic matter is a mixture of terrestrial, autochthonous, and Wastewater effluent in an urban river. *Front. in Environ. Sci.*, 7(202): 1-16 **(16 pages)**.
- Kissman, C.E.H.; Williamson, C.E.; Rose, K.C.; Saros, J.E., (2017). Nutrients associated with terrestrial dissolved organic matter drive changes in zooplankton: phytoplankton biomass ratios in an alpine lake. *Freshwater Biol.*, 62(1): 40-51 **(12 pages)**.
- Lai, C.H.; Chou, Y.C.; Yeh, H.H., (2015). Assessing the interaction effects of coagulation pretreatment and membrane material on UF fouling control using HPSEC combined with peak-fitting. *J. Member. Sci.*, 474: 207-214 **(8 pages)**.
- Liu, Q.; Jiang, Y.; Tian, Y.; Hou, Z.; He, K.; Fu, L.; Xu, H., (2019). Impact of land use on the DOM composition in different seasons in a subtropical river flowing through a region undergoing rapid urbanization. *J. Clean. Prod.*, 212: 1224-1231 **(8 pages)**.
- Liu, Q.; Tian, Y.; Liu, Y.; Yu, M.; Hou, Z.; He, K.; Xu, H.; Jiang, Y., (2021). Relationship between dissolved organic matter and phytoplankton community dynamics in a human-impacted subtropical river. *J. Clean. Prod.*, 289: 1-10 **(10 pages)**.
- Mangal, V.; Stock, N.L.; Gueguen, C., (2016). Molecular characterization of phytoplankton dissolved organic matter (DOM) and sulfur components using high resolution orbitrap mass spectrometry. *Anal. Bioanal. Chem.*, 408(7): 1891-1900 **(10 pages)**.
- Maie, N.; Boyer, J. N.; Yang, C.; Jaffe, R., (2006). Spatial, geomorphological and seasonal variability of CDOM in estuaries of the Florida Coastal Everglades. *Hydrobiol.*, 569: 135-150 **(16 pages)**.
- Matilainen, A.; Gjessing, E.T.; Lahtinen, T.; Hed, L.; Bhatnagar, A.; Sillanpää, M., (2011). An overview of the methods used in the characterization of natural organic matter (NOM) in relation to drinking water treatment. *Chemosphere*. 83(11): 1431-1442 **(12 pages)**.
- Moradi, S.; Sawade, E.; Aryal, R.; Chow, C.W.K.; van Leeuwen, J.; Drikas, M.; Cook, D.; Amal, R., (2018). Tracking changes in organic matter during nitrification using fluorescence excitation-emission matrix spectroscopy coupled with parallel factor analysis (feem/parafac). *J. Environ. Chem. Eng.*, 6(1): 1522-1528 **(7 pages)**.
- Murphy, K.R.; Stedmon, C.A.; Graeber, D.; Bro, R., (2013). Fluorescence spectroscopy and multi-way techniques. *PARAFAC. Anal. Methods*, 5(23): 6557-6566 **(10 pages)**.
- Myklestad, S.M., (1995). Release of extracellular products by phytoplankton with special emphasis on polysaccharides. *Sci. Total Environ.*, 165: 155-164 **(10 pages)**.
- Nguyen, K.A.; Zhang, H.; Stewart, R.A., (2013). An intelligent pattern recognition model to automate the categorisation of resi-

- dential water end-use events, *J. Environ. Soft.*, 47: 108-127 (19 pages).
- Paerl, H.W.; Huisman, J., (2008). Blooms like it hot. *Science*. 320(5872): 57-58 (2 pages).
- Ramanan, R.; Kim, B.H.; Cho, D.H.; Oh, H.M.; Kim, H.S., (2016). Algae-bacteria interactions: evolution, ecology and emerging applications. *Biotech. Adv.* 34: 14-29 (16 pages).
- Romera-Castillo, C.; Sarmiento, H.; Álvarez-Salgado, X.A.; Gasol, J.M.; Marrasé, C., (2011). Net production and consumption of fluorescent colored dissolved organic matter by natural bacterial assemblages growing on marine phytoplankton exudates. *Appl. Environ. Microbiol.*, 77: 7490-7498 (9 pages).
- Shon, H.K.; Vignneswaran, S.; Snyder, S.A., (2012). Effluent organic matter (EfOM) in wastewater: constituents, effect, and treatment. *Crit. Rev. Environ. Sci. Technol.*, 36(4): 327-374 (48 pages).
- Suksomjit, M.; Nagao, S.; Ichimi, K.; Yamada, T.; Tada, K., (2009). Variation of dissolved organic matter and fluorescence characteristics before, during and after phytoplankton bloom. *J. Oceanogr.* 65(6): 835-846 (12 pages).
- Thornton, D.C.O., (2014). Dissolved organic matter (DOM) released by phytoplankton in the contemporary and future ocean. *European. J. Phys.*, 49: 20-46 (27 pages).
- Wada, S.; Aoki, M.N.; Tsuchiya, Y.; Sato, T.; Shinagawa, H.; Hama, T., (2007). Quantitative and qualitative analyses of dissolved organic matter released from *Ecklonia cava* Kjellman, in Oura Bay, Shimoda, Izu Peninsula, Japan. *J. Exp. Mar. Biol. Ecol.*, 349:344-358 (14 pages).
- Watson, K.; Farre, M.J.; Leusch, F.D.L.; Knight, N., (2018). Using fluorescence-parallel factor analysis for assessing disinfection by-product formation and natural organic matter removal efficiency in secondary treated synthetic drinking waters. *Sci. Total Environ.*, 640-641: 31-40 (10 pages).
- Weishaar, J.L.; Aiken, G.R.; Bergamaschi, B.A.; Fram, M.S.; Fujii, R.; Mopper, K., (2003). Evaluation of specific ultraviolet absorbance as an indicator of the chemical composition and reactivity of dissolved organic carbon. *Environ. Sci. Technol.*, 37(20): 4702-4708 (7 pages).
- Yamashita, Y.; Jaffé, R.; Maie, N.; Tanoue, E., (2008). Assessing the dynamics of dissolved organic matter (DOM) in coastal environments by excitation-emission matrix fluorescence and parallel factor analysis (EEM-PARAFAC). *Limnol. Ocean.*, 53: 1900-1908 (9 pages).
- Yao, Y.; Li, Y. Z.; Zhang, Y. P.; Guo, X. J.; Yuan, F., (2016). Changes and characteristics of dissolved organic matter in a constructed wetland system using fluorescence spectroscopy. *Environ. Sci. Pollut. Res.*, 23: 12237-12245 (9 pages).
- Zhang, F.; Hari, M.; Moritz, F.; Zhang, J.; Witting, M.; Wu, Y.; Schmitt-Kopplin, P.; Fekete, A.; Gaspar, A.; Hertkorn, N., (2014). Molecular and structural characterization of dissolved organic matter during and post cyanobacterial bloom in Taihu by combination of NMR spectroscopy and FTICR mass spectrometry. *Water Res.*, 57: 280-294 (15 pages).

AUTHOR (S) BIOSKETCHES

Cahyonugroho, O.H., Ph.D. Candidate, Associate Professor, ¹Mathematics and Natural Sciences Doctoral Program, Universitas Airlangga, Kampus C Mulyorejo, Surabaya, Indonesia and ²Department of Environmental Engineering, Universitas Pembangunan Nasional Veteran Jawa Timur, Raya Rungkut Madya, Surabaya, Indonesia.
Email: okhecah@gmail.com
ORCID: [0000-0001-9721-5515](https://orcid.org/0000-0001-9721-5515)

Hariyanto, S., Ph.D., Associate Professor, Department of Biology, Universitas Airlangga, Kampus C Mulyorejo, Surabaya, Indonesia.
Email: sucipto-h@fst.unair.ac.id
ORCID: [0000-0002-0712-9259](https://orcid.org/0000-0002-0712-9259)

Supriyanto, G., Ph.D., Assistant Professor, Department of Chemistry, Universitas Airlangga, Kampus C Mulyorejo, Surabaya, Indonesia.
Email: ganden-s@fst.unair.ac.id
ORCID: [0000-0002-8881-4871](https://orcid.org/0000-0002-8881-4871)

HOW TO CITE THIS ARTICLE

Cahyonugroho, O.H.; Hariyanto, S.; Supriyanto, G., (2022). Dissolved organic matter and its correlation with phytoplankton abundance for monitoring surface water quality. *Global J. Environ. Sci. Manage.*, 8(1): 1-16.

DOI: [10.22034/gjesm.2022.01.0](https://doi.org/10.22034/gjesm.2022.01.0)*

url: <http://gjesm.net/>***



Dissolved organic matter and its correlation with phytoplankton abundance for monitoring surface water quality

ORIGINALITY REPORT

20%

SIMILARITY INDEX

12%

INTERNET SOURCES

17%

PUBLICATIONS

0%

STUDENT PAPERS

PRIMARY SOURCES

1 journals.ut.ac.ir 1%
Internet Source

2 academicworks.cuny.edu 1%
Internet Source

3 Euis Nurul Hidayah, Okik Hendriyanto Cahyonugroho, Elita Nurfitriyani Sulisty, Nieke Karnaningroem. "Using molecular weight-based fluorescent detector to characterize dissolved effluent organic matter in oxidation ditch with algae", Environmental Science and Pollution Research, 2022 1%
Publication

4 Euis Nurul Hidayah, Yung-Chen Chou, Hsuan-Hsien Yeh. "Characterization and removal of natural organic matter from slow sand filter effluent followed by alum coagulation", Applied Water Science, 2018 1%
Publication

5	<p>Euis Nurul Hidayah, Okik Hendriyanto Cahyonugroho, Ram Babu Pachwarya, A. L. Ramanathan. " Efficiency of a pilot hybrid wastewater treatment system comprising activated sludge and constructed wetlands planted with and ", Water and Environment Journal, 2020</p> <p>Publication</p>	1 %
6	<p>tel.archives-ouvertes.fr</p> <p>Internet Source</p>	1 %
7	<p>repository.tudelft.nl</p> <p>Internet Source</p>	1 %
8	<p>journal.unhas.ac.id</p> <p>Internet Source</p>	1 %
9	<p>www.scielo.br</p> <p>Internet Source</p>	1 %
10	<p>Wen Chen, Paul Westerhoff, Jerry A. Leenheer, Karl Booksh. "Fluorescence Excitation–Emission Matrix Regional Integration to Quantify Spectra for Dissolved Organic Matter", Environmental Science & Technology, 2003</p> <p>Publication</p>	1 %
11	<p>innspub.net</p> <p>Internet Source</p>	1 %

12	R. Jaffé. "Spatial and temporal variations in DOM composition in ecosystems: The importance of long-term monitoring of optical properties", Journal of Geophysical Research, 12/19/2008 Publication	<1 %
13	nireas-iwrc.org Internet Source	<1 %
14	www.science.org Internet Source	<1 %
15	Ates, N.. "Formation of chlorination by-products in waters with low SUVA-correlations with SUVA and differential UV spectroscopy", Water Research, 200710 Publication	<1 %
16	epdf.pub Internet Source	<1 %
17	jos.unsoed.ac.id Internet Source	<1 %
18	www.jeeng.net Internet Source	<1 %
19	docsdrive.com Internet Source	<1 %
20	Jianchao Zhang, Weibing Xun, Zhen Zhu, Dongchu Li, Qirong Shen, Wei Ran. "Influence of Long-Term Fertilizer Treatments on the	<1 %

Fluorescence Spectroscopic Characterization of DOM Leached by Acid Rain From Red Soil", Soil Science, 2013

Publication

21

digitalcommons.usu.edu

Internet Source

<1 %

22

journal.unipdu.ac.id:8080

Internet Source

<1 %

23

Achmad Arifiyanto, Tini Surtiningsih, Ni'matuzahroh, Fatimah, Dyah Agustina, Nur Hidayatul Alami. "Antimicrobial activity of biosurfactants produced by actinomycetes isolated from rhizosphere of Sidoarjo mud region", Biocatalysis and Agricultural Biotechnology, 2020

Publication

<1 %

24

Lumi Haraguchi, Eero Asmala, Hans H. Jakobsen, Jacob Carstensen. "Composition of natural phytoplankton community has minor effects on autochthonous dissolved organic matter characteristics", Marine Biology Research, 2019

Publication

<1 %

25

Munawarah Munawarah. "Zmijewski dan Springate : Analisis Diskriminan dalam Memprediksi Financial Distress", Akuisisi: Jurnal Akuntansi, 2020

Publication

<1 %

26 Seredynska-Sobecka, B.. "Characterisation of colloidal and particulate organic carbon in freshwaters by thermal fluorescence quenching", Water Research, 200707
Publication <1 %

27 rucore.libraries.rutgers.edu
Internet Source <1 %

28 uwe-repository.worktribe.com
Internet Source <1 %

29 Lap-Cuong Hua, Chun-Hsi Lai, Gen-Shuh Wang, Tsair-Fuh Lin, Chihpin Huang. "Algogenic organic matter derived DBPs: Precursor characterization, formation, and future perspectives – A review", Critical Reviews in Environmental Science and Technology, 2019
Publication <1 %

30 Marut Suksumjit. "Variation of dissolved organic matter and fluorescence characteristics before, during and after phytoplankton bloom", Journal of Oceanography, 12/2009
Publication <1 %

31 link.springer.com
Internet Source <1 %

32 Guang-Hui Yu, Min-Jie Wu, Yi-Hong Luo, Xing-Ming Yang, Wei Ran, Qi-Rong Shen. <1 %

"Fluorescence excitation–emission spectroscopy with regional integration analysis for assessment of compost maturity", Waste Management, 2011

Publication

33

Tiantian Shao, Xiaowen Liang, Danyuan Zhuang, Ke Zheng, Tao Wang. "Seasonal variations in CDOM characteristics and effects of environmental factors in coastal rivers, Northeast China", Environmental Science and Pollution Research, 2022

Publication

<1 %

34

Kimura, K.. "Irreversible membrane fouling during ultrafiltration of surface water", Water Research, 200408/09

Publication

<1 %

35

Youngkun Chung, Hyojeon Kim, Taek-Seung Kim, Young Mi Kim, Seoktae Kang. "Mitigation of organic fouling on ceramic membranes by selective removal of microbial-oriented organic matters in wastewater effluents", Separation and Purification Technology, 2019

Publication

<1 %

36

civilandresource.engineering.dal.ca

Internet Source

<1 %

37

moam.info

Internet Source

<1 %

38

Leilei Bai, Xin Liu, Ke Hua, Jiancai Deng, Changhui Wang, Helong Jiang, Aijie Wang. "Seasonal variations of fluorescent dissolved organic matter control estrone biodegradation potential in eutrophic waters affected by allochthonous and autochthonous sources", Journal of Hydrology, 2022

Publication

<1 %

39

Nahin Mostofa Niloy, Mashura Shammi, Md. Morshedul Haque, Shafi M. Tareq. "Biogeochemistry of the dissolved organic matter (DOM) in the estuarine rivers of Bangladesh–Sundarbans under different anthropogenic influences", Heliyon, 2022

Publication

<1 %

40

Cao, Xiaofeng, Jie Wang, Jingqiu Liao, Jinhua Sun, and Yi Huang. "The threshold responses of phytoplankton community to nutrient gradient in a shallow eutrophic Chinese lake", Ecological Indicators, 2016.

Publication

<1 %

41

E N Hidayah, O H Cahyonugroho. "Tracking of Dissolved Effluent Organic Matter (dEfOM) in wastewater treatment plant by using fluorescence method", IOP Conference Series: Earth and Environmental Science, 2019

Publication

<1 %

42

Jianbo Lu, Lei Wang, Guifang Si, Bin Lu, Xintong Zhang, Jie Li, Wei Zhang, Zhenhua Wang. "Tertiary treatment of bio-treated landfill leachate by a two-step electrochemical process including electrooxidation and electrocoagulation: a bench-scale trial", Environmental Science and Pollution Research, 2022

Publication

<1 %

43

Xiaogang Xing, Guoqiang Qiu, Emmanuel Boss, Haili Wang. "Temporal and Vertical Variations of Particulate and Dissolved Optical Properties in the South China Sea", Journal of Geophysical Research: Oceans, 2019

Publication

<1 %

44

core.ac.uk

Internet Source

<1 %

45

Leilei Bai, Chicheng Cao, Changhui Wang, Huacheng Xu, Hui Zhang, Vera I. Slaveykova, Helong Jiang. "Toward Quantitative Understanding of the Bioavailability of Dissolved Organic Matter in Freshwater Lake during Cyanobacteria Blooming", Environmental Science & Technology, 2017

Publication

<1 %

46

Li, Penghui, Ling Chen, Wen Zhang, and Qinghui Huang. "Spatiotemporal Distribution, Sources, and Photobleaching Imprint of

<1 %

Dissolved Organic Matter in the Yangtze Estuary and Its Adjacent Sea Using Fluorescence and Parallel Factor Analysis", PLoS ONE, 2015.

Publication

47

Shigeki Wada, Takeo Ham. "Chapter 6 Application of Gas Chromatography to Exuded Organic Matter Derived from Macroalgae", IntechOpen, 2012

Publication

<1 %

48

Xiaofang Yang, Xing Zheng, Linjie Wu, Xin Cao, Yi Li, Junfeng Niu, Fangang Meng. "Interactions between algal (AOM) and natural organic matter (NOM): Impacts on their photodegradation in surface waters", Environmental Pollution, 2018

Publication

<1 %

49

YingXun Du, ShiLin An, Hu He, ShuaiLong Wen, Peng Xing, HongTao Duan. "Production and transformation of organic matter driven by algal blooms in a shallow lake: Role of sediments", Water Research, 2022

Publication

<1 %

50

Yukun Chen, Zhao Jiang, Xiuyuan Zhang, Bo Cao, Fan Yang, Ziyi Wang, Ying Zhang. "Variation in the Humification Degree of Dissolved Organic Matter from Cattle Manure during Composting as Analyzed by

<1 %

Ultraviolet-Visible and Fluorescence Spectroscopy", Journal of Environment Quality, 2017

Publication

-
- | | | |
|----|--|------|
| 51 | conservancy.umn.edu
Internet Source | <1 % |
| 52 | eprints.lib.hokudai.ac.jp
Internet Source | <1 % |
| 53 | mdpi-res.com
Internet Source | <1 % |
| 54 | repository.kopri.re.kr
Internet Source | <1 % |
| 55 | www.egejfas.org
Internet Source | <1 % |
| 56 | www.frontiersin.org
Internet Source | <1 % |
| 57 | "Water and Wastewater Treatment Technologies", Springer Science and Business Media LLC, 2019
Publication | <1 % |
| 58 | Alexey Ignatev, Tuula Tuhkanen. "Step-by-step analysis of drinking water treatment trains using size-exclusion chromatography to fingerprint and track protein-like and humic/fulvic-like fractions of dissolved organic | <1 % |

matter", Environmental Science: Water Research & Technology, 2019

Publication

59

C. Musikavong. "Three dimensional fluorescent spectroscopy analysis for the evaluation of organic matter removal from industrial estate wastewater by stabilization ponds", Water Science & Technology, 06/2007

Publication

<1 %

60

Feilong Dong, Qiufeng Lin, Cong Li, Guilin He, Yang Deng. "Impacts of pre-oxidation on the formation of disinfection byproducts from algal organic matter in subsequent chlor(am)ination: A review", Science of The Total Environment, 2021

Publication

<1 %

61

Jianfeng Tang, Wendong Wang, Lei Yang, Qianlinglin Qiu, Meixia Lin, Changli Cao, Xinhua Li. "Seasonal variation and ecological risk assessment of dissolved organic matter in a peri-urban critical zone observatory watershed", Science of The Total Environment, 2020

Publication

<1 %

62

Jianfeng Yang, Yumin Duan, Rongqin Zhang, Chen Liu, Yuanji Wang, Ming Li, Yuanyuan Ding, Mukesh Kumar Awasthi, Huike Li. "Connecting soil dissolved organic matter to

<1 %

soil bacterial community structure in a long-term grass-mulching apple orchard", *Industrial Crops and Products*, 2020

Publication

63

Lamsal, R.. "Comparison of advanced oxidation processes for the removal of natural organic matter", *Water Research*, 201105

Publication

<1 %

64

Lili Lyu, Zhidan Wen, Pierre-Andre Jacinthe, Yingxin Shang, Ning Zhang, Ge Liu, Chong Fang, Junbin Hou, Kaishan Song. "Absorption characteristics of CDOM in treated and non-treated urban lakes in Changchun, China", *Environmental Research*, 2020

Publication

<1 %

65

Maie, N.. "Application of excitation emission matrix fluorescence monitoring in the assessment of spatial and seasonal drivers of dissolved organic matter composition: Sources and physical disturbance controls", *Applied Geochemistry*, 201204

Publication

<1 %

66

Meritxell Valenti-Quiroga, Pepus Daunis-i-Estadella, Pere Emiliano, Fernando Valero, Maria J. Martin. "NOM fractionation by HPSEC-DAD-OCD for predicting trihalomethane disinfection by-product

<1 %

formation potential in full-scale drinking water treatment plants", *Water Research*, 2022

Publication

67

Nana O.-A. Osafo, Jiří Jan, Petr Porcal, Jakub Borovec. "Contrasting catchment soil pH and Fe concentrations influence DOM distribution and nutrient dynamics in freshwater systems", *Science of The Total Environment*, 2023

Publication

68

V. Hazuková, B. T. Burpee, I. McFarlane-Wilson, J. E. Saros. "Under Ice and Early Summer Phytoplankton Dynamics in Two Arctic Lakes with Differing DOC", *Journal of Geophysical Research: Biogeosciences*, 2021

Publication

69

Weiwei Huang, Xiao Qin, Bingzhi Dong, Wenzong Zhou, Weiguang Lv. "Investigation of the mechanisms of membrane fouling by intracellular organic matter under different iron treatments during ultrafiltration", *Chemosphere*, 2018

Publication

70

Wen Li, Chenglong Liang, Lu Dong, Xin Zhao, Haiming Wu. "Accumulation and characteristics of fluorescent dissolved organic matter in loess soil-based subsurface

<1 %

<1 %

<1 %

<1 %

wastewater infiltration system with aeration and biochar addition", Environmental Pollution, 2021

Publication

71

ecommons.usask.ca

Internet Source

<1 %

72

neptjournal.com

Internet Source

<1 %

73

www.tandfonline.com

Internet Source

<1 %

74

Jiajun Lei, Liyang Yang, Zhuoyi Zhu. "Testing the effects of coastal culture on particulate organic matter using absorption and fluorescence spectroscopy", Journal of Cleaner Production, 2021

Publication

<1 %

75

Paula G. Coble. "Marine Optical Biogeochemistry: The Chemistry of Ocean Color", Chemical Reviews, 2007

Publication

<1 %

76

Ruchi Bhattacharya, Christopher L. Osburn. "Chromophoric dissolved organic matter composition and load from a coastal river system under variable flow regimes", Science of The Total Environment, 2020

Publication

<1 %

77

Tintin Sukartini, Yulia Indah Permata Sari.
"Women with breast cancer living with one
breast after a mastectomy", Central European
Journal of Nursing and Midwifery, 2021

Publication

<1 %

78

"Photobiogeochemistry of Organic Matter",
Springer Science and Business Media LLC,
2013

Publication

<1 %

Exclude quotes Off

Exclude matches Off

Exclude bibliography On

Dissolved organic matter and its correlation with phytoplankton abundance for monitoring surface water quality

GRADEMARK REPORT

FINAL GRADE

GENERAL COMMENTS

/0

PAGE 1

PAGE 2

PAGE 3

PAGE 4

PAGE 5

PAGE 6

PAGE 7

PAGE 8

PAGE 9

PAGE 10

PAGE 11

PAGE 12

PAGE 13

PAGE 14

PAGE 15

PAGE 16
