

1. Correlation between interleukin-6 expression in post-mortem core liver biopsy

by Umami Maimunah

Submission date: 08-Dec-2023 04:22PM (UTC+0800)

Submission ID: 2252330622

File name: en_interleukin-6_expression_in_post-mortem_core_liver_biopsy.pdf (510.17K)

Word count: 5268

Character count: 28444



Original Article

Correlation between interleukin-6 expression in post-mortem core liver biopsy and degree of liver injury in patients with fatal COVID-19

Umami Maimunah^{1,2*}, Andi RK. Maharani^{1,2}, Gatot Soegiarto^{1,2}, Alphania Rahniayu^{3,4}, Vania A. Gunawan^{1,2}, Priangga A. Wiratama^{3,4}, Stephanie N. Djuanda^{3,4}, Supriadi Supriadi^{1,2}, Isnin A. Marhana^{5,6}, Bambang P. Semedi^{7,8}, Achmad Lefi^{7,8}, Etty H. Kusumastuti^{3,4}, Edi Suyanto^{9,10}, Jilientasia G. Lilihata^{7,8}, Adhitri Anggoro^{5,6}, Lalu GP. Rinjani^{7,8}, Alfian N. Rosyid^{5,6}, Dwi Wahyu^{5,6}, Dyah Fauziah^{5,6}, Anny S. Rahaju^{5,6}, Nila Kurniasari^{5,6}, Grace Ariani^{5,6}, Gilang MS. Nugroho^{5,6}, I KR. Yandi^{5,6} and Ricardo A. Nugraha^{7,8}

¹Department of Internal Medicine, Faculty of Medicine, Universitas Airlangga, Surabaya, Indonesia; ²Department of Internal Medicine, Dr. Soetomo General Academic Hospital, Surabaya, Indonesia; ³Department of Pathology Anatomy, Faculty of Medicine, Universitas Airlangga, Surabaya, Indonesia; ⁴Department of Pathology Anatomy, Dr. Soetomo General Academic Hospital, Surabaya, Indonesia; ⁵Department of Pulmonology and Respiratory Medicine, Faculty of Medicine, Universitas Airlangga, Surabaya, Indonesia; ⁶Department of Pulmonology and Respiratory Medicine, Dr. Soetomo General Academic Hospital, Surabaya, Indonesia; ⁷Department of Anesthesiology and Reanimation, Faculty of Medicine, Universitas Airlangga, Surabaya, Indonesia; ⁸Department of Anesthesiology and Reanimation, Dr. Soetomo General Academic Hospital, Surabaya, Indonesia; ⁹Department of Forensics and Medicolegal Medicine, Faculty of Medicine, Universitas Airlangga, Surabaya, Indonesia; ¹⁰Department of Forensics and Medicolegal Medicine, Dr. Soetomo General Academic Hospital, Surabaya, Indonesia

*Corresponding author: ummima@gmail.com

Abstract

Excessive release of interleukin-6 (IL-6) during the progression of coronavirus disease 2019 (COVID-19) induces cytokine storms, resulting in multi-organ damages including liver injury, similar in nature with mechanism of viral hepatitis. Systemic IL-6 has been associated with the incidence of liver injury among COVID-19 patients; however, studies on IL-6 expression in the liver tissue are completely lacking. The aim of this study was to measure the IL-6 expression in the liver tissues and to determine its correlation with the degree of liver injury in fatal COVID-19 patients. Through this first cross-sectional study, IL-6 expression was measured through immunohistochemical staining and the degree of liver injury was identified based on level of serum alanine aminotransferase (ALT). The Spearman correlation test was used to identify the correlation between IL-6 expression and the degree of liver injury. A total of 47 deceased COVID-19 patients were included and IL-6 expression was observed in all post-mortem liver specimens, ranging from mild to strong expression. Liver injury at various degrees (mild to severe) was found in more than half (59.5%) of the cases. The Spearman correlation analysis suggested a statistically insignificant correlation between liver IL-6 expression and the degree of liver injury ($r=0.152$; $p=0.309$). In conclusion, even IL-6 expression was observed in all post-mortem liver specimens, there was an insignificant correlation between IL-6 expression in the liver tissue with the degree of liver injury among fatal COVID-19 patients, suggesting that IL-6 was not the only main factor contributing to liver damage in COVID-19 patients.

Keywords: Core biopsy, interleukin-6, liver injury, post-mortem, hepatitis



Introduction

36

Multiple organ damages among coronavirus disease 2019 (COVID-19) patients have been widely reported, including liver injury [1-3]. Approximately 46%–62% of patients with critical to fatal COVID-19 suffer from liver injury [4] and 14%–54% of severely ill COVID-19 patients experienced increased levels of serum alanine aminotransferase (ALT) which indicates a process of inflammation or damages in hepatocytes as a result of interaction between Kupffer cells and cytotoxic T-cell in which causing another condition that is similar with viral hepatitis [5-8]. This complication contributes to prolonged hospital stays and results in a three-time higher incidence of mortality among COVID-19 patients compared to those without liver injury [9-12].

Many factors have been thought to contribute to liver damage in COVID-19 patients, including the cytopathic effect of severe acute respiratory syndrome coronavirus 2 (SARS-CoV-2), the causative agent of COVID-19, on hepatocytes and cholangiocytes, drug consumption during therapies, a history of comorbidities, and hyperinflammatory events associated with cytokine storms [13-15]. Uncontrolled inflammation due to the presence of cytokine storms has been associated with the deterioration of COVID-19 conditions in infected individuals [1]. In patients with severe to fatal COVID-19, cytokine storms may lead to various complications, such as alteration of permeability, vascular diseases, hypercoagulopathy, multi-organ damage such as liver injury [13-15] and even contribute to an increased rate of mortality [4,16]. Cytokine storms occur as a result of excessive release of various inflammatory factors [9,17].

Interleukin-6 (IL-6) is a hallmark cytokine of fatal COVID-19 and plays a role in the pathogenesis of COVID-19 [9,17-19]. Approximately 80% of patients with severely to critically ill COVID-19 have been reported to experience cytokine storms related to a rise in IL-6 [14]. IL-6 is not only important in the induction of acute response in the liver but also plays a role in hepatocyte homeostasis [9,20]. However, whether increased IL-6 expression in the liver during cytokine storms contributes to liver injury in COVID-19 patients remains unclear. Therefore, the aim of this study was to identify the correlation between IL-6 expression in the liver tissue with the degree of liver injury in patients with fatal COVID-19 through post-mortem core biopsy.

Methods

Study design and population

A cross-sectional study was conducted among fatal COVID-19 patients hospitalized during the period of July-December 2020 at Dr. Soetomo General Academic Hospital, Surabaya, Indonesia. COVID-19 patients ≥ 18 years of age passing away due to COVID-19 during the period of treatment, and had their core liver biopsy paraffin blocks preserved at Anatomical Pathology Laboratory of Dr. Soetomo General Academic Hospital were included in the study. Written informed consent was obtained from family members of each patient.

Study variables

This study evaluated the expression of IL-6 in the liver tissue as the independent variable and the degree of liver injury based on the level of ALT was the dependent variable. IL-6 expression was defined as the percentage of hepatocytes stained with polyclonal IL-6 antibody (GTX17623). IL-6 expression was evaluated semi-quantitatively using a 4-level point system based on the number of stained hepatocytes (0 = no expression; 1 = positive expression in $< 30\%$; 2 = positive expression in $30\% - 70\%$; and 3 = positive expression in $\geq 70\%$ of cells) [21]. IL-6 expression was determined by two experienced anatomical pathologists at the Anatomical Pathology Unit of Dr. Soetomo General Academic Hospital, Surabaya, Indonesia.

The degree of liver injury in COVID-19 was determined based on the extent of serum ALT exceeding the upper limit of the normal range [22] and was classified into five categories: no liver injury (no increase in ALT level); mild (ALT level of < 2 times the normal limit); moderate (ALT level of ≥ 2 to < 5 times the normal limit), and severe (ALT levels of ≥ 5 times the normal limit). Data on patients' serum ALT were collected during the patients' terminal phase and were approved by a clinical pathologist. The levels of ALT were measured using a Siemens Dimension® EXL™ 200 Integrated Chemistry System machine using the IFCC (PSP) method, with the normal ranges of 0–50 u/L for men and 0–35 u/L for women.

In addition, some covariates were also collected. Data on patients' demographics and clinical profiles were collected during the treatment course. It included age, sex, duration of treatments, hematologic parameters related to inflammation and COVID-19 severity (serum leukocyte, neutrophil, lymphocyte, neutrophil-to-lymphocyte ratio (NLR), ferritin, D-dimer, C-reactive protein (CRP), and procalcitonin), several indicators for liver injury (serum aspartate aminotransferase (AST) and albumin), drugs given for COVID-19 treatments, comorbidities, and causes of death.

Immunohistochemical staining of IL-6 expression

A liver biopsy was done in post-mortem in all cases. The patients' core biopsy of liver tissues then preserved at the Anatomical Pathology Laboratory at Dr. Soetomo General Academic Hospital, Surabaya, Indonesia. About 3–4 μm incision of paraffin tissues were histopathologically proceeded and underwent IL-6 polyclonal antibody staining. Immunohistochemical staining was performed using the labelled streptavidin biotin II procedure, with neutral buffer formalin 10% as a fixative agent. IL-6 expression was measured using IL-6 antibody (GTX17623, Genetex, CA, USA). In brief, the immunohistochemistry (IHC) slide was deparaffinized in three different xylol solutions for five minutes each. The slide was then transferred through 96% and 80%, respectively for two minutes each before being rinsed thoroughly using distilled water for five minutes. A proxy block was added onto the slide and let stand for 15 minutes to block endogenous peroxidation. The sample was then rinsed with distilled water for five minutes. Antigen retrieval was performed by heating the slide at 95°C for 20 minutes in a decloaking chamber supplemented previously with buffer citrate (pH 6). After the buffer cooled down at room temperature for five minutes, the slide was rinsed respectively with distilled water and phosphate buffer citrate (PBS) for five minutes each.

Main staining was performed using IL-6 antibody in a 1:100 ratio (overnight incubation in a magnetic immunostaining at 40°C), followed by trekk universal link, trekkavidin-HRP label, and 3,3'-diaminobenzidine. Counterstaining was carried out by incubating the slide in Meyer's hematoxylin for five minutes at room temperature. After being washed, the slides were dehydrated in alcohol solution with gradual increase in concentrations and immersed in three Xylol solutions and mounted using EZ-mount.

IL-6 expression was determined by observing the color of antibody staining in the tissue sections under a light microscope (Olympus CX22LED) with 100x and 400x magnifications. The results were assessed and confirmed by two anatomical pathologists using a 4-level point system based on the number of stained hepatocytes as explained.

Statistical analysis

The numerical variables, demographic characteristics, and clinical findings were provided as percentage (%), mean \pm standard deviation (SD), and median (min-max). The inter-rater reliability for histochemical staining results was measured using the inter-observer agreement using the Kappa statistical method. The Spearman correlation test was used to identify the association between IL-6 expression in liver tissue and the degree of liver injury in fatal COVID-19 patients. A *p*-value of <0.05 was considered statistically significant. SPSS software for Windows version 25.0 was used to analyze the data (IBM, Armonk, New York, USA).

Results

Patients' characteristics

A total of 47 critically ill COVID-19 were enrolled and analyzed in the study. The patient's demographic and clinical profiles related to COVID-19 and liver function are summarized in **Table 1**. The mean age of the patients was 48.8 years and the majority (76.6%) of the patients were males. The average duration of hospitalization was 10.96 days. Hematological analysis revealed increased levels of leukocyte, neutrophil, lymphocyte, and NLR. Elevated AST (mean 218.8 u/L), ALT (mean 198.4 u/L), and decreased of albumin (mean 2.7 g/dL) levels suggested liver dysfunction. The levels of the inflammatory markers such as ferritin, D-dimer, procalcitonin, and CRP were also elevated (**Table 1**).

Interleukin-6 expression

The mean score of IL-6 expression in patients' liver tissue was 62.49% (min-max: 25%–90%), suggesting moderate expression in general. The expression of IL-6 in the patients' hepatocytes of each grade is presented in **Figure 1**. The distribution of IL-6 expression in liver tissues and the degree of their liver injury are presented in **Table 2**. IL-6 expression was positive in the liver tissue of all patients. More than half (57.4%) of the liver specimens had moderate IL-6 expression (30%–70%), whereas 40.4% exhibited strong expression ($\geq 70\%$).

Table 1. Demographic and clinical characteristics of the patients

Characteristics	Mean \pm SD	Median (min-max)
Age (year)	48.85 \pm 12.72	48.5 (23–79)
Sex, n (%)		
Male	36 (76.6)	
Female	11 (23.4)	
Duration of treatment (day)	10.96 \pm 5.7	11 (3–27)
Leukocytes (cells/mm ³)	23,605.96 \pm 12,952.22	21,950 (5,910–63,400)
Neutrophil (%)	89.18 \pm 8.2	92.4 (58.9–96.1)
Lymphocytes (%)	5.34 \pm 4.85	3.8 (0.5–24.8)
Neutrophil-to-lymphocyte ratio (NLR)	28.45 \pm 28.4	24.05 (2.68–192.2)
Aspartate aminotransferase (AST) (u/L)	218.80 \pm 714.52	56.5 (21–4,702)
Alanine aminotransferase (ALT) (u/L)	198.41 \pm 680.95	59.0 (21–4,569)
Albumin (g/dL)	2.78 \pm 0.29	2.7 (2.3–3.4)
Ferritin (mcg/L)	1870.70 \pm 1354.65	1381.5 (362–7,841)
D-dimer (ng/mL)	6,794.09 \pm 8,802.05	3,310 (340–35,200)
Procalcitonin (ng/mL)	9.92 \pm 20.9	1.37 (0.01–100)
C-reactive protein (CRP) (mg/L)	16.72 \pm 17.75	14.26 (0.7–115)
IL-6 expression in liver tissue (%)	62.49 \pm 18.87	65.0 (25–90)

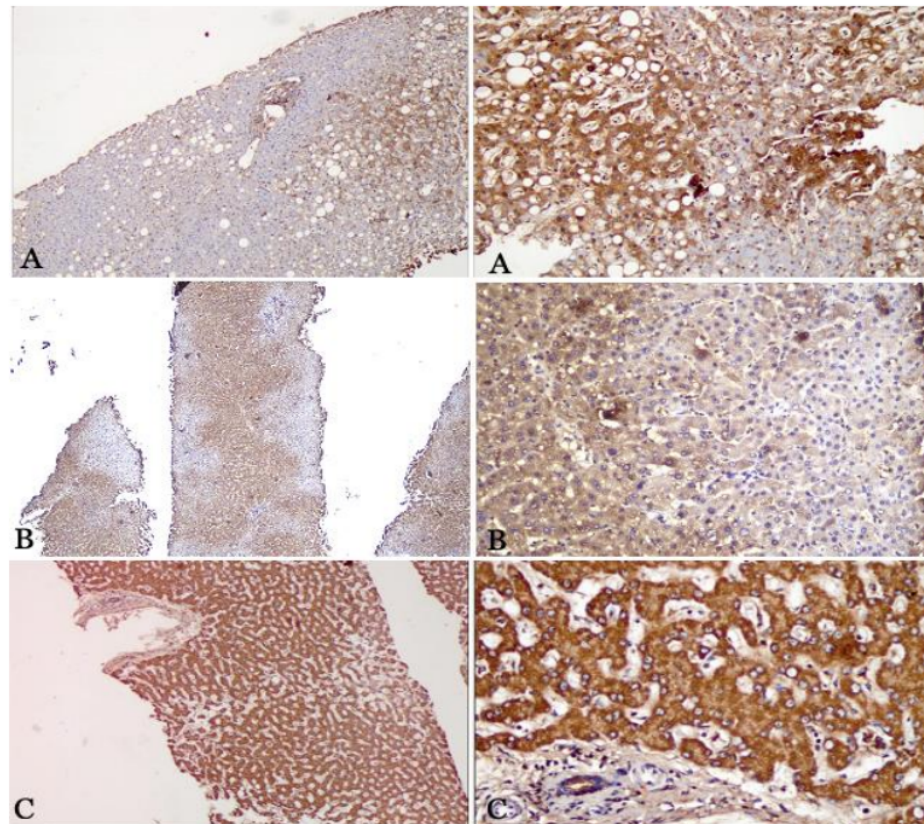


Figure 1. Interleukin 6 (IL-6) expression in patient hepatocytes with low and higher magnifications for Grade 1 (A), Grade 2 (B) and Grade 3 (C).

Table 2. Interleukin-6 (IL-6) expression in the liver tissue in fatal COVID-19 patients (n=47)

Interleukin-6 expression	Frequency (%)
No expression	0 (0.0)
Positive <30% (mild)	1 (2.1)
Positive 30%–<70% (moderate)	27 (57.4)
Positive ≥70% (strong)	19 (40.4)

IL-6 expression was further characterized based on clinical characteristics, including antiviral and non-antiviral medications, comorbidities, and causes of patients' death (**Table 3**). More than 50% of the patients receiving different antiviral therapies had moderate IL-6 expression, whereas the majority (75.0%) of those receiving tocilizumab (non-antiviral drug) showed strong IL-6 expression. Furthermore, almost half (47.6%) of patients with obesity showed moderate and strong IL-6 expression, and more than half (55.6%) of the patients passing away due to acute respiratory distress syndrome (ARDS) and septic shock had moderate IL-6 expression (**Table 3**).

Table 3. Interleukin-6 (IL-6) expression in fatal COVID-19 patients based on clinical characteristics

Characteristics	Total	<30% n (%)	≥30%–70% n (%)	≥70% n (%)	Mean±SD
Antiviral drug					
Isopranosine	46	1 (2.2)	26 (56.5)	19 (41.3)	62.43±19.07
Lopinavir-ritonavir	34	0 (0.0)	20 (58.8)	14 (41.2)	63.44 ±18.06
Oseltamivir	4	1 (25.0)	2 (50.0)	1 (25.0)	52.5±27.83
Favipiravir	3	0 (0.0)	2 (66.6)	1 (33.3)	60±27.84
Non-antiviral drug					
Dexamethasone	30	1 (3.3)	21 (70.0)	8 (26.7)	58.3±18.3
Tocilizumab	4	0 (0.0)	1 (25.0)	3 (75.0)	67.5±19.36
Paracetamol and non-steroidal anti-inflammatory drugs	32	1 (3.1)	20 (62.5)	11 (34.4)	60.38±19.30
Comorbidities					
Diabetes mellitus	36	0 (0.0)	22 (61.1)	14 (38.9)	62.47±18.91
Hypertension	27	0 (0.0)	17 (63.0)	10 (37.9)	62.81±18.5
Chronic kidney disease	12	0 (0.0)	5 (71.4)	7 (28.6)	59.71±17.95
Obesity	21	1 (4.8)	10 (47.6)	10 (47.6)	62.52±21.70
Gravida	1	0 (0.0)	1 (100.0)	0 (0.0)	40.0
Hepatitis B	3	0 (0.0)	0 (0.0)	3 (100.0)	61.0±18.56
Causes of mortality					
ARDS and septic shock	45	1 (2.2)	25 (55.6)	19 (42.2)	62.98±18.98
Cardiogenic shock	2	0 (0.0)	2 (100.0)	0 (0.0)	51.5±16.26

Correlation between interleukin 6 (IL-6) expression and liver injury

Almost 60% of the patients experienced liver injury, in which mild injury was found in 23.4%, moderate in 25.5%, and severe in 10.6% of the patients (**Table 4**). The result of the Spearman correlation test suggested no statistically significant correlation between IL-6 expression in liver tissue and the degree of liver injury in fatal COVID-19 patients ($r=0.152$, $p=0.309$).

Table 4. Degree of liver injury in fatal COVID-19 patients (n=47)

Degree of liver injury	Frequency (%)
No liver injury	19 (40.4)
Mild	11 (23.4)
Moderate	12 (25.5)
Severe	5 (10.6)

Discussion

COVID-19 is known to trigger a cytokine storm through overactivation of the immune system and uncontrolled release of cytokines. This condition leads to multiorgan injury that results in critical illness and death [16,23]. Liver damage at various degrees has been reported in COVID-19 patients and has been associated with a higher rate of mortality among patients [24]. Elevated levels of IL-6, which induce inflammatory signals, have been widely reported in COVID-19 patients [14,25,26]; however, studies regarding IL-6 expression in the liver tissues and its

association with the degree of liver injury are completely lacking. Therefore, in this study, we examined post-mortem core liver biopsies of deceased COVID-19 patients to identify IL-6 expression in liver tissue and evaluate its correlation with the degree of liver injury. Our immunohistochemical staining revealed the presence of IL-6 expression in the liver tissues of all patients, in which more than half (57.4%) showed moderate, whereas 40.4% exhibited strong IL-6 expression. This suggested an excessive immune activation, likely associated with the occurrence of a cytokine storm.

IL-6 serves as a primary mediator in the acute phase response to infections, and its release into circulation during an acute infection will subsequently stimulate the production of acute-phase proteins by the liver [27]. Thus, high expression of IL-6 in the liver tissues in this study was presumably associated with elevated serum IL-6 levels in COVID-19 patients. Consistent with this immunohistochemical finding, we also found increased levels of several inflammatory markers in the patients, including CRP, ferritin, D-dimer, and procalcitonin, confirming immune system overactivation in fatal COVID-19 patients. Studies found that elevated CRP, procalcitonin, D-dimer, and ferritin levels in COVID-19 patients have been associated with poor prognosis of the disease, including multi-organ failure and mortality [28-30].

Liver dysfunction, recognized by elevated levels of ALT, has been widely reported among patients with fatal COVID-19 [7,31]. The liver injury was caused by inflammation and damage by SARS-CoV-2, marked by elevated ALT and AST levels. Due to the similar nature with hepatitis, this liver injury was also suggested as coronaviral hepatitis or COVID-19 induced hepatitis (CIH) [8,32]. We found that more than half of the patients experienced liver injury, ranging from mild to severe. Similar to our finding, a previous study also reported abnormal AST and ALT levels in more than half of COVID-19 cases during the disease progression [7]. The prevalence of liver injury was higher in patients with fatal COVID-19 than those with moderate infection [31,33]. Furthermore, we also observed decreased levels of serum albumin among the patients, indicating not only impaired liver function but also a poor prognosis of the disease. Patients with normal albumin levels have been reportedly at a lower risk of mortality as compared to those with lower albumin levels [34,35].

Despite both IL-6 expression in the liver and increased serum ALT have been observed among fatal COVID-19 in the present study, the result of the correlation analysis indicated an insignificant correlation between IL-6 expression and the degree of liver injury ($r=0.152$ with $p=0.309$). This might suggest that IL-6 is not the only inflammatory factor contributing to liver injury in COVID-19 patients in this study. To date, no study has been carried out related to IL-6 expression in the liver tissue of COVID-19 patients through immunohistochemical staining, thus comparison of our study to others could not be performed. Several reported investigations focused mainly on serum or systemic IL-6 and other inflammatory markers and their association with liver injury in COVID-19 patients [9-11,36,37]. Other proinflammatory cytokines, besides IL-6, have been explored in COVID-19 patients and are typically linked to significant lung injury, including IL-1, IL-7, IL-12, interferon (IFN), tumor necrosis factor (TNF), macrophage inflammatory protein-1 alpha (MIP-1A), monocyte chemoattractant protein-1 (MCP-1), granulocyte-colony stimulating factor (GCSF), and interferon-inducible protein-10 (IP-10) [38]. Meanwhile, their contribution to liver damage is currently unclear. Not many studies examine the association between SARS-CoV-2 infection and inflammatory response, as well as the expression of cytokines like TNF, IL-1, IL-6, MCP-1, IL-15, and leukocyte markers (CD 4, CD 8, CD20, and CD 45), in an effort to confirm and define the role and expression of cytokines, particularly their effects on liver tissue [38]. According to a study, elevated levels of CRP, TNF, and IL-6 were linked to a higher risk of the severe COVID-19, which can cause liver damage [39].

In this study, other inflammatory markers, including CRP, serum ferritin, D-dimer were also significantly elevated. This result raised the possibility that these markers could also be used to identify liver injury in COVID-19 patients who are critically ill. COVID-19-associated liver injury in fact involves complex mechanisms. The lack of significance between IL-6 expression and the severity of liver damage in this present study may be due to other mechanisms that predominate in liver damage. In addition to systemic inflammation due to cytokine storms, other factors such as direct cytopathic effect of viral invasion, immune reconstitution due to the presence of SARS-CoV-2, drug toxicity, or liver hypoxia due to COVID-19 pneumonia might also suggestively

contribute to liver injury in COVID-19 patients [7,40-41]. The process of inflammation or damages in hepatocytes as a result of interaction between Kupffer cells and cytotoxic T-cell in which causing another condition that is similar with viral hepatitis [8]. In this study, patients with moderate and strong IL-6 expression in the liver tissue were treated with various antiviral and non-antiviral medications, including lopinavir/ritonavir, and anti-IL-6 (tocilizumab), leading to an assumption these drugs might play a role in hepatic injury induction among the patients [41]. Elevated CRP and NLR, which were also observed in the patients are also among potential risk factors for liver injury and COVID-19 severity [31,42].

This study possessed several limitations that should be addressed. The study was performed among fatal COVID-19 infections, in which their comorbidities at the time of admission or during treatment might serve as a confounding factor affecting the results. Furthermore, this study did not exclude the use of hepatotoxic drugs for COVID-19 therapy, which may contribute to liver injury in COVID-19 patients. Therefore, eliminating any plausible confounding factors influencing the results in future studies should be put into consideration.

Conclusion

We conducted a cross-sectional study among fatal COVID-19 patients to evaluate the association of IL-6 expression in the liver tissues with the degree of liver injury. All post-mortem core liver biopsies were positive for IL-6 immunohistochemical staining; and liver injury at various degree was observed in more than half of samples. However, the result showed no statistically significant correlation between IL-6 expression in the liver and the degree of liver injury among patients with fatal COVID-19, suggesting that IL-6 expression in the liver tissue was not the only parameter for the determination of liver injury in critically ill COVID-19 patients. Further investigations involving a larger number of samples with a wider range of COVID-19 severity, numerous cytokines, inflammatory cells, and markers, are required to obtain more accurate results.

Ethics approval

This study was approved by the Research Ethics Committee of Dr. Soetomo General Academic Hospital, Surabaya, Indonesia (No. 0022/KEPK/VII/2020).

Acknowledgments

The authors would like to thank all the staff at the Department of Internal Medicine and Department of Pathology Anatomy, Dr. Soetomo General Academic Hospital, Indonesia, as well as all the patients included in the study.

Competing interests

All the authors declare that there are no conflicts of interest.

Funding

This study received no external funding.

Underlying data

Derived data supporting the findings of this study are available from the corresponding author on request.

How to cite

Maimunah U, Maharani ARK, Soegiarto G, *et al.* Correlation between interleukin-6 expression in post-mortem core liver biopsy and degree of liver injury in patients with fatal COVID-19. Narra J 2023; 3 (3): e463 - <http://doi.org/10.52225/narra.v3i3.463>.

References

1. Parasher A. COVID-19: Current understanding of its pathophysiology, clinical presentation and treatment. Postgrad Med J 2021;97(1147):312-320.

2. Harapan H, Fajar JK, Supriono S, *et al.* The prevalence, predictors and outcomes of acute liver injury among patients with COVID-19: A systematic review and meta-analysis. *Rev Med Virol* 2022;32(3):e2304.
3. Wanjari M, Late S, Sharma R, *et al.* Long-term pulmonary and extra-pulmonary consequences of COVID-19: A comprehensive review of current evidence and future perspectives. *Narra J* 2023;3(2):e156.
4. Kondo R, Kawaguchi N, McConnell MJ, *et al.* Pathological characteristics of liver sinusoidal thrombosis in COVID-19 patients: A series of 43 cases. *Hepatol Res* 2021;51(9):1000-1006.
5. Jothimani D, Venugopal R, Abedin MF, *et al.* COVID-19 and the liver. *J Hepatol* 2020;73(5):1231-1240.
6. Saviano A, Baumert TF. Unraveling the role of liver sinusoidal endothelial cells in COVID-19 liver injury. *J Hepatol* 2021;75(3):503-505.
7. Zhang C, Shi L, Wang F-S. Liver injury in COVID-19: Management and challenges. *Lancet Gastroenterol Hepatol* 2020;5(5):428-430.
8. Parvez MK. COVID-19 and coronaviral hepatitis: Evidence of collateral damage. *Future Virol* 2020;15(6):325-329.
9. Da BL, Kushner T, El Halabi M, *et al.* Liver injury in patients hospitalized with coronavirus disease 2019 correlates with hyperinflammatory response and elevated Interleukin-6. *Hepatol Commun* 2021;5(2):177-188.
10. Diaz-Louzao C, Barrera-Lopez L, Lopez-Rodriguez M, *et al.* Longitudinal relationship of liver injury with inflammation biomarkers in COVID-19 hospitalized patients using a joint modeling approach. *Sci Rep* 2022;12(1):5547.
11. Effenberger M, Grander C, Grabherr F, *et al.* Systemic inflammation as fuel for acute liver injury in COVID-19. *Digestive and Liver Disease* 2021;53(2):158-165.
12. Sobotka LA, Esteban J, Volk ML, *et al.* Acute liver injury in patients hospitalized with COVID-19. *Digest Dis Sci* 2022;67:4204-4214.
13. Nardo AD, Schneeweiss-Gleixner M, Bakail M, *et al.* Pathophysiological mechanisms of liver injury in COVID-19. *Liver Int* 2021;41(1):20-32.
14. Que Y, Hu C, Wan K, *et al.* Cytokine release syndrome in COVID-19: A major mechanism of morbidity and mortality. *Int Rev Immunol* 2022;41(2):217-230.
15. Sonzogno A, Previtali G, Seghezzi M, *et al.* Liver and COVID 19 infection: A very preliminary lesson learnt from histological post-mortem findings in 48 patients. *Int Orthop* 2020;44:1-5.
16. Oliveira E, Parikh A, Lopez-Ruiz A, *et al.* ICU outcomes and survival in patients with severe COVID-19 in the largest health care system in central Florida. *PloS ONE* 2021;16(3):e0249038.
17. Hojyo S, Uchida M, Tanaka K, *et al.* How COVID-19 induces cytokine storm with high mortality. *Inflam Reg* 2020;40:1-7.
18. Triyono EA, Rehatta NM, Nabilah, *et al.* Clinical profiles and IL-6 level analysis of critical COVID-19 patients receiving Lopinavir-Ritonavir. *Folia Medica Indonesiana* 2023;59(2):92-98.
19. Kusumastuti EH, Wiratama PA, Ariani G, *et al.* Differences in interleukin-6 and interleukin-17 expression in COVID-19 post-mortem lung tissue biopsy compared with noncovid-19. *Pharmacogn J* 2022;14(6):887-892.
20. Beyerstedt S, Casaro EB, Rangel ÉB. COVID-19: Angiotensin-converting enzyme 2 (ACE2) expression and tissue susceptibility to SARS-CoV-2 infection. *Eur J Clin Micro Infect Dis* 2021;40:905-919.
21. Wieckowska A, Papouchado BG, Li Z, *et al.* Increased hepatic and circulating interleukin-6 levels in human nonalcoholic steatohepatitis. *A J Gastroenterol* 2008;103(6):1372-1379.
22. Phipps MM, Barraza LH, LaSota ED, *et al.* Acute liver injury in COVID-19: Prevalence and association with clinical outcomes in a large US cohort. *Hepatology* 2020;72(3):807-817.
23. Montazersaheb S, Hosseiniyan Khatibi SM, Hejazi MS, *et al.* COVID-19 infection: An overview on cytokine storm and related interventions. *Virol J* 2022;19(1):1-15.
24. Salk F, Uzundere O, Bıçak M, *et al.* Liver function as a predictor of mortality in COVID-19: A retrospective study. *Ann Hepatol* 2021;26:100553.
25. Aziz M, Fatima R, Assaly R. Elevated interleukin-6 and severe COVID-19: A meta-analysis. *J Med Virol* 2020;92(11):2283.
26. Zhu J, Pang J, Ji P, *et al.* Elevated interleukin-6 is associated with severity of COVID-19: A meta-analysis. *J Med Virol* 2021;93(1):35.
27. Norris CA, He M, Kang L-I, *et al.* Synthesis of IL-6 by hepatocytes is a normal response to common hepatic stimuli. *PloS ONE* 2014;9(4):e96053.
28. Zhong Z, Li H, Zhu J, *et al.* Clinical characteristics of 2,459 severe or critically ill COVID-19 patients: A meta-analysis. *Medicine* 2021;100(5):e23781.
29. Huang I, Pranata R, Lim MA, *et al.* C-reactive protein, procalcitonin, D-dimer, and ferritin in severe coronavirus disease-2019: A meta-analysis. *Ther Adv Res Dis* 2020;14:1753466620937175.

30. Mudatsir M, Fajar JK, Wulandari L, *et al.* Predictors of COVID-19 severity: A systematic review and meta-analysis. *F1000Research* 2020;9:1107.
31. Wang M, Yan W, Qi W, *et al.* Clinical characteristics and risk factors of liver injury in COVID-19: A retrospective cohort study from Wuhan, China. *Hepato Int* 2020;14:723-732.
32. Gadour E, Hassan Z, Shrwani K. COVID-19 induced hepatitis (CIH), definition and diagnostic criteria of a poorly understood new clinical syndrome. *Gut* 2020;69(Suppl 1):A1-A51.
33. Lu JY, Anand H, Frager SZ, *et al.* Longitudinal progression of clinical variables associated with graded liver injury in COVID-19 patients. *Hepato Int* 2021;15:1018-1026.
34. Kheir M, Saleem F, Wang C, *et al.* Higher albumin levels on admission predict better prognosis in patients with confirmed COVID-19. *PLoS ONE* 2021;16(3):e0248358.
35. Bannaga AS, Tabuso M, Farrugia A, *et al.* C-reactive protein and albumin association with mortality of hospitalised SARS-CoV-2 patients: A tertiary hospital experience. *Clin Med* 2020;20(5):463.
36. McConnell MJ, Kawaguchi N, Kondo R, *et al.* Liver injury in COVID-19 and IL-6 trans-signaling-induced endotheliopathy. *J Hepato* 2021;75(3):647-658.
37. Patra T, Meyer K, Geerling L, *et al.* SARS-CoV-2 spike protein promotes IL-6 trans-signaling by activation of angiotensin II receptor signaling in epithelial cells. *PLoS Pathog* 2020;16(12):e1009128.
38. Frisoni P, Neri M, D'Errico S, *et al.* Cytokine storm and histopathological findings in 60 cases of COVID-19-related death: From viral load research to immunohistochemical quantification of major players IL-1 β , IL-6, IL-15 and TNF- α *Forensic Sci Med Pathol* 2022;18(1):4-19.
39. Amiri-Dashatan N, Koushki M, Ghorbani F, *et al.* Increased inflammatory markers correlate with liver damage and predict severe COVID-19: A systematic review and meta-analysis. *Gastroenterol Hepato Bed Bench* 2020;13(4):282-291.
40. Clark R, Waters B, Stanfill AG. Elevated liver function tests in COVID-19: Causes, clinical evidence, and potential treatments. *Nurse Pract* 2021;46(1):21.
41. Yu D, Du Q, Yan S. *et al.* Liver injury in COVID-19: Clinical features and treatment management. *Virology* 2021;18:121.
42. Laurentia LM, Effendi RF. Clinical profiles, laboratory, radiological and outcome of COVID-19 elderly patients in Waikabubak Regional General Hospital, West Sumba. *Indones J Trop Infect Dis* 2022;10(2):69-75.

1. Correlation between interleukin-6 expression in post-mortem core liver biopsy

ORIGINALITY REPORT

16%

SIMILARITY INDEX

12%

INTERNET SOURCES

10%

PUBLICATIONS

%

STUDENT PAPERS

PRIMARY SOURCES

- | | | |
|---|--|------|
| 1 | Anna Julia Pietrobon, Franciane Mouradian Emidio Teixeira, Maria Notomi Sato. "Immunosenescence and Inflammaging: Risk Factors of Severe COVID-19 in Older People", <i>Frontiers in Immunology</i> , 2020
Publication | <1 % |
| 2 | hygeiadesenv.fsp.usp.br
Internet Source | <1 % |
| 3 | m.moam.info
Internet Source | <1 % |
| 4 | www.escholar.manchester.ac.uk
Internet Source | <1 % |
| 5 | Pripatnanont, P.. "The use of SPECT to evaluate growth cessation of the mandible in unilateral condylar hyperplasia", <i>International Journal of Oral & Maxillofacial Surgery</i> , 200506
Publication | <1 % |
-

6

Syahrul Syahrul, Imran Imran, Nasrul Musadir, Vivi Keumala Mutiawati. "Severe Acute Respiratory Syndrome Coronavirus 2 Infection is Associated with Homocysteine Level and Clinical Outcomes in Ischemic Stroke Patients", Open Access Macedonian Journal of Medical Sciences, 2022

Publication

<1 %

7

cancerci.biomedcentral.com

Internet Source

<1 %

8

cdn.amegroups.cn

Internet Source

<1 %

9

medvestnik.stgmu.ru

Internet Source

<1 %

10

pdfs.semanticscholar.org

Internet Source

<1 %

11

Linlin Cheng, Haolong Li, Liubing Li, Chenxi Liu, Songxin Yan, Haizhen Chen, Yongzhe Li. "Ferritin in the coronavirus disease 2019 (COVID-19): A systematic review and meta-analysis", Journal of Clinical Laboratory Analysis, 2020

Publication

<1 %

12

Nastaran Hadizadeh, Mousa Naderi, Jafar Khezri, Meysam Yazdani, Mehdi Shamsara, Ehsan Hashemi. "Appraisal of SARS-CoV-2

<1 %

mutations and their impact on vaccination efficacy: an overview", Journal of Diabetes & Metabolic Disorders, 2022

Publication

13

Rubin, P.. "Ectropion following excision of lower eyelid tumours and full thickness skin graft repair", British Journal of Plastic Surgery, 200504

Publication

<1 %

14

ehjournal.biomedcentral.com

Internet Source

<1 %

15

f1000researchdata.s3.amazonaws.com

Internet Source

<1 %

16

jag.journalagent.com

Internet Source

<1 %

17

multimedia.elsevier.es

Internet Source

<1 %

18

www.nature.com

Internet Source

<1 %

19

Minyahil Woldu, Omary Minzi, Workineh Shibeshi, Aster Shewamare, Ephrem Engidawork. "Biomarkers and prevalence of cardiometabolic syndrome among people living with HIV/AIDS, Addis Ababa, Ethiopia: a hospital-based, observational study.", Research Square Platform LLC, 2021

Publication

<1 %

20	academic.oup.com Internet Source	<1 %
21	doaj.org Internet Source	<1 %
22	repository.unair.ac.id Internet Source	<1 %
23	repository.unmuhjember.ac.id Internet Source	<1 %
24	www.intechopen.com Internet Source	<1 %
25	Haylee R. Hammond, Shainnel O. Eans, Thomas J. Cirino, Subramaniam Ananthan et al. "SRI-30827, a novel allosteric modulator of the dopamine transporter, alleviates HIV-1 Tat-induced potentiation of cocaine conditioned place preference in mice", <i>NeuroImmune Pharmacology and Therapeutics</i> , 2023 Publication	<1 %
26	fjfsdata01prod.blob.core.windows.net Internet Source	<1 %
27	iknow-imeri.fk.ui.ac.id:8080 Internet Source	<1 %
28	jcdr.net Internet Source	<1 %

29

Abdollah Jafarzadeh, Maryam Nemati, Sara Jafarzadeh. "Contribution of STAT3 to the pathogenesis of COVID-19", *Microbial Pathogenesis*, 2021

Publication

<1 %

30

Jun Zeng, Zhong-Hua Tang, Shuang Liu, Shan-Shan Guo. "Clinicopathological significance of overexpression of interleukin-6 in colorectal cancer", *World Journal of Gastroenterology*, 2017

Publication

<1 %

31

Kai Zhu, Olivia Tsai, Daljeet Chahal, Trana Hussaini, Eric M Yoshida. "COVID-19 and Liver Disease - An Evolving Landscape", *Seminars in Liver Disease*, 2023

Publication

<1 %

32

Saminan Saminan, Linda Julisafrida, Muhammad Ridwan, Nurul Fajri. "COVID-19 Pandemic: What Considerations Should Be Taken during the Assessment and Management of COPD Exacerbation?", *Open Access Macedonian Journal of Medical Sciences*, 2022

Publication

<1 %

33

dokumen.pub

Internet Source

<1 %

34

files.covid19treatmentguidelines.nih.gov

Internet Source

<1 %

35

genomebiology.biomedcentral.com

Internet Source

<1 %

36

science.rsu.lv

Internet Source

<1 %

37

test.dovepress.com

Internet Source

<1 %

38

www.annalsmedres.org

Internet Source

<1 %

39

www.cureus.com

Internet Source

<1 %

40

www.wjgnet.com

Internet Source

<1 %

41

"Day 4 - Tuesday 2 September 2003",
European Heart Journal, 09/02/2003

Publication

<1 %

42

Zhiwei Zheng, Xiaobo Li, Pan Chen, Yu Zou et al. "Design and synthesis optimization of novel diimide indoles derivatives for ameliorating acute lung injury through modulation of NF- κ B signaling pathway", Bioorganic Chemistry, 2023

Publication

<1 %

43

clinicaltrials.gov

Internet Source

<1 %

44

dev.bp-frontend.tf.aws.bmjgroup.com

Internet Source

<1 %

45

egonw.github.io

Internet Source

<1 %

46

eprints.nirt.res.in

Internet Source

<1 %

47

f6publishing.blob.core.windows.net

Internet Source

<1 %

48

journals.lww.com

Internet Source

<1 %

49

topsecretapiaccess.dovepress.com

Internet Source

<1 %

50

vbn.aau.dk

Internet Source

<1 %

51

warm.dovepress.com

Internet Source

<1 %

52

watermark.silverchair.com

Internet Source

<1 %

53

www.aasld.org

Internet Source

<1 %

54

www.dach-praevention.eu

Internet Source

<1 %

- 55 www.gutnliver.org
Internet Source <1 %
-
- 56 www.jcdr.net
Internet Source <1 %
-
- 57 www.researchgate.net
Internet Source <1 %
-
- 58 www.tandfonline.com
Internet Source <1 %
-
- 59 Enas R Mohamed, Dina Ragab, Mohamed Taeimah, Heba Shaloot. "Risk factors of intensive care admission and mortality in a cohort of 111 Egyptian COVID-19 patients", Egyptian Journal of Anaesthesia, 2022
Publication <1 %
-
- 60 Fabiola A. Righi, Richard S. Vander Heide, Rondell P. Graham, Marie Christine Aubry et al. "A case-control autopsy series of liver pathology associated with novel coronavirus disease (COVID-19)", Annals of Diagnostic Pathology, 2024
Publication <1 %
-
- 61 Jiang, Xueqiang, Zhihao Li, Shengfang Jiang, Xuefei Tong, Xiaojing Zou, Wan Wang, Zhengang Zhang, Liang Wu, and Deying Tian. "Lipoxin A4 exerts protective effects against experimental acute liver failure by inhibiting <1 %

the NF- κ B pathway", International Journal of Molecular Medicine, 2016.

Publication

62

Krishnaraj Chadaga, Srikanth Prabhu, Vivekananda Bhat, Niranjana Sampathila, Shashikiran Umakanth, Rajagopala Chadaga. "Artificial intelligence for diagnosis of mild-moderate COVID-19 using haematological markers", Annals of Medicine, 2023

Publication

<1 %

63

Piero Boraschi, Luigi Giugliano, Giuseppe Mercogliano, Francescamaria Donati, Stefania Romano, Emanuele Neri. "Abdominal and gastrointestinal manifestations in COVID-19 patients: Is imaging useful?", World Journal of Gastroenterology, 2021

Publication

<1 %

64

Cyriac Abby Philips, Deepak Madhu, Philip Augustine. "Investigating the correlation between COVID-19 and the progression of chronic liver disease", Expert Review of Gastroenterology & Hepatology, 2023

Publication

<1 %

65

Dinesh Walia, Anoop Saraya, Deepak Gunjan. "COVID-19 in patients with pre-existing chronic liver disease – predictors of outcomes", World Journal of Virology, 2023

Publication

<1 %

66

Haohui Deng, Yuzhen Mai, Huiyuan Liu, Jialong Guan. "Clinical characteristics of liver injury in SARS-CoV-2 Omicron variant- and Omicron subvariant-infected patients", *Annals of Hepatology*, 2022

Publication

<1 %

67

Maryam Gholamalizadeh, Faezeh Rabbani, Mina Ahmadzadeh, Azadeh Hajipour et al. "The association between vitamin D intake with inflammatory and biochemical indices and mortality in critically ill patients with COVID-19: A case-control study", *Immunity, Inflammation and Disease*, 2023

Publication

<1 %

68

Qiang Li, Jianliang Zhang, Yun Ling, Weixia Li, Xiaoyu Zhang, Hongzhou Lu, Liang Chen. "A simple algorithm helps early identification of SARS-CoV-2 infection patients with severe progression tendency", *Infection*, 2020

Publication

<1 %

69

S L-F Pender. "Systemic administration of the chemokine macrophage inflammatory protein 1 exacerbates inflammatory bowel disease in a mouse model", *Gut*, 2005

Publication

<1 %

70

Sławomir Butkiewicz, Artur Zaczyński, Michał Hampel, Igor Pańkowski, Robert Gałązkowski, Patryk Rzońca. "Analysis of Risk Factors for In-

<1 %

Hospital Death Due to COVID-19 in Patients Hospitalised at the Temporary Hospital Located at the National Stadium in Warsaw: A Retrospective Analysis", International Journal of Environmental Research and Public Health, 2022

Publication

Exclude quotes On

Exclude matches Off

Exclude bibliography On

1. Correlation between interleukin-6 expression in post-mortem core liver biopsy

GRADEMARK REPORT

FINAL GRADE

GENERAL COMMENTS

/100

PAGE 1

PAGE 2

PAGE 3

PAGE 4

PAGE 5

PAGE 6

PAGE 7

PAGE 8

PAGE 9
