

DAFTAR PUSTAKA

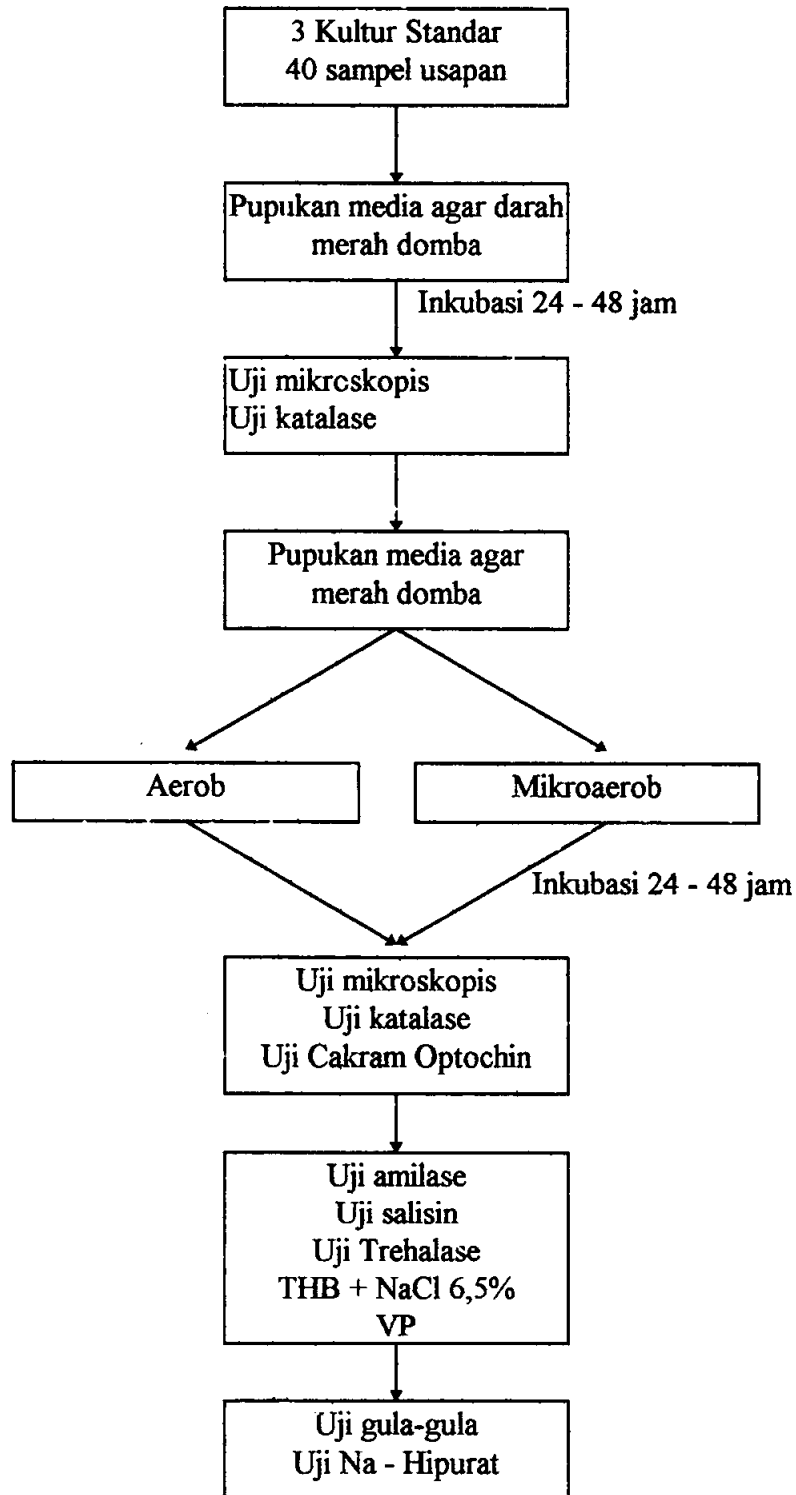
- Batis, J. , Senk L and Brogalez . 1966. Streptokokni endokarditis u svinja . Vet. Artiv. 36(11 - 12).
- Boetner, A.G., Mariane. B and V. Bilee Hansen 1987. *S.suis* infection in Danish pig and experimental infection with *S.suis* serotype 7 . J. Path. Mic. Imm. 95 : 233 - 239.
- Burgenner, W M R. Bialek. 1989. Fatal *Streptococcus suis* Septicemia in an abattoir worker. Eur. J. Clin. Mic. Infect. 7 : 306 - 307.
- Chau, P. Y ., C. Y. Huang and R. Huang. 1983. Streptococcus suis meningitis an important under diagnosed disease in Hong Kong. Med. J. Aust 1: 414 - 417.
- Clifton Hadley, F. A. 1989. *Streptococall* meningitis in pigs. Pig News. Info. 10 : 9 - 12.
- De Moor, C.E. 1963. Septicaemie infection in pig caused by haemolytic *Streptococci* of new Lancefield groups designated R, S, and T. Antonie V. Leeuwenhoek. J. Mic. 29: 272 - 280.
- Devriese, L.A., K. Ceysens, J. Hommez, R. Killper- Baelz and K.H. Scheleifer. 1991. Characteristics of different *S.suis* ecovar and description of a simplified identification method . Vet. Mic. 26: 141 - 150.
- Devriese, L.A. and F. Haesebrouck. 1992. *S. suis* infections in horses and cats. Vet. Rec. 130 : 380.
- Elliott, S.D. 1966. Streptococcal infections in young pig . An immunological study of thecausative agent (P.M. *Streptococcus*). J. Hyg. 64: 205 -212.
- Elliott, S.D., M. Mc. Carty and R.C. Lancefield. 1977. Teichoic acid of groups D Streptococci with special reference to strains of pig meningitis . J. Exp. Med. 145: 490 -492.
- Erickson, E.D., A.R. Doster and T.S. Pokory . 1984. Isolation of *S.suis* from Nebraska. J. Am. Vet. Med. Assoc. 185 : 666 - 668.

- Estoepangestie, A.T.S. 1996. Gambaran sifat-sifat biokimiawi *S.suis* di beberapa negara Eropa. Med. Ked. Hewan. 12 (3): 200 - 207.
- Estoepangestie, S and C.H. Laemmler. 1993. Distribution of capsular type 1 to 28 and further characteristics of *S.suis* isolates from various European Countries. Zbl. Bakt. 279 : 394 - 403.
- Frobisher. 1962. 7th ed. W. B. Saunders company . Philadelphia. London.
- Fuller, A.T. 1883 . The formamide method for the extraction of polysaccharide from haemolytic Streptococci. Br. J. Exp. Pathol. 19 : 130 - 139.
- Gottschalk, M., R. Higgins, M. Jaques, K.R. Mittal and J. Henrichsen. 1989. Description of 14 New Capsular Types of *S. suis*. J. Clin. Mic. 27 (12) : 2633 - 2636.
- Gottschalk, M., R. Higgins, M. Jacques, M. Beaudoin and J. Herrichsen. 1991. Isolation and characterization of six new capsular types (23 through 28) of *S.suis* . J. Clin. Mic. 29: 2590 - 2594.
- Gottschalk, M., R. Higgins and M. Beaudoin. 1990. Distribution of *S.suis* capsular type 9 to 22 according to the side of isolation. Can. Vet. J. 31 : 393.
- Higgins, R and M. Gottschalk, Review Article, 1990. An up date on *S.suis* identification. J. Vet. Diagn. Invest 2 : 249 - 252.
- Higgins, R., M. Gottschalk, G. Fecteau, R. Sauvegeau, S. De Gurse and D. D. Tremblay. 1990. Isolation *S. suis* from cattle. Can. Vet. J. 31 . 529.
- Hommez, J., J. Wullepit, P. Cassimon, F. Castryck, K.Ceyssens and L.A. Devriese. 1988. *S.suis* and other Streptococcal species as cause of extramammary infection in ruminants. Vet. Rec. 123 : 626 - 627.
- Hommez, J., L. A. Devriese., J. Henricsen and F. Castryck. 1986. Identification and carateristization of *S. suis*. Vet. Mic. 11 : 349 - 355.
- Hwang, M. and G. M. Ederer. 1975. Rapid hippurate hydrolysis method for presumtive identification of group B *Streptococci*. J. Clin. Microbiol. 1: 114 - 115.

- Meecham, J. S. and R.C. Worth . 1992. Persistent diplopia following *Streptococcus suis* type 2 meningitis. J. Royal Society . Med. 85(9) : 579 - 580.
- Paul, I., Cristea, S and Gherashum, p. 1971. Observation bacteriologi morfopatologie intro enzootic Streptococci. Rev. Zootech. Med. Vet. 21(12) : 65.
- Peetermans, W. E.C., B. G. Moffib and J. Thompson. 1989. Bacterial Endocarditis Caused by *Streptococcus suis* Type 2. J. Infect. Disease. 159 (3) : 595 - 596.
- Pelczar, M. J. Jr. and E. C. S. Chan. 1986. Dasar-dasar Mikrobiologi . Jilid 1 dan 2 . Universitas Indonesia Press. Jakarta.
- Perch, B., K. B. Pedersen and J. Henrichsen. 1983. Serology of Capsulated *Streptococci* Pathogenic for Pigs six New Serotypes of *S. suis* . J. Clin. Mic. 17 (6) : 993 - 996.
- Ressang, A.A 1984. Patologi khusus Veteriner. Edisi kedua. Team leader IFAD Project : BCBIU. Denpasar, Bali.
- Robertson, D. and D. K Blackmore. 1987. The detection of pigs carrying *S.suis* type 2. New Zealand. Vet. J. 35 : 1 - 4.
- Sanford, S.E and Anne M.E.T. 1982 *S.suis* tipe II Associated diseases in swine : Observation of one year study, J. American. Vet. Med. 1: 673 - 675
- Shuman, R. D. And F. Ross. 1975. Diseases of Swine. 4th ed. The Iowa State University Press, AMES, IOWA U.S.A.
- Singleton, P. 1992. Introduction to bacteria. 2nd ed. John Wiley and Sons ltd. Chiechester. England.
- Tarradas, C., A. Arenas, A. Maldonado, I. Luque, A. Miranda and A. Perea. 1994. Identification of *S. suis* isolated from swine : Proposal for biocemichal parameters. J. Clin. Mic. 2 : 578 -580.
- Trottier, S., R Higgins., G. Brochu and M. Gottschalk. 1991. A case of human endocarditis due to *S.suis* in North America. Review of infection diseases : 13 1251 - 1252.

LAMPIRAN

Lampiran 1. Skema Isolasi dan Identifikasi *S. suis* dari Sampel dan Kultur Standar



Lampiran 2. Hasil pemupukan pada media agar darah merah domba

Sampel	No	Pertumbuhan pada media agar darah merah domba	Sampel	No	Pertumbuhan pada media agar darah merah domba
A	1	+++	B	1	+++
	2	+++		2	-
	3	+++		3	+++
	4	++		4	+++
	5	-		5	++
	6	+++		6	+++
	7	++		7	+++
	8	+++		8	+++
	9	+++		9	-
	10	+++		10	-
	11	+		11	+
	12	+++		12	+
	13	+++		13	++
	14	++		14	+++
	15	+++		15	+++
	16	+++		16	++
	17	+		17	-
	18	-		18	+++
	19	++		19	-
	20	++		20	-

Sampel	No	Pertumbuhan pada media agar darah merah domba
C	1	+++
	2	+++
	3	+++

Keterangan :

A	= sampel dari peternakan babi	2C	= kultur standar P ₃ R
		3C	= kultur standar P ₃ Ae
B	= sampel dari RPH	+++	= koloni tumbuh baik
C	= sampel dari Kultur standar <i>S. suis</i>	++	= koloni tumbuh baik sekali
1-10 (A-B)	= sampel dari saluran pernafasan atas	+	= koloni tumbuh cukup
11- 20 (A-B)	= sampel dari mukosa vagina	-	= tidak ada koloni pertumbuhan
1C	= kultur standar RSS ₂		

Lampiran 3. Hasil uji Mikroskopik dan uji katalase

Sampel	No	Motil	Kokus	Diploform/bentuk rantai pendek	Pewarnaan gram	Uji katalase	
A	1	-	+	+	+	-	
	2	-	+	+	+	-	
	3	-	+	+	+	-	
	4	-	+	+	+	-	
	6	-	+	+	+	-	
	7	-	+	+	+	-	
	8	-	+	+	+	-	
	9	-	+	+	+	-	
	10	-	+	+	+	-	
	11	-	+	+	-	+	
	12	-	+	+	+	-	
	13	-	+	+	+	-	
	14	-	+	+	+	-	
	15	-	+	+	+	-	
	16	-	+	+	+	-	
	17	-	-	-	-	+	+
	19	-	+	+	+	+	-
	20	-	+	+	+	+	-
	B	1	-	+	+	+	-
		3	-	+	+	+	-
4		-	+	+	+	-	
5		-	-	+	+	-	
6		-	-	-	-	-	
7		-	+	+	+	-	
8		-	+	+	+	-	
11		-	+	+	+	-	
12		-	+	+	+	-	
13		-	+	+	+	-	
14		-	+	+	+	-	
15		-	-	-	-	+	+
16		-	-	-	-	+	+
18		-	+	+	+	+	-
C	1	-	+	+	+	-	
	2	-	+	+	+	-	
	3	-	+	+	+	-	

Lampiran 4. Hasil pemeriksaan pertumbuhan pada suasana aerob dan mikroaerob serta sifat hemolisa

Sampel	No	Pertumbuhan dalam suasana		Sifat hemolisa	
		Aerob	Mikroaerob	α	β
A	1	+	-	+	-
	2	+	-	+	-
	3	+	-	+	-
	4	+	-	+	-
	6	+	-	+	-
	7	+	-	+	-
	8	+	-	+	-
	9	+	-	+	-
	10	+	-	+	-
	12	-	+	-	+
	13	-	+	-	+
	14	+	-	+	-
	15	-	+	-	+
	16	-	+	-	+
19	+	-	+	-	
20	+	-	+	-	
B	1	+	-	+	-
	3	+	-	+	-
	4	+	-	+	-
	7	+	-	+	-
	8	+	-	+	-
	11	-	-	-	-
	12	-	-	-	-
	13	-	+	-	+
14	-	-	-	-	
18	-	+	-	+	
C	1	+	-	+	-
	2	+	-	+	-
	3	+	-	-	+

Lampiran 5. Hasil Pemeriksaan Uji Mikroskopis, Uji Katalase, dan Uji Cakram Optochin

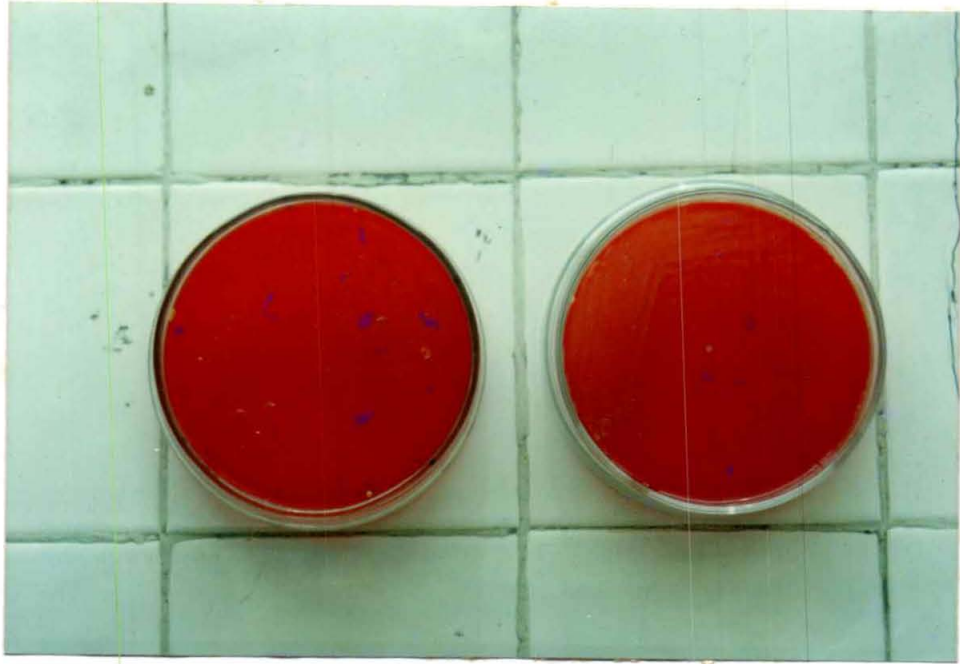
Sampel	No	Kokus	Diploform/ Bentuk rantai	Pewarnaan gram	Uji katalase	Uji Cakram Optochin	
A	1	+	+	+	-	-	
	2	+	+	+	-	-	
	3	+	+	+	-	-	
	4	+	+	+	-	-	
	6	+	+	+	-	-	
	7	+	+	+	-	-	
	8	+	+	+	-	-	
	9	+	+	+	-	-	
	10	+	+	+	-	-	
	12	+	+	+	-	-	
	13	+	+	+	-	-	
	14	+	+	+	-	-	
	15	+	+	+	-	-	
	16	+	+	+	-	-	
	19	+	+	+	-	-	
	20	+	+	+	-	-	
	B	1	+	+	+	-	-
		3	+	+	+	-	-
		4	+	+	+	-	-
		7	+	+	+	-	-
8		+	+	+	-	-	
14		+	+	+	-	-	
C	1	+	+	+	-	-	
	2	+	+	+	-	-	
	3	+	+	+	-	-	

Lampiran 6. Hasil Pre-Identifikasi Test secara Biokimiawi

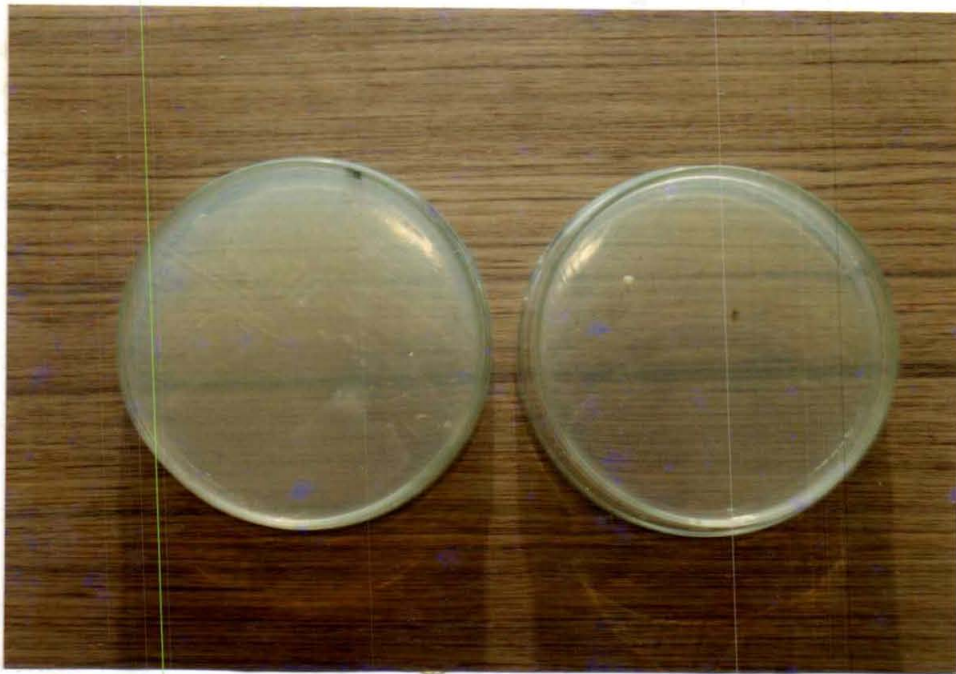
Sampel	No	Amilase	Salisin	Trehalose	THB + NaCl 6,5 %	VP
A	1	+	+	+	-	-
	2	+	+	+	-	-
	3	+	+	+	-	-
	4	+	+	+	-	-
	6	+	+	+	-	-
	7	+	+	+	-	-
	8	+	+	+	-	-
	9	+	+	+	-	-
	10	+	+	+	-	-
	12	+	+	+	-	-
	13	+	+	+	-	-
	14	+	+	-	-	-
	15	+	-	+	-	-
	16	+	+	+	-	-
19	+	+	+	-	-	
20	+	+	-	-	+	
B	1	+	-	+	+	+
	3	-	-	+	-	+
	4	-	-	+	+	+
	7	+	+	+	-	-
	8	+	+	+	-	-
	14	+	+	+	-	-
18	+	+	+	-	-	
C	1	+	+	+	-	-
	2	+	+	+	-	-
	3	+	+	+	-	-

Lampiran 7. Hasil Uji Gula-Gula dan Uji Na-Hipurat

Sampel	No	Glukosa	Laktosa	Maltosa	Manitol	Sukrosa	Sorbitol	Na - Hipurat
A	1	+	+	+	-	+	-	-
	2	+	+	+	-	+	-	-
	3	+	+	-	-	+	-	-
	4	+	+	+	-	+	-	-
	6	+	+	-	-	+	-	-
	7	+	+	+	-	+	-	-
	8	+	+	+	-	+	-	-
	9	+	+	+	-	+	-	-
	10	+	+	+	+	+	-	-
	12	+	+	-	-	+	-	-
	13	+	+	+	-	+	-	-
	14	+	+	+	-	+	-	-
	15	+	+	+	-	+	-	-
	16	+	+	+	-	+	-	-
19	+	+	+	-	+	-	-	
B	7	+	+	+	-	+	+	-
	8	+	+	+	-	+	+	-
	14	+	+	+	-	-	+	-
	15	+	+	+	-	+	+	-
C	1	+	+	+	-	+	-	-
	2	+	+	+	-	+	-	-
	3	+	+	+	-	+	-	-



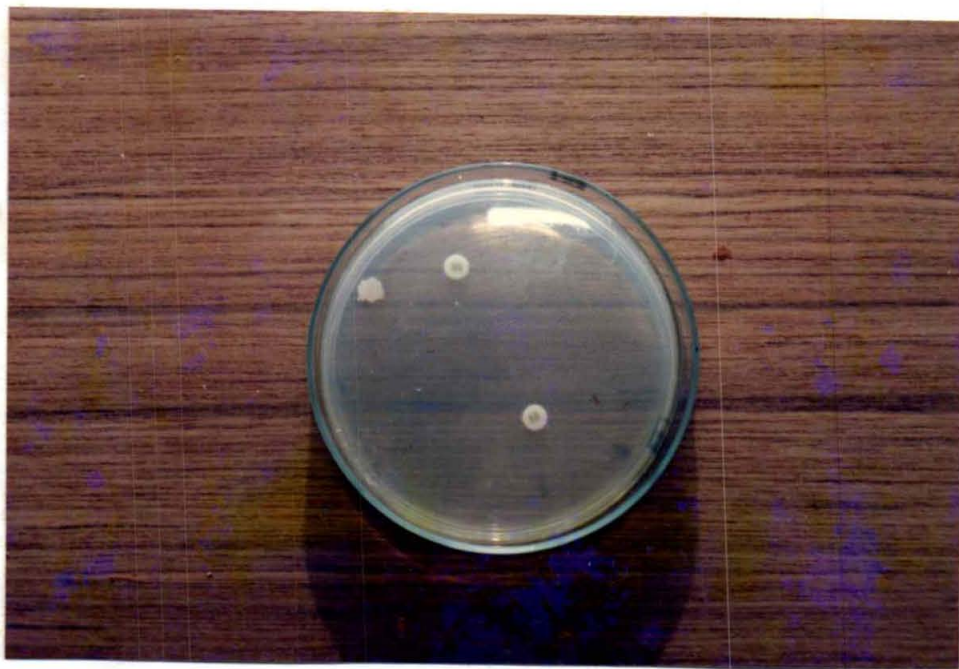
Gambar 1. Isolat *S.suis* yang diambil dari peternakan babi (kanan) dan RPH (kiri), pada media agar merah darah domba yang menunjukkan sifat β hemolisis.



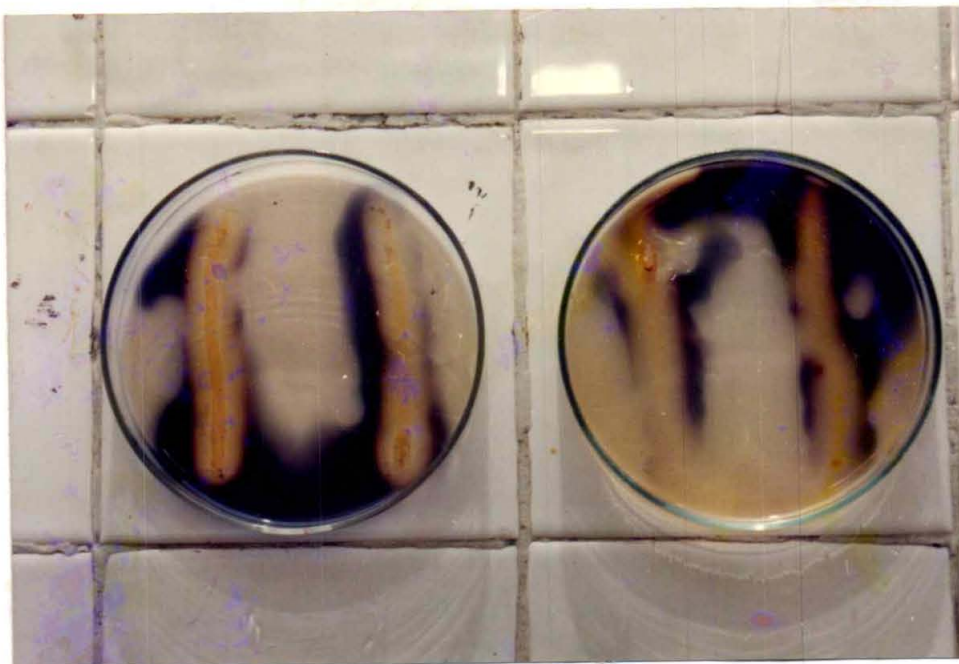
Gambar 2. Isolat *S.suis* yang diambil dari peternakan babi (kiri) dan RPH (kanan), pada Nutrient agar



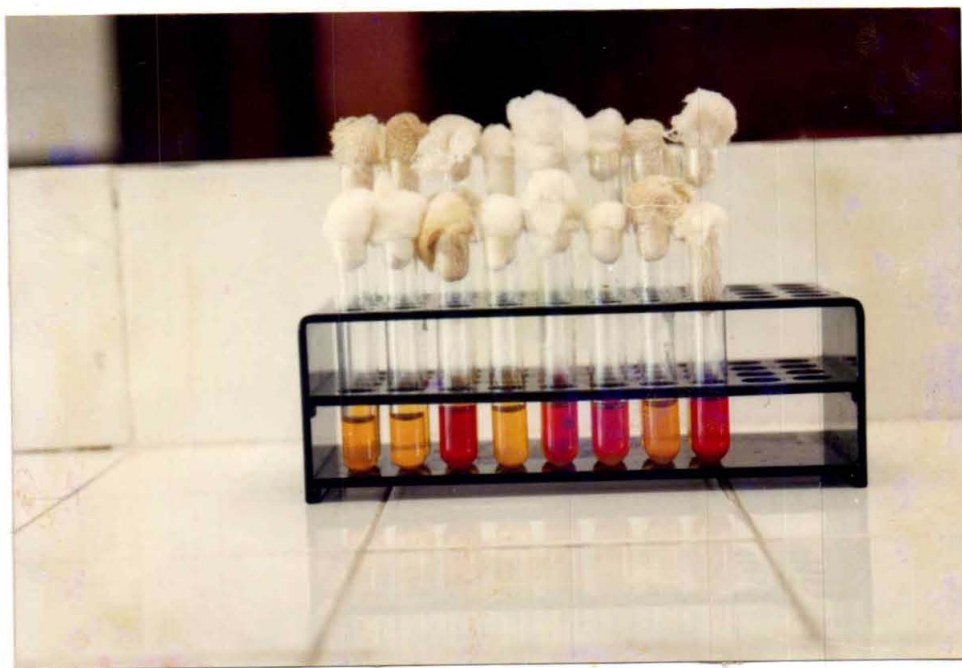
Gambar 3. Isolat *S.suis* yang diambil dari peternakan babi dan RPH, tidak tumbuh pada media THB + NaCl 6,5 % (kiri) Isolat *Staphylococcus aureus* pada media media THB + NaCl 6,5 % (kanan)



Gambar 4. Isolat *S.suis* yang diambil dari peternakan babi (atas) dan RPH (bawah), pada uji cakram optochin



Gambar 5. Isolat *S.suis* yang diambil dari peternakan babi (kiri) dan RPH (kanan), pada uji amilase setelah ditetesi lugol, disekeliling koloni kuman menampakkan hasil positif yang ditandai dengan adanya zona terang pada media.



Gambar 6. Uji gula-gula isolat *S.suis* dari peternakan babi dan RPH dari kiri ke kanan glukosa, laktosa, manitol, maltosa, sorbitol, sukrosa, salisin, dan trehalose. Warna kuning menunjukkan hasil positif dan warna merah menunjukkan hasil negatif.