

Early diagnosis and management

by Aditiawarman Aditiawarman

Submission date: 06-May-2024 10:26AM (UTC+0800)

Submission ID: 2371780379

File name: Early_diagnosis_and_management.pdf (339.46K)

Word count: 3095

Character count: 17312

CASE REPORT

30

Early diagnosis and management of inseparable conjoint twins. A low-middle-income country experience

Aditiawarman *

Department of Obstetrics and Gynecology, Faculty of Medicine, Universitas Airlangga,
Dr. Soetomo General Academic Hospital, Surabaya, Indonesia.

Article Info	ABSTRACT 31
<p>Received Jan 4, 2024 Revised Feb 20, 2024 Accepted Mar 1, 2024 Published Apr 1, 2024</p> <p>*Corresponding author: Aditiawarman aditiawarman@fk.unair.ac.id</p> <p>Keywords: Conjoined twins Non-separable Cephalon-thoraco-abdominophagus Early diagnosis</p>	<p>Objectives: To discuss the crucial early diagnosis of conjoined twins to determine the type and prognosis.</p> <p>Case Report: A 27-year-old woman was referred to the type A referral hospital with suspicion of congenital abnormalities at 17 weeks of pregnancy. Ultrasound results showed intrauterine monochorionic monoamniotic twins with babies fused on their heads to the urogenital part. The MRI showed a craniopagus, suspected meningomyelocele, and severe bilateral hydronephrosis in the second baby. Due to non-separable cases and a bad prognosis for the fetus, the pregnancy was terminated using misoprostol induction and inserting a balloon catheter. The fetus is born weighing 400 g and 20 cm in length. Conjoined twins obtained the rostral type: a fused head with two faces, a fused thorax until the lower abdomen with one umbilicus, and two pairs of hands and feet. The diagnosis of conjoint twins becomes a problem in early pregnancy, mostly in developing countries. Early diagnosis of conjoined twins during prenatal examination is critical for ascertaining the prognosis of the fetus, guiding parental counseling over appropriate courses of action, and potentially enabling the termination of the pregnancy to prevent maternal stress and complications.</p> <p>Conclusion: Conjoined twins should be identified as soon as feasible to establish the best course of management for both mother and fetus. Ultrasonography and MRI are modalities for determining the diagnosis and prognosis of conjoined twins.</p>

Copyright: © 2024 Majalah Obstetri & Ginekologi. pISSN:0854-0381 eISSN:2598-1013

This is an open-access article distributed under the terms of the Creative Commons Attribution

License as stated in <https://creativecommons.org/licenses/by-nc-sa/4.0/deed.id>



How to cite: Aditiawarman. Diagnosis and management of conjoint twins in early pregnancy. *Majalah Obstetri & Ginekologi (Journal of Obstetrics & Gynecology Science)*. 2024;32(1):68-73. doi: 10.20473/mog.V32I12024.68-73.

Highlights:

1. Conjoined twins have captivated mankind for centuries due to the rarity of this birth type; nonetheless, physicians have constantly encountered difficulties in dealing with conjoined twins.
2. Early diagnosis of conjoined twins during prenatal examination is critical for ascertaining the prognosis of the fetus, guiding parental counseling over appropriate courses of action, and potentially enabling the termination of the pregnancy.
3. First-trimester ultrasonography and MRI are complementary modalities in determining the diagnosis and prognosis of conjoined twins in early pregnancy.



INTRODUCTION

Conjoined twins occur due to abnormalities in the process of embryogenesis in monoamniotic monochorionic pregnancies, which are proposed to have resulted from either fission or fusion. Due to the imperfect division of one fertilized ovum, conjoined twins are identical monozygotic twins that do not entirely separate from one another but are still partially linked to one another.¹ The incidence of conjoined twins is 1 in 50,000 to 100,000 births. However, because 60% of them die in the womb or shortly after birth, the actual incidence can reach 1 in 250,000 live births. The ratio of women to men babies is 3:1.²

Conjoined twins are classified based on the area of the body and internal organs that are fused: 11% cephalopagus (joined at the head), 19% thoracopagus (joined at the chest with one heart), 18% omphalopagus (lower abdomen), 11% ischiopagus (lower abdomen and thoracic system genitourinary), 28% parapagus (joined on the sides of the body and pelvis), 5% craniopagus (cranium), 2% rachipagus (vertebral column), and 6% pyopagus (sacrum).³ Based on the prognosis, conjoined twins are classified into 2, survived and non-survived. Survived conjoined twins consist of separable and non-separable twins. Cephalopagus is frequently missed as a singleton pregnancy because of the extreme degree of fusion. The type of conjoined twins, cephalothoraco-abdominopagus itself, is a scarce type of conjoined twins with a poor prognosis. Prenatal diagnosis of conjoined twins is crucial to determine the prognosis so that it can properly manage both the mother and the fetus. The tools that can be used for early detection are ultrasonography and MRI.⁴

Conjoined twins can be challenging to diagnose accurately, especially in the early stages of pregnancy. Sometimes, a diagnosis might be ambiguous, necessitating additional imaging or specialist testing. Referral to a specialized prenatal facility or consultation with a fetal medicine expert may be advised under challenging circumstances. This case report will describe a rare conjoint twin case that could be diagnosed early in pregnancy. And can be appropriately managed in early pregnancy.

CASE REPORT

¹²
A 27-year-old woman, gravida 4, para 1, abortion 2, child alive 1, was referred to the type A referral hospital

with suspicion of multiple congenital abnormalities with two hearts. The patient received antenatal checks twice at the public health care and once times at an obstetrician during pregnancy — anamnesis obtained a history of twin pregnancies from the husband's grandmother — general examination was recorded within normal limits. An obstetric examination found fundal height three fingers below the umbilical, a positive fetal heart rate was observed, and an ultrasound examination revealed multiple congenital anomalies. The patient had been taking pregnancy vitamins and folic acid since five weeks of gestation.

Ultrasound results at 17/18 weeks of gestation at Dr. Soetomo Hospital showed conjoined twins fused from head to urogenital part (one thalamus, two cerebellum, two hearts, two lungs, fetal hydrops, and spina bifida abnormalities were seen in one of the fetuses). The MRI confirmation showed a craniopagus, suspected meningomyelocele, and severe bilateral hydronephrosis in the second baby. Based on the ultrasound and MRI results, it showed a bad prognosis because it was categorized as non-separable and non-survived conjoint twins. The multidisciplinary (conjoint twin team) discussion decided to terminate the pregnancy.

In non-separable cases, if it is discovered early in pregnancy, there is a possibility of terminating the pregnancy or maintaining it until term or the patient goes into labor spontaneously; however, if the decision waits until term, there is a possible risk of having a cesarean section at the time of delivery. If the diagnosis is early, it allows for early termination so that no surgery is required and prevents stress on the mother. The patient was informed of her pregnancy's prognosis and management options. The patient and family decided to terminate it. The patient was terminated at 20 weeks of pregnancy by inducing a combination of misoprostol 200 mcg vaginally every 6 hours and inserting a balloon catheter. The fetus is born weighing 400 g and has a length of 20 cm. There were rostral conjoined twins, two heads with two faces in opposite positions, each with two eyes, one nose showing nasal proboscis, and two ears. And one mouth. The head is fused to the thoracic and lower abdomen, and an omphalocele is obtained in one fetus with one umbilicus and one placenta. Siamese twins have two pairs of arms and legs. However, the patient refused to undergo an autopsy.

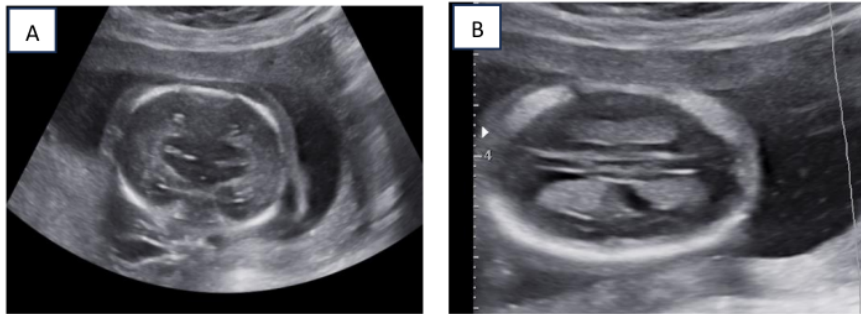


Figure 1. 2D ultrasonography results in a) Arrows indicate two choroid plexuses, b) Two fetal heads fused at the thalamus.

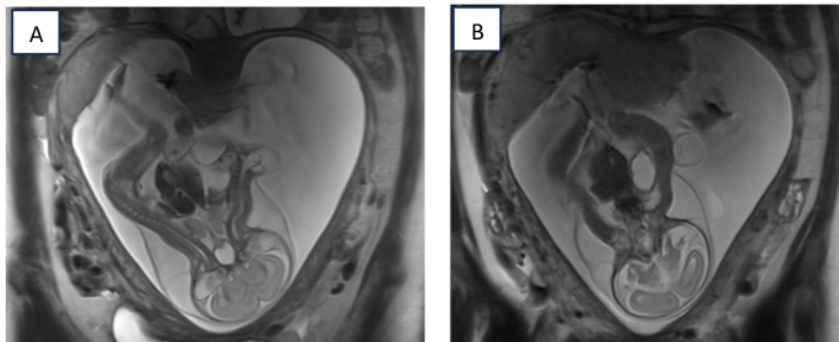


Figure 2. MRI results show two cerebellum lobes, two spines, two hearts, two lungs, and two livers. This organ fused on head to abdomen. Hydronephrosis and meningocele are also seen in this small fetus.



Figure 3. a) anterior part, b) posterior part

DISCUSSION

Conjoined twins have captivated mankind for centuries due to the rarity of this birth type; nonetheless, physicians have constantly encountered difficulties in dealing with conjoined twins.⁵ The embryological process of conjoined twins has yet to be discovered clearly. There are various theories on the formation of conjoined twins: a) Fission theory, namely division in the early stages of embryo formation that comes from the fertilization of one ovum; b) Fusion theory, which suggests that conjoined twins result from two, initially separate monozygotic embryos, which coalesce and become secondarily and homologously fused (cephalopagus, thoracopagus, omphalopagus, ischiopagus, and parapagus).³ Research on conjoined twins finds that union is homologous: head to head, buttocks to buttocks, chest to chest, back to back, sides to sides, but never head to buttocks or chest to back.⁶

¹⁴ Conjoined twins are classified based on the area of the body and the fused internal organs. The most common conjoined twins found are the thoracopagus, omphalopagus, and thoracic-omphalopagus types, with an incidence of around 56% of the total number of conjoined twins.⁷ Cephalopagus conjoined twins fused from head to umbilicus are the rarest type. This type has one cranium and two opposite faces, with one face usually rudimentary. Another finding in cases of cephalopagus can be found in the lower abdomen and pelvis, which are separated by two pairs of hands and feet.⁸

Seventy percent of conjoined twins die within twenty-four to forty-eight hours after delivery or have a lethal congenital disease caused by the untimely diagnosis, which delays the implementation of optimal surgical treatment. Thus, early diagnosis and treatment are preferred.^{9,10} Prior studies utilized ultrasonography to diagnose conjoined twins between 11 and 13 weeks of gestation.¹¹ Recent studies have documented the diagnosis of fetal abnormalities in twin pregnancies as early as 8 weeks gestation; nevertheless, precise assessment of shared anatomical components remains unattainable.⁵ Pregnancy termination remains the most effective course of action, regardless of gestational age, but especially during the early stages.

²⁷ The diagnosis of conjoined twins in early pregnancy typically relies on prenatal ultrasound imaging. Some steps involved in diagnosing conjoined twins during the early stages of pregnancy are: early ultrasound examination, identification of gestational sac and embryos, assessment of fetal anatomy, evaluation of the placenta and umbilical cord, and proper follow-up examination. The ultrasound examination enables the

identification of conjoined twins during prenatal diagnosis as early as 12 weeks of gestation. However, examination at 18-20 weeks of gestation is recommended for a more comprehensive assessment. Another modality that can be used is magnetic resonance imaging (MRI), which offers enhanced precision in providing anatomically detailed radiological images compared to ultrasound.¹²⁻¹⁴

In the present case, a prenatal ultrasound assessment is performed during the 17th to 18th weeks of pregnancy. The result showed that the cranium and the thalamus are joining, affecting the brain's structure. Furthermore, one of the fetuses exhibited the presence of an omphalocele and spina bifida. A magnetic resonance imaging (MRI) test was conducted to clarify the diagnosis further. The magnetic resonance imaging (MRI) scan reveals an image depicting two vertebrae, each fetus exhibiting distinct anatomical structures such as individual hearts, livers, and kidneys. Additionally, both fetuses exhibit the presence of a single pair of hands and feet. The tests showed that the conjoined twin fetuses, which were diagnosed as cephalo-thoraco-abdominopagus, are babies that cannot be separated and will not live.

² In general, conjoined twins have a poor prognosis. The survival rate is indeed 7.5%. Survival rates for surgically separated cases are as low as 60%.¹⁵ An improved prognosis could result from antenatal imaging, postnatal surgery, tissue expansion during surgery, and cadaveric transplantation for important organs shared by the twins, if applicable.¹⁶ Legal abortion should be contemplated in Indonesia when a fetus has a life-threatening congenital abnormality with a poor prognosis, especially cephalo-thoraco-abdominopagus twins, whose survival rate is low and unlikely to be successfully separated.¹⁷

Early diagnosis of conjoined twins during prenatal examination is critical for ascertaining the prognosis of the fetus, guiding parental counseling over appropriate courses of action, and potentially enabling the termination of the pregnancy. First-trimester ultrasonography continues to be the most effective diagnostic modality in early pregnancy. Additionally, prenatal magnetic resonance imaging can assist in tissue characterization, conjunction type identification, and the detection of embryological malformations.¹⁸ Once applicable, contemporary techniques such as 3D printing may facilitate surgical pre-planning and subsequent separation.¹³ A viable pregnancy is easier to terminate vaginally if the diagnosis is made before that time, which may lessen the risk of trauma.¹⁹ As the diagnosis progresses, the probability of achieving termination via cesarean section augments. Early pregnancy termination is considered a safer option due

to its potential to mitigate the emotional impact on the couples, which could be exacerbated by the numerous interdisciplinary follow-ups that are required throughout the prenatal and postnatal phases.²⁰ The effective management of conjoined twins necessitates the close collaboration of a multidisciplinary team.²¹

CONCLUSION

Conjoined twins of the cephalon-thoraco-abdominopagus type are a very rare type of conjoined twin with a poor prognosis. An early prenatal diagnosis provides a good outcome for the mother. Ultrasonography and MRI are complementary modalities in determining the diagnosis and prognosis of conjoined twins.

DISCLOSURES

Acknowledgement

4 Thanks to the study participant and the fetomaternal team, The Conjoint twin team of Dr. Soetomo General Academic Hospital, Surabaya, Indonesia, for their support.

Conflict of interest

21 The author report there are no competing interests to declare.

Patient consent for publication

9 The author report there are no competing interests to declare.

Funding

This research has received no external funding.

REFERENCES

1. Bindlish A, Sawal A. A Detailed Description and Discussion on Conjoined Twins. *Cureus*. 2022; 14(9):e29526. doi: [10.7759/cureus.29526](https://doi.org/10.7759/cureus.29526). PMID: 36312620; PMCID: PMC9595239.
2. Spitz L. Conjoined twins. *Prenat Diagn*. 2005;25(9):814-9. doi: [10.1002/pd.1268](https://doi.org/10.1002/pd.1268). PMID: 16170846.
3. Spencer R. Theoretical and analytical embryology of conjoined twins: part II: adjustments to union. *Clin Anat*. 2000;13(2):97-120. doi: [10.1002/\(SICI\)1098-2353\(2000\)13:2<97::AID-CA5>3.0.CO;2-I](https://doi.org/10.1002/(SICI)1098-2353(2000)13:2<97::AID-CA5>3.0.CO;2-I). PMID: 10679855.

4. Kapoor R, Bansal A, Aggarwal A, et al. Prenatal diagnosis of cephalopagus conjoined twins by ultrasonography and magnetic resonance imaging. *Journal of Fetal Medicine*. 2015;02(01):45–50. doi: [10.1007/s40556-015-0039-x](https://doi.org/10.1007/s40556-015-0039-x).
5. Liang XW, Cai YY, Yang YZ, et al. Early ultrasound diagnosis of conjoined twins at eight weeks of pregnancy: A case report. *World J Clin Cases*. 2020;8(21):5389-93. doi: [10.12998/wjcc.v8.i21.5389](https://doi.org/10.12998/wjcc.v8.i21.5389). PMID: 33269274; PMCID: PMC7674739.
6. Kaufman MH. The embryology of conjoined twins. *Childs Nerv Syst*. 2004;20(8-9):508-25. doi: [10.1007/s00381-004-0985-4](https://doi.org/10.1007/s00381-004-0985-4). Epub 2004 Jul 27. PMID: 15278382.
7. Kuroda K, Kamei Y, Kozuma S, et al. Prenatal evaluation of cephalopagus conjoined twins by means of three-dimensional ultrasound at 13 weeks of pregnancy. *Ultrasound Obstet Gynecol*. 2000; 16(3):264-6. doi: [10.1046/j.1469-0705.2000.00263.x](https://doi.org/10.1046/j.1469-0705.2000.00263.x). PMID: 11169294.
8. Singh M, Singh KP, Shaligram P. Conjoined twins cephalopagus janiceps monosymmetros: a case report. *Birth Defects Res A Clin Mol Teratol*. 2003; 67(4):268-72. doi: [10.1002/bdra.10042](https://doi.org/10.1002/bdra.10042). PMID: 12854662.
9. Burans C, Smulian JC, Rochon ML, et al. W. 3-dimensional ultrasound assisted counseling for conjoined twins. *J Genet Couns*. 2014;23(1):29-32. doi: [10.1007/s10897-013-9623-1](https://doi.org/10.1007/s10897-013-9623-1). PMID: 23797965.
10. Willobee BA, Mulder M, Perez EA, et al. Predictors of in-hospital mortality in newborn conjoined twins. *Surgery*. 2019;166(5):854-60. doi: [10.1016/j.surg.2019.06.028](https://doi.org/10.1016/j.surg.2019.06.028). Epub 2019 Aug 8. PMID: 31402130; PMCID: PMC10353765.
11. Syngelaki A, Cimpoa B, Litwinka E, et al. Diagnosis of fetal defects in twin pregnancies at routine 11-13-week ultrasound examination. *Ultrasound Obstet Gynecol*. 2020;55(4):474-81. doi: [10.1002/uog.21938](https://doi.org/10.1002/uog.21938). Epub 2020 Mar 6. PMID: 31788879.
12. Sabih D, Ahmad E, Sabih A, et al. Ultrasound diagnosis of cephalopagus conjoined twin pregnancy at 29 weeks. *Biomed Imaging Interv J*. 2010;6(4):e38. doi: [10.2349/bij.6.4.e38](https://doi.org/10.2349/bij.6.4.e38). Epub 2010 Oct 1. PMID: 21611074; PMCID: PMC3097803.
13. Mathew RP, Francis S, Basti RS, et al. Conjoined twins - role of imaging and recent advances. *J Ultrason*. 2017;17(71):259-66. doi: [10.15557/JoU.2017.0038](https://doi.org/10.15557/JoU.2017.0038). Epub 2017 Dec 29. PMID: 29375901; PMCID: PMC5769666.
14. Vagyannavar R, Bhattacharyya A, Misra G, et al. Craniopagus twins for magnetic resonance imaging. *Saudi J Anaesth*. 2017;11(4):509-10. doi: [10.4103/](https://doi.org/10.4103/)



- [sja.SJA_89_17](#). PMID: 29033747; PMCID: PMC 5637443.
15. Brizot Mde L, Liao AW, Lopes LM, et al. Gêmeos unidos: diagnóstico pré-natal, parto e desfecho após o nascimento [Conjoined twins: prenatal diagnosis, delivery and postnatal outcome]. *Rev Bras Ginecol Obstet.* 2011;33(5):211-8. Portuguese. PMID: [21860927](#).
 16. Afzal AR, Montero FJ. Conjoined Twins. 2023. In: StatPearls [Internet]. Treasure Island (FL): StatPearls Publishing; 2024 Jan-. PMID: [32809674](#).
 17. Regulation of the Government of Republic of Indonesia no. 61 year 2014 on Reproductive Health. Available from: <https://gizikia.kemkes.go.id/assets/file/pedoman/PP%20No.%2061%20Th%202014%20ttg%20Kesehatan%20Reproduksi.pdf>
 18. Mehollin-Ray AR. Prenatal and postnatal radiologic evaluation of conjoined twins. *Semin Perinatol.* 2018;42(6):369-80. doi: [10.1053/j.semperi.2018.07.015](#). Epub 2018 Jul 26. PMID: 30170825.
 19. Wataganara T, Ruangvutilert P, Sunsaneevithayakul P, et al. Three-dimensional ultrasound for prenatal assessment of conjoined twins: additional advantages? *J Perinat Med.* 2017;45(6):667-91. doi: [10.1515/jpm-2016-0381](#). PMID: 28231064.
 20. Vayna AM, Veduta A, Duta S, et al. Diagnosis of Fetal Structural Anomalies at 11 to 14 Weeks. *J Ultrasound Med.* 2018;37(8):2063-73. doi: [10.1002/jum.14561](#). Epub 2018 Feb 24. PMID: 29476550.
 21. Luton A, Estrada N, Barrientez K, et al. Nursing considerations and interdisciplinary coordination in the care of conjoined twins. *Semin Perinatol.* 2018;42(6):340-9. doi: [10.1053/j.semperi.2018.07.012](#). Epub 2018 Jul 27. PMID: 30185382.

Early diagnosis and management

ORIGINALITY REPORT

16%

SIMILARITY INDEX

10%

INTERNET SOURCES

14%

PUBLICATIONS

%

STUDENT PAPERS

PRIMARY SOURCES

1

e-journal.unair.ac.id

Internet Source

1%

2

www.ncbi.nlm.nih.gov

Internet Source

1%

3

Asma Mian, Nader Ishak Gabra, Tanuj Sharma, Nitsa Topale, Jerzy Gielecki, R. Shane Tubbs, Marios Loukas. "Conjoined twins: From conception to separation, a review", *Clinical Anatomy*, 2017

Publication

1%

4

Yuni Hisbiyah, Anang Endaryanto, Bagus Setyoboedi, Nur Rochmah, Muhammad Faizi, Katherine Fedora. "Selenium level correlates negatively with antibodies but positively with thyroid function in children with down syndrome: an Indonesian study", *Frontiers in Endocrinology*, 2023

Publication

1%

5

onlinelibrary.wiley.com

Internet Source

1%

6	www.journal-jams.org Internet Source	1 %
7	pure-accept.eur.nl Internet Source	1 %
8	aan.sagepub.com Internet Source	1 %
9	assets.researchsquare.com Internet Source	1 %
10	F Sharmin, F Begum, T Parveen, SF Khatun, W Fatima. "Thoracopagus conjoined twin - a case report", Bangladesh Journal of Medical Science, 1970 Publication	1 %
11	Xiao-Wen Liang, Yong-Yi Cai, Yao-Zhang Yang, Zhi-Yi Chen. "Early ultrasound diagnosis of conjoined twins at eight weeks of pregnancy: A case report", World Journal of Clinical Cases, 2020 Publication	1 %
12	Arif Kokcu, Mehmet B. Cetinkaya, Oguz Aydin, Migraci Tosun. "Conjoined twins: Historical perspective and report of a case", The Journal of Maternal-Fetal & Neonatal Medicine, 2009 Publication	1 %
13	Gabriele Tonni, Alessandro Ventura, Ida Vito, Daniela Piana, Maria Paola Bonasoni, Claudio	<1 %

De Felice. "Cephalothoracopagus, janiceps, disymmetros, monoomphalian conjoined twins undiagnosed until early second trimester", Archives of Gynecology and Obstetrics, 2010

Publication

14

"Fundamentals of Pediatric Neuroanesthesia", Springer Science and Business Media LLC, 2021

Publication

15

K.-H. Fang. "Ischiopagus conjoined twins at 9 weeks of gestation: three-dimensional ultrasound and power Doppler findings", Ultrasound in Obstetrics and Gynecology, 03/2005

Publication

16

doaj.org
Internet Source

<1 %

17

pubmed.ncbi.nlm.nih.gov
Internet Source

<1 %

18

www.wjgnet.com
Internet Source

<1 %

19

"Pediatric Surgery", Springer Science and Business Media LLC, 2020

Publication

20

Farhan Dardiri. "Comparison Of Naïve Bayes And Decision Trees In Determining The Best

<1 %

Manager Of Nurul Jadid Islamic Boarding
School Based On Forward Selection", Sinkron,
2024

Publication

21

Gozde Busra Eroglu. "Detection of honey bee viruses in *Vespula germanica*: Black queen cell virus and Kashmir bee virus", *Biologia*, 2023

Publication

<1 %

22

Mohamed Abdel-Latif, Mohamed Sameh Shalaby, Sameh Abd Elhay. "Chapter 50 Conjoined Twins", Springer Science and Business Media LLC, 2019

Publication

<1 %

23

Toshihiko Iura, Satoru Makinoda, Chihaya Sasakura, Natsuko Hirosaki, Hirokazu Inoue, Tomoo Waseda, Yukio Watanabe.

"Hemodynamic Analysis of Cephalothoracopagus by the Color Doppler Method", *Fetal Diagnosis and Therapy*, 2006

Publication

<1 %

24

www.scielo.br

Internet Source

<1 %

25

www.thieme-connect.com

Internet Source

<1 %

26

Leonie Baken, Melek Rousian, Erwin J. O. Kompanje, Anton H. J. Koning, Peter J. van der

<1 %

Spek, Eric A. P. Steegers, Niek Exalto.
"Diagnostic Techniques and Criteria for First-
Trimester Conjoined Twin Documentation",
Obstetrical & Gynecological Survey, 2013

Publication

27

Yang, Pei-Yin, Ching-Hua Wu, Guang-Perng
Yeh, and Charles Tsung-Che Hsieh. "Prenatal
diagnosis of parapagus diprosopus dibrachius
dipus twins with spina bifida in the first
trimester using two- and three-dimensional
ultrasound", Taiwanese Journal of Obstetrics
and Gynecology, 2015.

<1 %

Publication

28

"Atlas of Genetic Diagnosis and Counseling",
Springer Nature, 2006

<1 %

Publication

29

"Prenatal Diagnostic Testing for Genetic
Disorders", Springer Science and Business
Media LLC, 2023

<1 %

Publication

30

"Twin and Higher-order Pregnancies",
Springer Science and Business Media LLC,
2021

<1 %

Publication

31

J. L. Weiss. "False positive diagnosis of
conjoined twins in the first trimester",
Ultrasound in Obstetrics and Gynecology,
11/2002

<1 %

32

Tuangsit Wataganara, Pornpimol Ruangvutilert, Prasert Sunsaneevithayakul, Kusol Russameecharoen et al. "Three-dimensional ultrasound for prenatal assessment of conjoined twins: additional advantages?", Journal of Perinatal Medicine, 2017

<1 %

Publication

Exclude quotes On

Exclude matches Off

Exclude bibliography On

Early diagnosis and management

GRADEMARK REPORT

FINAL GRADE

GENERAL COMMENTS

/100

PAGE 1

PAGE 2

PAGE 3

PAGE 4

PAGE 5

PAGE 6
