

Diastolic dysfunction and atrial fibrillation

by Yan Efrata Sembiring

Submission date: 08-May-2024 04:44PM (UTC+0800)

Submission ID: 2374084999

File name: Diastolic_dysfunction_and_atrial_fibrillation.pdf (3.2M)

Word count: 6077

Character count: 35946



ELSEVIER

18

Contents lists available at ScienceDirect

International Journal of Surgery Open

journal homepage: www.elsevier.com/locate/ijso

Review Article

Diastolic dysfunction and atrial fibrillation in coronary heart disease surgery: A literature review

Lyndon Darwin^a, Yan Efrata Sembiring^{a,*}, Achmad Lefi^b^a Department of Thoracic, Cardiac, and Vascular Surgery, Faculty of Medicine, Universitas Airlangga – Dr. Soetomo General Academic Hospital, Surabaya, Indonesia^b Department of Cardiology and Vascular Medicine, Faculty of Medicine, Universitas Airlangga – Dr. Soetomo General Academic Hospital, Surabaya, Indonesia

ARTICLE INFO

Keywords:

Atrial fibrillation
Coronary heart disease
Diastolic dysfunction

ABSTRACT

Diastolic dysfunction can cause atrial fibrillation through the following mechanisms: increased atrial afterload, atrial stretch, and atrial wall pressure due to dilatation. Diastolic dysfunction is often overlooked in coronary heart disease than systolic (left ventricular) function, even though diastolic dysfunction can also result in significant morbidity and mortality. Diastolic dysfunction is an independent predictor of atrial fibrillation. Diastolic dysfunction enlarges the left atrium, stretches the insertion site for pulmonary veins, and initiates atrial fibrillation. Atrial remodelling in atrial fibrillation and diastolic dysfunction progresses from metabolic changes (phosphorylation) to gene expression changes (calcium channel downregulation) to hibernation (myolysis, de-differentiation) and culminates in irreversible changes (fatty changes).

1. Introduction

Coronary heart disease is the leading cause of cardiovascular death. According to CDC data, coronary heart disease caused 360,900 deaths in 2019. Two out of 10 coronary heart disease deaths occur in adults under 65 years old [1]. In addition to optimizing medical therapy, revascularization is essential to managing coronary heart disease. Coronary artery bypass surgery (CABG) still serves as the primary method of revascularization, particularly in patients with multi-vessel disease or left primary disease [2]. Atrial fibrillation is a relatively common complication of CABG. Mathew et al. reported that the incidence of atrial fibrillation after CABG was 27% [3]. Post-operative atrial fibrillation will increase mortality and morbidity, including length of intensive care and hospitalization, hemodynamic disorders, and the risk of congestive heart failure, renal insufficiency, neurological events, stroke and even death [3,4].

Diastolic dysfunction refers to an abnormality of mechanical function during diastole. Diastole happens when the myocardium loses its ability to generate power and shortens and returns to its relaxed length. Diastolic dysfunction occurs when the process is prolonged, slowed, and incomplete [5]. Diastolic dysfunction causes several mechanisms that can support the occurrence of atrial fibrillation. These mechanisms include increased atrial afterload, atrial stretch, and atrial wall pressure

due to dilatation [6]. In coronary heart disease, diastolic dysfunction is often less noticeable than systolic (left ventricular) function, even though diastolic dysfunction also results in significant morbidity and mortality [5].

1.1. Collecting data

We collect our references using the preferred reporting items for systematic reviews and meta-analyses (PRISMA) statement [7,8]. In addition, we also use a measurement tool to assess systematic reviews (AMSTAR 2) to analyze the results of our review [9].

1.2. Diastolic dysfunction

Conceptually, diastole is when the myocardium loses its ability to generate force, shortens, and returns to its relaxed length and force. Diastolic dysfunction occurs when the process is prolonged, slowed, or incomplete [5]. Left ventricular diastolic function abnormalities can be found in most patients with coronary heart disease. This abnormality occurs in decreased left ventricular filling and increased time-to-peak filling rates. This phenomenon is a clinical reflection of ischemia affecting the rate of diastolic relaxation of the papillary muscle, related to the fact that relaxation of the myocardium during early diastole is an

* Corresponding author. Department of Thoracic, Cardiac, and Vascular Surgery, Faculty of Medicine, Universitas Airlangga – Dr. Soetomo General Academic Hospital, Jl. Mayjend Prof. Dr. Moestopo No. 6-8, Airlangga, Gubeng, Surabaya, East Java, 60286, Indonesia.

E-mail addresses: yan.sembiring.1022@gmail.com, yan-e-s@fk.unair.ac.id (Y.E. Sembiring).

<https://doi.org/10.1016/j.ijso.2023.100615>

Received 1 November 2022; Received in revised form 7 April 2023; Accepted 30 April 2023

Available online 5 May 2023

2405-8572/© 2023 The Author(s). Published by Elsevier Ltd on behalf of Surgical Associates Ltd. This is an open access article under the CC BY-NC-ND license (<http://creativecommons.org/licenses/by-nc-nd/4.0/>).

active and energy-dependent process. Abnormalities of diastolic function in patients with coronary heart disease also reflect a lack of increased coronary flow during diastole [10,11].

2. Measurement of diastolic function

2.1. Relaxation

Diastole includes the period in which the myocardium loses its ability to generate force, shortens, and then returns to strength and rest length. Relaxation occurs in a series of energy-consuming steps, starting with the release of calcium from troponin C, the release of actin-myosin cross bridges, phosphorylation of phospholamban, sarcoplasmic reticulum calcium ATPase-induced absorption of calcium into the sarcoplasmic reticulum, sodium/calcium exchanger-induced extrusion of calcium from the cytoplasm, slows the rate of the cross-bridge cycle, and the elongation of the sarcomere to its resting length. This process requires an adequate supply of energy and mechanisms to regenerate at an adequate rate. The degree and extent to which these cellular processes occur determine the degree and extent of active ventricular relaxation. This process decreases left ventricular pressure at the ventricular level at constant volume (isovolumic relaxation). It then fills the left ventricular space with variable left ventricular pressure (auxotonic relaxation). Measurements taken during auxotonic relaxation are affected by both active relaxation and passive stiffness [5,12].

Isovolumic relaxation can be measured by measuring left ventricular pressure with a high-fidelity micromanometer catheter and calculating the instantaneous peak left ventricular pressure drop rate, peak $(-)$ dP/dt , and isovolumic left ventricular pressure drop time constant, τ . When the natural log of LV diastolic pressure is plotted against time, it equals the inverse slope of this linear relationship. The time required for the LV pressure to fall to approximately two-thirds of its initial value is expressed in more conceptual terms. When the isovolumic pressure drop is slowed down, τ is extended, and the numerical value of τ increases. Echocardiographic techniques can make a noninvasive estimate of the total isovolumic relaxation time. No relaxation index (isovolumic or auxotonic) can be considered an "intrinsic" relaxation level index unless the loading conditions (and other modulators) are held constant or at least specified. One practical way to overcome this limitation is to examine the relaxation index over the load range. Afterload can be altered acutely by mechanical or pharmacological methods. Abnormal

relaxation is indicated by a shift in the position of the relaxation-versus-afterload relationship, where relaxation is slowed at each equivalent systolic pressure (Fig. 1) [12].

On the other hand, active relaxation, in the strictest sense, is an early diastolic event, the time of onset of this process depends, at least in part, on a systolic event such as the duration of contraction. In contrast, the timing of the onset of relaxation may modify the systolic event. Therefore, the rate and degree of relaxation, in addition to being dependent on ventricular load, also depend on the duration of systole, the onset of relaxation, and the time during systole during which the load is changed. Suppose the onset of relaxation is delayed (e.g., with an increase in load early in systole). In that case, this can prolong the systole's duration, increase the heart's work during systole, and prolong relaxation. Conversely, if the onset of relaxation occurs earlier (e.g., due to increased load at the end of systole), this may shorten the systole's duration and relaxation. Thus, complex interactions between events traditionally thought to occur during systole may influence the measurement and interpretation of active relaxation. The diastole's auxotonic left ventricular filling phase can be characterized by Doppler echocardiography or radionuclide, conductance, or MRI techniques. Although each technique has advantages and disadvantages, all assess diastolic function by measuring the transient volume index during ventricular filling. However, like all relaxation indices, the auxotonic index must be interpreted based on simultaneous load changes, both afterload and loading (load present during loading). For example, the precise pattern of early and late diastolic transmission flow rates will depend on factors regulating atrial and LV pressures before and after mitral valve opening and the resultant atrial-ventricular pressure gradient (filling load). Thus, it is unsurprising that interventions or pathological conditions that increase left atrial pressure increase the initial transmission flow rate. In contrast, interventions that reduce left atrial pressure reduce the initial filling rate. In order to correctly interpret changes in the transmission flow rate, changes in the loading load must be considered. Additional indices that may be less sensitive and may indicate changes in load are currently being investigated. These include pulmonary venous flow rate, transmission propagation velocity, and tissue Doppler velocity (Fig. 2) [5].

2.2. Myocardial stiffness

In addition to active relaxation, passive viscoelastic properties

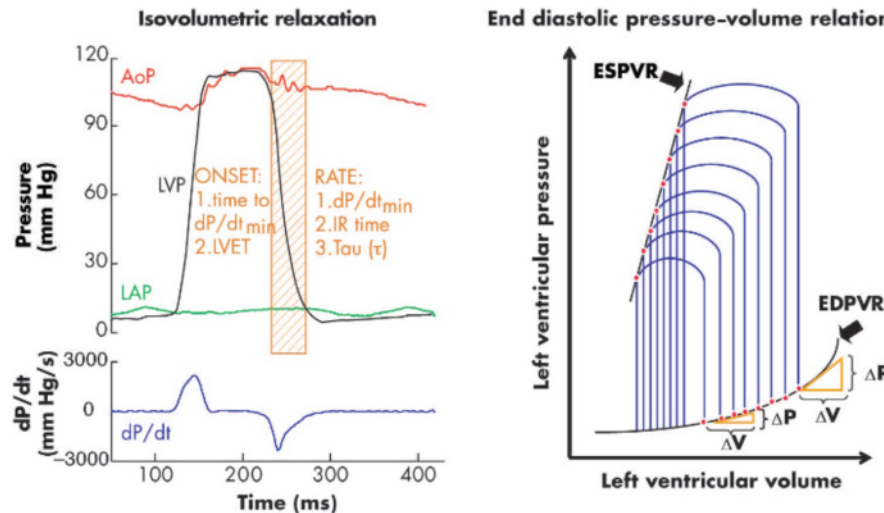


Fig. 1. Hemodynamic evaluation of diastolic function [12].

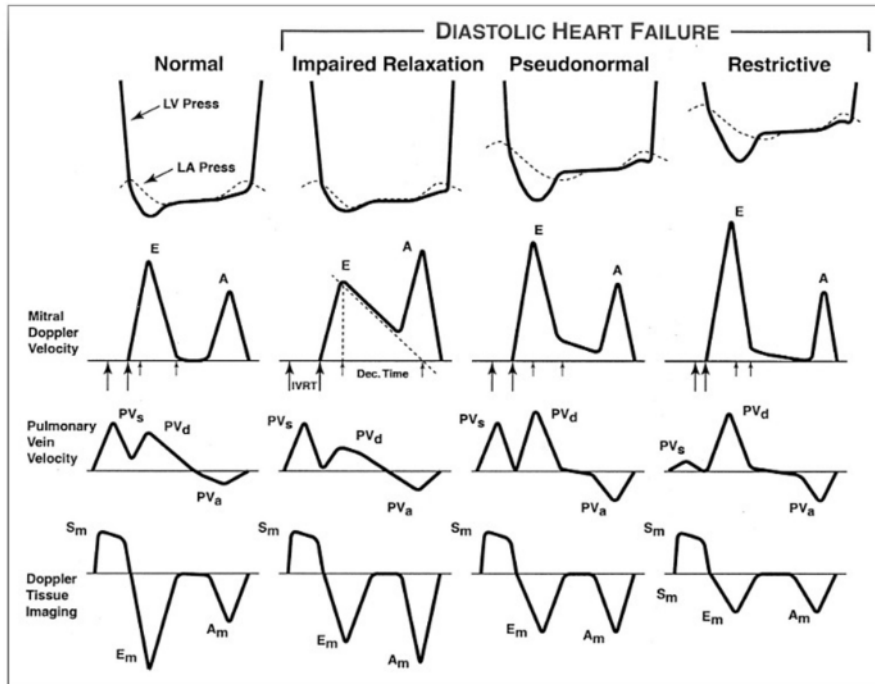


Fig. 2. Degree of diastolic dysfunction [5].

contribute to the processes that return the myocardium to its strength and length of rest. This passive viscoelastic property depends on the intracellular and extracellular structures. Changes in ventricular chamber stiffness can be assessed by examining the pressure-volume relationship during diastole. Space stiffness is determined by the myocardial stiffness of its constituents and the LV mass and LV mass/volume ratio. Changes in myocardial stiffness can be assessed by examining myocardial stress, strain, and strain rate relationships during diastole [5].

Space stiffness can be measured by examining the relationship between diastolic pressure and volume. The operating stiffness at any point along a given pressure-volume curve is equal to the slope of the tangent drawn to the curve at that point ($\Delta P/\Delta V$) (Fig. 3). The operational stiffness changes during filling; stiffness is lower at smaller volumes and higher at larger volumes (volume-dependent changes in pressure and diastolic stiffness). Since the relationship between diastolic volume pressure is curvilinear and generally exponential, the relationship between $P/\Delta V$ and pressure is linear; The slope (K_c) is called the space stiffness modulus (or space stiffness constant) and can be used as a single numerical value to measure the space stiffness. As the overall space stiffness increases, the pressure-volume curve shifts to the left, the slope of the $P/\Delta V$ -versus-pressure relationship becomes steeper, and K_c increases (volume-independent changes in pressure and diastolic stiffness). Thus, the diastolic pressure can be changed by a volume change depending on the operating stiffness or by a volume change independent of the chamber stiffness [5].

Cardiac muscle behaves as a viscoelastic material, developing a resisting force (stress, σ) as the myocardial length (strain, ϵ) increases with ventricular filling. A strain is a deformation (increase in length) of a muscle produced by applying a force (increase in stress). Myocardial stiffness can be measured by examining the relationship between stress and myocardial tension during diastole. Myocardial stiffness equals the slope ($d\sigma/d\epsilon$) of the tangent drawn to the strain-strain relationship at a given strain. Since the stress-strain relationship is curvilinear and exponential, the relationship between d/d and stress is linear, and the

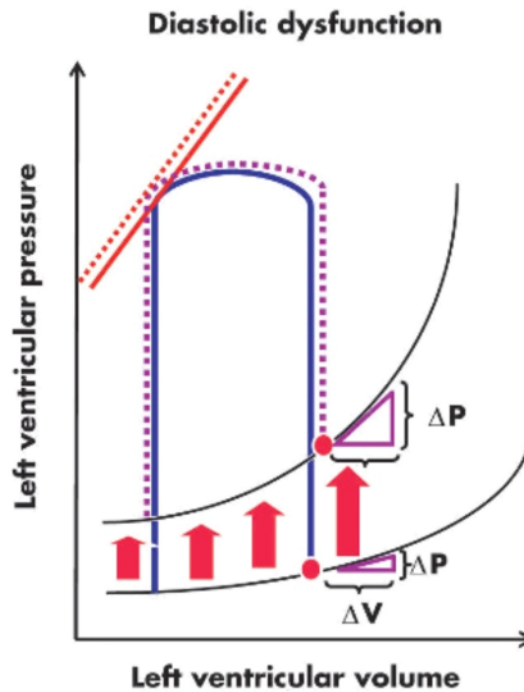


Fig. 3. Volume relationship curves and left ventricular pressure [12].

slope of this relationship, K_m , is the myocardial stiffness modulus (or myocardial stiffness constant). As myocardial stiffness increases, the stress-strain relationship shifts to the left so that for any given change in myocardial length (strain), there is a more significant increase in the force (wall stress) that develops to resist this deformation. In addition, the slope of the $d\sigma/d\varepsilon$ -versus-stress relationship becomes steeper, and K_m increases as myocardial stiffness increases [5].

Based on diastolic parameters, diastolic dysfunction is divided into 3 grades, namely grades 0 to 4. Grade 0: normal left ventricular (LV) filling pressure; mitral E/A ratio 0.75–1.5; mitral deceleration time 160–240 ms, $e' \geq 8$, $E/e' < 8$, pulmonary vein systolic forward flow rate $>$ diastolic, pulmonary vein atrial reversal duration shorter than mitral A flow duration and left atrial volume index (LAVI) < 34 mL/m². Grade 1: LV filling pressure is normal to slightly elevated or left ventricular relaxation is impaired; mitral E/A ratio < 0.75 , mitral deceleration time > 240 ms, $e' < 8$, $E/e' \geq 8$, pulmonary vein systolic forward flow rate \geq diastolic, pulmonary vein atrial reversal duration shorter than mitral A flow duration, and LAVI 34 mL/m². Grade 2: moderately elevated LV filling pressure or pseudonormal left ventricular diastolic filling; Mitral E/A 0.75–1.5 with a decrease of 0.5 with Valsalva manoeuvre, mitral deceleration time 160–240 ms, $e' < 8$, $E/e' 9-12$, pulmonary vein systolic forward flow rate $<$ diastolic, the duration of pulmonary venous atrial reversal was longer than the duration of mitral A flow (≥ 30 ms), and LAVI was 34 mL/m². Grade 3: severe increase in LV filling pressure or restriction of LV diastolic filling; Mitral E/A > 1.5 with a decrease of 0.5 (reversible) or < 0.5 (fixed) with Valsalva manoeuvre, mitral deceleration time < 160 ms, $e' < 8$, E/e' vein systolic forward flow rate pulmonary $<$ diastolic, pulmonary vein atrial reversal duration longer than mitral A flow duration (≥ 30 ms), and LAVI 34 mL/m² [13].

2.3. Coronary artery bypass surgery with cardiopulmonary machine (on pump CABG)

Coronary artery bypass surgery is a form of surgical myocardial revascularization. This action can be conducted with or without a cardiopulmonary machine [14]. In some studies, the advantage of coronary artery bypass surgery with a cardiopulmonary machine is complete revascularization [15,16]. Coronary artery bypass surgery without a cardiopulmonary machine tends to have a higher incidence of repeat revascularization. In addition, coronary artery bypass surgery with a cardiopulmonary machine is preferred over the alternative in emergencies. In some studies, it is also said that mild hypothermia in coronary artery bypass surgery with cardiopulmonary machines is said to be beneficial for cerebral protection so that it can avoid neurophysiological deficits. Another advantage is the familiarity with the technique, related to the coronary artery bypass technique without a cardiopulmonary machine which requires a relative learning curve [14,17].

Disadvantages of coronary heart bypass surgery with cardiopulmonary machines include the impact of inflammation, the risk of kidney dysfunction, and gastrointestinal stress [17]. Exposure to extracorporeal circulation/cardiopulmonary machinery triggers activation of the complement cascade, activation of neutrophils, and release of endotoxins from the mucosal surface, and changes in perfusion may result in ischemia-reperfusion injury. The other impact is the production of oxygen free radicals, cytokines, platelet activation, and inflammatory mediators [18].

2.4. Pathophysiology of coronary artery bypass surgery with cardiopulmonary machine

When the heart is stopped, the cardiopulmonary machine maintains circulation. The cardiopulmonary machine can cause complications in organs such as the heart, lungs, kidneys, and brain. Mechanisms that contribute to this include a contact of the plasma and the surface of the cannula, shear force between the plasma and the cardiopulmonary machine, hypothermia, and ischemia-reperfusion injury [19]. The

pathophysiology of the cardiopulmonary machine occurs through two activation mechanisms: material-dependent and non-material activation. Material-related activation is initiated by blood contact in the cardiopulmonary machine circuit. The contact is related to the humoral defence system. Activation of the humoral defence system will activate the kallikrein, fibrinolytic, and coagulation systems. Activation of these products, either directly or indirectly, will activate leukocytes, platelets, and endothelium. Activation of the complement system also occurs due to blood contact with foreign materials. Complement activation specifically complements C3a, C5a, and TCC (terminal complement complex). The impact of this complement activation will damage the cell membrane [20].

Complement formation also plays an essential role in leukocyte recruitment, upregulation of neutrophil activation markers, and cytokine production. The literature states that the incidence and degree of impaired cardiac, pulmonary, and renal function after cardiopulmonary machinery is related to the plasma concentration of complement fragment 3a. Furthermore, inhibition of TCC production by protease inhibitors was also associated with a significant reduction in the detrimental effect of ischemia-reperfusion on the myocardium after cardiopulmonary machinery [21].

Myocardial edema is one of the effects of coronary artery bypass surgery. This edema can be detrimental because it can affect the systolic and diastolic function of the heart. Cardioplegic fluid is a hypoosmotic solution and supports myocardial edema. Lymphatic drainage is reduced when the heart is stopped and contributes to myocardial edema [22]. When the cardiopulmonary machine runs, the heart stops in the diastolic phase. This includes impaired contraction, increased transmicrovascular fluid flow, activation of cellular and humoral mediators, and increased microvascular permeability [14,19].

Ischemia-reperfusion injury is one of the consequences of coronary artery bypass surgery, specifically CABG with a cardiopulmonary machine. Ischemia-reperfusion injury results from temporary occlusion of a coronary artery. Circulatory flow returns with a greater quantity of blood compared to coronary flow before surgery. Mechanisms that could explain ischemia-reperfusion injury are apoptosis due to the accumulation of free radicals through anaerobic metabolism during ischemia and intracellular calcium ion overload. This ischemia-reperfusion injury may manifest as arrhythmias, stunning, low cardiac output, and perioperative myocardial infarction [23].

Electrolyte fluctuations, especially sodium, are also from coronary artery bypass surgery. These fluctuations may occur through antidiuretic hormone-return mechanisms, volume dilution due to surgical field suctioning, hypothermia, and pH offset. Fluctuations in sodium > 5 meq/L can lead to complications, including arrhythmias. Fluctuations > 12 meq/L were associated with impaired mortality in the ICU, whereas fluctuations > 15 meq/L were associated with post-operative seizures [24]. Cardiopulmonary machines or extracorporeal circulation use in coronary artery bypass surgery also has various effects that can occur in various body organs (Table 1) [25].

2.5. Atrial fibrillation

Atrial fibrillation is a supraventricular tachyarrhythmia with uncoordinated atrial electrical activation and ineffective atrial contraction. Characteristics of the electrocardiogram (ECG) of atrial fibrillation include irregularly irregular R-R intervals (when atrioventricular conduction is not impaired), absence of marked P waves, and irregular atrial activation. Atrial fibrillation was classified into several categories based on the presentation, duration, and spontaneous termination of spontaneous episodes (Table 2). Based on the clinical type, atrial fibrillation can be classified into AF secondary to structural cardiac disease, focal AF, polygenic AF, post-operative AF, AF in mitral stenosis or prosthetic heart valves, AF in athletes, monogenic AF (Table 3) [26]. In surgery, it is often known as post-operative atrial fibrillation (POAF). The risk factors for post-operative atrial fibrillation by time are preoperative,

Table 1
The impact of the cardiopulmonary machine on the Body's organs.

Organ	Impact
Blood	Decreased platelet count and decreased blood clotting factors.
Brain	Depending on the perfusion pressure and blood pressure, no disturbance occurs when the pressure is maintained sufficiently. Post-operative psychic or neurologic changes are often associated with emboli by fibrin, air, antifoam, or endogenous fragments. Brain edema due to fluid accumulation in the intracellular space can be treated by water sequestration (diuretics, corticosteroids). Hydrops of astrocyte cells or myelin edema indicates fatal conditions.
Lungs	Decreased lung function due to decreased volume and inadequate ventilation. Post-perfusion syndrome may occur in the form of pulmonary edema, pulmonary interstitial hemorrhage, atelectasis, or hemothorax. This can lead to left atrial overdistention leading to pulmonary hypertension and is often fatal. ³⁶
Kidney	Depression of glomerular filtration rate and renal plasma flow by up to 50%, which usually returns to an average of 1 h after completion of extracorporeal circulation. Administration of diuretics or intraoperative hemodialysis may be considered. No spontaneous return of renal function indicates renal insufficiency. It also depends on the preoperative evaluation of the patient's renal function. Mannitol, which reduces post-glomerular renal vascular resistance, prevents a decrease in renal plasma flows during perfusion without affecting the glomerular filtration rate.
Heart/myocardium	To prevent left ventricular distension due to the accumulation of blood, it is advisable to install a "vent" in the left ventricle in the old procedures. Myocardial distention can cause sl-myocardial/myocyte edema. Complications that often occur in the myocardium are side effects of cooling or drugs due to the formation and accumulation of lactic acid in the myocardium, loss of blood glycogen and ATP and a decrease in blood pH.

Table 2
Atrial fibrillation classification.

Atrial fibrillation pattern	Definition
First diagnosed/new onset	Previously undiagnosed AF, regardless of duration or presence/severity of AF-related symptoms.
Paroxysmal	AF that ends spontaneously or with intervention within 7 days of onset.
Persistent	AF that persists for more than 7 days, including episodes ending in cardioversion (drug or electrical cardioversion) after 7 days.
Long persistent	Continuous AF of >12 months when deciding to adopt a rhythm control strategy.
Permanent	AF is acceptable to both patient and physician, and no further attempts to restore/maintain sinus rhythm will be made. Permanent AF represents the therapeutic attitude of the patient and physician rather than the pathophysiological attribute inherent in AF. The term should not be used in a rhythm control strategy with antiarrhythmic drug therapy or AF ablation. If a rhythm control strategy is adopted, the arrhythmia will be reclassified as 'long persistent AF'.

intraoperative, and post-operative (Fig. 4) [27].

2.6. Atrial fibrillation pathophysiology

Risk factors that can cause atrial fibrillation include sex (male), aging, ethnicity (non-Caucasian), genetics, hypertension, diabetes, chronic kidney disease, inflammation, chronic obstructive pulmonary disease, heart valve disease, heart failure, heart disease, coronary disease, acute surgical disease, alcohol consumption, obesity, smoking [26, 28]. Various factors cause complex atrial changes, including stretch-induced fibrosis, hypocontractility, fat infiltration, inflammation, vascular remodelling, ischemia, ion channel dysfunction, and calcium instability. All increase ectopy and conduction disturbances, increase the atrial propensity to develop/maintain AF, and facilitate

Table 3
Clinical type of atrial fibrillation.

AF Type	Clinical Presentation	Pathophysiology Possibilities
Secondary AF to structural heart disease	³⁰ AF in patients with left ventricular systolic or diastolic dysfunction, longstanding hypertension with left ventricular hypertrophy, and/or structural heart disease. The onset of AF in these patients is frequent enough to lead to hospitalization and is a poor predictor of outcome.	Increased atrial pressure and remodelling of atrial fibrillation with activation of the sympathetic and renin-angiotensin systems. ¹⁷
Focal AF	Patients with recurrent and frequent paroxysmal AF. Often symptomatic, young patients with marked atrial waves (rough AF), atrial ectopy, and/or atrial tachycardia in AF.	In most cases originating in the pulmonary veins, local triggers initiate AF. AF due to one or more re-entrant thrusters is also considered part of this type of AF.
Polygenic AF ²⁴	AF in carriers of specific gene variants associated with early-onset AF.	Currently under research. The presence of specific gene variants can also affect the outcome of treatment.
Post-surgery AF	New-onset AF (usually self-limiting) after major cardiac surgery in patients with previous sinus rhythm and no history of AF.	Acute factors: inflammation, oxidative stress, high sympathetic tone, electrolyte changes, and volume overload, possible interactions with pre-existing substrates.
AF in patients with mitral stenosis or heart valve prosthesis	⁴⁷ AF in patients with mitral stenosis, after mitral valve surgery and, in some cases, other heart valves.	Left atrial pressure and volume loading are the main drivers of atrial enlargement and atrial remodelling in these patients.
AF in athlete	Usually paroxysmal, related to the duration and intensity of exercise	Increased vagal tone and atrial volume
Monogenic AF	AF in patients with hereditary cardiomyopathy, including channelopathies	Arrhythmogenic mechanisms responsible for sudden death may contribute to these patients.

AF-associated hypercoagulable states. Hypocontractility reduces local endothelial shear stress, which increases the expression of plasminogen activator inhibitors, and ischemia-induced inflammation increases the expression of endothelial adhesion molecules or promotes endothelial cell release, resulting in exposure of tissue factors to the bloodstream. AF itself exacerbates many of these mechanisms, which may explain its progressive nature (Fig. 5) [26,29].

2.7. Atrial fibrillation (AF) diagnosis

The clinical presentation of atrial fibrillation can vary from asymptomatic to symptomatic. Complaints include palpitations, shortness of breath, fatigue, tension or chest pain, dizziness, fainting, and sleep disturbances. Hemodynamically, patients can be categorized with atrial fibrillation, hemodynamically stable or unstable. The diagnosis of atrial fibrillation requires documentation of the rhythm with an electrocardiogram (ECG). An episode lasting more than 30 s is a diagnosis of AF [30,31].

2.8. Management

⁵¹ In simple terms, the management of atrial fibrillation is called the ABC holistic pathway or Atrial fibrillation Better Care (ABC). A is anticoagulation/avoid stroke, B is better symptom control, and C is cardiovascular risk factors and concomitant disease: detection and

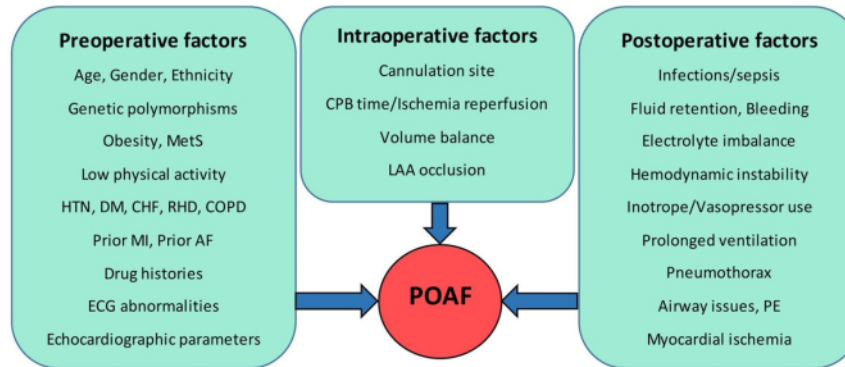


Fig. 4. Risk factors for post-operative atrial fibrillation [35].

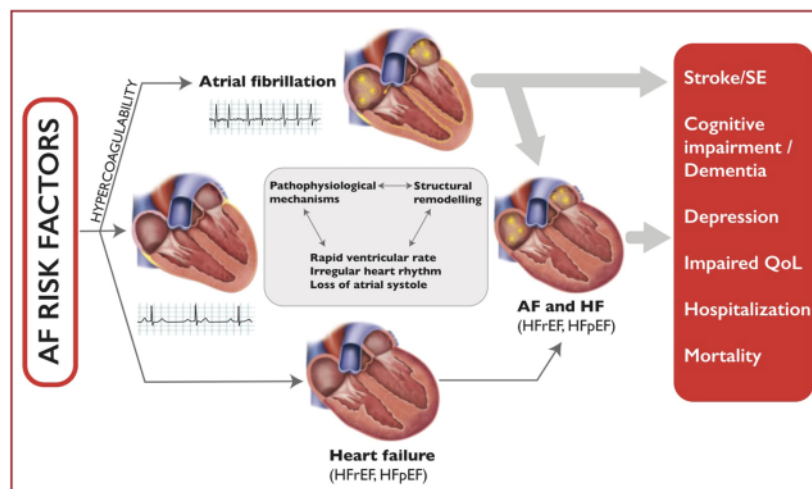


Fig. 5. Atrial fibrillation (AF) pathophysiology [26].

management. The principles of anticoagulation management and stroke avoidance are achieved by assessing stroke risk by scoring, bleeding risk assessment, and stroke prevention therapy. The principle of management of both atrial fibrillation or B (better symptom control) is achieved by rate control either medically with beta-blockers, non-dihydropyridine calcium channel blockers, digoxin, amiodarone, node ablation atrioventricular, rhythm control, cardioversion (electrical or pharmacological), catheter ablation, to surgery. The third management principle is C or cardiovascular risk factors and concomitant disease: detection and management are achieved by controlling risk factors such as lifestyle modifications such as weight reduction, use of caffeine, alcohol, physical activity, and management of specific diseases or comorbidities such as heart failure, heart disease, coronary, diabetes mellitus [26,32].

2.9. Diastolic dysfunction and atrial fibrillation

From a ventricular perspective, diastolic dysfunction includes 3 fundamental problems that occur during ventricular diastole, including impaired ventricular relaxation, decreased ventricular compliance, and increased atrial filling pressures. Although longitudinal studies showing progression through the various phases of diastolic function have been limited, one study did show that individuals who demonstrated worsening diastolic dysfunction in follow-up studies had an increased risk of

death. A classification scheme based on the echocardiographic pattern observed in patients with diastolic dysfunction has been developed. It includes class I (relaxation disorder), class II (pseudonormalization), class III (restrictive filling, reversible), and class IV (irreversible restrictive filling pattern; Fig. 1) [12].

Among the earliest changes in diastolic function are impaired relaxation, which can be caused by abnormal active relaxation, such as from impaired calcium handling and contractile fiber cycle, or abnormal passive recoil due to poor ventricular systolic or deficient structural proteins, such as titin. However, if ventricular relaxation is impaired, less ventricular filling occurs in early diastole, causing more ventricular filling later due to atrial contraction (hence, more giant emitting E and A waves). The impact of these changes on atrial function is less predictable, although based on PV velocity studies, it appears that the atria face a situation of increased preload (pretrial volume) and possibly increased atrial ejection fraction. Under these circumstances, the work performed by the atria increases, which in theory, increases the energy requirements of atrial myocytes and could have significant consequences for future remodelling. One issue of interest is whether this is considered normal in elderly patients, where a peak E/A ratio of <1 is typical, or whether relaxation disorders are part of natural cardiac aging and a significant risk factor for the development of AF [6].

Diastolic dysfunction is an independent predictor of atrial fibrillation

[33]. Diastolic dysfunction enlarges the left atrium, stretches the insertion site for the pulmonary veins, and initiates atrial fibrillation [34]. Atrial remodelling in atrial fibrillation and diastolic dysfunction progresses from metabolic changes (phosphorylation) to gene expression changes (calcium channel downregulation) to hibernation (myolysis, de-differentiation) and culminates in irreversible changes (fibrosis, fatty changes) [30].

20

Provenance and peer review

Not commissioned, externally peer-reviewed.

Sources of funding

None.

Ethical approval

None.

Consent

None.

1

Author contribution

All authors contributed toward data analysis, drafting and revising the paper, gave final approval of the version to be published and agree to be accountable for all aspects of the work.

Registration of research studies

Not applicable.

Guarantor

Yan Efrata Sembiring.

12

Declaration of competing interest

The authors declare that they have no conflict of interest.

Acknowledgement

We would like to thank our editor, "Fis Citra Ariyanto".

References

- [1] Sanchis-Gomar F, Perez-Quilis C, Leischik R, Lucia A. Epidemiology of coronary heart disease and acute coronary syndrome. *Ann Transl Med* 2016;4(13):256. <https://doi.org/10.21037/atm.2016.06.33>.
- [2] Spadaccio C, Benedetto U. Coronary artery bypass grafting (CABG) vs. percutaneous coronary intervention (PCI) in the treatment of multivessel coronary disease: quo vadis? - a review of the evidences on coronary artery disease. *Ann Cardiothorac Surg* 2018;7(4):506-15. <https://doi.org/10.21037/acs.2018.05.17>.
- [3] Mathew JP, Parks R, Savino JS, Friedman AS, Koch C, Mangano DT, et al. Atrial fibrillation following coronary artery bypass graft surgery: predictors, outcomes, and resource utilization. *MultiCenter Study of Perioperative Ischemia Research Group. JAMA* 1996;276(4):300-6.
- [4] Megens MR, Churilov L, Thijs V. New-onset atrial fibrillation after coronary artery bypass graft and long-term risk of stroke: a meta-analysis. *J Am Heart Assoc* 2017;6(12):e007558. <https://doi.org/10.1161/JAHA.117.007558>.
- [5] Zile MR, Brutsaert DL. New Concepts in Diastolic Dysfunction and Diastolic Heart Failure: Part I. 11105; 2002. p. 1387-93. <https://doi.org/10.1161/hci.102.105289>.
- [6] Rosenberg MA, Manning WJ. Diastolic dysfunction and risk of atrial fibrillation: a mechanistic appraisal. *Circulation* 2012;126(19):2353-62. <https://doi.org/10.1161/circulationaha.112.113233>.
- [7] Page MJ, McKenzie JE, Bossuyt PM, Boutron I, Hoffmann TC, Mulrow CD, et al. The PRISMA 2020 statement: an updated guideline for reporting systematic reviews. *Int J Surg* 2021;88:105906. <https://doi.org/10.1016/j.ijsu.2021.105906>.
- [8] Page MJ, McKenzie JE, Bossuyt PM, Boutron I, Hoffmann TC, Mulrow CD, et al. The PRISMA 2020 statement: an updated guideline for reporting systematic reviews. *BMJ* 2021;372:n71. <https://doi.org/10.1136/bmj.n71>.
- [9] Shea BJ, Reeves BC, Wells G, Thuku M, Hamel C, Moran J, et al. Amstar 2: a critical appraisal tool for systematic reviews that include randomised or non-randomised studies of healthcare interventions, or both. *BMJ* 2017;358:j4008. <https://doi.org/10.1136/bmj.j4008>.
- [10] Doenst T, Bargenda S, Kirov H, Moschovas A, Tkebuchava S, Safarov R, et al. Cardiac surgery 2018 reviewed. *Clin Res Cardiol : off J German Cardiac Soc* 2019;108(9):974-89. <https://doi.org/10.1007/s00392-019-01470-6>.
- [11] de Waard D, Fagan A, Minnaar C, Horne D. Management of patients after coronary artery bypass grafting surgery: a guide for primary care practitioners. *CMAJ (Can Med Assoc J) : Canadian Medical Association journal = journal de l'Association medicale canadienne* 2021;193(19). <https://doi.org/10.1503/cmaj.191108>. E689-e94.
- [12] Leite-Moreira AF. Current perspectives in diastolic dysfunction and diastolic heart failure. *Heart* 2006;92(5):712-8. <https://doi.org/10.1136/hrt.2005.062950>.
- [13] Nagueh SF, Smiseth OA, Appleton CP, Byrd 3rd BF, Dokainish H, Edvardsen T, et al. Recommendations for the evaluation of left ventricular diastolic function by echocardiography: an update from the American society of echocardiography and the European association of cardiovascular imaging. *J Am Soc Echocardiogr : off Publ Am Soc Echocardiogr* 2016;29(4):277-314. <https://doi.org/10.1016/j.echo.2016.01.011>.
- [14] Darwin L, Pribadi ORS. Successful aortic root enlargement procedure in low resource setting: two rare cases. *Int J Surg Case Rep* 2022;96:107294. <https://doi.org/10.1016/j.ijscr.2022.107294>.
- [15] Thakur U, Nerlekar N, Muthalaly RG, Comella A, Wong NC, Cameron JD, et al. Off-pump Coronary Artery Bypass Grafting Long-Term Survival is Driven by Incompleteness of Revascularisation. *Heart, lung & circulation* 2020;29(1):149-55. <https://doi.org/10.1016/j.hlc.2018.11.019>.
- [16] Suwanto D, Dewi IP, Budiarto M. Managing tricuspid valve pathology in multiple valvular heart disease. *Ann Med Surg* 2012;2:82:104719. <https://doi.org/10.1016/j.amsu.2022.104719>.
- [17] Chikwe J, Lee T, Itagaki S, Adams DH, Egorova NN. Long-term outcomes after off-pump versus on-pump coronary artery bypass grafting by experienced surgeons. *J Am Coll Cardiol* 2018;72(13):1478-86. <https://doi.org/10.1016/j.jacc.2018.07.029>.
- [18] Shaefi S, Mittel A, Loberman D, Ramakrishna H. Off-pump versus on-pump coronary artery bypass grafting-A systematic review and analysis of clinical outcomes. *J Cardiothorac Vasc Anesth* 2019;33(1):232-44. <https://doi.org/10.1053/j.jvca.2018.04.012>.
- [19] Zahara R, Santoso A, Barano AZ. Myocardial fluid balance and pathophysiology of myocardial edema in coronary artery bypass grafting. *Cardiol Res Pract* 2020;2020:3979630. <https://doi.org/10.1155/2020/3979630>.
- [20] Sarkar M, Prabhu V. Basics of cardiopulmonary bypass. *Indian J Anaesth* 2017;61(9):760-7. https://doi.org/10.4103/ija.IJA_379_17.
- [21] Verrier ED, Shernan SK, Taylor KM, Van de Werf F, Newman MF, Chen JC, et al. Terminal complement blockade with pexelizumab during coronary artery bypass graft surgery requiring cardiopulmonary bypass: a randomized trial. *JAMA* 2004;291(19):2319-27. <https://doi.org/10.1001/jama.291.19.2319>.
- [22] Garcia-Dorado D, Andres-Villarreal M, Ruiz-Meana M, Inseste J, Barba I. Myocardial edema: a translational view. *J Mol Cell Cardiol* 2012;52(5):931-9. <https://doi.org/10.1016/j.yjmcc.2012.01.010>.
- [23] Turer AT, Hill JA. Pathogenesis of myocardial ischemia-reperfusion injury and rationale for therapy. *Am J Cardiol* 2010;106(3):360-8. <https://doi.org/10.1016/j.amjcard.2010.03.032>.
- [24] Munoz 3rd E, Briggs H, Tolpin DA, Lee VV, Crane T, Elayda MA, et al. Low serum sodium level during cardiopulmonary bypass predicts increased risk of postoperative stroke after coronary artery bypass graft surgery. *J Thorac Cardiovasc Surg* 2014;147(4):1351-5. <https://doi.org/10.1016/j.jtcvs.2013.09.034>.
- [25] Reiche S, Mpanya D, Vanderdonck K, Mogaladi S, Motshabi-Chakane P, Tsabedze N. Perioperative outcomes of coronary artery bypass graft surgery in Johannesburg, South Africa. *J Cardiothorac Surg* 2021;16(1):7. <https://doi.org/10.1186/s13019-020-01385-8>.
- [26] Hindricks G, Potpara T, Dagres N, Arbelo E, Bax JJ, Blomström-Lundqvist C, et al. ESC Guidelines for the diagnosis and management of atrial fibrillation developed in collaboration with the European Association for Cardio-Thoracic Surgery (EACTS): the Task Force for the diagnosis and management of atrial fibrillation of the European Society of Cardiology (ESC) Developed with the special contribution of the European Heart Rhythm Association (EHRA) of the ESC. *Eur Heart J* 2020;42(5):373-498. <https://doi.org/10.1093/eurheartj/ehaa612>.
- [27] Rezaei Y, Peifhambari MM, Nagshbandi S, Samiel N, Ghavidel AA, Dehghani MR, et al. Postoperative atrial fibrillation following cardiac surgery: from pathogenesis to potential therapies. *Am J Cardiovasc Drugs* 2019;20(2020):19-49. <https://doi.org/10.1007/s40256-019-00365-1>.
- [28] Xu J, Luc JG, Phan K. Atrial fibrillation: review of current treatment strategies. *J Thorac Dis* 2016;8(9):E886-900. <https://doi.org/10.21037/jtd.2016.09.13>.
- [29] Zam Zami IM, Pikir BS. Correlation between bioelectrical impedance analysis-measured body fat, body mass index and waist circumference with cardiovascular risk factors in acute coronary syndrome patients. *Cardiovasc Radiometab J* 2021;2(2):50-8. <https://doi.org/10.20473/ccj.v2i2.2021.50-58>.
- [30] Nagarakanti R, Ezekowitz M. Diastolic dysfunction and atrial fibrillation. *J Intervent Card Electrophysiol : Int J Arrhythm Pacing* 2008;22(2):111-8. <https://doi.org/10.1007/s10840-008-9203-8>.

- [31] Gutierrez C, Blanchard DG. Diagnosis and treatment of atrial fibrillation. *Am Fam Physician* 2016;94(6):442–52.
- [32] Hutomo SA, Subagjo A. Difficult arial fibrillation rate-control and digitalis toxicity in mitral-valve prolapse patient with hyperthyroidism. *Cardiovasc Cardiometa J* 2020;1(2):57–68. <https://doi.org/10.20473/ccj.v1i2.2020.57-68>.
- [33] Tiwari S, Schirmer H, Jacobsen BK, Hopstock LA, Nytnes A, Heggelund G, et al. Association between diastolic dysfunction and future atrial fibrillation in the Tromsø Study from 1994 to 2010. *Heart* 2015;101(16):1302–8. <https://doi.org/10.1136/heartjnl-2015-307438>.
- [34] Melduni RM, Suri RM, Seward JB, Bailey KR, Ammash NM, Oh JK, et al. Diastolic dysfunction in patients undergoing cardiac surgery: a pathophysiological mechanism underlying the initiation of new-onset post-operative atrial fibrillation. *J Am Coll Cardiol* 2011;58(9):953–61. <https://doi.org/10.1016/j.jacc.2011.05.021>.
- [35] Rezaei Y, Peighambari MM, Naghshbandi S, Samiei N, Ghavidel AA, Dehghani MR, et al. Postoperative atrial fibrillation following cardiac surgery: from pathogenesis to potential therapies. *Am J Cardiovasc Drugs : Drugs, Dev Other Intervent* 2020; 20(1):19–49. <https://doi.org/10.1007/s40256-019-00365-1>.

Diastolic dysfunction and atrial fibrillation

ORIGINALITY REPORT

14%

SIMILARITY INDEX

9%

INTERNET SOURCES

12%

PUBLICATIONS

%

STUDENT PAPERS

PRIMARY SOURCES

1	Ocay, Don Daniel. "Improving the Clinical Assessment of Pain Processes in Pediatric Patients with Chronic Musculoskeletal Pain", McGill University (Canada), 2023 Publication	1%
2	clinicalhypertension.biomedcentral.com Internet Source	1%
3	www.jpap.com.pk Internet Source	1%
4	Hall, Angela Jane Moss. "Screening People with Diabetes for Atrial Fibrillation", Lancaster University (United Kingdom), 2023 Publication	1%
5	www.thieme-connect.com Internet Source	1%
6	"Diastolic Function", Elsevier BV, 2016 Publication	<1%
7	shura.shu.ac.uk Internet Source	<1%

8

www.lscip.net

Internet Source

<1 %

9

Dewey, S.. "Static and dynamic properties of the HCM myocardium", *Journal of Molecular and Cellular Cardiology*, 201011

Publication

<1 %

10

Kenneth M. Taylor. "Antiinflammatory Effects of Aprotinin", *Transfusion Alternatives in Transfusion Medicine*, 10/2004

Publication

<1 %

11

Yicen Zhang, Guotong Sun, Wenyuan Zhu, Peixin Wang, Lei Wang, Hongyan Dai. "Feasibility study on evaluating right ventricular diastolic function by new Tei'-Index", *Heliyon*, 2023

Publication

<1 %

12

ajemjournal.com

Internet Source

<1 %

13

Peter L. M. Kerkhof, Neal Handy. "Are left atrial strain metrics and a biochemical marker superior to traditional left atrial size measures when identifying occult atrial fibrillation?", *Journal of Clinical Ultrasound*, 2023

Publication

<1 %

14

www.frontiersin.org

Internet Source

<1 %

- | | | |
|----|--|------|
| 15 | Simone Longhi, Candida Cristina Quarta, Agnese Milandri, Massimiliano Lorenzini et al. "Atrial fibrillation in amyloidotic cardiomyopathy: prevalence, incidence, risk factors and prognostic role", Amyloid, 2015
Publication | <1 % |
| 16 | Deyranlou, Amin. "Development a Numerical Workflow to Study Effects of Atrial Fibrillation on Cardiovascular Circulation", The University of Manchester (United Kingdom)
Publication | <1 % |
| 17 | www.wjgnet.com
Internet Source | <1 % |
| 18 | epub.uni-regensburg.de
Internet Source | <1 % |
| 19 | Jae K. Oh, Christopher P. Appleton, Liv K. Hatle, Rick A. Nishimura, James B. Seward, A.Jamil Tajik. "The noninvasive assessment of left ventricular diastolic function with two-dimensional and Doppler echocardiography", Journal of the American Society of Echocardiography, 1997
Publication | <1 % |
| 20 | listens.online
Internet Source | <1 % |
| 21 | ohsu.pure.elsevier.com
Internet Source | <1 % |

22 Tulio Caldonazo, Hristo Kirov, Mohamed Rahouma, N. Bryce Robinson et al. "Atrial Fibrillation after Cardiac Surgery – A Systematic Review and Meta-Analysis", The Journal of Thoracic and Cardiovascular Surgery, 2021
Publication <1 %

23 eastmid.openrepository.com
Internet Source <1 %

24 www.apiindia.org
Internet Source <1 %

25 MEI WANG. "Interatrial Mechanical Dyssynchrony Worsened Atrial Mechanical Function in Sinus Node Disease With or Without Paroxysmal Atrial Fibrillation", Journal of Cardiovascular Electrophysiology, 11/2009
Publication <1 %

26 cris.maastrichtuniversity.nl
Internet Source <1 %

27 dergipark.org.tr
Internet Source <1 %

28 www.anesthesiaandanalgesia.net
Internet Source <1 %

29 Kiran K. Cheruku. "Efficacy of Nonsteroidal Anti-Inflammatory Medications for Prevention of Atrial Fibrillation Following Coronary Artery <1 %

Bypass Graft Surgery", Preventive Cardiology, 1/2004

Publication

30

Saxena, Sonakshi. "A Study to Correlate Glycosylated Hemoglobin (HbA1c) as a Predictor of Left Ventricular Hypertrophy (LVH) and Left Ventricular Diastolic Dysfunction (LVDD) in Newly Detected Type 2 Diabetes Patients in Kempegowda Institute of Medical Sciences Hospital", Rajiv Gandhi University of Health Sciences (India), 2023

Publication

<1 %

31

academic.oup.com

Internet Source

<1 %

32

circ.ahajournals.org

Internet Source

<1 %

33

scholars.uky.edu

Internet Source

<1 %

34

www.coursehero.com

Internet Source

<1 %

35

"Diabetes and Cardiovascular Disease", Springer Science and Business Media LLC, 2023

Publication

<1 %

36

"Hypertension in Children and Adolescents", Springer Science and Business Media LLC, 2019

<1 %

37

"Imaging and Diagnostic Testing", Journal of the American College of Cardiology, 20080311

Publication

<1 %

38

Jill B. Whelan, Loryn S. Feinberg. "Chapter 7 Cardiovascular Disease in Pregnancy", Springer Science and Business Media LLC, 2017

Publication

<1 %

39

Marianne Debrunner, Barbara Naegeli, Michele Genoni, Marko Turina, Osmund Bertel. "Prevention of atrial fibrillation after cardiac valvular surgery by epicardial, biatrial synchronous pacing", European Journal of Cardio-Thoracic Surgery, 2004

Publication

<1 %

40

W. S. SPEIDL. "Complement in atherosclerosis: friend or foe? : Complement in atherosclerosis: friend or foe?", Journal of Thrombosis and Haemostasis, 03/2011

Publication

<1 %

41

bjcvs.org

Internet Source

<1 %

42

ichgcp.net

Internet Source

<1 %

43

www.medicinescience.org

Internet Source

<1 %

44

www.ncbi.nlm.nih.gov

Internet Source

<1 %

45

Gary W. Roach. "Adverse Cerebral Outcomes after Coronary Bypass Surgery", *New England Journal of Medicine*, 12/19/1996

Publication

<1 %

46

Ana M. Schroh, Lidia B. Laghezza, Pablo J. Domínguez, Virginia Brandán, Daniel E. Nento. "Echocardiographic Doppler Evaluation of Ventricular Function in Children With an Atrial Septal Defect", *Revista Española de Cardiología (English Edition)*, 2008

Publication

<1 %

47

Lin Qiu, Min Li, Zhi Wang, Fangfang Fan, Tiesi Yi, Haoyu Weng, Ying Yang, Wei Ma. "Changes in left atrial function after percutaneous closure of patent foramen ovale", *Research Square Platform LLC*, 2023

Publication

<1 %

48

Piotr Knapik, Grzegorz Hirnle, Anetta Kowalczyk-Wieteska, Michał O.Zembala et al. "Off-pump versus on-pump coronary artery surgery in octogenarians (from the KROK Registry)", *PLOS ONE*, 2020

Publication

<1 %

49

Savina Nodari, Marco Metra, Livio Dei Cas. " β -Blocker treatment of patients with diastolic heart failure and arterial hypertension. A prospective, randomized, comparison of the long-term effects of atenolol vs. nebivolol", *European Journal of Heart Failure*, 2003

Publication

<1 %

50

Sheng Peng, Juan Wang, Hui Yu, Ge Cao, Peirong Liu. "Influence of Dexmedetomidine on Post-operative Atrial Fibrillation After Cardiac Surgery: A Meta-Analysis of Randomized Controlled Trials", *Frontiers in Cardiovascular Medicine*, 2021

Publication

<1 %

51

pure.rug.nl
Internet Source

<1 %

Exclude quotes On

Exclude matches Off

Exclude bibliography On

Diastolic dysfunction and atrial fibrillation

GRADEMARK REPORT

FINAL GRADE

GENERAL COMMENTS

/100

PAGE 1

PAGE 2

PAGE 3

PAGE 4

PAGE 5

PAGE 6

PAGE 7

PAGE 8
