

Correlation between estrogen receptor

by Anny Setijo Rahaju

Submission date: 20-May-2024 06:26PM (UTC+0800)

Submission ID: 2383908409

File name: Correlation_between_estrogen_receptor.pdf (1.77M)

Word count: 3484

Character count: 18589



Correlation between estrogen receptor and programmed death ligand-1 in type I endometrial cancer

Setyo Teguh Waluyo^a, Brahmna Askandar Tjokropawiro^{b,*}, Anny Setijo Rahaju^c

^a Subspecialist Education Program, Division of Gynecologic Oncology, Department of Obstetrics and Gynecology, Dr. Soetomo General Academic Hospital, Medical Faculty – Universitas Airlangga, Surabaya, Indonesia

^b Division of Gynecologic Oncology, Department of Obstetrics and Gynecology, Faculty of Medicine, Universitas Airlangga/Dr. Soetomo General Academic Hospital, Surabaya, Indonesia

^c Department of Anatomical Pathology, Faculty of Medicine, Universitas Airlangga/Dr. Soetomo General Academic Hospital/ Universitas Airlangga Hospital, Surabaya, Indonesia

ARTICLE INFO

Keywords:

Estrogen receptor
Endometrial cancer, programmed death ligand-1

ABSTRACT

Objective: To determine the effect of estrogen receptor (ER) on programmed death-ligand 1 (PD-L1) expression in type I endometrial cancer (EC).

Material and Methods: This retrospective study included 85 patients with type I EC who underwent surgery at Dr. Soetomo Hospital between 2018 and 2022. A random sampling technique was employed. Immunohistochemistry (IHC) with ER and PD-L1 antibodies was performed on all samples. In this study, ER expression served as the independent variable, while PD-L1 expression was considered the dependent variable. Data analysis was performed using Spearman's rank correlation coefficient test.

Results: Out of the 85 patients with type I EC, 58 (68.2%) exhibited positive and 27 (31.8%) exhibited negative ER expression. Meanwhile positive PD-L1 expression was seen in 67 (78.8%) and 18 (21.2%) exhibited negative PD-L1 expression. The study revealed a strong negative correlation between ER and PD-L1 expression in EC (rho value = -0.886, p-value = 0.0001).

Conclusion: ER downregulates PD-L1 in type I EC. The findings of this study can be used as reference data and as the basis for further research, especially investigations of the prognostic and immunotherapeutic value of ER and PD-L1 expression in type I EC.

1. Introduction

Endometrial cancer encompasses a group of primary malignant epithelial tumors that originate in the inner surface of the uterine wall, known as the endometrium. The most common causes of EC include a family history of the disease, menstrual abnormalities, infertility, exposure to estrogen, the use of hormonal drugs, obesity, diabetes, and a high body mass index (BMI) [1]. Notably, the incidence of endometrial cancer is on the rise, particularly in developed countries, like the United States [2]. In Korea, the increasing incidence can be attributed to shifting lifestyles and environmental factors [3–5]. In Indonesia, EC is now the third leading cause of cancer-related death among women [6]. Projections suggest that the incidence of EC may increase by 20.3% by 2025, with a corresponding 17.4% rise in the number of deaths

compared to 2018 [5].

Endometrial cancer is classified into two main histological types: I and II. Type I, which accounts for approximately 85% of cases of EC, is often linked to estrogen exposure. It is characterized by well-differentiated endometrioid histology, hormone receptor expression, and diploidy. Notably, it tends to be diagnosed at an early stage and carries a good prognosis. In contrast, Type II endometrial cancer is associated with advanced disease stages, non-endometrioid histological characteristics (serous endometrial carcinoma, clear cell carcinoma, or mixed carcinoma), high histological grade, aneuploidy, lack of hormone receptors, frequent TP53 mutations, and poor prognosis [7–9]. Recent advancements in genome analysis technology have revealed genomic anomalies within EC. Additionally, integrated genomic analyses have identified molecular subgroups that align with prognosis. The most

* Correspondence to: Department of Obstetrics and Gynecology, Faculty of Medicine, Universitas Airlangga/ Dr. Soetomo General Academic Hospital, Prof. Dr. Moestopo 6-8, Surabaya 60286, Indonesia.

E-mail address: brahmnaaskandar@fk.unair.ac.id (B.A. Tjokropawiro).

<https://doi.org/10.1016/j.eurox.2024.100293>

Received 4 October 2023; Received in revised form 25 January 2024; Accepted 16 February 2024

Available online 20 February 2024

2590-1613/© 2024 The Authors. Published by Elsevier B.V. This is an open access article under the CC BY-NC license (<http://creativecommons.org/licenses/by-nc/4.0/>).

notable approach of integrating molecular characteristics with EC classification by the Cancer Genome Atlas (TCGA) has resolved the numerous limitations in risk stratification [1]. The TCGA classifies EC into four distinct genomic categories that are Poymerase e mutation (POLE-Mutant), Mismatch Repair Deficiency (MMRd), P53 wild type / Non Specified Molecular Profile (NSMP), P53 high copy (P53-abn) [10].

Diverse biological abnormal changes in pathways have been discerned in EC cells. This has prompted the active development of novel therapeutic drugs and biomarkers, including immunomodulation inhibitors targeting programmed cell death protein 1 (PD-1) or PD-L1, to address these anomalies [1]. The landscape of cancer therapy has shifted with the advent of precision therapy and ongoing EC research. Immunotherapy, particularly is the use of a PD-1 inhibitors can be influenced by the expression of its ligand, PD-1 inhibitor as a potential treatment for EC the recommendations of the National Comprehensive Cancer Network (NCCN). Elevated expression of PD-L1 may be an immune response to tumor invasion.

Previous studies examining the correlation between ER and PD-L1 in breast cancer patients [11] have revealed that ER downregulates PD-L1 expression through interleukin-17 (IL-17). Based on these findings, we have designed a study to determine the effect of the ER on PD-L1 expression in type I EC wich is also estrogen dependent cancer, while also exploring the potential utility of ER status in the use of inhibitor immunotherapy in EC.

2. Materials and methods

This was a retrospective, cross-sectional histopathological study conducted using paraffin blocks of tissue obtained from patients who received treatment for type I EC at Dr. Soetomo Hospital Surabaya, Indonesia, between January 2018 to December 2022. We found total sample of 115 patient who meet inclusion and exclusion criteria, and 85 patient samples were collected through random sampling to reduce of bias. The inclusion criteria stipulated that patients had type I EC and underwent surgery at Dr. Soetomo Hospital, Surabaya, from 2018 to 2022. Paraffin blocks containing representative tumor masses were available at the Anatomical Pathology Laboratory of Dr. Soetomo Hospital. The exclusion criteria involved cases of type I EC that had malignancy in other organs. In this study, ER expression in type I EC served as the independent variable, and PD-L1 expression in type I EC was the dependent variable. Data analysis was performed using Spearman's rank correlation coefficient test.

Paraffin blocks of tissues from patients with type I EC were collected from the anatomical pathology laboratory to obtain immunohistochemical data for ER and PD-L1 antibodies. ER expression was determined, by staining endometrial tissue paraffin blocks with Biocare Medical ER™ (SP1) ER antibodies using the LSAB II method and fixation with 10% neutral buffered formalin (NFB). For PD-L1 expression analysis, immunohistochemical staining was performed on endometrial tissue paraffin blocks using the PD-L1 GeneAb™ antibody from GenomeMe™ clone IHC41.1. It was derived from the membrane or cytoplasm of rabbit monoclonal cells using the LSAB II method and fixation with 10% NFB. The methodology was approved by the Research Ethics Committee of Dr. Soetomo Hospital Surabaya, Indonesia.

3. Results

A total of 85 patient samples were collected. Results showed that there were 41 patients (48.2%) in the age group < 55 years and 44 patients (51.8%) in the age group > 55 years. The BMI group had 6 patients (7.1%) in the underweight group, 36 patients (42.4%) in the normal-weight group, 14 patients (16.5%) in the overweight group, 23 patients (27.1%) in the obesity class I group, and 6 patients (7.1%) in the obesity class II group. In the menopausal status group, 39 patients (45.9%) were in the premenopausal group and 46 patients (54.1%) in the menopausal group. The disease stage group had 45 patients (52.9%)

in the early stage group and 40 patients (47.1%) in the advanced stage group. The cell differentiation group, 54 patients (63.5%) in the low-grade group, and 31 patients (36.5%) in the high-grade group. The nodal metastasis group had 76 patients (89.4%) in the group with no nodal metastasis and 9 patients (10.6%) in the group with nodal metastatic. In the LVSI group, 59 patients (69.4%) were found in the group with no LVSI and 26 patients (30.6%) in the group with LVSI. The myometrial invasion group had 22 patients (25.9%) in the group with < 1/2 myometrial invasion, and 63 patients (74.1%) in the group with ≥ 1/2 myometrial invasion. The adjuvant therapy group had 19 patients (22.4%) in the group that was not given adjuvant therapy, and 66 patients (77.6%) in the group that was given adjuvant therapy. Table 1.

3.1. Positive ER and PD-L1 expression in type I EC

Among the 85 patients with type I EC, 58 (68.2%) exhibited positive ER expression, while 27 (31.8%) were ER-negative. Moreover, out of the

34
Table 1
Sample Demographic.

Characteristics	Frequency	Percentage
Age	Mean: 53.42	
<55 years	41	48.2 %
≥55 years	44	51.8 %
Sum	85	100 %
BMI		
Underweight	6	7.1 %
Normoweight	36	42.4 %
Overweight	14	16.5 %
Obesity class 1	23	27.1 %
Obesity class 2	6	7.1 %
Obesity class 3	0	0 %
Sum	85	100 %
Menopause status		
Yes	46	54.1 %
No	39	45.9 %
Sum	85	100 %
Cancer Stage		
Early Stage (I, II)	45	52.9 %
Advanced Stage (III, IV)	40	47.1 %
Sum	85	100 %
Myometrium Invasion:		
<1/2 myometrium	22	25.9 %
≥1/2 myometrium	63	74.1 %
Sum	85	100 %
Nodal metastasis:		
Yes	9	10.6 %
No	76	89.4 %
Sum	85	100 %
Cell Differentiation (tumor grade):		
Low grade (I and II)	54	63.5 %
High grade (III and IV)	31	36.5 %
Sum	85	100 %
LVSI:		
Yes	26	30.6 %
No	59	69.4 %
Sum	85	100 %
Adjuvant Therapy:		
Yes	66	77.6 %
No	19	22.4 %
Sum	85	100 %
Expression of ER:		
Positive	58	68.2 %
Negative	27	31.8 %
Sum	85	100 %
Expression of PD-L1:		
Positive	67	21.2%
Negative	18	21.2 %
Sum	85	100 %

85 patients with type I EC, 67 (78.8%) displayed positive PD-L1 expression, whereas 18 (21.2%) were PD-L1-negative. (Fig. 1).

3.2. Correlation between ER and PD-L1 expression in type I EC

Coefficient correlation analysis using Spearman's rank was conducted to test the correlation between ER and PD-L1 expression. The results indicated a statistically strong negative correlation between ER and PD-L1 expression in type I EC, with a rho value of -0.886 and a p-value of 0.0001 . (Fig. 2) Based on this result we assume that ER expression downregulates PD-L1 in type I EC.

4. Discussion

The result of the present study found that ER expression was positive in 68.2% of the cases of type 1 endometrial cancer. This finding is similar to the results of the study by Wang et al. in 2007, in which ER positivity was found in 59.8% of cases of endometrial cancer in a study population in China [12]. The results of the present study also indicated that PD-L1 expression was positive in 78.8% of the cases of type 1 endometrial cancer. A meta-analysis of 11 studies revealed that PD-L1 expression in endometrial cancer is quite diverse. The results of our study are similar to those of Zhang et al. (2020), in which PD-L1 positivity was found in 70.14% of endometrial cancer cases in a study population in Japan [13]. Engerud et al. also reported PD-L1 positivity of 63% in primary tumors [14]. Through gene expression analysis, researchers have shown that PD-L1 is upregulated in PD-1-positive tumor cells [15]. In contrast, Pasenan et al., in a 2019 study of patients in Finland, reported a PD-L1 positivity of only 8.58%. This difference is likely due to racial differences in the research sample, but whether there is a relationship between PD-L1 expression and race requires further research [16].

4.1. Role of PD-1/PD-L1 in immunotherapy for EC

The PD-1/PD-L1 pathway plays a crucial role in the immune escape mechanism and growth of cancer cells in EC. Clinical trials investigating efficacy of PD-1/PD-L1 inhibitor have shown promising results in EC [17]. PD-1 inhibitors as a potential treatment for EC has been recommended by NCCN. Immunotherapy, particularly is the use of a PD-1 inhibitors can be influenced by the expression of its ligand, Elevated expression of PD-L1 may be an immune response to tumor invasion. Recent investigations have unveiled that anti-PD-1/PD-L1 first line therapy yields response rates varying between 20% and 65% in

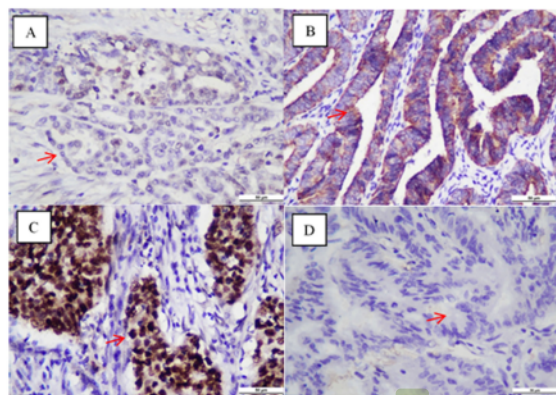


Fig. 1. Negative expression of ER in the cell nucleus (A). Strong expression of PD-L1 in the cell membrane (B). Strong expression of ER on the cell nucleus (C). Negative expression of PD-L1 on the cell membrane (D). There is a negative correlation between ER expression and PD-L1 expression. (magnification: 400x, scale bar: 50 μ m).

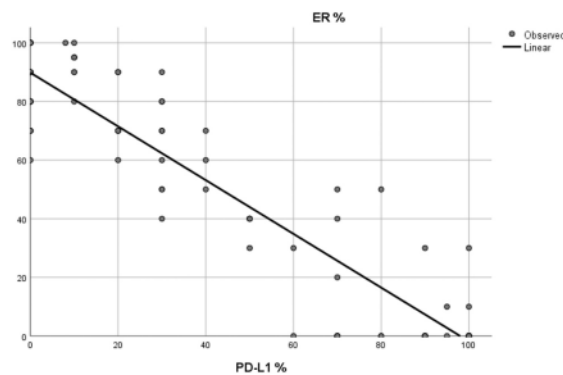


Fig. 2. Correlation Coefficient Curve of ER and PD-L1 Expression.

PD-L1-positive tumours in various cancers, including EC [17]. Conversely, tumours lacking PD-L1 expression exhibit response rates ranging from 0% to 17% across diverse tumour types [18]. The significance of PD-L1 expression within the tumour microenvironment is recognised as a pivotal biomarker for identifying individuals who are more likely to benefit therapeutically from immunotherapy.

4.2. PD-L1 regulation by estrogen pathway in cancer

Estrogens downregulate PD-L1 expression in EC and correlates with ER-negative status in EC [11] Estrogen mechanisms modifying PD-L1 seem to be complex and may depend on several factors such as cancer type, histology, tumor mutational burden (TMB), ER isoforms, Aromatase expression and estrogen levels. This relationship needs to be explored since E2 pathway blocking could improve immunotherapy in some cancers [19].

The results of the present study showed a strong negative correlation between ER and PD-L1 expression in type 1 endometrial cancer (rho value = -0.886 and p-value = 0.0001). This negative correlation may be because ER downregulates PD-L1 by activated estradiol to recruit a repressor of estrogen receptor activity (REA) and form the ER/REA complex, which binds the estrogen receptor element (ERE) on the retinoic acid receptor-related orphan nuclear receptor gamma (ROR γ T) promoter. As a result of the inhibition of ROR γ T, Th17 cell differentiation, and infiltration are impeded, thereby weakening IL-17 signal transduction intensity and decreasing PD-L1 expression [11,20].

ER deficiency causes increased infiltration of Th17 cells, which upregulate IL-17 signal transduction. IL-17 binds its receptor IL-17R in the tumor microenvironment, which activates NF- κ B signaling and NF- κ B translocation to promote PD-L1 translation and increase expression on the cell membrane. The synergy of IL-17, IFN γ , and TNF α promotes PD-L1 expression [11,20]. After translation, Nf κ B regulates and maintains PD-L1 expression by inducing the transcription of the COPS5 gene, which deubiquitinates PD-L1 protein to stabilize PD-L1 on the cell membrane [11,20] (Fig. 3).

To the best of our knowledge, the present study is the first in which the correlation between ER and PD-L1 expression has been confirmed in type I EC. New therapies for EC therapy are rapidly developing. One of these novel therapies is the use of PD-1 inhibitor, the effectiveness of this approach has been demonstrated by measuring the degree of ligand (PD-L1) expression in immune cells and tumor cells. Based on these results we assume that ER status can predict the response of PD-1 inhibitor in EC, and adding anti-estrogen could potentially improve the response of PD-1 inhibitor in EC. The limitations of this study, insofar as it was a retrospective study and did not address all the possible factors that may influence PD-L1 expression. Notwithstanding these limitations, the findings we report here can serve as reference data or the base for further

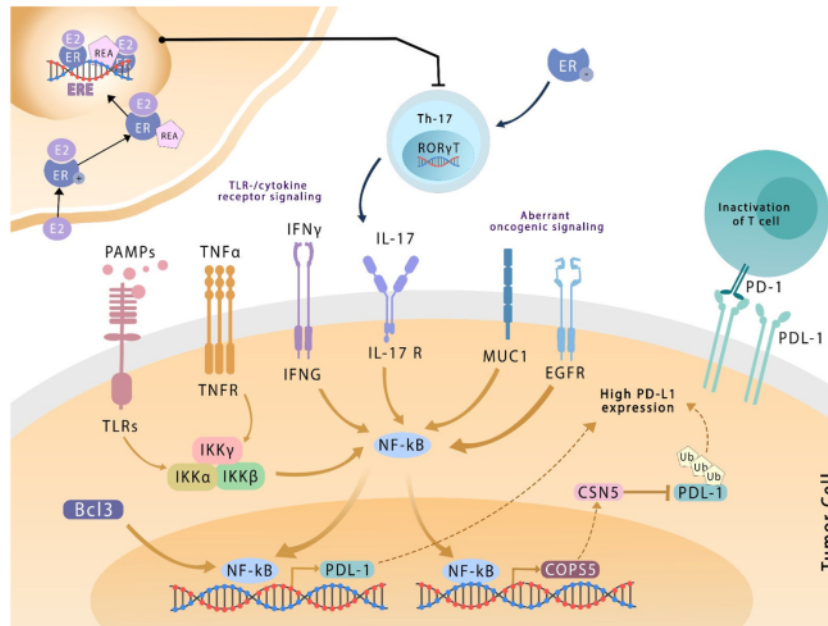


Fig. 3. PD-L1 regulation by estrogen pathway in cancer

research into the potential of ER and PD-L1 as prognostic and improve the efficacy of immunotherapy in EC.

5. Conclusion

ER downregulates PD-L1 in type 1 EC. The findings of this study can be used as reference data and as the basis for further research, especially investigations of the prognostic and immunotherapeutic value of ER and PD-L1 expression in type 1 EC. Further research is needed to determine the role of ER and PD-L1 expression in disease outcomes, recurrence rates and survival rates of patients with type 1 EC.

Funding

The authors declare no financial support for this study.

CRedit authorship contribution statement

Setyo Teguh Waluyo: Conceptualization, Data curation, Formal analysis, Writing – original draft. **Brahmana Askandar Tjokropawiro:** Formal analysis, Supervision, Writing – original draft. **Anny Setijo Rahaju:** Data curation, Writing – review & editing, Methodology.

Declaration of Competing Interest

The authors declare that they have no known competing financial interests or personal relationships that could have appeared to influence the work reported in this article.

References

- [1] Mamat @ Yusof MN, Chew KT, Kampan NC, et al. Expression of PD-1 and PD-L1 in endometrial cancer: molecular and clinical significance. *Int J Mol Sci* 2023;24. <https://doi.org/10.3390/IJMS242015233>. Epub ahead of print 1 October.
- [2] Siegel RL, Miller KD, Fuchs HE, et al. Cancer statistics, 2021. *CA Cancer J Clin* 2021;71:7–33.
- [3] Lee JY, Kim K, Lee TS, et al. Controversies in the management of endometrial cancer: a survey of the Korean Gynecologic Oncology Group. *J Gynecol Oncol* 2015;26:277.

- [4] Lim MC, Won YJ, Ko MJ, et al. Incidence of cervical, endometrial, and ovarian cancer in Korea during 1999–2015. *J Gynecol Oncol* 2019;30. <https://doi.org/10.3802/JGO.2019.30.E38>. Epub ahead of print 1 January.
- [5] Bray F, Ferlay J, Soerjomataram I, et al. Global cancer statistics 2018: GLOBOCAN estimates of incidence and mortality worldwide for 36 cancers in 185 countries. *CA Cancer J Clin* 2018;68:394–424.
- [6] Gondhowiardjo S, Christina N, Ganapati NPD, et al. Five-year cancer epidemiology at the national referral hospital: hospital-based cancer registry data in Indonesia. *JCO Glob Oncol* 2021;7:190–203.
- [7] Rabinovich A. Neo-adjuvant chemotherapy for advanced stage endometrial carcinoma: a glimmer of hope in select patients. *Arch Gynecol Obstet* 2016;293:47–53.
- [8] Lee YC, Lheureux S, Oza AM. Treatment strategies for endometrial cancer: current practice and perspective. *Curr Opin Obstet Gynecol* 2017;29:47–58.
- [9] Morice P, Leary A, Creutzberg C, et al. Endometrial cancer. *Lancet (Lond, Engl)* 2016;387:1094–108.
- [10] Kommos S, McConechy MK, Kommos F, et al. Final validation of the ProMise molecular classifier for endometrial carcinoma in a large population-based case series. *Ann Oncol J Eur Soc Med Oncol* 2018;29:1180–8.
- [11] Shuai C, Yang X, Pan H, et al. Estrogen receptor downregulates expression of PD-1/PD-L1 and infiltration of CD8+ T cells by inhibiting IL-17 signaling transduction in breast cancer. *Front Oncol* 2020;10. <https://doi.org/10.3389/FONC.2020.582863/FULL>. Epub ahead of print 25 September.
- [12] Wang C, Tran DA, Fu MZ, et al. Estrogen receptor, progesterone receptor, and HER2 receptor markers in endometrial cancer. *J Cancer* 2020;11:1693.
- [13] Zhang S, Minaguchi T, Xu C, et al. PD-L1 and CD4 are independent prognostic factors for overall survival in endometrial carcinomas. *BMC Cancer* 2020;20:1–12.
- [14] Engerud H, Berg HF, Myrvold M, et al. High degree of heterogeneity of PD-L1 and PD-1 from primary to metastatic endometrial cancer. *Gynecol Oncol* 2020;157:260–7.
- [15] Mamat @ Yusof MN, Chew KT, Kampan N, et al. PD-L1 Expression in endometrial cancer and its association with clinicopathological features: a systematic review and meta-analysis. *Cancers* 2022;14. <https://doi.org/10.3390/CANCERS14163911>. Epub ahead of print 1 August (Basel).
- [16] Pasanen A, Ahvenainen T, Pellinen T, et al. PD-L1 Expression in Endometrial Carcinoma Cells and Intratumoral Immune Cells: Differences Across Histologic and TCGA-based Molecular Subgroups. *Am J Surg Pathol* 2020;44:174–81.
- [17] Mamat @ Yusof MN, Chew KT, Hafizz AMHA, et al. Efficacy and safety of PD-1/PD-L1 inhibitor as single-agent immunotherapy in endometrial cancer: a systematic review and meta-analysis. *Cancers* 2023;15. <https://doi.org/10.3390/CANCERS15164032>. Epub ahead of print 1 August (Bsel).

- [18] Patel SP, Kurzrock R. PD-L1 expression as a predictive biomarker in cancer immunotherapy. *Mol Cancer Ther* 2015;14:847–56.
- [19] Rodriguez-Lara V, Giovanni SC, Avila-Costa MR, et al. Role of sex and sex hormones in PD-L1 expression in NSCLC: clinical and therapeutic implications. *Front Oncol* 2023;13. <https://doi.org/10.3389/FONC.2023.1210297> (Epub ahead of print).
- [20] Betzler AC, Theodoraki MN, Schuler PJ, et al. NF- κ B and its role in checkpoint control. *Int J Mol Sci* 2020;21. <https://doi.org/10.3390/IJMS21113949>. Epub ahead of print 1 June.

Correlation between estrogen receptor

ORIGINALITY REPORT

16%

SIMILARITY INDEX

12%

INTERNET SOURCES

12%

PUBLICATIONS

%

STUDENT PAPERS

PRIMARY SOURCES

1

[doku.pub](#)

Internet Source

1%

2

Qin Chen, Christoph Schatz, Yixuan Cen, Xiaojing Chen, Johannes Haybaeck, Baohua Li. "LncRNA TUG1 promotes the migration and invasion in type I endometrial carcinoma cells by regulating E-N cadherin switch", Taiwanese Journal of Obstetrics and Gynecology, 2022

Publication

1%

3

[journal.umpr.ac.id](#)

Internet Source

1%

4

[www.nature.com](#)

Internet Source

1%

5

Clarence Yen, Constantinos Simillis, Mariam Choudhry, Sarah Mills, Oliver Warren, Paris P. Tekkis, Christos Kontovounisios. "A comparative study of short-term outcomes of colorectal cancer surgery in the elderly population", Acta Chirurgica Belgica, 2017

Publication

1%

6	Oke Dimas Asmara, Eric Daniel Tenda, Gurmeet Singh, Ceva Wicaksono Pitoyo et al. "Lung Cancer in Indonesia", Journal of Thoracic Oncology, 2023 Publication	1 %
7	topsecretapiaccess.dovepress.com Internet Source	1 %
8	www.researchsquare.com Internet Source	1 %
9	Qingling Han, Se Ik Kim, Soon Ho Yoon, Taek Min Kim, Hyun-Cheol Kang, Hak Jae Kim, Jeong Yeon Cho, Jae-Weon Kim. "Impact of Computed Tomography-Based, Artificial Intelligence-Driven Volumetric Sarcopenia on Survival Outcomes in Early Cervical Cancer", Frontiers in Oncology, 2021 Publication	<1 %
10	Xiaoli Ju, Rong Shen, Pan Huang, Jianhua Zhai, Xiaobin Qian, Qiang Wang, Miao Chen. "Predictive relevance of PD-L1 expression with pre-existing TILs in gastric cancer", Oncotarget, 2017 Publication	<1 %
11	www.dmlett.com Internet Source	<1 %
12	www.omicsdi.org Internet Source	<1 %

13	jurnal.permi.or.id Internet Source	<1 %
14	medsci.org Internet Source	<1 %
15	Sarath Lal Mannumbeth Renjithlal, Mohamed Eid Magdi, Keerthi Renjith, Nikhil Cordeiro, Hazel Lever, Jeffrey Alexis, Sabu Thomas. "Trends of heart failure associated mortality in premenopausal women in the United states 1999-2020", Cold Spring Harbor Laboratory, 2024 Publication	<1 %
16	pubmed.ncbi.nlm.nih.gov Internet Source	<1 %
17	Ju-Hyun Kim, Byung-Su Kwon, Hyojin Kim, Dong Hoon Suh, Kidong Kim, Yong Beom Kim, Jae Hong No. "Clinicopathologic significance of DNA mismatch repair protein status in endometrial cancer", Taiwanese Journal of Obstetrics and Gynecology, 2022 Publication	<1 %
18	discovery.researcher.life Internet Source	<1 %
19	ia600203.us.archive.org Internet Source	<1 %
20	journals.lww.com Internet Source	<1 %

<1 %

21

mdpi-res.com

Internet Source

<1 %

22

tessera.spandidos-publications.com

Internet Source

<1 %

23

www.endocrine.org

Internet Source

<1 %

24

www.thaiscience.info

Internet Source

<1 %

25

Muhammad Arifin, Wihasto Suryaningtyas, Abdul Hafid Bajamal. "Frontoethmoidal encephalocele: clinical presentation, diagnosis, treatment, and complications in 400 cases", *Child's Nervous System*, 2018

Publication

<1 %

26

Xin Di, Xin Jin, Ranwei Li, Min Zhao, Ke Wang. "CircRNAs and lung cancer: Biomarkers and master regulators", *Life Sciences*, 2019

Publication

<1 %

27

Youn Ji Kim, Young Saing Kim, Jin Woo Shin, Biche Osong, Seok Ho Lee. "Prediction scoring system based on clinicohematologic parameters for cervical cancer patients undergoing chemoradiation", *International Journal of Gynecologic Cancer*, 2020

Publication

<1 %

28	garuda.kemdikbud.go.id Internet Source	<1 %
29	www.dovepress.com Internet Source	<1 %
30	www.ejog.org Internet Source	<1 %
31	www.ogscience.org Internet Source	<1 %
32	www.tandfonline.com Internet Source	<1 %
33	Giampiero Avruscio, Giuseppe Camporese, Elena Campello, Enrico Bernardi et al. "COVID-19 and Venous Thromboembolism in Intensive Care or Medical Ward", Clinical and Translational Science, 2020 Publication	<1 %
34	ecommons.luc.edu Internet Source	<1 %
35	ehonline.biomedcentral.com Internet Source	<1 %
36	tlcr.amegroups.com Internet Source	<1 %
37	wjso.biomedcentral.com Internet Source	<1 %

38

worldwidescience.org

Internet Source

<1 %

39

www.aging-us.com

Internet Source

<1 %

40

www.thieme-connect.com

Internet Source

<1 %

41

"European Association of Nuclear Medicine October 22 – 30, 2020 Virtual", *European Journal of Nuclear Medicine and Molecular Imaging*, 2020

Publication

<1 %

42

Beata Kotowicz, Malgorzata Fuksiewicz, Joanna Jonska-Gmyrek, Alicja Berezowska et al. "Clinical significance of pretreatment serum levels of VEGF and its receptors, IL- 8, and their prognostic value in type I and II endometrial cancer patients", *PLOS ONE*, 2017

Publication

<1 %

43

Noorah Almadani, Emily Frances Thompson, Basile Tessier-Cloutier, Jennifer Pors, Lynn Hoang. "An update of molecular pathology and shifting systems of classification in tumours of the female genital tract", *Diagnostic Histopathology*, 2020

Publication

<1 %

Exclude quotes On

Exclude matches Off

Exclude bibliography On