

LAMPIRAN

Lampiran 1. Jumlah Sel Epitel Vagina Mencit

1.1 Jumlah sel epitel vagina mencit yang bertanduk pada kelompok estrus

Ulangan	Jumlah sel epitel vagina POA (sel/lapang pandang)					
	I	II	III	IV	V	VI
I	61	52	84	58	57	41
II	80	62	58	44	66	67
III	69	64	84	55	58	35
IV	88	52	60	51	48	65
V	67	63	58	55	62	64
VI	52	40	58	61	65	48
VII	66	43	56	54	64	66
VIII	69	49	67	51	66	51
IX	59	38	65	49	60	33
X	33	55	46	49	58	48
Jumlah	644	518	636	527	604	518
Rata-rata	64	52	64	53	60	52
Rata-rata POA						57

Ulangan	Jumlah sel epitel vagina P1A (sel/lapang pandang)					
	I	II	III	IV	V	VI
I	57	48	53	56	45	53
II	59	47	54	55	45	53
III	61	47	52	57	45	53
IV	57	54	51	47	52	54
V	58	56	54	47	55	53
VI	56	57	53	45	57	53
VII	62	55	55	56	53	51
VIII	66	46	52	57	55	52
IX	45	57	52	53	52	55
X	56	46	54	54	54	51
Jumlah	577	513	530	527	513	528
Rata-rata	58	51	53	53	51	53
Rata-rata P1A						53

Ulangan	Jumlah sel epitel vagina P2A (sel/lapang pandang)					
	I	II	III	IV	V	VI
I	52	52	51	54	49	55
II	56	55	52	48	48	57
III	53	50	69	54	56	53
IV	53	51	54	50	48	55
V	56	50	66	48	50	90
VI	55	48	55	51	53	56
VII	52	49	56	51	51	88
VIII	49	51	67	52	56	55
IX	50	53	62	53	49	52
X	52	51	55	56	49	75
Jumlah	528	510	587	517	509	636
Rata-rata	53	51	59	52	51	64
Rata-rata P2A						55

Ulangan	Jumlah sel epitel vagina P3A (sel/lapang pandang)					
	I	II	III	IV	V	VI
I	52	58	52	52	64	65
II	97	54	53	55	68	56
III	54	54	55	53	55	56
IV	52	61	52	52	52	52
V	101	54	59	56	58	55
VI	55	57	62	55	66	53
VII	71	56	54	52	55	52
VIII	92	55	56	55	56	53
IX	52	66	53	55	57	59
X	54	52	54	52	57	52
Jumlah	680	567	550	537	588	553
Rata-rata	68	57	55	54	59	55
Rata-rata epitel P3A						58

1.2 Jumlah sel epitel vagina mencit yang tidak bertanduk pada kelompok estrus

Ulangan	Jumlah sel epitel vagina POA (sel/lapang pandang)					
	I	II	III	IV	V	VI
I	3	0	0	2	0	3
II	2	0	0	0	0	0
III	1	0	0	0	0	1
IV	1	0	0	2	0	0
V	3	0	0	0	0	0
VI	1	0	0	3	0	2
VII	1	1	0	0	0	1
VIII	2	3	0	0	0	0
IX	1	2	1	0	0	0
X	0	0	0	0	0	1
Jumlah	15	6	1	7	0	8
Rata-rata	2	1	0	1	0	1
Rata-rata POA						1

Ulangan	Jumlah sel epitel vagina P1A (sel/lapang pandang)					
	I	II	III	IV	V	VI
I	0	3	4	1	0	0
II	0	2	4	0	0	0
III	0	3	0	0	0	0
IV	2	0	0	1	0	0
V	1	2	1	2	0	0
VI	1	1	0	1	0	0
VII	1	2	0	0	0	0
VIII	1	0	1	0	0	0
IX	1	1	0	2	0	0
X	0	1	0	0	0	0
Jumlah	7	15	10	7	0	0
Rata-rata	1	2	1	1	0	0
Rata-rata P1A						1

Ulangan	Jumlah sel epitel vagina P2A (sel/lapang pandang)					
	I	II	III	IV	V	VI
I	1	0	1	2	0	0
II	0	0	0	2	0	1
III	1	0	2	0	0	0
IV	1	0	0	1	0	2
V	0	0	2	3	0	0
VI	1	0	0	2	0	1
VII	0	0	1	2	0	0
VIII	1	0	0	2	0	1
IX	0	0	0	1	0	0
X	1	0	1	1	0	1
Jumlah	6	0	7	16	0	6
Rata-rata	1	0	1	2	0	1
Rata-rata P2A						1

Ulangan	Jumlah sel epitel vagina P3A (sel/lapang pandang)					
	I	II	III	IV	V	VI
I	0	1	0	1	0	0
II	0	2	0	0	0	0
III	0	1	0	1	0	2
IV	0	1	1	0	1	1
V	0	2	0	0	0	0
VI	0	2	1	1	0	0
VII	0	1	0	1	1	0
VIII	0	1	0	0	0	1
IX	0	2	1	1	0	1
X	0	3	0	1	0	0
Jumlah	0	16	3	6	2	5
Rata-rata	0	2	0	1	0	1
Rata-rata P3A						1

1.3 Jumlah sel epitel vagina mencit yang bertanduk pada kelompok tidak estrus

Ulangan	Jumlah sel epitel vagina POB (sel/lapang pandang)					
	I	II	III	IV	V	VI
I	0	6	2	0	0	1
II	0	0	1	0	0	3
III	0	0	0	0	0	2
IV	1	0	0	0	1	0
V	0	0	1	0	0	3
VI	0	0	1	0	0	1
VII	1	0	0	0	2	2
VIII	0	1	2	0	0	0
IX	1	3	1	0	0	1
X	0	1	0	0	0	2
Jumlah	3	11	8	0	3	15
Rata-rata	0	1	1	0	0	2
Rata-rata POB	1					

Ulangan	Jumlah sel epitel vagina P1B (sel/lapang pandang)					
	I	II	III	IV	V	VI
I	0	0	0	1	3	0
II	0	2	0	2	1	1
III	0	0	0	2	0	0
IV	0	0	0	1	0	0
V	0	2	0	3	2	0
VI	0	0	0	3	2	0
VII	0	1	0	1	0	0
VIII	0	0	0	2	3	0
IX	1	3	0	2	1	0
X	0	0	0	0	0	0
Jumlah	1	8	0	17	12	1
Rata-rata	0	1	0	2	1	0
Rata-rata P1B	1					

Ulangan	Jumlah sel epitel vagina P2B (sel/lapang pandang)					
	I	II	III	IV	V	VI
I	0	5	0	0	3	0
II	0	1	0	0	1	0
III	1	0	0	0	5	2
IV	0	6	0	1	2	0
V	1	0	3	0	3	1
VI	1	5	2	1	3	0
VII	1	5	0	1	1	0
VIII	0	7	0	0	2	0
IX	1	0	6	1	3	0
X	1	0	8	0	2	0
Jumlah	6	29	19	4	25	3
Rata-rata	1	3	2	0	3	0
Rata-rata P2B	1					

Ulangan	Jumlah sel epitel vagina P3B (sel/lapang pandang)					
	I	II	III	IV	V	VI
I	2	0	0	0	1	0
II	4	3	0	0	1	1
III	2	2	1	0	1	0
IV	3	0	1	1	2	0
V	3	0	0	0	0	1
VI	4	0	2	0	2	1
VII	2	0	2	1	1	0
VIII	0	2	0	0	2	0
IX	0	0	0	0	0	0
X	0	3	1	0	2	0
Jumlah	20	10	7	2	12	3
Rata-rata	2	1	1	0	1	0
Rata-rata P3B	1					

1.4 Jumlah sel epitel vagina mencit yang tidak bertanduk pada kelompok tidak estrus

Ulangan	Jumlah sel epitel vagina POB (sel/lapang pandang)					
	I	II	III	IV	V	VI
I	54	73	56	46	48	56
II	51	48	47	48	44	49
III	54	63	54	49	43	44
IV	52	62	50	54	46	47
V	42	47	48	47	42	55
VI	52	40	44	45	43	46
VII	43	38	40	47	40	43
VIII	45	37	43	48	41	44
IX	40	37	55	56	42	41
X	41	37	50	48	40	42
Jumlah	474	482	487	488	429	467
Rata-rata	47	48	49	49	43	47
Rata-rata POB	47					

Ulangan	Jumlah sel epitel vagina P1B (sel/lapang pandang)					
	I	II	III	IV	V	VI
I	39	39	45	38	47	41
II	43	37	44	62	45	47
III	41	38	39	41	49	40
IV	46	45	42	58	42	43
V	41	45	44	56	38	45
VI	44	41	58	61	54	49
VII	40	50	53	97	46	39
VIII	40	45	51	33	41	40
IX	42	46	51	39	42	46
X	41	40	44	64	41	42
Jumlah	417	426	471	549	445	432
Rata-rata	42	43	47	55	45	43
Rata-rata P1B	46					

Ulangan	Jumlah sel epitel vagina P2B (sel/lapang pandang)					
	I	II	III	IV	V	VI
I	43	65	47	51	48	54
II	46	56	51	45	50	53
III	41	35	62	58	42	45
IV	43	53	57	47	43	58
V	60	38	63	66	44	48
VI	55	58	51	35	55	60
VII	43	33	51	68	46	46
VIII	54	52	59	48	44	56
IX	32	50	65	39	39	59
X	34	47	32	50	42	43
Jumlah	451	487	538	507	453	522
Rata-rata	45	49	54	51	45	52
Rata-rata P2B	49					

Ulangan	Jumlah sel epitel vagina P3B (sel/lapang pandang)					
	I	II	III	IV	V	VI
I	48	46	43	58	46	48
II	47	42	42	55	41	46
III	45	55	50	46	39	53
IV	57	44	41	66	38	48
V	51	44	46	48	40	47
VI	49	54	39	32	43	52
VII	41	45	45	64	39	47
VIII	45	43	40	54	38	42
IX	46	44	42	50	40	45
X	46	47	50	51	39	45
Jumlah	475	464	438	524	403	473
Rata-rata	48	46	44	52	40	47
Rata-rata P3B	46					

Lampiran 2. Diameter Lumen Vagina Dan Serviks

2.1 Diameter lumen vagina dan serviks mencit pada kelompok estrus

Ulangan	Diameter lumen vagina P0A (mm)					
	I	II	III	IV	V	VI
I	1,723	1,823	1,779	1,773	1,753	1,723
II	1,791	1,900	1,766	1,763	1753	1,712
III	1,822	1,594	1,784	1,768	1,793	1,723
Jumlah	5,336	5,317	5,329	5,304	5,299	5,158
Rata-rata	1,779	1,772	1,776	1,768	1,766	1,719
Rata-rata diameter lumen vagina POA				1,763		

Ulangan	Diameter lumen vagina P1A (mm)					
	I	II	III	IV	V	VI
I	1,769	1,785	1,760	1,769	1,760	1,734
II	1,769	1,747	1,781	1,773	1,732	1,696
III	1,779	1,734	1,770	1,769	1,768	1,709
Jumlah	5,317	5,266	5,311	5,311	5,260	5,138
Rata-rata	1,772	1,755	1,770	1,770	1,753	1,713
Rata-rata diameter lumen vagina P1A				1,756		

Ulangan	Diameter lumen vagina P2A (mm)					
	I	II	III	IV	V	VI
I	1,747	1,709	1,701	1,769	1,769	1,754
II	1,709	1,710	1,709	1,778	1,760	1,754
III	1,568	1,702	1,696	1,772	1,758	1,754
Jumlah	5,024	5,121	5,106	5,319	5,287	5,262
Rata-rata	1,675	1,707	1,702	1,773	1,762	1,754
Rata-rata diameter lumen vagina P2A				1,729		

Ulangan	Diameter lumen vagina P3A (mm)					
	I	II	III	IV	V	VI
I	1,658	1,668	1,747	1,785	1,785	1,785
II	1,785	1,751	1,785	1,658	1696	1,594
III	1,798	1,701	1,785	1,747	1,798	1,951
Jumlah	5,240	5,120	5,317	5,189	5,278	5,330
Rata-rata	1,747	1,707	1,772	1,730	1,759	1,777
Rata-rata diameter lumen vagina P3A				1,749		

Ulangan	Diameter lumen serviks P0A (mm)					
	I	II	III	IV	V	VI
I	1,173	1,109	1,122	1,122	1,097	1,007
II	0,969	1,035	1,033	1,097	1,097	1,011
III	1,033	1,097	1,173	1,097	1,033	1,003
Jumlah	3,175	3,241	3,328	3,315	3,226	3,021
Rata-rata	1,058	1,080	1,109	1,105	1,075	1,007
Rata-rata diameter lumen serviks POA				1,072		

Ulangan	Diameter lumen serviks P1A (mm)					
	I	II	III	IV	V	VI
I	0,956	0,956	1,020	1,084	1,020	0,995
II	1,020	1,020	1,084	1,020	0,995	0,931
III	0,995	0,995	1,020	0,995	0,931	1,046
Jumlah	2,971	2,971	3,124	3,098	2,945	2,971
Rata-rata	0,990	0,990	1,041	1,033	0,982	0,990
Rata-rata diameter lumen serviks P1A				1,004		

Ulangan	Diameter lumen serviks P2A (mm)					
	I	II	III	IV	V	VI
I	1,135	1,020	1,084	1,109	0,931	0,931
II	1,020	1,084	1,109	0,931	0,893	1,071
III	1,084	1,109	0,931	0,893	0,931	0,969
Jumlah	3,239	3,213	3,124	2,933	2,754	2,971
Rata-rata	1,080	1,071	1,041	0,978	0,918	0,990
Rata-rata diameter lumen serviks P2A				1,013		

Ulangan	Diameter lumen serviks P3A (mm)					
	I	II	III	IV	V	VI
I	1,007	1,122	1,097	1,097	0,931	1,122
II	0,931	1,122	1,033	1,007	1,097	0,969
III	0,969	0,969	1,097	1,033	0,969	1,122
Jumlah	2,907	3,213	3,226	3,137	2,996	3,213
Rata-rata	0,969	1,071	1,075	1,046	0,999	1,071
Rata-rata diameter lumen serviks P3A				1,038		

2.2 Diameter lumen vagina dan serviks mencit pada kelompok tidak estrus

Ulangan	Diameter lumen vagina P0B (mm)					
	I	II	III	IV	V	VI
I	1,135	2,754	2,690	1,135	2,550	2,690
II	1,199	2,550	2,729	1,235	2,729	2,690
III	1,352	2,690	2,729	1,209	1,352	1,135
Jumlah	3,685	7,994	8,147	3,579	6,630	6,515
Rata-rata	1,228	2,665	2,716	1,193	2,210	2,172
Rata-rata diameter lumen vagina P0B				2,031		

Ulangan	Diameter lumen vagina P1B (mm)					
	I	II	III	IV	V	VI
I	1,568	1,568	2,690	1,517	1,517	1,517
II	1,517	1,517	2,550	2,690	1,568	2,550
III	1,568	1,568	2,729	1,568	2,690	1,517
Jumlah	4,654	4,654	7,969	5,776	5,776	5,585
Rata-rata	1,551	1,551	2,656	1,925	1,925	1,862
Rata-rata diameter lumen vagina P1B				1,912		

Ulangan	Diameter lumen vagina P2B (mm)					
	I	II	III	IV	V	VI
I	2,754	1,550	1,690	1,550	1,601	1,729
II	2,550	1,690	1,550	1,601	1,729	1,423
III	2,690	1,550	1,601	1,729	1,423	1,448
Jumlah	7,994	4,790	4,841	4,880	4,753	4,600
Rata-rata	2,665	1,597	1,614	1,627	1,584	1,533
Rata-rata diameter lumen vagina P2B				1,770		

Ulangan	Diameter lumen vagina P3B (mm)					
	I	II	III	IV	V	VI
I	2,690	2,729	2,729	1,007	2,448	1,160
II	2,729	2,729	1,007	1,186	2,537	2,448
III	2,729	1,007	1,186	1,160	2,690	1,007
Jumlah	8,147	6,464	4,922	3,353	7,676	4,616
Rata-rata	2,716	2,155	1,641	1,118	2,559	1,539
Rata-rata diameter lumen vagina P3B				1,954		

Ulangan	Diameter lumen serviks P0B (mm)					
	I	II	III	IV	V	VI
I	0,510	0,510	0,395	0,593	0,599	0,395
II	0,485	0,536	0,599	0,598	0,485	0,421
III	0,421	0,536	0,638	0,599	0,638	0,638
Jumlah	1,415	1,581	1,632	1,790	1,721	1,454
Rata-rata	0,472	0,527	0,544	0,597	0,574	0,485
Rata-rata diameter lumen serviks POB				0,533		

Ulangan	Diameter lumen serviks P1B (mm)					
	I	II	III	IV	V	VI
I	0,499	0,525	0,625	0,650	0,523	0,485
II	0,525	0,525	0,650	0,523	0,485	0,612
III	0,525	0,550	0,523	0,485	0,612	0,624
Jumlah	1,549	1,600	1,798	1,658	1,619	1,721
Rata-rata	0,516	0,533	0,599	0,553	0,540	0,574
Rata-rata diameter lumen serviks P1B				0,552		

Ulangan	Diameter lumen serviks P2B (mm)					
	I	II	III	IV	V	VI
I	0,599	0,569	0,485	0,569	0,497	0,638
II	0,446	0,497	0,569	0,497	0,638	0,485
III	0,485	0,638	0,497	0,638	0,485	0,459
Jumlah	1,530	1,703	1,550	1,703	1,619	1,581
Rata-rata	0,510	0,568	0,517	0,568	0,540	0,527
Rata-rata diameter lumen serviks P2B				0,538		

Ulangan	Diameter lumen serviks P3B (mm)					
	I	II	III	IV	V	VI
I	0,459	0,536	0,612	0,625	0,510	0,586
II	0,536	0,612	0,625	0,510	0,536	0,599
III	0,612	0,625	0,510	0,536	0,599	0,582
Jumlah	1,607	1,772	1,747	1,670	1,645	1,767
Rata-rata	0,536	0,591	0,582	0,557	0,548	0,589
Rata-rata diameter lumen serviks P3B				0,567		

Lampiran 3. Hasil Analisis

3.1 Jumlah sel epitel vagina mencit yang bertanduk pada kelompok yang diinjeksi hormon estrogenik

One-Sample Kolmogorov-Smirnov Test

		Respon
N		24
Normal Parameters ^a	Mean	55.9167
	Std. Deviation	4.99492
Most Extreme Differences	Absolute	.220
	Positive	.220
	Negative	-.162
Kolmogorov-Smirnov Z		1.080
Asymp. Sig. (2-tailed)		.194

a. Test distribution is Normal.

Descriptives

respon

	N	Mean	Std. Deviation	Std. Error	95% Confidence Interval for Mean		Minimum	Maximum
					Lower Bound	Upper Bound		
P0	6	57.5000	5.85662	2.39096	51.3539	63.6461	52.00	64.00
P1	6	53.1667	2.56255	1.04616	50.4774	55.8559	51.00	58.00
P2	6	55.0000	5.32917	2.17562	49.4074	60.5926	51.00	64.00
P3	6	58.0000	5.21536	2.12916	52.5268	63.4732	54.00	68.00
Total	24	55.9167	4.99492	1.01958	53.8075	58.0258	51.00	68.00

Test of Homogeneity of Variances

Respon

Levene Statistic	df1	df2	Sig.
2.443	3	20	.094

ANOVA

respon

	Sum of Squares	df	Mean Square	F	Sig.
Between Groups	91.500	3	30.500	1.265	.313
Within Groups	482.333	20	24.117		
Total	573.833	23			

3.2 Jumlah sel epitel vagina mencit yang tidak bertanduk pada kelompok yang diinjeksi hormon estrogenik

One-Sample Kolmogorov-Smirnov Test

		Respon
N		24
Normal Parameters ^a	Mean	.7917
	Std. Deviation	.72106
Most Extreme Differences	Absolute	.239
	Positive	.239
	Negative	-.239
Kolmogorov-Smirnov Z		1.170
Asymp. Sig. (2-tailed)		.129

a. Test distribution is Normal.

Descriptives

Respon

	N	Mean	Std. Deviation	Std. Error	95% Confidence Interval for Mean		Minimum	Maximum
					Lower Bound	Upper Bound		
P0	6	.8333	.75277	.30732	.0433	1.6233	.00	2.00
P1	6	.8333	.75277	.30732	.0433	1.6233	.00	2.00
P2	6	.8333	.75277	.30732	.0433	1.6233	.00	2.00
P3	6	.6667	.81650	.33333	-.1902	1.5235	.00	2.00
Total	24	.7917	.72106	.14719	.4872	1.0961	.00	2.00

Test of Homogeneity of Variances

Respon

Levene Statistic	df1	df2	Sig.
.103	3	20	.958

ANOVA

Respon

	Sum of Squares	df	Mean Square	F	Sig.
Between Groups	.125	3	.042	.070	.975
Within Groups	11.833	20	.592		
Total	11.958	23			

3.3 Jumlah sel epitel vagina mencit yang bertanduk pada kelompok yang tidak diinjeksi hormon estrogenik

One-Sample Kolmogorov-Smirnov Test

		Respon
N		24
Normal Parameters ^a	Mean	.7917
	Std. Deviation	.88363
Most Extreme Differences	Absolute	.273
	Positive	.273
	Negative	-.185
Kolmogorov-Smirnov Z		1.338
Asymp. Sig. (2-tailed)		.056

a. Test distribution is Normal.

Descriptives

Respon

	N	Mean	Std. Deviation	Std. Error	95% Confidence Interval for Mean		Minimum	Maximum
					Lower Bound	Upper Bound		
P0	6	.6667	.81650	.33333	-.1902	1.5235	.00	2.00
P1	6	.6667	.81650	.33333	-.1902	1.5235	.00	2.00
P2	6	1.0000	1.26491	.51640	-.3274	2.3274	.00	3.00
P3	6	.8333	.75277	.30732	.0433	1.6233	.00	2.00
Total	24	.7917	.88363	.18037	.4185	1.1648	.00	3.00

Test of Homogeneity of Variances

Respon

Levene Statistic	df1	df2	Sig.
1.030	3	20	.401

ANOVA

Respon

	Sum of Squares	df	Mean Square	F	Sig.
Between Groups	.458	3	.153	.175	.912
Within Groups	17.500	20	.875		
Total	17.958	23			

3.4 Jumlah sel epitel vagina mencit yang tidak bertanduk pada kelompok yang tidak diinjeksi hormon estrogenik

One-Sample Kolmogorov-Smirnov Test

		Respon
N		24
Normal Parameters ^a	Mean	47.1250
	Std. Deviation	3.82569
Most Extreme Differences	Absolute	.104
	Positive	.104
	Negative	-.070
Kolmogorov-Smirnov Z		.508
Asymp. Sig. (2-tailed)		.959

a. Test distribution is Normal.

Descriptives

Respon

	N	Mean	Std. Deviation	Std. Error	95% Confidence Interval for Mean		Minimum	Maximum
					Lower Bound	Upper Bound		
P0	6	47.1667	2.22860	.90982	44.8279	49.5054	43.00	49.00
P1	6	45.8333	4.83391	1.97343	40.7605	50.9062	42.00	55.00
P2	6	49.3333	3.72380	1.52023	45.4254	53.2412	45.00	54.00
P3	6	46.1667	4.02078	1.64148	41.9471	50.3862	40.00	52.00
Total	24	47.1250	3.82569	.78091	45.5096	48.7404	40.00	55.00

Test of Homogeneity of Variances

Respon

Levene Statistic	df1	df2	Sig.
.801	3	20	.508

ANOVA

Respon

	Sum of Squares	df	Mean Square	F	Sig.
Between Groups	44.792	3	14.931	1.023	.403
Within Groups	291.833	20	14.592		
Total	336.625	23			

3.5 Diameter lumen vagina mencit pada kelompok yang diinjeksi hormon estrogenik

One-Sample Kolmogorov-Smirnov Test

		Respon
N		24
Normal Parameters ^a	Mean	1.7491
	Std. Deviation	.02966
Most Extreme Differences	Absolute	.219
	Positive	.157
	Negative	-.219
Kolmogorov-Smirnov Z		1.074
Asymp. Sig. (2-tailed)		.199

a. Test distribution is Normal.

Descriptives

Respon

	N	Mean	Std. Deviation	Std. Error	95% Confidence Interval for Mean		Minimum	Maximum
					Lower Bound	Upper Bound		
P0	6	1.7633	.02225	.00908	1.7400	1.7867	1.72	1.78
P1	6	1.7555	.02239	.00914	1.7320	1.7790	1.71	1.77
P2	6	1.7288	.03944	.01610	1.6874	1.7702	1.68	1.77
P3	6	1.7487	.02661	.01086	1.7207	1.7766	1.71	1.78
Total	24	1.7491	.02966	.00605	1.7366	1.7616	1.68	1.78

Test of Homogeneity of Variances

Respon

Levene Statistic	df1	df2	Sig.
2.434	3	20	.095

ANOVA

Respon

	Sum of Squares	df	Mean Square	F	Sig.
Between Groups	.004	3	.001	1.606	.219
Within Groups	.016	20	.001		
Total	.020	23			

3.6 Diameter lumen serviks mencit pada kelompok yang diinjeksi hormon estrogenik

One-Sample Kolmogorov-Smirnov Test

		Respon
N		24
Normal Parameters ^a	Mean	1.0320
	Std. Deviation	.04948
Most Extreme Differences	Absolute	.159
	Positive	.136
	Negative	-.159
Kolmogorov-Smirnov Z		.781
Asymp. Sig. (2-tailed)		.575

a. Test distribution is Normal.

Descriptives

Respon

	N	Mean	Std. Deviation	Std. Error	95% Confidence Interval for Mean		Minimum	Maximum
					Lower Bound	Upper Bound		
P0	6	1.0723	.03729	.01522	1.0332	1.1115	1.01	1.11
P1	6	1.0043	.02562	.01046	.9774	1.0312	.98	1.04
P2	6	1.0130	.06232	.02544	.9476	1.0784	.92	1.08
P3	6	1.0385	.04448	.01816	.9918	1.0852	.97	1.08
Total	24	1.0320	.04948	.01010	1.0111	1.0529	.92	1.11

Test of Homogeneity of Variances

Respon

Levene Statistic	df1	df2	Sig.
2.234	3	20	.116

ANOVA

Respon

	Sum of Squares	df	Mean Square	F	Sig.
Between Groups	.017	3	.006	2.828	.065
Within Groups	.040	20	.002		
Total	.056	23			

3.7 Diameter lumen vagina mencit pada kelompok yang tidak diinjeksi hormon estrogenik

One-Sample Kolmogorov-Smirnov Test

		Respon
N		24
Normal Parameters ^a	Mean	1.9043
	Std. Deviation	.50971
Most Extreme Differences	Absolute	.239
	Positive	.239
	Negative	-.163
Kolmogorov-Smirnov Z		1.170
Asymp. Sig. (2-tailed)		.129

a. Test distribution is Normal.

Descriptives

Respon

	N	Mean	Std. Deviation	Std. Error	95% Confidence Interval for Mean		Minimum	Maximum
					Lower Bound	Upper Bound		
P0	6	2.0307	.67382	.27509	1.3235	2.7378	1.19	2.72
P1	6	1.9117	.40423	.16503	1.4875	2.3359	1.55	2.66
P2	6	1.9367	.53923	.22014	1.3708	2.5026	1.53	2.66
P3	6	1.7380	.48291	.19715	1.2312	2.2448	1.46	2.72
Total	24	1.9042	.50971	.10404	1.6890	2.1195	1.19	2.72

Test of Homogeneity of Variances

Respon

Levene Statistic	df1	df2	Sig.
1.290	3	20	.305

ANOVA

Respon

	Sum of Squares	df	Mean Square	F	Sig.
Between Groups	.268	3	.089	.313	.815
Within Groups	5.707	20	.285		
Total	5.975	23			

3.8 Diameter lumen serviks mencit pada kelompok yang tidak diinjeksi hormon estrogenik

One-Sample Kolmogorov-Smirnov Test

		Respon
N		24
Normal Parameters ^a	Mean	.5478
	Std. Deviation	.03395
Most Extreme Differences	Absolute	.099
	Positive	.066
	Negative	-.099
Kolmogorov-Smirnov Z		.486
Asymp. Sig. (2-tailed)		.972

a. Test distribution is Normal.

Descriptives

Respon

	N	Mean	Std. Deviation	Std. Error	95% Confidence Interval for Mean		Minimum	Maximum
					Lower Bound	Upper Bound		
P0	6	.5332	.04891	.01997	.4818	.5845	.47	.60
P1	6	.5525	.02998	.01224	.5210	.5840	.52	.60
P2	6	.5383	.02510	.01025	.5120	.5647	.51	.57
P3	6	.5672	.02327	.00950	.5427	.5916	.54	.59
Total	24	.5478	.03395	.00693	.5335	.5621	.47	.60

Test of Homogeneity of Variances

Respon

Levene Statistic	df1	df2	Sig.
1.724	3	20	.194

ANOVA

Respon

	Sum of Squares	df	Mean Square	F	Sig.
Between Groups	.004	3	.001	1.257	.316
Within Groups	.022	20	.001		
Total	.027	23			

Lampiran 4. Dokumentasi Penelitian



Mikrotom



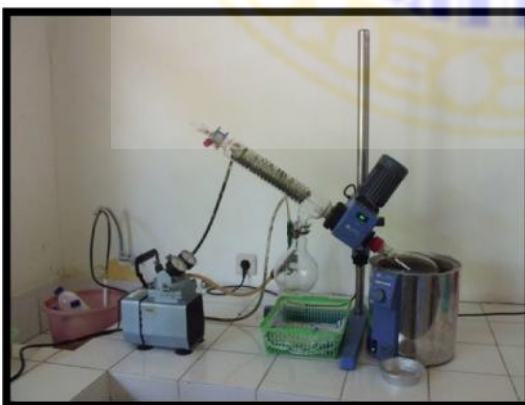
Water Bath



Seri alkohol untuk *processing*



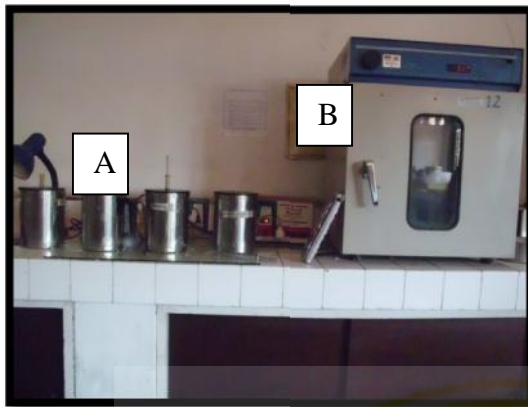
Seri alkohol untuk *staining*



Rotary evaporator



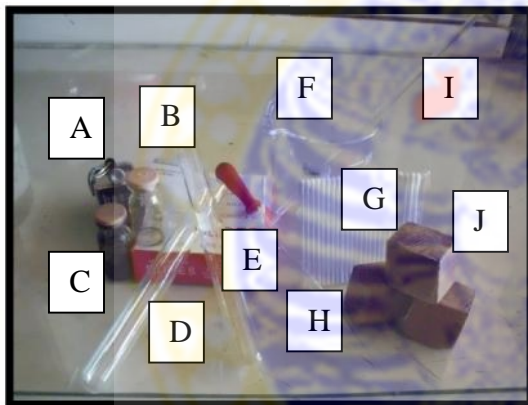
Timbangan analitik



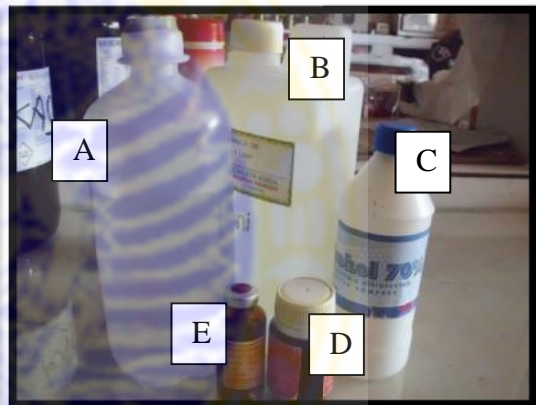
A : *Paraffin bath*
B : *Paraffin oven*



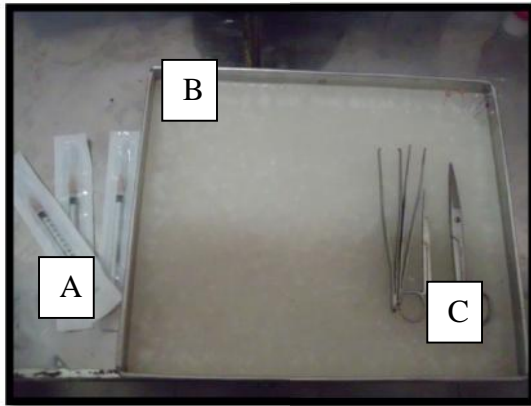
Mencit



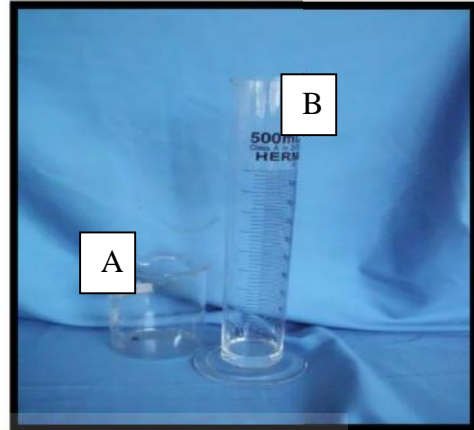
A : *Hand counter* F : Gelas beaker
B : *Cover glass* G : *Cotton buds*
C : Botol vial H : Pipet
D : Tabung reaksi I : Gelas pengaduk
E : *Objek glass* J : Balok kayu



A : Salin
B : Buffer formalin
C : Alkohol 70%
D : Pewarna MB
E : Hormon Ovalumon



A : Spuit 1 mL
B : Alas bedah
C : Pinset & gunting bedah



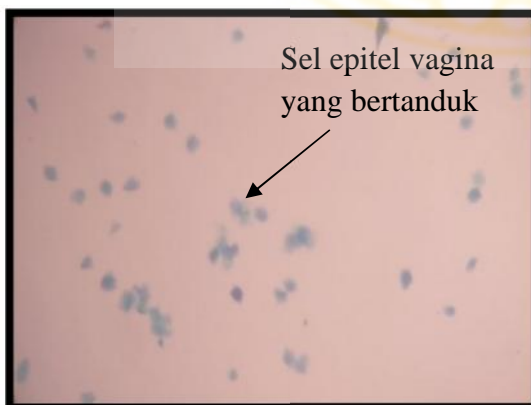
A : Gelas beaker
B : Gelas ukur



Uji LB



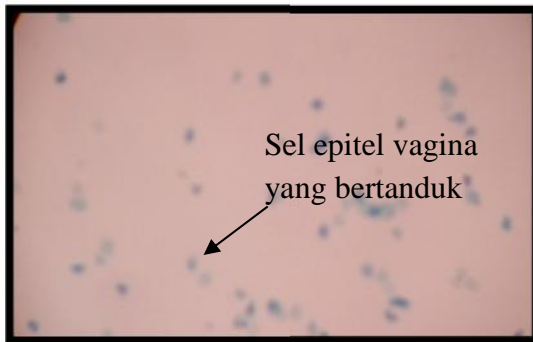
Fraksi n-butanol



Sel epitel vagina mencit kelompok kontrol dalam keadaan estrus (perbesaran 100x).



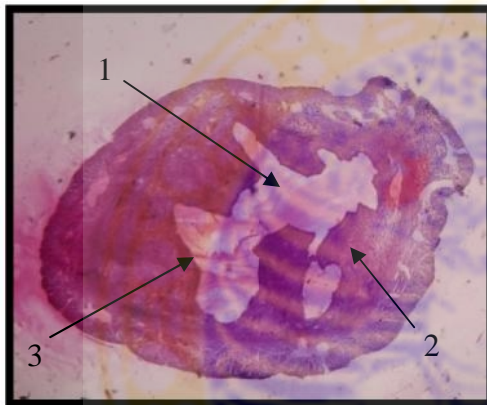
Sel epitel vagina mencit 2 jam dalam keadaan estrus (perbesaran 100x).



Sel epitel vagina mencit 4 jam dalam keadaan estrus (perbesaran 100x).

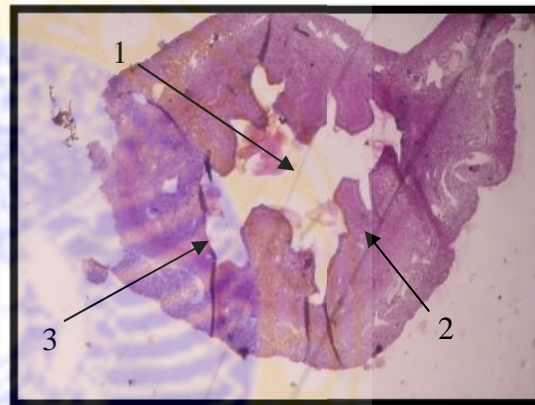


Sel epitel vagina mencit 6 jam dalam keadaan estrus (perbesaran 100x).



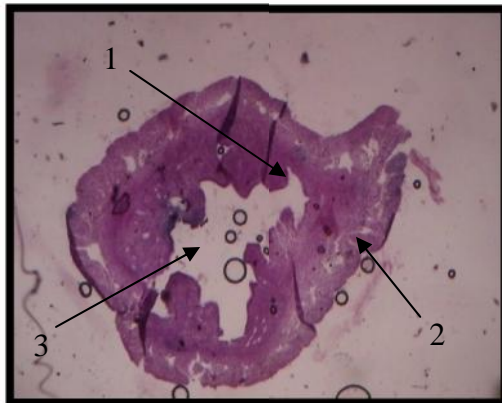
Keterangan:
1 = Lumen
2 = Lamina propria
3 = Sel epitel

Diameter serviks mencit kelompok kontrol dalam keadaan estrus (perbesaran 100x).



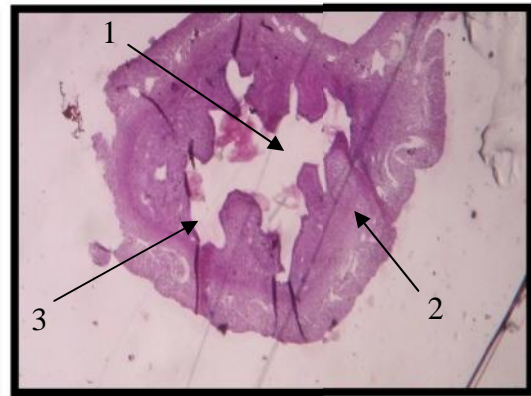
Keterangan:
1 = Lumen
2 = Lamina propria
3 = Sel epitel

Diameter serviks mencit 2 jam dalam keadaan estrus (perbesaran 100x).



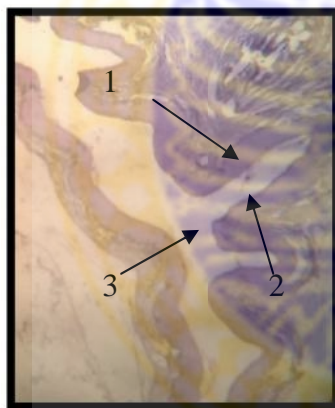
Keterangan:
1 = Sel epitel
2 = Lamina propria
3 = Lumen

Diameter serviks mencit 4 jam dalam keadaan estrus (perbesaran 100x).



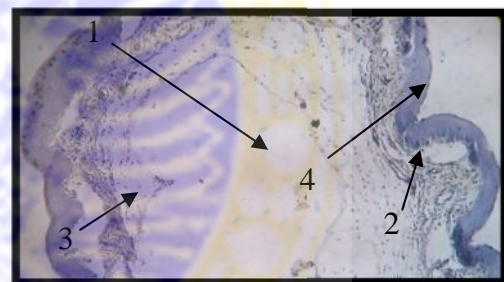
Keterangan:
1 = Lumen
2 = lamina propria
3 = Sel epitel

Diameter serviks mencit 6 jam dalam keadaan estrus (perbesaran 100x).



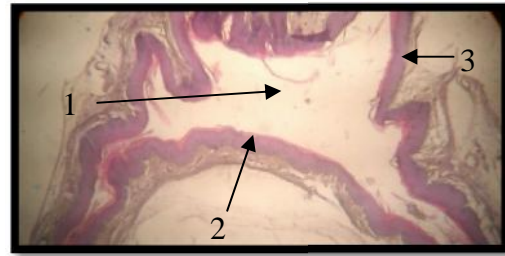
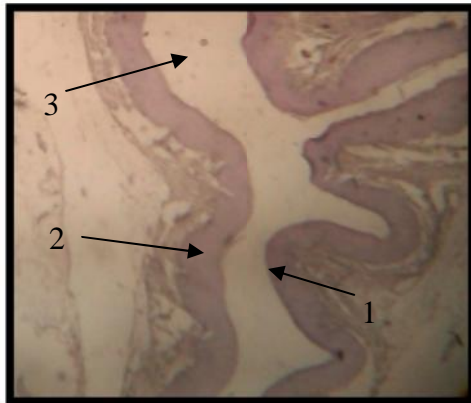
Keterangan:
1 = Lamina propria
2 = Sel epitel
3 = Lumen

Diameter vagina mencit kelompok kontrol dalam keadaan estrus (perbesaran 100x).



Keterangan:
1 = Lumen
2 = Sel epitel
3 = Mucus
4 = Lamina propria

Diameter vagina mencit 2 jam dalam keadaan estrus (perbesaran 100x).



Keterangan:
1 = Lumen
2 = Sel epitel
3 = Lamina propria

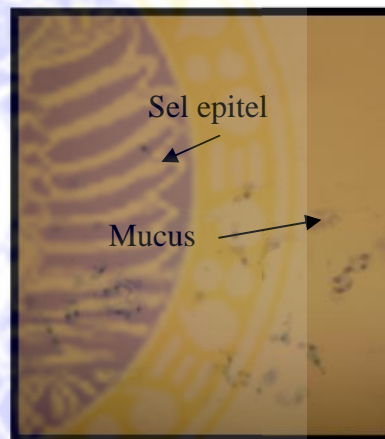
Keterangan:
1 = Sel epitel
2 = Lamina propria
3 = Lumen

Diameter vagina menciit 4 jam dalam keadaan estrus (perbesaran 100x).

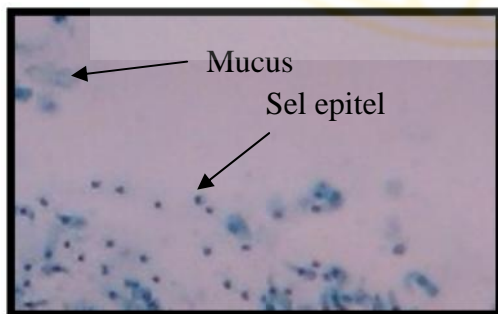
Diameter vagina menciit 6 jam dalam keadaan estrus (perbesaran 100x).



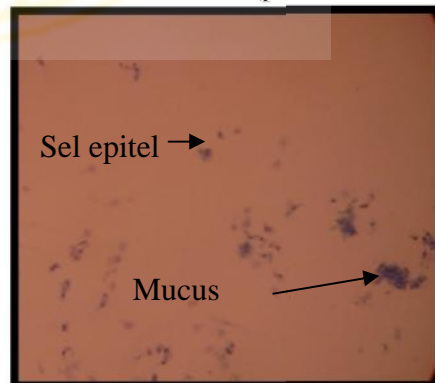
Sel epitel vagina menciit kelompok kontrol dalam keadaan tidak estrus (perbesaran 100x).



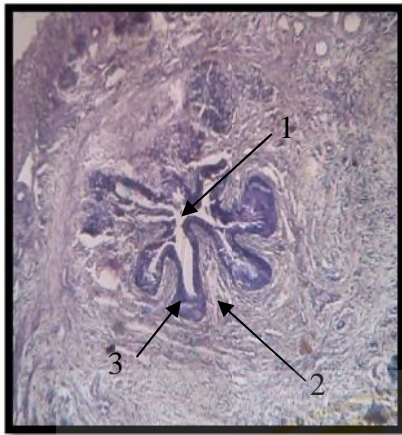
Sel epitel vagina menciit 2 jam dalam keadaan tidak estrus (perbesaran 100x).



Sel epitel vagina menciit 4 jam dalam keadaan tidak estrus (perbesaran 100x).



Sel epitel vagina menciit 6 jam dalam keadaan tidak estrus (perbesaran 100x).



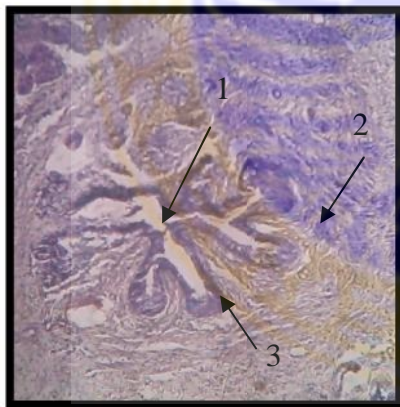
Keterangan:
1 = Lumen
2 = Lamina propria
3 = Sel epitel

Diameter serviks mencit kelompok kontrol dalam keadaan tidak estrus (perbesaran 100x).



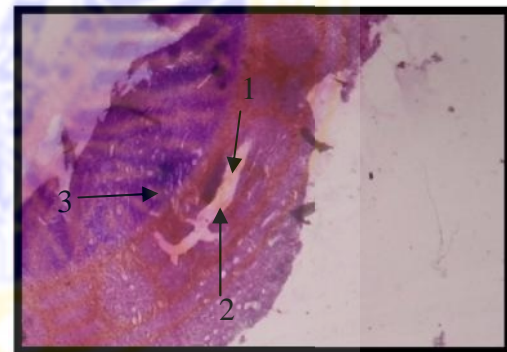
Ketereangan:
1 = Lamina propria
2 = Lumen
3 = Sel epitel

Diameter serviks mencit 2 jam dalam keadaan tidak estrus (perbesaran 100x).



Keterangan:
1 = Lumen
2 = Lamina propria
3 = Sel apitel

Diameter serviks mencit 4 jam dalam keadaan tidak estrus (perbesaran 100x).



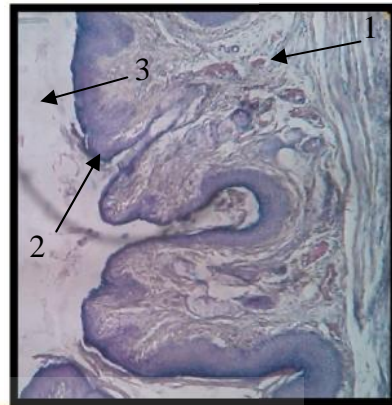
Keterangan:
1 = Lumen
2 = Sel epitel
3 = Lamina propria

Diameter serviks mencit 6 jam dalam keadaan tidak estrus (perbesaran 100x).



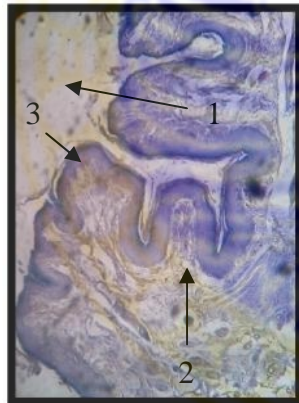
Keterangan:
1 = Sel epitel
2 = Lamina propria
3 = Lumen

Diameter vagina mencit kelompok kontrol dalam keadaan tidak estrus (perbesaran 100x).



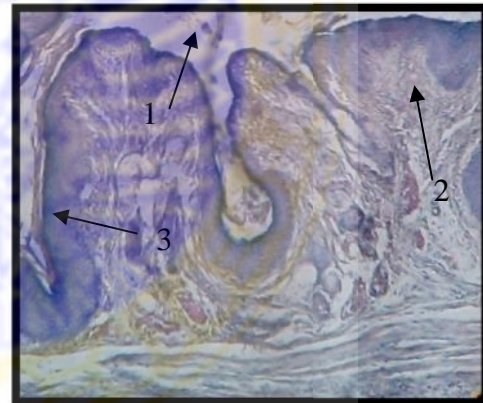
Keterangan:
1 = Lamina propria
2 = Sel epitel
3 = Lumen

Diameter vagina mencit 2 jam dalam keadaan tidak estrus (perbesaran 100x).



Keterangan:
1 = Lumen
2 = Lamina propria
3 = Sel epitel

Diameter vagina mencit 4 jam dalam keadaan tidak estrus (perbesaran 100x).



Keterangan:
1 = Lumen
2 = Lamina propria
3 = Sel epitel

Diameter vagina mencit 6 jam dalam keadaan tidak estrus (perbesaran 100x).