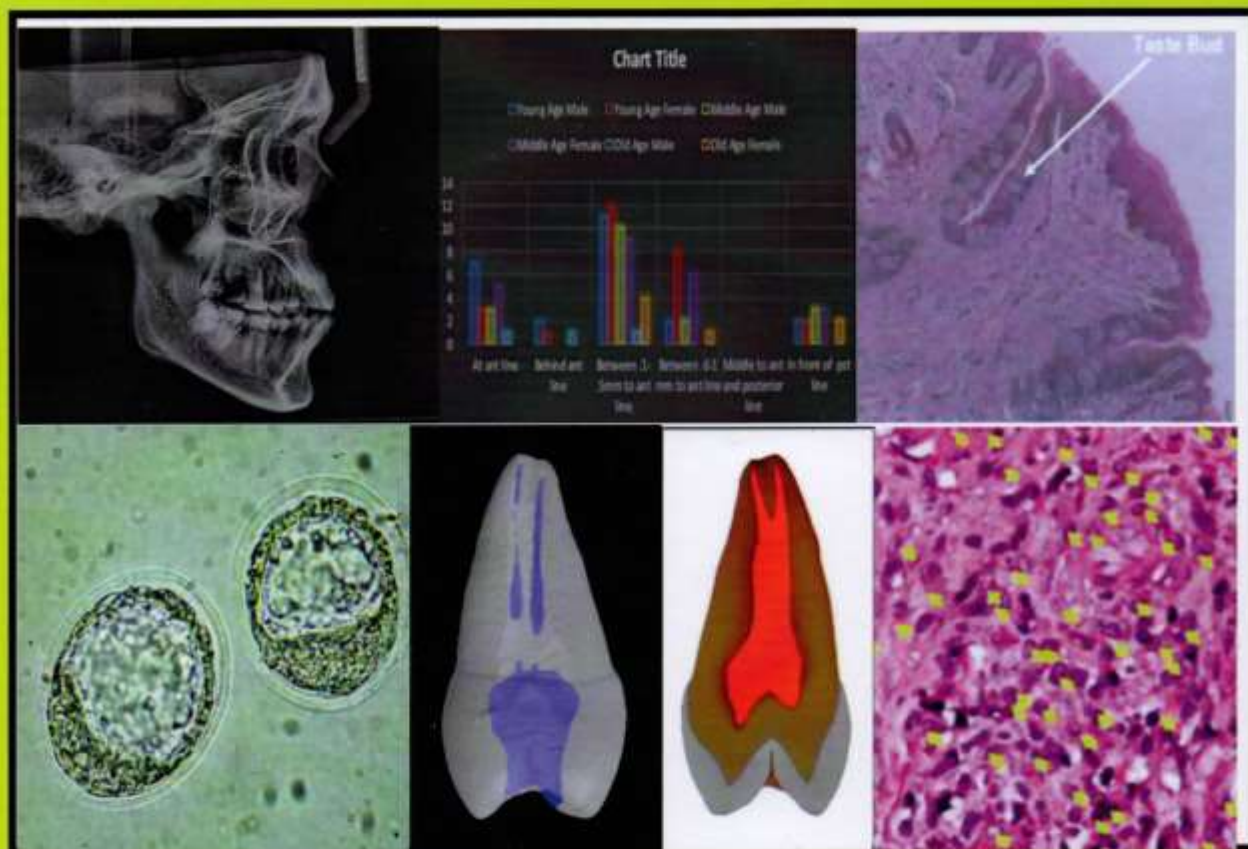


Journal of

International

Dental and Medical

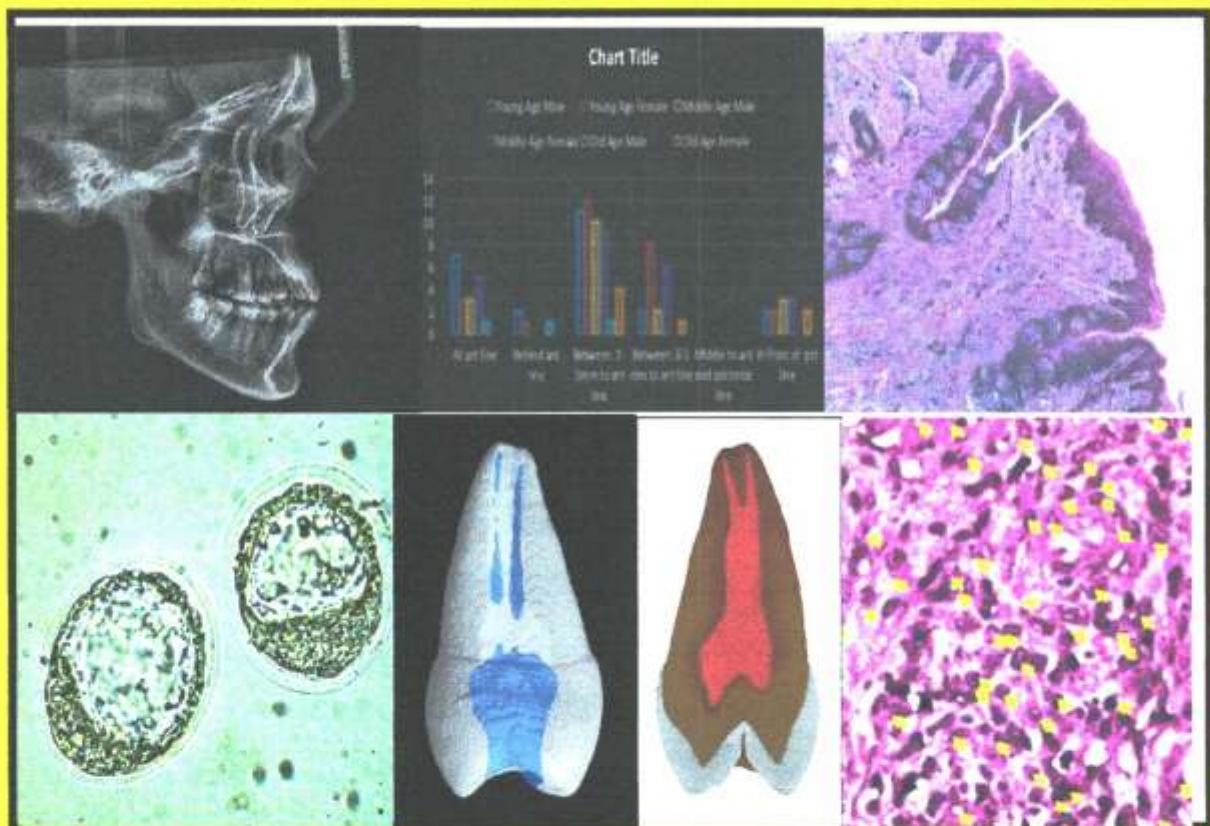
Research



2017 - Vol. 10 - No. 3

<http://www.jidmr.com>

Journal of  
International  
Dental and Medical  
Research



2017 - Vol. 10 - No. 3

<http://www.jidmr.com>



## **Journal of International Dental and Medical Research**

### **AIMS&SCOPE**

**Journal of International Dental and Medical Research, a journal of the Ectodermal Dysplasia Group-Turkey, is published 3 times per year to promote practice, education, and research specifically related to the specialty of dental and medical researchs. Manuscripts are accepted for consideration if neither the article, nor any part of its essential substance, tables, or figures has been or will be published in another journal or is simultaneously submitted to another journal. Published papers do not necessarily represent the views of the editor, the Ectodermal Dysplasia Group-Turkey.**

**The Biomedical Research (BMR) title of JIDMR is a new section for research papers from all major fields of neuroscience, biophysics, environmental sciences algology, biotechnology and pharmacology. The journal will be high quality, comprehensive, exceptionally fast and consistently peer reviewed. It will be a multi-disciplinary publication for rapid communication in Biomedical research, for the promotion of the international scientific collaboration, for presenting the achievements that emphasize clinical, fundamental and molecular aspects of biomedical studies in the all of world.**

**Fast publication will be achieved by the use of modern communication techniques. The journal features full-length papers, rapid communications and mini-reviews on selected areas.**

**Manuscript and Peer Review Submission process is by the e-mail to the [izzetyavuz@hotmail.com](mailto:izzetyavuz@hotmail.com) [izzetyavuz@jidmr.com](mailto:izzetyavuz@jidmr.com)**

**Izzet YAVUZ**

**MSc,PhD, D Ped Dent.**

**Associate Professor, Pediatric Dentistry**

**Faculty of Dentistry, University of Dicle**

**21280 Diyarbakir, TURKEY**

**Tel: +90 412 248 81 01 / 3426**

**Fax: +90 412 248 81 00**

**E-mail: [izzetyavuz@hotmail.com](mailto:izzetyavuz@hotmail.com) [izzetyavuz@jidmr.com](mailto:izzetyavuz@jidmr.com)**

**ECTODERMAL DYSPLASIA GROUP – TURKEY**

**<http://www.jidmr.com>**

**<http://www.journalofinternationaldentalandmedicalresearch.com/>**



# Journal of International Dental and Medical Research Guidelines for Authors

Manuscript and Peer Review Submission process is by the e-mail to the [izzetyavuz@hotmail.com](mailto:izzetyavuz@hotmail.com) [izzetyavuz@jidmr.com](mailto:izzetyavuz@jidmr.com)

## Introduction

*Journal of International Dental and Medical Research*, a journal of the Ectodermal Dysplasia Group-Turkey, is published three times annually [or 3 times per year] to promote practice, education, and research specifically related to the specialty of dental and medical research. Manuscripts are accepted for consideration if neither the article, nor any part of its essential substance, tables, or figures has been or will be published in another journal or is simultaneously submitted to another journal. Published papers do not necessarily represent the views of the editor, the Ectodermal Dysplasia Group-Turkey.

## Types of articles

The journal publishes full-length scientific articles not exceeding 8 printed pages (20 double-spaced 8 1/2×11-in document pages; font no smaller than 12-point Times New Roman or Arial); and clinical articles and case reports not exceeding 4 printed pages (10 double-spaced 8 1/2×11-in document pages).

Authors are encouraged to review these Instructions carefully prior to submitting their manuscripts.

## Submission of manuscripts

Submission of manuscripts to the *Journal of International Dental and Medical Research* is via e-mail, also hard copy with electronic record submissions will be accepted. Submitting authors must provide all information requested during the submission process, including: corresponding author's contact information; names, titles (such as "associate professor," "chairman,"), academic degrees (such as "DMD," "MS," "PhD,"), and affiliations of all authors; short (running) title; and 2 to 5 keywords. Honorary designations should not be included (eg, "FRCS," "FICD," "Diplomate, ABPD," etc). Authors should ensure that the keywords appear in the U.S. National Library of Medicine Medical Subject Headings, or "MeSH" (found at <http://www.nlm.nih.gov/mesh/>).

Both an UNBLINDED and BLINDED version of the manuscript must be sent to the journal. Tables and graphs should appear at the end of the main document, while photos and photomicrographs should be submitted as separate files (.jpg or .tiff format). Prior to submission, the corresponding author must guarantee that the article has not been published, and is not being considered for publication elsewhere. Submission of multi-authored manuscripts implies participation of each of the authors in the preparation of the paper. Only individuals who have made a significant contribution to the study or manuscript should be listed as authors. The efforts of others should be noted in the *Acknowledgments* section at the end of the manuscript. The corresponding author should submit the following statement: "All authors have made substantive contribution to this study and/or manuscript, and all have reviewed the final paper prior to its submission." Authors (including authors of letters to the editor) are responsible for disclosing all financial and personal relationships that might bias their work. If such conflicts exist, the authors must provide additional detail in the letter to the editor. Funding sources for the work being submitted must be disclosed in the *Acknowledgments* section of the manuscript.

## Manuscript organization



Scientific articles should be organized under the following headings: *Abstract, Introduction, Methods, Results, Discussion, Conclusions, Acknowledgments, and References.*

Titles of all papers should not exceed 15 words.

The *Introduction* section should include only pertinent references. When included for a study, the *Methods* section should be sufficiently detailed to replicate the study. The *Results* section should include only results and not discussion of the data. The *Discussion* section should discuss the results, but not repeat them. The *Conclusions* section should consist of succinct, numbered statements that are supported by the results of the study. They should not repeat the *Results* section.

**Abstracts:** All submissions must include an abstract. Abstracts should be brief providing the reader with a concise but complete summary of the paper. Generalizations such as "methods were described" should not be used. Scientific articles should have approximately 200 words

**Key Words:** Submitting authors must provide 2 to 5 keywords from <http://www.bilinterimleri.com>.

**Editorial style:** Papers will be published in English, using American spelling. Manuscripts must be submitted with proper English grammar, syntax, and spelling. Authors should express their own findings in the past tense and use the present tense where reference is made to existing knowledge, or where the author is stating what is known or concluded. Footnotes should be avoided and their content incorporated into the text. Numbers should be represented as digits; only numbers beginning a sentence should be spelled out. The editors reserve the right to revise the wording of papers in the interest of the journal's standards of clarity and conciseness.

**Units of measure:** Authors should express all quantitative values in the International System of Units (SI units)

unless reporting English units from a cited reference. Figures and tables should use SI units, with any necessary conversion factors given in legends or footnotes. All numbers should be expressed as digits, and percent values should be expressed as whole numbers. Laboratory data values should be rounded to the number of digits that reflects the precision of the results and the sensitivity of the Measurement procedure.

**Statistical tests:** The results of all statistical comparisons should be reported to include the statistical test value and the associated  $P$  value and confidence interval, if appropriate. If  $P > .01$ , the actual value for  $P$  should be expressed to 2 digits, whether or not  $P$  is significant, unless rounding a significant  $P$  value expressed to 3 digits would make it nonsignificant (eg,  $P = .049$ , not  $P = .05$ ). If  $P < .01$ , it should  $P$  be expressed to 3 digits (eg,  $P = .003$ , not  $P < .05$ ). Actual  $P$  values should be expressed unless  $P < .001$ , in which case they  $P$  should be so designated. Nonsignificant values should not be expressed as "NS." For confidence intervals, the number of digits should equal the number of digits in the point estimate. For example, for an odds ratio of 3.56, the 95% confidence interval should be reported as "1.23, 5.67," not as "1.234, 5.678."

**Tooth names:** The complete names of individual teeth should be given in full in the text of articles using the following convention: [primary/permanent] [maxillary/mandibular] [right/left] [central/lateral or first/second/third] [tooth type]. Examples: "primary maxillary right first molar," "permanent mandibular first molars," but "mandibular right second premolar." In tables these names may be abbreviated by the Universal system (A-T for primary teeth, 1-32 for permanent teeth).



**Commercially-produced Materials:** Any mention of commercially produced materials, instruments, devices, software, etc. must be followed by the name of the manufacturer and the manufacturer's location in parentheses. Example: "... in an Excel spreadsheet (Microsoft, Inc., Redmond, Wash)."

**Abbreviations:** Abbreviations should be used to make manuscripts more concise. The first time an abbreviation appears, it should be placed in parentheses following the full spelling of the term (eg, "... permanent first molars (PFMs)..."). In manuscripts using more than three abbreviations, authors should use bold typeface for the first appearance of each abbreviation.

**Permissions:** For materials taken from other sources, a written statement from the authors and publisher giving permission to *Journal of International Dental and Medical Research* for reproduction must be provided. Waivers *at risk* and statements of informed consent must accompany the manuscript when it is submitted for review. Waivers should accompany any photograph showing a human subject unless the subject's features are blocked enough to prevent identification.

**Human and Animal Subjects:** Manuscripts of research involving human or animal subjects must state in the Methods section that the study was approved by an Institutional Review Board (IRB) or other institutional research ethics committee using language similar to "... this institutionally approved study... ." IRB approval for human subjects must also be obtained if the study involved the use of tissues from humans (eg, extracted teeth), or work produced by humans (eg, systematic analyses and meta-analyses). When human subjects have been used, the text should indicate that informed consent was obtained from all participating adult subjects, and parents or legal guardians of minors or incapacitated adults. If required by the authors' institution, informed assent must be obtained from participating children at or above the age specified by the institution. The cover letter for the manuscript must contain a statement similar to the following: "The procedures, possible discomforts or risks, as well as possible benefits were explained fully to the human subjects involved, and their informed consent was obtained prior to the investigation."

**Figures:** Graphics/photos should be provided at a minimum resolution of 600 dpi as a .tif or .jpg file. Photomicrographs must include a scale labeled with a convenient unit of length (eg, 50  $\mu\text{m}$ ). Figures should be inserted at the end of the main Word document. Figures should be numbered in Arabic numerals in the order of the first citation in the text. Legends for each figure must be printed on a separate page. Include a key for symbols or letters used in the figures.

Figure legends should be understandable without reference to the text. A key for any symbols or letters used in the figure should be included. Abbreviations should be explained in a footnote to the figure. If illustrations, tables, or other excerpts are included from copyrighted works the author is responsible for obtaining written permission from the copyright holder prior to submitting the final version of the paper. Full credit must be given to such sources with a superscript reference citation in the figure legend. Reference citations in figure legends or captions should follow numerically the reference number in the text immediately preceding mention of the figure. Figures take up additional page space and should be limited to those that add value to the text.

**Tables:** Tables should be double-spaced, appear on separate pages, and should be titled and numbered in Arabic numerals in the order of the first citation in the text. Short headings should appear at the top of each column. Explanatory matter should be placed in captions, not in the title. For footnotes, use the following symbols in this sequence: \*, †, ‡, §. Tables should be understandable without alluding to the text. Due to space limitations, only tables adding value to the text should be included.



**Acknowledgments:** Funding and other sources of support must be disclosed in the *Acknowledgments* section. Personal acknowledgments should be limited to appropriate professionals who have contributed intellectually to the paper but whose contribution does not justify authorship.

**References:** References should be relevant to the material presented and identified by superscript Arabic numerals in the text.

A list of all references should appear at the end of the paper in numeric order as they are cited in the text. Journal abbreviations are those used by Index Medicus. Reference style is that used by the Journal of the American Dental Association

([http://www.ada.org/prof/resources/pubs/jada/authors/auth\\_general.asp](http://www.ada.org/prof/resources/pubs/jada/authors/auth_general.asp) as #style).

**The following are sample style references:**

**Journal:** Stephane A. Management of Congenital Cholesteatoma with Otoendoscopic Surgery: Case Report. *Turkiye Klinikleri J Med Sci* 2010;30(2):803-7.

For journals, list all authors when there are 6 or fewer, when there are 7 or more, list the first 3, then "et al." Page numbers should be elided where possible. For example: 12-8, 347-51, 191-5.

**Book:** Bixler D. Genetic aspects of dental anomalies. In: McDonald RE, Avery DR, eds. *Dentistry for the Child and Adolescent*. 5th ed. Philadelphia: CV Mosby Co;1987:90-116.

**Article, report, or monograph issued by a committee, institution, society, or government agency:** *Medicine for the public: Women's health research*. Bethesda, Md.: U.S. Department of Health and Human Services, Public Health Service, National Institutes of Health; 2001. DHHS publication 02-4971.

**World Wide Web:** Ectodermal dysplasia cases and main targets. Available at: "<http://portal.ektodermaldisplazi.com/index.phpmod=article&cat=Pedodonti>". Accessed January 21, 2008.

Authors citing material from the World Wide Web should use WebCite ([www.webcitation.org](http://www.webcitation.org)), a free service for *org* authors who wish to archive their Web references to ensure that cited Web material will remain available to readers in the future. Web citations archived on WebCite will not disappear in the future.

Authors should provide direct references to original sources whenever possible. Avoid using abstracts as references.

Avoid references to papers accepted but not yet published, if possible. If such a citation is necessary, these papers should be cited as being "in press," and verification that they have been accepted for publication must be provided.

Where possible, references of easily accessible material are preferable to dissertations, theses, and other unpublished documents. Authors should avoid citing "personal communication" unless it provides essential information not available from a public source. In those cases, the name of

the individual providing the information and the date of communication should be provided in parentheses in the text and not as a numbered reference.

Authors should obtain written permission and confirmation of accuracy from the source of a personal communication; this permission should be submitted as a supplementary document at the time of manuscript submission.

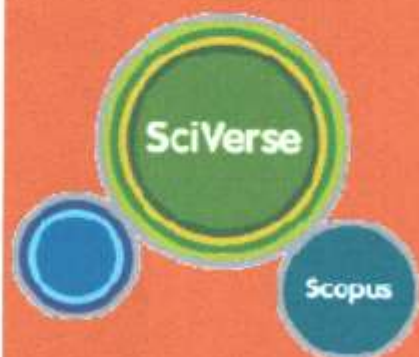
Authors should verify the accuracy of all references and are responsible for ensuring that no cited reference contains material that was retracted or found to be in error subsequent to its publication.

**Copyright:** All authors must agree to the terms of copyright transfer as indicated along with the manuscript submission process.

The Ektodermal Displazi Gurubu Türkiye owns copyright of any contribution, and its licensees have the right to use, reproduce, transmit, derivate, publish, and distribute the contribution, in the journal or otherwise, in any form or medium. Authors will not use or authorize the use of the contribution without the Ektodermal Displazi Gurubu Türkiye's written consent, except as may be allowed by world fair use law.



Indexing:







**AE GLOBAL INDEX**  
SIMPLE & CONTEMPORARY



**DENTISTRY**

- CLINICAL ARTICLE
1. Modification of Dental Age Estimation Technique among Children from Transcarpathian Region  
Myroslav Goncharuk-Khomyn  
*Pages 851-855*
- CLINICAL ARTICLE
2. Oral Health Status, Malocclusions and S. Mutans Counts in Children with Down's Syndrome  
Agim Begzati, Kastriot Meqa, Blerta Xhemali-Latifi, Teuta Kutlovci, Merita Berisha  
*Pages 856-861*
- CLINICAL ARTICLE
3. Prevalence and Evaluation of Bone Loss Pattern among Patient with Aggressive Periodontitis  
Mohd Faizal Hafez bin Hidayat, Fouad Hussain AL-Bayaty, Ihsan Bin Maidin, Mohammad Azrin Bin Abd Samad  
*Pages 862-867*
- CLINICAL ARTICLE
4. Prevalence of Oral Mucosal Lesions in Geriatric Patients Living in Lower Northern Thailand: A 10 Years Retrospective Study  
Chaidan Intapa, Chalati Chompunud Na Ayudhya, Anawat Puangsombat, Bundit Boonmoon, Thida Jaryasurin, Ubonwan Tonum  
*Pages 868-871*
- CLINICAL ARTICLE
5. Awareness and Demand of Prosthodontic Treatment for Tooth Loss Replacement  
Saraventi Mursid, Candrika Kusuma Pujnadati, Lindawati S. Kusdhary  
*Pages 872-876*
- CLINICAL ARTICLE
6. Association between Tooth Loss and Oral Awareness Amongst Dentate and Partially Dentate Subjects of Pakistani population  
Huma Sajid, Yousaf Athar, Aamina Sagheer, Nazia Yazdanie, Anam Arshad, Fazal Shahid  
*Pages 877-882*
- CLINICAL ARTICLE
7. Assessment of location of fovea palatine in relation to vibrating line in South Indian population  
Aslin Sanofer A, Revathy Gounder  
*Pages 883-886*
- CLINICAL ARTICLE
8. sCD14 Protein Analysis in Children with Very High and Low pufa Index  
Dudi Aripin, Inne Suherna Sasmita, Anne Agustina Suwargiani  
*Pages 887-890*
- CLINICAL ARTICLE
9. Microbiological and cytological response to dental implant healing abutment  
Wifaq M. Ali Al-Wattar, Warkaa M. Al-Wattar, Afya Sahib Diab Al-Radha  
*Pages 891-898*
- CLINICAL ARTICLE
10. Tooth Mortality in Concurrent Cigarettes Smoking and Khat Chewing in Yemeni Population  
Fouad Hussain Al- Bayaty, Nidhal Wahid Ali, Aqil Daher, Saba F. Hussain, Mohd Masood  
*Pages 899-904*



- CLINICAL ARTICLE
11. The Correlation between Mother's Knowledge and Parenting Toward Childhood Caries in the Remote Area  
Leny Marlina A. Pinat, Darmawan Setijanto, Taufan Bramantoro  
Pages 905-908
- CLINICAL ARTICLE
12. Gingival Recession and Dentine Hypersensitivity in Periodontal Patients: is It Affecting Their Oral Health Related Quality of Life?  
Masud M, Al-Bayaty FH, Muhamed NAH, Alwi AS, Takiyudin Z, Hidayat MFH  
Pages 909-914
- CLINICAL ARTICLE
13. Prevalence of Medically Compromised Children Regarding Dental Caries and Treatment Needs in Wahidin Sudirohusodo Hospital  
Harun Achmad, M. Hendra Chandha, Sri Harun, Imam Sudjarwo, Muliaty Yunus, Rahmah K. Rusdi, Putri Khairunnisa  
Pages 915-920
- CLINICAL ARTICLE
14. Relationship between Oral Health Status with Knowledge, Attitude, And Behavior of Elementary School Children  
Fuad Husain Akbar, Rini Pratiwi, Reagan Cendikiawan  
Pages 921-926
- CLINICAL ARTICLE
15. The Oral Health of Elderly Residents in a State Institution in Jakarta: A Preliminary Study  
Dwi Ariani, Febrina Rahmayanti, Harum Sasanti, Masita Mandasari  
Pages 927-932
- CLINICAL ARTICLE
16. Pandan Leaves (*Pandanus Amaryllifolius*) Aromatherapy and Relaxation Music to Reduce Dental Anxiety of Pediatric Patients  
Seno Pradopo, Betadion Rizki Sinaredi, Bernadeth Vindi Januarisca  
Pages 933-937
- CLINICAL ARTICLE
17. The Relation of Follicle Stimulating Hormone and Estrogen to Mandibular Alveolar Bone Resorption in Postmenopausal Women  
Susi R Puspitadewi, Pitu wulandari, Sri Lelyati C Masulili, Elza I Auerkari, Hanna Bachtiar Iskandar, Izzet Yavuz, Lindawati S Kusdhary  
Pages 938-944
- CLINICAL ARTICLE
18. Cross-Cultural Adaptation and Psychometric Properties of The Indonesian Version of Servqual For Assessing Oral Health Service Quality  
Yohanes Tebai, Diah Ayu Maharani, Anton Rahardjo  
Pages 945-951
- EXPERIMENTAL ARTICLE
19. Effect of Endodontic Instrumentation Technique on Root Canal Geometry  
Miranda Stavilec, Veton Hoxha, Mehmet Ömer Görduysus, Kjell Laperre, Ilkan Tatar, Rina Hoxha  
Pages 952-957

TABLE OF CONTENTS / 2017: 10 (3)

- EXPERIMENTAL ARTICLE
20. No Recombinant EGF and bFGF is Required on HUVECs Culture Supplemented with Human Platelet Lysate  
Lisa Rinanda Amir, Ria Puspitawati, Hazriani R, Shafira Imanina, Harvi Damayanti, Nadira Dwiyan, Afridayanti Nurwulan, Mindya Yuniastuti, Erik Idrus  
Pages 958-963
- EXPERIMENTAL ARTICLE
21. The Effect of Light and Dual Cured Resin Cement to the Color of Porcelain Laminate Veneer  
Melissa Delania, Ira Tanti, Roselani W. Odang, Leonard C. Nelwan  
Pages 964-969
- EXPERIMENTAL ARTICLE
22. Loss of Taste Buds in The Circumvallate Papillae of Rat Tongue after Ovariectomy  
Ervin Rizali, Widurini Djaja Suminta, Budiharto Sudiroatmodjo, Nadhira Haifa Prabowo, Elza Ibrahim Auerkari  
Pages 970-974
- EXPERIMENTAL ARTICLE
23. The Effect of Brotowali Stem Extract (*Tinospora Crispa*) Towards Increasing Number of Lymphocytes in the Healing Process of Traumatic Ulcer on Diabetic Wistar Rat  
Ira Arundina, Indeswati Diyatri, Theresia Indah Budhy, Foo Yau Jit  
Pages 975-980
- EXPERIMENTAL ARTICLE
24. Antibacterial Effects of Bioceramic and Mineral Trioxide Aggregate Sealers Against *Enterococcus Faecalis* Clinical Isolates  
Rusdiana, Muryati Usman, Ratna Meidyawati, Endang Suprastiwi, Dewa Ayu NPA  
Pages 981-986
- EXPERIMENTAL ARTICLE
25. Different Food Hardness Affect Memory  
Wahyuning Ratih Irmalia, Jenny Sunariani, Christian Khoswanto  
Pages 987-990
- EXPERIMENTAL ARTICLE
26. Brotowali Extract (*Tinospora Crispa*) for Oral Traumatic Ulcer in Diabetes Mellitus Wistar Rat  
Retno Indrawati Roestamadji, Ira Arundina, Indeswati Diyatri, Dewi Tamara Sambodo, Wahyuning Ratih Irmalia  
Pages 991-996
- EXPERIMENTAL ARTICLE
27. Orthodontists Reproducibility and Accuracy in Linear and Angular Measurement on 2d Digital and 3d Cbct Radiographic Examination  
Dwita Pratiwi, Benny Mulyono Soegiharto, Krisnawati, Brama Kiswanjaya  
Pages 997-1004
- CASE REPORT
28. Reconstruction with fibula transfer and implant supported overdenture for a mandibular defect: A multidisciplinary approach  
Tri Ardi Mahendra, Nina Ariani, Saraventi Mursid, Parintosa Atmodiwirjo, Kristarinta Bangun, Dwi Ariawan  
Pages 1005-1009
- CASE REPORT
29. An Overjet Reduction of Class II, Division 1 Malocclusion in Twin Block Dentofacial Orthopedic and Fixed Orthodontic Treatment: Case Report  
Harun Achmad, Mardiana Adam, Sri Oktawati, Sri Ramadhany Karim, Hasanuddin Thahir, Rini Pratiwi, Annisa Wicita  
Pages 1010-1016



TABLE OF CONTENTS / 2017; 10 (3)

CASE REPORT

- 30. Impact of Delay on Diagnosis and Treatment of Oral Squamous Cell Carcinoma: Three Cases Report**  
Hamdatun Rakhmania, Irma Sufiawati  
*Pages 1017-1020*
- 31. The Promising Clinical Applications of Growth Factors in Periodontal Regeneration: A Literature Review**  
Ichaya Yiemwattana  
*Pages 1021-1028*
- 32. Role of Oral and Maxillofacial Surgeon in Detecting Domestic Violence**  
Anand Deep Shukla, Abhay T Kamath, Chithra A  
*Pages 1029-1031*
- 33. A Review of Ribonucleotide Reductase and Cancer Therapies**  
Khor Goot Heah, Nurul Ain Bt Khoruddin, Nur Rawaidah Bt Mohd Shobri, Syairah Nabila Bt Suhaimi, Tang Thean Hock, Mohd Yusmaidil Putera Mohd Yusof  
*Pages 1032-1037*

MEDICINE

- 34. Digital Hematocrite Test, a New Breakthrough in the Medical Equipment for Non Invasive Hematocrite Level Measurement in Dengue Patients**  
Prihartini Widiyanti, Nasronudin  
*Pages 1038-1041*
- 35. Bone Quality, Biochemical and Blood Markers in High Power Electrical Workersf**  
Cemil SERT, Pelin YAZGAN  
*Pages 1042-1047*
- 36. The Relation of Reflux Finding Score and Reflux Symptom Index with Middle Ear Pepsin Level in Chronic Suppurative Otitis Media**  
Ayu Astria Sriyana, Susyana Tamin, Syahrial M. Hutahuruk, Saptawati Bardosono, Ina S. Timan, Ratna D. Restuti  
*Pages 1048-1051*
- 37. Occupational Risk Factors for Acute Fatigue Symptoms among Indonesian Beverage Industry Workers**  
Balduri Widanarko, Robiana Modjo  
*Pages 1052-1054*
- 38. A Study of Readmission Rates and the Implementation of National Health Insurance**  
Kurnia Sari, Pujiyanto, Atik Nurwahyuni, Atmiroseva  
*Pages 1055-1059*
- 39. Protective Effect of Propolis Extract in Kidney Male Mice (Mus musculus) Induced by Lead Acetate**  
Citrasari Henra, Wiwik Misaco, Hani Plumeriastuti  
*Pages 1060-1065*

TABLE OF CONTENTS / 2017; 10 (3)

- EXPERIMENTAL ARTICLE
40. Maturity and Apoptosis Rate of Cumulus - Oocyte Complex in Aceh Cattle after in Vitro Maturation  
Hamny Hamny, Widjiati Widjiati, Aulanni'am Aulanni'am, Budiarto Panjaitan  
Pages 1066-1069
- EXPERIMENTAL ARTICLE
41. Hylocereus Polyrhizus Peel Ethanol Extract- The Potential Effect to Tumor Necrosis Factor- $\alpha$ , Macrophage, and Matrix Metalloproteinase-9 in Endometriosis Mice  
Anindya Hapsari, Hendy Hendarto, Widjiati  
Pages 1070-1073
- EXPERIMENTAL ARTICLE
42. Effect of Combined Cryoprotectant of Ethylen Glicol and Propanodiol on Embryo Cryopreservation to Blastomere Cell Apoptosis and Blastocyst Quality  
Epy Muhammad Luqman, Widjiati, Suryo Kuncorojakti  
Pages 1074-1079
- EXPERIMENTAL ARTICLE
43. Effectivity of Insulin Transferrin Selenium and Bovine Serum Albumin Addition on In Vitro Culture Medium on Fertilization and Blastocyst Rate of Mice (*Mus musculus*)  
Widjiati, Epy Muhammad Luqman, Benjamin Christoffel Tehupuring  
Pages 1080-1083
- REVIEW
44. Effect of Radiofrequencies Emitted from Mobile Phones and Wi-Fi on Pregnancy  
Hava Bektas, Suleyman Dasdag  
Pages 1084-1095



## Hylocereus Polyrhizus Peel Ethanol Extract- the Potential Effect to Tumor Necrosis Factor- $\alpha$ , Macrophage, and Matrix Metalloproteinase-9 in Endometriosis Mice

Anindya Hapsari<sup>1</sup>, Hendy Hendarto<sup>2</sup>, Widjiati<sup>3\*</sup>

1. Faculty of Sport Science. Universitas Negeri Malang, Malang, Indonesia and Posgraduate student of Reproductive Health Science, Faculty of Medicine Universitas Airlangga Surabaya-Indonesia.
2. Department of Obstetry and Gynecology, Faculty of Medicine Universitas Airlangga. Surabaya-Indonesia.
3. Department of Embriology, Faculty of Veterinary Medicine Universitas Airlangga. Surabaya-Indonesia.

### Abstract

On endometriosis, macrophage and TNF- $\alpha$  was found in higher concentration. Tumor Necrosis Factor- $\alpha$  activates NF- $\kappa$ B pathway and increase the expression of MMP-9's gen. NF- $\kappa$ B pathway can be blocked by Hylocereus polyrhizus peel.

The objective of this study was to know the effect of Hylocereus polyrhizus peel ethanol extract at dose 0,25; 0,5 mg/gram BW/day; and 1 mg/gram on TNF- $\alpha$  concentration, number of macrophage, and MMP-9 expression on mouse model of endometriosis.

This study was a laboratory experimental research. Thirty female mice were used as samples and divided into 5 groups: 1 positive control, 1 negative control, and 3 treatment groups. Positive control and treatment groups were induced as model of endometriosis for 14 days. The next 14 days, Na-CMC 0,5% was given to both control groups, while Hylocereus polyrhizus peel ethanol extract dose 0,25; 0,5 mg/gram BW/day; and 1 mg/gram were given to treatment groups orally. Peritoneum fluid and endometriosis lesion were examined.

There were significantly differences on TNF- $\alpha$  concentration ( $p=0.021$ ), number of macrophage ( $p=0.00$ ), and MMP-9 expression ( $p=0.002$ ) among control groups and treatment groups. TNF- $\alpha$  concentrations were higher on treatment groups.

Hylocereus polyrhizus peel ethanol extract can be used as alternative therapy for attenuating the alteration of macrophage and MMP-9 in endometriosis disease.

**Experimental article (J Int Dent Med Res 2017; 10(3): pp. 1070-1073)**

**Keywords:** Hylocereus polyrhizus peel ethanol extract, endometriosis, TNF- $\alpha$ , macrophage, MMP-9.

**Received date:** 05 August 2017

**Accept date:** 11 September 2017

### Introduction

Endometriosis is defined as the presence of endometriosis-like tissue outside the uterus, which induces a chronic inflammatory reaction.<sup>1</sup> The prevalence of endometriosis in the population is difficult to determine but estimates between 2 to 10% within the female population while 50% in infertile women. Most women with endometriosis experience painful symptoms thus infertility.<sup>2</sup> Management of endometriosis can be divided into empirical treatments and surgery. However, the recurrence rate after treatment is

higher, about 35% in mild endometriosis and 74% in severe endometriosis.<sup>3</sup> The high recurrence rate due to endometriosis is a progressive disease and needed long-time treatment.<sup>4</sup>

### Materials and methods

This study has been received approval ethical clearance letter of animal subjects from Faculty of Veterinary Medicine Universitas Airlangga with number 710-KE. This study was a laboratory experimental research. Thirty female

mice (*Mus musculus*), aged 2-3 months, weighing 20-25 gram, were used as samples.

**\*Corresponding author:**

Dr. Widjati, M.Sc., DVM., This study was conducted in Faculty of  
Veterinary Medicine Universitas Airlangga from U  
E-mail: widjati@fkh.unair.ac.id; anindya.hapsari.fik@um.ac.id

June to July 2017.

control group (K1), negative control group (K2), treatment group with *Hylocereus polyrhizus* peel ethanol extract dose 0,25 mg/gram BW/day (K3), treatment group with *Hylocereus polyrhizus* peel ethanol extract dose 0,5 mg/gram BW/day (K4), and treatment group with *Hylocereus polyrhizus* peel ethanol extract dose 1 mg/gram/day (K5). Positive control and treatment groups were induced as model of endometriosis by this following steps: 1) injection of cyclosporin A (0,2 ml/mice) intramuscular on day one to make mice in immunodeficiency state. Cyclosporin A was purchased from Sandimmun (North Ryde, Australia); 2) injection of *ethinyl estradiol* 20.000 IU (0,1 ml/mice) on day one and five; 3) injection of implant tissue (0,1 ml/mice) in the peritoneal cavity on day one. Implant tissue is derived from the myometrium and endometrium of gynecologic benign tumor patient who underwent surgery procedure and didn't use hormonal contraception at least for last 3 months before surgery. The animal model was observed for 14 days to be the mice model of endometriosis.

Starting from 15<sup>th</sup> day, Na-CMC 0,5% (Clorogreen Gemilang<sup>TM</sup>, Bandung, Indonesia) was given to both control groups as placebo. *Hylocereus polyrhizus* peel ethanol extract dose 0,25 mg/gram BW/day was given to group K3, *Hylocereus polyrhizus* peel ethanol extract dose 0,5 mg/gram BW/day was given to group K4, and *Hylocereus polyrhizus* peel ethanol extract dose 1 mg/gram/day was given to group K5. These placebo and extract was administered orally (0,2 ml/25 mg/gram BW/day) for 14 days with an oral gavage.

At the end of experiment, mice were anesthetized with ketamin (Ketamin Hydrochloride Pfizer®, New Jersey, USA) and acepromazine (Castran®, Venray, Holland). Peritoneal fluid samples were obtained by peritoneum puncture to examine TNF- $\alpha$  concentration using Enzyme Linked Immunosorbent Assay kit (Elabscience<sup>TM</sup>, Wuhan, China), then endometriosis lesions in peritoneum cavity were collected. Formalin-fixed,

After adaptation for a week, female mice then divided into 5 groups, which are: positive paraffin-embedded tissue sections from endometriosis lesion were tested by immunohistochemistry to see MMP-9 expressions (Bioss Antibody Incorporation<sup>TM</sup>, Massachussets, USA). The other tissue sections from endometriosis lesion were tested by Hematoxyllin Eosin (HE) staining (DAKO<sup>TM</sup>, California, USA) to count macrophages on the lesions. The number of macrophages from 5 field-view then categorized by Klopfleisch scoring system. This score criterias are: 0 if there was no macrophage infiltration, 1 if there were less than 10 macrophage infiltration, 2 if there were 11-50 macrophage infiltration, 3 if there were 51-100 macrophage infiltration, and 4 if there were more than 100 macrophage infiltration.<sup>13</sup>

Matrix Metalloproteinase-9 expressions were analyzed using modified Remmele and Stegnes semiquantitative scoring system (1986). This Immuno Reactive Score (IRS) is a result from multiplication between immunoreactive cells procentage (A) and colour intensity score on immunoreactive cells (B). Datas were collected from 5 field-view. The immunoreactive cells score criterias (A) are: 0 if there was no positive cell, 1 if procentage of positive cells was less than 10%, 2 if procentage of positive cells was 11-50%, 3 if procentage of positive cells was 51-80%, and 4 if procentage of positive cells was more than 80%. While colour intensity score (B) criterias are: 0 if there was no colour reaction, 1 if the intensity of colour is low, 2 if the intensity of colour is average, and 3 if the intensity of colour is high.<sup>14</sup>

Shapiro Wilk test was used to know the normality of data and Levene test was used to know the homogeneity of data. If distribution and homogeneity of data were normal ( $p > 0.05$ ), One Way Anova test was conducted, followed with posthoc Bonferroni, but, if the data distribution or homogeneity wasn't normal, Kruskall-Wallis test followed with Mann Whitney test, were conducted. Analysis was performed with IBM SPSS Statistics versions 24.00 (New York, USA).



## Results

Result showed that there were *mean* differences among K1, K2, K3, K4, and K5 groups, as seen on table 1.

$\bar{x} \pm SD$ TNF- $\alpha$ Concentration					
	K1	K2	K3	K4	K5
TNF- $\alpha$	18.60 $\pm$ 0.31	19.63 $\pm$ 0.26	20.05 $\pm$ 1.23	20.49 $\pm$ 1.84	19.55 $\pm$ 0.75

**Table 1.** TNF- $\alpha$  Concentration on Mice Model Endometriosis Among Control Groups and Treatment Groups.

The level of TNF- $\alpha$  concentration was higher in the endometriosis model groups (K2, K3, K4, and K5) compared to the negative control group (K1). All doses of *Hylocereus polyrhizus* peel ethanol extract also have higher level of TNF- $\alpha$  concentration compared to K1.

Statistical analysis was conducted by One Way Anova test with  $p=0.021$ , that means there was significantly differences among groups. Posthoc Bonferroni test showed that there were significantly differences between K1 and K4.

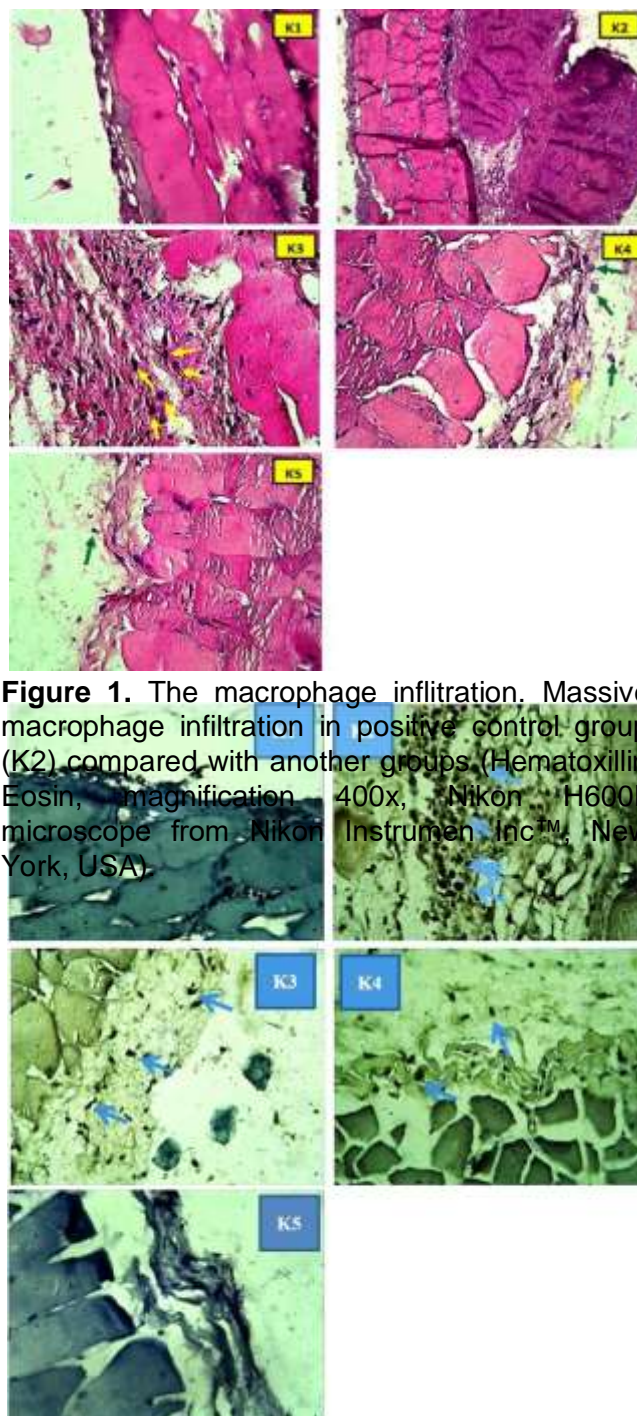
Result showed that there were *mean* differences among K1, K2, K3, K4, and K5 groups, as seen on table 2. The numbers of macrophage were decreased on treatment groups. This reduction was linear with the increasing of *Hylocereus polyrhizus* peel ethanol extract doses. Statistical analysis was conducted by Kruskal Wallis test with  $p=0.000$ , that means there was at least 1 significantly differences between 2 groups. Mann Whitney test showed that there were significantly differences between: K1 and K2, K1 and K3, K1 and K4, K2 and K3, K2 and K4, K2 and K5, and K3 and K5.

$\bar{x} \pm SD$ Number of Macrophage					
	K1	K2	K3	K4	K5
Macrophage	0.20 $\pm$ 0.45	4 $\pm$ 0	3.20 $\pm$ 0.45	3 $\pm$ 0	1.80 $\pm$ 1.10

**Table 2.** Number of Macrophage on Mice Model Endometriosis Among Control Groups and Treatment Groups.

$\bar{x} \pm SD$ MMP-9 Concentration					
	K1	K2	K3	K4	K5
MMP-9	1.12 $\pm$ 0.867	6.16 $\pm$ 0.829	3.64 $\pm$ 0.817	2.28 $\pm$ 0.743	1.56 $\pm$ 1.633

**Table 3.** Matrix Metalloproteinase-9 on Mice Model Endometriosis Among Control Groups and Treatment Groups.



**Figure 1.** The macrophage infiltration. Massive macrophage infiltration in positive control group (K2) compared with another groups (Hematoxylin Eosin, magnification 400x, Nikon H600L microscope from Nikon Instrumen Inc™, New York, USA).

**Figure 2.** The MMP-9 expression (blue arrow). MMP-9 expression in positive control group (K2) was the strongest among another groups (immunohistochemistry, magnification 1000x, Nikon H600L microscope from Nikon Instrumen Inc™, New York, USA).

Result showed that there were *mean* differences among K1, K2, K3, K4, and K5 groups, as seen on table 3, figure 1, 2.

The MMP-9 expressions were decreased on treatment groups. This reduction was linear with the increasing of *Hylocereus polyrhizus* peel ethanol extract's doses. Statistical analysis was conducted by Kruskal Wallis test with  $p=0.002$ , that means there was at least 1 significantly differences between 2 groups. Mann Whitney test showed that there were significantly differences between: K1 and K2, K1 and K3, K2 and K3, K2 and K4, K2 and K5, and K3 and K4.

## Discussion

The result of this study showed that *Hylocereus polyrhizus* peel ethanol extract was able to reduce the number of macrophage and MMP-9 expression on mice model endometriosis. But, the extract wasn't able to reduce TNF- $\alpha$  concentration.<sup>10</sup> *Hylocereus polyrhizus* peel ethanol extract which contain betalain, were given to mice model endometriosis to inhibit NF $\kappa$ B pathway, which is activated by macrophage and endometriosis cells when these cells bind to their receptors.<sup>15,16</sup>

By blocking NF- $\kappa$ B pathway, it was supposed that the genes expression of TNF- $\alpha$ , MMP-9, and MCP-1 reduced. This study result presented that the secretion of TNF- $\alpha$  by macrophage wasn't reduced. This may because the production of TNF- $\alpha$  by macrophage isn't only through NF- $\kappa$ B pathway<sup>16,17</sup>. There is possibility that TNF- $\alpha$  can be produced through MAPK (mitogen-activated protein kinase) pathway.<sup>19,20</sup> So that, although the extract inhibited NF- $\kappa$ B pathway, the production of TNF $\alpha$  was still high through MAPK pathway.

This study also presented that MMP-9 and number of macrophage were significantly greater in the positive control group compared to other groups. These increased levels of MMP-9 in mice model endometriosis were significantly reduced by 0,5 mg/gram BW/day and 1 mg/gram administration of *Hylocereus polyrhizus* peel ethanol extract to those comparable to the negative control group. Administration of *Hylocereus polyrhizus* peel ethanol extract dose 1 mg/gram also can reduce the number of macrophage to those comparable to the negative control group.

## Conclusions

The conclusion of this study was *Hylocereus polyrhizus* peel ethanol extract can be used as alternative therapy for attenuating the alteration of macrophage and MMP-9 in endometriosis disease.

## Acknowledgements

The authors wish to thank Djoko Legowo, DVM, M.Sc for help with the interpretation of histology.

## Declaration of Interest

The authors declare no conflict of interest.

## References

1. Management of Women with Endometriosis Guideline of the European Society of Human Reproduction and Embriology. European Society of Human Reproduction and Embriology. ESHRE Endometriosis Guideline Development Group. 2013.
2. Hendarto H. Endometriosis From Theory Aspects To Clinical Management. Surabaya:Airlangga University Press. 2015.
3. Speroff L, Fritz MA. Endometriosis in Clinical Gynecologic Endocrinology and Infertility 7<sup>th</sup> Edition. Philadelphia:Lippincott William and Wilkins. 2005.
4. Annas JY, Hendarto H, Widjiati. The Effect of Curcumin in Various Doses to Endometriosis Progressivity in Mice Model Endometrios. Obstetry and Gynaecologic Magazine. 2014;22(3):118-8.
5. Oepomo TD. Tumor Necrosis Factor- $\alpha$  Concentration on Peritoneal Fluid of Endometriosis Patients. Biotechnology. 2006;2(2):54-4.
6. Yeniel AO, Erbas O, Ergenoglu, AM, "et al." Effect Of Oxytocin Treatment On Explant Size, Plasma, and Peritoneal Levels of



- MCP-1, VEGF, TNF- $\alpha$ , and Histopathological Parameters In A Rat Endometriosis Model. *European Journal of Obstetrics and Gynecology and Reproductive Biology*. 2014;175:134-6.
7. Grund EM, Kagan D, Tran CA, "et al." Tumor Necrosis Factor- $\alpha$  Regulates Inflammatory and Mesenchymal Responses via Mitogen-Activated Protein Kinase, p38, and Nuclear Factor- $\kappa$ B in Human Endometriotic Epithelial Cells. *Molecular Pharmacology*. 2008;73(5):1394-11.
  8. Liu H, Wang J, Wang H, "et al." Correlation Between Matrix Metalloproteinase-9 and Endometriosis. *International Journal Clinical Pathology*. 2015;8(10):13399-6.
  9. Gonzalez-Ramos R, Defrere S., Devoto L. Nuclear Factor $\kappa$ B: A Main Regulator Of Inflammation and Cell Survival In Endometriosis Pathophysiology. *Fertility and Sterility*. 2012;98(3):520-8.
  10. Sarasmita MA, Laksmiani NPL. The Cytotoxicity Effect of *Hylocereus polyrhizus* Peel Ethanol Extract on Carcinoma Mammae Cells *Invitro* and *Insilico*. *Udayana Pharmacy Journal*. 2015;4(2):91-7.
  11. Nurliyana SZ, Suleiman IMK, Aisyah MR, Rahim KR. Antioxydant Study Of Pulp And Peels Of Dragon Fruits : A Comparative Study. *International Food Research Journal*. 2010;17:367-9.
  12. Wybraniec S, Nowak-Wydra B, Mitka K. Minor Betalain in Fruit of *Hylocereus* species. *J Phytochem*. 2007;68:251-9.
  13. Klopffleisch R. Multiparametric and semiquantitative scoring systems for the evaluation of mouse model histopathology - a systematic review. *Veterinary Research*. 2013;9:123.
  14. Nowak M, Janusz M, Dziegiel P. Intensity of COX2 Expression in Cells of Soft Tissue Fibrosarcomas in Dogs as Related to Grade of Tumour Malignancy. *Bull vet Ins Pulawy*. 2007;5:275-5.
  15. Martinez RM, Longhi-Balbinot DT, Zarpelon AC, "et al." Antiinflammatory Activity of Betalain-Rich Dye of *Beta vulgaris*: Effect on Edema, Leucocyte Recruitment, Superoxide Anion, and Cytokine Production. *Archives of Pharmacal Research*. 2014;38:494-11.
  16. Capobianco A, Rovere-Querini P. Endometriosis, A Disease Of The Macrophage. *Frontiers in Immunology*. 2013;4(9):1-14.
  17. Bruggen T, Nijenhuis S, Raaij E, Verhoef J, Sweder B, Asbeck. Lipopolysaccharide-Induced Tumor Necrosis Factor Alpha Production by Human Monocytes Involves the Raf-1/MEK1/MEK2/ERK1-ERK2 Pathway. *Infection and Immunity*. 1999;67(8):3824-6.
  18. Dumitru CD, Ceci JD, Tsatsanis C, "et al." TNF- $\alpha$  Induction by LPS Is Regulated Posttranscriptionally via a Tpl2/ERK-Dependent Pathway. *Cell*. 2000;103:1071-13.
  19. Setyadewi W., Oki A.S., Sunariani J. Moderate Intensity Physical Exercise Effect on PMN and Macrophage Expression in *Rattus Norvegicus* Post Tooth Extraction. *Journal of International Dental and Medical Research*. 2016;9(1):364-367.
  20. Ismaili B., and Bokonjic D. Short-Term Low-Level Laser Therapy Attenuates Inflammation and Production of Interleukin1, but Elevates the Level of Matrix Metalloproteinase 9 in Chronic Periodontitis. *Journal of International Dental and Medical Research*. 2014;7(1)7-13.