

The Expression of TLR-2 and NOD-2 in Gingival Epithelium of Rat After Probiotic *Lactobacillus reuteri* Supplementation to Inhibit *Streptococcus mutans* Growth.

by Retno Indrawati.,drg

Submission date: 18-Jun-2018 09:30AM (UTC+0800)

Submission ID: 976500156

File name: teri_Supplementation_to_Inhibit_Streptococcus_mutans_Growth..pdf (561.17K)

Word count: 3519

Character count: 19468

THE EXPRESSION OF TLR-2 AND NOD-2 IN GINGIVAL EPITHELIUM OF RAT AFTER PROBIOTIC *Lactobacillus reuteri* SUPPLEMENTATION TO INHIBIT *Streptococcus mutans* GROWTH

Tuti Kusumaningsih^{1*}, Subijanto Marto Sudarmo², Retno Indrawati¹, Rini Devijanti Ridwan¹, and Sidarningsih¹

¹Department of Oral Biology, Faculty of Dentistry, Airlangga University, Kampus A Unair, Jl.Mayjen.Prof.Moestopo No.47 Surabaya 60132. Indonesia

²Department of Pediatrics, Faculty of Medicine Airlangga University, Kampus A Unair, Jl.Mayjen Prof.Moetopo No.47 Surabaya 60132. Indonesia

ABSTRACT

Lactobacillus reuteri is probiotic from Gram positive bacteria which has specific molecular structure, consisted of peptidoglycan (PG) and lipoteichoic acid (LTA). These structure have potential in pattern recognition receptors (PRRs) activation, such as TLR-2 and NOD-2 that are the up stream of beta defensin-2 (BD-2) signaling cascade. BD-2 is antimicrobial peptides naturally produced in mouth cavity that can against *Streptococcus mutans* effectively. This study was aimed to prove that probiotic *L. reuteri* supplementation can increase the expression of TLR-2 and NOD-2 in gingival epithelium. Experimental design in this study was randomized control group post test only design. Study was carried on 24 white rat (*Rattus norvegicus*) Wistar strain which divided into 4 groups. Positive control was rats that induced with *S. mutans*, while rats in negative control group were not induced. Group I was rats that supplemented with *L. reuteri* for 14 days (day 1-14) and induced with *S. mutans* for 7 days (day 8-14). Group II was rats that supplemented with *L. reuteri* and induced with *S. mutans* simultaneously for 14 days (day 1-14). Concentration of bacterial suspension was 10⁸ cfu/ml for *L. reuteri* and 10¹⁰ cfu/ml for *S. mutans*. Both of these two bacteria was given orally to rats. TLR-2 and NOD-2 expressions were evaluated with immunohistochemistry technique. Significant differences of protein expression between each treatment group was analyzed with ANOVA (p=0.001). TLR-2 and NOD-2 expressions were higher than negative control. It can be concluded that *L. reuteri* supplementation as probiotic could increase the expression of TLR-2 and NOD-2 in gingival epithelium of rat.

Keywords: Probiotic, *L. reuteri*, TLR-2, NOD-2, caries, *S. mutans*

INTRODUCTION

Dental caries remain as national issue in Indonesia nowadays. According to National Basic Health Research institution (Riskesdas) of Indonesia Ministry of Health, 76% of children in East Java have been diagnosed with dental caries. There were several efforts have been done in order to prevent dental caries such as chemoprophylactic agents utilization, dental health education (DHE), and vaccine formulation in animal models (Fu Chen and Dong Wang, 2010). However, there were no effective resulted from these efforts.

Bacteria that form biofilm in dental plaque become more resistance, including to flour and chlorhexidine (Scheie, 2004). This condition has encouraged people

prefer natural treatment such as probiotic consumption for balancing the normal flora inside body. World Health Organization (WHO) defined probiotic as live microorganism, which, when administered in adequate amounts, confer a health benefit to the host (Wallace et al., 2011).

The etiology of dental caries was multifactorial. There are 3 main factors that cause dental caries, carbohydrate diet (especially sucrose), *S. mutans* infection, and specific response from host (innate immunity) (Tao et al., 2005). One of component of innate immunity is antimicrobial peptides (AMP) that keep body in homeostasis (Abbas et al., 2010). The first identified antimicrobial peptide in oral cavity is beta defensin (BD) that can be found as small peptide in gingival epithelium, buccal mucosa, saliva gland, saliva ductus, and saliva (Dale et al., 2006; Gursoy and Kononen, 2012). There are 3 kind of beta defensin (BD) that secreted by oral keratinocyte in different conditions. Beta defensin-1 (BD-1) will expressed constitutively in by oral keratinocytes, while BD-2 and BD-3 are expressed when there is stimulation by bacterial antigen product and proinflammatory stimuli such as interleukin I β (IL-

* Corresponding Author:

Tuti Kusumaningsih
Department of Oral Biology, Faculty of Dentistry, Airlangga University, Kampus A Unair, Jl.Mayjen.Prof.Moestopo No.47 Surabaya 60132. Indonesia
phone : 08123235143/031-8722715
e-mail : tutikusumaningsih@yahoo.com

IFN- β), tumor necrosis factor α (TNF- α) and interferon- γ (IFN- γ) (Yoshihiro et al., 2003).

L. reuteri is commensal bacteria which means it is an excellent inducer for BD-2 (Dale and Fredericks, 2007). There are 2 species of bacteria that have been known as main dental caries cause, *Streptococcus mutans* and *Streptococcus sobrinus*. Both of these two bacteria are sensitive to BD-2 (Nishimura et al., 2004). There is specific structure in cell wall of probiotic bacteria that called as microorganism-associated molecular patterns (MAMPs). It can be found as peptidoglycan (PG) or lipoteichoic acid (LTA) that will be recognized by pattern recognition receptors (PRRs) (Lebeer et al., 2010). The interaction of MAMP and PRR will induce the activation of nuclear factor- κ B (NF- κ B) signaling cascade as the inhibitor of NF- κ B kinase (I κ BK) and mitogen-activated protein kinase (MAPK).

There are some factors that can induce BD-2 activation specifically, such as TLR-2 and NOD-2 as the upstream of BD-2 signaling cascade. Toll-like receptors (TLRs) are transmembrane proteins expressed by cells of the innate immune system, which recognize invading microbes and activate signaling pathways that launch immune and inflammatory responses to destroy the invaders. TLR2 recognizes a variety of microbial components. These include lipoproteins/lipopeptides from various pathogens, peptidoglycan and lipoteichoic acid from Gram-positive bacteria, lipoarabinomannan from mycobacteria, glycosylphosphatidylinositol anchors from *Trypanosoma cruzi*, a phenol-soluble modulin from *Staphylococcus epidermidis*, zymosan from fungi and glycolipids from *Treponema maltophilum* (Takeda and Akira, 2005). Nucleotide-binding oligomerization domain (NOD) proteins are members of a large family of proteins named "NOD-like receptors" whose functions are essential in innate/adaptive host responses to various commensal and pathogenic bacteria. The NOD proteins act as intracellular sensors of bacterial infection. NOD-2 is able to act as a general sensor of bacterial infection (Sun and Jobin, 2014; Murphy, 2008). This study evaluated the ability of *L. reuteri* to induce the expression of TLR-2 and NOD-2 that related to prevention of dental caries formation.

METHODS

Research Design and Animal Model

This research ethical clearance has been approved by the Commission of Ethical Feasibility of Health Research-Faculty of Dentistry, Universitas Airlangga. Animal models were obtained from The Integrated Research and Testing Laboratory Jogjakarta, (LPPT). Rats that have been used in this research were 24 albino rat wistar strain which divided into 4 groups. Positive control was rats that induced with *S. Mutans*, while rats in negative control group were not induced. Group I was rats that supplemented with *L. reuteri* for 14 days (day 1-14)

and induced with *S. mutans* for 7 days (day 8-14). Group II was rats that supplemented with *L. reuteri* and induced with *S. mutans* simultaneously for 14 days (day 1-14). Concentration of bacterial suspension was 4×10^8 cfu/ml for *L. reuteri* and 10^{10} cfu/ml for *S. mutans* (Valeur et al., 2004; Ooshima et al. 1988). Each control group was consisted of 7 rats, while treatment group consisted of 5 rats. Analysis unit of this research was the gingival epithelium of rat models. Rats of all groups were euthanized on day 15. Gingival epithelium tissue of rats were taken for immunohistochemistry preparation.

L. reuteri suspension preparation

L. reuteri Prodentis starter contained in tablet x (DSM 17938+ATCC PTA 5289) was cultured in BHI broth then incubated for 24h at 37°C anaerobically in gas generating kit (Oxoid). Bacteria cell mass will appear as white sediment in tube. Bacteria then cultured into MRS medium agar (DeMan-Rogosa-Sharpe; Merck GmbH, Darmstadt, Germany) by streak method and incubated for 2x24h at 37°C. Bacteria single cell colony was taken and reincubated into BHI medium for 24h at 37°C to obtain OD= 10^8 cfu/ml ($\lambda=625$) nm (Sutton, 2011).

S. mutans suspension preparation

S. mutans serotype c was cultured from freeze-dried stock. Bacteria colony was taken with oose then cultured into BHI broth then incubated for 24h at 37°C. Cultured bacteria was streak into blood agar medium and incubated for 24h. Bacteria single cell colony was taken and reincubated into BHI medium for 24h at 37°C to obtain OD= 10^{10} cfu/ml ($\lambda=625$) nm (Ooshima et al., 1988)

Immunohistochemistry

Histopathology preparation was referred to Humason (1972) in Sudiana (2005). Immunohistochemistry results calculation was based on Soini et al., 1998; Pizem and Cor, 2003). Rat gingival tissues were fixed in 4% paraformaldehyde for 4 h at 4°C. After being washed in PBS, tissues were embedded in OCT compound then frozen immediately. Six-micrometer thick frozen tissue sections were incubated with anti TLR-2 primary antibody and anti NOD-2 primary antibody (Lab Vision) overnight at 4°C. Subsequently, tissue sections were incubated with rat monoclonal anti OPG secondary antibody (Lab Vision) and HRP kit overnight at 4°C. The chromogen that used in this study was 3,3'-diaminobenzidine tetrahydrochloride. Tissue sections were then counterstained with hematoxylin.

Statistical Analysis

Significant differences of protein expression between each treatment group was analyzed with ANOVA ($p=0.001$).

RESULTS

The expression of TLR-2 was different significantly for each group ($p=0.001$). ANOVA test result shows that TLR-2 expression in gingival epithelium of treatment groups and positive control were higher compared to

negative control (Table 1). Positive control group (20.600) TLR-2 expression was higher significantly than negative control (5.400). However, this expression decreased in group I from 15,143 to 10,429.

Table 1. ANOVA analysis of TLR-2 expression in all groups

Group	Mean	Standard Deviation	Significance *)
Control (-)	5.400	1.94936	p=0.001
Control (+)	20.600	3.36155	
Group 1	15.143	4.94734	
Group 2	10.429	2.93582	

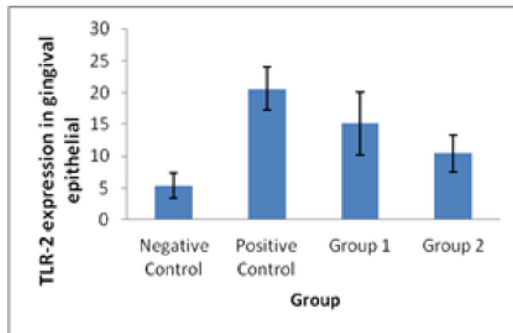


Figure 1. TLR-2 expression level in gingival epithelium after probiotic *L. reuteri* supplementation.

HSD significance different test results show that negative control was different significantly with positive control and group I. However, the comparison between negative control to group II and group I to group II results were different but not significant.

The distribution of cells that expressed NOD-2 in gingival epithelium induced with probiotic *L. reuteri* for each group can be seen in Table 3. There were significant differences of NOD-2 expression in each group (p=0.001). NOD-2 expression was higher in positive control (6.000) compared to negative control (5.200).

Table 3. ANOVA analysis of NOD-2 expression in all groups

Group	Mean	Standard Deviation	Significance*)
Control (-)	5.200	2.588	p=0.001
Control (+)	6.000	2.121	
Group 1	14.000	4.000	
Group 2	21.428	5.309	

NOD-2 expression in gingival epithelium of negative control group was lower than the other groups (Figure 2). However, there was no significant difference between positive control and negative control. The expression of NOD-2 in gingival epithelium of group II was higher than group I.

DISCUSSION

Gingival epithelium cell is the first defense mechanism against bacterial infection. It is the barrier of host milieu barrier with microbes in gingival pocket. The epithelial cells act as sensor in bacterial identification.

This patterns can be seen on Figure 1. There was increase of TLR-2 expression in gingival epithelium of all groups, except negative control (p=0.001). However, the expression of TLR-2 decreased in group I and group II.

Table 2. HSD significance difference test of all groups

Group	Negative control	Positive control	Group 1	Group 2
Control (-)	-	0.000*	0.000*	0.117
Control (+)	-	-	0.073*	0.000*
Group 1	-	-	-	0.101
Group 2	-	-	-	-

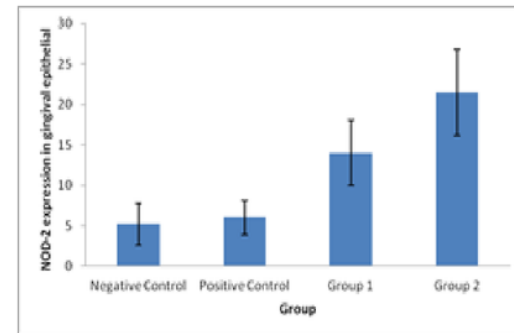


Figure 2. NOD-2 expression level in gingival epithelium after probiotic *L. reuteri* supplementation.

Direct contact of oral mucosal surface with bacteria induce the expression of various proteins as immune response mediators to epithelial cells that will give innate immunity response (Beklen et al, 2009). This immune response is designed to recognize the specific molecular structure possessed by microbes that known as pathogen-associated molecular patterns (PAMPs), consist of lipopolysaccharide from cell walls of Gram negative bacteria, peptidoglycan and lipotechoic acid from cell walls of Gram positive bacteria, manosa, bacterial DNA, N-formilmethionin found in bacterial protein, RNA double helix from viruses, lipoarabinomannan from mycobacterium, and mannan from yeast (Ma'at, 2009). Main group of pithelial cell receptor that recognize PAMPs is Toll-like receptors (TLRs). It act as membrane signaling receptor in transmembrane. It plays an important role in host response against Gram positive and negative bacteria.

41
Probiotic *L. reuteri* is a Gram positive bacteria that has specific molecular structure, such as PG and LTA. These 2 structures are ligand from a surface cell receptor (PRRs), namely Toll-like receptor-2 (TLR-2). Interaction of TLR-2 and its ligand will induce signalling as the probiotic effect. The lower expression of TLR-2 was on gingival epithelium of negative control or rats that have not treated with *L. reuteri* or *S. mutans*. Without any contact with these bacteria, there were no bacteria sensor mechanism in gingival epithelial cells. As the result, there was no interaction of PRR and PAMP. TLR-2 expression depends on specific stimuli. Cell manifestation of TLR-2 on cell surface is generally low and varies. This manifestation can also be categorized as limited (Ma'at

2009. This result also supported by Athman (2004) that stated epithelial cells in normal condition are unrespon-

sive or hyper-responsive to microbial stimulation to avoid inflammation caused by excessive microflora.

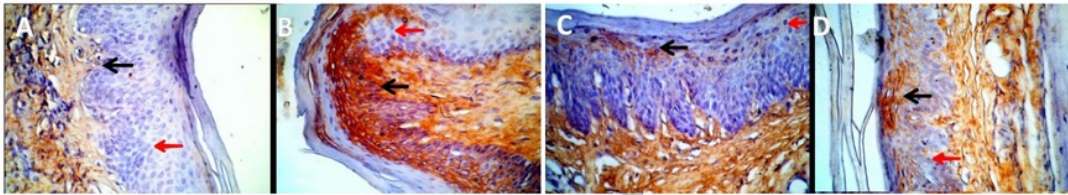


Figure 3. Immunohistochemistry of TLR-2 expression in gingival epithelium of each group (magnification 400x). Black arrow (cell expressed TLR-2). Red arrow (cell unexpressed TLR-2). Expression of TLR-2 gingival epithelium in negative control group (A); positive control group (B); group I (C); group II (D).

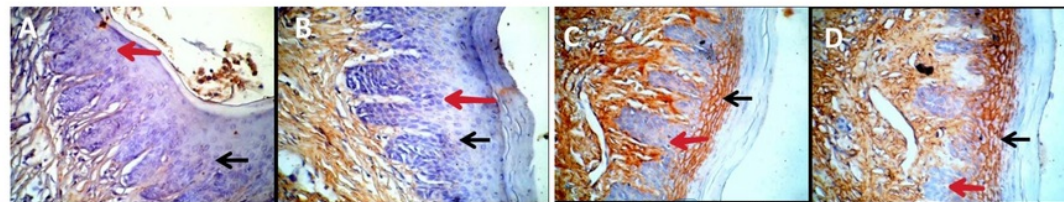


Figure 4. Immunohistochemistry of NOD-2 expression in gingival epithelium of each group (magnification 400x). Black arrow (cell expressed TLR-2). Red arrow (cell unexpressed NOD-2). Expression of TLR-2 gingival epithelium in negative control group (A); positive control group (B); group I (C); group II (D).

There are two different mechanisms of immune system, innate and adaptive immune system. Innate immune system is the first defense from pathogenic microbes infection. It is mediated by phagocyte cells such as macrophages and dendritic cells. Innate immunity identifies microorganisms through PRRs. PRRs will recognize microbial components as PAMPs. TLRs and Nod-like receptors (NLRs) are the representations of PRRs (Jeon et al., 2011). PRRs that recognize PAMPs will allow cell to identify the infection and stimulate innate immune response by increase the production of inflammatory cytokines, natural antimicrobials and stimulate adaptive immune response (Mitchell et al., 2007).

One member of the Nod-like receptors (NLRs) that has an important role in innate immunity family is NOD-2 (CARD15) (Holly et al., 2012). Nucleotide-binding oligomerization domain (NOD) consists of cytosolic protein PRRs. Both NOD-1 and NOD-2 can detect peptidoglycan from bacteria. NOD-1 detects meso-diaminopimelic acid (iE-DAP) that commonly found in Gram negative bacteria, while NOD-2 responds with muramyl dipeptide (MDP), that can be found in both Gram-positive and Gram-negative bacteria.

The expression of NOD-2 in all of treated groups were higher than negative control. These patterns were shown in Table 3 and Figure 2. Rats in negative control group were not treated with *L. reuteri* and *S. mutans*. It caused there was no interaction between PAMP and PRR. The induction of BD-2 by probiotic bacteria *L. reuteri* in gingival epithelium needs NOD-2 to mediate Rick and signal line IKK - I κ B - NF- κ B.

This research cannot explain the reason of there were no differences between TLR-2 and NOD-2 expression pattern in gingival epithelium cells. However, there is probability of synergic effect from NOD1 /NOD-2 with TLR agonic in producing GPRPs (Peptidoglycan Recog-

nition Proteins) and BD-2 in epithelial cells in oral cavity through NF- κ B pathway. On the other hand, Co-stimulation of NOD-1 /NOD-2 and TLR ligand has no effect on the production of proinflammation cytokines (IL-6, IL-8 and monocyte chemoattractant protein-1). It shows that the combination of TLR and NOD signaling in innate immune responses against microbes will produce synergic activation from antibacterial responses in epithelial cells in oral cavity (Uehara and Takada, 2008). It can be concluded that probiotic *L. reuteri* supplementation could increase the expression of TLR-2 and NOD-2 in gingival epithelium.

ACKNOWLEDGEMENT

Authors wish to acknowledge with gratitude to the support of Airlangga University Rector for research funding managed by Community Research and Service Institute (CRSI), Airlangga University, as an Excellent Research Institution of Higher Education No. 965/UN3/2014.

REFERENCES

- Abbas AK, Lichtman AH, and Pillai S. 2010. Cellular and Molecular Immunology, 6th ed, Philadelphia. Saunders: 1 – 17
- Athman R and Philpott D. 2004. Innate immunity via Toll-like receptors and Nod Proteins Current opinion in Microbiology 7: 25 – 32
- Beklen A, Sorsa T, Kontinen YT. 2009. Toll-like receptors 2 and 5 in human gingival epithelial cells cooperate with T-cell cytokine interleukin-17. Oral Microbiology Immunology 24: 38 – 42
- Cameiro LA, Magalhaes JG, Tattoli I, Philpott DJ, Travassos LH. 2008. NOD-like proteins in inflammation and disease. J.Pathol 214: 136 – 148
- Dale BA, Tao R, Kimball JR and Jurevic RJ. 2006. Oral Antimicrobial Peptides and Control of Caries. BMC Oral Health 6: 1 – 7
- Dale BA and Fredericks LP. 2007. Antimicrobial Peptides in the Oral Environment: Expression and Function in Health and Disease. Curr.Issues. Mol.Biol7: 119-134.

- 10
Fu Chen and Dong Wang, 2010. Novel technologies for the prevention and treatment of dental caries: a patent survey, *Expert Opin Ther Pat*: 20 (5): 681 -694 .
- 19
Gursoy UK and Kononen E, 2012. Understanding the roles of gingival beta defensins. *Journal of Microbiology* 4: 1 - 10
- 30
Holly L, Rosenzweig, Monica J, Jann BS, Emily E, Vance BS, Stephen R, Planck, James T, Rosenbaum and Michael PD, 2012. NOD-2 and TLR-2 function independently in a murine model of arthritis triggered by intra-articular peptidoglycan. *Arthritis Rheum*, 62(4): 1051 – 1059
- Jeon DI, Ra Park S, Young Ahn M, Gun Ahn S, Hwan Park J and Hoon Yoon J, 2011. NOD -1 and NOD -2 stimulation trigger innate immune responses of human periodontal ligament cells. *International Journal of Molecular Medicine* 29 (4): 669-703
- 6
Lebeer S, Vanderleyden J and De Keersmaecker SCJ, 2010. Host interactions of probiotic bacterial surface molecules: comparison with commensals and pathogens. *Nature Review Microbiology* 8: 171 – 184
- Ma'at S, 2009. *Toll-Like Receptor*. Airlangga University Press, Surabaya: 1 -15
- Mitchell JA, Paul-Clark MJ, Clarke GW, Mc Master SK, Cartwright, 2007. Critical role of toll-like receptors and nucleotide oligomerisation domain in the regulation of health and disease. *J. Endocrinol* 193: 323 -330
- 29
Murphy K, Travers P and Walport M, 2008. *Immuno Biology*, 7th ed, Garland Science, New York : 39-103
- 28
Nishimura E, Eto A, Kato M, Hashizume S, Imai S, Nisizawa T, Hanada N, 2004. Oral streptococci exhibit diverse susceptibility to human beta-defensin-2: antimicrobial effects of hBD-2 on oral streptococci. *Current Microbiology* 48: 85 – 87
- 34
Ooshima T, Sumi N, Izumitani A and Sobue S, 1988. Effect of inoculum size and frequency on the establishment of *Streptococcus mutans* in the oral cavities of experimental animals. *J Dent Res* 67: 964 – 968.
- 24
Pizem J and Cor A, 2003. Detection of Apoptosis Cell in Tumor Paraffin Sections. *Radiol Oncol* 37 (4):225 -232
- Scheie AA, 2004. The Biofilm Concept: Consequences for Future prophylaxis of Oral Diseases? *Crit Rev Oral Biol Med* 15 (1): 4 – 12
- 13
Soini, Y., Paakko, P and Lehto VP, 1998. Histopathological Evaluation of Apoptosis in Cancer. *American Journal of Pathology* 153 (4): 1041 – 1048
- Sudiana K, 2005. *Tehnologi Ilmu Jaringan dan Imunohistokimia*. Universitas Airlangga. Sagung Seto, Jakarta.
- 36
Sun X and Jobin C, 2014. Nucleotide-Binding Oligomerization domain-containing Protein 2 Controls Host Response to *Campylobacter jejuni* in *Il 10*^{-/-} Mice. *Journal of Infectious Diseases* :2010: 1145-1154
- 18
Sutton S, 2011. Measurement of Microbial cell by Optical Density. *Journal of Validation Technology* 17(1): 46 – 49
- Takeda K and Akira S, 2005. Toll-like receptors in innate immunity. *International Immunity* 17 (1): 1-14
- 45
Tao R, Richard J, Jurevic, Kimberly K, Coulton et al 2005. Salivary Antimicrobial Peptide Expression and Dental caries Experience in Children. *Antimicrobial Agent and Chemotherapy* 49 (9): 3883 - 3888
- 16
Uehara A and Takada H, 2008. Synergism between TLRs and NOD 1/2 in Oral Epithelial cells. *J Dent Res* 87 (7): 682 – 6.
- Valeur N, Engel P, Carbajal N, Connolly E dan Ladefoged K, 2004. Colonization and Immunomodulation by *Lactobacillus reuteri* ATCC 55730 in the Human Gastrointestinal Tract. *Applied and Environmental Microbiology* 70: 1176 – 1181
- 35
Wallace TC, Guarner F, Madsen K, Cabana MD, Gibson G, Hentges E and Sanders ME, 2011. Human gut microbita and its relationship to health and disease. *Nutrition Reviews* 69 (7): 392 – 403
- 20
Yoshihiro A, Michiko N, Tohru K, 2003. Defensin in saliva and the salivary gland. *Med Electron Microsc* 36: 247 – 252

The Expression of TLR-2 and NOD-2 in Gingival Epithelium of Rat After Probiotic Lactobacillus reuteri Supplementation to Inhibit Streptococcus mutans Growth.

ORIGINALITY REPORT

20%

SIMILARITY INDEX

15%

INTERNET SOURCES

17%

PUBLICATIONS

11%

STUDENT PAPERS

PRIMARY SOURCES

1

www.scienceline.ucsb.edu

Internet Source

1%

2

www.superarray.com

Internet Source

1%

3

Kazuhiro Yokota. "The pattern-recognition receptor nucleotide-binding oligomerization domain-containing protein 1 promotes production of inflammatory mediators in rheumatoid arthritis synovial fibroblasts", *Arthritis & Rheumatism*, 05/2012

Publication

1%

4

Philip M. Preshaw. "How has research into cytokine interactions and their role in driving immune responses impacted our understanding of periodontitis? : Cytokine interactions and immune responses in periodontitis", *Journal Of Clinical Periodontology*, 03/2011

Publication

1%

5	Sun, X., and C. Jobin. "Nucleotide-Binding Oligomerization Domain-Containing Protein 2 Controls Host Response to <i>Campylobacter jejuni</i> in Il10 ^{-/-} Mice", <i>The Journal of Infectious Diseases</i> , 2014. Publication	1%
6	atrium.lib.uoguelph.ca Internet Source	1%
7	jdr.sagepub.com Internet Source	1%
8	soar.wichita.edu Internet Source	1%
9	www.ajtmh.org Internet Source	1%
10	www.rombio.eu Internet Source	1%
11	dare.uvu.vu.nl Internet Source	1%
12	deposit.ddb.de Internet Source	1%
13	Yunlan, Li, Zheng Juan, and Li Qingshan. "Antitumor Activity of Di-n-Butyl-(2,6-Difluorobenzohydroxamato)Tin(IV) against Human Gastric Carcinoma SGC-7901 Cells via G2/M Cell Cycle Arrest and Cell Apoptosis",	1%

14	www.iob.uio.no Internet Source	1%
15	"Researchers from Airlangga University Provide Details of New Studies and Findings in the Area of Def", Life Science Weekly, Feb 7 2017 Issue Publication	1%
16	www.allergy.go.jp Internet Source	1%
17	www.intechopen.com Internet Source	1%
18	Submitted to Massey University Student Paper	<1%
19	Submitted to University of Central Lancashire Student Paper	<1%
20	Hasan Kucukkolbas. "DETERMINATION OF DEFENSIN HNP-1 IN HUMAN SALIVA OF PATIENTS WITH ORAL MUCOSAL DISEASES", Journal of Immunoassay and Immunochemistry, 2011 Publication	<1%
21	de Lemos, Edite, and Flávio Reis. "Physical Activity and Inflammation : An Overview",	<1%

Chronic Inflammation Molecular
Pathophysiology Nutritional and Therapeutic
Interventions, 2012.

Publication

22

Ahn, MY, H-E Yoon, J-H Park, J Lee, S-K Min, S-G Ahn, and J-H Yoon. "Characterization of NODs and TLRs in innate immune response of human cementoblast cells", Oral Diseases, 2013.

Publication

23

berkalahayati.org

Internet Source

24

Štefan Tóth, Mikuláš Pomfy, Peter Wohlfahrt, Stanislava Pingorová et al. "Detection of early stages of apoptosis in experimental intestinal ischemia-reperfusion injury", Biologia, 2007

Publication

25

Sarah Lebeer. "Host interactions of probiotic bacterial surface molecules: comparison with commensals and pathogens", Nature Reviews Microbiology, 03/2010

Publication

26

www.efsa.europa.eu

Internet Source

27

Submitted to St George's Hospital Medical School

Student Paper

<1%

<1%

<1%

<1%

<1%

<1%

28	bmcoralhealth.biomedcentral.com Internet Source	<1%
29	Submitted to Anglia Ruskin University Student Paper	<1%
30	Holly L. Rosenzweig. "NOD2 and TLR2 function independently in a murine model of arthritis triggered by intra-articular peptidoglycan", <i>Arthritis & Rheumatism</i> , 2010 Publication	<1%
31	Moraes, Theo, and Gregory Downey. "Non-immunologic mechanisms of pulmonary defense", <i>Respiratory Infections</i> , 2006. Publication	<1%
32	Submitted to Middle East Technical University Student Paper	<1%
33	www.sigmaaldrich.com Internet Source	<1%
34	jcm.asm.org Internet Source	<1%
35	www.spandidos-publications.com Internet Source	<1%
36	Markus M. Heimesaat, Ursula Grundmann, Marie E. Alutis, André Fischer, Stefan Bereswill. "Absence of Nucleotide-Oligomerization-Domain-2 Is Associated with	<1%

Less Distinct Disease in *Campylobacter jejuni* Infected Secondary Abiotic IL-10 Deficient Mice", *Frontiers in Cellular and Infection Microbiology*, 2017

Publication

37

T. Umenai. "Eradication of the commensal intestinal microflora by oral antimicrobials interferes with the host response to lipopolysaccharide", *European Journal of Clinical Microbiology & Infectious Diseases*, 03/20/2010

Publication

38

Submitted to National University of Singapore

Student Paper

39

www.docstoc.com

Internet Source

40

Pamela A. Haile, Bartholomew J. Votta, Robert W. Marquis, Michael J. Bury et al. " The Identification and Pharmacological Characterization of 6-(-Butylsulfonyl)- -(5-fluoro-1 -indazol-3-yl)quinolin-4-amine (GSK583), a Highly Potent and Selective Inhibitor of RIP2 Kinase ", *Journal of Medicinal Chemistry*, 2016

Publication

41

www.dailyhealthwatcher.com

Internet Source

<1%

<1%

<1%

<1%

<1%

42 A. Beklen. "Toll-like receptors 2 and 5 in human gingival epithelial cells co-operate with T-cell cytokine interleukin-17", Oral Microbiology and Immunology, 02/2009 <1%

Publication

43 www.smartscitech.com <1%

Internet Source

44 umexpert.um.edu.my <1%

Internet Source

45 Davidopoulou, Sotiria, Eudoxia Diza, Georgios Menexes, and Sotirios Kalfas. "Salivary concentration of the antimicrobial peptide LL-37 in children", Archives of Oral Biology, 2012. <1%

Publication

46 N Becser, T Sand, J-A Zwart. "Reliability of Cephalic Thermal Thresholds in Healthy Subjects", Cephalalgia, 2016 <1%

Publication

Exclude quotes On
Exclude bibliography Off

Exclude matches < 5 words

The Expression of TLR-2 and NOD-2 in Gingival Epithelium of Rat After Probiotic Lactobacillus reuteri Supplementation to Inhibit Streptococcus mutans Growth.

GRADEMARK REPORT

FINAL GRADE

/100

GENERAL COMMENTS

Instructor

PAGE 1

PAGE 2

PAGE 3

PAGE 4

PAGE 5
