

TURKISH JOURNAL OF PHARMACEUTICAL SCIENCES



TURKISH JOURNAL OF PHARMACEUTICAL SCIENCES

Editor-in-Chief

Prof. Terken BAYDAR, Ph.D., E.R.T.

orcid.org/0000-0002-5497-9600

Hacettepe University, Faculty of Pharmacy,
Department of Toxicology, Ankara, TURKEY
tbaydar@hacettepe.edu.tr

Associate Editors

Prof. Samiye YABANOĞLU ÇİFTÇİ, Ph.D.

orcid.org/0000-0001-5467-0497

Hacettepe University, Faculty of Pharmacy,
Department of Biochemistry, Ankara, TURKEY
samiye@hacettepe.edu.tr

Assoc. Prof. Pınar ERKEKOĞLU, Ph.D.

orcid.org/0000-0003-4713-7672

Hacettepe University, Faculty of Pharmacy,
Department of Toxicology, Ankara, TURKEY
erkekp@hacettepe.edu.tr

Editorial Board

Prof. Fernanda BORGES, Ph.D.

orcid.org/0000-0003-1050-2402

Porto University, Faculty of Sciences, Department of
Chemistry and Biochemistry, Porto, PORTUGAL
fborges@fc.up.pt

Prof. Bezhan CHANKVETADZE, Ph.D.

orcid.org/0000-0003-2379-9815

Ivane Javakishvili Tbilisi State University, Institute
of Physical and Analytical Chemistry, Tbilisi,
GEORGIA
jpba_bezhan@yahoo.com

Prof. Dietmar FUCHS, Ph.D.

orcid.org/0000-0003-1627-9563

Innsbruck Medical University, Center for Chemistry
and Biomedicine, Institute of Biological Chemistry,
Biocenter, Innsbruck, AUSTRIA
dietmar.fuchs@i-med.ac.at

Prof. Satyajit D. Sarker, Ph.D.

orcid.org/0000-0003-4038-0514

Liverpool John Moores University, Liverpool,
UNITED KINGDOM
S.Sarker@ljmu.ac.uk

Prof. Luciano SASO, Ph.D.

orcid.org/0000-0003-4530-8706

Sapienze University, Faculty of Pharmacy
and Medicine, Department of Physiology and
Pharmacology "Vittorio Ersamer", Rome, ITALY
luciano.saso@uniroma1.it

Prof. Rob VERPOORTE, Ph.D.

orcid.org/0000-0001-6180-1424

Leiden University, Natural Products Laboratory,
Leiden, NETHERLANDS
verpoort@chem.leidenuniv.nl

Advisory Board

Prof. Nurettin ABACIOĞLU, Ph.D.

Kyrenia University, Faculty of Pharmacy,
Department of Pharmacology, Girne, TRNC,
CYPRUS

Prof. Kadriye BENKLİ, Ph.D.

Girne American University, Faculty of Pharmacy,
Department of Pharmaceutical Chemistry, Girne,
TRNC, CYPRUS

Prof. Arzu BEŞİKCİ, Ph.D.

Ankara University, Faculty of Pharmacy,
Department of Pharmacology, Ankara, TURKEY

Prof. Erem BİLENSOY, Ph.D.

Hacettepe University, Faculty of Pharmacy, Department
of Pharmaceutical Technology, Ankara, TURKEY

Prof. Hermann BOLT, Ph.D.

Dortmund University, Leibniz Research Centre, Institute
of Occupational Physiology, Dortmund, GERMANY

Prof. Erdal CEVHER, Ph.D.

İstanbul University Faculty of Pharmacy,
Department of Pharmaceutical Technology,
İstanbul, TURKEY

Prof. Nevin ERK, Ph.D.

Ankara University, Faculty of Pharmacy,
Department of Analytical Chemistry, Ankara,
TURKEY

Prof. Jean-Alain FEHRENTZ, Ph.D.

Montpellier University, Faculty of Pharmacy,
Institute of Biomolecules Max Mousseron,
Montpellier, FRANCE

Prof. Joerg KREUTER, Ph.D.

Johann Wolfgang Goethe University, Faculty of
Pharmacy, Institute of Pharmaceutical Technology,
Frankfurt, GERMANY

Prof. Christine LAFFORGUE, Ph.D.

Paris-Sud University, Faculty of Pharmacy,
Department of Dermopharmacology and
Cosmetology, Paris, FRANCE

Prof. Şule APIKOĞLU RABUŞ, Ph.D.

Marmara University, Faculty of Pharmacy,
Department of Clinical Pharmacy, İstanbul,
TURKEY

Prof. Robert RAPOPORT, Ph.D.

Cincinnati University, Faculty of Pharmacy,
Department of Pharmacology and Cell Biophysics,
Cincinnati, USA

Prof. Wolfgang SADEE, Ph.D.

Ohio State University, Center for
Pharmacogenomics, Ohio, USA

Prof. Hildebert WAGNER, Ph.D.

Ludwig-Maximilians University, Center for
Pharmaceutical Research, Institute of Pharmacy,
Munich, GERMANY

Assoc. Prof. Hande SİPAHİ, Ph.D.

Yeditepe University, Faculty of Pharmacy,
Department of Toxicology, İstanbul, TURKEY

Assoc. Prof. İpek SÜNTAR, Ph.D.

Gazi University, Faculty of Pharmacy, Department
of Pharmacognosy, Ankara, TURKEY

TURKISH JOURNAL OF PHARMACEUTICAL SCIENCES

Volume: 17, No: 2, Year: 2020

CONTENTS

Original articles

- Various *In Vitro* Bioactivities of Secondary Metabolites Isolated from the Sponge *Hyrtios aff. Erectus* from the Red Sea Coast of Egypt
Asmaa NABIL-ADAM, Mohamed A. SHREDAH, Nehad M Abd EL MONEAM, Samy A EL-ASSAR 127
- In Vivo* Antioxidant Activity of Different Fractions of *Indigofera Barberi* Against Paracetamol-induced Toxicity in Rats
Shaik AMINABEE, Atmakuri Lakshmana RAO, Maram Chinna ESWARIAH 136
- Development and Validation of a Stability Indicating RP-HPLC Method for Simultaneous Estimation of Teneligliptin and Metformin
Rajani VETAPALEM, Rajendra Prasad YEJELLA, Lakshmana Rao ATMAKURI 141
- A High Performance Thin Layer Chromatographic Method Using a Design of Experiment Approach for Estimation of Phytochemicals in Extracts of *Moringa Oleifera* Leaves
Asha THOMAS, Abhilash KANAKDHAR, Adinath SHIRSAT, Sanjeevani DESHKAR, Lata KOTHAPALLI 148
- Floating Microspheres of Enalapril Maleate as a Developed Controlled Release Dosage Form: Investigation of the Effect of an Ionotropic Gelation Technique
Ali Khidher ABBAS, Anas Tarik ALHAMDANY 159
- Comparison of Lipid and Lipoprotein Values of Wrestlers and Soccer Players
Semra ÇETİN, Cuma ECE, Meltem PAKSOY, Hasan Nedim ÇETİN 172
- Theoretical Study on Ionization of Boric Acid in Aqueous Solution by *Ab Initio* and DFT Methods at T=298.15 K
Hoodad GHANIZADEH, Farhoush KIANI, Fardad KOOHYAR, Bahareh KHANLARZADEH 177
- Cleaning Method Validation for Estimation of Dipyridamole Residue on the Surface of Drug Product Manufacturing Equipment Using Swab Sampling and by High Performance Liquid Chromatographic Technique
Sriram VALAVALA, Nareshvarma SEELAM, Subbaiah TONDEPU, Vivekanandan SUNDARAMURTHY 182
- Inhibitory Effect of Roselle Aqueous Extracts-HPMC 6000 Gel on the Growth of *Staphylococcus Aureus* ATCC 25923
Isnaeni ISNAENI, Esti HENDRADI, Natalia Zara ZETTIRA 190
- Evaluation of the Antioxidant Potency of *Seseli* L. Species (Apiaceae)
Alev ÖNDER, Ahsen Sevde ÇINAR, Sezen YILMAZ SARIALTIN, Mehmet Necat İZGİ, Tülay ÇOBAN 197
- Comparative *In Vitro* and *In Vivo* Evaluation of Fenofibric Acid as an Antihyperlipidemic Drug
Yulias Ninik WINDRIYATI, Yeyet Cahyati SUMIRTAPURA, Jessie Sofia PAMUDJI 203
- Ethnobotanical Study of Medicinal Plants in Aziziye District (Erzurum, Turkey)
Songül KARAKAYA, Ahmet POLAT, Özkan AKSAKAL, Yusuf Ziya SÜMBÜLLÜ, Ümit İNCEKARA 211
- Statistical Design and Optimization of Sustained Release Formulations of Pravastatin
Raghavendra Kumar GUNDA, Prasada Rao MANCHINENI 221
- Extended Hildebrand Solubility Approach: Prediction and Correlation of the Solubility of Itraconazole in Triacetin: Water Mixtures at 298.15°K
Sachin JAGDALE, Rajesh B NAWALE 228
- ### Review
- Psychoactive Bath Salts and Neurotoxicity Risk
Beril ALTUN, İsmet ÇOK 235



Inhibitory Effect of Roselle Aqueous Extracts- HPMC 6000 Gel on the Growth of *Staphylococcus Aureus* ATCC 25923

Hibiscus Sabdariffa L Sulu Ekstrelerini İçeren HPMC 6000 Jel Formülasyonunun *Staphylococcus Aureus* ATCC 25923 Büyümesi Üzerine İnhibitör Etkisi

Isnaeni ISNAENI^{1*}, Esti HENDRADI², Natalia Zara ZETTIRA²

¹Airlangga University, Faculty of Pharmacy, Department of Pharmaceutical Chemistry, Surabaya, Indonesia

²Airlangga University, Faculty of Pharmacy, Department of Pharmaceutics, Surabaya, Indonesia

ABSTRACT

Objectives: Roselle (*Hibiscus sabdariffa* L.) is a medicinal plant commonly used as a beverage and herbal medicine. Complex compounds in the aqueous extracts have provided good antibacterial activity by which the growth of gram-negative and -positive bacteria is inhibited. The aims of this research were to formulate hydroxypropyl methylcellulose (HPMC) 6000 gel containing the extract and investigate the inhibitory activity of the extract and its gel formula against *Staphylococcus aureus* ATCC 25923.

Materials and Methods: Thin layer chromatography (TLC) on silica gel GF254 was used for analyzing flavonoids and polyphenols using butanol: acetic acid: water (4:1:5) and chloroforms: ethyl acetate: formic acid (0.5:9:0.5) as eluent, respectively. A serial dilution of aqueous extract powder in citrate buffer was made to obtain 0.50, 0.25, 0.10, 0.05, and 0.02 mg/mL solution. The roselle aqueous extract (3%) was formulated as a component of gel containing HPMC 6000 in various concentrations (2%, 3%, and 4%). A diffusion agar method on two layers of nutrient agar media was applied using *Staphylococcus aureus* ATCC 25923 and gentamicin 25 ppm as bacterial test and standard, respectively. After incubation for 24 h at 37°C, the inhibitory effect was denoted by a clear zone around the hole and the inhibitory activity was measured as minimum inhibitory concentration (MIC).

Results: The aqueous extract of *Hibiscus sabdariffa* L. contained flavonoid and polyphenol compounds based on the TLC chromatogram profile. It was found that the gel formula containing 3% HPMC 6000 and 3% aqueous extract gave a good physical characteristic and the lowest MIC (6.0 mg/mL), equivalent to 7.58 ppm of gentamicin standard at 12.0 mg/mL concentration.

Conclusion: The HPMC 6000 at 3% (w/w) concentration in roselle aqueous extract gel preparation gave good physical characteristics. The gel preparation exhibited inhibitory activity against *Staphylococcus aureus* ATCC 25923 shown by MIC 6.0 mg/mL. Formula 2 is recommended and should be further investigated for implementation in topical preparations.

Key words: Inhibitory effect, *Hibiscus sabdariffa*, HPMC 6000, *Staphylococcus aureus*

ÖZ

Amaç: *Hibiscus sabdariffa* L. yaygın olarak içecek ve bitkisel ilaç olarak kullanılan tıbbi bir bitkidir. Sulu ekstrelerindeki kompleks bileşikler, gram negatif ve pozitif bakterilerin büyümesini inhibe ederek antibakteriyel aktivite göstermiştir. Bu araştırmanın amacı, ekstre içeren hidroksipropil metilselüloz (HPMC) 6000 jelini formüle etmek, ekstrelin inhibe edici etkisini ve jel formülünün *Staphylococcus aureus* ATCC 25923'e karşı gösterdiği inhibitör etkiyi araştırmaktır.

Gereç ve Yöntemler: Elüent olarak butanol: asetik asit: su (4:1:5) ve kloroform:etil asetat: formik asit (0,5:9:0,5) kullanılarak sırasıyla flavonoidleri ve polifenollerini analiz etmek amacıyla silika jel GF254 üzerinde ince tabaka kromatografisi gerçekleştirildi. 0,50, 0,25, 0,10, 0,05 ve 0,02 mg/mL

*Correspondence: E-mail: isna.yudi@gmail.com, Phone: +6281331021303 ORCID-ID: orcid.org/0000-0003-4502-2433

Received: 26.05.2018, Accepted: 24.01.2019

©Turk J Pharm Sci, Published by Galenos Publishing House.

konsantrasyonda çözelti elde etmek için sitrat tamponu içinde sulu ekstrenin seri seyreltilmesi yapıldı. *Hibiscus sabdariffa*'nın sulu ekstresinin (%3), çeşitli konsantrasyonlarda (%2, %3 ve %4) HPMC 6000 içeren jelleri formüle edildi. Bakteriyel test ve standart olarak sırasıyla *Staphylococcus aureus* ATCC 25923 ve gentamisin 25 ppm kullanılarak agar ortamına difüzyon agar yöntemi uygulandı. 37°C'de 24 saat inkübasyondan sonra, inhibitör aktivite, minimum inhibitör konsantrasyon (MIC) olarak ölçüldü.

Bulgular: *Hibiscus sabdariffa* L.'nin sulu ekstresinin, flavonoid ve polifenol bileşikleri içerdiği ince tabaka kromatografisi-kromatogramı ile belirlendi. %3 HPMC 6000 ve %3 sulu ekstre içeren jel formülünün, 12,0 mg/mL konsantrasyonda 7,58 ppm gentamisin standardına eşdeğer olacak şekilde en düşük MIC değerine (6,0 mg/mL) sahip olduğu ve fiziksel özelliklerinin iyi olduğu bulunmuştur.

Sonuç: *Hibiscus sabdariffa* sulu ekstresinin %3 (a/a) konsantrasyonda HPMC 6000 içeren jel formülasyonunda iyi fiziksel özellikler gösterdiği tespit edildi. Jel formülü, *Staphylococcus aureus* ATCC 25923'e karşı MIC 6,0 mg/mL değeri ile inhibitör aktivite gösterdi. En iyi formül olarak belirlenen formül 2'nin topikal preparatlarda kullanılabilmesi için ileri araştırmalara ihtiyaç vardır.

Anahtar kelimeler: Inhibitör etki, *Hibiscus sabdariffa*, HPMC 6000, *Staphylococcus aureus*

INTRODUCTION

Roselle (*Hibiscus sabdariffa* L.) is a medicinal plant commonly produced as a beverage and herbal medicine. It has multiple activities, one of which is antibacterial activity.¹ The aqueous extracts of roselle calyces contain saponins, alkaloids, tannins, polyphenols, flavonoids, and their glycosides. The saponins and flavonoids make up the largest content.^{2,3} These compounds indicate synergistic effects. Complex compounds in the extracts have provided good antibacterial activity.⁴ Proto-catechuic acid is a polyphenolic compound found in roselle calyces. It inhibited the bacterial growth of methicillin resistant *Staphylococcus aureus*, *Klebsiella pneumoniae*, *Pseudomonas aeruginosa*, and *Acinetobacter baumannii* at 5 mg/mL.⁵⁻⁷

In terms of antimicrobial activity, roselle aqueous extract was used at a concentration above its minimum inhibitory concentration (MIC) 3%. The low pH values of roselle aqueous extract (2.42±0.01) led to hydroxypropyl methylcellulose (HPMC) 6000 being chosen as a gelling agent at concentrations of 2%, 3%, and 4%, because this matrix is stable and indicates good swelling ability in acidic conditions. An effort to discover a new topical dosage form containing roselle extract as active ingredient against infectious diseases was the main target of the present research.

MATERIALS AND METHODS

Chemicals

The materials were pharmaceutical grade. Dried aqueous extract of roselle was purchased from PT ASIMAS; HPMC 6000, citric acid monohydrate, sodium citrate dihydrate, propylene glycol, sodium benzoate, gentamicin sulfate, and nutrient agar from Oxoid; sodium chloride from Merck; and distilled water from PD Surabaya Air Suling. *Staphylococcus aureus* ATCC 25923 was obtained from the Department of Microbiology, Faculty of Medicine, Airlangga University.

Qualitative analysis of roselle aqueous extracts

Analysis of the extract included an organoleptic examination (shape, odor, and color) and pH, while the chromatogram pattern of flavonoids and polyphenols was analyzed by thin layer chromatography (TLC) on Kiesel Gel GF₂₅₄ plates. The chromatographic profile of the flavonoids was evaluated by shaking 1 g of the extract with *n*-hexane repeatedly until it was colorless and the residue was dissolved in 5 mL of ethanol. Then

the solution was spotted and developed in butanol: acetic acid: water (4:1:5, v/v). The presence of flavonoids was denoted by intensive yellow spots on the plate after contact with ammonia fumes. The polyphenols' chromatogram pattern of the extracts was obtained by mixing 1 g of extract and 10 mL of hot distilled water at room temperature. The solution was spotted on a TLC plate after filtering and developed in chloroforms:ethyl acetate: formic acid (0.5:9:0.5, v/v) and sprayed with FeCl₃ solution for indicating the presence of polyphenols by the appearance of black spots.^{1,2}

Qualitative analysis of HPMC 6000

The qualitative examination of HPMC 6000 including pH value and viscosity was analyzed using a pH-meter and Brookfield viscometer, respectively.^{6,8}

Viscosity was measured according to the Brookfield viscometer manual. The spindle was lowered and centered in the test material (600 mL in beaker) to meet the "meniscus" of the fluid at the center position of the immersion groove. The viscosity measurement was performed by turning of the switch "ON". Time was allowed for the indicated reading to stabilize. The reading was noted and multiplied by the factor appropriate to the viscometer model/spindle/speed combination being used. The available table or the FACTOR FINDER was referred to for calculating viscosity. Readings below 10.0% torque (dial reading) should be avoided.

Determining the MIC of roselle aqueous extracts

The MIC of roselle aqueous extracts was determined by agar diffusion method and molding hole against *Staphylococcus aureus* ATCC 25923. The bacterial test was cultured on nutrient agar medium slants in glass tubes and incubated for 24 h at 37°C. The inoculum suspension was prepared by adding sterile 0.9% NaCl solution to fresh culture, shaking, and measuring the optical density at 580 nm adjusted until 25% transmittance of inoculum was obtained. The extracts weighed 100 mg and were dissolved in citrate buffer until 10 mL. The solution was diluted to 0.50, 0.25, 0.10, 0.05, and 0.02 mg/mL to obtain a concentration higher than the MIC. Two layers of test media were prepared and applied. The agar was perforated with 6 sterile holders. Samples and a positive control (gentamicin 25 ppm) were put into each of the holes, incubated at 37°C for 24 h, and observed. The growth inhibitory zone diameter was measured and the smallest concentration that still inhibited the growth of the test bacterium (MIC) was determined.

Formulation of roselle aqueous extracts gel

Based on the MIC of the roselle extract, the gel formula was examined using the extract at higher concentration than the MIC. Some 7.5 g of the extracts and 250 mg of sodium benzoate were dissolved in warmed citrate buffer (70-80°C) and then poured into HPMC 6000 dispersion with 10 g of propylene glycol. The solution was stirred until gel mass formed and stopped at 35°C. The composition of the gel formulation is shown in Table 1.

Physical examination of the gel preparation

Physical examination of the gel preparation included viscosity, pH, and dispersive analysis. The analysis of the dispersive power was carried out using two calibration slides. Approximately 1 g of gel was put in the middle of the slide and covered with the other slide. Weights were orderly added starting from 5 g on the upper slide. The weight was continuously added until the preparation no longer spread (approximately 5 min) and the diameter was recorded. Afterwards, a curve of the relationship between the dispersion diameter (cm) and the weight (g) was observed. The dispersion ability was determined from the slope of the regression equation of the dispersion diameter and the weight.⁹⁻¹¹ The experiment was replicated three times.

Determining the MIC of the selected formula

Gel solution of 12.0 mg/mL was diluted to obtain solution at 6.0, 3.0, 1.5, 0.8, 0.4, 0.2, 0.1, and 0.05 mg/mL concentrations. The determination of MIC was carried out the same as for the extract. The agar was perforated with 19 sterile holders. Approximately 50 µL of the positive control (gentamicin), negative control (gel base), and sample were put into each hole. The disk was incubated at 37°C for 24 h and the growth inhibitory zone and its diameter (mm) were observed and measured. Gentamicin solution at 100 ppm was made and diluted to obtain solution at 25, 20, 15, 10, and 5 ppm concentrations. A logarithmic test of gentamicin concentration vs. the inhibitory zone diameter (mm) curve was performed and the regression equation obtained was used to calculate the inhibitory activity of the sample solution equally to the gentamicin standard by plotting inhibitory diameter.

Statistical analysis

The significant difference of inhibitory activity among roselle aqueous extract formulas was determined by one-way variance analysis (ANOVA). Furthermore, the significant differences

Table 1. Gel formula of roselle aqueous extracts						
Materials	Formula					
	Preparation (%)			Base (%)		
	1	2	3	1	2	3
HPMC 6000	2	3	4	2	3	4
Roselle aqueous extracts	3	3	3	-	-	-
Propylene glycol	5	5	5	5	5	5
Sodium benzoate	0.1	0.1	0.1	0.1	0.1	0.1
Citrate buffer (pH 4.505)	89.9	88.9	87.9	92.9	91.9	90.9

HPMC: Hydroxypropyl methylcellulose

were determined by the honestly significant difference test with the reliability value of 0.95 ($\alpha=0.05$). If the value is >0.05 then there is no significant difference between the tested formulas. This study does not require ethics committee approval or patient informed consent.

RESULTS

Screening of the extract contents was carried out according to Marlina et al.¹² and Villani et al.¹³ Based on the profile of the TLC chromatogram, roselle aqueous extracts contained polyphenols and flavonoids as reported in previous research.¹⁴ The pH value of the extract was 2.54 ± 0.004 , close to the literature (2.42 ± 0.01).^{2,3}

Regardless of HPMC qualification, its viscosity was >100 cPss at 2% concentration.^{15,16} The viscosity criterion was accepted if the measured result was not less than 75.0% and not more than 140.0%.

The MIC of the roselle aqueous extracts was 0.1 mg/mL against *Staphylococcus aureus* ATCC 25923 (Table 2, Figures 1 and 2). This value is higher than that in previous research; the MIC of the aqueous extracts of roselle calyces against *Staphylococcus aureus* and *Streptococcus faecalis* was reported as 0.5 mg/mL. Furthermore, *Escherichia coli*, *Klebsiella pneumoniae*, and *Salmonella typhi* were inhibited by the MIC value of 1.0 mg/mL.^{7,16} Despite these effects, roselle extracts have a therapeutic effect for gastrointestinal infection, diarrhea, and skin diseases.⁷

The viscosity and pH values of the gel base and its preparation are depicted in Figures 3 and 4. It was found that viscosity of

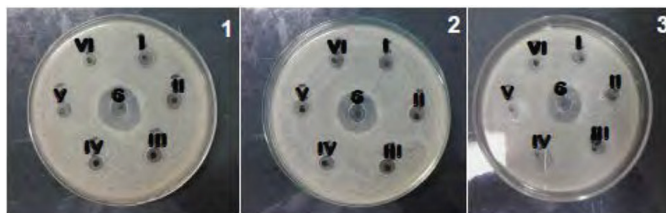


Figure 1. The result of MIC determination of roselle aqueous extracts (1, 2, 3=triple replication; I=0.50 mg/mL; II=0.25 mg/mL; III=0.12 mg/mL; IV=0.10 mg/mL; V=0.05 mg/mL; VI=0.02 mg/mL; G=gentamicin 25 ppm) MIC: Minimum inhibitory concentration

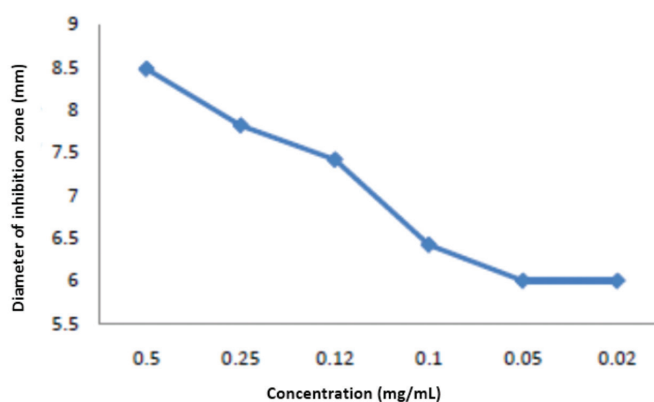


Figure 2. Graph of inhibitory activity of roselle aqueous extracts

the gel preparation containing aqueous roselle extracts was higher than that of the gel base (without the roselle extract). On the other hand, the pH value of the gel preparation was lower than that of the gel base.

The dispersive power analysis of the gel base and gel preparation depicted in Figure 5 showed that both the gel base and preparations of 1st and 2nd formulas reached the maximum dispersion capacity at 10 g and 35 g loading load (the weight of the load placed on the gel base and gel preparation), respectively, while the 3rd formula reached maximum dispersion capacity at 65 g loading load.

The bacterial inhibitory activity of the gel preparations indicated that the greater concentration of HPMC, the lower inhibition

Table 2. The result of MIC determination of roselle aqueous extracts

Rep Conc. (mg/mL)	Inhibitory diameter (mm)			
	1	2	3	Average
0.50	8.80	8.65	8.00	8.48±0.42
0.25	8.20	7.70	7.55	7.82±0.34
0.12	7.70	7.35	7.20	7.42±0.26
0.10	6.65	-	6.60	6.62±0.05
0.05	-	-	-	-
0.02	-	-	-	-

Diameter of reservoir: 6.00 mm, MIC: Minimum inhibitory concentration

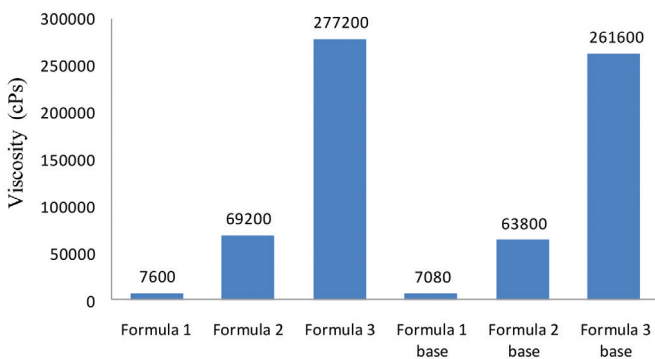


Figure 3. Graph of the viscosity of the gel preparation of roselle aqueous extracts and gel/formula base

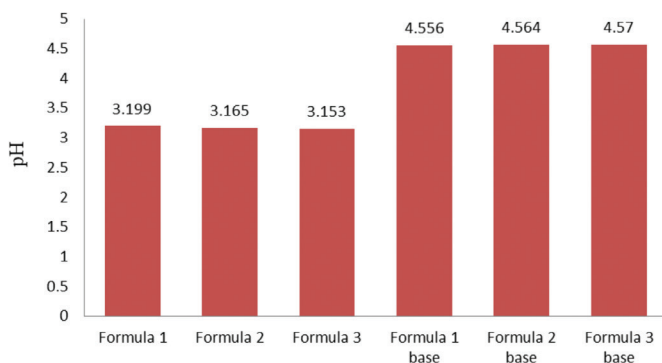


Figure 4. Graph of the pH of the gel preparation and gel/formula base of roselle aqueous extracts

activity was obtained (Figure 6 and Table 3). The greater the viscosity of the gel preparation, the lower capacity of active material to be released.⁹⁻¹¹

Based on the physical evaluation, formula 2 was chosen, because its viscosity was close to the specification (30,000 cPs). The result of the MIC determination of formula 2 (Figure 7), the inhibitory diameter (Table 4), and the inhibitory graph of formula 2 (Figure 8) were analyzed statistically. Gentamicin 25 ppm was chosen as the positive control to ensure that the bacterial test used in this research was sensitive against the antibiotic. A serial concentration of gentamicin was used as the standard curve for evaluation of the extract potency relative to the standard.

Based on one-way ANOVA, there was a significant difference between the inhibitory activity of 12.0 and 6.0 mg/mL, and there was no significant difference between 3.0, 1.5, and 0.8 mg/mL of the gel preparation. In conclusion, formula 2 exhibited MIC at 6.0 mg/mL against *Staphylococcus aureus* ATCC 25923.

The inhibitory activity of gentamicin at serial dilution against the test bacterium was evaluated by a regression equation, where Y and X were the diameter of the inhibitory zone (mm) and log of concentrations (ppm), respectively. The log concentration of formula 2 with diameter of inhibitory zone 9.75 mm was calculated by the regression equation. Equivalent to this growth inhibitory diameter (x), 7.58 ppm of gentamicin concentration was obtained. Furthermore, the inhibitory potency of the roselle aqueous extracts gel at 12.0 mg/mL (roselle concentration in gel 3% w/w) against *Staphylococcus aureus* ATCC 25923 was equal to 7.58 ppm of the gentamicin sulfate standard solution.

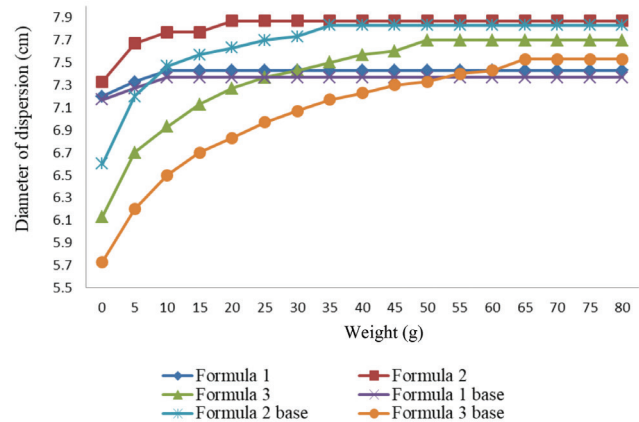


Figure 5. Graph of dispersive power of the gel preparation and gel/formula base of roselle aqueous extracts

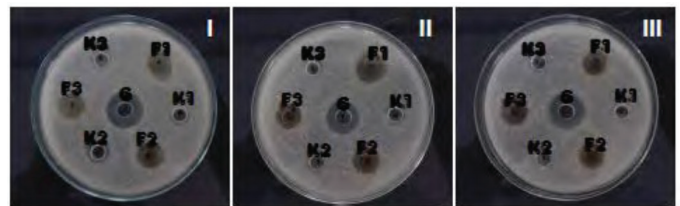


Figure 6. The antibacterial activities of formula 1, 2 and 3 at 12.0 mg/mL (I, II, and III=replication; F1=formula 1; F2=formula 2; F3=formula 3; K1=formula base 1; K2=formula base 2; K3=formula base 3; G=gentamicin 25 ppm)

DISCUSSION

Identification of polyphenols and flavonoids in the chromatogram pattern showed that they play an important role in antibacterial activity.^{4,12,14} The pH of 1% solution of roselle aqueous extracts was highly acidic due to high organic acid contents, such as malic acid and ascorbic acid. The acidity of roselle also plays an important role in its antibacterial activity.^{1,2,14} The qualification of the HPMC 6000 indicated that the matrix had viscosity

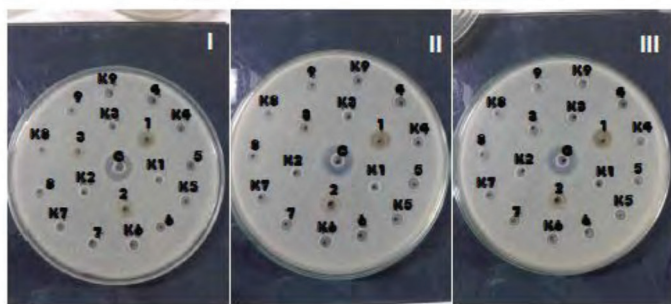


Figure 7. The result of the MIC determination of formula 2 (I, II, III=replication 3; 1=12.0 mg/mL; 2=6.0 mg/mL; 3=3.0 mg/mL; 4=1.5 mg/mL; 5=0.8 mg/mL; 6=0.4 mg/mL; 7=0.2 mg/mL; 8=0.1 mg/mL; 9=0.05 mg/mL; K1=dilution base 1; K2=dilution base 2; K3=dilution base 3; K4=dilution base 4; K5=dilution base 5; K6=dilution base 6; K7=dilution base 7; K8=dilution base 8; K9=dilution base 9; G=gentamicin at 25 ppm), MIC: Minimum inhibitory concentration

satisfactory for a gelling agent. The pH value of 2% w/w solution of HPMC 6000 in water was 4.445 ± 0.053 stabilized by the acidic properties of the extract. The pH value was different from the literature (5.0-8.0)¹⁵ possibly because of the different producers, the quality, and the storage condition of the raw materials.

It was found that the MIC of the roselle aqueous extracts against *Staphylococcus aureus* ATCC 25923 was 0.1 mg/mL. This value was used as the concentration of the formula, to which 3% w/w

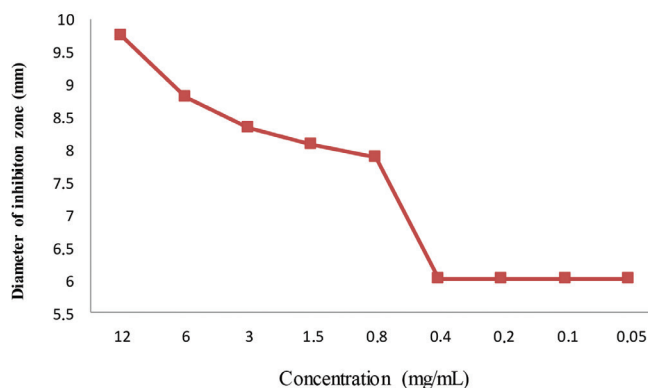


Figure 8. Inhibitory activity of the formula 2 gel preparation of roselle aqueous extracts

Table 3. Inhibitory diameter of formulas 1, 2, and 3 gel preparation of roselle aqueous extracts

Replication	Inhibitory diameter (mm)					
	Formula			Formula base		
	1	2	3	1	2	3
1	10.70	10.10	9.45	7.30	7.05	6.80
2	11.00	9.80	9.70	6.70	6.20	6.05
3	10.70	9.50	9.00	6.50	6.05	6.10
Average	10.80±0.17	9.80±0.30	9.38±0.36	6.83±0.42	6.43±0.54	6.32±0.42

Diameter of reservoir: 6.00 mm

Table 4. The result of the MIC determination of formula 2 gel preparation of roselle aqueous extracts

Rep Conc. (mg/mL)	Inhibitory diameter (mm)							
	Preparation				Base			
	1	2	3	Average	1	2	3	Average
12.00	9.10	9.90	10.25	9.75±0.59	8.45	8.60	9.00	8.68±0.28
6.00	8.60	8.70	9.10	8.80±0.26	8.40	-	8.55	8.47±0.15
3.00	8.35	8.35	8.30	8.33±0.03	8.30	8.30	8.00	8.20±0.17
1.50	8.30	8.25	7.70	8.08±0.33	8.20	8.25	7.60	8.02±0.36
0.80	8.10	8.00	7.50	7.87±0.32	8.00	8.00	7.30	7.77±0.40
0.40	-	-	-	-	-	-	-	-
0.20	-	-	-	-	-	-	-	-
0.10	-	-	-	-	-	-	-	-
0.05	-	-	-	-	-	-	-	-

Diameter of reservoir: 6.00 mm, MIC: Minimum inhibitory concentration

was set as the extract concentration based on the preliminary optimization.

The gel formula was tested using three concentrations of HPMC 6000 (2%, 3%, and 4%, w/w). The ingredients of the preparation formula were propylene glycol as a humectant, roselle aqueous extracts as an active material, sodium benzoate as a preservative, and citrate acid and sodium citrate as buffer. The gel base preparation without the extracts was formulated to identify the effect of roselle aqueous extracts on the physical characteristics of the gel preparation. The gel preparation was made of 250 g with citrate buffer dissolved with pH of 4.505 and each formula was made for one dosage. Replication was not performed due to the limited number of roselle aqueous extracts. It was found that the viscosity of formulas 1, 2, and 3 was 7600, 69.200 and 277.200 cPs, respectively. On the other hand, the viscosity of the gel base of formulas 1, 2, and 3 was 7080, 63.800 and 261.600 cPs, respectively. The presence of roselle aqueous extracts 3% w/w increased the viscosity.

The pH value of formulas 1, 2, and 3 was 3.199 ± 0.003 , 3.165 ± 0.002 , and 3.153 ± 0.006 , respectively. The pH value of the base gel formulas 1, 2, and 3 was 4.556 ± 0.006 , 4.564 ± 0.006 , and 4.570 ± 0.006 , respectively. It can be concluded that the pH of the preparation was much lower than the pH of the gel base even though they were treated by citrate with 0.02 of buffer capacity. This occurred because the buffer capacity failed to hold the pH of the preparation containing 3% (w/w) quite acidic extract of roselle aqueous extracts. The statistical test using one-way ANOVA ($p=0.05$) showed that there was a significant difference among the pH of formulas 1, 2, and 3, as well as the pH of the gel base formulas 1, 2, and 3.

The slope calculation of the regression equation of the dispersion diameter vs. weight of loads to evaluate the dispersal ability of the gel preparation and the base gel of formulas 1, 2, and 3 as depicted in Figure 5 was performed statistically by one-way ANOVA ($p=0.05$). It was found that there was no significant difference in the slope between formulas 1 and 2, but a significant difference was found between formulas 1 and 3 and between formulas 2 and 3. The significant difference in the slope no found between formula 1 and formula gel base; formula 2 and gel base 2; but no significant difference between formula 3 and gel base 3. The capacity of dispersion was denoted by the diameter of maximum dispersion on the adding of certain loads, by which the gel preparation was not dispersed anymore.

According to the slope value and the loads to reach maximum dispersion capacity, it can be concluded that the gel preparation formula dispersed more easily than the gel base, because the viscosity of the gel base is lower than that of the preparation. Since the pH value of the gel preparation was close to 3 and the analysis of the dispersive power was conducted 30 days after the preparation was made, this might have caused the gel preparation to become unstable. The viscosity of the HPMC solution was stable at pH 3-11, but the stability might be disturbed if there is an active material that possesses strong acidity.¹⁵ In the present research, the active material was acid solution of the roselle aqueous extracts.

The inhibitory activity test of the gel base was performed to minimize the effects of the gel component. The activity test aimed to ensure that the growth inhibitory responses were derived from the gel preparation. The bioassay indicated that the gel preparation exhibited higher inhibitory activity than the gel base. The gel preparation of formulas 1, 2, and 3 exhibited growth inhibitory diameter of 10.80 ± 0.17 mm, 9.80 ± 0.30 mm, and 9.38 ± 0.36 mm, respectively. The one-way ANOVA ($p=0.05$) showed that there was a significant difference between formulas 1 and 2, as well as between formulas 1 and 3. There was no significant difference between formulas 2 and 3. The viscosity of the gel preparation might affect the release of the active materials. The higher the viscosity, the more difficult the active materials are released, because of the difficult mobility of the active materials.⁹⁻¹¹

Based on the physical characterization, the selected gel preparation was formula 2, the one containing HPMC 6000 concentration of 3% (w/w) with specification of acid gel preparation with viscosity of 30.000 cPs. The three formulas had pH values that did not meet the specification. Therefore, the formula was selected in accordance with the viscosity value that was close to the specification, namely formula 2. Then the MIC of formula 2 was determined. The preparation was diluted until it reached a concentration of 0.05 mg/mL. The growth inhibitory activity appeared at a dilution of 12.0-0.8 mg/mL. However, the zone was higher than that of the gel base. The statistical test using one-way ANOVA indicated that there was a significant difference between the activity of the gel preparation at 12.0 and 6.0 mg/mL and the gel base. In addition, a significant difference was not found between the inhibitory activity of the gel preparation with concentration of 3.0, 1.5, and 0.8 mg/mL and the gel base. The nonsignificant difference between the gel preparation and the gel base indicated that the inhibitory activity was not caused by the roselle aqueous extracts, but was affected by other components in the formula, such as propylene glycol and sodium benzoate. The smallest concentration showed the existence of a significant difference between the inhibitory activity of the preparation and the gel base at 6.0 mg/mL. In conclusion, the concentration of the roselle aqueous extracts of formula 2 might be recommended for its antibacterial activity toward *Staphylococcus aureus* ATCC 25923. The MIC of the gel preparation was higher than that of the roselle aqueous extracts, because the gelling agent/polymer of the gel preparation might have affected the release of the roselle aqueous extracts from the three preparation formulas.

The potential ratio of formula 2 that inhibited the test bacterium was determined using gentamicin sulfate standard. Correlation between the growth inhibitory diameter of the gentamicin solution at 5-25 ppm against *Staphylococcus aureus* ATCC 25923 and the concentration log of the gentamicin standard was used to determine the potency of the gel preparation through the regression equation: $y=10.2584x+0.5479$ with $r=0.9837$. Formula 2 exhibited growth inhibitory activity against *Staphylococcus aureus* ATCC 25923 equal to gentamicin sulfate standard solution of 7.58 ppm.

CONCLUSION

The HPMC 6000 at 3% (w/w) concentration in roselle aqueous extracts gel preparation gave good physical characteristics. The gel preparation exhibited inhibitory activity against *Staphylococcus aureus* ATCC 25923 depicted by MIC 6.0 mg/mL. Formula 2 is recommended and should be further investigated for implementation in topical preparations.

ACKNOWLEDGMENTS

The authors thank the Faculty of Pharmacy, Airlangga University for supporting facilities and materials.

Conflicts of interest: No conflict of interest was declared by the authors. The authors alone are responsible for the content and writing of the paper.

REFERENCES

- Da-Costa-Rocha I, Bonnlaender B, Sievers H, Pischel I, Heinrich M. *Hibiscus sabdariffa* L. - a phytochemical and pharmacological review. *Food Chem.* 2014;165:424-443.
- Jung EK, Kim YJ, Joo N. Physicochemical properties and antimicrobial activity of Roselle (*Hibiscus sabdariffa* L.). *J Sci Food Agric.* 2013;93:3769-3776.
- Alaga TO, Edema MO, Atayese AO, Bankole MO. Phytochemical and *in vitro* anti-bacterial properties of *Hibiscus sabdariffa* L (Roselle) juice. *Journal of Medicinal Plant Research.* 2014;8:339-344.
- Borras-Linares I, Fernandez-Arroyo S, Arraez-Roman D, Palmeros-Suarez PA, Del Val-Diaz R, Andrade-Gonzales I, Fernandez-Gutierrez A, Gomez-Leyva JF, Segura-Carretero A. Characterization of phenolic compounds, anthocyanidin, antioxidant and antimicrobial activity of 25 varieties of Mexican Roselle (*Hibiscus sabdariffa*). *Ind Crop Prod.* 2015;69:385-394.
- Liu K, Tsao S, Yin M. *In vitro* antibacterial activity of roselle calyx and protocatechuic acid. *Phytother Res.* 2005;19:942-945.
- Navarro VM, Rojas G, Zepeda LG, Aviles M, Fuentes M, Herrera A, Jimenez E. Antifungal and antibacterial activity of four selected Mexican medicinal plants. *Pharm Biol.* 2006;44:297-300.
- Olaleye MT. Cytotoxicity and antibacterial activity of methanolic extract of *Hibiscus sabdariffa*. *Journal of Medicinal Plants Research.* 2007;1:9-13.
- Brookfield Engineering Laboratories, Inc.11 Commerce Boulevard, Middleboro, MA 02346-1031 USA.
- Gendy AM, Jun HW, Kassem AA. *In vitro* release studies of flurbiprofen from different topical formulations. *Drug Dev Ind Pharm.* 2002;28:823-831.
- Ueda CT, Shah VP, Derdzinski K, Ewing G, Flynn G, Maibach H, Marques M, Rytting H, Shaw S, Thakker K, Yacobi A. Topical and transdermal drug products. *Pharmacoepial Forum.* 2009;35:750-764.
- Olejnik A, Goscianska J, Nowak I. Active compounds release from semisolid dosage forms. *J Pharm Sci* 2012;101:4032-4045.
- Marliana SD, Suryanti V, Suyono. Skrining fitokimia dan analisis kromatografi lapis tipis komponen kimia buah labu siam (*Sechium edule* Jacq. Swartz.) dalam ekstrak etanol. *Biofarmasi.* 2015;3:26-31.
- Villani T, Juliani HR, Simon JE, Wu QL. *Hibiscus sabdariffa*: phytochemistry, quality control, and health properties. In: *African Natural Plant Products* 2013;2:210-215.
- Al-Hashimi AG. Antioxidant and antibacterial activities of *Hibiscus sabdariffa* L. extracts. *Afr J Food Sci.* 2012;6:506-511.
- Rowe RC, Sheskey PJ, Quinn ME. *Handbook of Pharmaceutical Excipients* (6th ed). Washington: American Pharmacists Association; 2009:326-328.
- Ford JL. Design and evaluation of hydroxypropyl methyl cellulose matrix tablets for oral controlled release: a historical perspective. In: Timmins P, Pygall S, Melia C, eds. *Hydrophilic Matrix Tablets for Oral Controlled Release.* New York; Springer; 2014:17-51.



Echelon Biosciences

Partner with a leader in biolipid and assay development and research.

echelon-inc.com

OPEN

Turkish Journal of Pharmaceutical Sciences

COUNTRY

Turkey



Universities and research institutions in Turkey

SUBJECT AREA AND CATEGORY

Biochemistry, Genetics and Molecular Biology
Molecular Medicine

Pharmacology, Toxicology and Pharmaceutics
Pharmaceutical Science

PUBLISHER

Turkish Pharmacists Association

H-INDEX

12

PUBLICATION TYPE

Journals

ISSN

1304530X

COVERAGE

2006-2020

INFORMATION

[Homepage](#)

[How to publish in this journal](#)

tbaydar@hacettepe.edu.tr

SCOPE

The Turkish Journal of Pharmaceutical Sciences is the only scientific periodical publication of the Turkish Pharmacists' Association and has been published since April 2004. Turkish Journal of Pharmaceutical Sciences journal is regularly published 6 times in a year (February, April, June, August, October, December). The issuing body of the journal is Galenos Yayinevi/Publishing House level. The aim of Turkish Journal of Pharmaceutical Sciences is to publish original research papers of the highest scientific and clinical value at an international level. The target audience includes specialists and professionals in all fields of pharmaceutical sciences.



Join the conversation about this journal

FIND SIMILAR JOURNALS ?

1
**Indian Journal of
 Pharmaceutical Sciences**
 IND

75%
 similarity

2
**Journal of Research in
 Pharmacy**
 TUR

73%
 similarity

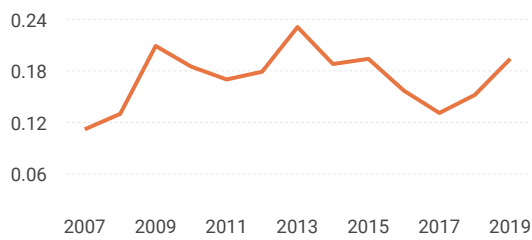
3
**Brazilian Journal of
 Pharmaceutical Sciences**
 BRA

66%
 similarity

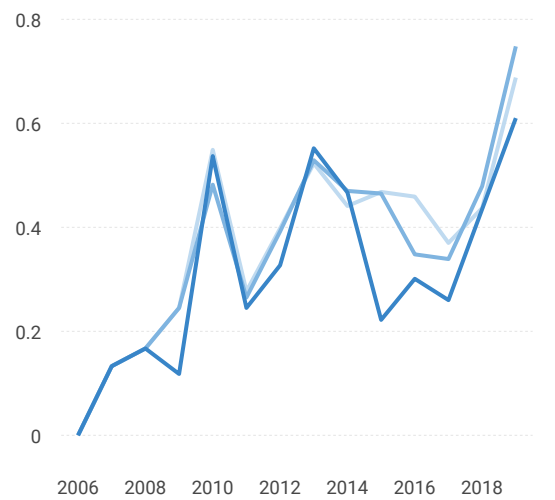
4
**Journal of Applied
 Pharmaceutical Science**
 IND

64%
 similarity

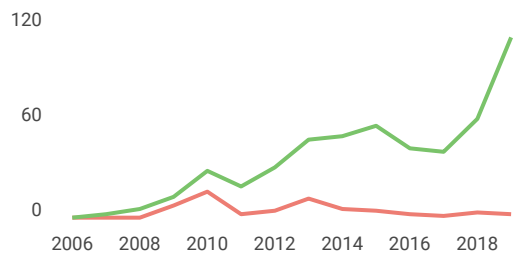
SJR



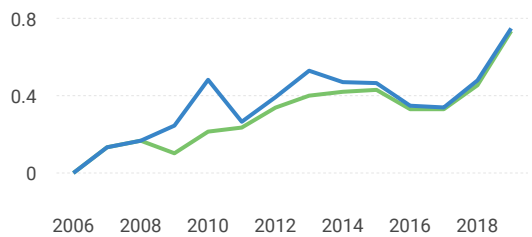
Citations per document



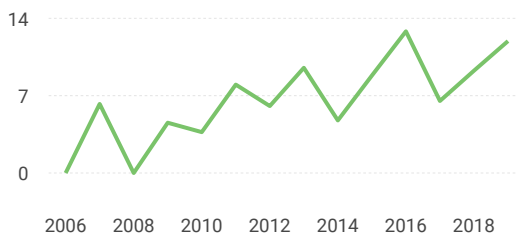
Total Cites Self-Cites



External Cites per Doc Cites per Doc



% International Collaboration



Citable documents Non-citable documents



Cited documents Uncited documents



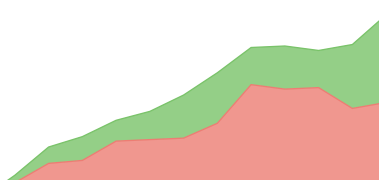
140

70



140

70



Turkish Journal of
Pharmaceutical Sciences

Q3

Pharmaceutical
Science

best quartile

SJR 2019

0.19

powered by scimagojr.com

← Show this widget in
your own website

Just copy the code below
and paste within your html
code:

```
<a href="https://www.scimaç
```

Metrics based on Scopus® data as of April 2020

A **Amina** 9 months ago

Dear sir
Is this journal Q3 rank?

reply



Melanie Ortiz 9 months ago

SCImago Team

Dear Amina, thank you for contacting us. For every journal, the annual value of the SJR is integrated into the distribution of SJR values of all the thematic categories to which the journal belongs. There are more than 300 thematic categories. The position of each journal is different in any category and depends on the performance of the category, in general, and the journal, in particular. We also inform you that the next SCImago's update will be made in June 2020. Best Regards, SCImago Team

K **Kosasih kosasih** 1 year ago

Dear TJPS,

I want to know the APC of your journal.
Thanks in advance.

Best regards,
Kosasih
Universitas Pancasila
Jakarta-Indonesia

reply



Melanie Ortiz 1 year ago

Dear Kosasih,
thank you for contacting us.

We are sorry to tell you that SCImago Journal & Country Rank is not a journal. SJR is a portal with scientometric indicators of journals indexed in Elsevier/Scopus.

Unfortunately, we cannot help you with your request, we suggest you to visit the journal's homepage or contact the journal's editorial staff , so they could inform you more deeply.

Best Regards, SCImago Team

| **isnaeni** 2 years ago

Excellent.

I am very satisfied with the journal service starting from the submission process to the review process

For accepted articles should be given information when published.

Regards

reply

Leave a comment

Name

Email

(will not be published)

I'm not a robot

reCAPTCHA
[Privacy](#) - [Terms](#)

Submit

The users of Scimago Journal & Country Rank have the possibility to dialogue through comments linked to a specific journal. The purpose is to have a forum in which general doubts about the processes of publication in the journal, experiences and other issues derived from the publication of papers are resolved. For topics on particular articles, maintain the dialogue through the usual channels with your editor.

Developed by:



Powered by:



Follow us on [@ScimagoJR](#)

Scimago Lab, Copyright 2007-2020. Data Source: Scopus®

EST MODUS IN REBUS

Horatio (Satire 1,1,106)
