

IJASRM

ISSN : 2455-6378

INTERNATIONAL JOURNAL OF ADVANCED SCIENTIFIC RESEARCH AND MANAGEMENT

VOLUME 3 | ISSUE 10 | OCTOBER 2018

UGC No : 63502

www.ijasrm.com



IJASRM is a scholarly, open access , online international journal which aims to publish peer reviewed original research oriented papers or reviews in the fields of Agriculture, Science, Engineering, Technology and Management Studies. It encourages and provides a medium for the publication of all original research contributions of significant value in all areas of agriculture, science, engineering, and technology and management discipline are welcome.

IJASRM is presided over by a distinguished Board of Directors, Management Consultants, Researchers, Scientists, Engineers and Academicians and is backed by an international review board panel consisting of prominent individuals representing many well-known Universities, Colleges and Corporate World.

We publish high quality research and review papers without delay.

IJASRM is broadly classified into four sections:

Section A : Agriculture Sciences: This section is devoted to the promotion of all fields of Agriculture Sciences like Agriculture Economics, Agronomy, Plant Science, Animal Science, Horticulture, Plant Pathology, Entomology, Seed Technology, Food Science and Technology, Food Nutrition, Agro meteorology, Soil Science etc.

Section B : Basic Sciences and Humanities: It covers all branches of Chemical Sciences, Biological Sciences and Physical Sciences including Biochemistry, Microbiology, Biotechnology, Nanotechnology, Environmental Sciences, Physics, Chemistry, Biology, Mathematics , Statistics , Education, Sociology ,linguistics etc.

Section C : Engineering and Technology: Includes all branches of engineering and technology like Chemical Engineering, Mechanical Engineering, Computer Science and Technology, Electronics and Communication, Agriculture Engineering, Process and Food Engineering, Civil Engineering etc.

Section D : Management Studies: This Section covers all the topics with Business and Economics, finance, Marketing Management, Human Resource Management, Operations Management, Supply Chain Management, Logistics and Warehousing, Retail management and other areas of Management.

[IJASRM is a UGC Approved Journal with Journal ID 63502](#)



[ABOUT US](#)
[EDITORIAL BOARD](#)
[AUTHORS](#)
[CALL FOR PAPERS](#)
[INDEXED](#)
[MEMBERSHIP](#)
[ISSUES](#)
[FAQ](#)
[CONTACT US](#)

EDITORIAL BOARD

Editor-In-Chief

**Dr Monika
Chauhan ,**

FSMS ISO 22000
Certified Lead
Auditor,

Ex Associate
Professor,

Department of Chemical Engineering,

Adama Science and Technology University, Adama , Ethiopia

Email : editor@ijasrm.com ; editor.ijasrm@gmail.com

Editorial Board Members

Dr V P S Arora,

Harmaya University, Ethiopia

Ex Pro Chancellor, Shri Venkateshwara University, India

Dr S K Tewari,

Ex Prof and HOD-Agriculture Economics ,

G B Pant University of Agriculture and Technology,





ANNOUNCEMENT

**Van Yüzüncü Yıl
University, Science
Faculty, Department
of Biology 65080
Tuşba, Van, TURKEY
joins editorial board
of IJASRM**

... ..

UGC APPROVED
JOURNAL NO. 63502
AS PER OLD LIST OF
2018



SUBMIT MANUSCRIPT

Pantnagar, India

Dr Prashant Srivastav,

Cooperative Research Centre for Contamination assessment
& remediation of the Environment (CRC CARE)

University of South Australia,

Mawson Lakes, SA 5095, Australia

Dr Julie Thomas,

University of Arkansas,

Fayetteville, AR 72701, USA

Dr. A. Heidari,

Faculty of Chemistry, California South University (CSU),

Irvine, California, USA

Dr. Adrian Nicolae Branga,

Department of Mathematics and Informatics,

Lucian Blaga University of Sibiu, Romania

Dr. Jiwon S. Sidhu,

Professor and Director, Master's Program in Food Sci. &
Nutrition,

Department of Food Science and Nutrition, College of Life
Sciences, Kuwait University,

Safat, Kuwait

Assoc. Prof. Dr. Burak Kaptaner

Van Yüzüncü Yıl University, Science Faculty, Department of
Biology

65080 Tuşba, Van, TURKEY

Prof Hansel D'Souza,

Adjunct Professor,

S P Jain School of Global Management, Singapore, Dubai,
Sydney, Mumbai

Dr Sandip Banerjee,

Associate Professor,

Department of Animal Breeding and Genetics,

Your Name
(Required)

Your Email
(Required)

Title of Manuscript
(Required)

Upload File (
Required)

Choose File N...n

Submit

PAYMENT INDIAN
AUTHOR

PAY NOW WITH 

PAYMENT FOREIGN
AUTHOR



LIKE US ON
FACEBOOK

Hawassa University, Ethiopia

Dr Jessica Ong Hai Liaw,

Associate Professor,

Faculty of Defence Studies and Management,

National Defence University of Malaysia (UPNM),

Sungai Besi Camp, Kuala Lumpur, Malaysia

Dr Gamal Abd El-Nasser Ahmed Mohamed Said,

Department of Computer and Information Technology , Port
Training Institute (PTI),

Arab Academy for Science ,Technology and Maritime
Transport, Egypt

Dr Ayman Shehata Mohammed Ahmed Osman El-Shazly

Department of Mathematics , Faculty of Science, Assiut
University,

Assiut 71516, Egypt

Dr Mohd Normani Zakaria,

Chairman / Head of Hospital Unit / Assistant Professor /
Consultant Audiologist

Audiology and Speech Pathology Programme,School of
Health Sciences,

Universiti Sains Malaysia

16150 Kubang Kerian,Kelantan, Malaysia

Dr Nishad Nawaz Maditheti,

Kingdom University, Raffia, Bahrain

Dr John Ndikaru Wa Teresia

Department of Criminology and Legal Studies,The Technical
University of Kenya

P. O. Box 57173 – 00200, Nairobi – Kenya

Dr Alireza Valipour Babol

Professor,

Iran Technical and Professional University

Iran



Like Page

Be the first of your friends to like this



**International Journal of
Advanced Scientific
Research and
Management**

about a month ago

Articles invited for upcoming issue
Volume 4 Issue 8, August 2019.

Please submit manuscript at
editor@ijasrm.com

DOI* for each and every manuscript

published in IJASRM. See More

Dr Akhilesh Kamal,

Ex Director (I & C),

Department of Animal Husbandry, Dairying and Fisheries,

Ministry of Agriculture and Farmers Welfare,

Government of India, New Delhi, India

Dr Ashok Kumar,

Ex Head Of Department,

Department of Chemistry, St Johns College,

Agra University, Agra, India

Dr V K Gupta,

Former Principal,

Nagaji Institute of Technology and Management,

Gwalior, India

Dr Derrick M Denis,

Dean, Vaugh School of Agricultural Engineering & Technology,

Sam Higginbottom Institute of Agriculture, Technology &
Sciences

Allahabad , India

Dr Navneet Kumar,

Associate Professor & Head,

Agricultural Process Engineering, College of Agricultural Engg.
& Technology,

Anand Agricultural University, Godhra , Gujarat, India

Dr Shailendra Kumar Yadav,

Director (I/C)

School Of Agriculture , Indira Gandhi National Open
University (IGNOU),

New Delhi, India

Dr. Shiv Singh Tomar,

Dean, School of Science, CPU, Kota

Former Director Extension, Agriculture University, Kota, India

Dr Virendra Kamalvanshi,

Assistant Professor, Department of Agricultural Economics,
Institute of Agricultural Sciences, Banaras Hindu University,
Varanasi, India

Dr Om Prakash Chauhan,

Scientist 'E',
Defence Food Research Laboratory (DFRL)
Defence Research and Development Organization (DRDO)
Siddarthanagar, Mysore, India

Dr Mahendra Kumar Mishra

Dept. of Botany
Govt. College Rehti, Sehore

Dr. Anupama C Dave,

Assistant Professor,
School of Business & Law (SBL),
Navrachana University, Vadodara

Mishra Pankaj S.

Assistant professor,
V.T.Poddar BCA College Pandesara Surat, India

Prof.Kuldeep Bhalerao

Bharati Vidyapeeth's
Institute of Management Studies and Research,
Sector 08, CBD Belapur, Navi Mumbai-400 614

Share This:

Volume 3 Issue 10

- 1. A Study on Financial Provisions for Disaster Management in the State of Andhra Pradesh** [Download](#)
Sanjay Kumar and Dr G Sudarsana Rao
- 2. Neighbour Resolving Partition of a Graph** [Download](#)
Hemalathaa, A. Subramanian
- 3. Synthesis and dielectric relaxations in self-assembled Cadmium Sulphide nanorods dispersed in conducting polymer** [Download](#)
Kousik Dutta
- 4. An Empirical Study of Training & Development and its impact on HR Strategies of Employee- Retention in Hospitality Industry of Uttarakhand** [Download](#)
Dr. Neeraj Aggarwal and Kumar Satyam
- 5. Identification Polymorphism of FSH β -Sub Unit Gene and FSHR Gene in Madura Cattle Results of Artificial Insemination with Limousin Cattle with PCR-RFLP Technique** [Download](#) ✓
Budi Utomo
- 6. Consumer Attitude towards Online Shopping – A Case Study** [Download](#)
Poonam Deshpabhu – Sadekar and Naila Pereira
- 7. Computer Simulation of a D.I C.I Engine for Performance Analysis using DieselBiodiesel Blends** [Download](#)
T.Raja, R.Prabhakar, R.Chandrasekar, R. Venkatesh
- 8. The Emotional Competence of Women Teachers With Reference To Their Social Background** [Download](#)
Dr. M.A. Khaliq and Manisha Digambarrao Asore
- 9. Determination of similar and dissimilar use cases for new agile project by applying case based reasoning** [Download](#)
R.Thirumalai Selvi and R.Manjula
- 10. Soil Analysis for Macro and Micro Nutrients from the Bamboo (Ochlandra) growing forest areas in Thiruvananthapuram, Kerala** [Download](#)
Nisha, S.A., Grima, G. and Santhoshkumar, R.
- 11. Role of Edaphic Factors on the Population Density of Soil Inhabiting Collembola and Oribatid mites in *Acacia* Plantation of Cachar District, Assam** [Download](#)
Rajeeb Chetia Pator and Dulal Chandra Ray
- 12. Antifungal Activity of *M. pudica* L. Against Selected Human Pathogens** [Download](#)
Krishnamurthy Vijayalakshmi and Rajangam Udayakumar
- 13. FUZZY 10^k - BASED GRACEFUL LABELING OF GRAPHS RELATED TO CIRCUITS** [Download](#)
A.Solairaju, T.Narppasalai Arasu
- 14. Extraction and FTIR characterization of chitosan from *Portunus pelagicus* shell wastes** [Download](#)
Vigneshwari, V. Gokula
- 15. Security framework against denial of service attack on cognitive radio networks** [Download](#)
Meenakshi Malhotra, Dr. Inderdeep Kaur Aulakh
- 16. Characteristics on Heat Treatment of AA6063 Aluminum Extrusion Based ZrO₂ Molecule Reinforced MMC** [Download](#)
Dhandapani
- 17. Enhanced Feedback Sessions Based Data Search Goals using Soft Clustering Technique** [Download](#)
T. Thamodaren
- 18. A Study On Consumer Perception Towards Packaged Drinking Water With Special Reference To Chickballapur Town, Karnataka, India** [Download](#)
Harish K.S and N. Sandhya
- 19. Photoconductivity Decay Kinetics of Acetylferrocene: Effect of Temperature** [Download](#)
Raghu Nath Bera

20. Determination of Elemental Concentration of Plant Samples of Panipat, Yamuna Nagar, Hisar Thermal Power Plants and Nearby Areas Using AAS and ICP-AES

Techniques [Download](#)

Atul Kumar Ahuja, Varinderjit Singh and Prem Singh

21. Lack of association between COMT Val158met polymorphism and Juvenile Myoclonic Epilepsy [Download](#)

I.L Silva, B.P Santos, E.D Santos Júnior, Y.D Santos, G.F.C Santos, D.H Almeida, M.A Araújo

22. Endophytic Fungi as latent Pathogens in *Eichhornia Crassipes* (Mart.) Solms [Download](#)

Soumya P. R, Rukshana Begum S and Tamil Selvi K. S

23. Depletion Of Glycogen In Different Tissues Of Freshwater Bivalve, *Lamellidens Marginalis* Exposed To Tributyltin Chloride [Download](#)

Jitendra Jagtap

24. Low cost green technological synthesis, spectral, antibacterial, antifungal and anti-inflammatory activities of Cr(III) and Fe(II) complexes with some bio-active ligands [Download](#)

Gomadurai T, Rajasekar K, Balasubramanian S, Selvarani R, Veeravel C & Geetha R

25. Optimization of CNC turning operation parameters for EN32M steel by using TAGUCHI method [Download](#)

R.Venkatesh, G.Nagarajan, R.Chandrasekar, T. Raja

26. Experimental Investigation and Comparison Of Mechanical Behavior Of Water Hyacinth Composite Materials

[Download](#)

J.Sathees Babu, C. Thangavel

27. A Review Paper on Identification, Analysis and Management of Risks Involved in Construction of a Highway Project [Download](#)

Mohammad Afzal Akhtar and Sarthak Singh Rajput

28. Effect of Co²⁺ and Cr³⁺ Substituent's on Elastic Properties of Ni-Zn Ferrite [Download](#)

U. M. Mandle, L. A. Dhale, B. L. Shinde, K. S. Lohar

29. Biosynthesis and characterization of Magnetic (Fe₃O₄) Iron oxide nanoparticles from a red seaweed *gracilaria edulis* and its antimicrobial activity [Download](#)

Subhashini G, Ruban P, Daniel T

30. Influence of Age on the Grocery Shopping Behavior in Selected Cities of Karnataka, India [Download](#)

Prof. Hariprakash U.P, Dr. Beeran Moidin B.M

31. Establishing the calculating program for rock stresses around a petroleum wellbore [Download](#)

Le Nguyen Hai NAM, Do Quang KHANH, Tran Nguyen Thien TAM and Hoang Trong QUANG

32. Unravelling the Brand Attractiveness Quotient In Processed Food Industry [Download](#)

Dr Rinalini Pathak Kakati and Anubhuti Deorah

33. Study of antibacterial activity with stem extracts of *Achyranthes aspera*, L. [Download](#)

Arpita Panda, Goutam Sabat and B. K. Mohanty

34. Photocatalytic degradation of catechol over ZnO powder the influence of peroxomonosulphate and peroxodisulphate on the reaction rate [Download](#)

Maria Berjilia, S. Manikandan and K.B. Dhanalakshmi

35. Impact of Performance Appraisal on employees in service sector enterprises of Kerala [Download](#)

Mr. Sujith A S, Dr. Deepu Jose Sebastian

36. Perception of households of kolkata about e-wastes and its management [Download](#)

Shelley Pandit, Dr. Dipankar Dey

37. Search Operations Via Swarm Based Robots [Download](#)

Ms. J.Gowthamy, Anisha Rajesh, Disha Dikshita Behera, Anusha Chattopadhyay and B.Mathangi

38. The synthesis of silver nanowires in anodic Aluminum Oxide template [Download](#)

Nguyen Van Dan, Tran Huy Nam and Tran Thanh Tam

39. The role of Silibinin as a cure in LPS/D-GalN induced fulminant hepatic failure in rats [Download](#)

Reem Mohammed Hashem , Kamel Mohammed Hassanin, Laila Ahmed Rashed and Ahmed Mahmoud Samy

40. The Past and Future Trends of Econophysics [Download](#)

Imlisunup

41. Overview of Solar Robot [Download](#)

Sohail Akhter, Shamama Ahmad, Mohd Muazzam

42. Antipathetic Impacts of Sulphur Dioxide: A case study of Indian Scenario by MODIS Analysis

[Download](#)

Jacob Joshua and Sujatha C.H

43. Behavioral Intention to Adopt Blockchain Technology: Viewpoint of the Banking Institutions in Malaysia [Download](#)

Hayati Yusof, Mai Farhana Mior Badrul Munir, Zulnurhaini Zolkaply, Chin Li Jing, Chooi Yu Hao, Ding Swee Ying, Lee Seang Zheng, Ling Yuh Seng, Tan Kok Leong

44. CFD Analysis of Aerodynamic Interference Effect for a Multibody Launch

Vehicle [Download](#)

M.Senthil Kumar and R.Gowrishankar

45. Assessment of airborne microbes in different indoor atmosphere [Download](#)

Amthul Azeez and Chandana. Y. J.

46. An Inventory of Four New Angiospermic Climbers Record from Coastal Districts of Odisha [Download](#)

Gouri Sankar Jaga Prakash Jena, Ramakanta Mishra and Kunja Bihari Satapathy

47. SYNTHESIS, CHARACTERIZATION, *INVITRO* ANTIDIABETIC ACTIVITY AND ANTIMITOTIC ACTIVITY OF SOME ALKYL/HALO SUBSTITUTED CYANOACETYL HYDRAZONE DERIVATIVES [Download](#)

K.Sundaresan and K.Tharini

48. Fertility Differential by Women Employment Status in Murshidabad District, West Bengal [Download](#)

Md Asgar Hossain Chowdhury and Md Akhtarul Hoque

Identification Polymorphism of FSH β -Sub Unit Gene and FSHR Gene in Madura Cattle Results of Artificial Insemination with Limousin Cattle with PCR-RFLP Technique

Budi Utomo

Department of Reproduction Veteriner, Faculty of Veterinary Medicine, Universitas Airlangga, Surabaya, Indonesia;

Abstract

The aim of this study was estimate of polymorphisms located in the FSH β sub unite and the receptor Follicle Stimulating Hormone (FSHR). Fourteen blood samples were collected from Madura cattle results of Artificial Insemination with Limousin Cattle called "Madrasin" cattle which lived in Bangkalan, Madura Island. The DNA was extracted following standard methods. The purified DNA was subjected to PCR-RFLP techniques to identify polymorphisms of the FSH β sub unite and the receptor Follicle Stimulating Hormone (FSHR) genes in "Madrasin" cattle ecotypes. The *Polymerase Chain Reaction – Restriction Fragment Length Polymorphism* (PCR-RFLP) amplified fragments of FSH β sub unite (313 bp) were digested with restriction enzymes PstI resulting in 255 bp, 237 bp and 150 bp fragments, that produced 2 allelic is A and B. The allelic A and B frequencies for FSH β sub unite of "Madrasin" cattle is 0,50 and 0,50. While, The *Polymerase Chain Reaction – Restriction Fragment Length Polymorphism* (PCR-RFLP) amplified fragments of FSHR (306 bp) were digested with restriction enzymes AluI resulting become two homozygote genotypes, there are GG in the 243 bp, CC in the 243 bp and 193 bp. So the conclusion of this research was that FSH and FSHR genes not changed.

Key words: *Polymorphisim, MAS, FSH β -sub unite, FSHR, PCR-RFLP*

1. Introduction

Madura cattle are one of the local Indonesian cattle that develops on the island of Madura and surrounding islands. Morphologically, Madura cattle have almost the same characteristics as Bali

cattle except their smaller body size and horn. Skin color in male and female Madura cows is more brown than Bali cattle, lower legs to knees (Rouse, J.E, 1972). In addition, Madura cattle are more resistant to hot weather, food-efficient, have good meat quality, and more resistant to parasites (Payne and Hodges, 1997).

Exploitation of Madura cattle through wider crossing with exotic cattle will have a change in phenotypic and genetic traits. Crosses are carried out by farmers to obtain superior performance, especially at the speed of growth in body weight and reproductive power. Madrasin cattle have exterior characteristics that resemble Madura and Limousin cattle or a combination of the characteristics of the two cattles. Growth and Performance of Madrasin cattle is a combination of Madura and Limousin cattle (Volkandari, *et al.* 2013).

Progress in the field of molecular biology provides new opportunities in the effort to detect the occurrence of genetic variations (polymorphism) as a basis for improving genetic quality in livestock. Molecular techniques that are potentially used to detect these variations are Restriction Fragment Length Polymorphism (RFLP). With the existence of effective and accurate technology through the use of diagnoses based on deoxyribonucleic acid (DNA), it will greatly assist the breeding program of cattle. Provision of genetic maps through recombinant DNA methods can help breeding programs through molecular data obtained, which regulates the characteristics of production (Hetzl, D.J.S. 1989).

Gene products in the form of hormones (bioregulator) will affect the process of regulating metabolism and appearance of livestock

morphology. Growth hormone as one of the gene products has a major effect on growth, lactation and development of mammary glands in cattle (Hoj, *et al.* 1993a, b). In addition to growth hormones, it is also necessary to do research on the reproductive side, to obtain a picture of reproductive hormone polymorphism in cross-bred calves with Limousin cattle. Follicle Stimulating Hormone (FSH) is a glycoprotein hormone produced by the pituitary gland, which functions to regulate reproduction in mammals, both male and female (Grigorova, *et al.* 2007). The FSH gene is one of the important things in regulating the properties of cattle that have high economic value, so the FSH gene can be a candidate gene in the Marked Assisted Selection (MAS) program in cattle.

The FSH hormone consists of α and β -sub units. β -sub units play a role in determining the specificity of bonds with receptors (FSHR) (Fan and Hendrickson, 2005). FSH receptors are needed by FSH in the ovary to start and maintain follicular development by binding to specific receptors (FSH Receptor) on the surface of granulosa cells. The FSHR gene has an important role in ovarian stimulation and its physiological knowledge can be used to predict differences in FSHR function and ovarian response to FSH.

Therefore, genetic studies of madura cows that have been crossed with the Limousins are interesting to do to see the calves produced have good quality in terms of their body and reproductive growth, especially to be used as a reference as superior seeds.

2. Material and Methods

Research Materials

The main ingredients are DNA samples taken from whole blood of Madura cattle from artificial insemination with Limousin cement from Bangkalan, Madura, Indonesia with a total of 14 samples. Supporting materials include: Primary FSH β -subunits, primary receptor FSH, HaeIII Restriction Enzymes, Restriction Enzymes, DNA Extraction Materials (Proteinase K, Absolute Ethanol, Buffer Lysis, Wash Buffers A & B), PCR Materials (dNTP mix, Taq DNA polymerase enzymes), Electrophoresis (Triss Base, boric acid, agarose, Na₂ EDTA, Ethidium bromide, DNA Markers, DNA Loading dye), tissue and plastic mica.

Research Equipments

The tools used include: DNA Extraction Kit, venoject, vakuttainer tube, centrifuge, cooling device, small large eppendorf tube, agarose gel,

micropipette, tip, tube rack, electrophoresis, autoclave, scales, gloves.

Collection of Blood Samples

Blood samples were obtained from Bangkalan, Madura, Indonesia. Blood sampling was carried out by collecting about 5 ml of blood samples from cattle through the jugular vein using venojet and vacuttainer tubes with EDTA and then stored at 4°C.

Table 1. Primers were used to amplify the FSH β -sub-unit and FSHR Gen

Target	Name	Primer	An
FSH β -sub unit	F	5'CTTCCAGACTACTGTAA CTCATC'3	6 3
	R	5'GTAGGCAGTCAAAGCAT CCG'3	
FSH Receptor	F	5'CTGCCTCCCTCAAGGTG CCCCTC'3	6 0
	R	5'AGTTCCTGGTCAAATGT CTTAGGGGG'3	

Ket : An = annealing temperature, (Dai, *et al.* 2009).

DNA Extraction

DNA was isolated and purified using the QIAamp Mini spin column DNA Extraction Kit by following the extraction protocol provided. A total of 200 μ l of blood samples were lysed by adding 200 μ l of lysis buffer solution and 20 μ l of proteinase K (10 mg / ml), the mixture was then incubated at 56°C for 60 minutes in a waterbath shaker. After incubation the solution is then added 200 μ l of absolute ethanol 96% and centrifuged 8,000 x g for 1 minute.

DNA purification is done by spin column method with the addition of 500 μ l of wash buffer I washing solution which is then followed by centrifugation at 8,000 x g for 1 minute. After the supernatant is removed, DNA is then washed again with 500 μ l of wash buffer II and centrifuged at 14,000 x g for 3 minutes. After the supernatant is removed, the DNA is then dissolved in 200 μ l of elution buffer and centrifuged at 8,000 x g for the extracted DNA to be stored and stored at -20 ° C.

PCR-RFLP Technique

The composition of the PCR reaction was conditioned on a reaction volume of 25 μ l consisting of 100 ng of DNA, 0.25 mM of each primer, 150 μ M dNTP, 2.5 mM Mg²⁺, 0.5 Taq DNA polymerase and 1x buffer. The PCR engine

conditions began with initial denaturation at 94°C x 2 minutes, followed by 35 subsequent cycles of 94°C x 45 seconds denaturation, with annealing temperature: 63°C x 45 seconds (FSH) and 60°C x 45 seconds (FSHR), followed by one final extension cycle at 72°C for 5 minutes using GeneAmp PCR System 2400 ThermoCycler (Perkin Elmer). PCR products were then electrophoresed on 1.5% agarose gel with 1x TBE buffer (89 mM Tris, 89 mM boric acid, 2 mM Na2EDTA) containing 100 ng / ml ethidium bromide. Then visualized in the UV transiluminator (gel documentation system). Alleles are determined by interpreting bands in the most remote form of migration to the anode pole as 1 allele, 2 alleles, etc.

The PCR products obtained from each target gene were then analyzed using RFLP through cutting using restriction enzymes which had cutting sites on the FSH β-subunit gene | *PstI* and *AluI* for the FSHR gene. Total of 4 μl of PCR product DNA was added 0.5 μl, then incubated for 17 hours at 37°C.

Sequencing

Determination of nucleotide sequences of the FSH-sub-unit and FSHR genes was carried out by DNA sequencing, which was the final step to obtain the nucleotide sequence data from fragments resulting from the PCR -RFLP multiplication. DNA bands that have been extracted on agarose gel as PCR-RFLP product are used as molds in sequencing reactions using forward and reverse primers such as during amplification.

Data Analysis

The diversity of genotypes of each individual can be determined from the DNA bands of genes found. Each sample is compared based on the same marker and the allele frequency is calculated. The frequency of alleles can be calculated using the formula Nei and Kumar (2000). Analysis of sequencing data using UGENE 1.21.0 software.

3. Results and Discussion

The PCR Result of FSH Gene

From 14 Madrasin cattle blood samples PCR was carried out to detect the presence of FSH gene, the results of PCR showed that there were 14 bands of FSH gene using the FSH gene primer. Positive results are shown in Figure 1. as follows.

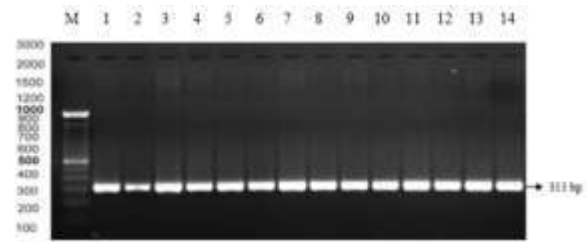


Figure 1. Results of PCR electrophoresis with the primary Madrasin cattle FSH gene. Lane M: Marker, Lane 1-14 is the result of electrophoresis of Madrasin cattle FSH gene with a length of 313bp.

The amplification of the FSH beta sub-unit gene segment was successful for 313 bp using a pair of primers according to the results of (Dai, *et al.* 2009). The condition of PCR used in thermocycler machines, uses an initial denaturation temperature of 94°C for 5 minutes, denaturation of 94°C, primary or annealing attachment of 63°C for 45 seconds, attachment of new DNA at 72°C for 1 minute, and a temperature of 72°C final elongation for 5 minutes. PCR results from Madrasin cattle FSH gene showed a band of 313 bp, this is in accordance with the band in the genome library (Genbank Access Number J00008; Balogh, *et al.* 2008).

Follicel Stimulating Hormone (FSH) is a hormone derived from basophil cells in anterior pituitary which is very instrumental in the process of reproduction. FSH itself is a hormone candidate that plays a role in regulating reproduction, and growing follicles (Ge, *et al.* 2003). FSH gene becomes one of the important things in regulating fertility or fertility in livestock with high economic value, so that the FSH gene becomes a candidate gene in the Marked Assisted Selection (MAS) program in cattle.

The PCR-RFLP Results of FSH Gene

The results of the RFLP were 14 FSH gene samples divided into 3 bands, namely 255 bp, 237 bp, and 150 bp. The RFLP results of Madrasin cattle FSH gene can be seen in Figure 2. as follows.

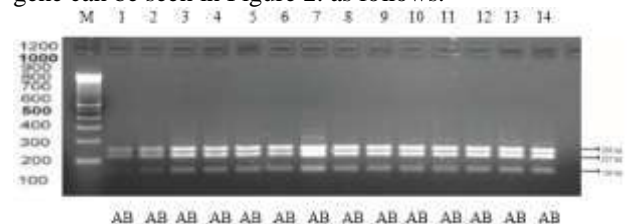


Figure 2. Electrophoresis results of PCR-RFLP FSH gene Madrasin cattle using *PstI* enzyme restriction. Lane M: Marker, Lane 1-14 (255 bp, 237 bp, 150bp).

Amplification of Madrasin cattle FSH gene using PCR method is known to have a length of 313 bp, which will be continued by cutting the site of Madrasin cattle FSH gene using *AluI* restriction enzyme. Based on the RFLP results, 255bp, 237bp, and 150bp PCR products produced 2 alleles, namely A and B, whereas in Madura cattle, only 1 allele, allele B. The restriction enzyme can recognize the FSH gene at the site of cutting, this is because the DNA sequence at the cutting site does not undergo mutation. The A and B alleles themselves are indicated by the length of the fragment (150 bp, 237 bp, and 255 bp).

Frekuensi Genotipe and Alel of FSH Gene

Table 2. Genotype frequency and alleles FSH gene in Madrasin cattle (genotype and allele frequencies of Madrasin cattle). Description AA, AB and BB = heterozygous genotypes, A and B = alleles

Bangsa (breed)	N	Frekuensi genotip (genotype frequency)			Frekuensi alel (allele frequency)	
		AB		A	B	
		AA	BB			
Madrasin	14	0,00	1,00	0,00	0,50	0,50
Madura	10	0,00	0,00	1,00	1,00	0,00

Analysis results showed that allele A frequency was the same as B allele frequency, the frequency of A and B alleles in Madrasin cattles were 0.50 and 0.50 respectively (table 2) while the frequency of genotypes AB and BB were 1, 00 and 0.00. Based on these differences, it was suspected that there was no change in allele frequency and genotype between Madura cattles and Madrasin cattles due to crossbreeding with Limousin cattle.

The PCR Results of FSHR Gene

The results of amplification of 14 Madrasin Cattle blood in Bangkalan, Madura, Indonesia were carried out by PCR method, resulting in 14 positive DNA samples using the FSHR gene primer. The positive results of visualization of electrophoresis can be seen in Figure 3.

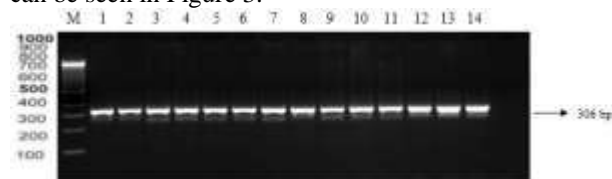


Figure 3. PCR electrophoresis results with the primary Madrasin cattle FSHR gene. Lane M: Marker, Lane 1-14 is the result of electrophoresis of Madrasin cattle FSHR gene with a length of 306bp.

The PCR results of FSH receptor gene in Madrasin cattle with *AluI* enzyme is 306 bp. The condition of the thermocycler machine on the FSH receptor gene amplification is 94°C initial denaturation for 5 minutes, 94°C denaturation for 45 seconds, annealing temperature of 60°C for 45 seconds, a new DNA elongation temperature of 72°C for 5 minutes.

Based on the results of blood amplification using the Polymerase Chain Reaction (PCR) method, it was continued by electrophoresis reading with positive samples. The FSHR gene found in all Madrasin cattle blood samples can be detected by PCR with the product length of the FSHR gene amplification is 306 bp which is located on exon 10 (Ishak, 2013). The temperature and duration of the annealing also determine the level of specificity of the amplification results and other factors that play a role in determining the success of amplification are the quality or level of DNA purity used as DNA templates.

The FSHR gene has an important role in ovarian stimulation and its physiological knowledge can be used to predict differences in FSHR function and ovarian response to FSH. Simoni, *et al.* 1999 reported that changes in DNA sequences could influence FSHR gene activation and they also showed that genotypes play an important role in ovarian physiology. The follicle that stimulates the hormone begins and maintains follicular development by binding to its specific receptors on the surface of granulosa cells in the ovary (Simoni, *et al.* 1999; Dierich, *et al.* 1998). This binding allows activation of the follicular stimulation hormone coding gene (Simoni, *et al.* 1999). The importance of identifying DNA polymorphisms lies in their relationship to productive and reproductive genotypes (Allan, *et al.* 2007; Tambasco, *et al.* 2000).

The PCR-RFLP of FSHR Gene

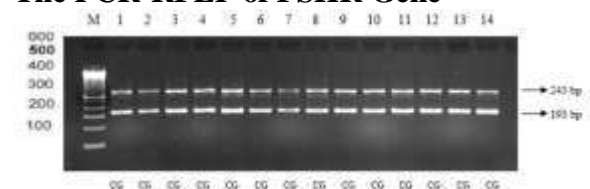


Figure 4. Electrophoresis results of PCR-RFLP FSHR gene Madrasin cattle using *AluI* enzyme restriction. Lane M: Marker, Lane 1-14 (243 bp and 193 bp).

Based on the results of the treatment using the PRC-RFLP the amplified FSHR gene segment contained *AluI* enzyme are two cutting sites known as two genotypes, namely GG visualized on 1 band

(243bp) and visualized CC on 2 bands (243bp and 193bp) marked with a 306 bp fragment cut into two parts along 243 bp and 193 bp. The fragment of the FSHR gene which has an *AluI* enzyme cutting site will indicate that there is no mutation but if there is no cutting site which is indicated by the absence of cutting by the *AluI* enzyme it can be stated that there is a mutation in the FSHR fragment site (Nawal, *et al.* 2016).

Diversity in the *AluI* FSHR gene segment is thought to be due to mutations or changes in bases causing changes in serine amino acids to glycine. These changes cause the cutting site not to be recognized by the *AluI* enzyme, resulting in a 193 bp fragment known as the G allele (Ge, *et al.* 2003). Genotyping results in Madrasin cattle FSHR gene segment produced two types of truncated fragments namely CG genotype which was shown as 243 bp and 193 bp fragments and fragments cut into one band were called CG genotypes.

The characterization of the allelic variability of the FSHR gene in different cattle breeds allows taking advantage of heterozygosis and selecting individuals that are carriers of specific alleles in loci of reproductive importance. The *FSHR* gene has an important role in ovarian stimulation and the knowledge of its physiology can be used to predict differences in the function of the FSHR and the ovarian response to FSH (Nawal, *et al.* 2016).

Frekuensi Genotipe and Alel of FSHR Gene

Table 3. Genotype and allele frequencies of the FSHR gene in Madrasin cattle (genotype and allele frequencies of Madrasin cattle). Description of CC, CG and GG = heterozygous genotypes, C and G = alleles

Bangsa (breed)	N	Frekuensi genotip (<i>genotype frequency</i>)		Frekuensi alel (<i>allele frequency</i>)	
		CC	CG	C	G
Madrasin	14	0,00	1,00	0,50	0,50
Madura	10	0,00	0,00	1,00	0,00

The results of *AluI* FSHR gene analysis showed that the C allele frequency was the same as the G allele frequency, the frequency of C and G alleles in Madrasin cattles were 0.50 and 0.50 respectively (table 3) while the CG and GG genotypes were 1, 00 and 0.00. Based on these differences, it was suspected that there was no change in allele frequency and genotype between Madura cattles

and Madrasin cattles due to crossbreeding with Limousin cattle.

4. Conclusion

Therefore, it can be concluded that the isolates in this research that that FSH and FSHR genes not changed.

Competing Interests

The authors declare that they have no competing interests.

Ethical approval

The research does not need ethical approval. However, samples were collected as per standart collection methods without any harm and stress to the animals.

References

- [1] Rouse, J.E. 1972. Cattle of Africa and Asia. Oklahoma: University of Oklahoma Press.
- [2] Payne ,W.J.A., J. Hodges. 1997. Tropical Cattle: Origin, Breed, and Breeding Policies. Oxford: Blackwell Science Ltd.
- [3] Volkandari, S. D., Hartatik, T., and Sumadi. 2013. Growth Hormone (GH) Polymorphism of Limura Cattle. Buletin Peternakan. 37(2): 67 –73
- [4] Hetzel, D.J.S. 1989. Construction of a bovine gene map.Proceedings of the New Zealand Society of Animal Production49: 53-56.
- [5] Hoj, S., M. Fredholm, and V.H. Nielsen. 1993a. Growth hormonegene polymorphism associated with selection for milk fatproduction in lines of cattle. Animal Genetics 24: 91-96.
- [6] Hoj, S., P. Lovendahl, and K. Sejrsen. 1993b. Possible associationof growth hormon gene polymorphisms with growth hormonereleasin calves from lines selected for high and low milk fatyield. Acta Agriculture of Scandinavia, section Animal Science43: 12-135.
- [7] Grigorova, M., Rull, K., Laan, M. 2007. Haplotype structure of FSHB, the beta subunit gene for fertility-associated follicle-stimulating hormone: Possible influence of balancing selection. Ann of Hum Gen 71: 18 – 28

- [8] Fan, Q.R. and W.A. Hendrickson. 2005. Structure of human follicle-stimulating hormone complex with its receptor. *Nature* 433:269–277.
- [9] Dai, L., Z. Zhao, R. Zhao, S. Xiao, H. Jiang, X. Yue, X. Li, Y. Gao, J. Liu and J. Zhang. 2009. Effects of novel single nucleotide polymorphisms of the FSH beta-subunit gene on semen quality and fertility in bulls. *Anim. Rep. Sci.* 114: 14–22.
- [10] Genbank Access Number J00008
- [11] Balogh O et al. 2008. Interrelationships of growth hormone *AluI* polymorphism, insulin resistance, milk production and reproductive performance in Holstein-Friesian cows. *Vet Med* 11 : 604 – 616.
- [12] Ge, W., M. E. Davis, H.C. Hines, K.M. Irvin and R.C.M. Simmen. 2003. Association of single nucleotide polymorphisms in the growth hormone and growth hormone receptor genes with blood serum insulin-like growth factor I concentration and growth traits in Angus cattle. *J. Anim. Sci.* 81: 641-648.
- [13] Ishak, A.B.S. 2012. Identifikasi Keragaman Gen FSH Sub-Unit Beta, Gen FSH Reseptor, dan Gen GH Sapi Bali Jantan Sebagai Penanda Kualitas Sperma. Thesis. Institut Pertanian Bogor. 31 – 40
- [14] M. J. Simoni, W. Gromoll, A. Hoppner, T. Kamischke, D. Krafft, E. Sthle and Nieschlag, "Mutational analysis of the follicle-stimulating hormone (FSH) receptor in normal and infertile men: Identification and characterization of two discrete FSH receptor isoforms." *J. Clin. Endocrinol. Metab.* 84: 75-755, 1999
- [15] M. Dierich, L. Ram Sairam, G.M. Monaco, A. Fimia, M. Gansmuller, LeMeur, and P. Sassone-Corsi, "Impairing follicle-stimulating hormone [FSH] signalling in vivo; Targeted disruption of the FSH receptor leads to aberrant gametogenesis and hormonal imbalance." *Proc. Nat. Acad. Sci., USA*, 1998, 95:136113617. PMID:9811848
- [16] M.F. Allan, R.M. Thallman, R.A.; Cushman, S.E. Echterkamp and S.N. White et al. "Association of a single nucleotide polymorphism in *SPP1* with growth traits and twinning in a cattle population selected for twinning rate." *J. Anim. Sci.*, 85: 341-347, 2007.
- [17] D. D. Tambasco, M. M. Alencar, L.L. Coutinho. and A.J. Tambasco. "Molecular characterization of a Nellore beef cattle sample using microsatellites and candidate genes." *Rev. Bras Zootec.* 29: 1044-1049 units. *World Animal Review*, 65(2), pp. 2 – 10, 2000.
- [18] Nawal N. Omera, Nahid Gornas, Siham A. Rahmatalla, Mohamed-Khair A. Ahmed. 2016. Genetic Characterization of Indigenous Sudanese Cattle Using *FSHR* and *LHR* Genes. *American Scientific Research Journal for Engineering, Technology, and Sciences (ASRJETS)*. 24: 1 – 9