

# Resuvastatin is Superior Compared to Simvastatin and Atorvastatin to Induce Endhothelial Progenitor Cells Migration

*by* Yudi Her Oktaviono

---

**Submission date:** 11-Apr-2020 04:21PM (UTC+0800)

**Submission ID:** 1295061757

**File name:** orvastatin\_to\_Induce\_Endhothelial\_Progenitor\_Cells\_Migration.pdf (1.07M)

**Word count:** 3771

**Character count:** 21270

# Rosuvastatin is Superior Compared to Simvastatin and Atorvastatin to Induce Endothelial Progenitor Cells Migration

YUDI HER OKTAVIONO<sup>1</sup>, MAKHYAN JIBRIL AL FARABI<sup>2</sup>, FERANTI MEUTHIA<sup>3</sup>, TYAGITA VERDENA RANI SAVITRI<sup>4</sup>, DJOKO SOEMANTRI<sup>5</sup>

## ABSTRACT

**Introduction:** Statins has shown to improve Endothelial Progenitor Cells (EPCs) function, however no comparison between various statins effectivity to induce EPCs migration.

**Aim:** This study compared simvastatin, atorvastatin and rosuvastatin treatment on impaired EPCs from Coronary Artery Disease (CAD) patients.

**Materials and Methods:** EPCs were isolated, cultivated and divided into untreated group (control), simvastatin (dose 0.1, 0.25, 0.5 mM), atorvastatin (0.1, 0.25, 0.5 mM), rosuvastatin (0.1, 0.25, 0.5 mM). EPCs migration was evaluated with boyden chamber assay. ANOVA, pearson correlation and linear regression test were done using SPSS 25.0.

**Results:** This research showed that simvastatin, atorvastatin, and rosuvastatin increased EPCs migration in dose dependent manner ( $p < 0.05$ ). Regression test showed that simvastatin treatment was responsible for 92.9% of EPCs migration, while atorvastatin was 75.5% and rosuvastatin was 65.6%. Rosuvastatin treatment dose 0.5 mM have the highest EPCs migration effect ( $195,750.00 \pm 5,809.48$ ) compared to simvastatin ( $123,750.00 \pm 9,367.50$ ,  $p < 0.001$ ) and atorvastatin ( $156,375.00 \pm 12,392.03$ ,  $p < 0.001$ ) at the same dose.

**Conclusion:** Rosuvastatin treatment has higher EPCs migration effect compared to simvastatin and atorvastatin. This suggests that rosuvastatin might be preferable to improve EPCs migration in CAD patients.

**Keywords:** Coronary artery disease, Impaired EPCs, Statins, Vascular regeneration

## INTRODUCTION

Coronary Artery Disease (CAD) is one of the top causes of mortality and morbidity worldwide. CAD is the major cause of death for person aged 35 and over [1-3]. Indonesian Ministry of Health research showed that CAD is responsible for 12.9% of the mortality [4]. In patients with CAD, EPCs proliferation and migration capability are significantly reduced as the disease progresses. Thus, further reducing EPCs capability to repair the vascular damage [5,6]. Patients with low EPCs count and impaired migration activity also have a higher incidence of cardiovascular events, mortality, and morbidity compared to patients with higher EPCs count and migration [7]. Multiple pathways is suggested to be responsible for EPCs impairment in the CAD patients. It is suggested that oxidative stress play significant roles in EPCs impairment through intracellular damage and redox balance disruption [8]. Disruption of intracellular redox environment has a critical role in controlling apoptosis, proliferation, self-renewal, senescence, and differentiation of EPCs thus predisposing to the development of vascular pathology [9].

Statins or HMG-CoA reductase inhibitors have been well established as safe and effective treatment in reducing cardiac event through decrease of serum LDL-cholesterol [10]. However, recent studies show that statins have early beneficial effect for coronary heart disease before any significant reduction in lipid profile. This suggests that statins' benefit to reduce cardiac event may occur via alternative mechanism other than LDL-c reduction alone [11]. Improvement of EPCs proliferation and migration has been proposed as alternative mechanism of statins to reduce cardiac event. Simvastatin is able to enhance thioredoxin enzymatic activity, resulting in a significant reduction in intracellular reactive oxygen species [12]. Simvastatin and rosuvastatin have been proven to increase EPCs proliferation and migration through activation of the endothelial Nitric Oxide Synthase (eNOS) pathway, which can increase bioavailability of Nitric Oxide (NO) that can stimulate soluble kit ligand release that induce EPCs migration [13,14]. Atorvastatin also proven to increase the

amount of EPCs proliferation and migration through a mechanism that was independent of plasma levels of cytokines and cholesterol [15]. However, comparison between each statin toward EPCs migration is yet to be investigated. Herein, in this study, authors evaluated and compared the effect of simvastatin, atorvastatin and rosuvastatin treatment toward migrational capabilities of EPCs from CAD patients.

## MATERIALS AND METHODS

The study was a cohort study conducted from June 2018 to December 2018 in Dr. Soetomo General Hospital, Surabaya, Indonesia. Blood samples were obtained from sequential sampling of eight CAD patients from Department of Cardiology. The patients were male, aged 40-59 years, diagnosed with stable angina with >50% stenosis on Left Main Coronary Artery (LMCA) or >70% on other coronary artery. Patient with history of Percutaneous Coronary Intervention (PCI), Coronary Artery Bypass Grafting (CABG), new onset acute myocardial infarct, diabetes and anaemia were excluded.

This study had received ethical clearance from Local Ethic Committee from Dr. Soetomo General Hospital (0379/KEPK/VI/2018). All patients gave written informed consent prior to peripheral blood drawing. Details which disclose patient's identity of the donor patients were omitted.

## EPCs Isolation and Culture

Blood samples were collected from ante cubital vein using a sterile needle and syringe. To separate EPCs from Peripheral Blood Mononuclear Cells (PBMCs), authors used a standard protocol [16]. PBMCs were obtained by Ficoll Histopaque1077 (Sigma-Aldrich, USA). PBMCs at the concentration of  $5 \times 10^5$  cells/mL, supplemented with 15% FBS, 40 ng/mL of Vascular Endothelial Growth Factor (VEGF) in basal stemline II Haematopoietic Stem Cells (HSC) expansion medium (Sigma-Aldrich, USA), were seeded onto the fibronectin-coated six-well plate. Culture was

maintained at 37°C with 5% CO<sub>2</sub> with humidified atmosphere. Two days after, non-adherent cells were discarded and replaced by fresh medium. The medium was changed twice a week to ensure optimum culture condition. EPCs were confirmed using FITC-labeled Anti-human CD34 antibody (Biolegend, USA) through immunofluorescence examination.

### Endothelial Progenitor Cells (EPCs) Treatment

After 3 days, EPCs culture was divided into four group of treatment: 1) Negative control; 2) Simvastatin 0.5 µmol/L; 3) Atorvastatin 0.5 µmol/L; 4) Rosuvastatin 0.5 µmol/L. Cell culture was incubated for 48 hours and quadruplicate cell wells were used for each data point.

### Migration Assay

Boyden chamber assay method was used to calculate EPCs migration [17]. Isolated EPCs were detached using 1 mmol/L EDTA in PBS; and centrifuged 400x for 10 minutes at room temperature, then, a total of 5×10<sup>5</sup> EPCs were placed in modified Boyden chamber at the upper chamber. A 2 mL of basal media was added in the lower chamber compartment followed by 24 hour incubation at 37°C. Non-migratory cells were removed manually. New basal medium was placed on the receiver plate and added 500 µL of trypsin+EDTA solution 0.5% and incubated for 10 minutes. Verification was done by using a light microscope to observe if the cell that was released >90%. The cell on the receiver plate then inserted into a 15 mL conical tube, then harvested and counted using an automated cell counter with trypan blue colouring.

10

### STATISTICAL ANALYSIS

Statistical analyses were performed using SPSS Statistics 25.0 from IBM. Data were considered significantly difference if  $p < 0.05$ . Continuous variables, presented as mean±SD, were evaluated for normal distribution and compared using the ANOVA test, as appropriate. Correlation between parametric variables was obtained using pearson correlation followed by linear regression test.

## RESULTS

### Demography of the CAD Patients

Blood sample was obtained from eight CAD patients with demography as presented in [Table/Fig-1].

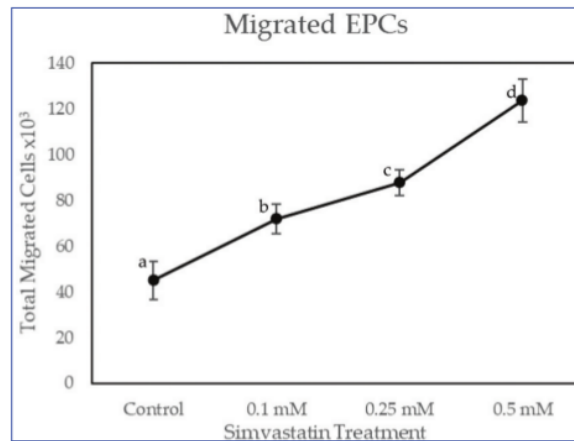
Variable	Mean±SD
Age (years)	54.50±4.31
Height (cm)	168.0±1.30
Weight (kg)	70.25±6.34
BMI (kg/m <sup>2</sup> )	25.39±2.13
Systolic blood pressure (mmHg)	137.50±24.35
Diastolic blood pressure (mmHg)	80±7.56
Heart rate (times/minute)	86±8.68
Total cholesterol (mg/dL)	200.50±74.75
Triglyceride (mg/dL)	97±11.64
LDL (mg/dL)	145±61.11
HDL (mg/dL)	35±7.64
Left ventricle ejection fraction (%)	53.5±4.11

[Table/Fig-1]: Characteristic of the CAD patients.

### Statins Increases EPCs Migration in Dose-dependent Manner

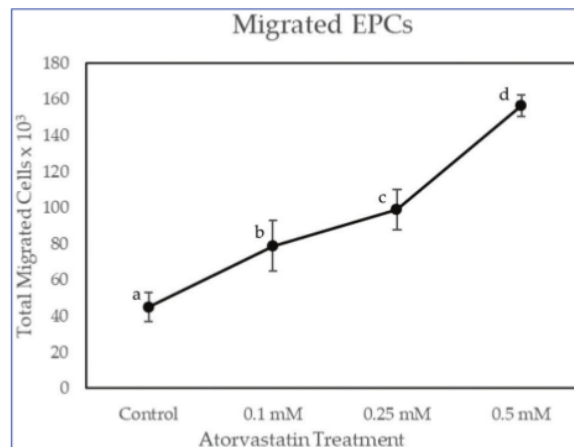
As shown in [Table/Fig-2], total migrated EPCs on simvastatin dose 0.1 mM, 0.25 mM and 0.5 mM have significant differences with the control group ( $p < 0.001$ ). The number of migrated cells in control group was 45,000.00±8,215.84. EPCs migrations were increased in dose-dependent manner, which were 72,000.00±6,363.96 for 0.1 mM simvastatin, 87,750.00±5,809.47 for 0.25 mM simvastatin

and 123,750.00±9367.49 for 0.5 mM simvastatin. Pearson's correlation showed significant and very strong correlation between simvastatin treatment with the number of migrated EPCs ( $r=0.964$ ;  $p < 0.001$ ). Linear regression test showed r-square of 0.929. This suggested that simvastatin treatment was responsible for 92.9% of EPCs migration.



[Table/Fig-2]: Total Migrated EPCs on Increasing Dose of Simvastatin Treatment. EPCs were exposed to increasing concentrations of simvastatin for 48 hours. Migrated EPCs was determined via Boyden Chamber Assay. Total migrated cells are expressed as mean±SE (n=4). Different annotation <sup>(a,b,c,d)</sup> denounce significant difference in ANOVA test ( $p < 0.05$ ).

As shown in [Table/Fig-3], total migrated EPCs on atorvastatin dose 0.1 mM, 0.25 mM and 0.5 mM have significant differences with the control group ( $p < 0.001$ ). EPCs migrations were increased in dose-dependent manner, which were 78,750.00±7,794.22 for 0.1 mM atorvastatin, 99,000.00±8,215.83 for 0.25 mM atorvastatin and 156,375.00±12,392.03 for 0.5 mM atorvastatin. Pearson's correlation showed significant and very strong correlation between simvastatin treatment with the number of migrated EPCs ( $r=0.869$ ;  $p < 0.001$ ). Linear regression test showed r square of 0.755. This suggested that atorvastatin treatment is responsible for 75.5% of EPCs migration.

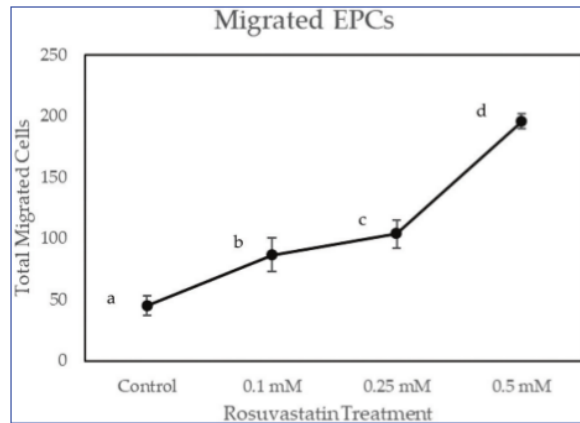


[Table/Fig-3]: Total Migrated EPCs on Increasing Dose of Atorvastatin Treatment. EPCs were exposed to increasing concentrations of atorvastatin for 48 hours. Migrated EPCs was determined via Boyden Chamber Assay. Total migrated cells are expressed as mean±SE (n=4). Different annotation <sup>(a,b,c,d)</sup> denounce significant difference in ANOVA test ( $p < 0.05$ ).

As shown in [Table/Fig-4], migrated EPCs on rosuvastatin dose 0.1 mM, 0.25 mM and 0.5 mM have had significant differences with the control group ( $p < 0.001$ ). EPCs migrations were increased in dose-dependent manner, which were 86,625.00±13,930.63 for 0.1 mM rosuvastatin, 103,500.00±11,250 for 0.25 mM rosuvastatin and 19,5750.00±5809.475 for 0.5 mM rosuvastatin. Pearson's correlation showed significant and very strong correlation between

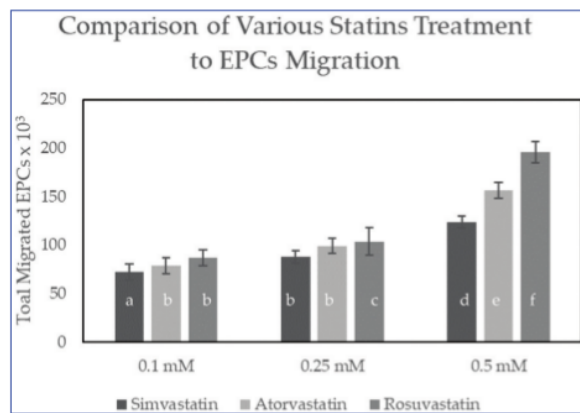


simvastatin treatment with the number of migrated EPCs ( $r=0.810$ ;  $p<0.001$ ). Linear regression test showed r-square of 0.656. This suggested that rosuvastatin treatment is responsible for 65.6% of EPCs migration.



**[Table/Fig-4]:** Total Migrated EPCs on Increasing Dose of Rosuvastatin Treatment. EPCs were exposed to increasing concentrations of rosuvastatin for 48 hours. Migrated EPCs was determined via Boyden Chamber Assay. Total migrated cells are expressed as mean±SE (n=4). Different annotation <sup>(a,b,c,d)</sup> denotes significant difference in ANOVA test ( $p<0.05$ ).

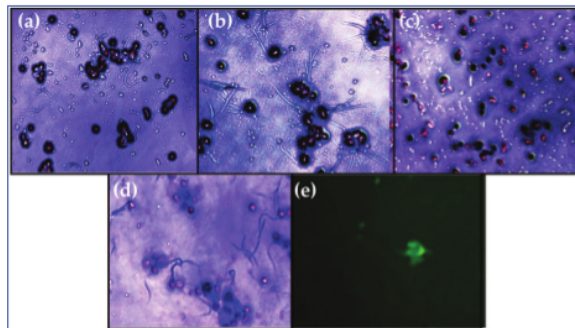
As shown in [Table/Fig-5], there were significant differences of migrated cells in rosuvastatin treatment compared to simvastatin and atorvastatin at the same dose ( $p<0.05$ ). At the highest dose (0.5 mM), rosuvastatin have significantly higher number of migrated EPCs ( $195,750.00\pm5,809.48$ ) compared to simvastatin ( $123,750.00\pm9,367.50$ ,  $p<0.001$ ) and atorvastatin ( $156,375.00\pm12,392.03$ ,  $p<0.001$ ). Microscopic view of the culture can be seen on [Table/Fig-6a-e], showing the EPCs cell that has been migrated from Boyden Chamber Assay and stained with trypan blue. These findings suggested that rosuvastatin is superior in increasing EPCs migration compared to simvastatin and atorvastatin at the highest dose (0.5 mM).



**[Table/Fig-5]:** Comparison between simvastatin, atorvastatin and rosuvastatin at 0.1 mM, 0.25 mM and 0.5 mM dose on Total Migrated EPCs. Total migrated cells are expressed as mean±SE (n=4). Different annotation <sup>(a,b,c,d,e,f)</sup> denotes significant difference in ANOVA test ( $p<0.05$ ).

## DISCUSSION

Impaired EPCs function can be improved with statin treatments. In this research, treatment with simvastatin, atorvastatin, and rosuvastatin were able to increase EPCs migration in dose-dependent manner. This finding was consistent with the previous finding which showed that simvastatin treatment on impaired EPCs culture from diabetic rats improved its migration capabilities in a dose-dependent manner at dose 0.01, 0.1, 1 mmol/L [18]. For other statins, usage of various doses on EPCs treatment was rarely used [19]. However, treatment with atorvastatin and rosuvastatin



**[Table/Fig-6]:** Light-inverted microscope view of migrated EPCs stained with trypan blue after 48 hours of treatment with: (a) Simvastatin dose 0.5 mM; (b) Atorvastatin dose 0.5 mM; (c) Rosuvastatin dose 0.5 mM; (d) Control; (e) EPCs confirmation using FITC-labeled anti-human CD34 observation with immunofluorescence microscope.

at dose 2.5  $\mu$ M, 5  $\mu$ M and 10  $\mu$ M on EPCs culture in presence of SDF-1 have been shown to have dose-dependent manner effect on the vascular tube forming capacity in vitro [20], while vascular tube forming capacity is correlated with EPCs migration capability [21]. Hence, this suggests an indirect proof of dose-dependent effect of atorvastatin and rosuvastatin on EPCs migration capability.

While this research showed dose-dependent effect of simvastatin, atorvastatin and rosuvastatin on EPCs migration in-vitro, in-vivo or clinical trial might show a different result. Atorvastatin treatment on CHD patients showed increased migrated EPCs in the circulation, but no difference of migrated EPCs on treatment dose 10 mg and 40 mg [22]. The previous meta-analysis also suggested that statins increased EPCs migration in clinical trials. However, only a few studies compared statins at the different dose, making it unclear whether a dose-dependent relationship exists [19].

In this research, the highest regression percentage was shown on simvastatin treatment (92.9%) compared to atorvastatin (75.5%) and rosuvastatin (65.6%). Suggesting that simvastatin will have the lowest unexplained variation of EPCs migration as the outcome (7.1%) assuming all other variables are controlled. While the mechanism underlying the different effect of various type of statins on EPC migration still needs to be determined. Previous research showed that simvastatin treatment has a high regression percentage with the NOX2 (NADPH Oxidase 2) reduction (76%) [20]. Similarly, atorvastatin and rosuvastatin also proved to have NOX2 inhibition effect [21]. NOX2 level was proven to have a negative correlation with EPCs migration and adhesion [22], suggesting that antioxidant pathway which involves NOX2 might dominant pathway that explain the effect of simvastatin, atorvastatin and rosuvastatin treatment on EPCs migration. NOX2 inhibition on statin treatment has been proven to be correlated with increased NO availability [23]. While, NO is essential for EPCs proliferation and migration [24,25].

In terms of efficiency, the highest migration was observed on rosuvastatin ( $195,750.00\pm5,809.48$ ) compared to simvastatin ( $123,750.00\pm9,367.497$ ,  $p<0.001$ ) and atorvastatin ( $156,375.00\pm12,392.03$ ) at the highest dose (0.5 mM). While authors suggest the antioxidant pathway might play a dominant role in the EPCs migration effect for the statin treatment, the present authors also observed similar efficiency comparison between statins on its antioxidant effect. Atorvastatin treatment has a significantly higher reduction of oxidative stress compared to simvastatin on patients with coronary heart disease [26]. Rosuvastatin treatment also has a significantly higher reduction in Rho/Rho kinase (ROCK) activity which is activated from oxidative stress compared to atorvastatin [27]. However, at the low dose (0.1 mM) no significant difference on EPCs migration between atorvastatin and rosuvastatin.

## LIMITATION

The present evidence suggested that simvastatin, atorvastatin, and rosuvastatin have a beneficial effect in EPCs migration, there

is a lack of consensus for EPCs definition (Hibbert). Although, this research confirms EPCs through CD34 immunofluorescence, which is the most commonly-used surface marker to identify EPCs [19]; other studies suggested using CD34+/KDR+ with either CD45, CD45dim through flow cytometry to accurately confirm EPCs count [19]. This suggests possibilities of other cells other than EPCs also being counted.

## CONCLUSION

Simvastatin, atorvastatin and rosuvastatin treatment improve EPCs migration from CAD patients in dose-dependent manner. High dose rosuvastatin is superior compared to atorvastatin and simvastatin to increase the EPCs migration.

## REFERENCES

- Rosamond W, Flegal K, Furie K, Go A, Greenlund K, Haase N, et al. Heart disease and stroke statistics-2008 update: a report from the American Heart Association Statistics Committee and Stroke Statistics Subcommittee. *Circulation*. 2008;117:e25.
- Nichols M, Townsend N, Scarborough P, Rayner M. Cardiovascular disease in Europe 2014: epidemiological update. *Eur Heart J*. 2014;35:2950.
- American Heart Association. Heart Disease and Stroke Statistics-2018 Update: A Report from the American Heart Association. *Circulation*. 2018;137:e67.
- Ministry of Health Indonesia. 2015. Indonesia: Sample Registration System 2014. NIHHD Library Cataloguing in Publication Data. Available at <https://www.litbang.kemkes.go.id/wp-content/uploads/2017/10/final-report-SRS-2014.pdf>. Accessed at 20 March 2019
- Oktaviono YH, Sargowo D, Widodo MA, Dirgantara Y, Chouw A, Sandra F. Proliferation of Peripheral Blood-derived Endothelial Progenitor Cells from Stable Angina Subjects. *Indones Biomed J*. 2014;6:91-96.
- Vasa M, Ficht L, Scherer S, Aicher A, Adler K, Urbich C, et al. Number and migratory activity of circulating endothelial progenitor cells inversely correlate with risk factors for coronary artery disease. *Circ Res*. 2001;89:E1-E7.
- Werner N, Wassmann S, Ahlers P, Schiegl T, Kosiol S, Link A, et al. Endothelial progenitor cells correlate with endothelial function in patients with coronary artery disease. *Basic Res Cardiol*. 2007;102(6):565-71.
- Loomans CJ, De Koning EJ, Staal FJ, Rabelink TJ, Zonneveld AJ. Endothelial progenitor cell dysfunction in type 1 diabetes: another consequence of oxidative stress?. *Antioxid Redox Signal*. 2005;7(11-12):1468-75.
- Rehman J, Li J, Orschell CM, March KL. Peripheral blood endothelial progenitor cells are derived from monocyte/macrophages and secrete angiogenic growth factors. *Circulation*. 2003;107:1164-69.
- Shepherd J, Cobbe SM, Ford I, Isles CG, Lorimer AR, MacFarlane PW, et al. Prevention of coronary heart disease with pravastatin in men with hypercholesterolemia. West of Scotland Coronary Prevention Study Group. *N Engl J Med*. 1995;333:1301-07.
- Baigent C, Keech A, Kearney PM, Blackwell L, Buck G, Pollicino C, et al. Efficacy and safety of cholesterol-lowering treatment: prospective meta-analysis of data from 90,056 participants in 14 randomised trials of statins. *Lancet*. 2005;366:1267-78.
- Haendeler J, Hoffmann J, Zeiher AM, Dimmeler S. Antioxidant effects of statins via S-nitrosylation and activation of thioredoxin in endothelial cells: a novel vasculoprotective function of statins. *Circulation*. 2004;110(7):856-61. Epub 2004 Aug 2.
- Spiel AO, Mayr FB, Leitner JM, Firbas C, Sieghart W, Jilma B. Simvastatin and rosuvastatin mobilize endothelial progenitor cells but do not prevent their acute decrease during systemic inflammation. *Thrombosis Research*. 2008;123:108-13.
- Ozüyan B, Ebner P, Niesler U, Ziemann J, Kleinbongard P, Jax T, et al. Nitric oxide differentially regulates proliferation and mobilization of endothelial progenitor cells but not of hematopoietic stem cells. *Thromb Haemost*. 2005;94(4):770-72.
- Spadaccio C, Pollari F, Casacalenda A, Alfano G, Genovese J, Covino E, et al. Atorvastatin increases the number of endothelial progenitor cells after cardiac surgery: a randomized control study. *J Cardiovasc Pharmacol*. 2010;55(1):30-38. doi: 10.1097/FJC.0b013e3181c37d4d.
- Sandra F, Oktaviono YH, Widodo MA, Dirgantara Y, Chouw A, Sargowo D. Endothelial Progenitor Cells Proliferated via MEK-dependent p42 MAPK Signaling Pathway. *Mol Cell Biochem*. 2015;400:201-06.
- Sandhu K, Mamas M, Butler R. Endothelial progenitor cells: Exploring the pleiotropic effects of statins. *World J Cardiol*. 2017;9(1):1-13.
- Zhang W, Han Q, Chen S, Yan H. Effect of simvastatin on the amount and function of endothelial progenitor cells from bone marrow in diabetic rats. *Zhonghua Yan Ke Za Zhi*. 2012;48(11):1015-20.
- Benjamin H, Trevor S, Ramirez F, Pourdjabbar A, Raizman J, Maze R, et al. The effect of statins on circulating endothelial progenitor cells in humans: a systematic review. *Journal of Cardiovascular Pharmacology*. 2013;62(5):491-96.
- Chiang KH, Cheng WL, Shih CM, Lin YW, Tsao NW, Kao YT, et al. Statins, HMG-CoA reductase inhibitors, improve neovascularization by increasing the expression density of CXCR4 in endothelial progenitor cells. *PLoS One*. 2015;10(8):e0136405.
- Violi F, Carnevale R, Pastori D, Pignatelli P. Antioxidant and antiplatelet effects of atorvastatin by NOX2 inhibition. *Trends Cardiovasc Med*. 2014;24(4):142-48.
- Li TB, Zhang YZ, Liu WQ, Peng J, Luo XJ, Ma QL. Correlation between NADPH oxidase-mediated oxidative stress and dysfunction of endothelial progenitor cell in hyperlipidemic patients. *Korean J Intern Med*. 2017;33(2):313-22.
- Pignatelli P, Carnevale R, Di Santo S, Bartimoccia S, Nocella C, Vicario T, et al. Rosuvastatin reduces platelet recruitment by inhibiting NADPH oxidase activation. *Biochemical Pharmacology*. 2012a;84:1635-42.
- Bauer SM, Goldstein LJ, Bauer RJ, Chen H, Putt M, Velazquez OC. The bone marrow-derived endothelial progenitor cell response is impaired in delayed wound healing from ischemia. *J Vasc Surg*. 2006;43:134-41.
- Lievadot J, Murasawa S, Kureishi Y, Uchida S, Masuda H, Kawamoto A, et al. HMG-CoA reductase inhibitor mobilizes bone marrow-derived endothelial progenitor cells. *Journal Clin Invest*. 2001;108:399-405.
- Li J, Sun YM, Wang LF, Li ZQ, Pan W, Cao HY. Comparison of effects of simvastatin versus atorvastatin on oxidative stress in patients with coronary heart disease. *Clin Cardiol*. 2020;33(4) 222-27.
- Rawlings R, Nohria A, Liu PY, Donnelly J, Creager MA, Ganz P, et al. Comparison of effects of rosuvastatin (10 mg) versus atorvastatin (40 mg) on rho kinase activity in caucasian men with a previous atherosclerotic event. *Am J Cardiol*. 2008;103(4):437-41.

### PARTICULARS OF CONTRIBUTORS:

- Department of Cardiology and Vascular Medicine, Faculty of Medicine, University of Airlangga, Surabaya, East Java, Indonesia.
- Department of Cardiology and Vascular Medicine, Faculty of Medicine, University of Airlangga, Surabaya, East Java, Indonesia.
- Department of Cardiology and Vascular Medicine, Faculty of Medicine, University of Airlangga, Surabaya, East Java, Indonesia.
- Department of Cardiology and Vascular Medicine, Faculty of Medicine, University of Airlangga, Surabaya, East Java, Indonesia.
- Department of Cardiology and Vascular Medicine, Faculty of Medicine, University of Airlangga, Surabaya, East Java, Indonesia.

### NAME, ADDRESS, E-MAIL ID OF THE CORRESPONDING AUTHOR:

Yudi Her Oktaviono,  
Jl. Mayjend. Prof. Dr. Moestopo No.6-8, Surabaya, East Java, Indonesia.  
E-mail: yoktaviono@gmail.com

FINANCIAL OR OTHER COMPETING INTERESTS: None.

Date of Submission: **Mar 11, 2019**  
Date of Peer Review: **Mar 20, 2019**  
Date of Acceptance: **Apr 01, 2019**  
Date of Publishing: **May 01, 2019**

# Resuvastatin is Superior Compared to Simvastatin and Atorvastatin to Induce Endothelial Progenitor Cells Migration

## ORIGINALITY REPORT

17%

SIMILARITY INDEX

8%

INTERNET SOURCES

13%

PUBLICATIONS

0%

STUDENT PAPERS

## PRIMARY SOURCES

- 1 Tyagita Rani Savitri, Yudi Her Oktaviono, Djoko Soemantri. "EFFECT OF STATINS ON ENDOTHELIAL PROGENITOR CELL (EPC) MIGRATION FROM PERIPHERAL BLOOD OF STABLE CORONARY ARTERY DISEASE PATIENT", Indonesian Journal of Cardiology, 2019  
Publication 2%
- 2 [www.scribd.com](http://www.scribd.com)  
Internet Source 2%
- 3 [www.jbc.org](http://www.jbc.org)  
Internet Source 1%
- 4 T. Umemura, J. Soga, T. Hidaka, H. Takemoto et al. "Aging and Hypertension Are Independent Risk Factors for Reduced Number of Circulating Endothelial Progenitor Cells", American Journal of Hypertension, 2008  
Publication 1%
- 5 A Y Putri, B S Pikir, Y H Oktaviono, F Alzahra'.

"Effects of Garlic Extract (allicin) on Proliferation of Endothelial Progenitor Cells (EPC) in Patients with Stable Coronary Artery Disease", IOP Conference Series: Earth and Environmental Science, 2020

Publication

1%

6

Cheng-Hsien Lu, Hsin-Ching Lin, Chih-Cheng Huang, Wei-Che Lin et al. "Increased circulating endothelial progenitor cells and anti-oxidant capacity in obstructive sleep apnea after surgical treatment", Clinica Chimica Acta, 2015

Publication

1%

7

Coronary Graft Failure, 2016.

Publication

1%

8

[atvb.ahajournals.org](http://atvb.ahajournals.org)

Internet Source

1%

9

[article.sapub.org](http://article.sapub.org)

Internet Source

1%

10

[www.researchsquare.com](http://www.researchsquare.com)

Internet Source

<1%

11

[repository.unair.ac.id](http://repository.unair.ac.id)

Internet Source

<1%

12

Birgit Assmus, Jörg Honold, Volker Schächinger, Martina B. Britten et al.

"Transcoronary Transplantation of Progenitor Cells after Myocardial Infarction", New England

<1%

- 
- |    |   |     |
|----|---|-----|
| 13 | <a href="http://www.ncbi.nlm.nih.gov">www.ncbi.nlm.nih.gov</a><br>Internet Source   | <1% |
| 14 | <a href="http://www.impactjournals.com">www.impactjournals.com</a><br>Internet Source   | <1% |
| 15 | <a href="http://circ.ahajournals.org">circ.ahajournals.org</a><br>Internet Source   | <1% |
| 16 | <a href="http://abbs.oxfordjournals.org">abbs.oxfordjournals.org</a><br>Internet Source   | <1% |
| 17 | <a href="http://www.webcardio.com">www.webcardio.com</a><br>Internet Source   | <1% |
| 18 | <a href="http://e-sciencecentral.org">e-sciencecentral.org</a><br>Internet Source   | <1% |
| 19 | Hibbert, Benjamin, Trevor Simard, F. Daniel Ramirez, Ali Pourdjabbar, Joshua Raizman, Ronnen Maze, Kumanan R Wilson, Steven Hawken, and Edward R O'Brien. "The Effect of Statins on Circulating Endothelial Progenitor Cells in Humans : a Systematic Review", <i>Journal of Cardiovascular Pharmacology</i> , 2013.<br>Publication | <1% |
| 20 | E-Li Wang, Miao-Miao Jia, Fang-Mei Luo, Tao Li, Jing-Jie Peng, Xiu-Ju Luo, Feng-Lin Song, Jin-Fu Yang, Jun Peng, Bin Liu. "Coordination   | <1% |



between NADPH oxidase and vascular peroxidase 1 promotes dysfunctions of endothelial progenitor cells in hypoxia-induced pulmonary hypertensive rats", European Journal of Pharmacology, 2019

Publication

21

Multidiscipline Modeling in Materials and Structures, Volume 6, Issue 3 (2013-05-27)

Publication

<1%

22

[journals.sagepub.com](http://journals.sagepub.com)

Internet Source

<1%

23

Kap-Hyoun Ko. "Ex Vivo Expansion of Haematopoietic Stem Cells to Improve Engraftment in Stem Cell Transplantation", Methods in Molecular Biology, 2011

Publication

<1%

24

"Comprehensive Cardiovascular Medicine in the Primary Care Setting", Springer Science and Business Media LLC, 2019

Publication

<1%

25

Cristiano Spadaccio. "Atorvastatin Increases the Number of Endothelial Progenitor Cells After Cardiac Surgery: A Randomized Control Study :", Journal of Cardiovascular Pharmacology, 01/2010

Publication

<1%

26

Internet Source

<1%

27

Kully Sandhu, Mamas Mamas, Robert Butler. "Endothelial progenitor cells: Exploring the pleiotropic effects of statins", World Journal of Cardiology, 2017

Publication

<1%

28

Adams, Stephen P, Michael Tsang, James M Wright, and Stephen P Adams. "Lipid lowering efficacy of atorvastatin", Cochrane Database of Systematic Reviews Reviews, 2012.

Publication

<1%

29

"Original Research", European Heart Journal Supplements, 2016

Publication

<1%

Exclude quotes On

Exclude matches Off

Exclude bibliography On

# Resuvastatin is Superior Compared to Simvastatin and Atorvastatin to Induce Endothelial Progenitor Cells Migration

---

GRADEMARK REPORT

---

FINAL GRADE

**/0**

GENERAL COMMENTS

**Instructor**

---

PAGE 1

---

PAGE 2

---

PAGE 3

---

PAGE 4

---