

# Gingival Mesenchymal Stem Cells from Wistar

*by* Pudji Lestari

---

**Submission date:** 24-Sep-2019 11:41AM (UTC+0800)

**Submission ID:** 1178821997

**File name:** WebPage-2.pdf (462.61K)

**Word count:** 3432

**Character count:** 19613

5

See discussions, stats, and author profiles for this publication at: <https://www.researchgate.net/publication/327915447>

## Gingival Mesenchymal Stem Cells from Wistar Rat's Gingiva (*Rattus Novergicus*) – Isolation and Characterization (In Vitro Study)

Article in *Journal of International Dental and Medical Research* · September 2018

CITATIONS

4

READS

231

13 authors, including:



Alexander Nugraha  
Airlangga University

19 PUBLICATIONS 21 CITATIONS

[SEE PROFILE](#)



Diah Savitri E  
Airlangga University

52 PUBLICATIONS 32 CITATIONS

[SEE PROFILE](#)



Pudji Lestari  
Airlangga University

6 PUBLICATIONS 7 CITATIONS

[SEE PROFILE](#)



Eryk Hendrianto  
Airlangga University

30 PUBLICATIONS 142 CITATIONS

[SEE PROFILE](#)

Some of the authors of this publication are also working on these related projects:



Immunocontraception [View project](#)



Stem Cell in Orthodontics [View project](#)

## Gingival Mesenchymal Stem Cells from Wistar Rat's Gingiva (*Rattus Novergicus*) – Isolation and Characterization (*In Vitro* Study)

Alexander Patera Nugraha<sup>1,2</sup>, Ida Bagus Narmada<sup>2</sup>, Diah Savitri Ernawati<sup>3</sup>, Agung Dwi Wahyu Widodo<sup>4</sup>, Pudji Lestari<sup>5</sup>, Aristika Dinaryanti<sup>6</sup>, Eryk Hendrianto<sup>6</sup>, Igo Syaiful Ihsan<sup>6</sup>, Helen Susilowati<sup>6</sup>, Nora Ertanti<sup>6</sup>, Deya Karsari<sup>6</sup>, Fedik Abdul Rantam<sup>6,7\*</sup>

1. Doctoral Student of Medical Science, Faculty of Medicine, Universitas Airlangga, Surabaya, Indonesia.
2. Orthodontics Department, Faculty of Dental Medicine, Universitas Airlangga, Surabaya, Indonesia.
3. Oral Medicine Department, Faculty of Dental Medicine, Universitas Airlangga, Surabaya – Indonesia.
4. Clinical Microbiology Department, Faculty of Medicine, Universitas Airlangga, Surabaya, Indonesia
5. Public Health Department, Faculty of Medicine, Universitas Airlangga, Surabaya, Indonesia
6. Stem Cell Research and Development Center, Universitas Airlangga, Surabaya – Indonesia.
7. Virology and Immunology Laboratory, Microbiology Department, Faculty of Veterinary Medicine, Universitas Airlangga.

### Abstract

Gingiva is emerging as a source of Mesenchymal Stem Cells. Gingival Mesenchymal Stem Cell has been isolated and characterized from the gingival connective tissue of wistar rat (*Rattus Novergicus*). Gingival Mesenchymal Stem Cell sources are rich, attainable and easy to isolate through minimal invasive procedure. Gingival Mesenchymal Stem Cells are ideal to accelerate bone regeneration. The aim of this study was to analyze Gingival Mesenchymal Stem Cells from Wistar Rats' gingiva (*Rattus Novergicus*) isolation and characterization by CD34, CD44, CD73, CD90, CD105 expression.

This study was descriptive observational with simple random sampling method. Gingival Mesenchymal Stem Cells were isolated from healthy, 200 gram, 1 month year old, male rat's (*Rattus Novergicus*) lower gingival tissue through gingivectomy procedure (n=4). Gingiva were minced into small fragments then cultured in 2 weeks. The culture was passaged every 3-5 days after cultured and plated. The isolated Gingival Mesenchymal Stem Cells in passage 5 were characterized by CD34, CD44, CD73, CD90, CD105 using Immunocytochemistry and flowcytometry examination.

Gingival Mesenchymal Stem Cells strongly expressed CD44+, CD73+, CD90+, CD105+ but did not express CD45- and CD34-. Gingival Mesenchymal Stem Cells' morphology was fibroblast-like, spindle-shaped, colony-forming abilities, and stick to the culture plate.

Gingiva is potential Stem Cell source. Gingival Mesenchymal Stem Cells has multipotency ability with proliferation and mesenchymal stem cells characteristic advantageous for tissue engineering and regenerative therapy.

Clinical article (J Int Dent Med Res 2018; 11(2): pp. 694-699)

**Keywords:** Gingival Mesenchymal Stem Cells, Immunophenotyping, Isolation and Characterization, Cluster of Differentiation, Periodontal Tissue.

**Received date:** 23 February 2018

**Accept date:** 04 April 2018

### Introduction

The regenerative medicine and tissue engineering using mesenchymal stem cell have emerged in medicine nowadays.<sup>1</sup> Recently, many clinician have been interested to overcome the

limitation in existing medical practice procedure by using mesenchymal stem cell.<sup>2</sup> Cells, biomaterials and biochemical factors were three fundamental factor of Tissue engineering. Mesenchymal Stem Cells (MSCs) have considerable regeneration ability that capable in tissue engineering.<sup>3</sup> The MSCs are multipotent stromal cells which have osteogenic, chondrogenic, and adipogenic ability.<sup>4</sup> MSC regarded as readily available regenerative cells that able mobilizing to the certain signal of various cell response in the body.<sup>5</sup> The MSCs have high proliferative growth capacity. The MSCs hold abundant favorable therapy for tissue

#### \*Corresponding author:

Prof. Dr. Fedik Abdul Rantam, DVM.  
Stem Cell and Tissue Engineering Development Centre,  
Universitas Airlangga. Jl. Mulyorejo,  
Surabaya, Indonesia.  
E-mail: fedik-a-r@fkh.unair.ac.id

engineering and regenerative medicine therapy clinically.<sup>6</sup>

Recently, the source for harvesting stem cells (SCs), progenitor/regenerative cells has gained lots of attention. MSCs have been isolated from various tissues such as bone marrow tissue, joint and muscle, adipose tissue, and blood.<sup>4</sup> The researchers have been explored the oral cavity to reserve cells with the prospective ability to various differentiated tissues.<sup>1</sup> Gingival Mesenchymal Stem/Progenitor Cells (GMSCs) was isolated from gingival connective tissue.<sup>7</sup>

Periodontium was the tooth supporting and investing tissue, comprising gingiva, alveolar bone, periodontal ligament, and cementum. The periodontal tissue develops functions as one unit.<sup>8</sup> The gingiva was a part of periodontal tissue. The gingiva characterized by it's the magnificent vigorous wound healing properties with a fast regeneration and reconstitution of tissue architecture following injury or excision without cicatrix.<sup>9</sup> Gingiva is easily accessible and is often resected during standard surgical procedures such as dental crown lengthening, gingivectomy and multiple periodontal surgeries with minimal patient discomfort.<sup>10</sup> Nowadays, the GMSCs with potential immunoregulator, modulate immunity and regenerative ability have been isolated and characterized from the gingival connective tissue. These cells, in contrast to other MSC sources, are abundant, easily obtainable and readily accessible through minimally invasive cell isolation techniques. Harvested gingival tissue is de-epithelized, and the lamina propria is separated and collected. The lamina propria of gingiva tissue is minced and used to isolate the MSCs.<sup>8</sup>

The isolation and characterization of MSCs can be done by condition. The MSCs has an adhere ability to the plate in standard culture conditions. MSCs have specific cell marker such as Homing Cell Adhesion Molecule (CD44), Extracellular Enzyme - Ecto-5'-Nucleotidase (CD73), Thy-1 (CD90) and Endoglin (CD105). However, the MSCs do not express Hematopoietic Stem Cells (HSCs) surface cell marker such as PTPRC (CD45).<sup>4,11</sup> The aim of this study was to analyze GMSCs from Wistar rats (*Rattus Novergicus*) isolation and characterization by CD34, CD44, CD73, CD90, CD105 expression.

## Materials and methods

This study received an ethical clearance approval letter for animal subjects from the Faculty of Dental Medicine, Universitas Airlangga Surabaya, East Java, Indonesia Ethics Research Committee with number 289/HRECC.FODM/XII/2017. The research was conducted at an experimental laboratory within the Stem Cell Research and Development Centre, Universitas Airlangga, Surabaya, East Java, Indonesia.

The research was observational descriptive study incorporated the use of an animal model consisting of 4 samples determined using Lameshow's formula and selected randomly. The exploration of GMSCs involved the use of lower anterior gingiva from 1month year old Wistar male rats 200 gram. The immunofluorescence immunocytochemistry and flowcytometry was at passage 5 to examine and measured CD34, CD44, CD45, CD73, CD90, CD105 expression.

### Gingival Mesenchymal Stem Cells – Isolation and Culture Procedure

GMSCs isolation and culture method was done based on research by Rantam et al.<sup>12</sup> Subsequently, all culture procedures should be conducted in a closed tissue culture using aseptic techniques. All samples were anesthetized using rodent's anesthesia before gingivectomy. Gingivectomy procedure was performed to produces sufficient gingival tissue to be cultured. Gingival tissue was attached to a 15ml Heparin tube (Sigma Aldrich®, USA) previously filled with 3 ml  $\alpha$ -MEM. Each gingival tissue was transferred to a 15ml sterile tube with a blue cap and diluted with 1 x Phosphate Buffer Saline (PBS) (Sigma Aldrich®, USA) sterile to a total volume of 8 ml. Each tube was then rinsed twice with 5ml x PBS and the contents were combined with aspirate solution. In every case, the gingival tissue was placed in a Ficoll (Sigma Aldrich®, USA) temperature chamber in a separate 15 ml tube. Furthermore, each aspirate was coated with Ficoll before being centrifuged (Sorvall™ MX Series Floor Model Micro-Ultracentrifuge, Thermo Fisher, USA) at 1600 rpm for 15 minutes at room temperature. After centrifugation, collection was effected at the "buffy coat" location on the surface of Ficoll-PBS by means of a sterile Pasteur pipette and placed in a 15ml tube (Sigma Aldrich®, USA).

Each sample was diluted with 1x PBS to a total volume of 15ml, with the tube being turned 3-5 times as a means of achieving an even mix. At the next stage, centrifugation was undertaken for 10 minutes at a speed of 1600 rpm before the supernatant and cells suspended in 6ml of CCM were removed before heating. Having placed between 5cm<sup>2</sup> and 10cm<sup>2</sup> of cells on the plate, they were incubated at 37°C at 5% CO<sup>2</sup> moisture and allowed to attach to the cell for 18-24 hours. Approximately 24 hours later, the media and cells not attached were disposed of. 5ml 1x PBS was then added before being heated in the culture, shaken well and used to cover the surface area. It was then disposed of with 1x PBS prior to the washing process being repeated twice. Ten minutes later, 10ml of fresh CCM was added to the dish before it was returned to the incubator. The cells were incubated at 37°C and 5-10% CO<sup>2</sup> moisture with the culture being observed daily by means of an inverted microscope. The media was removed and the cells rinsed with 5ml or 10ml of 1x PBS prior to heating every three days. The PBS was subsequently discarded and the dish filled with 10ml of fresh CCM. This process was continued until the concentration of confluent cells reached between 60% and 80%. If the cell developed in the cell plant, the latter had to be balanced in the incubator at 5% CO<sup>2</sup> moisture and 37°C for 48 hours before use.

#### Characterization GMSCs by immunofluorescence

GMSCs characterization using immunofluorescence was conducted based on research by Jin et al.<sup>4</sup> On examination, immunocytochemical cells that have been monolayer made single cell trypsin process. Trypsin was added and centrifuged at 1600 rpm for 5 minutes. The pellets were added to 1ml of  $\alpha$ MEM growth medium (Sigma Aldrich®, USA). GMSCs were cultured in a chamber slide (BD Biosciences, USA) suspended and grown on a special glass of 20 $\mu$ l. The object glass was placed in a box containing wet paper and then incubated at 37°C for one hour before the 4% paraformaldehyde (Sigma-Aldrich Co.) was used to fix the cells, then permeabilized in PBS and 1% TritonX100 for 3 min. GMSCs were stained with anti-CD34, anti-CD44, anti-CD45, anti-CD73, anti-CD90, anti CD105 monoclonal antibodies (Sigma Aldrich®, USA) were added to each sample and then incubated at 37°C for 45

minutes. The PBS washing and drying process was repeated. At the next immunofluorescence examination on glass object with 50% glycerin dropped above the glass object and viewed the results with a fluorescent microscope with 100x magnification (Automated Fluorescence Microscope, BX63, Olympus®, USA). When fluorescent the results are positive. If not fluorescent the results are negative.

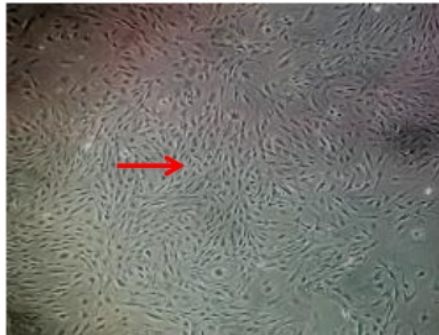
#### Characterization GMSCs by Flowcytometry

The GMSC characterization using flowcytometry was done based on research by Du et al.<sup>11</sup> Surface markers for bulk-cultured GMSCs were quantified using flowcytometry. Trypsin/EDTA 0.05% resuspended in Hanks' Balanced Salt Solution (Sigma-Aldrich) supplemented with 5% FCS blocking buffer was used to detached cell after confluence. The immunophenotype was determined by flowcytometry 10<sup>6</sup> gingival cells (passage 5) were incubated with specific monoclonal antibodies (10 mg/mL), conjugated with Fluorescein Isothiocyanate (FITC), Phycoerythrin (PE) in 250ml PBS. The antibody anti-CD44, anti-CD45, anti-CD73, anti-CD90, anti CD105 primary monoclonal antibodies (Sigma Aldrich®, USA) was used. Cells then diluted in 4 ml PBS centrifugated and resuspended with 600ml phosphate buffered saline-formaldehyde 2% 1 hour on ice at dark room. The Isotype controls used were immunoglobulin G (IgG1) FITC and IgG1 PE monoclonal antibodies 45 minutes on ice in the dark room. Cells were fixed in fluorescence-activated cell sorting solution after washing. The analysis was performed with a flowcytometry (Epics-XL/MCL, Beckman Coulter, Fullerton, CA, USA).

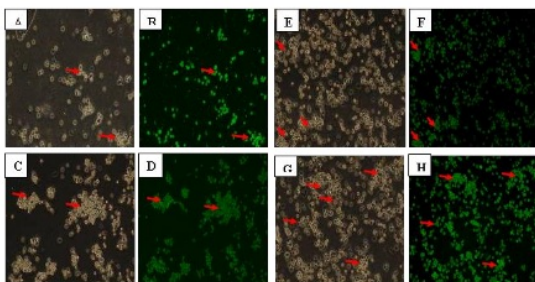
#### Results

GMSCs from Wistar Rat's gingiva were isolated by adherence splitting and reaching 95% confluence. GMSCs initial cultures showed small rounded cells, spindle-shaped cells under inverted microscope. The cells homogeneously showed a fibroblast-like, spindle shape from the first until fifth passage (Figure 1). The GMSCs was expressed higher positive MSCs markers (Figure 2) than contrary HSCs (Figure 3). The CD105 expression has the highest mean among another positive MSC marker examined using

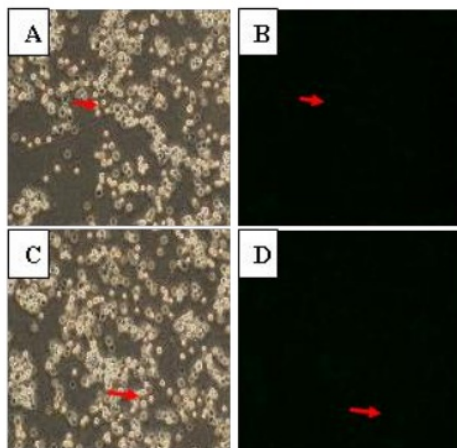
immunocytochemistry (Figure 4) and flowcytometry (Figure 5).



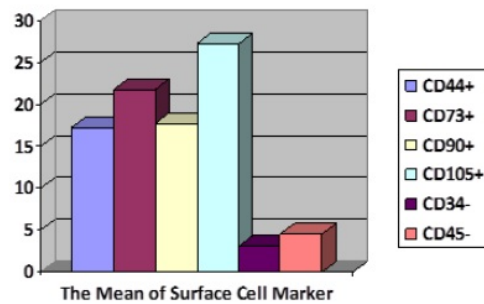
**Figure 1.** The morphology of Gingival Mesenchymal Stem Cells showed fibroblast-like morphology, colony-forming abilities, spindle-shaped, and adherence to plate.



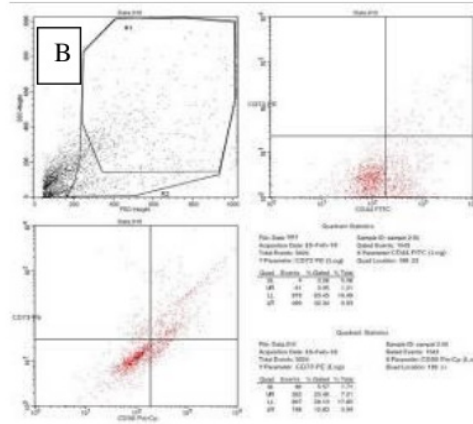
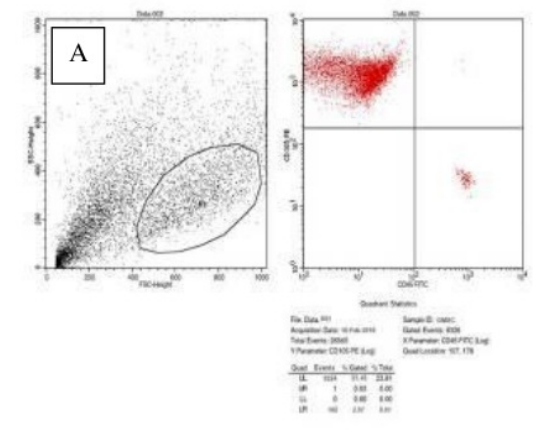
**Figure 2.** GMSCs expressed positive (+) MSC surface cell markers (Red Arrow). A, B. CD44; C, D. CD73; E, F. CD90; G, H. CD105.



**Figure 3.** GMSCs expressed negative (-) HSC surface cell markers (Red Arrow). A, B.



**Figure 4.** The mean of GMSCs expressed positive (+) MSC surface cell markers CD44, CD73, CD90, CD105 and negative (-) HSC surface cell markers CD34 and CD45.



**Figure 5.** Flowcytometry result of GMSCs Characterization. A. GMSCs highly expressed CD105 but did not CD45; B. GMSCs expressed positive CD44, CD73, and CD90.

## Discussion

MSCs can be isolated from adipose tissue and bone marrow but for a small harvest of this stem cell causes morbidity and pain.<sup>13,14</sup> Invasive procedures such as liposuction and surgery may be required to obtain bone marrow stem cells or fatty tissues stem cell. Thus, Umbilical Cord Mesenchymal Stem Cells origin can be only obtained at a certain stage.<sup>4</sup> Harvesting stem cells from oral cavity tissues easier than other tissue. The Oral cavity tissue could be a stem cell source with minimal invasive and it is painless only with local anesthesia procedure.<sup>11,15</sup> However, Dental pulp stem cells and periodontal ligament stem cells are easily accessible but number of teeth is limited.<sup>7,16</sup> In contrast, GMSCs can be isolated from minimally invasive procedures at any time in life. Nevertheless, GMSCs can be a future alternative cell for tissue engineering.<sup>4</sup>

Gingival tissue exhibits magnificent healing processes suggesting that GMSCs has a unique properties.<sup>11</sup> The firstly isolated a gingival tissue progenitor cell within gingival tissues named GMSCs.<sup>17</sup> Recent studies have also shown that GMSCs with the proper manipulation and application, GMSCs are essential in tissue engineering in dental medicine field.<sup>18,19</sup>

According to previous study, there are standard criteria was suggested for MSCs characterization (i) stick to culture plate in culture conditions; (ii) have osteogenic, chondrogenic, and adipogenic ability, (iii) specific marker expression (positive CD73, CD90 and CD105 expression; negative marker of HSCs).<sup>4,11</sup> GMSCs cultured cell morphology was showed fibroblast-spindle-shaped, colony-forming abilities, and stick to the culture plate in our study.

GMSCs have widely available population for therapeutic applications because of the accessibility of animal model or human gingival tissues. GMSCs contain subpopulations of various cells. Therefore, GMSCs should be purity to prevent fibroblast contamination is critically important.<sup>1,11</sup> The GMSCs phenotypic characterization has been extensively and widely documented.<sup>20</sup> Our study result, detected the positive MSCs marker of CD44, CD73, CD90, CD105 and negative expressed HSCs marker of CD34 and CD45 using immunofluorescence. This result was in accordance the International

Society for Cellular Therapy position statement about MSCs marker profile.<sup>21</sup>

The most general cells sorting method by cell surface markers using flowcytometry. Flowcytometry detected the specific subpopulation enriched with certain surface makers.<sup>8</sup> GMSCs showed classical characteristics of multipotent postnatal stem/progenitor cells.<sup>4</sup> Our study showed that MSCs marker (CD44, CD73, CD90, CD105) expression and did not expressed HSCs marker (CD34, and CD45). The GMSCs' immunophenotypic profiles using flowcytometry and immunocytochemistry further verified our MSCs culture without HSCs contamination.<sup>22</sup>

## Conclusions

Gingival tissues are promising future Stem Cell source. GMSCs have multipotency ability with high rate proliferation and MSCs characteristic that advantageous for regenerative medicine therapy through tissue engineering.

## References

1. Venkatesh D, Kumar K, Alur J.B. Gingival mesenchymal stem cells. *J Oral Maxillofac Pathol.* 2017;21(1):30-35.
2. Izumi Y, Aoki A, Yamada Y, et al. Current and future periodontal tissue engineering. *Periodontol* 2000. 2011;56(1):166-187.
3. Effendi MC, Bachtiar BM, Winiati E, Herda E. The Effect of Nanoparticle Mineral Trioxide (NMT) on The Proliferation and Differentiation of Stem Cells Human Exfoliated Deciduous to Odontoblasts. *J Int Dent Med Res.* 2015;5(2):68-76.
4. Jin SH, Lee JE, Yun J-H, Kim I, Ko Y, Park JB. Isolation and characterization of human mesenchymal stem cells from gingival connective tissue. *J Periodontal Res.* 2015;50(4):461-467.
5. Rios HF, Lin Z, Oh B, Park CH, Giannobile W V. Cell- and Gene-Based Therapeutic Strategies for Periodontal Regenerative Medicine. *J Periodontol.* 2011;82(9):1223-1237.
6. Hynes K, Menicanin D, Gronthos S, Bartold PM. Clinical utility of stem cells for periodontal regeneration. *Periodontol* 2000. 2012;59(1):203-227.
7. Huang GT-J, Gronthos S, Shi S. Mesenchymal stem cells derived from dental tissues vs. those from other sources: their biology and role in regenerative medicine. *J Dent Res.* 2009;88(9):792-806.
8. Fawzy El-Sayed KM, Dörfer CE. Gingival Mesenchymal Stem/Progenitor Cells: A Unique Tissue Engineering Gem. *Stem Cells Int.* 2016;2016..
9. Larjava H, Wiebe C, Gallant-Behm C, Hart DA, Heino J, Häkkinen L. Exploring scarless healing of oral soft tissues. *J Can Dent Assoc (Tor).* 2011;77.
10. El-Sayed KMF, Paris S, Graetz C, Kassem N. Isolation and characterisation of human gingival margin-derived STRO-1/MACScamp;plus; and MACS- cell populations. *Int J Oral Sci.* 2014;80-88.
11. Du L, Yang P, Ge S. Isolation and characterization of human gingiva-derived mesenchymal stem cells using limiting dilution method. *J Dent Sci.* 2016;11(3):304-314.

12. Rantam F, Ferdiansyah MN PA. *Stem Cell Exploration. Methods of Isolation and Culture*. 2nd ed. Surabaya: Airlangga University Press; 2009.
13. Fujii S, Maeda H, Wada N, Tomokiyo A, Saito M, Akamine A. Investigating a clonal human periodontal ligament progenitor/stem cell line in vitro and in vivo. *J Cell Physiol*. 2008;215(3):743-749.
14. Feng F, Akiyama K, Liu Y, et al. Utility of PDL progenitors for in vivo tissue regeneration: A report of 3 cases. *Oral Dis*. 2010;16(1):20-28.
15. Saskianti T, Ramadhani R, Budipramana ES, Pradopo S, Suardita K. Potential Proliferation of Stem Cell from Human Exfoliated Deciduous Teeth (SHED) in Carbonate Apatite and Hydroxyapatite Scaffold. *J Int Dent Med Res*. 2017;10(2):350-353.
16. Gronthos S, Brahimi J, Li W, et al. Stem cell properties of human dental pulp stem cells. *J Dent Res*. 2002;81(8):531-535.
17. Zhang Q, Shi S, Liu Y, et al. Mesenchymal Stem Cells Derived from Human Gingiva Are Capable of Immunomodulatory Functions and Ameliorate Inflammation-Related Tissue Destruction in Experimental Colitis. *J Immunol*. 2009;183(12):7787-7798.
18. Hsu S hui, Huang GS, Feng F. Isolation of the multipotent MSC subpopulation from human gingival fibroblasts by culturing on chitosan membranes. *Biomaterials*. 2012;33(9):2642-2655.
19. Soeroso Y, Bachtiar EW, Bachtiar Boy M, Sulijaya B, Prayitno SW. The Prospect of chitosan on the osteogenesis of periodontal ligament stem cells. *J Int Dent Med Res*. 2016;9(2):93-97.
20. Ge S, Mroczek KM, Menicanin D, Gronthos S, Bartold PM. Isolation and characterization of mesenchymal stem cell-like cells from healthy and inflamed gingival tissue: potential use for clinical therapy. *Regen Med*. 2012;7(6):819-832.
21. Dominici M, Le Blanc K, Mueller I, et al. Minimal criteria for defining multipotent mesenchymal stromal cells. The International Society for Cellular Therapy position statement. *Cytotherapy*. 2006;8(4):315-317.
22. Nugraha, AP, Narmada, IB., Emawati, DS., Dinaryanti, A., Hendrianto, E., Ihsan IS., Riawan, W., Rantam, FA. Osteogenic potential of gingival stromal progenitor cells cultures in platelet rich fibrin is predicted by core-binding factor subunit- $\alpha 1$ /Sox9 expression ratio (in vitro). *F1000Research*. 2018; 7(1134): 4.



# Gingival Mesenchymal Stem Cells from Wistar

## ORIGINALITY REPORT

24%

SIMILARITY INDEX

17%

INTERNET SOURCES

22%

PUBLICATIONS

2%

STUDENT PAPERS

## PRIMARY SOURCES

1

[sevgiligiyim.com](http://sevgiligiyim.com)

Internet Source

3%

2

[f1000research.com](http://f1000research.com)

Internet Source

2%

3

Jin, S. H., J. E. Lee, J-H. Yun, I. Kim, Y. Ko, and J. B. Park. "Isolation and characterization of human mesenchymal stem cells from gingival connective tissue", Journal of Periodontal Research, 2014.

Publication

2%

4

[www.ncbi.nlm.nih.gov](http://www.ncbi.nlm.nih.gov)

Internet Source

2%

5

[www.scribd.com](http://www.scribd.com)

Internet Source

1%

6

Pratiwi Soesilawati, Harianto Notopuro, Yuliati Yuliati, Maretaningtias Dwi Ariani, Muhammad Alwino Bayu Firdauzy. "

1%

The role of salivary sIgA as protection for dental caries activity in Indonesian children

", Clinical, Cosmetic and Investigational  
Dentistry, 2019

Publication

---

7

Karim M. Fawzy El-Sayed, Christof E. Dörfer.  
"Gingival Mesenchymal Stem/Progenitor Cells:  
A Unique Tissue Engineering Gem", Stem Cells  
International, 2016

Publication

---

1%

8

D. Ponnaiyan, K.M. Bhat, G.S. Bhat.  
"Comparison of Immuno-Phenotypes of Stem  
Cells from Human Dental Pulp and Periodontal  
Ligament", International Journal of  
Immunopathology and Pharmacology, 2012

Publication

---

1%

9

CRS Prakoeswa, FR Natallya, D Harnindya, A  
Thohiroh et al. "The efficacy of topical human  
amniotic membrane-mesenchymal stem cell-  
conditioned medium (hAMMSC-CM) and a  
mixture of topical hAMMSC-CM + vitamin C and  
hAMMSC-CM + vitamin E on chronic plantar  
ulcers in leprosy: A randomized control trial",  
Journal of Dermatological Treatment, 2018

Publication

---

1%

10

Rodrigo A. Somoza, Cristian A. Acevedo,  
Fernando Albornoz, Patricia Luz-Crawford et al.  
" TGF 3 secretion by three-dimensional cultures  
of human dental apical papilla mesenchymal

1%

stem cells ", Journal of Tissue Engineering and Regenerative Medicine, 2017

Publication

---

11	<a href="http://www.dovepress.com">www.dovepress.com</a> Internet Source	1%
12	<a href="http://www.mdpi.com">www.mdpi.com</a> Internet Source	1%
13	<a href="http://onlinelibrary.wiley.com">onlinelibrary.wiley.com</a> Internet Source	1%
14	<a href="http://tessera.spandidos-publications.com">tessera.spandidos-publications.com</a> Internet Source	1%
15	<a href="http://pastebin.com">pastebin.com</a> Internet Source	1%
16	<a href="http://medcraveonline.com">medcraveonline.com</a> Internet Source	1%
17	Stem Cell Biology and Regenerative Medicine, 2016. Publication	1%
18	Sanz, Antonio R., Flavio S. Carrión, and Alejandra P. Chaparro. "Mesenchymal stem cells from the oral cavity and their potential value in tissue engineering", Periodontology 2000, 2015. Publication	1%
19	De-Hua Zheng, Zhi-Qiang Han, Xu-Xia Wang,	

---

Dan Ma, Jun Zhang. "Erythropoietin attenuates high glucose-induced oxidative stress and inhibition of osteogenic differentiation in periodontal ligament stem cell (PDLSCs)", *Chemico-Biological Interactions*, 2019

Publication

<1%

20

[jipbs.com](http://jipbs.com)

Internet Source

<1%

21

Desi Sandra Sari, Ernie Maduratna, Fourier Dzar Eljabbar Latief, Alexander Patera Nugraha, Ketut Sudiana, Fedik Abdul Rantam.

"Osteogenic Differentiation and Biocompatibility of Bovine Teeth Scaffold with Rat Adipose-derived Mesenchymal Stem Cells", *European Journal of Dentistry*, 2019

Publication

<1%

22

[irep.iium.edu.my](http://irep.iium.edu.my)

Internet Source

<1%

23

[www.wjgnet.com](http://www.wjgnet.com)

Internet Source

<1%

24

Quan Sun, Hidemi Nakata, Maiko Yamamoto, Shohei Kasugai, Shinji Kuroda. "Comparison of gingiva-derived and bone marrow mesenchymal stem cells for osteogenesis", *Journal of Cellular and Molecular Medicine*, 2019

Publication

<1%

25	<a href="http://refubium.fu-berlin.de">refubium.fu-berlin.de</a> Internet Source	<1%
26	<a href="http://www.mitsiadis.com">www.mitsiadis.com</a> Internet Source	<1%
27	<p data-bbox="240 449 1211 558">Han, J., D. Menicanin, V. Marino, S. Ge, K. Mrozik, S. Gronthos, and P. M. Bartold.</p> <p data-bbox="240 575 1284 825">"Assessment of the regenerative potential of allogeneic periodontal ligament stem cells in a rodent periodontal defect model", <i>Journal of Periodontal Research</i>, 2013.</p> <p data-bbox="240 842 391 867">Publication</p>	<1%
28	<a href="http://joddd.tbzmed.ac.ir">joddd.tbzmed.ac.ir</a> Internet Source	<1%
29	<a href="http://raiith.iith.ac.in">raiith.iith.ac.in</a> Internet Source	<1%
30	<p data-bbox="240 1260 1338 1581">Karim M. Fawzy El-Sayed, Daniela Hein, Christof E. Dörfer. "Retinol/inflammation affect stemness and differentiation potential of gingival stem/progenitor cells via Wnt/<math>\beta</math>-catenin", <i>Journal of Periodontal Research</i>, 2019</p> <p data-bbox="240 1591 391 1623">Publication</p>	<1%
31	<p data-bbox="240 1688 1276 2001">Jie Yang, Ming-Tang He, Xun Huang, Qiu-Shi Wang, Jiang Pi, Hua-Jun Wang, Ali Hasan Rahhal, Si-Min Luo, Zhen-Gang Zha. "Atomic Force Microscopy-Based Nanoscopy of Chondrogenically Differentiating Human</p>	<1%

# Adipose-Derived Stem Cells: Nanostructure and Integrin $\beta$ 1 Expression", Nanoscale Research Letters, 2018

Publication

---

32

## Bioreactor Systems for Tissue Engineering II, 2010.

Publication

---

<1%

---

Exclude quotes      On

Exclude matches      Off

Exclude bibliography      On

# Gingival Mesenchymal Stem Cells from Wistar

---

## GRADEMARK REPORT

---

FINAL GRADE

**/100**

GENERAL COMMENTS

**Instructor**

---

PAGE 1

---

PAGE 2

---

PAGE 3

---

PAGE 4

---

PAGE 5

---

PAGE 6

---

PAGE 7

---