

# DNA Barcoding: A Study of Guppy Fish (*Poecilia reticulata*) in East Java, Indonesia

*by* Sucipto Hariyanto

---

**Submission date:** 09-Mar-2020 06:44PM (UTC+0800)

**Submission ID:** 1272185681

**File name:** dy\_of\_Guppy\_Fish\_Poecilia\_reticulata\_in\_East\_Java,\_Indonesia.pdf (850.49K)

**Word count:** 3784

**Character count:** 19774



## DNA Barcoding: A Study of Guppy Fish (*Poecilia reticulata*) in East Java, Indonesia

Sucipto Hariyanto<sup>✉</sup>, Hasan Adro'i, Mahrus Ali, Bambang Irawan

DOI: <http://dx.doi.org/10.15294/biosaintifika.v11i2.20222>

Department of Biology, Faculty of Science and Technology, Universitas Airlangga, Indonesia

### History Article

Submitted 15 June 2019  
Revised 17 July 2019  
Accepted 22 August 2019

### Keywords

*Poecilia reticulata*; DNA barcoding; COI gene; Phylogeny

### Abstract

*Poecilia reticulata* is a freshwater fish from the northeastern part of South America and spread widely to various countries in Asia and other continents. However, research about *P. reticulata* is limited even though it is a well-known fish species in Indonesia. The purpose of study was to identify the fish species of *P. reticulata* through DNA barcoding using the COI gene to determine the phylogenetic relationships among fish populations in East Java, Indonesia. In a present study, there were eight samples of *P. reticulata* from four different freshwater locations in East Java. Extraction, amplification, and sequencing of DNA samples were conducted to obtain the genetic data and construct a phylogenetic tree based on DNA sequences. The COI gene is the most popular markers to study genetic populations and phylogeography among the animal kingdom. Our phylogenetic reconstruction showed a clear that there were two groups of *P. reticulata*. The first group was obtain through species from East Java, Sukabumi, West Java (KU692776.1), Dominican Republic, Pandeglang, Banten and Myanmar. The second group was *P. reticulata* from southern Africa, Brazil, and Sukabumi, West Java (KU692775.1). The result of this study indicate that the guppy fish in East Java identic with *P. reticulata* from West Java (KU692776.1), which a widely used in classification based on evolutionary relationships. The findings of this study have important implication for the development of advance research about adaptation, phylogeny, and evolution of fish, especially of guppy fish.

### How to Cite

Hariyanto, S., Adro'i, H., Ali, M., & Irawan, B. (2019). DNA Barcoding: A Study of Guppy Fish (*Poecilia reticulata*) in East Java, Indonesia. *Biosaintifika: Journal of Biology & Biology Education*, 11(2), 272-278.

<sup>✉</sup> Correspondence Author:  
Campus C Universitas Airlangga, Mulyorejo, Surabaya 60115  
E-mail: [sucipto-h@fst.unair.ac.id](mailto:sucipto-h@fst.unair.ac.id)

## INTRODUCTION

The guppy (*Poecilia reticulata*) is a freshwater fish and a member of the Poeciliidae family. Guppies are originated from the northeastern part of South America and have been introduced to many countries on every continent including Asia. Male guppies are smaller than the females. The males have a maximum length of 3.5 cm and the females are 6 cm in size. Female guppies have silvery colour with thin fins and larger than the males. Male guppies are polymorphisms. They have various combinations of colour patterns especially on the sides of the body and fins (Froese & Pauly, 2018). *P. reticulata* has several roles and benefits in life, including predators of several disease-causing mosquito larvae (Saleeza et al., 2014), used as ornamental aquarium fish (Singh et al., 2010), and act as an indicator of quality in the aquatic environments (Sarikaya et al., 2017).

There are 213 species of freshwater fish in the Java Island, Indonesia. Several species are endemic, but their ecosystem and biota are currently threatened (Hubert et al., 2015). In the Sunda area, the threatened biodiversity has increased over the past few centuries (Hoffman et al., 2010). The diversity and distribution of freshwater fish provide different data in the Java Island. Suryaningsih et al. (2018) revealed that *P. reticulata* can be found in the upper and middle parts of the river flow. *P. reticulata* is easily found in various area and widespread throughout the world (Deacon et al., 2011). *P. reticulata* can adapt even in polluted waters (Araujo et al., 2009), but research on genotypic variations related to environmental conditions is limited (Tezuka et al., 2011). The previous research with DNA barcoding demonstrated that genotypic variation of fish species in Java and Bali islands had a very large genetic distance even though in the same species (Dahrudin et al., 2016) and DNA barcoding of fin clip samples from fish can be used to biodiversity study in definite area and also in forensic analysis of a threatened wildlife (Nuryanto et al., 2018).

Molecular data is more widely used to make phylogenetic trees. It is because the data will be more stable in the evolutionary process compared to the morphological data (Dharmayanti, 2018). The activity of DNA barcoding based on fragments of the COI gene in the mitochondrial genome has been generally applied to identification and research of animal biodiversity including fish (Bingpeng, 2018). DNA barcoding can also be carried out to recognize species in terrestrial waters. Therefore, it can be used to monitor their

distribution on the lake, river, and water ecosystems in Indonesia (Hubert et al., 2015). Species identification is essential for bio-conservation, preventing illegal exploitation, and protecting the species (Ciavaglia et al., 2015; Meganathan et al., 2013). However, study on *P. reticulata* is limited even though it spreads widely in Indonesia (Hubert et al., 2015).

The benefit of this investigation will help other researchers a new understanding of ecology, evolution, and classification on fish and especially of guppy fish. The purpose of the present study was to identify *P. reticulata* through DNA barcoding using the cytochrome c oxidase subunit I (COI) gene. It was expected to be useful to determine the phylogenetic relationship between *P. reticulata* populations in East Java, particularly in the river.

## METHODS

### Study Area and Sampling

The sampling process were conducted from January to February 2018. The fish were obtained from the freshwater river in Surabaya, Jombang, Malang, and Batu (Figure 1). Determination of sampling locations was performed based on the abundance of *P. reticulata* populations and their accessibility in the sampling process. The eight fish samples were obtained with 2 fish from each sampling location. Each sample was given a code based on the origin of the sample location (A1, A2, B1, B2, C1, C2, D1, and D2) (Table 1).



Figure 1. Sampling Location in four City or Regency, East Java.

### DNA Extraction

The isolation, amplification, and observation process of DNA band sequencing was performed in the Molecular Genetic Laboratory of the Faculty of Science and Technology, Airlangga University, Surabaya. The DNA was isolated from muscle tissue or meat of fish using Jena

**Table 1.** Sampling locations

Sample Code	Sampling Location (City/ Regency)	Coordinate
A1	Surabaya	7°16'36,1"LS 112°45'44,9"BT
A2		
B1	Jombang	7°26'24,1"LS 112°17'45,5"BT
B2		
C1	Malang	8°03'55,3"LS 112°37'48,4"BT
C2		
D1	Batu	7°51'54,0"LS 112°31'45,1"BT
D2		

**Table 2.** PCR materials

Material	Concentration	Volume (µL)
kit KAPA2G Fast ReadyMix	1x	24
Primer FishF1	0.5 Mm	2.5
Primer FishR1	0.5 Mm	2.5
ddH <sub>2</sub> O	-	16
DNA sample	10-100 ng	2
Total	-	50

**Table 3.** PCR Condition

Step	Temperature (°C)	Volume (µL)	Cycle
Pre-denaturation	96	3	1
Denaturation	96	0.5	40
Annealing	55	0.5	40
Extension	72	0.5	40
Post-extension	72	5	1

Bioscience reagent kit. It was performed using a column tube centrifugation method containing silicon to collect DNA from fish and clean up from the other impurities. DNA samples obtained from the isolation process can be directly used for DNA used for the next step, namely DNA amplification. If the isolated DNA sample is not used, it must be stored at -20°C.

**DNA Amplification**

DNA amplification was conducted by Polymerase Chain Reaction (PCR) method. It was done to obtain DNA from the COI gene. The copy of the DNA was performed using several materials and conditions according to Table 2 and Table 3. Therefore, the sequencing process can be done. After DNA amplification was carried out, electrophoresis was performed to examine the DNA samples and the base pairs (bp). The amplified target DNA was from the mitochondrial COI gene with a base length of around 600 bp.

**DNA Sequencing**

DNA samples with a pair of FishF1 and FishR1 primer were delivered to First BASE Laboratory through Genetics Science Indonesia Company, Jakarta, Indonesia. Data from DNA band sequencing was obtained within two weeks. The results of DNA nucleotide bases (A, T, G, and C) along with graphs of sequential chromatograms were obtained through the website of [download.base-asia.com](http://download.base-asia.com).

**Data Analysis**

Forward and Reverse sequencing were performed to obtain DNA sequences. Then, trimming process was performed. MEGA6 software was used to combine a pair of DNA sequences in order to produce a nucleotide base sequence from each sample. Basic Local Alignment Search Tool (BLAST) analysis was conducted by using a nucleotide bases sequence. BLAST analysis was

performed to examine the genetic species from each sample. It was obtained through alignment with data on the nucleotide base sequence from GenBank data. MEGA6 software was also used to compile phylogenetic trees based on the DNA bands sequence for each sample. Phylogenetic trees were made by using sequence data from this study and GenBank. The Neighbor-Joining Tree method with Bootstrap 1000 times was used to make the phylogenetic trees.

## RESULTS AND DISCUSSION

A pair of primers will flank the desired sequence area on the DNA sample for amplification. DNA polymerase acts to compile a new DNA band based on the area flanked by a pair of primer. The mixture of the primer ingredients, nucleotides, and DNA polymerase will be able to react in the PCR machine (thermal cycler). It can carry out heating and cooling cycles automatically. Each cycle takes several minutes. PCR generates billions copies of DNA band. DNA samples can be useful to analyze various purposes (Audesirk, 2012).

In the present study, eight samples of *P. reticulata* were utilized for observation. The amplification results of A1, A2, B1, B2, C1, C2, D1, and D2 demonstrated a visible band with a base length between 500 - 750 bp (Figure 2). The bands of A1 and A2 samples were more visible than bands of B1, B2, C1, C2, D1, and D2 (Figure 3). According to Lee et al. (2002), the distinct of DNA band thickness indicated the distinct of DNA concentrations. The higher DNA concentration indicated the more visible of DNA band. It revealed that A1 and A2 samples had higher DNA concentrations compared to B1, B2, C1, C2, D1, and D2 sample. DNA bands on gel electrophoresis that have more extensive base lengths will migrate slowly from the negative pole to the positive pole, while DNA bands that have smaller base lengths can migrate more quickly (Lee et al., 2002).

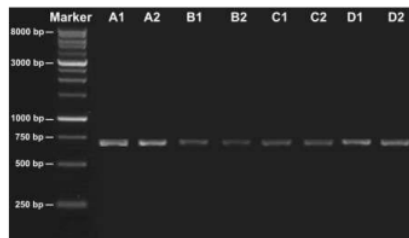
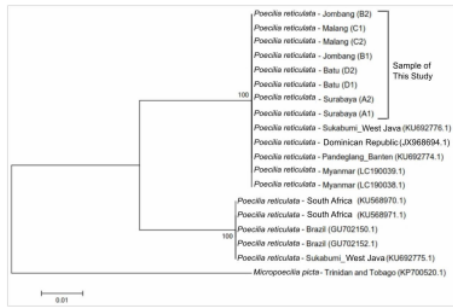


Figure 2. DNA electrophoresis result of COI gene

Fish F1 and Fish R1 primers were used to determine the length of PCR amplification fragments. The result of PCR amplification with the COI gene, Fish F1 and Fish R1 primers demonstrated that each sample had more than 500 bp in size (Figure 3). According to Hebert et al. (2003), barcoding COI gene should be 648 bp in length. Sequences of COI genes are larger than 500 bp on the edge of the 5' COI gene with sufficient information can be categorized in GenBank as DNA barcodes (Benson et al., 2005). DNA barcoding is useful to identify a species by comparing the DNA nucleotide (nitrogen base) sequence to the same gene from other known species. In addition, DNA barcoding has been widely used for identifying the taxonomic status of a species but not among individuals in the same species. This approach has proven to be useful in animal kingdom when using parts of the mitochondrial COI gene (CBOL, 2009). The mitochondrial COI gene is the most popular markers for the study of genetic populations and phylogeography among the animal kingdom. The COI gene has high base nitrogen of Adenosine and Thymine and high level of nucleotide variation. COI gene also can be used for the identification of marine nematode species (Derycke et al., 2010) and fish species (Chang et al., 2016).

In the present study, DNA sequences from *P. reticulata* in East Java and sample sequences from GenBank's, were combined to compile phylogeny trees. There were two groups of *P. reticulata*, which were formed from 18 samples of *P. reticulata* and one species of *Micropoecilia picta* used as out groups. The first group was obtained from *P. reticulata* species in East Java (A1, A2, B1, B2, C1, C2, D1, and D2); Sukabumi, West Java (KU692776.1); Dominican Republic (JX968694.1); Pandeglang, Banten (KU692774.1); and Myanmar (LC190039.1 and LC190038.1), while the second group was obtained from southern Africa (KU568970.1 and KU568971.1); Brazil (GU702150.1 and GU702152.1); and Sukabumi, West Java (KU692775.1) (Figure 3). There are two groups of *P. reticulata* because they live in a different environment even though they are from the same species. Therefore, it urgently needs to investigate the second group. Phylogenetic are the relationship based on the composition of DNA or protein sequences that are similar to examine the evolutionary process (Baldauf, 2003). The phylogeny tree provides information about population classification based on evolutionary relationships.



**Figure 3.** Phylogeny trees based on DNA sequences along with secondary data from Gen Bank (species name followed by origin area and sample code)

Guppy fish (*P. reticulata*) studied in this research (Surabaya, Jombang, Malang, and Batu) was in one group with *P. reticulata* species from the Sukabumi area, West Java (KU692776.1), Dominican Republic (JX968694.1), Pabdeglang, Banten (KU692774.1), and Myanmar (LC190039.1 and LC190038.1). However, they are separated from the second group for those from southern Africa (KU568970.1 and KU568971.1); Brazil (GU702150.1 and GU702152.1); and Sukabumi, West Java (KU692775.1) because they have a very identical sequence of nucleotide bases of 100% (Figure 4).

*P. reticulata* studied in this study was separate from the *P. reticulata* group originating from southern Africa (KU568970.1 and KU568971.1); Brazil (GU702150.1 and GU702152.1); and Sukabumi, West Java (KU692775.1) because they only have a lower level of similarity, which is 95% among nucleotide base sequences. There are 27 different nucleotide bases between the 2 groups of *P. reticulata* after the analysis (Figure 5). Previous research conducted by Dahrudin et al. (2016) showed that the *P. reticulata* group had a substantial genetic distance even in similar species with a value difference of 4.77%. The introduction of new species and hybridization among descendants in different populations increase the genetic variation (Kolbe et al., 2004), and the introduction of new species can construct a new genotypes (Ellstrand & Schierenbeck, 2000), and disguise adverse mutations (Loewe & Hill, 2010). Tarallo et al. (2016) revealed that salinity and migration affect not only the physiological and morphological characters but also the genes character (nucleotide base consist of G and C) of teleost. These factors increase the invasion and adaptation to new areas (Perry et al., 2001). DNA barcoding has been widely used to identify a gene

species by comparing nucleotide sequences. The mitochondrial of COI gene is the most popular markers to study genetic populations and phylogeography, particularly in fish. Phylogenetic is the relationship based on identical DNA or protein sequence composition to estimate the evolutionary process and evolutionary relationships of living things.

Score	Expect	Identities	Gaps	Strand
1038 bits(562)	0.0	562/562(100%)	0/562(0%)	Plus/Plus
Query 1	TGATTCGAGCGAAGCTCAGCAACAGGGGCTCTGGGAGATGATCAAAATTTATAATG	60		
Sbjct 60	TT	119		
Query 61	TAAATGTTACAGCTCATGCTTTGTAATAATCTTTTTATAGTATGCGCAATCATAATG	120		
Sbjct 120	TAAATGTTACAGCTCATGCTTTGTAATAATCTTTTTATAGTATGCGCAATCATAATG	179		
Query 121	GAGGCTTCGGTAATTGATTAGTTCATTAAATAATCGGCGCTCTGACATGGCTTTTCCC	180		
Sbjct 180	GAGGCTTCGGTAATTGATTAGTTCATTAAATAATCGGCGCTCTGACATGGCTTTTCCC	239		
Query 181	GAATAAATAATTAAGCTCTGACTTTTACACCCTGATTTCTCTCTCATCATCT	240		
Sbjct 240	GAATAAATAATTAAGCTCTGACTTTTACACCCTGATTTCTCTCTCATCATCT	299		
Query 241	CTGGGCTGGAGCGAGAGCGGTACAGGATGAATGTTATCTCCCTTGCAGCAATT	300		
Sbjct 300	CTGGGCTGGAGCGAGAGCGGTACAGGATGAATGTTATCTCCCTTGCAGCAATT	359		
Query 301	TAGCCACGCTGGACCATCTGTAGATTAACTATTTTTCACTTCACTTGGCGGATATT	360		
Sbjct 360	TAGCCACGCTGGACCATCTGTAGATTAACTATTTTTCACTTCACTTGGCGGATATT	419		
Query 361	CTTCCATTAGGAGCAATTAACCTTCACTTACACCTATTAATAAACAACCTCGAG	420		
Sbjct 420	CTTCCATTAGGAGCAATTAACCTTCACTTACACCTATTAATAAACAACCTCGAG	479		
Query 421	CATCAAAATCAAAACACTTTTATGATGATCTGTAATAATCAGGGCGCTCTCGC	480		
Sbjct 480	CATCAAAATCAAAACACTTTTATGATGATCTGTAATAATCAGGGCGCTCTCGC	539		
Query 481	TTCTCCCTCCCGTTCTCGCGAGGATTAACACTTCTTACAGACGGAACTAA	540		
Sbjct 540	TTCTCCCTCCCGTTCTCGCGAGGATTAACACTTCTTACAGACGGAACTAA	599		
Query 541	ACACCACCTTCTCGACCTCG	562		
Sbjct 600	ACACCACCTTCTCGACCTCG	621		

**Figure 4.** The sequences of nitrogen DNA base is identical between the sample of this study and other research samples

Score	Expect	Identities	Gaps	Strand
883 bits(478)	0.0	534/562(95%)	0/562(0%)	Plus/Plus
Query 1	TGATTCGAGCGAAGCTCAGCAACAGGGGCTCTGGGAGATGATCAAAATTTATAATG	60		
Sbjct 57	TGATTCGAGCGAAGCTCAGCAACAGGGGCTCTGGGAGATGATCAAAATTTATAATG	116		
Query 61	TAAATGTTACAGCTCATGCTTTGTAATAATCTTTTTATAGTATGCGCAATCATAATG	120		
Sbjct 117	TAAATGTTACAGCTCATGCTTTGTAATAATCTTTTTATAGTATGCGCAATCATAATG	176		
Query 121	GAGGCTTCGGTAATTGATTAGTTCATTAAATAATCGGCGCTCTGACATGGCTTTTCCC	180		
Sbjct 177	GAGGCTTCGGTAATTGATTAGTTCATTAAATAATCGGCGCTCTGACATGGCTTTTCCC	236		
Query 181	GAATAAATAATTAAGCTCTGACTTTTACACCCTGATTTCTCTCTCATCATCT	240		
Sbjct 237	GAATAAATAATTAAGCTCTGACTTTTACACCCTGATTTCTCTCTCATCATCT	296		
Query 241	CTGGGCTGGAGCGAGAGCGGTACAGGATGAATGTTATCTCCCTTGCAGCAATT	300		
Sbjct 297	CTGGGCTGGAGCGAGAGCGGTACAGGATGAATGTTATCTCCCTTGCAGCAATT	356		
Query 301	TAGCCACGCTGGACCATCTGTAGATTAACTATTTTTCACTTCACTTGGCGGATATT	360		
Sbjct 357	TAGCCACGCTGGACCATCTGTAGATTAACTATTTTTCACTTCACTTGGCGGATATT	416		
Query 361	CTTCCATTAGGAGCAATTAACCTTCACTTACACCTATTAATAAACAACCTCGAG	420		
Sbjct 417	CTTCCATTAGGAGCAATTAACCTTCACTTACACCTATTAATAAACAACCTCGAG	476		
Query 421	CATCAAAATCAAAACACTTTTATGATGATCTGTAATAATCAGGGCGCTCTCGC	480		
Sbjct 477	CATCAAAATCAAAACACTTTTATGATGATCTGTAATAATCAGGGCGCTCTCGC	536		
Query 481	TTCTCCCTCCCGTTCTCGCGAGGATTAACACTTCTTACAGACGGAACTAA	540		
Sbjct 537	TTCTCCCTCCCGTTCTCGCGAGGATTAACACTTCTTACAGACGGAACTAA	596		
Query 541	ACACCACCTTCTCGACCTCG	562		
Sbjct 597	ACACCACCTTCTCGACCTCG	618		

**Figure 5.** The different of DNA sequences between the sample of this study and other research samples

These results of this research serve valuable data about the genotype of fish, especially genotype of species guppy fish in East Java. In addition, data from this study is also important

for further advance research of adaptation, phylogeny, and evolution of fish,

## CONCLUSION

There is a relationship between *P. reticulata* species in East Java from Surabaya, Jombang, Malang and Batu. They are identical and are in the same group in the phylogenetic tree. *P. reticulata* from East Java is also identical and is in the same phylogenetic group with species from other regions such as Sukabumi, West Java (KU692776.1); Pandeglang, Banten; Dominican Republic; and Myanmar even though they are genetically different and placed in different group from *P. reticulata* from the South African; Brazil; and Sukabumi, West Java (KU692775.1).

## REFERENCES

- Araujo, F. G., Peixoto, M.G., Pinto, & Teixeira, T.P. (2009). Distribution of guppies *Poecilia reticulata* (Peters, 1860) and *Phallocceros caudimaculatus* (Hensel, 1868) along a polluted stretch of Paraíba do Sul River, Brazil. *Brazil Journal of Biology*, vol. 69(1), 41-48.
- Audesirk, T., Audesirk, G. & Byers, B.E. (2012). *Biology life on earth*". Sixth edition. New Jersey: Pearson.
- Baldauf, S. L. (2003). Phylogeny for the faint of heart: a tutorial. *Trends in Genetics*. 19(6), 345-351. doi:10.1016/S0168-9525(03)00112-4
- Benson D.A., Karsch-Mizrachi I., Lipman D.J., Ostell J. & Wheeler D.L. (2005). GenBank. *Nucleic Acids Research*. 33, D34–D38. doi:10.1093/nar/gkm929
- Bingpeng, X., Heshan, L., Zhilan, Z., Hunguang, W., Yanguo, W., & Jianjun, W. (2018). DNA barcoding for identification of fish species in the Taiwan Strait. *PLOS ONE*, 13(6), 1-13, e0198109. doi:10.1371/journal.pone.0198109
- CBOL Plant Working Group. (2009). A DNA barcode for land plants. *Proceedings of The National Academy of Sciences of The United States of America*. 106(31), 12794-7. doi:10.1073/pnas.0905845106
- Chang, C-H., Lin H-Y., Ren Q., Lin Y-S. & Shao K-T. (2016). DNA barcode identification of fish product in Taiwan: Government-commissioned authentication cases. *Food Control*. 66, 38-43. doi:10.1111/1755-0998.12601
- Ciavaglia, S. A., Tobe, S.S., Donellan, S.C., Henry, J.M. & Linacre, A.M.T. (2015). Molecular identification of phyton species: development and validation of a novel assay for forensic investigations. *Forensic Science International: Genetics*, 16, 64-70. doi:10.1016/j.fsigen.2014.12.002
- Dahrudin, H., Hutama, A., Busson, F., Sauri, S., Hanner, R., Keith, P., Hadiaty, R. & Hubert, N. (2016). Revisiting the ichthyodiversity of Java and Bali through DNA barcodes: taxonomic coverage, identification accuracy, cryptic diversity and identification of exotic species. *Molecular Ecology*, 1-12. doi: 10.1111/1755-0998.12528.
- Deacon, A. E., Ramnarine, I.W., & Magurran, A.E. (2011). How reproductive ecology contributes to the spread of a globally invasive fish. *PLOS ONE*, 6(9), 1-8, :e24416. doi:10.1371/journal.pone.0024416
- Derycke, S., Vanaverbeke J., Rigaux A., Bacheljau T. & Moens T. (2010). Exploring the use of cytochrome c oxidase subunit 1 (COI) for DNA barcoding of free-living marine nematodes. *PLoS ONE*. 5(10), e13716.
- Ellstrand, N. C. & Schierenbeck, K. A. (2000). Hybridization as a stimulus for the evolution of invasiveness in plants? *Proceedings of The National Academy of Science. USA*. 97(13), 7043-7050. doi:10.1073/pnas.97.13.7043
- Froese, R. & Pauly, D. (2018). Fishbase. World. Wide Web electronic publication. [www.fishbase.org](http://www.fishbase.org). Accessed on 28 December 2018.
- Hebert, P. D. N., Ratnasingham, S. & de Waard, J.R. (2003). Barcoding animal life: cytochrome c oxidase subunit 1 divergences among closely related species. *Proceedings of the Royal Society of London. Series B, Biological Sciences*, 270, S96–S99.
- Hoffman, M., Hilton-Taylor, C., Angulo, A., Bohm, M., Brooks, T.M., & Butchart, S.H.M. (2010). The impact of conservation of the status of the world's vertebrates. *Sciences*, 330, 1503-1509.
- Hubert, N., Kadarusman, Wibowo, A., Busson, F., Caruso, D., Sulandari, S. Nafiqoh, N., Pouyau, L., Ruber, L., Avarre, J., Herder, F., Hanner, R., Keith, P. & Hadiaty, R.K. (2015). DNA barcoding Indonesian freshwater fishes: challenges and prospects. *DNA Barcode*, 3, 144-169. doi: 10.1515/dna-2015-0018.
- Indi Dharmayanti, N. LP. (2011). Filogenetika molekuler: metode taksonomi organisme berdasarkan sejarah evolusi". *Wartazoa*, 21(1), 1-10.
- Kolbe, J. J., Glor, R. E., Schettino, L.R.G., Lara, A.C. & Losos, J.B. (2004). Genetic variation increases during biological invasion in Cuban lizard. *Nature*. 431(7005), 177-181. doi:10.1038/nature02807
- Lee, P. Y., Costumbrado, J., Hsu, C-Y. & Kim, Y.H. (2002). Agarose gel electrophoresis for the separation of DNA fragments. *Journal of Visualized Experiment*, 62, 3923. doi:10.3791/3923
- Loewe, L. & Hill, W.G. (2010). The Population genetics of mutations: good, bad and indifferent. (2010). *Phil. Trans. R. Soc. B.*, 365, 1153–1167. doi:10.1098/rstb.2009.0317
- Meganathan, P. R., Dubey, B., Jogayya, K.N. & Haque, I. (2013). Identification of Indian crocodile species through DNA barcodes. *Journal of Forensic Sciences*, 58(4), 993-998. doi:10.1111/1556-4029.12129
- Nuryanto, A., Pramono, H., Kusbiyanto, Ghifari,

- M.I., & Andareswari, N. (2018). Barcoding of Fin Clip Samples Revealed High Exploitation of *Plectropomus leopardus* in Spermonde Archipelago, *Biosaintifika*, 10(3), 629-635. doi: 10.15294/biosaintifika.v10i3.16142.
- Perry, W. L., Freder, J. L., Dwyer, G. & Lodge, D.M. (2001). Hybrid zone dynamics and species replacement between *Orconectes crayfishes* in a Northern Wisconsin lake. *Evolution*. 55(6), 1153-1166.
- Saleeza, S. N., Norma-Rashid, Y. & Sofian-Azirun, M. (2014). Guppies as predators of common mosquito larvae in Malaysia. *Southeast Asian J. Trop. Med. Public Health*, 45(2), 299-308,.
- Sarikaya, M., Selvi, M., Kocak, O., & Erkoc, F. (2017). Investigation of acute toxicity of fenitrothion on guppies *Poecilia reticulata*. *Journal of Applied Toxicology*, 27(4), 318-321. doi:10.1002/jat.1193
- Singh, A. S., Mandal, S.C. & Barman, A.D. (2010). Selective breeding in ornamental fishes – a step toward development in production of new variety. *Aquaculture Europe*, 35(4), 14-16.
- Suryaningsih, S., Sukmaningrum, S., Simanjuntak, S.B.I. & Kusbiyanto, (2018). Diversity and longitudinal distribution of freshwater fish in Klawing River, Central Java, Indonesia. *Biodiversitas*, 19(1), 85-92. doi: 10.13057/biodiv/d190114
- Tarallo, A., Angelini, A., Sanges, R., Yagi, M., Agnisola, C. & D'Onofrio, G. (2016). On the genome base composition of teleosts: the effect of environment and lifestyle. *BMC Genomics* 17, 1-10. doi: 10.1186/s12864-016-2537-1
- Tezuka, A., Yamamoto, H., Yokoyama, J., van Oosterhout, C. & Kawata, M. (2011). The MC1R gene in the guppy (*Poecilia reticulata*): genotypic and phenotypic polymorphisms. *BMC Research Notes*, 4(31), 1-8. doi: 10.1186/1756-0500-4-31.



# DNA Barcoding: A Study of Guppy Fish (*Poecilia reticulata*) in East Java, Indonesia

## ORIGINALITY REPORT

9%

SIMILARITY INDEX

7%

INTERNET SOURCES

5%

PUBLICATIONS

2%

STUDENT PAPERS

## PRIMARY SOURCES

1	<a href="https://journals.plos.org">journals.plos.org</a> Internet Source	1%
2	<a href="https://etd.ohiolink.edu">etd.ohiolink.edu</a> Internet Source	1%
3	<a href="https://meetings.apex.aero">meetings.apex.aero</a> Internet Source	1%
4	Submitted to Universitas Airlangga Student Paper	1%
5	"DNA Barcoding in Marine Perspectives", Springer Science and Business Media LLC, 2016 Publication	1%
6	<a href="https://journal.unnes.ac.id">journal.unnes.ac.id</a> Internet Source	1%
7	Submitted to iGroup Student Paper	<1%
8	Xingtong Liu, Honghong Wang, Borong Lin, Ye Tao, Kan Zhuo, Jinling Liao. "Loop-	<1%

mediated isothermal amplification based on the mitochondrial COI region to detect *Pratylenchus zeae*", *European Journal of Plant Pathology*, 2016

Publication

---

9

Ayako Shoji, Jun Yokoyama, Masakado Kawata. "Molecular Phylogeny and Genetic Divergence of the Introduced Populations of Japanese Guppies, *Poecilia reticulata*", *Conservation Genetics*, 2006

Publication

---

<1 %

10

Lipin Ren, Wei Chen, Yanjie Shang, Fanming Meng, Lagabaiyila Zha, Yong Wang, Yadong Guo. "The Application of COI Gene for Species Identification of Forensically Important Muscid Flies (Diptera: Muscidae)", *Journal of Medical Entomology*, 2018

Publication

---

<1 %

11

[www.avrdc.org](http://www.avrdc.org)

Internet Source

---

<1 %

12

[www.cambridge.org](http://www.cambridge.org)

Internet Source

---

<1 %

13

[www.mdpi.com](http://www.mdpi.com)

Internet Source

---

<1 %

14

"Molecular Markers in Mycology", Springer Science and Business Media LLC, 2017

Publication

---

<1 %

15 John C. Day, Mabintu Mustapha, Rory J. Post. <1 %  
" The subgenus (Diptera: Simuliidae: ) in  
Britain ", Aquatic Insects, 2010  
Publication

---

16 unair.ac.id <1 %  
Internet Source

---

17 worldwidescience.org <1 %  
Internet Source

---

18 Xing Bingpeng, Lin Heshan, Zhang Zhilan, <1 %  
Wang Chunguang, Wang Yanguo, Wang  
Jianjun. "DNA barcoding for identification of  
fish species in the Taiwan Strait", PLOS ONE,  
2018  
Publication

---

Exclude quotes Off

Exclude matches Off

Exclude bibliography On

# DNA Barcoding: A Study of Guppy Fish (*Poecilia reticulata*) in East Java, Indonesia

---

GRADEMARK REPORT

---

FINAL GRADE

GENERAL COMMENTS

**/0**

---

PAGE 1

---

PAGE 2

---

PAGE 3

---

PAGE 4

---

PAGE 5

---

PAGE 6

---

PAGE 7

---