

PAPER • OPEN ACCESS

## Antimicrobial activity of *Streptomyces griseoviridis* K10 against ESBL *Escherichia coli*, MRSA, and other pathogenic microorganisms

To cite this article: M F Warsito *et al* 2020 *IOP Conf. Ser.: Earth Environ. Sci.* **439** 012066

View the [article online](#) for updates and enhancements.

## Table of contents

Volume 439

February 2020

[◀ Previous issue](#)   [Next issue ▶](#)

**The International symposium of Innovative Bio-Production Indonesia on Biotechnology and Bioengineering 2019 23-24 October 2019, Tangerang, Indonesia**

Accepted papers received: 15 January 2020

Published online: 21 February 2020

[Open all abstracts](#)

### Preface

OPEN ACCESS

011001

Preface

[+ Open abstract](#)   [View article](#)   [PDF](#)

OPEN ACCESS

011002

Peer review statement

[+ Open abstract](#)   [View article](#)   [PDF](#)

### Papers

OPEN ACCESS

012001

Ectoine production from putrefactive non-volatile amines in the moderate halophile *Halomonas elongata*

H Nakayama, R Kawamoto and K Miyoshi

[+ Open abstract](#)   [View article](#)   [PDF](#)

OPEN ACCESS

012002

Single Cell Oil Production by Wild Type Strain *Lipomyces starkeyi* Y604

E Agustriana, A B Juanssilfero, A Andriani, Fahrurrozi, R Pangestu and Yopi

[+ Open abstract](#)   [View article](#)   [PDF](#)

OPEN ACCESS

012003

Utilization of Acid-Hydrolysed Microalgal Biomass Collected from Eutrophication-Affected Freshwater Pond as a Substrate for Biogas (Biohydrogen) Production by means of Dark- and Photo-Fermentation

**OPEN ACCESS**

Antimicrobial activity of *Streptomyces griseoviridis* K10 against ESBL *Escherichia coli*, MRSA, and other pathogenic microorganisms

M F Warsito, Isnaeni and I Kusumawati

[+ Open abstract](#)

[View article](#)

[PDF](#)

**OPEN ACCESS**

012067

The Main Parameter Analysis in Developing Low Pressure Biogas Standards

Bendjamin Benny Louhenapessy, Ari Wibowo and Bayu Krishna Murti

[+ Open abstract](#)

[View article](#)

[PDF](#)

**OPEN ACCESS**

012068

Potential Environmental and Economic Impacts of Biofuel Production for the Local Community: A Case Study

M Simamora, S Hama, A Yoshida, S Maulana, U F Firdausy and A Yaman

[+ Open abstract](#)

[View article](#)

[PDF](#)

**JOURNAL LINKS**

[Journal home](#)

[Information for organizers](#)

[Information for authors](#)

[Search for published proceedings](#)

[Contact us](#)

[Reprint services from Curran Associates](#)

## Antimicrobial activity of *Streptomyces griseoviridis* K10 against ESBL *Escherichia coli*, MRSA, and other pathogenic microorganisms

M F Warsito<sup>1</sup>, Isnaeni<sup>2</sup> and I Kusumawati<sup>2</sup>

<sup>1</sup>Research Center for Biotechnology, Indonesian Institute of Sciences (LIPI), Komplek CSC-LIPI Jl. Raya Bogor Km 46, Cibinong-Bogor 16911, West Java, Indonesia.

<sup>2</sup>Faculty of Pharmacy, Airlangga University, Nanizar Zaman Joenoes Building, Jl. Mulyorejo, Surabaya 60155, East Java, Indonesia.

Email: mferdina@gmail.com

**Abstract.** The emergence of resistant pathogenic bacteria is serious threat to global public health. This problem can be address through discovering new antibiotics from nature. *Streptomyces* are known as the source of more than fifty percent commercially available antibiotics, but it is predicted that only less than 5% were identified. *Streptomyces griseoviridis* K10 were fermented in ISP-4 medium pH 7.2 for four days in 32 °C incubated shaker with 150 rpm agitation. The antimicrobial activity of *Streptomyces griseoviridis* K10 were analyzed using diffusion method. The antibiotic production curves were made to determine the optimal antibiotic production time. The result showed that these bacteria had activity against extended-spectrum beta-lactamases (ESBL) *Escherichia coli*, Methicillin-resistant *Staphylococcus aureus* (MRSA), *Pseudomonas aeruginosa* ATCC 27853, *Escherichia coli* ATCC 25922, *S. aureus* ATCC 25923, and *Candida albicans*, with inhibitory zone of 17.25 ± 0.43 mm; 13.95 ± 0.60 mm; 20.96 ± 0.41 mm; 20.64 ± 0.92 mm; 21.73 ± 0.53 mm; and 16.90 ± 1.27 mm, respectively. The antibiotic production was optimum in the second and third days.

### 1. Introduction

Antibiotics resistance is a serious threat to global public health [1,2]. Although there is considerable progress in the fields of chemical synthesis and engineered biosynthesis of antimicrobial compounds, most antibiotics are too complex to synthesize [3]. One of the strategies to address such crisis is by discovering and developing new antibiotics from nature.

Microorganisms have been an enormous source of biodiversity and chemical diversity. They have capability to produce highly complex molecules from common nutrients in the fermentation process. They become the main source drugs and often used in the industrial-scale production of drugs [4]. Terrestrial derived microorganisms have been the most important resource for discovery of new drugs, especially actinomycetes. Streptomycetes, one of actinomycetes member, is well known producer of vast majority antibiotics, but only 1-3% have been discovered [5]. Thus, *Streptomyces* is still a potential source of natural product with anti-infective activity.

*Staphylococcus aureus* and *Escherichia coli* are two of the most common pathogenic bacteria that caused infection [6, 18, 19]. These bacteria have been identified to gain resistance against various antibiotics and have spread around the world, even in the countries that known to have low prevalence such as Norway, Denmark, and Finland [7,8]. Thus, there are urgency to find new antibiotics which had activity against these resistance bacteria.



*Streptomyces griseoviridis* K10 which had been isolated from kale plantation area in Sidoarjo were analyzed for its antimicrobial activity against several microorganisms such as extended-spectrum beta-lactamases (ESBL) *Escherichia coli*, Methicillin-resistant *Staphylococcus aureus* (MRSA), *Pseudomonas aeruginosa* ATCC 27853, *Escherichia coli* ATCC 25922, *S. aureus* ATCC 25923, and *Candida albicans*. These study also evaluated the growth curve of the bacteria.

## 2. Materials and Methods

### 2.1. Materials

Bacteria that had been used in these study were *Streptomyces griseoviridis* K10, ESBL *E.coli*, MRSA, *Pseudomonas aeruginosa* ATCC 27853, *E. coli* ATCC 25922, *S. aureus* ATCC 25923, and *Candida albicans*.

Materials that had been used in these study were International Streptomyces Project 4(ISP-4) media(Himedia), Nutrient agar (NA) media (Himedia), Sabouraud Dextrose Agar (SDA) (Himedia) and agar bacteriological (Himedia). All other materials were analytical grade.

### 2.2. Characterization of *S. griseoviridis* K10

The isolate were cultivated on ISP-4 medium and characterized by following the direction in *Bergey's Manual of Systematic Bacteriology* [9].The bacteria characteristics such as the color of aerial mycelium, substrate mycelium and pigmentation of the isolate were observed [10].The ability of the isolate in the utilization of various carbon sources were evaluated [11]. The isolate also observed for its ability to grow in different pH, salinity, and temperatures.

### 2.3. *S. griseoviridis* K10 fermentation

Single isolate of *S. griseoviridis* K10 were put into 25 mL ISP-4 broth medium and incubated in thermoshaker (Gerhardt ) with controlled condition,  $32\pm 2^{\circ}\text{C}$  and agitation of 150 rpm, for two days.  $10^6$ - $10^7$ cfu bacteria from the pre-culture inoculated into 150 mL ISP-4 broth medium and growth in the same fermentation condition [12]. Each day, every 24 hours, the culture were sampled and analyzed for its antimicrobial activity.

### 2.4. Determination of *S. griseoviridis* K10 growth curve

The growth curve of *S. griseoviridis* K10 were determined using dry weight cell method based on Moreira [13]. Briefly, 5 mL of cultured were sampled every 24 hours, centrifuged in 10.000 rpm, and the pellet were dried in oven in controlled condition at  $105^{\circ}\text{C}$  until the weight of the cell constant. The determination of dry weight cell were done in five replication.

### 2.5. Antimicrobial screening

The pathogenic microorganisms were growth in NA media for bacteria and SDA for fungi. Bacteria, such as ESBL *E.coli*, MRSA, *Pseudomonas aeruginosa* ATCC 27853, *E. coli* ATCC 25922, and *S. aureus* ATCC 25923 were grown in NA slant media and incubated in thermally controlled incubator (Mettler) in  $32\pm 2^{\circ}\text{C}$  for 18 hours. The pathogenic fungi, *Candida albicans*, were grown in SDA media under the same condition. The pathogenic microorganisms then suspended in 10 mL NaCl 0.9% sterile solution. The transmittance of the suspension were measured using spectrophotometer (UV-Vis Spectrophotometer, Agilent 8453) in 580 nm and diluted until the transmittance reached 25% [14].

12 mL of NA media were used as base layer and 8 mL NA media were inoculated with 8  $\mu\text{L}$  pathogenic microorganism suspension for antimicrobial activity test.

The antimicrobial assay conducted using well diffusion method. 100  $\mu\text{L}$  of 3 days old *S. griseoviridis* K10 culture supernatant was put into the well of test media containing pathogenic microorganism that had been made using cork borer. The media then incubated in thermally controlled incubator (Mettler) in  $32\pm 2^{\circ}\text{C}$  for 18 hours. The antimicrobial assay done in five replicate.

### 2.6. Antimicrobial production curve

The antimicrobial production curve were determined using supernatant of *S. griseoviridis* K10 culture, which were grown in ISP-4 broth medium according to section 2.3 and sampled every 24 hours for four days. The antimicrobial assay were done using ESBL *E.coli* and MRSA as test organisms and the method was described previously in section 2.5.

### 3. Result and Discussion

The isolate, *S. griseoviridis* K10 (Figure 1), had yellowish pink aerial miselium, light orange yellow substrate miselium, and had melanoid pigment. It can utilize various carbon sources such as amylum, arabinose, dextrose, fructose, galactose, glucose, lactose, lactulose, sarose, and sucrose. The isolate also had ability to grow in temperature between 25 °C to 37 °C, pH range 5 to 9, and 2% salinity of the media. If the salinity was 5% or higher, the isolate were unable to grow.

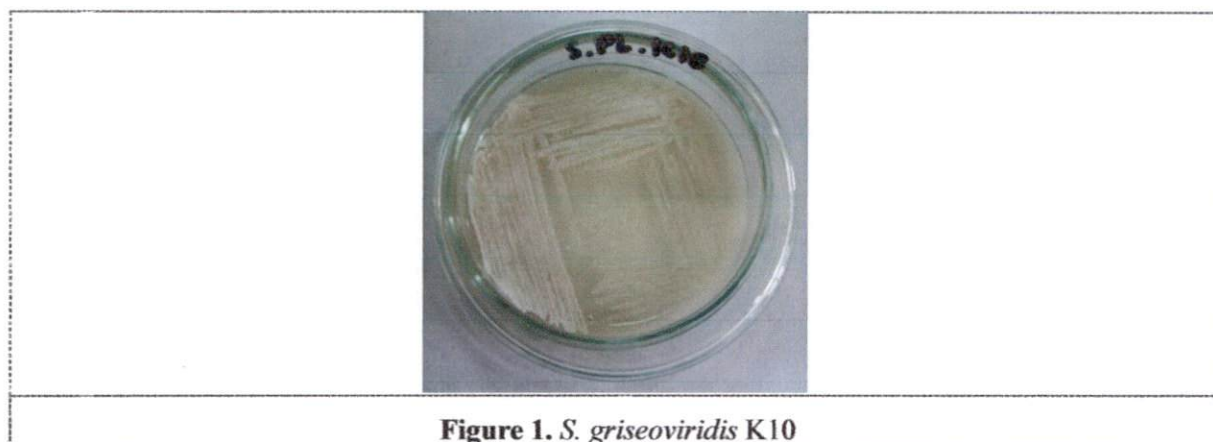


Figure 1. *S. griseoviridis* K10

These study showed that *S. griseoviridis* K10 had broad antimicrobials activities against ESBL *E. coli*, MRSA, *Pseudomonas aeruginosa* ATCC 27853, *E. coli* ATCC 25922, *S. aureus* ATCC 25923, and *Candida albicans* (Table 1).

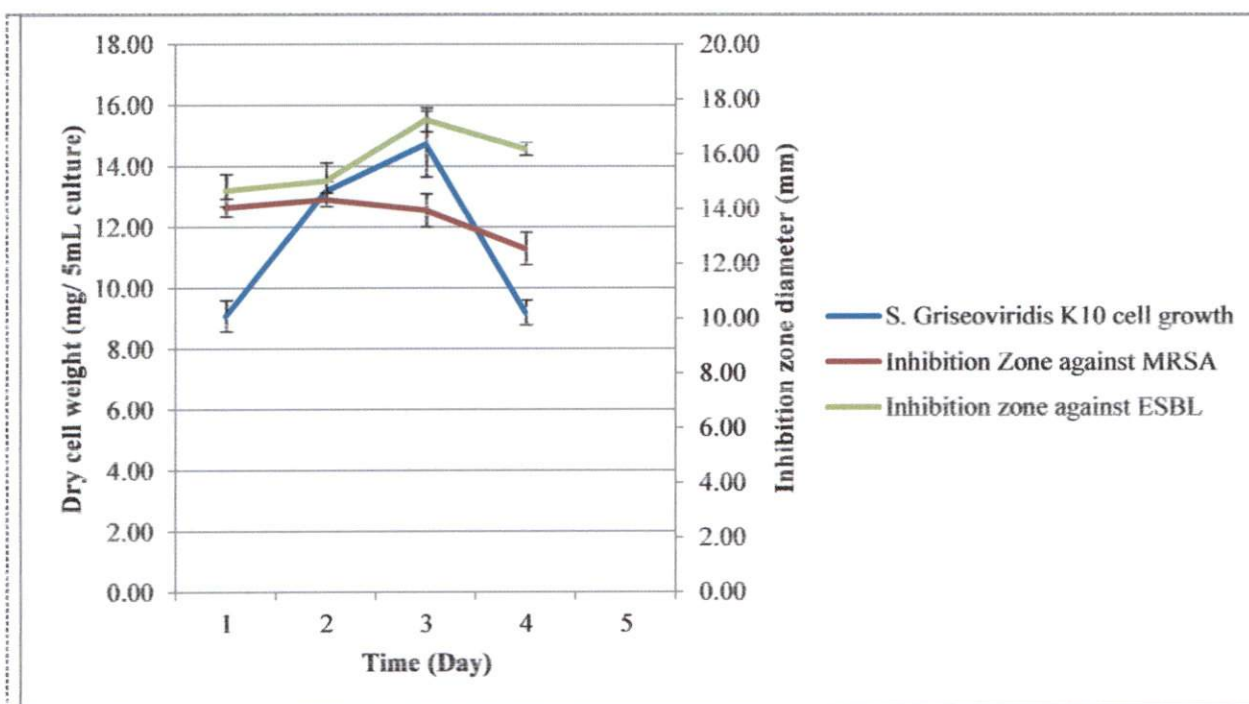
Table 1. Antimicrobial activities of *S. griseoviridis* K10 against pathogenic microorganisms

Test microorganism	Inhibition zone (mm)
ESBL <i>Escherichia coli</i>	17.25 ± 0.43
MRSA	13.95 ± 0.60
<i>Pseudomonas aeruginosa</i> ATCC 27853	20.96 ± 0.41
<i>Escherichia coli</i> ATCC 25922	20.64 ± 0.92
<i>S. aureus</i> ATCC 25923	21.73 ± 0.53
<i>Candida albicans</i>	16.90 ± 1.27

These finding correlate with the previous study that reported that *S. griseoviridis* had activity against gram positive bacteria, such as *S. aureus*, *Micrococcus luteus*, *Bacillus pumilus*, and *Bacillus subtilis*, and gram negative bacteria, such as *E. coli* and *P. aeruginosa* [15]. It was also reported that these species produce griseoviridin and viridogrisein that exert bactericidal activity which also effective against many multi-drug resistant microorganisms [16], such as vancomycin-resistant *Enterococcus faecium* [17]. Thus, it proved the potency of these isolate to produce antimicrobial substances with board spectrum activity.

The growth curve and antimicrobial production curve of *S. griseoviridis* K10 were showed in Figure 2. The *S. griseoviridis* K10 had the optimum activity against MRSA, which reach 14.34 ± 0.25 mm, in the second day of fermentation when the growth in the late log phase and ESBL *E. coli*, which reach 17.25 ± 0.43 mm, in the third days of fermentation when the growth in about the stationary

phase. The determination of the bacterial growth phase need to study futher with narrower sampling time, to predict the growth phase more accurately.



**Figure 2.** The growth curve and antimicrobial production curve of *Streptomyces griseoviridis* K10

The graph showed that *S. griseoviridis* had two different optimum antibiotic production day, for two different resistance bacteria, it is probably because it can produce several different chemical compound with antimicrobial activity.

#### 4. Conclusion

*S. griseoviridis* K10 had broad range antimicrobial activity against both pathogenic fungi and bacteria. It also had activity against resistance bacteria such as MRSA and ESBL *E. coli*. Thus, they are potential to be studied further.

#### 5. Acknowledgement

This research was partly funded by the DIPA BOPTN Universitas Airlangga, based on Decree of Rektor Universitas Airlangga No: 1349/UN3/2014, May 2014.

#### 6. References

- [1] Nahrgang S, Nolte E, and Rechel B 2018 *Antimicrobial resistance* (Health Policy Series, No. 51.) ed Rechel B, Maresso A, Sagan A, Hernández-Quevedo C, Richardson E, Jakubowski E, McKee M, and Nolte E (Copenhagen: European Observatory on Health Systems and Policies) chapter 4 pp 67-74
- [2] Aslam B, Wang W, Arshad M I, Khurshid M, Muzammil S, Rasool M H, Nisar M A, Alvi R F, Aslam M A, Qamar M U, Salamat M K F, and Baloch Z 2018 *Infect Drug Resist* **11** 1645–1658
- [3] da Cunha B R, Fonseca L P and Calado C R C C 2019 *Antibiotics* **8** 2
- [4] Singh R, Kumar M, Mittal A, and Mehta P K 2017 *Biotech* **7** 1
- [5] Clardy J, Fischbach M A and Walsh C T 2006 *Nature Biotechnology* **24** 12
- [6] Russo T A and Johnson J R 2003 *Microbes Infect.* **5** 5
- [7] Chambers H F and DeLeo F R 2009 *Nat Rev Microbiol* **7** 9

- [8] Burgees DS and Hall RG 2004 *Diagn Microb Infect Dis* **49**
- [9] Williams ST *et al* 1989 Genus Streptomyces *Bergey's Manual of Systematic Bacteriology*,ed Williams S T *et al* (Baltimore: Williams & Wilkins) vol 4 pp. 2452-2492
- [10] Shirling EB and Gottlieb D 1966 *Int J Syst Evol Microbiol* **16** 3
- [11] Pridham TG and Gottlieb D 1948 *J Bacteriol* **56** 1
- [12] Augustine SK, Bhavsar S P and Kapadnis BP 2005 *Indian J Med Res.* **121** 3
- [13] Moreira R A, Cavalcanti M T H, Duarte H S, Tambourgi E B, de Melo EH MSilva V L Porto AL F and de Lima F J L 2001 *Brazilian J of Microbial* **32** 10
- [14] Departemen Kesehatan Republik Indonesia 1995 *Farmakope Indonesia 4th Edition*, Jakarta, Departemen Kesehatan Republik Indonesia
- [15] Afifi M M, Atta H M, and Bayoumi R A 2014 *Res J Microbiol* **9** 1
- [16] Xie Y, Ma J, Qin X, Li Q and Ju J 2017 *Microb Cell Fact* **16** 177
- [17] Bonfiglio G and Furneri P M 2001 *Expert Opinion on Investigational Drugs* **10** 2
- [18] Poolman JT and Anderson AS 2018 *Expert Rev Vaccines* **1** 77
- [19] WHO 2014 Antimicrobial resistance: global report on surveillance (Geneva: WHO Press) pp. X-XI, 12-15, 19-21





## Journal of Oral Microbiology

Validate your research on etiological / aetiological agents behind oral infectious disease

[think.taylorandfrancis.com](http://think.taylorandfrancis.com)

[OPEN](#)

# IOP Conference Series: Earth and Environmental Science

**Country** [United Kingdom](#) - [IIII](#) [SJR Ranking of United Kingdom](#)

**Subject Area and Category** [Earth and Planetary Sciences](#)  
[Earth and Planetary Sciences \(miscellaneous\)](#)  
[Environmental Science](#)  
[Environmental Science \(miscellaneous\)](#)

**Publisher** [IOP Publishing Ltd.](#)

**Publication type** [Conferences and Proceedings](#)

**ISSN** [17551315](#), [17551307](#)

**Coverage** [2010-2020](#)

**Scope** The open access IOP Conference Series: Earth and Environmental Science (EES) provides a fast, versatile and cost-effective proceedings publication service.

[? Homepage](#)

[How to publish in this journal](#)

[Contact](#)

[Join the conversation about this journal](#)

# 18

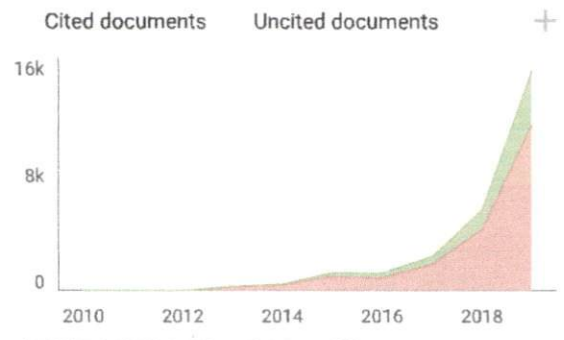
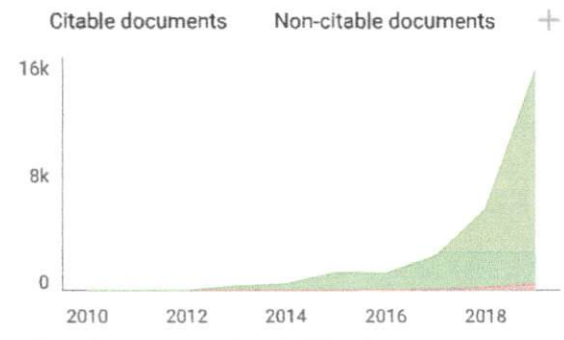
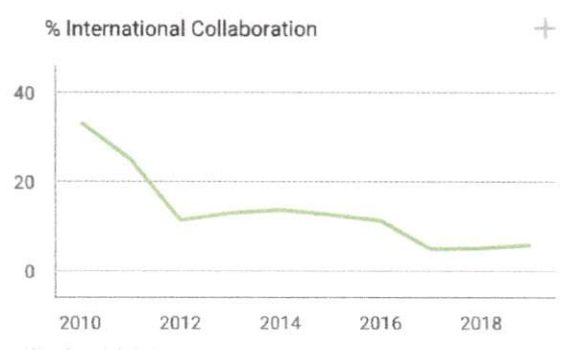
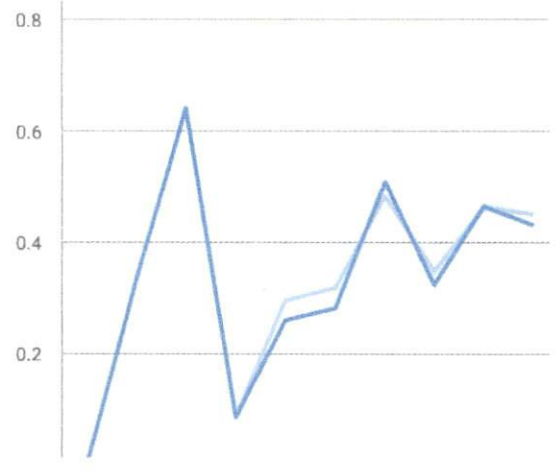
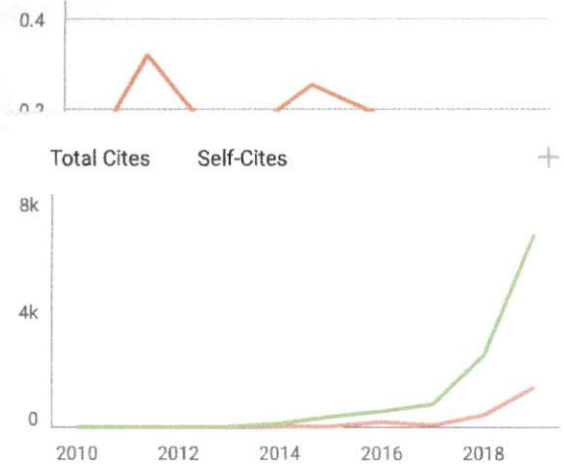
H Index

## Free English Writing Tool

Grammarly makes sure everything you type is effective and mistake-free. Try now

[DOWNLOAD](#)

[Grammarly](#)



**IOP Conference Series: Earth and Environmental...**

Not yet assigned quartile

**SJR 2019**  
0.18

powered by scimagojr.com

← Show this widget in your own website

Just copy the code below and paste within your html code:

```
<a href="https://www.scima
```

## Free English Writing Tool

Grammarly makes sure everything you type is effective and mistake-free. Try now

DOWNLOAD

Grammarly

N **Natt** 1 month ago

I would like to know the quartile of this journal. Why isn't it showing on the website?