

Home > About the Journal > Editorial Team

## Editorial Team

### Editor in Chief

Dr. Dewi Muliaty, Prodia Clinical Laboratory, Jakarta, Indonesia

### Managing Editor

Dr. Anna Meiliana, Universitas Padjadjaran, Bandung, Indonesia

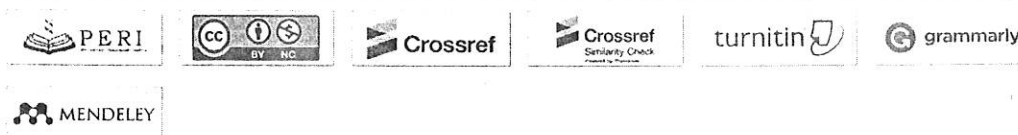
### Board of Editors

Dr. Andi Wijaya, Prodia Clinical Laboratory, Bandung, Indonesia  
 Prof. Dinath Ratnayake, The University of Western Ontario, Ontario, Canada  
 Prof. Geraldine Budomo Dayrit, Trinity University of Asia, Quezon, Philippines  
 Prof. Joseph Berkmans Lopez, MAHSA University College, Jenjarom, Malaysia  
 Prof. Koichi Nakayama, Saga University, Saga, Japan  
 Prof. Rajiv Timothy Erasmus, Stellenbosch University, Cape Town, South Africa  
 Dr. Rizky Abdulah, Universitas Padjadjaran, Bandung, Indonesia  
 Prof. Dr. Roberto Volpe, Italian National Research Council, Rome, Italy  
 Prof. Tar Choon Aw, ICON Central Laboratory, Singapore, Singapore  
 Dr. Trilis Yulianti, Prodia Clinical Laboratory, Jakarta, Indonesia

### Indexed by:



### The Prodia Education and Research Institute



## USER

Username

Password

Remember me

## Indexation Pages



Visit counter:

**00019380**

[View Website Statistics](#)

## JOURNAL CONTENT

Search

Search Scope

All

### Browse

- » [By Issue](#)
- » [By Author](#)
- » [By Title](#)

## NOTIFICATIONS

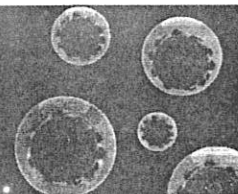
- » [View](#)
- » [Subscribe](#)

## INFORMATION

- » [For Readers](#)
- » [For Authors](#)
- » [For Librarians](#)

[Journal Help](#)

[OPEN JOURNAL SYSTEMS](#)



Home > Archives > Vol 12, No 2 (2020)

## Vol 12, No 2 (2020)

### Table of Contents

#### Review Article

Current Progress in Adipose Tissue Biology: Implications in Obesity and Its Comorbidities <i>Anna Meiliana, Nurrani Mustika Dewi, Andi Wijaya</i>	PDF 85-101
--	---------------

#### Research Article

The Usefulness of C-Reactive Protein, P. Calcitonin, and PELOD-2 Score as a Predictive Factor of Mortality in Sepsis <i>Munar Lubis, Aridamuriany Dwiputri Lubis, Badai Buana Nasution</i>	PDF 102-8
---	--------------

CAPN10 SNP-19 is Associated with Susceptibility of Type 2 Diabetes Mellitus: A Javanese Case-control Study <i>Yanuarita Tursinawati, Rifqi Fauzan Hakim, Afiana Rohmani, Arum Kartikadewi, Ferry Sandra</i>	PDF 109-14
--	---------------

Dedifferentiation of MCF-7 Breast Cancer Continuous Cell Line, Development of Breast Cancer Stem Cells (BCSCs) Enriched Culture and Biomarker Analysis <i>Ami Ashariati Prayogo, Andi Yasmin Wijaya, Winona May Hendrata, Steven Sheng Looi, Reny I'tishom, Lukman Hakim, Fedik Abdul Rantam, I Ketut Sudiana, Abdurachman Abdurachman</i>	PDF 115-23
---	---------------

Microbiological and Biochemical Contamination Analysis of Refilled Drinking-water in Abeli, Kendari, Southeast Sulawesi <i>Juminten Saimin, Hartati Hartati, Yenti Purnamasari, Sufiah Asri Mulyawati, Tien Tien, Pranita Ayitrina</i>	PDF 124-9
---	--------------

Administration of Vitamin D3 Improves Hemoglobin Level by Regulating TNF- $\alpha$ and IL-6 in DSS-induced Colitis Mice <i>Ervin Monica, Primayuni Dhia Hasanah, Arief Fadillah, Rara Aulia, Eko Sulistijono, Satrio Wibowo</i>	PDF 130-5
--	--------------

Comparison of Syphilis Rapid Diagnostic Test to Rapid Plasma Reagin, Treponema pallidum Haemagglutination Assay and Fluorescent Treponemal Antibody-Absorption for Syphilis and Yaws Diagnostics <i>Astuti Giantini, Dewi Wulandari, Siskawati Suparmin</i>	PDF 136-42
--	---------------

Simvastatin Improves Renal Function and Glomerulosclerosis in Ischemic-reperfusion Injury <i>Putu Nita Cahyawati, Desak Putu Oki Lestari, Ayu Savitri Siskayani, I Made Toya Ariawan</i>	PDF 143-8
---	--------------

Low Level of Vitamin D is Correlated with High C-Reactive Protein (CRP) and Disease Activity in Indonesian Juvenile Idiopathic Arthritis (JIA) Patients <i>Desy Wulandari, Wisnu Barlianto, Tita Luthfia Sari</i>	PDF 149-56
--	---------------

Circulating Plasma miRNA-21 as a Superior Biomarker Compared to CA 15-3: Assessment in Healthy Age Matched Subjects and Different Stage of Breast Cancer Patients <i>Merlyna Savitri, Ugroseno Yudho Bintoro, Made Putra Sedana, Muhammad Noor Muhammad, Pradana Zaky Romadhon, Putu Niken Ayu Amrita, Andi Yasmin Wijaya, Winona May Hendrata, Ami Ashariati Prayogo</i>	PDF 157-64
--	---------------

Modulating Effect of Vitamin D on iNOS, PCNA and $\alpha$ -SMA Expression Against Diclofenac Sodium Induced Gastric Injury in Rats <i>Sahar Youssef</i>	PDF 165-76
--	---------------

MTHFR C677T and TS 5'-UTR 3R/3R Gene Polymorphism in Methotrexate-Resistant Childhood Acute Lymphoblastic Leukemia <i>I Dewa Gede Ugrasena, Harianto Notopuro, Subijanto Marto Sudarmo, Ketut Sudiana, Djajadiman Gatot, Ponpon Idjradinata</i>	PDF 177-82
--	---------------

Association of CCL7 Promoter Polymorphism with Responsiveness to Allergen in Cynomolgus Macaque Model of Asthma <i>Sela Septima Mariya, Fitriya Nur Annisa Dewi, Eric Hayes, Villiandra Villiandra, Yasmina Arditi Pramastri, Diah Iskandriati, Uus Saepuloh, Joko Pamungkas, I Nengah Budiarsa, Dondin Sajuthi</i>	PDF 183-8
--	--------------

#### USER

Username  
Password  
 Remember me  
[Login](#)

#### Indexation Pages



Visit counter:  
**00019375**  
[View Website Statistics](#)

#### JOURNAL CONTENT

[Search](#)

Search Scope

All

[Search](#)

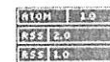
Browse

- » By Issue
- » By Author
- » By Title

#### NOTIFICATIONS

- » View
- » Subscribe

#### CURRENT ISSUE



#### INFORMATION

- » For Readers
- » For Authors
- » For Librarians

[Journal Help](#)

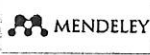
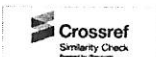
[OPEN JOURNAL SYSTEMS](#)

Indexed by:





The Prodia Education and Research Institute



## RESEARCH ARTICLE

**Dedifferentiation of MCF-7 Breast Cancer Continuous Cell Line,  
Development of Breast Cancer Stem Cells (BCSCs)  
Enriched Culture and Biomarker Analysis**Ami Ashariati Prayogo<sup>1,2,\*</sup>, Andi Yasmin Wijaya<sup>2,3</sup>, Winona May Hendrata<sup>2,3</sup>,  
Steven Sheng Looi<sup>4</sup>, Reny I'tishom<sup>5</sup>, Lukman Hakim<sup>2,6</sup>, Fedik Abdul Rantam<sup>3</sup>,  
Ketut Sudiana<sup>7</sup>, Abdurachman<sup>8</sup><sup>1</sup>Hematology-Medical Oncology Division, Department of Internal Medicine, Dr. Soetomo Teaching Hospital, Jl. Mayjen Prof. Dr. Moestopo No.6-8, Surabaya, Indonesia<sup>2</sup>Faculty of Medicine, Universitas Airlangga, Jl. Mayjen Prof. Dr. Moestopo No.47, Surabaya, Indonesia<sup>3</sup>Stem Cell Research and Development Center, Universitas Airlangga, Jl. Mayjen Prof. Dr. Moestopo No.47, Surabaya, Indonesia<sup>4</sup>School of Medicine, National University of Ireland Galway, University Road, Galway, Ireland<sup>5</sup>Department of Biomedicine, Faculty of Medicine, Universitas Airlangga, Jl. Mayjen Prof. Dr. Moestopo No.47, Surabaya, Indonesia<sup>6</sup>Urology-Oncology Division, Department of Urology, Dr. Soetomo Teaching Hospital, Jl. Mayjen Prof. Dr. Moestopo No.6-8, Surabaya, Indonesia<sup>7</sup>Department of Pathological Anatomy, Faculty of Medicine, Universitas Airlangga, Jl. Mayjen Prof. Dr. Moestopo No.47, Surabaya, Indonesia<sup>8</sup>Department of Anatomy and Histology, Faculty of Medicine, Universitas Airlangga, Jl. Mayjen Prof. Dr. Moestopo No.47, Surabaya, Indonesia

\*Corresponding author. E-mail: amiashariati@yahoo.com

Received date: Sep 5, 2019; Revised date: Mar 10, 2020; Accepted date: Mar 11, 2020

**Abstract**

**BACKGROUND:** Cancer stem cells (CSCs) eradication might serve as a robust approach for cancer eradication. MCF-7 as breast cancer continuous cell line is known to contain breast CSCs (BCSCs) for its capability to maintain its original tumor population. CSCs enriched culture is a fundamental tool for CSCs targeted therapy development. Effective and unsophisticated CSCs dedifferentiation protocol for producing CSCs enriched culture is needed.

**METHODS:** MCF-7 cells were cultured initially in Dulbecco's Modified Eagle Medium (DMEM) low glucose medium then changed to DMEM:F12. Serum starvation was performed during each medium refreshment gradually with fetal bovine serum (FBS) concentration of 10%, 5%, 2.5% until reaching 1% FBS concentration. Stable MCF-7 culture was then adapted to serum free culture system, containing DMEM:F12, epidermal growth factor (EGF), basic fibroblast growth factor (bFGF), and B27 supplement as dedifferentiation protocol for 18 days. Cluster of differentiation (CD)44 and CD24 double

staining immunocytochemistry was performed to evaluate cell stemness.

**RESULTS:** The population of cells expressing BCSCs markers (CD44<sup>+</sup>/CD24<sup>low</sup>) in non-adherent single cells subpopulation was significantly increased after the dedifferentiation procedure (70.39%) compared to control groups (0.71%) ( $p < 0.05$ ). In contrast, the expression of BCSCs marker in adherent single cells subpopulation and for both adherent and non-adherent mammosphere the BCSCs markers showed a stable expression.

**CONCLUSION:** BCSCs enrichment of breast cancer cell cultures from MCF-7 breast cancer cell line can be performed. Breast cancer cell plasticity is observed during the dedifferentiation protocol. Development of dedifferentiation inducing protocols can serve as an important foundation for breast cancer therapy development through BCSCs elimination.

**KEYWORDS:** breast neoplasms, cell line, dedifferentiation, immunohistochemistry, neoplastic stem cells

*Indones Biomed J. 2020; 12(2): 115-23*



## Introduction

Breast cancer is still the highest incident of malignancy among female which encompasses 24.2% of all female cancer and is responsible for 15% of mortality rate worldwide.(1) The world burden of cancer is also estimated to increase annually.(2) Breast cancer therapeutic strategy such as surgery, chemotherapy, and radiotherapy are well known for their curative ability, but the risk of relapse still exists.(3) Current cancer therapy mainly focuses on achieving remission status, however cancer could covertly progress, resulting in relapse.(4) Relapsed cancers often progress rapidly and have a worse prognosis.(5) Recent findings suggest that cancer stem cells (CSCs) play an important role in cancer relapse.(6)

CSCs is a distinct tumor cell type which exhibit stem cells-like phenotype.(7) CSCs possess the ability to self-renew and differentiate, leading to the formation of a heterogeneous cancer cell population.(8) CSCs are also resistant to chemotherapy and radiotherapy, resembling normal stem cells.(9) Targeting CSCs could potentially end the prolonged war against cancer.(10) CSCs are known to exist in both solid and non-solid cancers, it was first identified in acute myeloid leukemia (AML) (11) and then in solid tumor (12). The most reliable method of identifying CSCs are by assessing their tumorigenic properties through inoculation into immunocompromised animals, yet the usage of animal models have several disadvantages.(13) Therefore studies on identification of CSCs biomolecular markers were conducted, which eventually yielded a particular marker expressed by CSCs.(14) CSCs marker differ in each cancer source, cluster of differentiation (CD)44, CD24, and aldehyde dehydrogenase 1 (ALDH1) are expressed in breast cancers, whereas CD34 and CD38 are expressed in AML.(11,12,15) Understanding the biology of CSCs is important for developing an eradication strategy. In recent developments, CSCs studies have shown that asymmetric mitosis and cell dedifferentiation have a pivotal role in maintaining the pool of CSCs and cancer hierarchical population composition.

The concept of dedifferentiation is the ability to reverse the cellular clock.(16) This concept was proven by the production of induced pluripotent stem cells (iPSCs). iPSCs are differentiated cells which were reprogrammed by induction with several growth factors (Oct4, Sox2, Klf4, and c-Myc).(17) In this study, terminally differentiated fibroblasts were able to revert back to their pluripotent state, an ability originally only possessed by embryonic

stem cells (ESC).(18) Pluripotency of both iPSCs and ESC grant these cells the capability to differentiate into any type of cell which construct the body.(19) Pluripotent cells will undergo the differentiation process and transform into specific stem cells with less differentiation capability or multipotent stem cells (MSC).(20) MSC could differentiate into specific ectoderm, mesoderm, or endoderm cell types. (20) Oligopotent stem cells from MSC lineage have more limited differentiation potential and eventually produce specific mature unipotent stem cells which only have the ability to produce specific differentiated cells.(13) For instance, neural progenitor cells only have the ability to produce neuronal cells and are unable to produce cells of a blood cell lineage.(20) Terminally differentiated cells then undergo the processes of a normal cell and will eventually suffer from cell aging and cell death.

The stem cell population pool is maintained by asymmetric mitosis, which differs from regular mitosis because it produces two non-identical daughter cells, stem cells with original stemness ability (self-renewing stem cells) and stem cells with limited differentiation ability.(21) Asymmetric mitosis, differentiation, and dedifferentiation mechanism also present in CSCs.(22).

Established continuous cell lines are one example of a platform for *in vitro* studies involving cancer biology. Cancer cell line immortality and its ability to overcome the Hayflick limit (23), which limits cell division ability are consistent with the concept of CSCs (7), based on this fact it is concluded that CSCs are present among the cancer cell population. One of the breast cancer cell line is MCF-7, which originated from luminal-A breast cancer. (24) Dedifferentiation of cancer cell lines by growth factors administration in growth factors supplemented serum free condition may produce CSC-enriched cultures that will serve as a basis for understanding CSC biology and the development of CSC targeted therapy.

## Methods

This study had been approved by the Health Research Ethic Committee of Faculty of Medicine, Universitas Airlangga, Surabaya (Ethical Clearance No. 48/EC/KEPK/FKUA/2018).

### Cell Culture

MCF-7 (ATCC) human breast cancer continuous cell lines were obtained from the Cancer Chemopreventive Research Center, Universitas Gadjah Mada Yogyakarta, Indonesia.

MCF-7 cells were maintained in Dulbecco's Modified Eagle Medium (DMEM) low glucose medium (Gibco, New York, USA) with 10% fetal bovine serum (FBS) (Gibco) at 37°C, in a 5% CO<sub>2</sub> saturated humidified cell culture incubator.

#### Serum Starvation Procedure

Confluent MCF-7 cells were passaged and the initial medium was replaced with DMEM:F12 (Gibco) with 10% FBS. Confluent cultures were passaged and prepared to undergo serum starvation. Serum starvation was performed by refreshing the culture medium every three days, with serum concentration of 10%, 5%, 2.5%, and 1% before underwent dedifferentiation process with dedifferentiation medium. MCF-7 serum starved cells were cultured until up to 80% confluence and cultured into two 24-well culture plate with sterile coverslips. The cells were divided into 7 groups, which consist of 1 control group and 6 groups for the harvesting in the 3<sup>th</sup>, 6<sup>th</sup>, 9<sup>th</sup>, 12<sup>th</sup>, 15<sup>th</sup>, and 18<sup>th</sup> day as a treatment group. Each group was quadruplicated (n=4).

#### BCSCs Dedifferentiation Process

Treatment group which previously cultured on DMEM:F12 with 1% FBS then underwent medium change to dedifferentiation serum free medium, which composed of serum free DMEM:F12, human epidermal growth factors (EGF) (Biolegend, San Diego, California, USA), human basic fibroblast growth factor (bFGF) (Biolegend), and B27 supplemented medium (Gibco).<sup>(25)</sup> The dedifferentiation process was carried out for 18 days, with dedifferentiation medium being changed every 3 days. During medium refreshment, morphological observations were done using an inverted microscope (Olympus, Tokyo, Japan). Due to the emergence of adherent and non-adherent cells population, the methods of cells retrieved were different. Adherent cells were directly harvested from the coverslip and fixated with 10% neutral buffer formalin (Merck, Kenilworth, New Jersey, USA). Non-adherent cells were collected from the culture medium, centrifuged fixated with 10% neutral buffer formalin (Merck), recentrifuged and retrieved from the pellet. Cells were collected and fixated for the control group on the 0<sup>th</sup> days and on the 3<sup>th</sup>, 6<sup>th</sup>, 9<sup>th</sup>, 12<sup>th</sup>, 15<sup>th</sup>, and 18<sup>th</sup> day for the treatment group (n=4).

#### Breast Cancer Stem Cell Marker Detection

Adherent cells were prepared by sticking coverslips with its adherent cells on glass slides. Non-adherent cells, which originated from centrifuged medium pellets were fixated and smeared on poly-L-lysine coated glass slides (Muto Pure Chemicals, Tokyo, Japan), and dried

in a biosafety cabinet overnight. The fixated cells then undergo cell permeabilization which was carried out by incubation with 0.02% IGEPAL CA-630 (Sigma-Aldrich, St. Louis, Missouri, USA) for 7 minutes before the immunocytochemistry staining procedure was performed. (26) CD44 and CD24 double stain immunocytochemistry were performed using anti-human CD44 monoclonal antibody (ABCAM, Cambridge, UK), anti-human CD24 monoclonal antibody (ABCAM), and Lab Vision™ MultiVision Polymer Detection System double staining kit (ThermoFisher Scientific, Waltham, Massachusetts, USA).

Double stain immunocytochemistry staining was performed according to the kit manufacturer's protocol. After permeabilization protocols the blocking process was carried out. Blocking solution, which was Ultra V Block and Lab Vision™ Hydrogen Peroxidase Block which included in Lab Vision™ MultiVision Polymer Detection System kit by incubation for 5 minutes at 37°C temperature (ThermoFisher Scientific). Solely administration of MultiVision anti-rabbit/AP + anti-mouse/HRP polymer (cocktail) without primary antibody were used as control. LVRed and LVBlue Chromogen were utilized to visualized immunostaining for 10 minutes. Weak counterstain with Harris haematoxylin (Merck) was used to stain cell nuclei by incubating for 10 seconds. Immunocytochemistry stained cells were then observed under a Leica DM750 light microscope (Leica, Wetzlar, Germany).

#### Immunocytochemistry Interpretation

Expression of CD24 on the cells is represented by the red-brown colour of the cells, and blue colour indicates the expression of CD44 marker. The cells were grouped into two groups of observation: mammosphere and single cell population. Based on CD44/CD24 expression, the cells were divided into 5 groups (CD44<sup>+</sup>/CD24<sup>-</sup>, CD44<sup>+</sup>/CD24<sup>low</sup>, CD44<sup>+</sup>/CD24<sup>medium</sup>, CD44<sup>+</sup>/CD24<sup>high</sup>, and CD44<sup>-</sup>/CD24<sup>-</sup>). BCSCs quantification and the measurement of population percentage were utilized to evaluate the degree of dedifferentiation and the distribution of cell phenotype based on the BCSCs marker expression.<sup>(27,28)</sup> Divided observation of single cells and mammosphere population were done for both adherent and non-adherent populations by two independent pathologist (Figure 1, Figure 2).

#### Statistical Analysis

Kruskall-Wallis's analysis with SPSS ver 24 (IBM Cooperation, New York, USA) was performed to evaluate BCSCs marker expression difference for adherent and non-adherent cells in single cell and mammosphere populations.

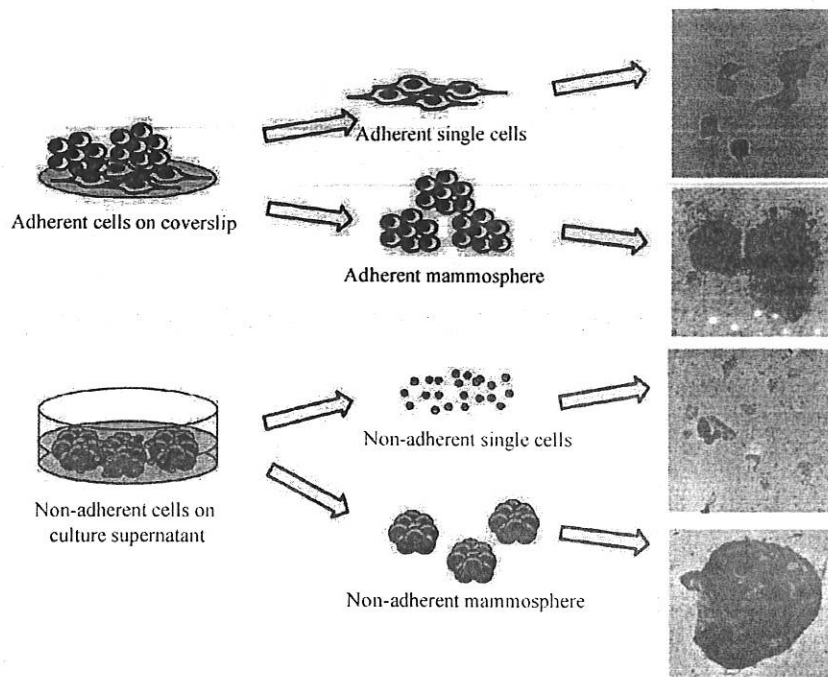


Figure 1. Workflow of molecular marker expression interpretation.

## Results

### Morphological Change

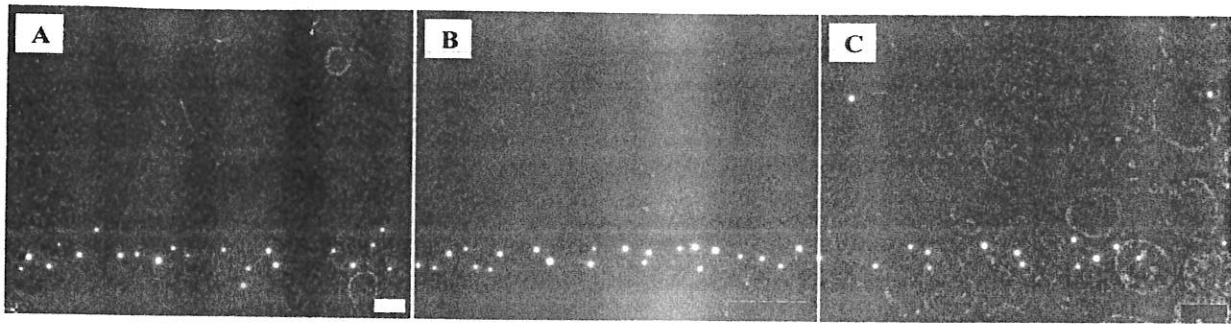
Epithelial-mesenchymal transition (EMT) was the change of cell morphology and characteristics that occurs in epithelial cells. This change could cause epithelial cell phenotypes to change into mesenchymal cells, while the reverse mechanism, which changed mesenchymal cell phenotypes into epithelial phenotypes was called mesenchymal to epithelial transition (MET). Epithelial cells were usually present in glands and the surface of organs, which tend to be stationary and have a limited ability of migration. On the other hand, mesenchymal cell types were mainly present in the stroma of organs with good mobility and dynamic

adaptability. In stem cell biology, the process of EMT explains the activation and homing ability of stem cells. EMT was a dynamic process, which occurred ubiquitously in the organism, and a miss in EMT might result in grave consequences.

The initial MCF-7 cell line morphology was squamous cells with hexagonal-shaped membranes could be observed in the control groups both in before or after the serum starvation procedure (Figure 3). On the 3<sup>rd</sup> day of dedifferentiation protocol, MCF-7 morphology gradually changed from squamous into a round-shaped form, aggregated and began to form anchored cauliflower-like structures (Figure 3). Dedifferentiation of MCF-7 yielded two different populations on the 6<sup>th</sup> day: adherent and non-adherent populations. Mammosphere was the formation of



Figure 2. Grouping of cells phenotype based on marker expression. A: CD24<sup>low</sup>/CD44<sup>+</sup> (white arrow), CD24<sup>medium</sup>/CD44<sup>+</sup> (red arrow) and CD24<sup>high</sup>/CD44<sup>+</sup> (black arrow) cells on the 18<sup>th</sup> days of dedifferentiation; B: Haematoxylin-Eosin staining on the 18<sup>th</sup> days of dedifferentiation; C: CD24<sup>+</sup>/CD44<sup>+</sup> cells (green arrow) on the 12<sup>th</sup> days of dedifferentiation. Black bar: 10  $\mu$ m.

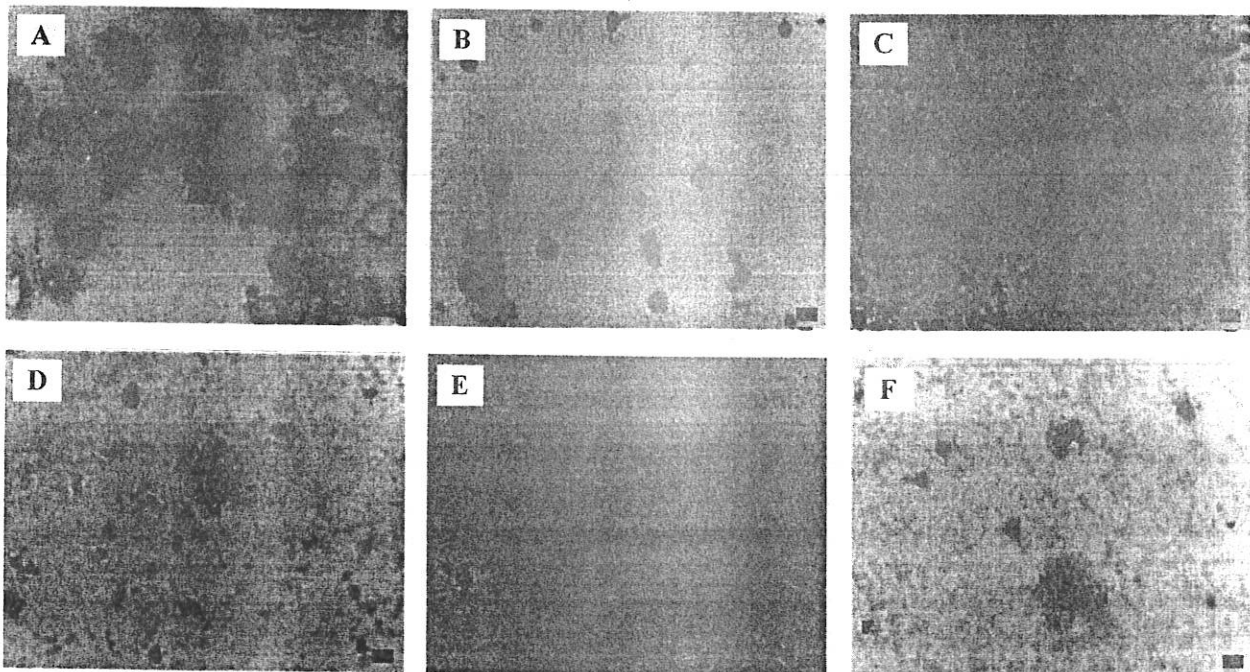


**Figure 3. Squamous cell appearance, cauliflower-like morphological change, and non-adherent cells formation.** A: Adherent squamous cells with epithelial like phenotype MCF-7 morphology on control group (D-0); B: Adherent cauliflower-like structure. lost of adherence. EMT-like process on the 3<sup>rd</sup> days of dedifferentiation; C: Mammospheres formation on the 18<sup>th</sup> days of dedifferentiation. White bar: 10  $\mu$ m; Black bar: 100  $\mu$ m.

spherical structure consisted of breast cells which could be observed beginning in the 3<sup>rd</sup> day. Detached cells and mammosphere from the cauliflower-like structure gave rise to the non-adherent population (Figure 1, Figure 2, Figure 3). Mammosphere growth and multiplication occurred on the 6<sup>th</sup>, 9<sup>th</sup>, 12<sup>th</sup>, 15<sup>th</sup>, and 18<sup>th</sup> day of the dedifferentiation protocol.

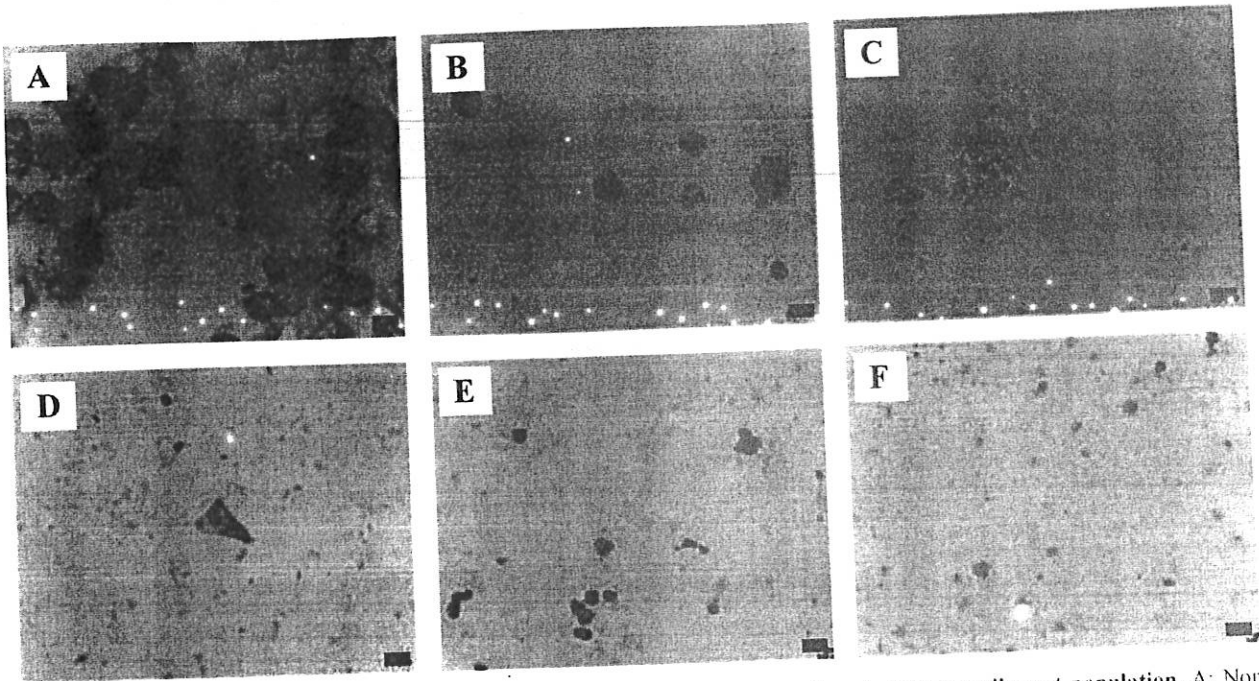
Based on the MCF-7 morphological change during the dedifferentiation protocol, EMT like process was observed, especially in the first three days of the protocol. Initial

MCF-7 squamous morphology, which was closely related to epithelial phenotype gradually began to change into a rounder cell shape and lost its original epithelial appearance (Figure 3, with serial labeling in Figure 4 and Figure 5). This process might be closely related to the mechanism of metastasis, making it a vital process in cancer biology. This finding suggests that this dedifferentiation protocol might be utilized to obtain a closer look into the EMT process by performing a specific EMT related marker and assays.



**Figure 4. Serial staining of cells during culture in dedifferentiation inducing medium in the adherent population.** A: Adherent cells on the 3<sup>rd</sup> days observation; B: Adherent cells on the 6<sup>th</sup> days observation; C: Adherent cells on the 9<sup>th</sup> days observation; D: Adherent cells on the 12<sup>th</sup> days observation; E: Adherent cells on the 15<sup>th</sup> days observation; F: Adherent cells on the 18<sup>th</sup> days observation. CD24/CD44 double staining. Red bar: 10  $\mu$ m.





**Figure 5. Serial staining of cells during culture in dedifferentiation inducing medium in the non-adherent population.** A: Non-adherent cells on the 3<sup>rd</sup> days observation; B: Non-adherent cells on the 6<sup>th</sup> days observation; C: Non-adherent cells on the 9<sup>th</sup> days observation; D: Non-adherent cells on the 12<sup>th</sup> days observation; E: Non-adherent cells on the 15<sup>th</sup> days observation; F: Non-adherent cells on the 18<sup>th</sup> days observation. CD24/CD44 double staining. Red bar: 10  $\mu$ m.

#### CD44 and CD24 Expression Profile Difference in The Single Cell Population

CD24 marker was indicated by the appearance of red-brownish colour, while CD44 marker was marked by blue colour. Based on the intensity of colour, intensity of CD24 expression is graded as high, medium or low expressing cells, while a faint colour was only able to distinguish between expressing and non-expressing cells.

Disseminated single cells of the enriched MCF-7 CSCs culture could be detected in both the adherent and non-adherent cells population beginning from the 6<sup>th</sup> day of dedifferentiation protocol (Table 1, Table 2) The initial population of MCF-7 breast cancer cell lines exhibited an immense surface expression of CD24, yet CD44 expression was barely detectable. High levels of CD24 expression and limited expression of CD44 in the initial MCF-7 population suggested that it contained breast cancer cells with a high degree of differentiation. The initial MCF-7 monolayer culture was dominated with CD24<sup>+</sup>/CD44<sup>-</sup> cells, which showed a high degree of breast cancer differentiation. Detection of CD44 expression increased along the course of dedifferentiation protocols mainly in the non-adherent subpopulation (Table 2). Observation of population cell dynamics in the adherent population began from the 3<sup>rd</sup> day, with a notable gradual growth of the CD24<sup>medium</sup>/

CD44<sup>+</sup> population and decreasing levels of CD24<sup>low</sup>/CD44<sup>+</sup> population. The trend of CD24<sup>high</sup>/CD44<sup>+</sup> cell stabilized during the dedifferentiation protocol and peaked on the 12<sup>th</sup> day. This results suggest that the subpopulation of non-adherent single cells was dominated by the CD24<sup>low</sup>/CD44<sup>-</sup> at the end of culture in dedifferentiation medium, yet the adherent single cells exhibit a more maturation phenotype.

#### Difference in CD44 and CD24 Expression Profiles in The Mammosphere Population

MCF-7 mammospheres from the CSC-enriched culture were observed in the form of non-adherent and adherent population. Non-adherent mammosphere were observed from the 6<sup>th</sup> day, and on the 12<sup>th</sup> day the adherent mammosphere was identified (Table 2, Figure 4, Figure 5).

CD24 expression as a marker of breast cancer differentiation was prominently observed in the adherent mammosphere and CD44 expression as a breast cancer stemness marker was more prominent in the non-adherent mammosphere. However, compared to the non-adherent single cell population, the CSCs markers were less prominent in the mammosphere population (Table 1, Table 2).

From the 6<sup>th</sup> day, CD24<sup>medium</sup>/CD44<sup>+</sup> cells dominated the non-adherent mammosphere. Conversely in the adherent mammosphere population, the differentiate

Table 1. Composition of cells phenotype in the single cell population.

Group	CD24 <sup>+</sup> /CD44 <sup>-</sup>		CD24 <sup>High</sup> /CD44 <sup>+</sup>		CD24 <sup>Med</sup> /CD44 <sup>+</sup>		CD24 <sup>Low</sup> /CD44 <sup>+</sup>		CD24 <sup>+</sup> /CD44 <sup>+</sup>	
	Adherent	Non-Adherent	Adherent	Non-Adherent	Adherent	Non-Adherent	Adherent	Non-Adherent	Adherent	Non-Adherent
D-0	85.07%	Not formed	9.24%	Not formed	4.98%	Not formed	0.71%	Not formed	0.00%	Not formed
D-3	70.74%	Not formed	18.49%	Not formed	9.32%	Not formed	1.45%	Not formed	0.00%	Not formed
D-6	14.11%	5.07%	34.53%	14.49%	18.62%	66.30%	32.73%	14.13%	0.00%	0.00%
D-9	1.27%	1.42%	53.92%	15.01%	23.54%	47.26%	21.27%	36.31%	0.00%	0.00%
D-12	2.21%	0.57%	56.15%	12.63%	25.55%	44.76%	15.77%	40.17%	0.32%	0.00%
D-15	1.42%	0.00%	43.38%	3.63%	36.91%	25.73%	18.14%	70.64%	0.16%	0.00%
D-18	1.17%	0.00%	44.60%	14.81%	46.48%	14.32%	7.75%	70.36%	0.00%	0.49%

Table 2. Composition of cells phenotype in the mammosphere population.

Group	CD24 <sup>+</sup> /CD44 <sup>-</sup>		CD24 <sup>High</sup> /CD44 <sup>+</sup>		CD24 <sup>Med</sup> /CD44 <sup>+</sup>		CD24 <sup>Low</sup> /CD44 <sup>+</sup>		CD24 <sup>+</sup> /CD44 <sup>+</sup>	
	Adherent	Non-Adherent	Adherent	Non-Adherent	Adherent	Non-Adherent	Adherent	Non-Adherent	Adherent	Non-Adherent
D-0	Not formed	Not formed	Not formed	Not formed	Not formed	Not formed	Not formed	Not formed	Not formed	Not formed
D-3	Not formed	Not formed	Not formed	Not formed	Not formed	Not formed	Not formed	Not formed	Not formed	Not formed
D-6	Not formed	1.27%	Not formed	30.03%	Not formed	51.65%	Not formed	17.05%	Not formed	0.00%
D-9	18.42%	0.00%	36.84%	43.54%	44.74%	46.08%	0.00%	10.38%	0.00%	0.00%
D-12	0.00%	0.00%	62.00%	8.46%	37.78%	81.69%	0.22%	9.85%	0.00%	0.00%
D-15	0.45%	0.00%	46.28%	35.93%	47.86%	59.50%	5.42%	4.57%	0.00%	0.00%
D-18	0.00%	0.00%	60.93%	36.33%	36.82%	51.59%	2.25%	12.08%	0.00%	0.00%

CD24<sup>high</sup>/CD44<sup>+</sup> cells were dominating from the 12<sup>th</sup> day of the dedifferentiation protocol until the 18<sup>th</sup> day. The rising percentage of CD24<sup>low</sup>/CD44<sup>+</sup> cells, which occurred in the non-adherent mammosphere in line with the dedifferentiation protocols duration, was observed in the non-adherent mammosphere populations (Table 2)

---

## Discussion

---

### Dedifferentiation Signaling

Cancer dedifferentiation is tightly linked with inflammation, hypoxia, and response to cellular damage.(29) These pathways of cellular dedifferentiation eventually cross in hypoxia-inducible factors (HIF)-1 $\alpha$  and HIF-2 $\alpha$  signaling. HIF-1 $\alpha$  and HIF-2 $\alpha$  are peculiar protein which are usually degraded in normoxic conditions, but maintained in hypoxic conditions.(30) HIF-1 $\alpha$  and HIF-2 $\alpha$  translocate into the nucleus, binding with HIF-1 $\beta$  to form a protein complex which goes into DNA hypoxia response element (HRE) and triggers transcription of complex cellular signaling molecules of hypoxia response and cell dedifferentiation. (31,32)

EGF and bFGF which are present in the inflammation and cellular damage response could mimic hypoxic signaling conditions and arrest the HIF-1 $\alpha$  and HIF-2 $\alpha$  degradation process, which eventually triggers cellular dedifferentiation. (32–34) This method could possibly produce CSCs by dedifferentiating malignant cells. In the *in vitro* setting the supplementation of EGF and bFGF to the serum free medium could mimic this *in vivo* process and yield a CSC-enriched culture.

### Expression of BCSC Markers

BCSC marker detection using immunocytochemistry is one of the techniques able to detect the presence of CSCs in the heterogeneous cell line population. Expression of CD44 is thought to be a stemness marker whereas CD24 acts as a marker of differentiation in breast CSCs.(15) Utilization of simultaneous detection of CD24 and CD44 in double staining immunocytochemistry allows CD44<sup>+</sup>/CD24<sup>low</sup> cells which are thought to be BCSCs to be distinguished from the rest of the population. Elevated levels of CD44 expression and low CD24 expression could determine the success of dedifferentiation protocols (15), yet the dedifferentiation protocols reveal 4 distinct subpopulation of cells inside MCF-7 breast cancer cell line population. The 4 subgroups are distinguished based on cell adherence and

cell morphology as a single cell or mammosphere forming population. BCSC marker expression from the 4 subgroups varies from each other. but the main difference is that the adherent population tends to express higher amounts of differentiation markers than the non-adherent population. However, the mammosphere forming subpopulation showed domination of CD24<sup>medium</sup>/CD44<sup>+</sup> cells which have a moderate level of differentiation degree between the CSCs and differentiate cancer cells. These results suggest that the 4 distinct subpopulation of cancer cells identified in this study could be present in every cancer cell population, hinting that the theory of an existence of a lineage of cancer cell population from CSCs could be proven. Nevertheless, future studies should utilize an *in vivo* assay for assessing cell tumorigenicity to determine how these subpopulations differ in their ability to cause cancer. Confirmation of a cell's ability to dedifferentiate and give rise to an original MCF-7 cells population should also be performed. Isolation of each respective subpopulation and culturing them in serum supplemented medium could be performed to assess the differentiation capability of each subpopulation. Further confirmation by other quantitative techniques such as flowcytometry is also encouraged.

### Clinical Implication

Development of BCSC-enriched cultures from breast cancer continuous cell lines could serve as the platform for the development of CSC targeted therapy and provide a deeper understanding of CSC biology.(7) In the clinical setting, development of CSC targeted therapy, especially with regards to breast cancer treatment could hopefully plummet the number of relapsing cancer cases and provide a novel approach to cancer therapy. In the future, CSC targeted therapy could replace the use of costly and hazardous cytostatic agents in current chemotherapy regimens as well as decreasing the potential side effects of radiotherapy.

---

## Conclusion

---

Development of BCSC-enriched cultures from MCF-7 breast cancer continuous cell lines could be performed by utilizing serum-free medium supplemented by EGF, bFGF and B27 supplement medium. BCSCs-enrichment was completed by reprogramming breast cancer cell lines to undergo a dedifferentiation process through hypoxia response related pathways.

## References

- Bray F, Ferlay J, Soerjomataram I, Siegel RL, Torre LA, Jemal A. Global cancer statistics 2018: GLOBOCAN estimates of incidence and mortality worldwide for 36 cancers in 185 countries. *CA Cancer J Clin*. 2018; 68: 394–424.
- Prager GW, Braga S, Bystricky B, Qvortrup C, Criscitiello C, Esin E, *et al*. Global cancer control: Responding to the growing burden, rising costs and inequalities in access. *ESMO Open*. 2018; 3: e000285. doi: 10.1136/esmoopen-2017-000285.3.
- Gerber B, Freund M, Reimer T. Recurrent breast cancer: treatment strategies for maintaining and prolonging good quality of life. *Dtsch Arztebl Int*. 2010; 107: 85–91.
- Dragu DL, Necula LG, Bleotu C, Diaconu CC, Chivu-Economescu M. Therapies targeting cancer stem cells: Current trends and future challenges. *World J Stem Cells*. 2015; 7: 1185–201.
- Dales JP, Garcia S, Meunier-Carpentier S, Andrac-Meyer L, Haddad O, Lavaut MN, *et al*. Overexpression of hypoxia-inducible factor HIF-1 $\alpha$  predicts early relapse in breast cancer: Retrospective study in a series of 745 patients. *Int J Cancer*. 2005; 116: 734–9.
- Bomken S, Fišer K, Heidenreich O, Vormoor J. Understanding the cancer stem cell. *Br J Cancer*. 2010; 103: 439–45.
- Maugeri-Saccà M, Bartucci M, De Maria R. DNA damage repair pathways in cancer stem cells. *Mol Cancer Ther*. 2012; 11: 1627–36.
- Chen R, Nishimura MC, Bumbaca SM, Kharbanda S, Forrest WF, Kasman IM, *et al*. A hierarchy of self-renewing tumor-initiating cell types in glioblastoma. *Cancer Cell*. 2010; 17: 362–75.
- Abdullah LN, Chow EK-H. Mechanisms of chemoresistance in cancer stem cells. *Clin Transl Med*. 2013; 2 :3. doi: 10.1186/2001-1326-2-3.
- Lou H, Dean M. Targeted therapy for cancer stem cells: the patched pathway and ABC transporters. *Oncogene*. 2007; 26: 1357–60.
- Bonnet D, Dick JE. Human acute myeloid leukemia is organized as a hierarchy that originates from a primitive hematopoietic cell. *Nat Med*. 1997; 3: 730–7.
- Al-Hajj M, Wicha MS, Benito-Hernandez A, Morrison SJ, Clarke MF. Prospective identification of tumorigenic breast cancer cells. *Proc Natl Acad Sci USA*. 2003; 100: 3983–8.
- Hombach-Klonisch S, Panigrahi S, Rashedi I, Seifert A, Alberti E, Pocar P, *et al*. Adult stem cells and their trans-differentiation potential—perspectives and therapeutic applications. *J Mol Med*. 2008; 86: 1301–14.
- Schatton T, Frank NY, Frank MH. Identification and targeting of cancer stem cells. *BioEssays*. 2009; 31: 1038–49.
- Ricardo S, Vieira AF, Gerhard R, Leitao D, Pinto R, Cameselle-Teijeiro JF, *et al*. Breast cancer stem cell markers CD44, CD24 and ALDH1: expression distribution within intrinsic molecular subtype. *J Clin Pathol*. 2011; 64: 937–46.
- Poss KD. Advances in understanding tissue regenerative capacity and mechanisms in animals. *Nat Rev Gene*. 2010; 11: 710–22.
- Takahashi K, Yamanaka S. Induction of pluripotent stem cells from mouse embryonic and adult fibroblast cultures by defined factors. *Cell*. 2006; 126: 663–76.
- Yamanaka S. Patient-specific pluripotent stem cells become even more accessible. *Cell Stem Cell*. 2010; 7: 1–2. doi: 10.5772/13969
- Khavari DA, Sen GL, Rinn JL. DNA methylation and epigenetic control of cellular differentiation. *Cell Cycle*. 2010; 9: 3880–3.
- Bhartiya D, Boheler KR, Rameshwar P. Multipotent to pluripotent properties of adult stem cells. *Stem Cells Int*. 2013; 2013: 813780. doi: 10.1155/2013/813780.
- Gómez-López S, Lerner RG, Petritsch C. Asymmetric cell division of stem and progenitor cells during homeostasis and cancer. *Cell Mol Life Sci*. 2014; 71: 575–97.
- Santoro A, Vlachou T, Carminati M, Pelicci PG, Mapelli M. Molecular mechanisms of asymmetric divisions in mammary stem cells. *EMBO Rep*. 2016; 17: 1700–20.
- Hayflick L, Moorhead PS. The serial cultivation of human diploid cell strains. *Exp Cell Res*. 1961; 25: 585–621.
- Holliday DL, Speirs V. Choosing the right cell line for breast cancer research. *Breast Cancer Res*. 2011; 13: 215. doi: 10.1186/ber2889.
- Wang J, Liu X, Jiang Z, Li L, Cui Z, Gao Y, *et al*. A novel method to limit breast cancer stem cells in states of quiescence, proliferation or differentiation: Use of gel stress in combination with stem cell growth factors. *Oncol Lett*. 2016; 12: 1355–60.
- Pasternak T, Tietz O, Rapp K, Begheldo M, Nitschke R, Ruperti B, *et al*. Protocol: An improved and universal procedure for whole-mount immunolocalization in plants. *Plant Methods*. 2015; 11: 50. doi: 10.1186/s13007-015-0094-2
- Zhao J, Lin Z, Yao H, Wan Y. Analysis of the relationship between expressions of TF and MMP-9 and prognosis of breast cancer patients. *Chinese J Clin Oncol*. 2008; 5: 141–5.
- Hu W, Sevim-Nalkiran H, Zaman AM, Matsuda K, Khasraw M, Nowak AK, *et al*. Ibudilast sensitizes glioblastoma to temozolomide by targeting Macrophage Migration Inhibitory Factor (MIF). *Sci Rep*. 2019; 9: 2905. doi: 10.1038/s41598-019-39427-4
- Chen X, Liao R, Li D, Sun J. Induced cancer stem cells generated by radiochemotherapy and their therapeutic implications. *Oncotarget*. 2017; 8: 17301–12.
- Francis KR, Wei L. Human embryonic stem cell neural differentiation and enhanced cell survival promoted by hypoxic preconditioning. *Cell Death Dis*. 2010; 1: e22–11.
- Khong TL, Thairu N, Larsen H, Dawson PM, Kiriakidis S, Paleolog EM. Identification of the angiogenic gene signature induced by EGF and hypoxia in colorectal cancer. *BMC Cancer*. 2013; 13: 518. doi: 10.1186/1471-2407-13-518
- Calvani M, Rapisarda A, Uranchimeg B, Shoemaker RH, Melillo G. Hypoxic induction of an HIF-1 $\alpha$ -dependent bFGF autoocrine loop drives angiogenesis in human endothelial cells. *Blood*. 2006; 107: 2705–12.
- Shi YH, Wang YX, Bingle L, Gong LH, Heng WJ, Li Y, *et al*. In vitro study of HIF-1 activation and VEGF release by bFGF in the T47D breast cancer cell line under normoxic conditions. Involvement of PI-3K/Akt and MEK1/ERK pathways. *J Pathol*. 2005; 205: 530–6.
- Han ZB, Ren H, Zhao H, Chi Y, Chen K, Zhou B, *et al*. Hypoxia-inducible factor (HIF)-1 $\alpha$  directly enhances the transcriptional activity of stem cell factor (SCF) in response to hypoxia and epidermal growth factor (EGF). *Carcinogenesis*. 2008; 29: 1853–61.

# Source details

## Indonesian Biomedical Journal

Open Access ⓘ

Scopus coverage years: from 2017 to Present

Publisher: Prodia Education and Research Institute

SSN: 2085-3297 E-ISSN: 2355-9179

Subject area: [Medicine: Medicine \(miscellaneous\)](#)

[Biochemistry, Genetics and Molecular Biology: General Biochemistry, Genetics and Molecular Biology](#)

Source type: Journal

CiteScore 2020

0.6

SJR 2020

0.160

SNIP 2020

0.268

[View all documents >](#)

[Set document alert](#)

[Save to source list](#) [Source Homepage](#)

[CiteScore](#) [CiteScore rank & trend](#) [Scopus content coverage](#)

### Improved CiteScore methodology

CiteScore 2020 counts the citations received in 2017-2020 to articles, reviews, conference papers, book chapters and data papers published in 2017-2020, and divides this by the number of publications published in 2017-2020. [Learn more >](#)

### CiteScore 2020

0.6 =  $\frac{85 \text{ Citations 2017 - 2020}}{153 \text{ Documents 2017 - 2020}}$

Calculated on 05 May, 2021

### CiteScoreTracker 2021

0.6 =  $\frac{80 \text{ Citations to date}}{135 \text{ Documents to date}}$

Last updated on 04 June, 2021 • Updated monthly

### CiteScore rank 2020

Category	Rank	Percentile
Medicine		
— Medicine (miscellaneous)	#197/238	17th
Biochemistry, Genetics and Molecular Biology		
— General Biochemistry, Genetics and Molecular Biology	#175/204	14th

[View CiteScore methodology >](#) [CiteScore FAQ >](#) [Add CiteScore to your site &](#)

## About Scopus

[What is Scopus](#)  
[Content coverage](#)  
[Scopus blog](#)

## Language

[日本語に切り替える](#)  
[切换到简体中文](#)  
[切换到繁體中文](#)

## Customer Service

[Help](#)  
[Contact us](#)



R

Scimago Journal & Country Rank

Enter Journal Title, ISSN or Publisher Name

- Home
- Journal Rankings
- Country Rankings
- Viz Tools
- Help
- About Us

ⓘ ×

## Write With Confidence

Check your grammar, spelling, and punctuation instantly with Grammarly

Learn

Grammarly

## Indonesian Biomedical Journal

### COUNTRY

Indonesia

Universities and research institutions in Indonesia

### SUBJECT AREA AND CATEGORY

Biochemistry, Genetics and Molecular Biology  
 Biochemistry, Genetics and Molecular Biology (miscellaneous)  
 Medicine  
 Medicine (miscellaneous)

### PUBLISHER

Prodia Education and Research Institute

### H-INDEX

4

### PUBLICATION TYPE

Journals

### ISSN

20853297, 23559179

### COVERAGE

2017-2020

### INFORMATION

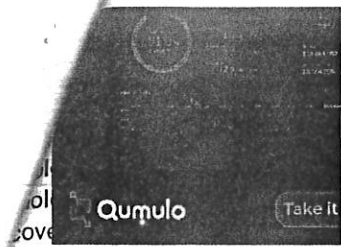
Homepage

How to publish in this journal

secretariat@inabj.org

Test Drive Qumulo Today

Take a guided journey through Qumulo



open access, peer-reviewed journal that encompasses all fundamental and es, emphasizing on providing the molecular studies of biomedical problems and omedical Journal is dedicated to publish original research and review articles 3. The editors will carefully select manuscript to present only the most recent findings in basic and clinical sciences. All professionals concerned with biomedical issues will find this journal a most valuable update to keep them abreast of the latest scientific development.

Join the conversation about this journal

## Scopus Indexed Journal

Fast Track Peer Reviewed Publication.

tojqi.net

OPEN

Quartiles

## Scopus Indexed Journal

Fast Track Peer Reviewed Publication.

tojqi.net

OPEN

### FIND SIMILAR JOURNALS ?

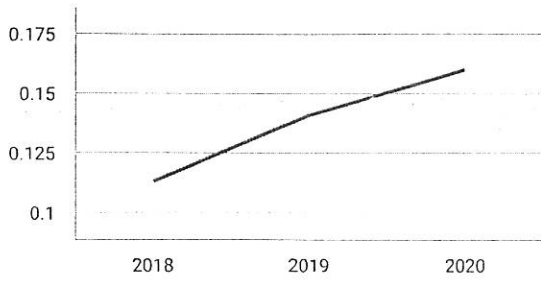
- |   |  |   |  |
|---|--|---|--|
| 1<br><b>Translational Research</b><br>USA | 2<br><b>Molecular Aspects of<br/>Medicine</b><br>GBR | 3<br><b>Frontiers in Bioscience -<br/>Landmark</b><br>USA | 4<br><b>Journal of B<br/>Research</b><br>CHN |
|---|--|---|--|

60% similarity

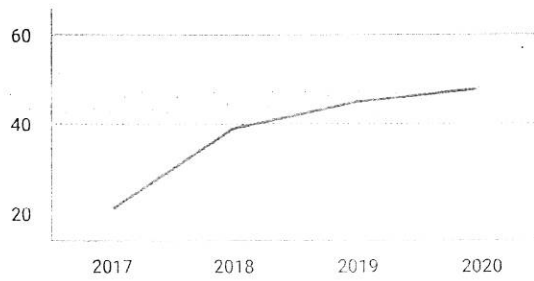
59% similarity

59% similarity

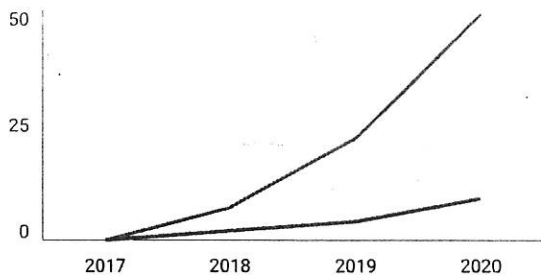
SJR



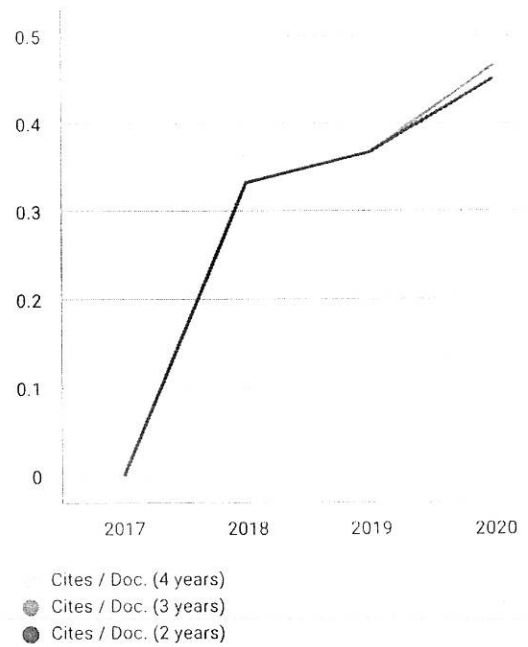
Total Documents



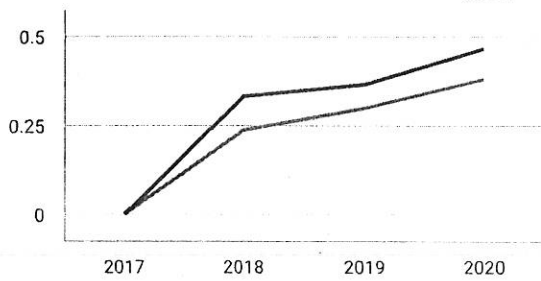
Total Cites Self-Cites



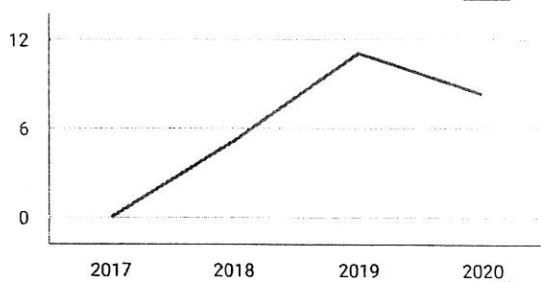
Citations per document



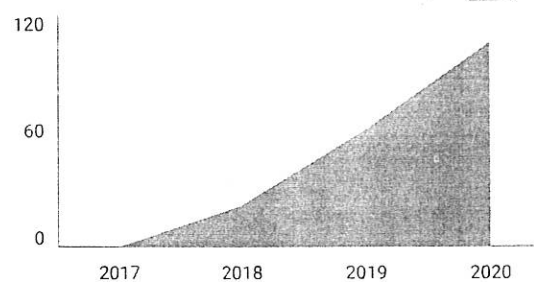
External Cites per Doc Cites per Doc



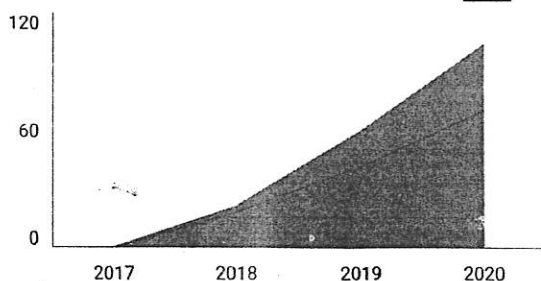
% International Collaboration



Citable documents Non-citable documents



Cited documents Uncited documents



Indonesian Biomedical Journal

Q4 Biochemistry, Genetics and Molecular Biology... best quartile

SJR 2020 0.16

powered by scimagojr.com

Show this widget in your own website

Just copy the code below and paste within your html code:

```
<a href="https://www.scima
```