

# Table of contents

Volume 456

2020

[◀ Previous issue](#)   [Next issue ▶](#)

**The 10th International Conference on Green Technology (ICGT) "Empowering the Fourth Industrial Revolution through Green Science and Technology" 2-3 October 2019, Malang, Indonesia**

Accepted papers received: 10 February 2020

Published online: 07 April 2020

[Open all abstracts](#)

---

## Preface

---

**OPEN ACCESS** 011001

Preface

[+ Open abstract](#)   [View article](#)   [PDF](#)

---

**OPEN ACCESS** 011002

The Committee

[+ Open abstract](#)   [View article](#)   [PDF](#)

---

**OPEN ACCESS** 011003

Peer review statement

[+ Open abstract](#)   [View article](#)   [PDF](#)

---

## Papers

---

**OPEN ACCESS** 012001

Identification of neuropeptides in gastropod mollusks. - Classical and brand-new approaches –

F Morishita, T Takahashi, T Watanabe, T Uto, K Ukena, M Furumitsu and T Horiguchi

[+ Open abstract](#)   [View article](#)   [PDF](#)

---

**OPEN ACCESS** 012002

Application of electron accelerator for flue gas treatment of coal power plant to support green technology

Darsono

[+ Open abstract](#)   [View article](#)   [PDF](#)

This site uses cookies. By continuing to use this site you agree to our use of cookies. To find out more, see our [Privacy and Cookies policy](#).



**OPEN ACCESS**

Synthesis of schiff base compound from vanillin and aniline volume variations of acid catalyst from Belimbing Wuluh using grindstone method

F F H Abdurrafi, A Hanapi and R Ningsih

[+](#) [Open abstract](#) [View article](#) [PDF](#)

**OPEN ACCESS**

012019

Design for temperature distribution of *continuous furnace* system for sintering application

Widyastuti, B P Anggara, F F Sulistya, W Jatimurti, A S Wismogroho and V M Pratiwi

[+](#) [Open abstract](#) [View article](#) [PDF](#)

**OPEN ACCESS**

012020

Analysis of 1,4 naphthoquinone in the Indonesian medical plant from extract *Eleutherine palmifolia* (L.) Merr by UHPLC

R Annisa, [E Hendradi](#) and M Yuwono

[+](#) [Open abstract](#) [View article](#) [PDF](#)

**OPEN ACCESS**

012021

Competence of small medium enterprise employees to Implement ISO 14001:2015 (case study: laundry machine industry SME in Bantul Yogyakarta)

I Y Budi, M Karuniasa and R Nurcahyo

[+](#) [Open abstract](#) [View article](#) [PDF](#)

**OPEN ACCESS**

012022

Digital workplace: digital transformation for environmental sustainability

N Yalina and I S Rozas

[+](#) [Open abstract](#) [View article](#) [PDF](#)

**OPEN ACCESS**

012023

Selected purple-fleshed sweet potato genotypes with high anthocyanin contents

E Ginting, R Yulifianti and F C Indriani

[+](#) [Open abstract](#) [View article](#) [PDF](#)

**OPEN ACCESS**

012024

Simulation of climate change impact on maize growth and yield using DSSAT modeling

B A Fanshuri

[+](#) [Open abstract](#) [View article](#) [PDF](#)

**OPEN ACCESS**

012025

Conversion of citrus farming to organic in Dau, Malang, East Java: an improvement discourse. A review

This site uses cookies. By continuing to use this site you agree to our use of cookies. To find out more, see our Privacy Policy and Cookies policy.



## Analysis of 1,4 naphthoquinone in the Indonesian medical plant from extract *Eleutherine palmifolia* (L.) Merr by UHPLC

R Annisa<sup>1</sup>, E Hendradi<sup>2</sup> and M Yuwono<sup>2,\*</sup>

<sup>1</sup> Department of Pharmacy, Faculty of Medical and Health Science, State Islamic University of Maulana Malik Ibrahim, Malang, East Java, Indonesian 65144

<sup>2</sup> Faculty of Pharmacy, Airlangga University, Surabaya, East Java, Indonesian 60115

\*E-mail: mochamad-y@ff.unair

**Abstract.** Medicinal plants are widely used for the preparation of various pharmaceutical forms. *Eleutherine palmifolia* is a typical plant in Central Borneo in Indonesian. 1,4 naphthoquinone is a bioactive compound from *E. palmifolia* which has potential as a medicinal ingredient, one of which is anticancer. This study aimed to determine the levels of 1,4 naphthoquinone as a marker compound for the standardization of standardized herbal medicine (OHT) formulas of *E. palmifolia* extract. The separation was carried out with Thermo Fisher Scientific UHPLC Ultimate 3000 RS coupled with a diode array detector, and the C18 column was employed. The UV detection was performed at 254 nm, and the run time of 0.8 minutes. The mobile phase consists of an isocratic method, 95% methanol (A) and 0.5% chloroform (B). The results showed that 1,4 naphthoquinone was eluted at 3.260 min. The response of the standard 1,4 naphthoquinone linear in the concentration range of 3.0-21.0 µg/mL with  $r^2 = 0.9951$ . The accuracy of this method, which was 99.95% with RSD value  $\leq 2\%$ . UHPLC method was developed, which has been validated and shown applies to the determination and quantification of 1,4 naphthoquinone in *E. palmifolia*. Analysis of 1,4 naphthoquinone levels contained in *E. palmifolia* 12 µg/mL was 7.79 µg/mL  $\pm 0.01$ .

### 1. Introduction

*Eleutherine palmifolia* (L.) Merr is a typical plant of Kalimantan in Indonesian. The people of known as a Dayak Onion [1]. The plant is belonging to the *Iridaceae* family [2]. According to the literatures, this plants contains many chemicals that can be used as traditional medicine. The presence of the content which needs to be further studied in *E. palmifolia* is naphthoquinone. Naphthoquinone derivatives have significant pharmacological properties. It has cytotoxic, antibacterial, antifungal, antiviral, insectidal, anti-inflammatory, and antipyretic properties [3]. 1,4 naphthoquinone or para-naphthoquinone is an organic compound derived from naphthalene. It forms volatile yellow triclinic crystals and has a sharp odour similar to benzoquinone. Naphthoquinone is a lipophilic compound with a log P value of 3.933 [4].

Several studies have shown that naphthoquinone compounds and their derivatives have potential activities as anticancer drugs [5-9]. Naphthoquinone is able to inhibit cell proliferation and induce apoptosis of melanoma cells. Cancer therapy approach through apoptotic induction mechanism has been known to be able to prevent the promotion, progression and re-emergence of cancer [9].



Various methods for quantification of naphthoquinone have been described, but quantitative analysis of naphthoquinone in *E. palmifolia* has not been reported. Studies have since revealed that this species has medicinal properties [10]. Lack of more comprehensive, systematic data on the phytochemical composition of the plant prompted the authors to undertake such studies. Results from preliminary UHPLC evaluation of the 1,4 naphthoquinone occurring in the tuber of *E. palmifolia* are presented in the paper.

## 2. Experimental

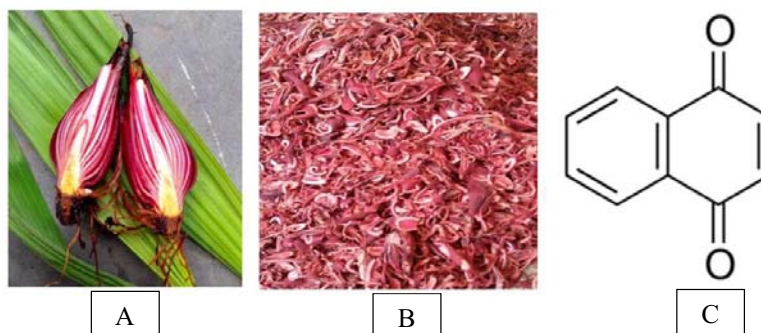
### 2.1. Sample Preparation

*E. palmifolia* was extracted three times with 500 mL of ethanol by sonication (10 min each, at ambient temperature). The sample of 25 grams was dissolved in ethanol 96% 500 mL (ratio 1:20). The collected filtrate is then separated by its solvent using a rotary evaporator.

### 2.2. Standard and Materials

2.2.1. *Standards.* The marker is 1,4 naphthoquinone compound used in the study purchased from Sigma Aldrich (Darmstadt, Germany).

2.2.2. *Herbal material.* The samples of *E. palmifolia* were purchased from vendors in Central Borneo, Indonesia. The samples were identified at the Materia Medica in Batu, East Java, Indonesia, with the accession number 074/342A/102.7/2018. The specimens are stored in the pharmacognosy Laboratory of the Pharmacy Department, Maulana Malik Ibrahim, State Islamic University of Malang. At Figure 1 was shown the image of *Eleutherine palmifolia* (A), Simplicia of *Eleutherine palmifolia* (B) and 1,4 naphthoquinone structure (C).



**Figure 1.** The image of (A) *Eleutherine palmifolia* (B) Simplicia of *Eleutherine palmifolia* (C) 1,4 naphthoquinone

### 2.3. Ultra-High Performance Liquid Chromatography (UHPLC)

2.3.1. *Chromatographic conditions.* The 1,4 naphthoquinone standard and *E. palmifolia* extract were analyzed by UHPLC. In the development of the UHPLC method, the selection of an appropriate mobile phase is a matter that needs attention. The compounds in *E. palmifolia* extract tend to be polar, so with the use of gradient elution at the beginning of elution time, there will be separation with polar compounds. The separation of the species was carried out with Thermo Fisher Scientific UHPLC Ultimate 3000 RS (Thermo Fisher Scientific, USA) coupled with a diode array detector (DAD), C18 column (5  $\mu$ m, 4.6 mm  $\times$  250 mm) as employed. The UV detection was performed at 254 nm, and the run time of 0.8 minutes. The mobile phase consists of the isocratic method, 95% methanol (pump A) and 0.5% chloroform (pump B). The flow rate was 1.0 mL min<sup>-1</sup>, and the injection volume was 10  $\mu$ L. The temperature of the column was set at 25  $^{\circ}$ C.

2.3.2. *Analytical validation.* We evaluated parameters in the validation of the analytical methods such as selectivity, accuracy, precision, linearity.

*a. Selectivity*

Method selectivity was determined by comparing retention time ( $t_R$ ) of *E. palmifolia* extract added with 1,4 naphthoquinone with  $t_R$  of 1,4 naphthoquinone.

*b. Accuracy*

Accuracy was evaluated by addition (spiking method) of the standard solution 1,4 naphthoquinone with concentrations 12  $\mu\text{g/mL}$ . The analysis was performed in triplicate. The precision of the method is determined by the method of adding and expressed as a percent of inventiveness behind. Rally behind several standards that can be obtained after added to the sample. Determining the accuracy of 1,4 naphthoquinone in extracts made by adding a standard solution of 3.0  $\mu\text{g/mL}$  as much as 2 mL into the extract *E.palmifolia*. Content standards are measured in a sample using a method of adding raw can be calculated by the formula (1) [11]:

$$C = S \left( \frac{R_1}{R_2 - R_1} \right) \quad (1)$$

Description:

C = concentration standards are measured in samples

S = concentration standards were added to the sample

$R_1$  = responses were given samples

$R_2$  = responses were given a mixture of the sample with an additional standard

*c. Precision*

The repeatability of the analytical method was evaluated by injecting six independent preparations of an *E. palmifolia* solution, on the same day by the same analyst. Obtaining the results, we calculated the mean and standard deviation (SD) with the formula (2) [12,13]:

$$SD = \sqrt{\frac{\sum_{i=1}^n (x_i - \bar{x})^2}{n-1}} \quad (2)$$

Description :

$x_i$  = the acquisition back in replay to-*i*

$\bar{x}$  = average gain back

n = number of repetitions

*d. Linearity*

A calibration curve was prepared with volumetric flasks of 10 mL calibrated at the concentrations ( $\mu\text{g/mL}$ ): 3.0; 6.0; 9.0; 15.0; 18.0; and 21.0 from standard stock solutions with a concentration of 100  $\mu\text{g/mL}$  of 1,4 naphthoquinone in water ultrapure. The linearity of the method is determined by way of making the curve relationship between the concentration of the standard on the axis x and area on the axis y. The relation between 1,4 naphthoquinone concentration and mean response is implemented in a linear regression equation ( $y = a+bx$ ) and the correlation coefficient ( $r$ ). The average is implemented in a linear regression equation ( $y = a+bx$ ) and the correlation coefficient ( $r$ ) [12,13].

2.3.3. *Quantification of 1,4 Naphthoquinone in E.palmifolia.* About 12  $\mu\text{g/mL}$  of *E.palmifolia* was used to quantify the 1,4 naphthoquinone content. Filtered to vial using a syringe and a 0.45  $\mu\text{m}$  filter. The calculation of the 1,4 naphthoquinone content in the solution *E.palmifolia* was made in validation Chromeleon software version 7.2 three vials from each sample was prepared and injected in triplicate.

### 3. Results and discussion

Research on traditional medicine, especially those in the form of medicinal plants, continues to increase even the number increases lately. Even so until now, not much results of research into medicinal plants which is used as medicine in-service health. Drugs that can be used at the community must meet the safety requirements, useful and standardized. *E.palmifolia* is often used in the community as an anti-tumour in the digestive organs including in oral cavity, but there is no scientific research, and active ingredients have no role yet Based on the approach ethnopharmacology *E.palmifolia* is proven to be anti-cancer. Ethnopharmacology is a theoretical approach with utilizing empirical indications of the use of ingredients plants as medicine.

#### 3.1. Analytical validation

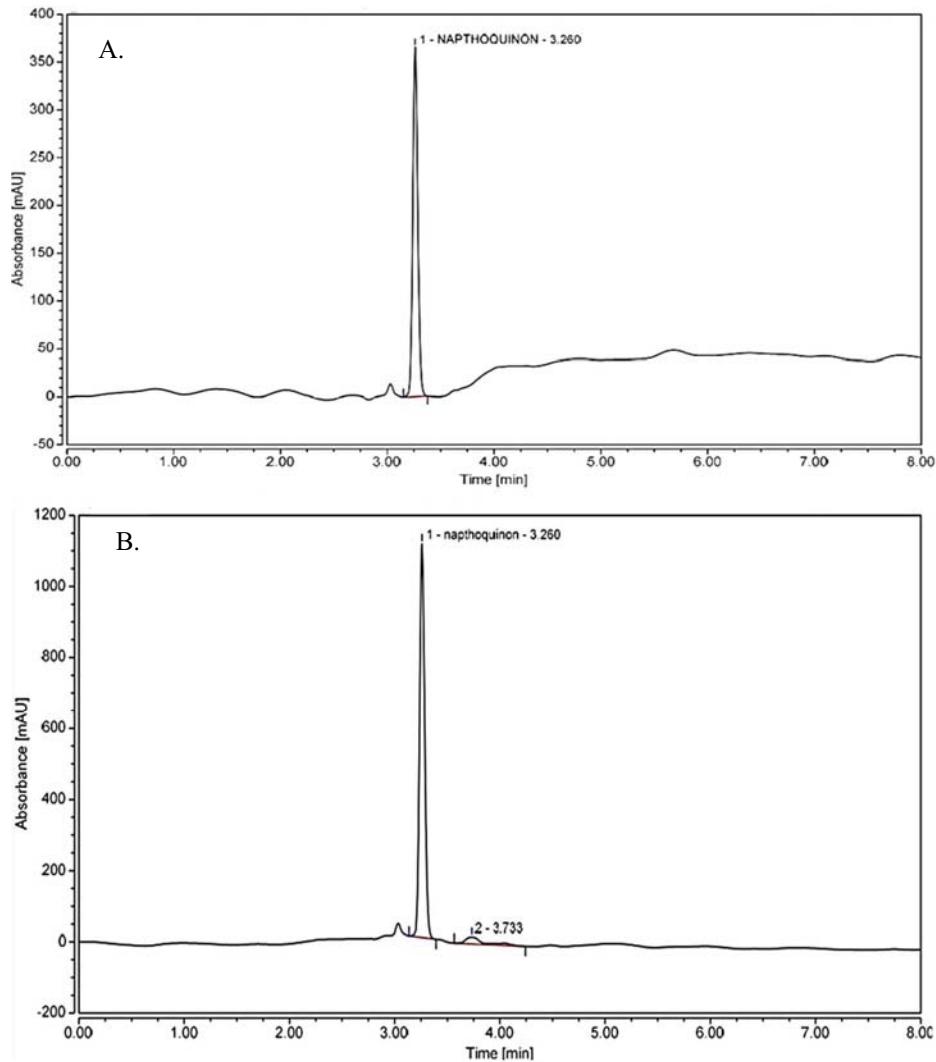
Validation is carried out to guarantee that the results obtained can be justified to calculate 1,4 naphthoquinone levels in *E.palmifolia* extract. The concentration of 1,4 naphthoquinone in *E.palmifolia* was evaluated through an analytical method which is presented in this work. Some analytical validation parameters were assessed.

The selectivity is the ability of a process to quantify the analyte accurately in the presence of interferences existing in the sample, such as impurities, degradation products, and excipients. Concerning a herbal, selectivity is an essential parameter because it can show that the marker or markers can be detected unequivocally. As those herbals are complex matrices, and cannot compare with placebo, this parameter is indispensable. Figure 2 shows the chromatograms of standard and extract *E.palmifolia* to the selectivity evaluation. The solvent chromatogram did not show the appearance of a peak. In this study, the analytical method developed for the quantification of 1,4 naphthoquinone, was selective because no peak appears in the default retention time, taking into account the race time of the mobile phase, the standard and the extract *E.palmifolia*. Several analytical methods have been proposed for the determination and quantification of 1,4 naphthoquinone from different sources. Analytical method where the separation was done in the isocratic mode, using methanol: chloroform (95:0,5 v/v) at a flow rate of 1 ml min<sup>-1</sup>.

The developed method has been validated and showed excellent accuracy, precision, and linearity. The first parameter of the validation method is accuracy. Accuracy is a measure that shows the degree of closeness of the analysis results with the actual level of the analyte. Accuracy is stated as a percentage of recovery of added analytes. Accuracy can be determined in two ways, namely, spiked-placebo recovery and standard addition methods [11]. In this study, using the addition method, where the sample is analyzed, then concentration variations in the regression equation are added to the sample, mixed and analyzed again. The difference between the two results is compared with the actual level. Based on the calculation of the accuracy parameter to analyze 1.4 naphthoquinone, it shows the value of percentage recovery of 99.95% with the addition of the standard 2.0 µg/mL. A reasonable percentage recovery requirement is 98-102% [11].

Precision is a measure of the closeness of the results of the analysis obtained from a series of repeat measurements of the same size. The precision value is represented by the standard deviation value and % relative standard deviation (% RSD) of the repeatability of each 1,4 naphthoquinone standard series measured at a concentration. Precision criteria are given if the method gives a value of % RSD ≤ 2%. This criterion is very flexible, depending on the concentration of the analyte analyzed, the number of samples and laboratory conditions [6]. RSD of variation increase with decreasing levels of analyte analyzed [11].

The 1,4 naphthoquinone precision test results in *E.palmifolia* extract at an analyte concentration of 0.3-21.0 µg/mL (table 1) showed that the RSD value met the precision requirements, so that in this study the more significant the concentration of the analytes added, the better precision would be. This shows that the 1,4 naphthoquinone analysis method in *E.palmifolia* extract will give precise results if the analytes added are getting bigger.



**Figure 2.** Chromatograms obtained in the selectivity parameter of the analytical method. (A) Chromatogram of 1,4 naphthoquinone in 3.260 min (B) 1,4 naphthoquinone in *E.palmifolia* in 3.260 min.

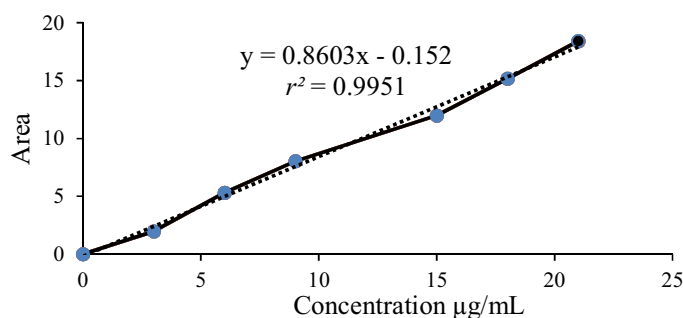
**Table 1.** Precision of 1,4 Naphthoquinone at 3.0-21.0  $\mu\text{g/mL}$ .

Concentration ( $\mu\text{g/mL}$ )	Mean concentration that is legible	SD	% RSD
3.00	1.24	0.00	0.57
6.00	5.28	0.00	0.05
9.00	7.22	0.00	0.02
15.00	12.09	0.00	0.00
18.00	17.29	0.00	0.00
21.00	18.89	0.00	0.00

Linearity test is an analytical method that illustrates the ability of a tool to obtain test results that are proportional to the levels of analytes in the extract at a certain range of levels [9]. Linearity data is obtained by making a curve of the relationship between the standard concentration of melamine on the x-axis and absorbance on the y-axis. Before obtaining linearity data, a standard standard curve of 1,4 naphthoquinone with a concentration of 3.0; 6.0; 9.0; 15.0; 18.0; and 21.0  $\mu\text{g/mL}$ .

Linearity is expressed in the correlation coefficient ( $r^2$ ). The correlation coefficient ( $r^2$ ) in this study was 0.9951. This value meets the requirements set by the AOAC guideline, which is 0.9900. High correlation coefficient values indicate a linear relationship between the measured detector signal and the amount of 1,4 naphthoquinone in *E.palmifolia* extracts (Figure 3).

The intercept value (a) indicates the influence of the matrix on the analyzed solution. Intercept values that are farther from zero are affected by the matrix in the higher solution. This can interfere with the determination of the analyte in the sample to be analyzed. The slope value (b) expresses the sensitivity of a method. A considerable slope value indicates that a small change in concentration is very influential on the detector signal produced so that a method can be said to have excellent sensitivity [9]. The result of all validation step was tabulated in Table 2.



**Figure 3.** Linearity graph analytical validation pada 254 nm.

**Table 2.** Validation Parameters of 1,4 Naphthoquinone in *E.palmifolia*.

Validation Parameters	Result
Selectivity (Retention time $t_R$ )	3.260
Accuracy %	99.95
Precision (%RSD, n=6)	$\leq 2$
Linearity (correlation coefficient)	0.9951

### 3.2. Quantification of 1,4 Naphthoquinone in *E.palmifolia* by UHPLC

High-performance liquid chromatography is a chromatographic technique based on the difference in the distribution of component molecules between two phases (stationary phase and stationary phase) which have different polarity. The HPLC technique is a liquid chromatography technique that can be used both for separation, identification, HPLC or high-performance liquid chromatography is one of the chromatographic techniques based on the difference in the distribution of component molecules between two phases (mobile and stationary phases) different polarity. The HPLC technique is a liquid chromatography technique that can be used both for the need for separation and identification.

The working principle of the HPLC tool is that when a sample to be tested is injected into a column, and the sample will then be decomposed and separated into chemical compounds according to differences in affinity. The results of the separation will then be detected by a detector (UV spectrophotometer) at a specific wavelength. The results that emerge from the detector are then recorded by a recorder which can usually be displayed using an integrator or using a personal computer (PC) connected online with the HPLC device. The calculation of the 1,4 Naphthoquinone content in the solution *E.palmifolia* was made in validation Chromeleon software version 7.2. The sample was



prepared and injected in triplicate. The research can be seen that the content of 1,4 naphthoquinone in *E.palmifolia* extracts. Data shows that *E.palmifolia* extracts contains a high amount of 1,4 naphthoquinone. Concerning the quantification of 1,4 naphthoquinone in *E.palmifolia*, it has been shown that the concentration of 12 µg/mL was  $7.79 \mu\text{g/ mL} \pm 0.01$ , which was calculated against the 1,4 naphthoquinone standard.

#### 4. Conclusion

UHPLC method was developed, which has been validated and shown apply to the determination and quantification of 1,4 naphthoquinone in *E.palmifolia*. The process was approved according to standards showing selectivity, accuracy, precision, and linearity. Analysis of 1,4 naphthoquinone levels contained in *E. palmifolia* 12 µg/mL was  $7.79 \mu\text{g/mL} \pm 0.01$

#### References

- [1] Galingging Y R 2007 *Jurnal Pengkajian dan Pengembangan Teknologi Pertanian* **10** 76-83
- [2] Galingging Y R 2010 *Jurnal Penelitian dan Pengembangan Teknologi Pertanian* **10** 56-66
- [3] Fitri, Y, Rosidah and Suwarso E, 2014. *International Journal of PharmTech Research*, **6** 1392-96
- [4] Han A R, Min H, Nam J W and Lee N Y 2008 *Chemistry Pharmaceutical Bulletin*, **56** 1314–16
- [5] Kongkathip N, Luangkamin S, Kongkathip B, Sangma C, Grigg R, Kongsaree P, Prabpai S, Pradidphol N, Piyaviriyagul S and Siripong P 2004 *Journal of Medicine Chemistry* **47** 4427-38
- [6] Rastogi R P, Richa and Sinha R P 2009 *Excli. Journal* **8** 55–81
- [7] Riyanto 2014 *Validasi & Verifikasi Metode Uji: Sesuai dengan ISO/IEC 17025 Laboratorium Pengujian dan Kalibrasi* (Yogyakarta: Deepublish)
- [8] Shabir G A 2004 *Journal of Validation Technology* **10** 210-218
- [9] Sharma R. A, Euden S A, Platton S L, Cooke D N, Shafayat A, Hewitt H R, Marczylo T H, Morgan B, Hemingway D, Plummer S M, Pirmohamed M, Gescher A J and Steward W P 2004 *Clin. Cancer Res.* **10** 6847–54
- [10] Dewoto H R 2007 *Majalah Kedokteran Indonesia* **57** 205-11
- [11] Harmita 2004 *Majalah Ilmu Kefarmasian* **1** 117-35
- [12] [AOAC] Association of Analytical Communities 2002 *Guidelines for Single Laboratory Validation of Chemical Methods for Dietary Supplements and Botanicals* available at: <http://www.aoac.org>
- [13] [ICH] International Conference on Harmonisation 2005 *Validation of analytical procedures: text and methodology Q2(R1)* available at: <http://www.ich.org>

## The Committee

### Steering Committee

1. Dr. Sri Harini - Dean of Faculty of Science and Technology, UIN Maulana Malik Ibrahim
2. Dr. Anton Prasetyo - Vice Dean I, Faculty of Science and Technology, UIN Maulana Malik Ibrahim
3. Dr. Dwi Suheriyanto - Vice Dean II, Faculty of Science and Technology, UIN Maulana Malik Ibrahim
4. Dr. Imam Tazi - Vice Dean III, Faculty of Science and Technology, UIN Maulana Malik Ibrahim
5. Elok Kamilah Hayati, M.Si - Head of Chemistry Department, Faculty of Science and Technology, UIN Maulana Malik Ibrahim

### Proceeding Chair

1. Febi Yusniyanti, M.Sc (Department of Chemistry, Faculty of Science and Technology, UIN Maulana Malik Ibrahim)
2. Nurvita Maharani, M.Sc (Department of Chemistry, Faculty of Science and Technology, UIN Maulana Malik Ibrahim)
3. Utiya Hikmah, M.Si (Department of Physics, Faculty of Science and Technology, UIN Maulana Malik Ibrahim)
4. Didik Wahyudi, M.Si (Department of Biology, Faculty of Science and Technology, UIN Maulana Malik Ibrahim)
5. Armeida D R Madjid M.Si (Department of Chemistry, Faculty of Science and Technology, UIN Maulana Malik Ibrahim)
6. Ernaning Setiyowati, MT (Department of Architecture, Faculty of Science and Technology, UIN Maulana Malik Ibrahim)

### Organizing Committee

#### Chairman

Rachmawati Ningsih, M.Si

#### Secretary

Dewi Yuliani, M.Si

#### Treasurer

Ninik Chamidah, S.Kom (Coord.)

Tuti Indayani, S.E

#### Secretariat and Event Divison

Lulu'atul Hamidatu Ulya, M.Sc (Coord.)

Romaidi, D.Sc

A. Ghanaim Fasya, M.Si

Utiya Hikmah, M.Si

Mujahidin Ahmad, M.Sc

M. Taufiq, M.Si

Andy Irawan, S.Si



**Scientific Division**

Armeida Dwi Ridhowati Madjid, M.Si(Coord.)

Ernaning Setiyowati, M.T

Juhari, M.Si

Muthmainnah, M.Si

Didik Wahyudi, M.Si

Mufid, M. Hum

**Website and Publication Division**

Johan Ericka Wahyu Prakasa, M.Kom (Coord.)

Fajar Rohman Hariri, M.Kom

Prima Kurniawaty, M.Sc

**Logistics Division**

Faridah Abubakar M., S.Ag(Coord.)

Fitri Amalia Dewi, S.Pd

Weni Susilowati, S. AB

Isnaeni Hartiningsih, S.Si

Irjatul Wardah, S.Kom

**Transportation and Documentation Division**

Aribowo Utomo, S.E (Coord.)

M. Chalid Al Ayubi, S.Si

Moch. Royanudin, S.Si

Sabar, S.S

**Editorial Board Members**

1. Prof. Toshifumi Sakaguchi (Pefectural University of Hiroshima, Japan)
2. Prof. Fumihiro Morishita (Hiroshima University, Japan)
3. Prof. Sutiman B. Sumitro (Brawijaya University, Indonesia)
4. Prof. Arnold Paebens (SES, Germany)
5. Prof. Akira Kikuchi (Brawijaya University, Indonesia)
6. Prof. Kanokwan Poomputsa (KMUTT, Thailand)
7. Prof. Drs. Darsono, M.Sc (Badan Tenaga Nuklir Nasional, Indonesia)
8. Mohamad Saufi bin Rosmi, Ph.D (Universiti Pendidikan Sultan Idris (UPSI) Malaysia)
9. Eriyanto Yusnawan, Ph.D (Balai Penelitian Tanaman Aneka Kacang dan Umbi Malang)
10. Prof. Valdir Luna da Silva (Universidade Federal de Pernambuco, Brazil)
11. Prof. Mohd Noor Bin Ahmad (Universiti Teknologi Malaysia)
12. Dr. Bambang Piluharto (Jember University, Indonesia)
13. Yuniar Ponco Prananto, Ph.D (Brawijaya University, Indonesia)
14. Zubaidah Ningsih, Ph.D (Brawijaya University, Indonesia)
15. Dr. Evika Sandi Savitri (UIN Maulana Malik Ibrahim, Indonesia)
16. Dr. Kiptiyah (UIN Maulana Malik Ibrahim, Indonesia)
17. Dr. Akyunul Jannah (UIN Maulana Malik Ibrahim, Indonesia)



## Watch Your Business Grow.

Mobiloil Credit Union offers a variety of Business Services.

Mobiloil Credit Union

OPEN

# IOP Conference Series: Earth and Environmental Science

## COUNTRY

[United Kingdom](#)



Universities and research institutions in United Kingdom

## SUBJECT AREA AND CATEGORY

[Earth and Planetary Sciences](#)  
[Earth and Planetary Sciences \(miscellaneous\)](#)

[Environmental Science](#)  
[Environmental Science \(miscellaneous\)](#)

## PUBLISHER

[IOP Publishing Ltd.](#)

## H-INDEX

18

## PUBLICATION TYPE

Conferences and Proceedings

## ISSN

17551315, 17551307

## COVERAGE

2010-2020

## INFORMATION

[Homepage](#)

[How to publish in this journal](#)

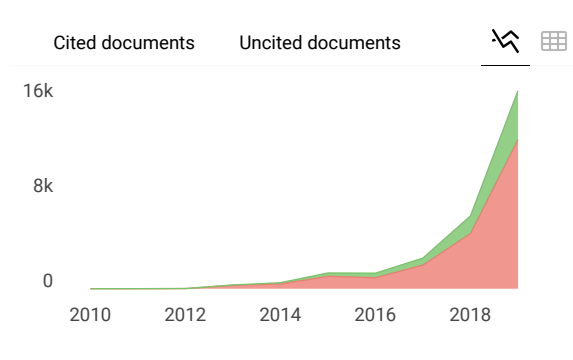
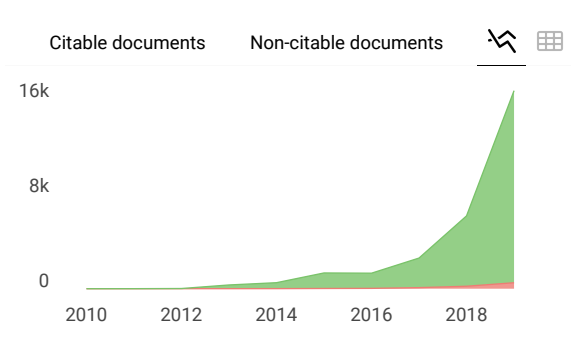
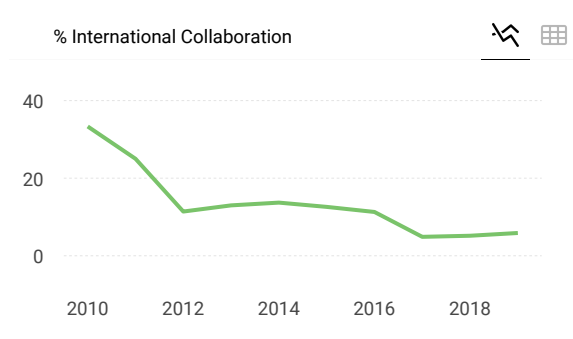
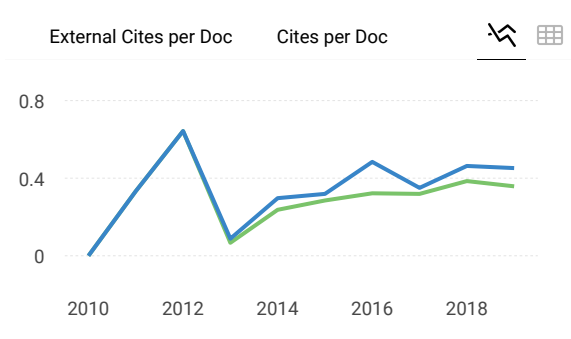
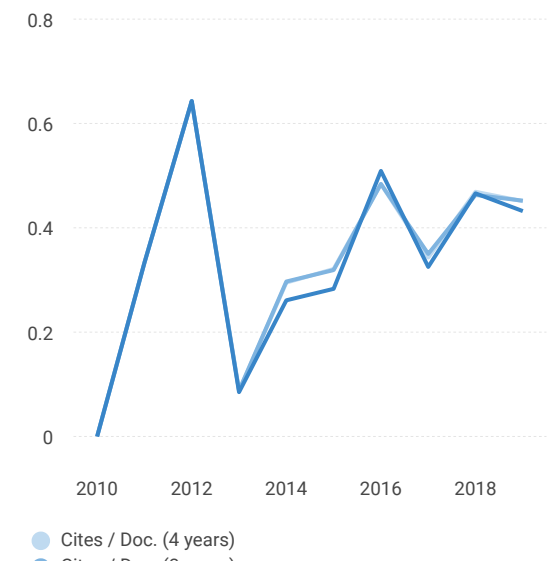
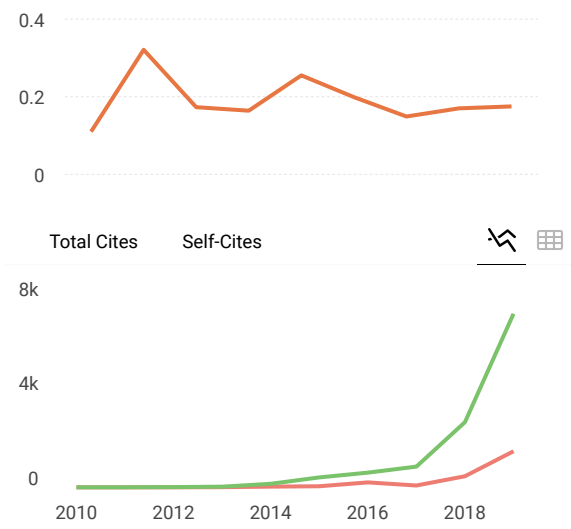
[ees@iopublishing.org](mailto:ees@iopublishing.org)

## SCOPE

The open access IOP Conference Series: Earth and Environmental Science (EES) provides a fast, versatile and cost-effective proceedings publication service.



Join the conversation about this journal



**IOP Conference Series: Earth and Environmental...**

Not yet assigned quartile

**SJR 2019**  
0.18

powered by scimagojr.com

← Show this widget in your own website

Just copy the code below and paste within your html code:

```
<a href="https://www.scimaç"
```

Metrics based on Scopus® data as of April 2020

F **FEROSKHAN M** 3 months ago

IOP Conference Series: Earth and Environmental Science - Volume 573 is not available in Scopus. But later volumes are available. May I know when will they publish in Scopus?